



CHAMBERTITE CABLE ENTRY BULKHEAD

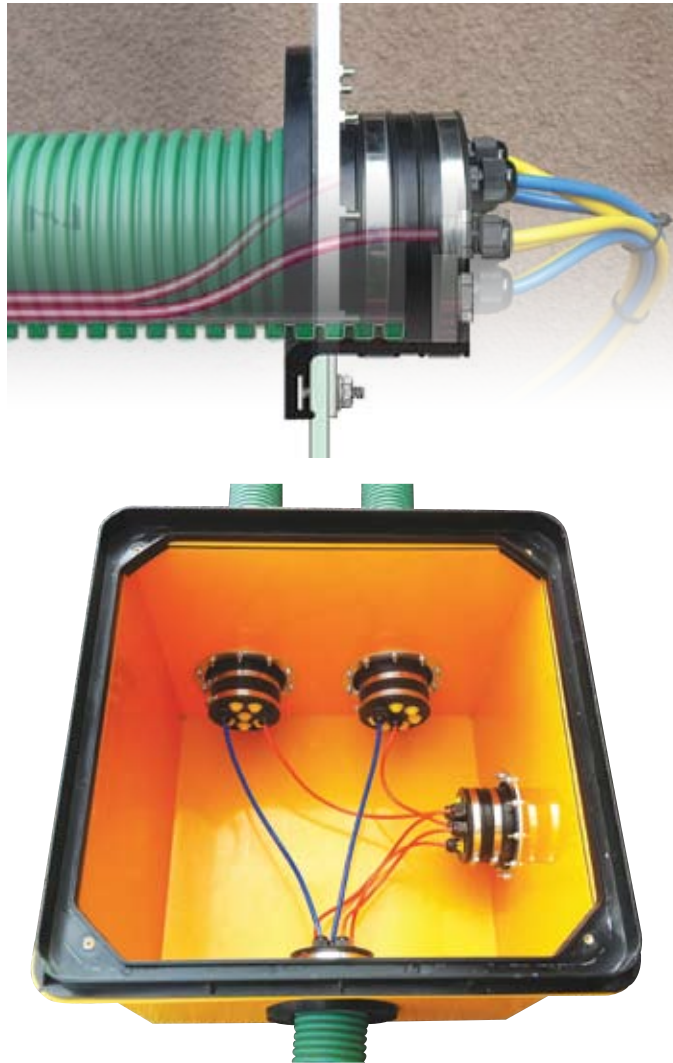
Cost Effective Construction Equipment

The **ChamberTite** cable entry bulkhead is part of the comprehensive **ChamberTite** range from **Forecourt Solutions**. The bulkhead is designed to alleviate the problem of water ingress into electrical draw pits, tank & dispenser sumps and other containment chambers that have electrical cable entries. It also prevents cross contamination between linked sumps.

The bulkhead is used in conjunction with a 4" ChamberTite entry boot (CTB-7450) to provide a seal at the end of twin wall or single wall duct within the termination boot. The bulkhead can be used either in new installations or as a retrofit upon existing installations. For installations using a 2" conduit in place of 4" duct an additional kit utilising a reducer donut to seal the 2" pipe is available under product code CEB-4520KIT.

Design Concept

The Bulkhead System is supplied with sufficient cable glands and blanking plugs to enable installation from 1 to 8 individual cables whilst maintaining full watertight integrity. Additional plates and glands can be provided to suit specific sizes and types of cables such as fibre optic or customer specific cables.



Other Products



Electrical Draw Pits



Pipe & Cable Entry Boot



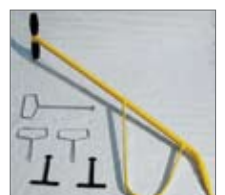
Composite Gully Grates



Tank & Dispenser Sumps



Composite Manhole Covers



Cover Lift Sticks

Typical Uses

- ➡ Electrical draw pits
- ➡ Tank sumps
- ➡ Dispenser sumps
- ➡ DCD wiring
- ➡ Electrical entries into the shop
- ➡ LPG installations

Applications

This product is equally suitable for use with:

- ➡ Fibreglass or rotationally moulded polyethylene chambers
- ➡ Steel welded containment chambers
- ➡ Concrete and brick chambers with entry plates.

Part Number Description

Cable Entry Bulkhead for 4" Duct
 Cable Entry Bulkhead for 2" conduit
 Cable Entry Bulkhead for 3" Duct"

CTB-7450B
 CEB-4520KIT
 CEB-4530KIT



Forecourt Solutions Ltd
 Unit F, Thistle Park
 Crossways Road
 Showground Business Park
 Bridgwater, Somerset
 TA6 6LS, UK

T: +44 (0) 1278 42 88 33
 F: +44 (0) 1278 45 98 08
 E: info@forecourtsolutionsltd.com
 W: www.forecourtsolutionsltd.com
 Registered in England & Wales No: 5669793
 VAT Reg No: 879 904 263

