

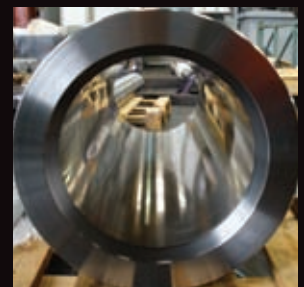


CNC Honing, Manual Honing

Honing is the last operation to take place on the internal diameters of components. It is a finishing process which allows Mollart-Cox Engineering to achieve extremely tight tolerances and very high quality surface finishes. Here at Mollart-Cox we have two of the most up to date honing machines available. One which is fully CNC operated and another which is semi-CNC. We can hone from 25mm dia bores up to 400mm dia bores by 5000mm long. The tolerances we can achieve are as low as 10 microns and with a surface finish of N2. Honing has

further added to the machining capabilities at Mollart-Cox and is the final process applied to most finished components. With our close working relationship with our supplier Mollart-Cox Products we can offer a quick turn around on standard and non standard applications.

Please contact Mollart-Cox Engineering for more details.



mollart-cox
Engineering Limited

Unit 1, Broombank Road,
Chesterfield Trading Estate, Chesterfield S41 9QJ

Tel: 01246 458090 Fax: 01246 458091

Email: info@mollartcox.co.uk

Rapid Reaction > Superior Quality