

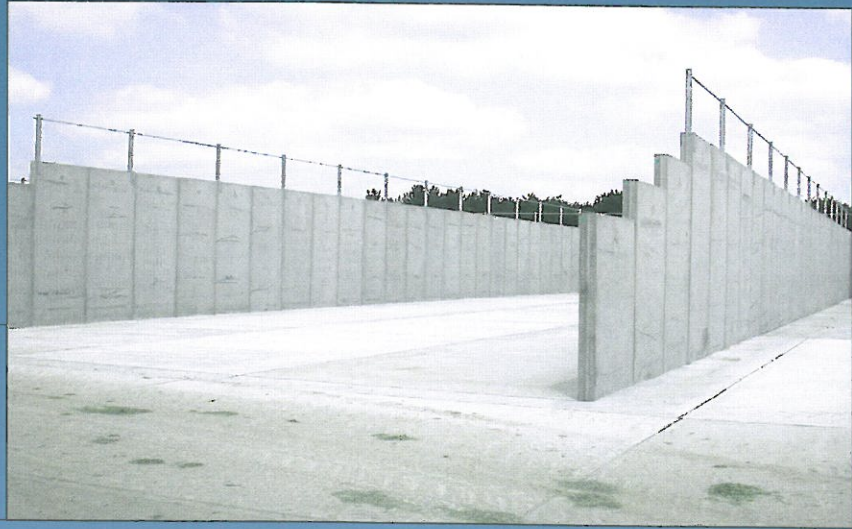


# ACP (CONCRETE) LIMITED

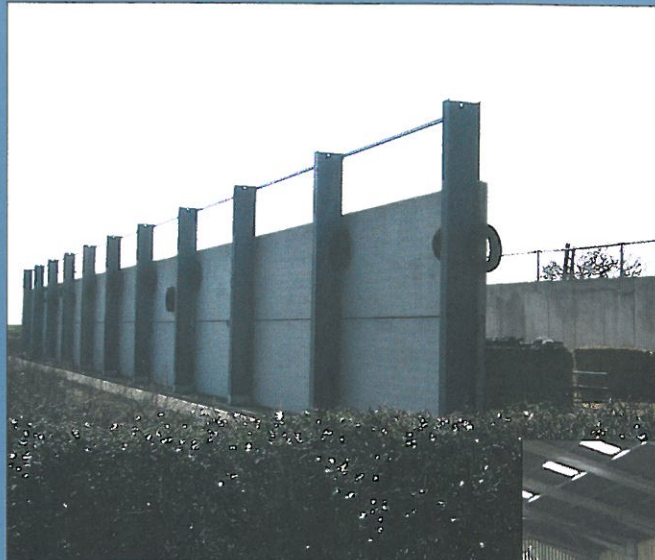
## HIGH QUALITY PRESTRESSED CONCRETE PANELS

- ◆ **Designed** to BS5502 Part 22
- ◆ **Interlocking** horizontal and vertical units
- ◆ **High strength** imparted by pre-stressing enables the units to flex under load and ride the stress of machinery impact without serious damage.
- ◆ **Quick, easy installation** results in shorter build programme and earlier floor laying date.
- ◆ **Made to measure** lengths up to 20' (6.085m)
- ◆ **Single or Double loading** to suit perimeter or division walls.
- ◆ **90° wall to floor joint** makes for easy cleaning between batches and reduces the likelihood of damage to machinery.
- ◆ **Various fixing options** allow all, part or none of the load from the stored product to be passed into the building structure.
- ◆ **Off site production** - Panels arrive on site ready to use, no curing time required.

# Silage Clamps



Vertical cantilever panels used in a multi clamp system at Leckford Estate, Hampshire



Horizontal panels are supported by steel columns or a building structure



Freestanding division walls with easy clean floor to wall joint



## A QUALITY PRODUCT

ACP prestressed concrete panels are manufactured to the highest quality standards in factory controlled conditions.

Quality precast concrete products demand high quality raw materials. Our concrete is mixed on site in a 'state of the art' 80m<sup>3</sup>/hour batching plant. Quality control runs right back to the quarry with our parent company, the Thomas Armstrong Group, supplying all the bulk components of the mix.

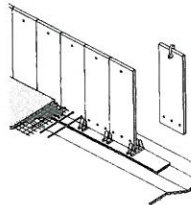
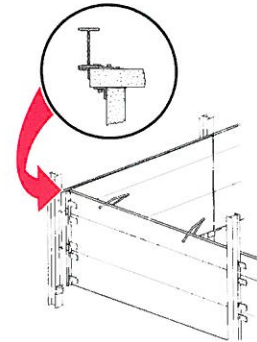


## INSTALLATION & TECHNICAL SPECIFICATION

### HORIZONTAL PANELS

#### Load passed to the building structure

ACP horizontal panels are quick and easy to install. The panels are fixed to steel columns using bolts and cleats supplied (see diagram). The simple installation means panels can be quickly dismantled for use on another location or refigured to meet changing circumstances. Polyurethane joint sealant is applied to give a water tight seal. Used as a dividing wall, double loading panels can be fitted between the column webs.



### VERTICAL PANELS

#### Freestanding, full load passes to the foundation

The panels are installed in a simple concrete trench foundation using cradles and reinforcing bars supplied. This system provides a smooth freestanding single or double loading wall with a perfect 90° wall / floor joint. These panels can be designed and manufactured to provide freestanding walls up to 5m high.

## DIMENSIONS

Thickness	145mm	180mm	280mm
Width (Half)	500mm, 600mm	On Request	On Request
(Full)	1000mm, 1100mm 1200mm, 1500mm	1000mm, 1100mm 1200mm, 1500mm	1200mm
Length	Any length up to approx. 7m. Stock lengths to suit bay sizes of 4.572m (15') and 6.096m (20')		

## LOAD/SPAN TABLE (Maximum Storage Heights)

Bay Width	Standard Single Side Loading Units (BS5502 Class 2)						Vertical Double Loading Units		
	145mm		180mm		280mm		Panel Type	8t Tractor	10t Tractor
4.500m	5.0m	5.0m	5.0m	5.0m	6.0m	6.0m	145mm	3.0m	2.8m
5.500m	4.4m	3.4m	5.0m	5.0m	6.0m	6.0m	180mm	4.0m	3.7m
6.000m	3.2m	2.4m	5.0m	4.4m	6.0m	6.0m	280mm	5.0m	5.0m

For more information please visit our website



## ACP (CONCRETE) LIMITED

Prestressed Concrete Panel Division  
Wood Lane Business Centre, Wood Lane, Uttoxeter,  
Staffs ST14 8JR

Tel: 01889 598660

Fax 01889 568160

[www.acp-concrete.co.uk](http://www.acp-concrete.co.uk)