

Product Information

3/2-way direct acting solenoid valve



A. u. K. Müller

Solenoid valves
Control valves
Special valves and systems

A.u.K. Müller GmbH & Co. KG
Dresdener Str. 162
D-40595 Düsseldorf/Germany

Tel.: +49(0)211-7391-0
Fax: +49(0)211-7391-281

e-mail: info@akmueller.de
Internet: www.akmueller.de

Series 18.00x.032



Characteristics

- Direct acting
- Compact design
- Long term performance capability
- Suitable for food and hot water appliances
- Works from zero pressure
- Easy to assemble and service
- Coil change without opening of medium circuit, coil can be mounted 4 x 90°
- High operating safety through the use of high quality and 100% final testing of the products

Applications

- Steam cleaners and ironing machines
- Hot / cold drink dispensers (espresso makers)
- Medical equipment
- Industrial applications

Description

3/2-way solenoid valve of several nominal diameters for use with neutral gases and liquids.

Valves of this design are single chamber straight through valves, with threaded tube clamp or push-fit connections at outlet and inlet.

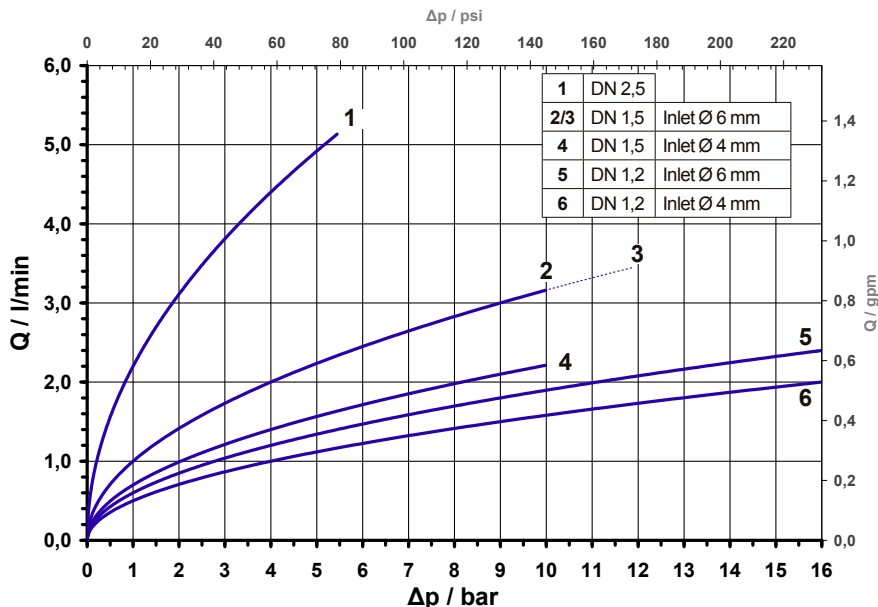
The valve body is made of PPSU, which is suitable for hot water applications.

This valve is designed for continuous operation (duty cycle 100%).

Electrical operating safety is achieved by using high quality materials of insulation class F.

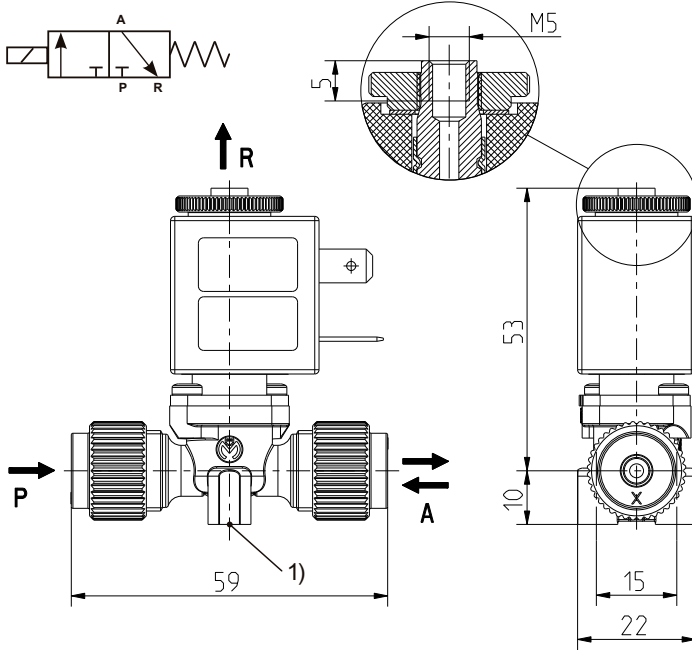
Typ	DN
18.002	1,2
18.003	1,5
18.005	2,5

typical performance curve





Series I8.00x.032



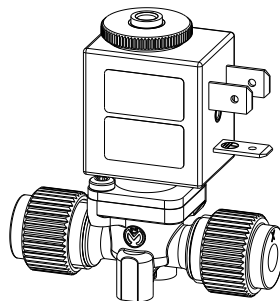
1) Fixing possibility for self tapping screw $\varnothing 3,8 \times 9$

Technical Data

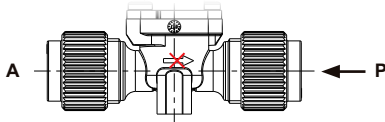
Type	Solenoid valve	
Construction	3/2-way single chamber valve, direct acting	
Function	NC (normally closed)	
Fitting position	Any	
Media	Neutral gases, cold and heated potable water and physically and chemically similar media	
T-Medium	98	°C max.
T-Ambient	60	°C max.
DN		
Cv-value	See page 3	
p-Operating		
Coil type	MS.037	
Nominal voltage	24	V DC
	Other voltages on request	
Voltage tolerance	+10% -15%	
Duty cycle	100%	
Nominal power	8,3 W	
Protection Type	IP 65	
Coil connections	P lug socket flat tap 6,3 x 0,8 mm model B-industry form	
Insulation class	F	according to EN 60730
Protection class	I	according to EN 60730 (for incorporation in class I)

Materials

Valve body	PPSU
Plunger guide	Stainless steel
Plunger	Stainless steel
Seal	EPDM FKM on request
Coil coating	PA, EP or PPS



Flow against the flow arrow on the valve body.

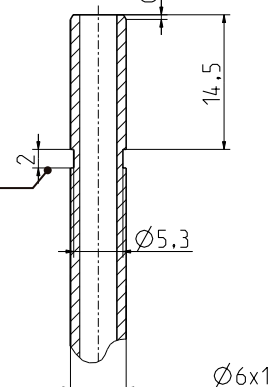
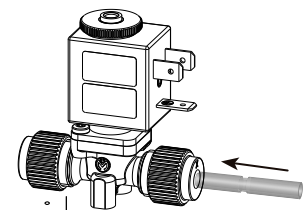


Options

Tube material	Dimension outer \varnothing x wall thickness	
Flexible plastic tubes	6 x 1	
Metal tubes	6 x 1	to be equipped with special cut-in by user

Other orifice sizes (DN) are in preparation

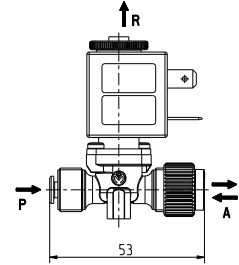
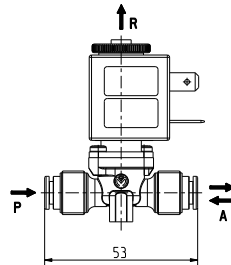
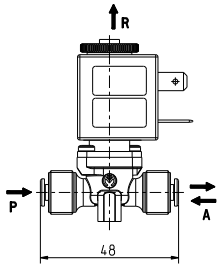
⚠ PPSU valve bodies may not come in contact with: acetone, ethers, ketones, aromatic hydrocarbons, chlorinated hydrocarbons, acids and oxidizing anaerobic adhesives.

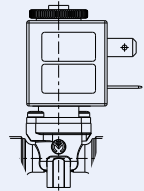
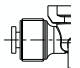
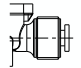
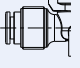
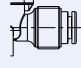
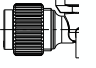
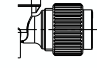




Series 18.00x.032

Alternative Connections



	Inlet		Outlet
Push-Fit connection Ø 4 mm			
Push-Fit connection Ø 6 mm			
Clamp connection Ø 6 mm			

In and outlet variants are combinable.

Each in- and outlet can be configured

ID	DN	Cv-value	Inlet	Inlet	Outlet	Outlet	p-Operating
			Clamp connection	Push-fit connection	Clamp connection	Push-fit connection	
			Ø mm	Ø mm	Ø mm	Ø mm	bar in flow direction
087711	1,2	0,5	-	4	-	4	0 - 16,0
087710		0,6	-	6	-	6	
*	1,5	0,7	-	4	6	-	0 - 10,0
087709			-	4	-	4	
*			6	-	6	-	
*		1,0	6	-	-	4	
087705			-	6	-	6	
*			-	6	-	4	
087708	2,5	2,2	-	6	-	6	0 - 12,0
*			-	6	-	4	0 - 5,5
*			-	6	-	6	
*			-	4	-	4	
*			6	-	6	-	
*			-	6	-	6	
*	-	6	-	6	-		

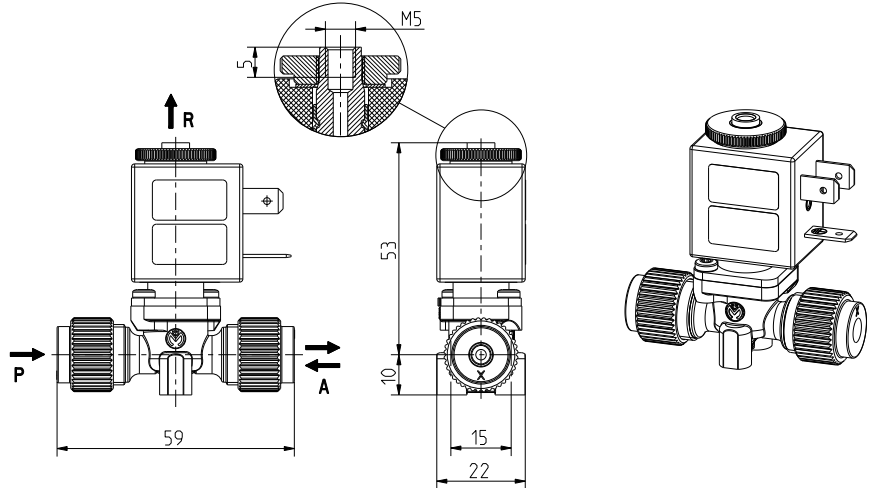
* on request



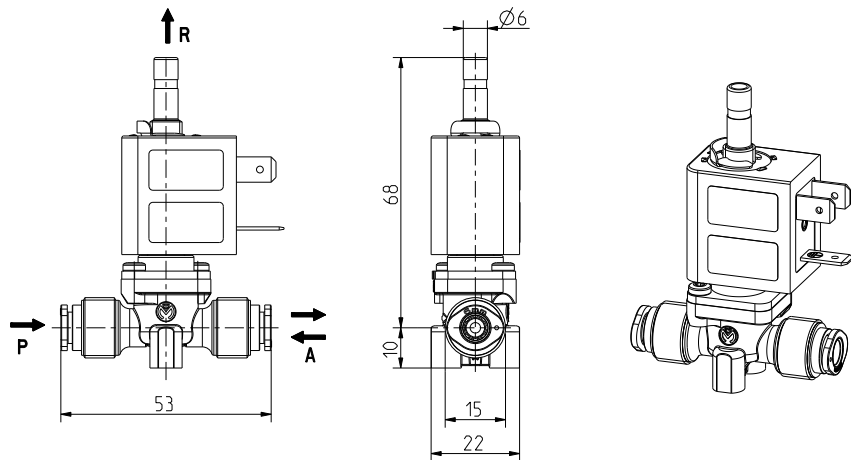
Series I8.00x.032

Beside the female thread M5 for port "R", a connection to the FitSys 18 system and for a hose nozzle are available.

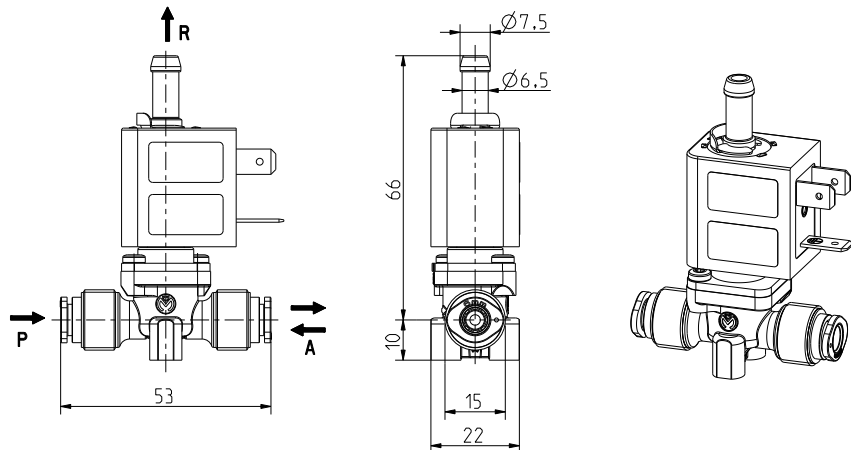
R: Female thread M5.



R: Complies with connection type C for direct connection to the plug-in cartridge type F of the FitSys 18 system.



R: Nozzle for hose connection.



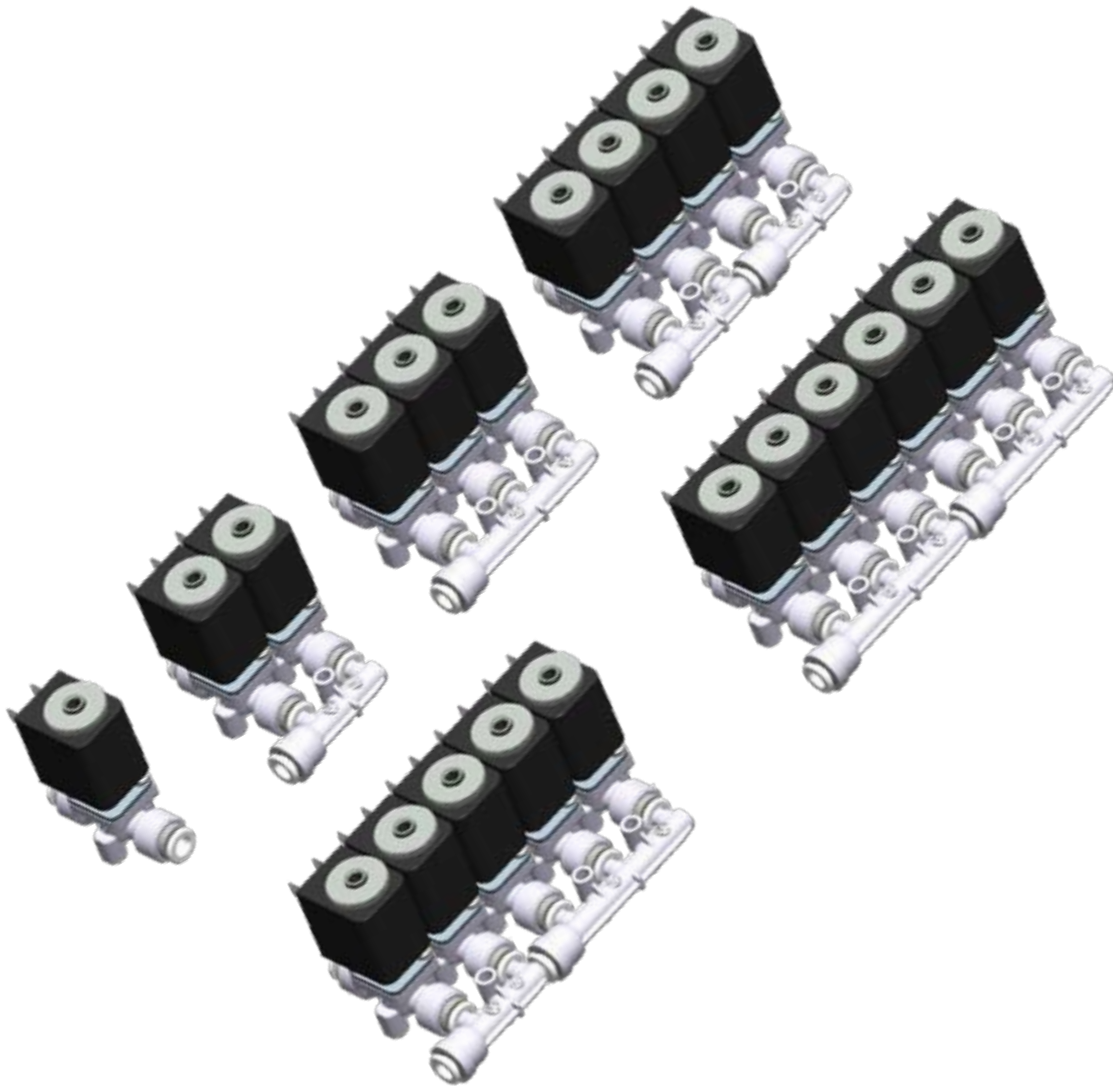


Series 18.00x.032

Only four manifold versions using push-fit connection 6 mm Ø of the valve allow to configure any combination of bank valve.
No tools are necessary.

Manifold system for Push-fit connection Ø6 mm

Configuration examples

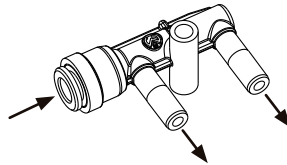
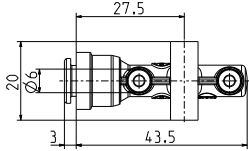




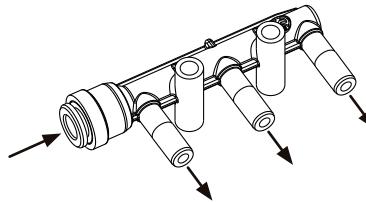
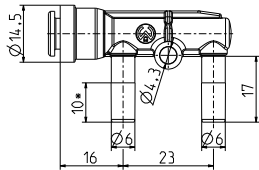
Series 18.00x.032

Manifold components for Push-fit connection 6 mm Ø

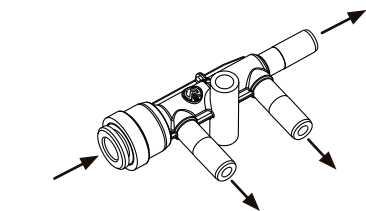
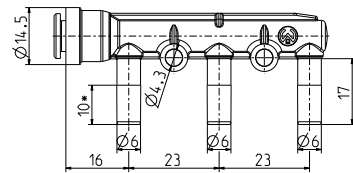
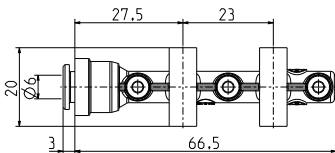
Flow direction (→) also reversed possible.



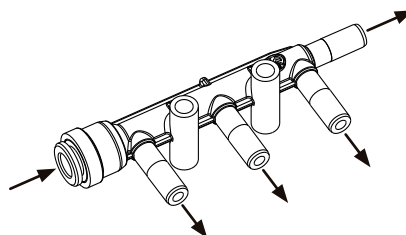
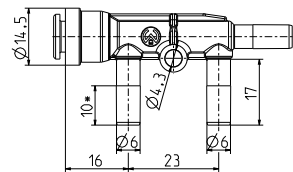
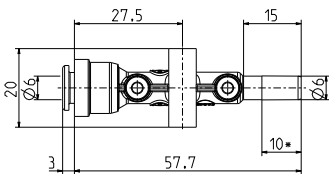
ID 008948



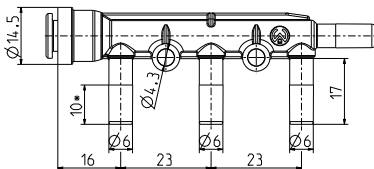
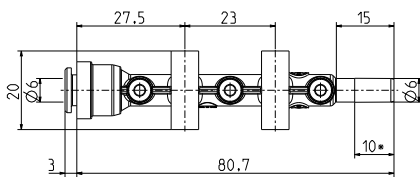
ID 008949



ID 008946



ID 008947

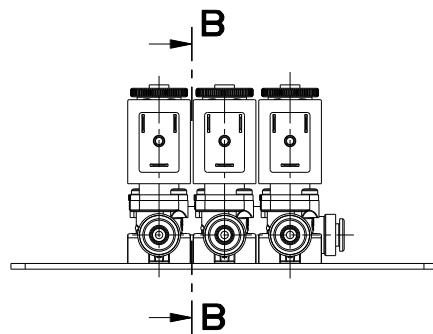
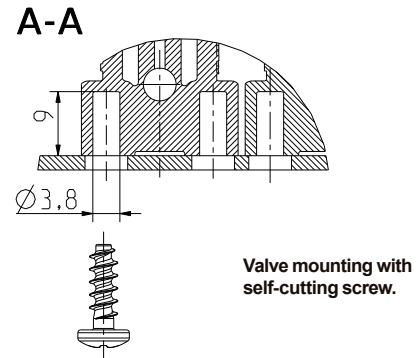
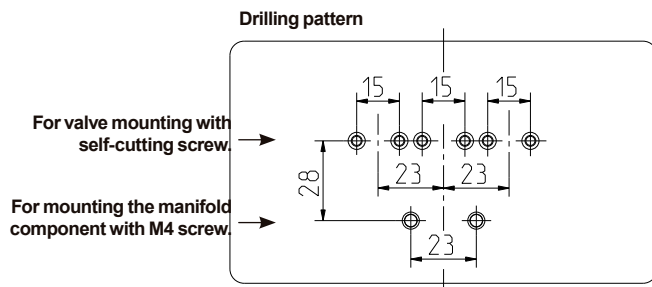
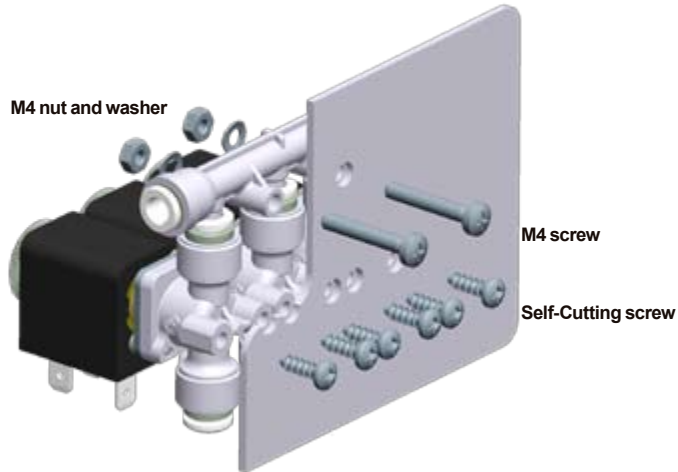


* Area of o-ring seal



Series I8.00x.032

Example of mounting for valves and manifold components on a mounting plate.



M4 nut and washer **B-B**

