



TC

FULL CONE

High Flow Rate/Metal Alloy Line

DESIGN FEATURES

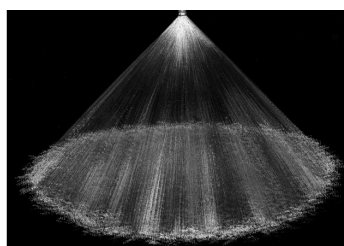
- One-piece body with integral vanes
- Male, female, and flanged connections available

SPRAY CHARACTERISTICS

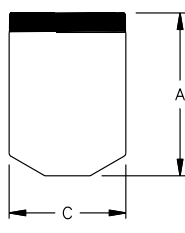
- Extremely high flow rates
- Spray pattern: Full Cone
 Spray angles: 60°, 90°, and 120°
 Flow rates: 976 to 36100 L/min
 (Special flow rates available)



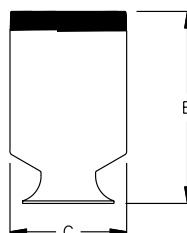
Flanged



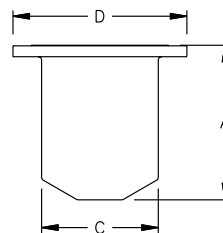
Full Cone 90° (M)



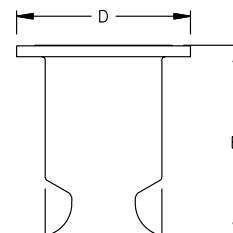
Male 60°/90°



Male 120°



60°/90° Flanged



120° Flanged

Dimensions are approximate. Check with BETE for critical dimension applications.

TC Flow Rates and Dimensions

Full Cone, Narrow 60° (N), Medium 90°(M) and Wide 120°(W) Spray Angles, 6" to 12" Pipe Sizes, BSP or NPT, 12" Flanged

Male or Female Pipe Size	Nozzle Number	Available Spray Angles	K Factor	LITERS PER MINUTE @ BAR								Approx. Free Pass. Dia. (mm)	Dimensions (mm)				Wt. (kg)
				0.1 bar	0.3 bar	0.5 bar	0.7 bar	1 bar	2 bar	3 bar	5 bar		A	B	C	D	
6	TC 532	60° 90°	2820	976	1620	2050	2390	2820	3870	4670	5900	44.5	259		168		11.3
	TC 588	90°	3110	1080	1790	2260	2640	3110	4280	5160	6520		259		168		
	TC 827	90° 120°	4380	1520	2520	3180	3710	4380	6020	7250	9180		260		313 168		
8	TC 962	60°	5090	1770	2930	3700	4320	5090	7000	8440	10700	52.3	324		219		18.1
	TC 1120	90° 120°	5930	2060	3410	4310	5030	5930	8150	9820	12400		324		389 219		
	TC 1260	90° 120°	6670	2310	3830	4850	5660	6670	9170	11100	14000		324		389 219		
	TC 1480	120°	7830	2720	4500	5690	6650	7830	10800	13000	16400		389		219		
Flanged Connection																	
6	TCFL532	60°	2820	976	1620	2050	2390	2820	3870	4670	5900	44.5	238		168 279		27.2
	TCFL588	90°	3110	1080	1790	2260	2640	3110	4280	5160	6520		238		168 279		
	TCFL827	90° 120°	4380	1520	2520	3180	3710	4380	6020	7250	9180		238 292		168 279		
8	TCFL962	60° 90°	5090	1770	2930	3700	4320	5090	7000	8440	10700	52.3	303		219 343		38.6
	TCFL1120	90° 120°	5930	2060	3410	4300	5030	5930	8150	9820	12400		303		373 219 343		
	TCFL1260	90° 120°	6670	2310	3830	4850	5660	6670	9170	11100	14000		303		373 219 343		
	TCFL1480	90° 120°	7830	2720	4500	5690	6650	7830	10800	13000	16400		303		373 219 343		
12	TCFL2070	60°	11000	3800	6300	7960	9300	11000	15100	18200	23000	57.2	432		483		72.6
	TCFL2360	90°	12400	4310	7150	9040	10600	12400	17100	20600	26100		432		483		
	TCFL2510	90° 120°	13300	4610	7630	9660	11300	13300	18300	22000	27800		432		543 323 483		
	TCFL2660	90° 120°	14100	4880	8090	10200	11900	14100	19400	23300	29500		432		543 323 483		
	TCFL2960	90° 120°	15700	5430	9000	11400	13300	15700	21500	26000	32800		432		543 323 483		
	TCFL3250	90°	17200	5960	9880	12500	14600	17200	23700	28500	36100		432		483		

$$\text{Flow Rate (l/min)} = K (\text{bar})^{0.46}$$

Standard Materials: 316 Stainless Steel.

Spray angle performance varies with pressure. Contact BETE for specific data on critical applications.

TO ORDER: specify pipe size, connection type, nozzle number, spray angle, and material.