



# WTZ

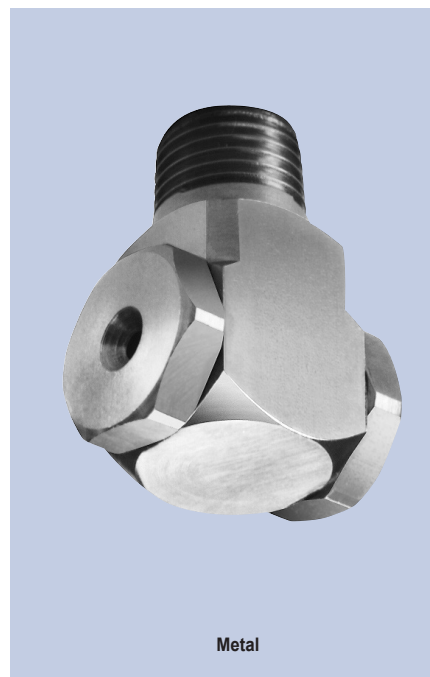
## Right Angle Full Cone

### DESIGN FEATURES

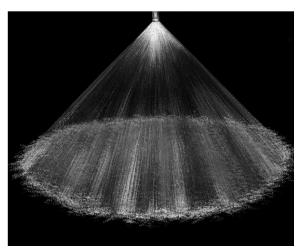
- No internal parts, clog-resistant
- Uniform distribution
- Male and female connections
- Large free passage

### SPRAY CHARACTERISTICS

- Spray pattern: Full Cone
- Spray angle: 90° and 110°
- Flow rates: 0.50 to 223 L/min



Metal

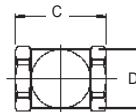
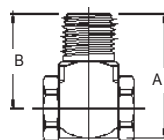


Full Cone 90°

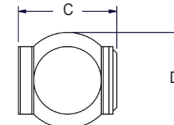
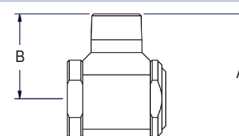


Full Cone 110°

Dimensions are approximate.  
Check with BETE for critical dimension applications.



Metal



3/4" and 1"

Spray angle performance varies with pressure.

Contact BETE for specific data on critical applications.

### WTZ Flow Rates and Dimensions

Full Cone, 90° and 110° Spray Angles, 1/4", 3/8", 1/2", 3/4", and 1" Pipe Size, BSP or NPT

Male or Female Pipe Size	Nozzle Number	K Factor	LITERS PER MINUTE @ BAR							Approx. Orifice Dia. (mm)	Dimensions (mm) Metal Only			
			0.5 bar	1 bar	2 bar	3 bar	5 bar	7 bar	10 bar		A	B	C	D
1/4"	WTZ 50	1.13	0.80	1.13	1.60	1.96	2.53	2.99	3.58	1.90	33	25	20	16
	WTZ 56	1.27	0.90	1.27	1.80	2.20	2.84	3.36	4.02	2.00				
	WTZ 62	1.41	1.00	1.41	2.00	2.45	3.16	3.74	4.47	2.10				
	WTZ 77	1.77	1.25	1.77	2.50	3.06	3.95	4.67	5.59	2.30				
3/8"	WTZ 98	2.23	1.58	2.23	3.15	3.86	4.98	5.90	7.05	2.60	38	28	30	19
	WTZ 120	2.83	2.00	2.83	4.00	4.90	6.33	7.48	8.95	3.00				
	WTZ 150	3.53	2.50	3.53	5.00	6.12	7.90	9.35	11.2	3.30				
	WTZ 170	3.96	2.80	3.96	5.60	6.86	8.86	10.5	12.5	3.50				
	WTZ 200	4.46	3.15	4.46	6.30	7.72	10.0	11.8	14.1	3.70				
	WTZ 250	5.66	4.00	5.66	8.00	9.80	12.7	15.0	17.9	4.15				
	WTZ 280	6.36	4.50	6.36	9.00	11.0	14.2	16.8	20.1	4.40				
	WTZ 310	7.07	5.00	7.07	10.0	12.3	15.8	18.7	22.4	4.65				
	WTZ 390	8.84	6.25	8.84	12.5	15.3	19.8	23.4	28.0	5.20				
WTZ 500	11.3	8.00	11.3	16.0	19.6	25.3	29.9	35.8	5.80					
1/2"	WTZ 620	14.1	10.0	14.1	20.0	24.5	31.6	37.4	44.7	7.30	47	35	38	25
	WTZ 780	17.7	12.5	17.7	25.0	30.6	39.5	46.8	55.9	8.00				
	WTZ 980	22.3	15.8	22.3	31.5	38.6	49.8	58.9	70.4	8.70				
	WTZ1120**	25.5	18.1	25.5	36.1	44.2	57.1	67.5	80.7	9.87				
	WTZ1280**	29.2	20.6	29.2	41.3	50.5	65.2	77.2	92.2	10.7				
	WTZ1440**	32.8	23.2	32.8	46.4	56.8	73.4	86.8	103.8	9.93				
3/4"	WTZ1200	27.3	19.3	27.4	38.7	47.4	61.2	72.4	86.5	8.51	76	51	51	51
	WTZ1500	34.2	24.2	34.2	48.3	59.2	76.4	90.4	108	10.5				
	WTZ1900	43.3	30.6	43.3	61.2	75.0	96.8	115	137	11.9				
1"	WTZ2200	50.1	35.5	50.1	70.9	86.8	112	133	159	12.7	81	56	65	63
	WTZ3100	70.6	50.0	70.7	99.9	122	158	187	223	13.5				

$$Flow Rate (L/min) = K\sqrt{bar}$$

Standard Materials: Brass, PVC, 303 Stainless Steel and 316 Stainless Steel.

\*Male threads ONLY. Female threads available on request. \*\*90° Spray Angle ONLY; other angles available on request.

Spray angle performance varies with pressure. Contact BETE for specific data on critical applications.