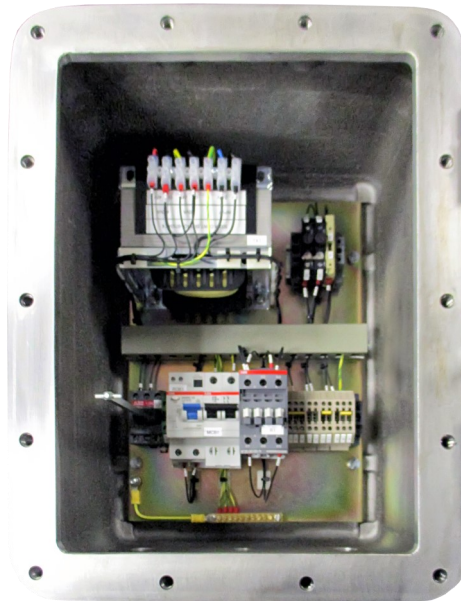




# Transformer Enclosure



The JCE range of FPT Flameproof (Ex d) Transformers are intended for use in areas made potentially hazardous by the presence of flammable liquids, gases, vapours and dusts (Zone 1, 2, 21 and Zone 22). Certified for Group IIB locations. Our standard transformer range is from 100VA up to 8000VA, all with fused primary and secondary windings.

Variations can be supplied to customer specification, please advise requirements when ordering.

All enclosures are chromate primed and polyester powder coated for increased protection against corrosion in hostile environments.

## Materials and Finish


**Body and Cover -** Aluminium alloy EN AC-42000 (LM25) to BS EN 1706:1998 with less than 0.2% copper content.

**Cover Bolts -** Stainless steel (304)

**Finish -** Polyester powder coated. Textured black as standard. Other finishes available.

**Earthing -** All enclosures are supplied with a 6mm stainless steel (304) internal and external earth stud as standard. Larger internal earths can be fitted.

## Ratings and Approvals

**Categories -**  II 2 G  
II 2 D

**Codes -** Ex d IIB+H2 T4, T5, T6 Gb  
Ex tb IIIC T85°C, T100°C, T135°C Db

**Protection Grade -** IP66

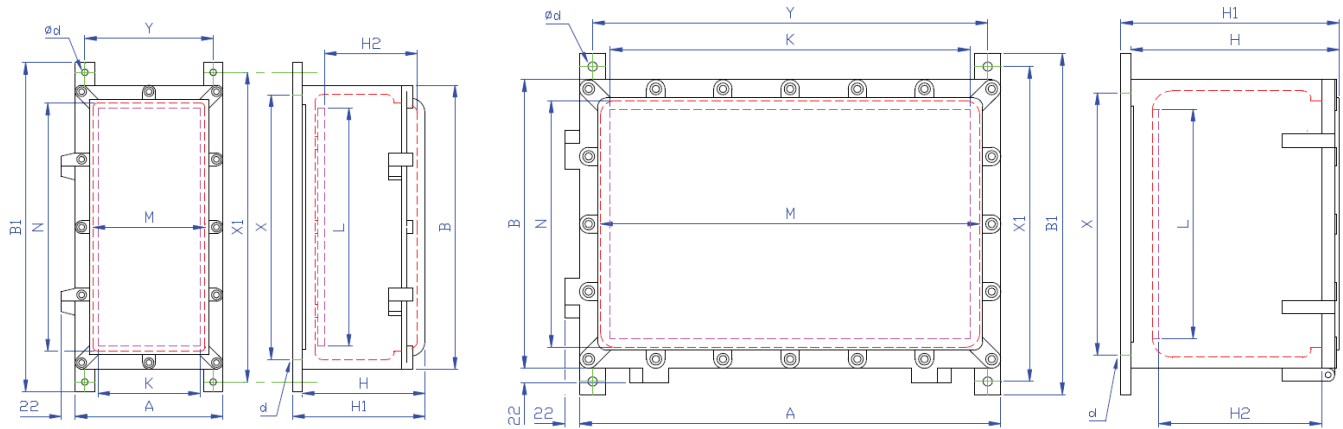
**Certificate Nos -** TRAC12ATEX0020X  
IECEX TRC 12.0008X

**Temperature -** -20°C to +60°C

## Certification:



## Dimensions



ENCLOSURE	OVERALL DIMENSIONS						MOUNTING DETAILS					MOUNTING PLATE		ENCL. OPENING		WT KG
	Cat. No	A	B	B1	H	H1	H2	X	X1	Y	d	Ød	K	L	M	
EJBS1	180	260	330	193	208	145	230	300	150	M8	10	120	200	125	205	9
EJBS2	230	440	510	191	206	120	410	480	200	M8	10	165	375	173	384	13.9
EJB3	350	270	350	262	277	190	240	310	320	M12	14	280	200	290	210	18.5
EJB4	430	330	410	282	297	207	290	370	390	M12	14	345	255	360	260	30
EJB5A	640	440	520	317	332	215	400	480	600	M12	14	565	350	576	376	68

## Ordering Information

Flameproof Ex d transformers up to 8000VA, standard voltages are 415V primary and 110V secondary with both windings protected by fuses. Variations to our standard can include primary and secondary voltages and pilot lights for power on indication. Customer specifications can also be included.

## Standard Models

Rating	Catalogue No.	Entries	Enclosure
100VA	FPT 01	2 x M20	EJBS1
250VA	FPT 02	2 x M20	EJBS2
500VA	FPT 03	2 x M20	EJB3
750VA	FPT 04	2 x M20	EJB4
1000VA	FPT 05	2 x M20	EJB4
1500VA	FPT 06	2 x M20	EJB4
2000VA	FPT 07	2 x M20	EJB4
2500VA	FPT 08	2 x M20	EJB4
3000VA	FPT 09	2 x M25	EJB5A

Note: Larger ratings are available on request.



**JCE (Europe) Ltd**, East Way, Lee Mill Industrial Estate, Ivybridge, PL21 9LL  
 Tel. +44 (0) 1752 690530  
 E-Mail: info@jcegroup.com

**JCE Group (UK) Ltd**, Blackburn Business Park, Aberdeen, AB21 0PS  
 Tel: +44 (0) 1224 798600  
 E-Mail: info@jcegroup.com

- Details of certification and conformity can be provided on request.
- All products sold subject to our terms and conditions of business.
- Health and Safety at Work Act 1974. In the UK all equipment must be installed and disposed of (as required) within the legislative requirements of the Health & Safety at Work Act 1974.
- We reserve the right to make alterations to the technical data dimensions, weights, designs and product available without notice.
- The illustrations should not be considered legally binding.