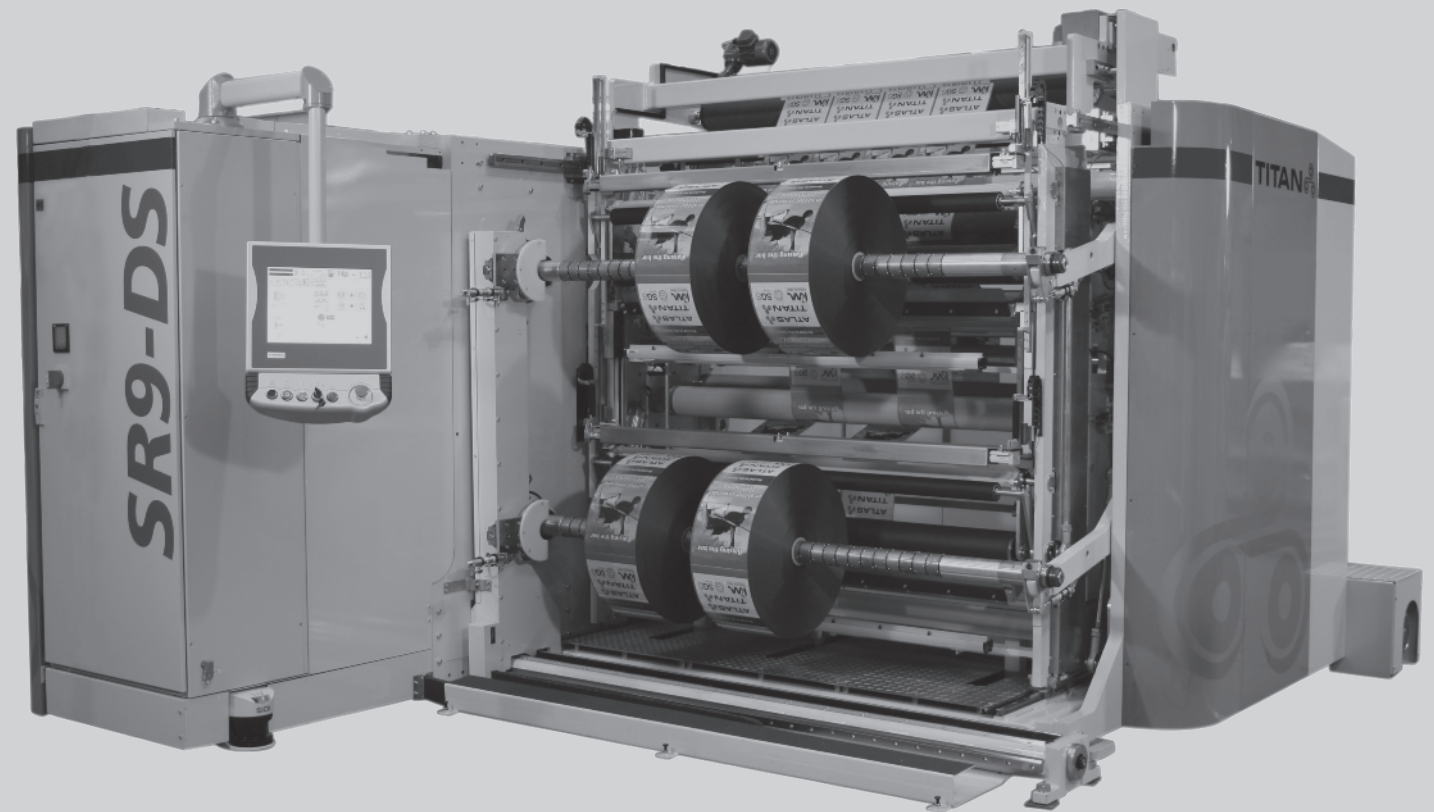


Titan SR9-DS Duplex Slitter Rewinder



Titan SR9-DS Duplex Slitter Rewinder



The Titan SR9-DS Duplex Slitter Rewinder is part of the next generation Titan SR9 Series technology platform, providing converters and film producers with the ultimate flexibility in slitting & rewinding solutions.

The SR9-DS can be configured for current production requirements and through its unique modular design there is a simple and economical upgrade path to ensure future production demands can also be met.

Incorporating innovative and proven design features, the Titan SR9-DS sets a new benchmark in productivity for a duplex slitter rewinder. With a production speed of up to 1000m/min (3300ft/min.), a unique Linear Tracking Slitter section (LTS), Rewind Clamp Cut-off (RCC) and Rewind Stick Down (RSD²) options, the SR9-DS provides slitting/rewinding production output previously unobtainable from a duplex slitter rewinder.

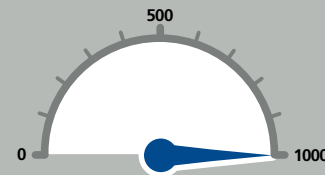
Standard features

- **SDC** - Servo Driven Chucks
– Driven unwind
- **DPU** - Digital Positioned Unwind
– No hydraulics
- **PPD¹** Positive Positional Device
– Knife positioning
- **LTS** - Linear Tracking Slitter Section
– Improved slit reel edge profile
- **LTC** - Linear Tracking Contact Rollers
– Improved contact pressure adjustment
- Overhead web path
– Clean environment

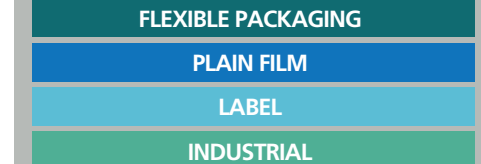
Unique features

- **ORC** - Optimum Roll Conditioning
– Maintains high productivity
- **MST^v** - Moving Splice Table
– Ergonomic design
- **GKP²** - Guider Knife Positioning
– Waste reduction
- **KPS³** - Knife Positioning Systems
– Multiple options
- **RCC** - Rewind Clamp Cut-off
– Eliminates operator intervention
- **RSD²** - Rewind Stick Down
– Eliminates operator intervention

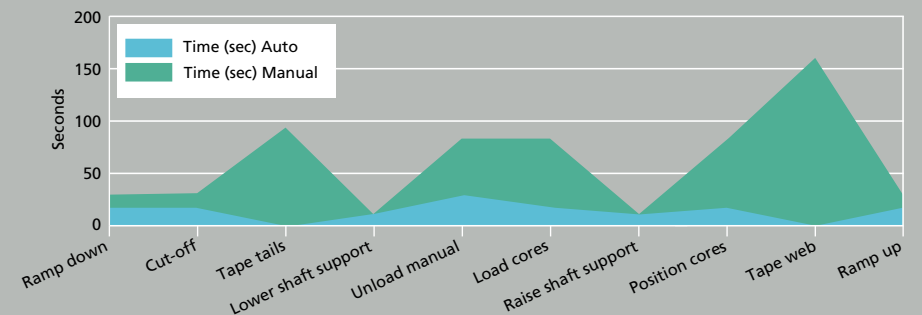
Production Speed (m/min)



Market Sector

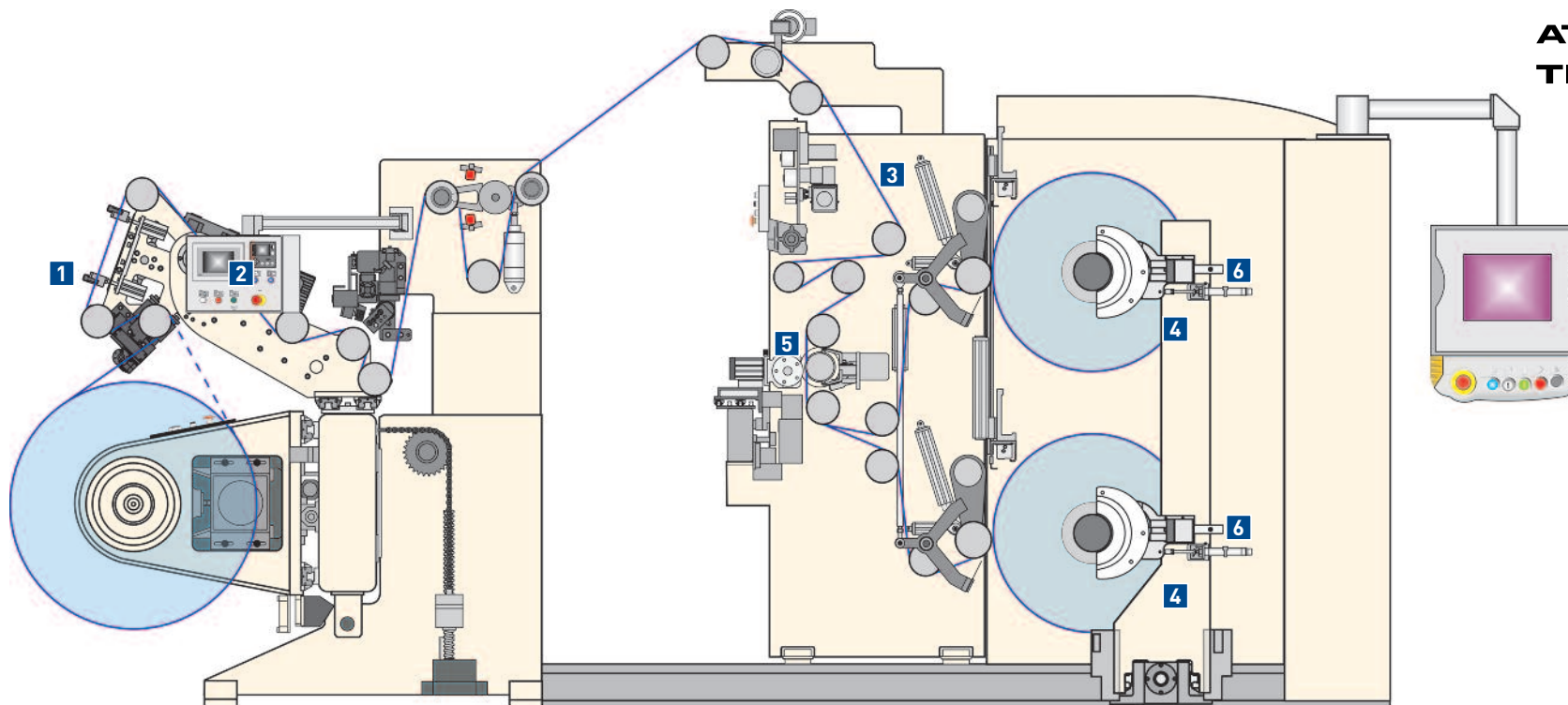


Automatic v Manual – Duplex set change time



Auto Specification includes SCP² - Servo Core Positioning, RSD - Reel Stripping Device, RCC - Rewind Clamp Cut-off and ATD² - Automatic Tape Down applicator

Manual Specification includes Laser Core Positioning only, with none of the above automation



1 MST^V – Moving Splice Table (Opt.)
Ergonomically positioned movable splice table saves time and reduces waste. The splice table is supplied with clamps and vacuum, enabling the web to be held throughout the splicing procedure, providing a more accurate join.



3 LTS - Linear Tracking Slitter section
Minimising the distance between the knives and the rewind shaft provides better control of the slit webs ensuring the highest side wall quality.



5 KPS³ - Knife Positioning Systems
The Titan SR9-DS provides a variety of knife positioning systems, from manually positioned to semi-automatic and fully automatic systems.



2 GKP² - Guider to Knife Positioning (Opt.)
Enables the first knife to be set from the edge guide sensor position, reducing waste pulled through the machine for alignment.



4 RCC – Rewind Clamp Cut-off (Opt.)
The RCC option clamps the web at each rewind shaft and cross cuts all slit webs, dramatically reducing the operator time required between sets.



6 RSD - Reel Stripping Device (Opt.)
The RSD option enables the complete set of reels to be removed from the rewind shafts at the same time.

DPU - Digital Positioned Unwind
All functions of the unwind – pick-up from floor, unwind arm positioning and edge guide control are motor driven, providing more accurate control, reduced power consumption and with no hydraulics, gives a cleaner environment.

Unwind Regenerative Braking
As standard, the unwind is AC servo motor driven / braked providing an accurate tension control system.

RSD² – Rewind Stick Down (Opt.)
RSD² uses an automatic double-sided tape applicator and in conjunction with the RCC, the individual rewind web tails are stuck down on the finished reel and / or the cores.

RCP³ - Rewind Core Positioning (Opt.)
The Titan SR9-DS provides two options for core positioning, from simple multiple laser line positioning to semi-automatic servo core positioning.

Machine Specification

| Technical Data | | |
|---|--------------------------------|--------------------------------|
| Web Width | 1650mm (65in) | 2250mm (88in) |
| Maximum Unwind Diameter <i>Option</i> | 1100mm (43in) 1500mm (59in) | 1100mm (43in) 1500mm (59in) |
| Maximum Rewind Diameter | 850mm (33in) | 850mm (33in) |
| Maximum Production Speed* | 1000 m/min (3,300 ft/min) | 700 m/min (2,300 ft/min) |
| Min/Max Slit Widths | 50mm/900mm (1.97 / 35in) | 50mm/1100mm (1.97 / 43in) |

**Dependent on materials, slit widths and core quality*

| Materials | |
|--------------------------|--|
| Film | Plain, printed, coated or metallized from 20 to 200 micron |
| Laminates | Various materials from 20 to 200 micron |
| Paper & Board | Paper from 40 to 200 gsm |

Europe
Atlas Converting Equipment Ltd.
8 Wolsley Road,
Woburn Road Industrial Estate
Kempston
Bedford
MK42 7XT
United Kingdom
T: +44 1234 852553
F: +44 1234 851151
sales.atlas@atlasconverting.com
sales.titan@atlasconverting.com
service@atlasconverting.com

America
Atlas Converting North America, Inc.
9801-F Southern Pine Boulevard
Charlotte
NC 28273
United States of America
T: +1 704 587 2450
F: +1 704 587 2451
sales.usa@atlasconverting.com
service@atlasconverting.com

Asia
A.C.E. (Shanghai) Trading Co. Ltd.
6P, New Shanghai International Tower
360 South Pudong Road
Shanghai 200120
China
T: +86 21 6886 2501
F: +86 21 6886 2502
sales.atlas@atlasconverting.com
sales.titan@atlasconverting.com
service@atlasconverting.com

Atlas Converting Equipment (India) Pvt. Ltd.
Plant No.13, Extension Office Building
Eastern Express Highway
Pirojsha Nagar, Vikhroli (East)
Mumbai 400 079
India
T: +91 992 081 9791
F: +91 222 623 3009
sales.atlas@atlasconverting.com
sales.titan@atlasconverting.com
service@atlasconverting.com

