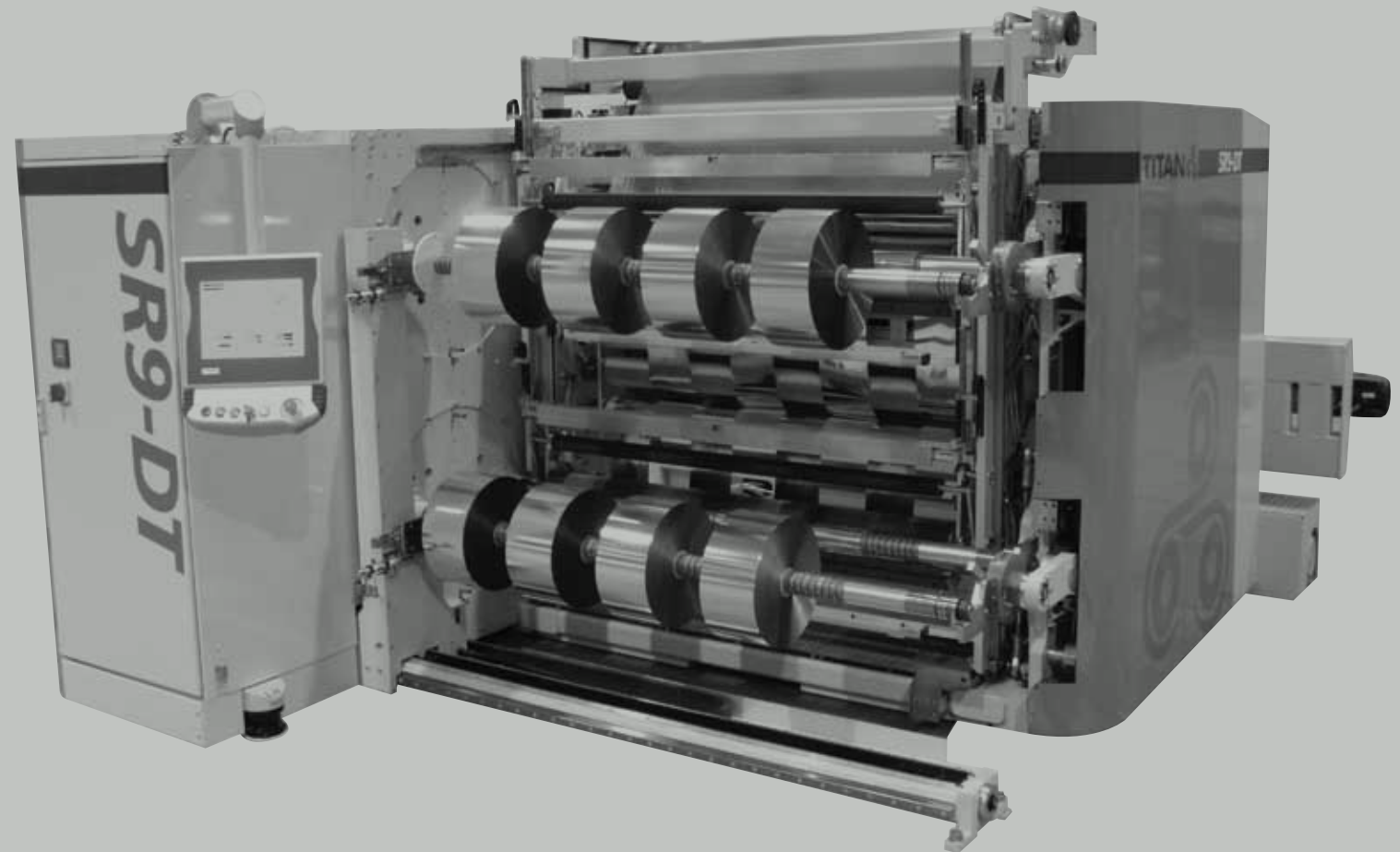


Titan SR9-DT Dual Turret Slitter Rewinder



Titan SR9-DT Dual Turret Slitter Rewinder



The Titan SR9-DT Dual Turret rewinder continues to build upon the flexible and modular design first introduced with the Titan SR8 slitter – giving converters the flexibility to build a slitter rewinder suitable for current production, but also providing a simple and economic modular path to ensure future requirements can also be met with the same machine.

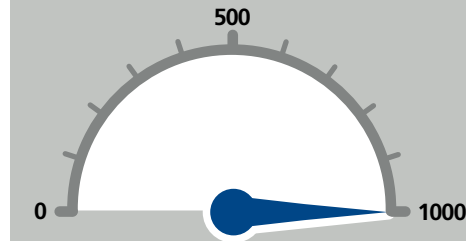
Standard features

- **SDC** - Servo Driven Chucks
– Driven unwind
- **DPU** - Digital Positioned Unwind
– No hydraulics
- **PPD¹** Positive Positional Device
– Knife positioning
- **LTS** - Linear Tracking Slitting section
– Excellent reel quality
- Overhead web path
– Clean environment
- Unique turret sequence
– Reduce cycle time

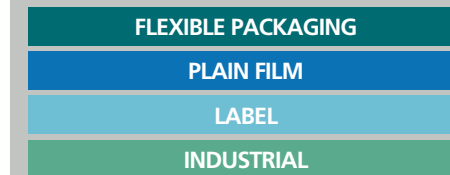
Unique features

- **ORC** - Optimum Roll Conditioning
– Maintains high productivity
- **MST^V** - Moving Splice Table
– Ergonomic design
- **GKP²** - Guider Knife Positioning
– Waste reduction
- **KPS³** - Knife Positioning Systems
– Multiple options
- **RCC** - Rewind Clamp Cut-off
– Eliminates operator intervention
- **RSD²** - Rewind Stick Down
– Eliminates operator intervention

Production Speed (m/min)



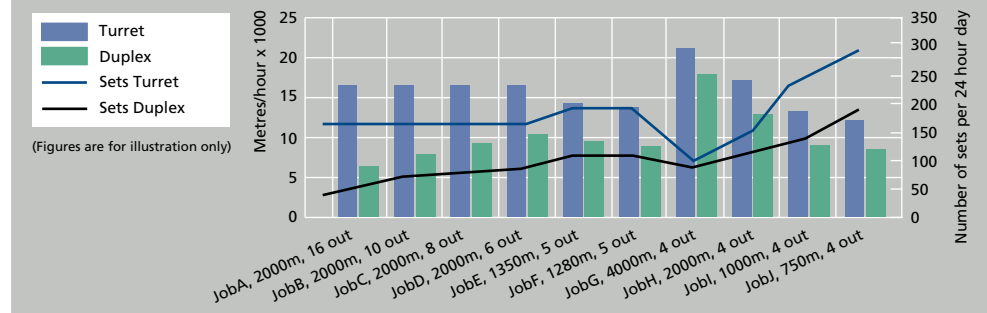
Market Sector

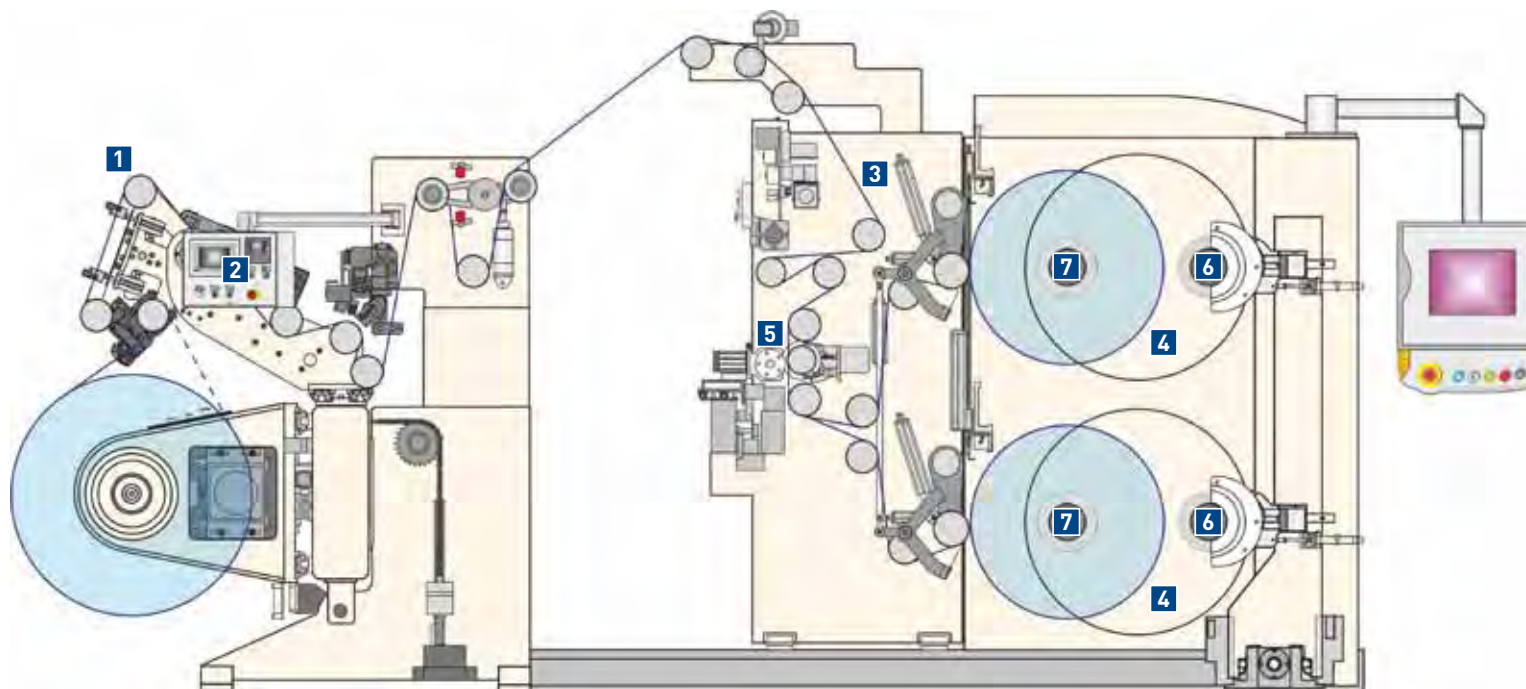


Cycle Time from Stop to Restart



Turret v Duplex – Rewinding Productivity





1 MST^v – Moving Splice Table (Opt.)
Ergonomically positioned movable splice table saves time and reduces waste. The splice table is supplied with clamps and vacuum, enabling the web to be held throughout the splicing procedure, providing a more accurate join.



2 GKP² - Guider to Knife Positioning (Opt.)
Enables the first knife to be set from the edge guide sensor position, reducing waste pulled through the machine for alignment.

DPU - Digital Positioned Unwind
All functions of the unwind – pick-up from floor, unwind arm positioning and edge guide control are motor driven, providing more accurate control, reduced power consumption and with no hydraulics, gives a cleaner environment.

Unwind Regenerative Braking
As standard, the unwind is AC servo motor driven / braked providing an accurate tension control system.

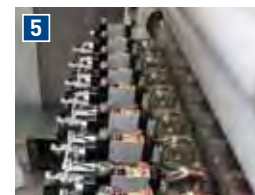


3 LTS - Linear Tracking Slitter section
Minimising the distance between the knives and the rewind shaft provides better control of the slit webs ensuring the highest side wall quality.



4 RCC – Rewind Clamp Cut-off (Opt.)
The RCC option clamps the web at each rewind shaft and cross cuts all slit webs, dramatically reducing the operator time required between sets.

RSD² – Rewind Stick Down (Opt.)
RSD² uses an automatic double-sided tape applicator and in conjunction with the RCC, the individual rewind web tails are stuck down on the finished reel and / or the cores.



5 KPS³ - Knife Positioning Systems
The Titan SR9-DT provides a variety of knife positioning systems, from manually positioned to semi-automatic and fully automatic systems.



6 RSD - Reel Stripping Device (Opt.)
The RSD option enables the complete set of reels to be removed from the rewind shafts at the same time.

RCP³ - Rewind Core Positioning (Opt.)
The Titan SR9-DT provides two options for core positioning, from simple multiple laser line positioning to semi-automatic servo core positioning.



7 TSD - Turret Support Device (Opt.)
The Titan SR9-DT can be configured with the TSD - a rotating turret support device enabling the turret to be rotated faster and reducing shaft fatigue.

Machine Specification

Technical Data		
Web Width	1650mm (65in)	2250mm (88in)
Maximum Unwind Diameter	1100mm (43in)	1100mm (43in)
<i>Option</i>	1500mm (59in)	1500mm (59in)
Maximum Rewind Diameter	700mm (28in)	700mm (28in)
<i>Option</i>	850mm (33in)	850mm (33in)
Maximum Production Speed*	1000 m/min (3,300 ft/min)	700 m/min (2,300 ft/min)
Min/Max Slit Widths	20mm / 1100mm (0.80 / 43 in)	50mm / 1100mm (1.97 / 43 in)

*Dependent on materials, slit widths and core quality

Materials	
Film	BOPP, BOPET, BOPA, CPP, HDPE and LDPE, Plain, printed, coated or metallized from 10 to 200 micron
Laminates	Various materials from 20 to 200 micron
Paper & Board	Paper from 40 to 200 gsm

Europe
Atlas Converting Equipment Ltd.
8 Wolseley Road
Woburn Road Industrial Estate
Kempston
Bedford
MK42 7XT
United Kingdom
T: +44 1234 852553
F: +44 1234 851151
sales.atlas@atlasconverting.com
sales.titan@atlasconverting.com
service@atlasconverting.com

America
Atlas Converting North America, Inc.
9801-F Southern Pine Boulevard
Charlotte
NC 28273
United States of America
T: +1 704 587 2450
F: +1 704 587 2451
sales.usa@atlasconverting.com
service.usa@atlasconverting.com

Asia
A.C.E. (Shanghai) Trading Co. Ltd.
6P, New Shanghai International Tower
360 South Pudong Road
Shanghai 200120
China
T: +86 21 6886 2501
F: +86 21 6886 2502
sales.atlas@atlasconverting.com
sales.titan@atlasconverting.com
service@atlasconverting.com

Atlas Converting Equipment (India) Pvt. Ltd.
Plant No.13, Extension Office Building
Eastern Express Highway
Pirojsha Nagar, Vikhroli (East)
Mumbai 400 079
India
T: +91 992 081 9791
F: +91 222 623 3009
sales.atlas@atlasconverting.com
sales.titan@atlasconverting.com
service@atlasconverting.com

