

technical datasheet



Xeric Seamless LA

Description

Xeric Seamless LA is a high quality cold applied polymer modified bituminous liquid waterproofing membrane. Typically used as a continuous waterproof sandwich membrane for above and below ground concrete brickwork. When applied correctly, Xeric Seamless LA provides levels of protection required for below ground structures as described in BS 8102 : 1990, grades 1, 2, 3 & 4.

Advantages

- ▶ Seamless - conforms to irregularities.
- ▶ High tensile strength and elongation
- ▶ Dynamic structural crack bridging capability - more than 40mm
- ▶ Use on surface dry and green concrete
- ▶ Excellent adhesion - primerless
- ▶ Resistant to sulphates
- ▶ Suitable for steel

Applications Include

- ▶ Bridge abutments
- ▶ Floor slabs
- ▶ Basements
- ▶ Roof Gardens
- ▶ Tunnels
- ▶ Vertical and horizontal use
- ▶ Use on steel work

Installation

Concrete, screed or render should be free of contamination which could impair adhesion. Protrusions greater than 3mm should be removed. Brick and blockwork should be flush pointed.

Using a wide nylon brush, sheepskin rollers or airless spray apply the product in 2 equal coats. Allow the first coat to dry before application of the second coat (normally 24 hours). Avoid use in wet or freezing conditions. Clean tools using white spirit or hydrocarbon solvent.

Protection

Xeric Seamless LA should be protected by a layer of concrete, a screed of 50mm or by brick and blockwork. Use Proteq protection board when back filling.

Tanking

When subjected to negative water pressure the membrane should be internally loaded by a single skin of brick or blockwork with a 20mm cavity. This should be filled using mortar or non shrink grout as construction proceeds. Fillet and Xeric Reinforcing strip should be used in corners and changes of direction.

Ancillary Products

Proteq protection boards.

Xeric Twin Tape for use with protection boards/*Xeric Filtadrain*.

Xeric Filtadrain - composite drainage sheet also protects when back filling.

Plyboard DPC - compatible with *Xeric Seamless*.

Xeric Reinforcing strip - Used in corners and change in direction.

Xeric Fillet - Use in corners.

Storage

Store in a cool dry place. Protect from frost.

Supply

5 & 25 Litre containers.

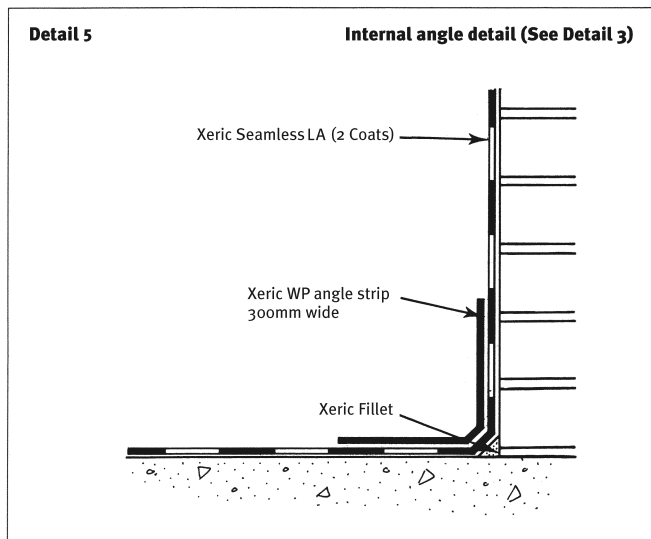
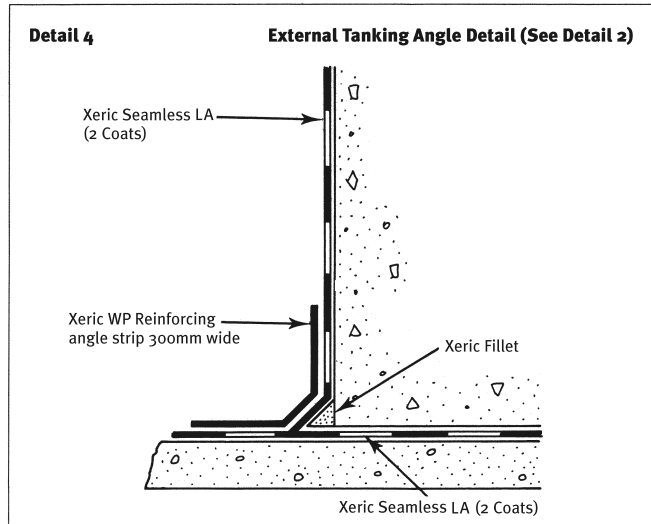
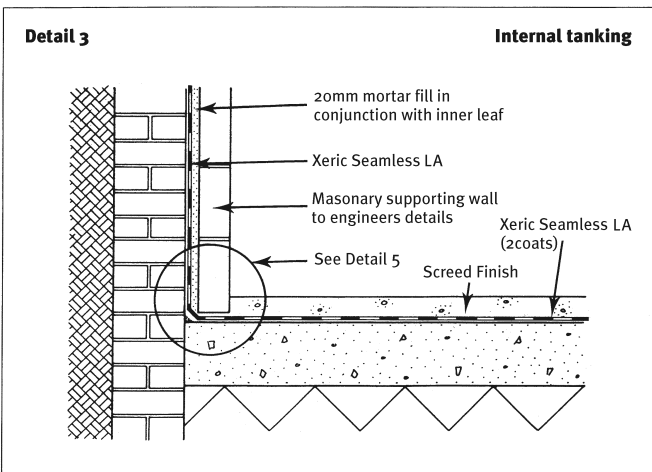
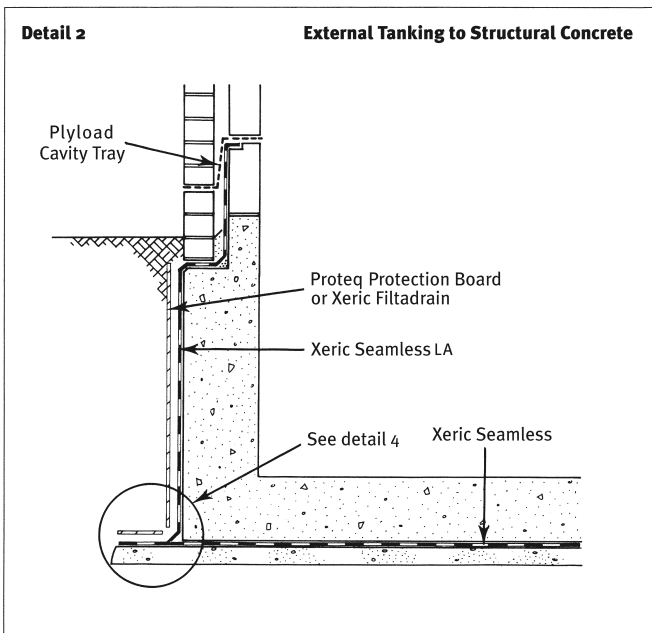
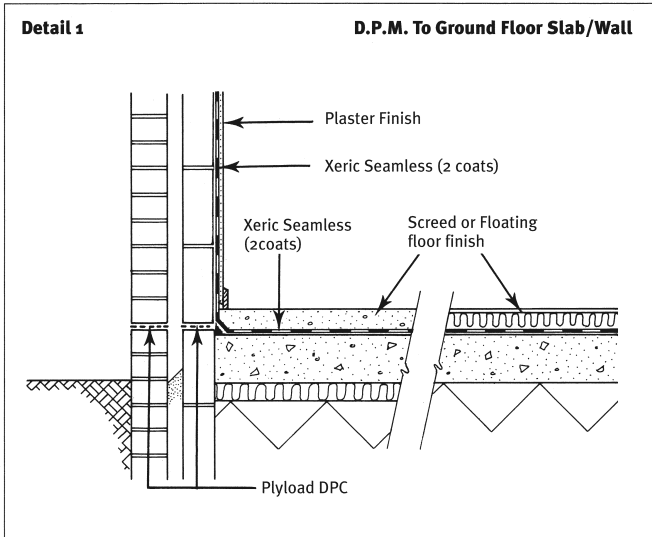
Health & Safety

Flammable. Avoid skin contact, wear suitable protective clothing, refer to the materials safety data sheet.

Technical Data

Colour:	Black
S.G.	1.00
Coverage:	.5 litres/m ² per coat concrete
Steel	.3 litres/m ² per coat
W.F.T. (per coat):	500 microns
D.F.T. (Total 2 coats):	750 microns
Tack free time:	1 hour dependant on temperature
Full Cure:	24 hours
Recoat time:	24 hours
Crack bridging EN 10627:	>40mm
Elongation at break:	>1280%
ASTM D412	
Water vapour permeability:	33 x 10 ¹² kg/m ² sPa
Full physical properties:	7 days
Application temperature:	5-35°C

leach way, burma road, blidworth industrial estate, blidworth, nottinghamshire ng21 0ru
tel 0115 965 6111 fax 0115 965 5151 email sales@cordengroup.co.uk web www.cordengroup.co.uk



leach way, burma road, blidworth industrial estate, blidworth, nottinghamshire ng21 0ru
tel 0115 965 6111 fax 0115 965 5151 email sales@cordengroup.co.uk web www.cordengroup.co.uk

'Corden' branded products are guaranteed by Corden Group Ltd against defective materials and manufacture. We cannot however accept any liability arising from the application or use of our products because we have no direct or continuous control over where and how our products are used. All products are sold subject to our conditions of sale, copies of which may be obtained on request.