

Capabilities Bulk Materials Handling



Bulk Materials Handling Technologies

Introduction

Members of the Schenck Process Group, Redler® are leading providers of feeding, automation and bulk solids handling solutions.

The Schenck Process Group are global market leaders for solutions in measuring and process technologies in industrial weighing, feeding, screening and automation.

Always close to the customer, with an unrivalled global network of operating companies Redler® are your competent global partner for weighing, feeding, screening and automation solutions throughout the process industries.



Our philosophy is based on...

- ⊗ Continuous product development
- ⊗ Best practice approach to applications
- ⊗ Raising industry standards



Capabilities

- ⊗ Single Machine
- ⊗ Multiple Machines
- ⊗ System Solutions
- ⊗ Installation & Commissioning
- ⊗ Plant Layout & Integration
- ⊗ Engineering & Contract Management
- ⊗ Professional Customer Service Approach



Industries

- ⊗ Power, Coal, Steel, Cement, Mineral, Chemical, Grain Processing, Brewing/Malting, Flour/Feed, Food, Particle Board, Recycling, Waste Water Treatment

The Schenck Process Group develops, manufactures and markets a full range of solutions, products and turnkey systems on the basis of combining process engineering expertise, reliable components and field-proven technology.

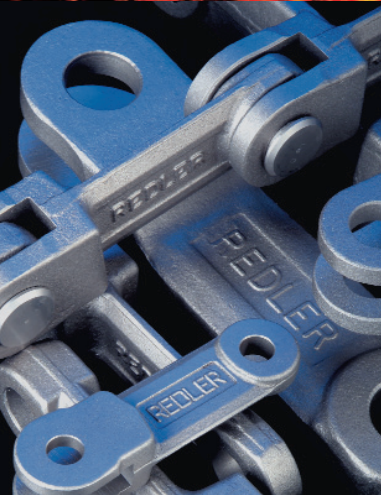
Members of the Schenck Process Group are:





Redler[®], the originators of the world renowned 'En Masse' system of bulk materials handling continue to be at the forefront of systems development and supply.

With 90 years of experience the Redler[®] 'En Masse' system of handling is well proven with thousands of conveyors and elevators supplied to an extensive range of customers worldwide.



High Strength Chain Links

- ❖ Drop forged from alloy steel
- ❖ Precision machined
- ❖ Case hardened to RC57 min
- ❖ High tensile strength
- ❖ Consistent dimensional accuracy
- ❖ High quality manufacturing procedures



High Quality Flighted Links

- ❖ Wide range available
- ❖ Designs to suit applications
- ❖ T/U/I/H designs
- ❖ Scavenger/Pad/Scoop flights
- ❖ Variable flight configuration
- ❖ High quality manufacturing procedures

Pins

- ❖ Alloy steel - case hardened
- ❖ Options available for abrasive, corrosive & arduous applications.



Conveyor Technologies

- ❖ Extensive range of Chain Conveyors
- ❖ Capacities from 1-2000 tonnes per hr
- ❖ Thousands of references worldwide
- ❖ Construction, mild steel to stainless steel
- ❖ Wear & Corrosion resistant designs
- ❖ Dust tight & Waterproof
- ❖ Heavy duty gas tight
- ❖ High temperature/pressure tight construction option
- ❖ Quality & best practice design throughout



MoveMaster® Chain Conveyor Product Ranges

- ❖ 1000 Range - Grain & Food
- ❖ 2000 Range - Grain & Food
- ❖ 3000 Range - Alternative Fuels
- ❖ 4000 Range- Grain & Food
- ❖ 4000 Range- Process



Elevators

Where industrial processes require materials to be transported vertically or up inclines, Redler® select the appropriate equipment based on a careful analysis of each specific set of conditions within the process.

- ❖ Capacities 1-1500 tonnes per hr
- ❖ Worldwide references



MoveMaster® Elevator Product Ranges

Our range of Elevators serves a broad spectrum of applications and employs three well proven & reliable elevating technologies.

- ❖ En Masse Chain Elevators
- ❖ Belt & Bucket Elevators
- ❖ Chain & Bucket Elevators



'En Masse' Elevator

- ❖ Redler® originators of the 'En Masse' principle
- ❖ Gentle handling of materials
- ❖ Construction options similar to that of the chain conveyor
- ❖ Elevator adaptable to suit individual applications
- ❖ Ideal industrial process selection
- ❖ Preferred ATEX option for elevating



Our Bucket Elevators provide the power & efficiency required for large capacity work such as silo & bunker filling and other applications in excess of 80 meters vertical lift.

- ❖ Modular construction
- ❖ Environment compliance
- ❖ Easily installed & maintained



PortBulk®

- ⊗ Portside applications
- ⊗ Grab entry into hopper
- ⊗ Integral dust suppression
- ⊗ Heavy duty construction
- ⊗ Outloading to vehicles
- ⊗ Outloading to transfer system



FulFiller®

- ⊗ Modular portable unit
- ⊗ High speed filling of containers
- ⊗ Maximises available storage capacity
- ⊗ Meets logistics industry criteria
- ⊗ Safe/good access for maintenance



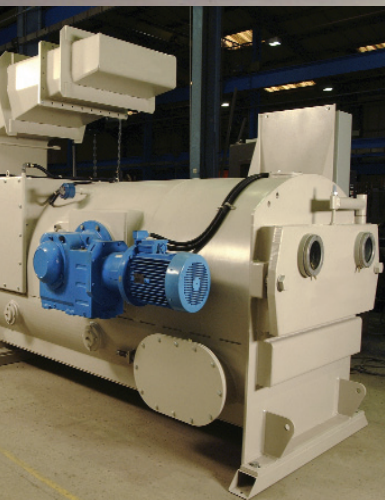
MaxiStore®

- ⊗ Portside or inland applications
- ⊗ Used within new or existing storage facility
- ⊗ Redler® En Masse conveying principle
- ⊗ Even distribution throughout the store
- ⊗ Maximises storage capacity



FloMaster®

- ⊗ Fitted beneath circular silos or bins
- ⊗ Positive discharge of difficult materials
- ⊗ No bridging or blockage at the silo outlet
- ⊗ Compact construction
- ⊗ Versatile in material control
- ⊗ Single, Two or Three Stage units
- ⊗ Totally enclosed
- ⊗ Safe/good access for maintenance



Coal Feed Systems

- ⊗ Bunker to pulverizer system supply
- ⊗ Gravimetric feeder
- ⊗ Volumetric Feeder
- ⊗ Belt or Chain feeder options
- ⊗ Various slides/valves available
- ⊗ Automated Microprocessor control



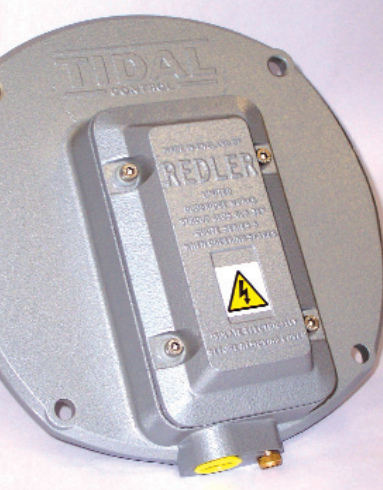
IntraBulk®

- ⊗ Above ground intake
- ⊗ Feed from road vehicle or loader
- ⊗ Fast vehicle turn around time
- ⊗ Can act as a buffer store
- ⊗ Controlled discharge into process
- ⊗ Modular heavy duty construction
- ⊗ Quick installation & commissioning



RoCon® Unit

- ⊗ Electronic rotational speed sensor
- ⊗ Provides protection for all conveyors, elevators & items with a rotating shaft
- ⊗ Detects speed change
- ⊗ Detects machine stoppage
- ⊗ Interface with PLC automated control
- ⊗ ATEX compliant for Zone 21 & 22
- ⊗ Easily installed/low cost



Tidal Control Unit

- ⊗ Controls flow & storage of product within a bulk handling system
- ⊗ Detects levels within a silo or bunker
- ⊗ Detects a blockage in a chute or hopper
- ⊗ Heavy duty construction
- ⊗ Adjustable for operational pressure
- ⊗ Choice of diaphragms to suit material
- ⊗ Easily installed/low cost



Slide Gates & Valves

- ⊗ Range of various slide gates & diverter valves to suit numerous applications throughout the industries covered by Redler®
- ⊗ Heavy duty construction
- ⊗ Manual or automated control
- ⊗ Totally enclosed working parts
- ⊗ Reliable/long life/proven design

Customer Service The Complete Package

Redler® are totally committed to providing the highest standards of customer support. Redler® operate with a philosophy of continual improvement and are able to offer our customers an innovative programme that sets a new benchmark in preventative maintenance and breakdown response.

We call it 'PASS' Process Advanced Service System



Customer Support

- ❖ Replacement components
- ❖ Machine enhancement
- ❖ Equipment upgrade kits
- ❖ Unparalleled customer support



PASS - Solution

- ❖ Preventative Maintenance & Service
- ❖ Tailored inspection & maintenance programme
- ❖ Rapid diagnosis of problems
- ❖ Improved operational & Plant efficiency

Site Services

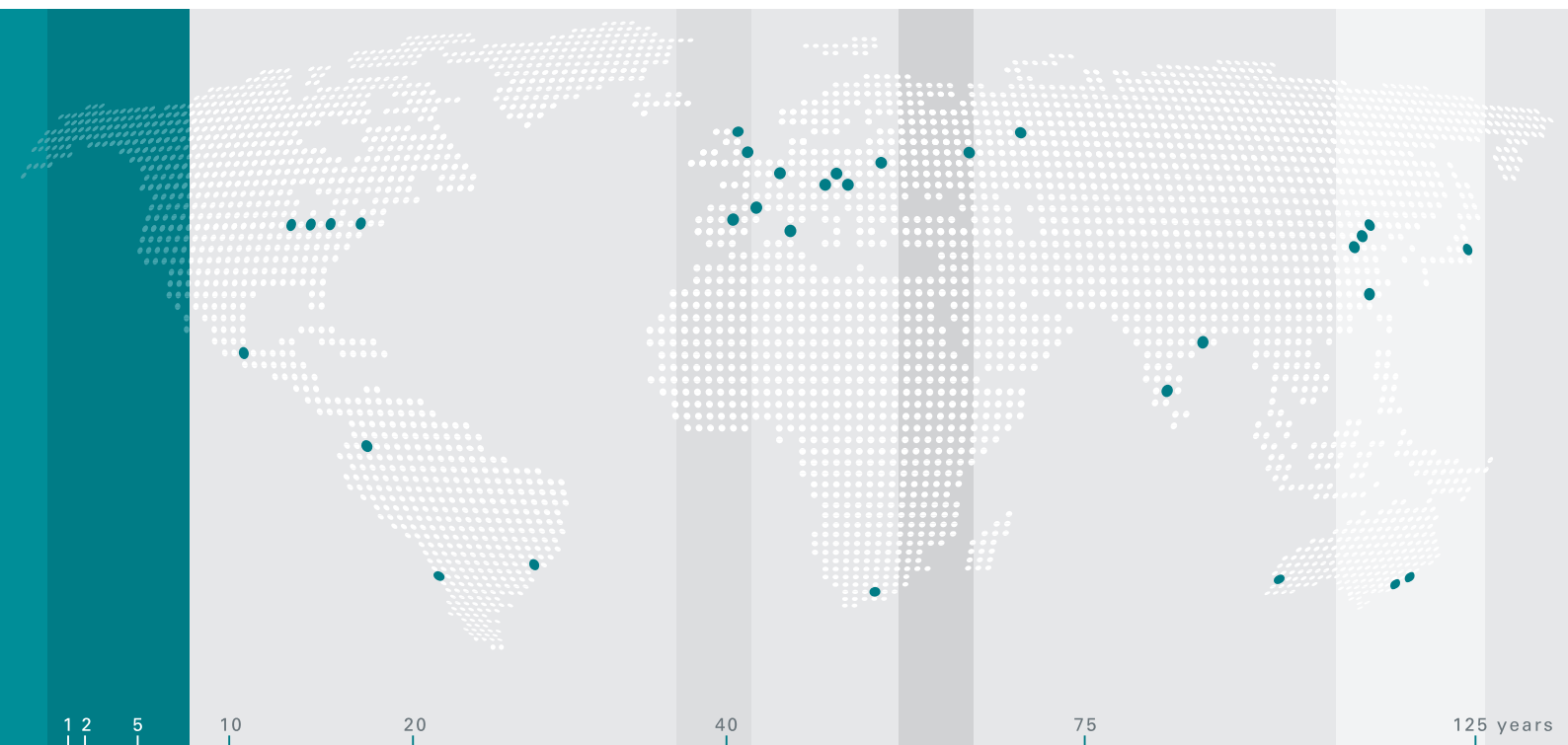
- ❖ Highly qualified & competent team of engineers
- ❖ Ability to service & repair all types of machines within a Bulk material handling system
- ❖ Emergency call out 24/7 available
- ❖ Installation & commissioning capabilities

weighing

feeding

conveying

automation



Redler®
Redler House
Dudbridge, Stroud
Gloucestershire
GL5 3EY England
T +44 (0) 1453 763 611
F +44 (0) 1453 763 582
sales@redler.com
www.redler.com

Schenck Process GmbH
Pallaswiesenstraße 100
64293 Darmstadt
Germany

T +49 61 51-15 310
F +49 61 51-15 31 11 72
sales@schenckprocess.com
www.schenckprocess.com



we make processes work