

J2200 Benchtop Robot Dispenser

Space saving mini robot J2200

Presenting the first in a series of easily programmed Cartesian robots. The model J2200 series is extremely economical on bench space, occupying a footprint of only 12.60 x 14.84 inch (320 x 377mm). Simple to program using a supplied teach pendant or optional Windows based software. The J2200 robot features internal program memory of up to 255 different programs.

Operation

The Cartesian robots automatically interpolate lines and curves in all axes. The model J2204 also includes tool rotation. The powerful yet user-friendly software provides simple prompts, allowing programs to be created quickly and easily. It is possible to program and be operational within minutes.

Features

- Dispense area 7.87 x 7.87" (200mm x 200mm).
- Dots, lines, arcs and circles
- Gaskets, potting, filling and shielding
- Repeatability 0.01mm for precision dispensing
- Simple teaching - no computer skills required
- Up to 255 programs or 30,000 points of storage
- Fast, accurate and reliable 24 hours a day



Programming

- Multi line backlit teach pendant
- Continuous path motion for perfect dispensing
- Automatically interpolates any line or arc
- Three-dimensional interpolation
- Windows® and CAD input of coordinates software available optional cost

Connectivity

System includes 16 I/O signal interface for connection to tools and controllers. Usually supplied with a digital controller featuring 0-100 psi adjustable air regulator, teach pendant with cable, CE compliance kit, start/ stop button and box, I/O cable, power cables, air hoses, 30cc & 55cc syringe kit, needle selection box with 145 assorted tips, instruction manuals on CD ROM.

Pricing and Lead Times

Please contact us for pricing. Lead times are around 4-5 weeks from time of order. We sometimes have display models available for faster lead times.

Warranty

Robots and dispensing equipment are covered by a 1 year warranty.

Options

J2202	2 Axis Bench Robot
J2203	3 Axis Bench Robot
J2204	4 Axis Bench Robot
J2000-02	Teach Pendant Replacement
J2200-WIN	Windows Programming Software
J2000-03DX	I/o Cable from Robot to Dispenser
J2000-05	Syringe Mounting Bracket
J2000-07	Slide Assembly for Mounting Bracket
J2200-SC	Robot Enclosure with Light Guards

J2200 Benchtop Robot Dispenser

J2203-3 Axis Version

Operating range:	X axis/200mm Y axis/200mm Z axis/50mm
Load:	Worktable 15.4 lbs (7kg) Tool 7.7Lbs (3.5kg)
Speed PTP:	5-500 mm/sec X&Y, 2.5-250mm/sec Z
Speed CP:	0.1-500mm/sec XY & 0.1-250mm/sec Z
Repeatability:	±0.01mm per axis
Resolution:	XY & Z axes 0.01mm
Data memory capacity:	255 programs 30000 points
Drive system:	5-phase stepping motor
Operation system:	Point To Point and Continuous Path
Interpolation:	XYZ simultaneous (CP) 3D linear interpolation
Teaching method:	Remote & Manual Data Input (MDI) teaching
CPU:	32 bit (MC68EC020, MC68882)
PLC:	50 programs, 100 steps for each program
I/O signals:	16 input & 16 output signals
External interface:	RS232C - one channel for PC, one channel for the teach pendant and one channel for external equipment (optional)
Program loading:	Via internal memory
System backup:	Main unit has capacitor storage one (1) week
Memory storage:	Internal memory
Power supply 110V:	AC 90-132V consumption 200VA
Power supply 220V:	AC 180-250V consumption 200VA
Working temperature:	0 - 40° C
Relative humidity:	20 - 95% no condensation
Dimensions	12.60 x 14.84 x 21.10
(W x D x H):	(320 x 377 x 536mm)
Weight:	39.6 lbs (18 kg)

J2204-4 Axis Version

X axis/200mm Y axis/200mm Z axis/50mm R axis/ ± 360°
Worktable 15.4 lbs (7kg) Tool 7.7Lbs (3.5kg)
5-500 mm/sec X&Y, 2.5-250mm/sec Z, R 6-600°/sec
0.1-500mm/sec XY & 0.1-250mm/sec Z
±0.01mm per axis
XY & Z axes 0.01mm, R axis 0.02°
255 programs 30000 points
5-phase stepping motor
Point To Point and Continuous Path
XYZ & R simultaneous (CP) 3D linear interpolation
Remote & Manual Data Input (MDI) teaching
32 bit (MC68EC020, MC68882)
50 programs, 100 steps for each program
16 input & 16 output signals
RS232C - one channel for PC, one channel for the teach pendant and one channel for external equipment (optional)
Via internal memory
Main unit has capacitor storage one (1) week
Internal memory
AC 90-132V consumption 200VA
AC 180-250V consumption 200VA
0 - 40° C
20 - 95% no condensation
12.60 x 14.84 x 25.79
(320 x 377 x 655mm)
44 lbs (20 kg)

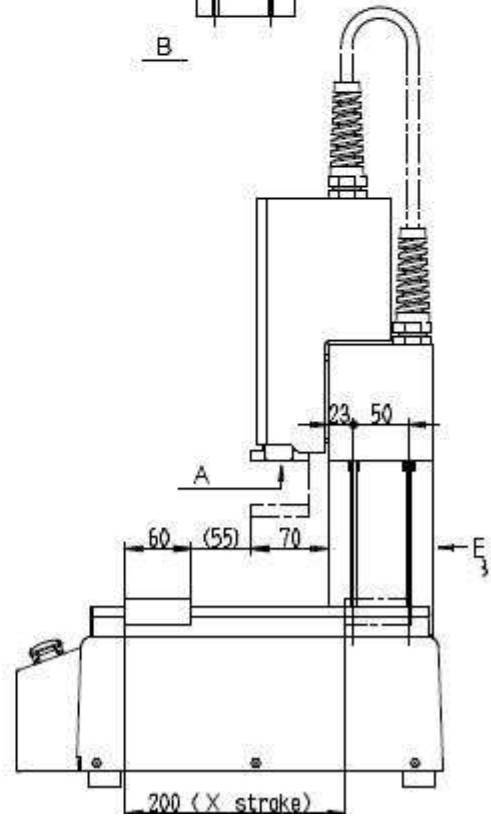
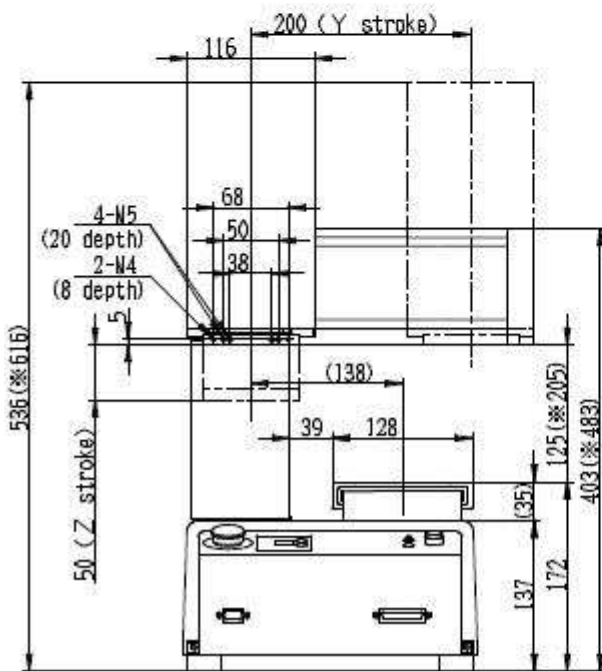
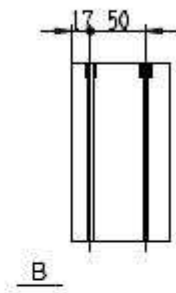
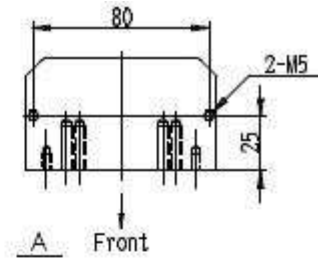
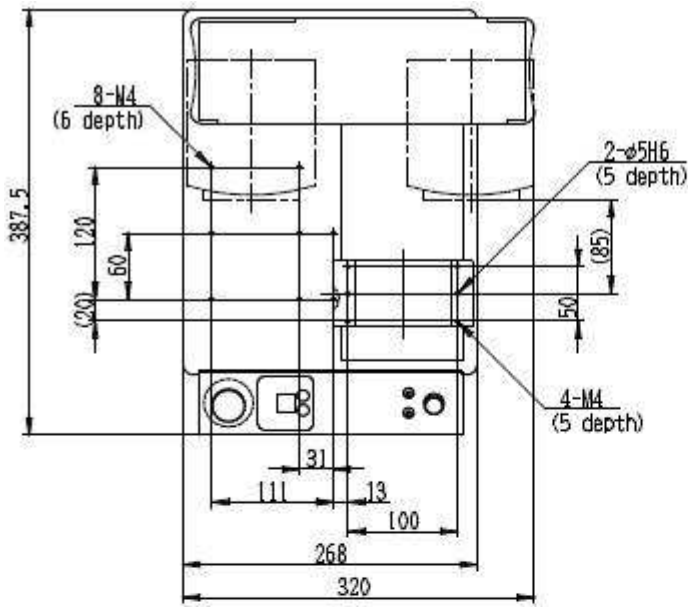
Standard robots are supplied with 30cc and 55cc syringe accessories. Optional metering valves and pressure pots are available. Please discuss options to suit your materials.

Robots are supplied ready for use with customers own base plate jig. Base plates and jigs should be as accurate as possible to ensure components do not move during the robot indexing.

Please contact us with details of your fluid dispensing application and obtain a quotation.

DATA SHEET

J2200 Benchtop Robot Dispenser



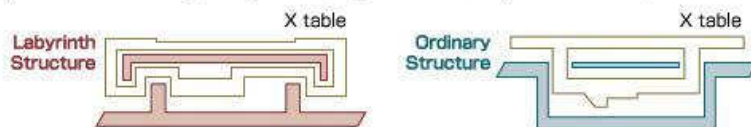
High precision

● High Rigid Structure

A solid aluminum alloy die cast is employed on the base and an aluminum alloy extrusion with a high rigid section is employed on the column.

● Labyrinth Mechanism

A special labyrinth mechanism underneath the work table prevents foreign objects (e.g. screws, liquid or dust).



● Smooth Movement

Smooth movement is attained with the micro-step control system.

● Flexible Interface

- RS-232C port for PC connection
- RS-422 port for teaching pendant
- I/O (Output 16, Input 16)

User friendly

● Clear Wide Screen

Wide and easily viewable teaching pendant screen.
Language : English/German/Japanese, etc
Measurement : mm/inch



The data, information and values contained in this Technical Data Sheet have been obtained by specific tests conducted in a controlled environment, and should be used for guidance purposes only. Although we believe them to be reliable and accurate, users should always conduct their own tests in their specific working conditions to ensure that the product is suitable and effective for use. It is the user's sole responsibility to determine the suitability of the product for the application. Adhesive Dispensing Ltd cannot be held responsible for the results of procedures undertaken elsewhere, nor for the safeguarding of personnel or property, all of which is the duty of the user. Suitability of products or methods is discretionary. Therefore, warranties or implied usage obligations should not be attributed to, and are not the responsibility of, Adhesive Dispensing Ltd. Adhesive Dispensing Ltd are not liable for any financial loss or other damages incurred by the user as a result of the use of this product. Product dimensions, specifications are can be subject to change, without notice.