

Bakery catalogue



CHARPAK LTD
Innovate | Design | Inspire



Contents

Welcome	03
Market Sectors	04
Materials	06
Design & Development	07
Sustainability	08
Bakery Catalogue.	11

Welcome

Chapak has been designing innovative, world class Thermo-formed packaging for the past 25 years and are confident we can offer clients the best possible packaging solution for their products and brands.

Our focus is on designing packaging that enhances your product onshelf, driving your sales. Our specialist team work on initial concepts through to the finished product. We can provide initial rendered drawings to enable you make decisions on how your product will look onshelf, we produce prototypes in-house which enable you to see and show the product to your customers and

we work with you to ensure we give you what you need. We guarantee the product that we design is manufacturable with quality at every stage of the process while ensuring the work is completed in the required timescale, giving the client peace of mind that any launch dates or deadlines will be met.

We play to our many strengths.... The company knows its market, can offer excellent technical support and in house tooling and prototyping that adds value to the clients packaging and the brand. We are able to work in partnership with you alongside your customers to enable you to improve sales.

We believe sustainability is the key to the future of packaging. We design the right packaging, fit for purpose. Our company ethos is to source UK produced recycled material with full food contact approval. We see packaging reduction as something positive for our business.

As forward-thinking market leaders we were one of the first companies in our sector to be accredited to the BRC/IOP standard for food packaging. With round the clock

production to ensure flexible rapid response to our customer's production whether it's a short or long production run or just a sample production run for test marketing purposes.

Chapak has evolved to embrace everything you'd expect from a visionary 21st century packaging company. We guarantee to find a solution to your needs and always deliver on time, As our company motto says.. "Packaging sells your product – but only if it's done right"... Chapak do it...RIGHT!!

25 Years of Providing Packaging Solutions



Market Sectors

Charpak has evolved to encompass all that you would expect from a packaging company of our experience and stature. Our products can be found in all the Major Bluechip Supermarkets, DIY Outlets and Retail Chains

Take a look through the market sectors to appreciate why Charpak have become the Number 1 choice for Design, Innovation and product quality.

Charpak are not just another Vacuum forming company we are much more! Our main purpose, as a supply partner, is to make life easier for you.

MEDICAL

Charpak Medical is leading the market with our superb 'class 7' (class 10,000) pharmaceutical cleanroom facility producing packaging for the most demanding product requirements.

This is a validated & monitored facility, which was designed and built for us by pharmaceutical cleanroom experts.

In addition to this facility we also have an extensive 'food-grade'

manufacturing facilities, giving Charpak customers extra flexibility to specify either environment in which to have their packaging produced.

Charpak Medical produces packaging for a complete range of products.

Our lead-times for new project & repeat orders are noted as being very rapid indeed.

From non-critical healthcare products to those where special requirements are needed such as; sterilisation, barrier properties, operating theatre use, effective protection, or device inter-action.

We provide a confidential, efficient, and complete service, as we have every aspect of our processes contained on-site. This includes extensive Design Capabilities, Rapid Prototyping, Engineering & Tool Making

workshops, extensive Technical and Polymer knowledge.

We are also happy to assist medical manufacturers, which have their own in-line thermo forming facilities, with their new projects. As experts in our field, and with extensive facilities, we can react very quickly, thus saving clients time & money and earning maximum income by bringing new products to market quickly and effectively.





FOOD & DRINK

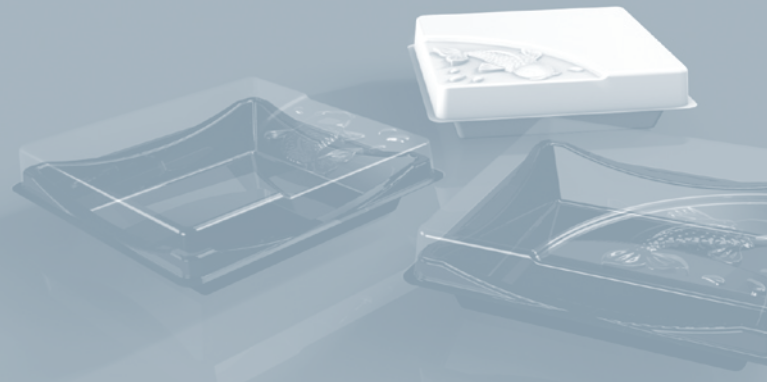
Charpak was one of the first packaging companies to obtain the BRC/IoP Technical Standard for direct contact food packaging which is now demanded by all the major supermarkets and retail chains. Apart from a wide range of custom designed food and bakery trays, straight-on trays and containers, Charpak also designs and produces a multitude of gift and promotional packages for this sector.

TOILETRIES & COSMETICS

From prestige gift packaging to good value FMCG packaging, Charpak's combination of design and manufacturing expertise has provided solutions to some of the household names in this sector.

MANUFACTURING SOLUTIONS

Many manufacturing processes require inexpensive but highly accurate trays to protect, locate, and transport products within and between manufacturing stages. Charpak has a wealth of expertise in providing solutions in a range of materials, including conductive and static dissipative plastics. Charpak's new Class 10,000 clean room can also produce transit trays required by producers in the medical and micro-electronics sectors.



Materials

We can design and make products for a wide variety of purposes, using a wide range of plastic films including the latest developments with Bio-degradable and Bio-compostable materials.

APET / PE, PETG

Crystal Clear or supplied with "Medical" Blue Tint - PETG is both sterilizable and easily weldable.

RPET is a material that uses a high percentage of Post Consumer waste with an ABA layer of Food Grade material to conform with food packaging regulations. All of our Homogenised rPET is produced from superclean PCW which has full FDA/ FSA food approval.

HIGH IMPACT POLYSTYRENE

HIPS Clear, Natural or Pantone Colour Match also as antistatic, conductive for the electronic industry.

PVC, PVC/PE, PVDC

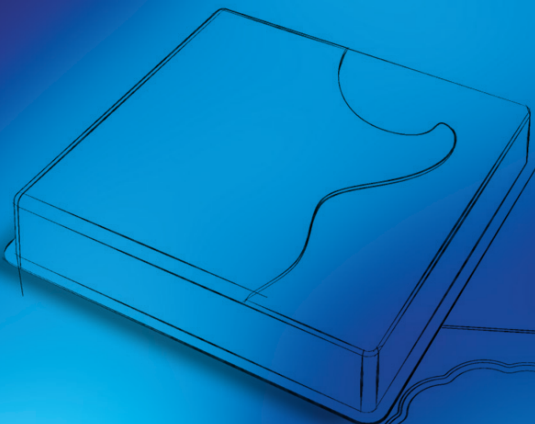
Normal or Barrier Films as Virgin Recycled, Clear, Coloured Metallised Films.

SPECIALISED POLYMERS

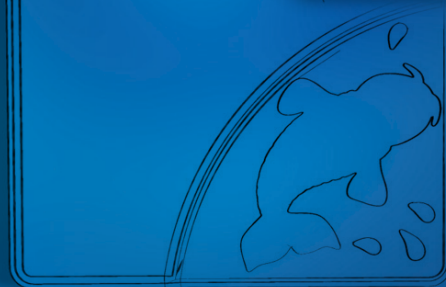
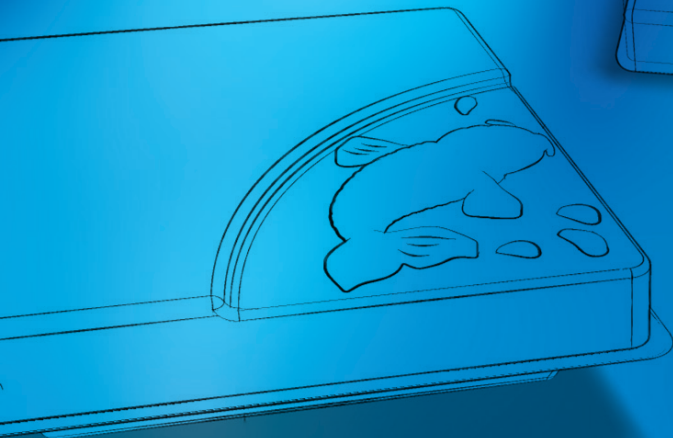
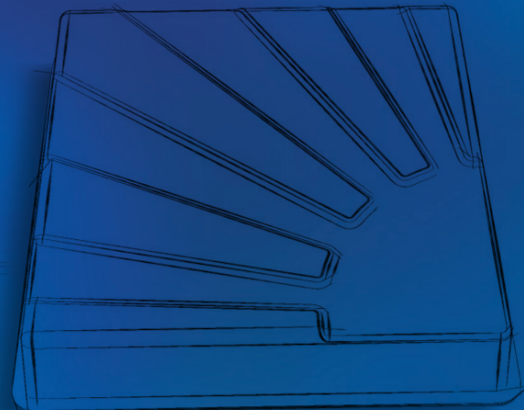
Mono-layer high clarity film, and multi-layer materials are also available which can be used to enhance specific properties such as; gaseous barrier, reduced water vapour transmission, taint avoidance, product stability, improved mechanical characteristics, and chemical resistance.

Specific approved grades can be used for the pharmaceutical and food industries





“Packaging Sells Your Product! - but only if it's done right!”
Contact Charpak to see what we could design for your business.



Design & Development

As a Charpak client you get much more than just Manufacturing – Charpak is a Packaging Solution Provider.

With our 25 years of packaging experience we offer our clients world class designs with full 'Rendered Visualisation' presentations.

We guarantee innovative, modern, world-class quality vacuum forming and packaging solutions. Charpak's "Total Service" approach offers support from those early beginnings and concepts right through to future production runs.

The 6 Design and Development stages outlined here show how we can combine our industry knowledge with the latest Pro-E CAD/CAM technology to enable you to confidently plan your marketing campaign and meet those all important deadlines.

Sustainability

Corporate responsibility is very important to our clients as is the sustainability of packaging and we look to make a positive difference in packaging reduction and sustainability.



CSR

Charpak believes that sustainability is the key to the future of the environment.

Packaging has a vital role to play in all of our lives. It sells the product. It protects the product and perhaps most vitally in an era where we throw away £8,000,000,000 worth of food every year, Plastic packaging if designed correctly also prolongs the shelf life of a product. This allows our clients to put less additives into their products.

Charpak is working with DEFRA, the Government and Trade Bodies to ensure that sustainability works throughout the life of our products. Charpak are one of the few Vacuum forming companies to be actively working in this area.

Sustainability is about optimising the life cycle impact of packaging and minimising the environmental impact of Plastics. Charpak embraced the use of recycled materials over 10 years ago. The vast majority of the plastics Charpak is currently using is a recycled grade of material.

rPET stands for Recycled Polyethylene Terephthalate and is a food-grade recycled PET.

The SPI (Society of Plastic Industries) material code for PET is 1.

rPET's recycled classification comes from a guaranteed minimum content of 50% post-consumer waste. This is directly from the consumer, principally from carbonated drink bottles.

The outer layers are made from Virgin PET and the inner layer is made from the post-consumer waste. This multi-layer structure also gives rPET its certified food contact assurance.

By manufacturing from rPET this ensures that this packaging is not only made from recycled material but can also be recycled after use.

In addition Charpak uses another type of rPET this is 100% Recycled post-consumer waste. This product is super cleaned, homogenised and re-extruded as glass clear rPET This product is FSA/FDA approved for direct food contact.

An interesting little known FACT:- The energy cost of producing a Tonne of recycled rPET is ONE THIRD of the cost of recycling a Tonne of Carton Board. Recycling plastics also saves fossil fuels used as a raw material with the attendant carbon saving.

Biodegradable & Bio-compostible

There are two types generally available Plantic and PLA (Poly Lactic Acid)

Plantic is made from a by-product of the Corn Starch industry. This product is water soluble so can only be used for dry products. It is produced both as a "clear" product (about the same clarity as Polypropylene (PP)) and as a coloured product. It is in use in the UK in some premium chocolate and premium biscuit products.

PLA is again made from a corn starch by-product, however this product is both water and heat resistant. Generally within the UK it is used as a window for a carton rather than used in a vacuum forming.

Both of these products currently do not have a route to the waste stream. Plantic can be sent to landfill and will biodegrade, however there are a lot of food products that have a water content for which Plantic cannot be used.

PLA needs both heat and moisture to biodegrade. The route to the waste stream is through commercial composting. There are currently about 17 such sites around the UK, however there is no way to get PLA Vacuum formings to these centres as there is no kerbside collection by any Local Authority and if PLA is put into general waste it will go to landfill.

For both of these products Charpak believes that there needs to be kerbside collection and delivery to a commercial composting site to make it viable to recommend using them.

Charpak is at the forefront in producing innovative designs to take to the food industry to enhance their offering to consumers using both recycled plastics and end of life usage. This can be either a closed loop recycling scheme or a secondary home use.

Contact Charpak to see what we could design for your business.



We see packaging reduction as something positive for our business. Using recycled and recyclable material is more sustainable for the future both in terms of carbon footprint and for the environment.





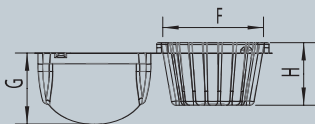
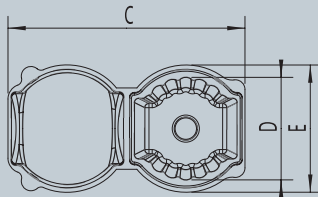
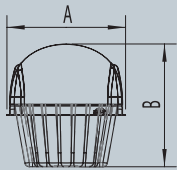
We are unique in offering
sustainable plastic thermoformed packaging.

Bakery catalogue

Single Cupcake Clam	12
Double Cupcake Clam	13
4 Cavity Hinged Cupcake Tray	14
6 Cupcake Lid and Base	16
Single Muffin Clam	18
Single Muffin Clam Large (Collar)	19
Single Flat Top Muffin Clam	20
Standard Danish Clam	21
Single Whoopie/Large Doughnut Clam	22
Double Whoopie/Large Doughnut Clam	23
Single Doughnut Clam	24
Individual Loaf Cake Clam	25
Twin Tart Clam	26
Small Mini Bites Clam	27
Medium Mini Bites Clam	28
Large Mini Bites Clam	29
Square Mini Bites Clam	30
6" Cake Lid & Base	32
7" Cake Lid & Base	34
8" Cake Lid & Base	36
Christmas Tree 12 Cupcake Lid & Base	38
15 Cavity Cupcake Lid & Base - Low	40
15 Cavity Cupcake Lid & Base - High	42
Large Twin Pack Cupcake (with 50/50 split)	44

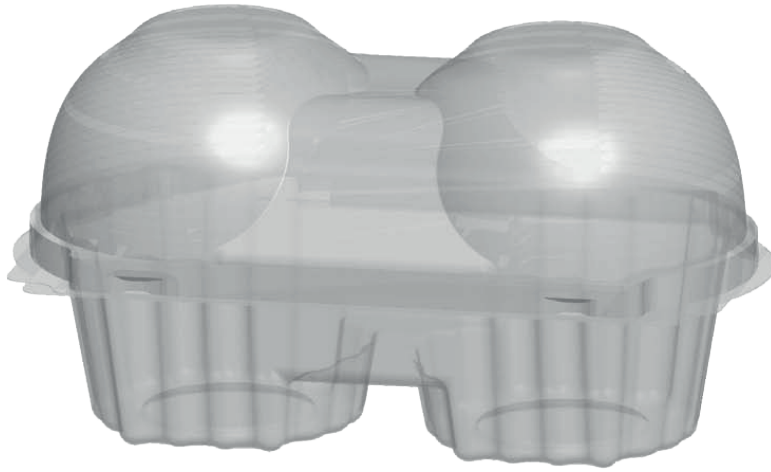


Dimension A	80mm
Dimension B	83mm
Dimension C	160mm
Dimension D	69mm
Dimension E	65mm
Dimension F	48mm
Dimension G	42mm



Single Cupcake Clam

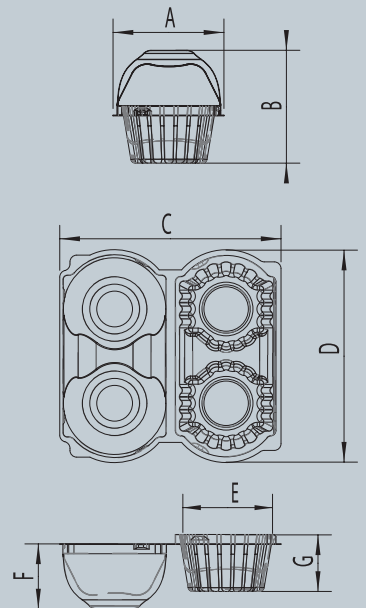
Information		Material Colour	Clear
Model Code	3963	Material	rPET
Minimum Order	10,000	Box Quantity	1050
Lead Time (approx.)	Two Weeks	Boxes per Pallet	20
Material Thickness	350mic	Pallet Quantity	21000



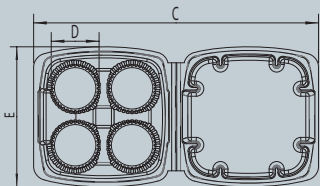
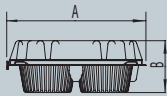
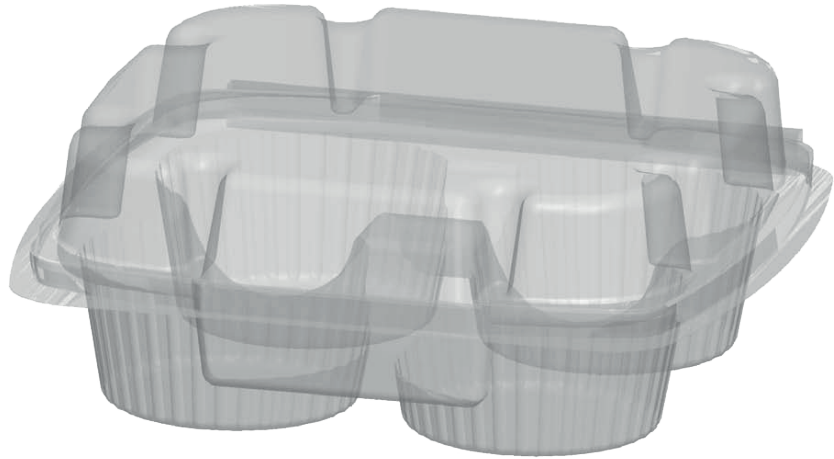
Double Cupcake Clam

Information		Material Colour	Clear
Model Code	4180	Material	rPET
Minimum Order	10,000	Box Quantity	510
Lead Time (approx.)	Two Weeks	Boxes per Pallet	20
Material Thickness	350mic	Pallet Quantity	10200

Dimension A	82mm
Dimension B	83mm
Dimension C	164mm
Dimension D	158mm
Dimension E	65mm
Dimension F	48mm
Dimension G	42mm



Dimension A	162mm
Dimension B	59mm
Dimension C	325mm
Dimension D	52mm
Dimension E	159mm
Dimension F	37mm
Dimension G	28mm

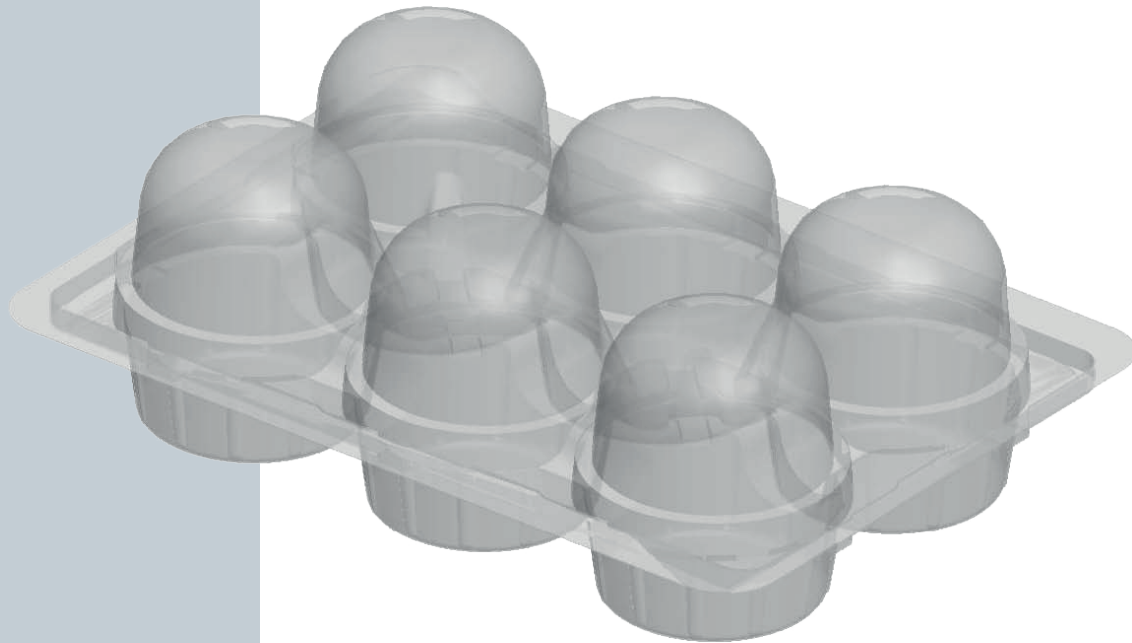


4 Cavity Hinged Cupcake Tray

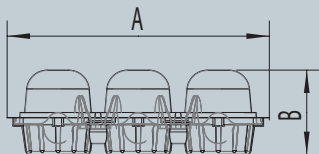
Information		Material Colour	Clear
Model Code	4269	Material	rPET
Minimum Order	10,000	Box Quantity	300
Lead Time (approx.)	Two Weeks	Boxes per Pallet	20
Material Thickness	350mic	Pallet Quantity	6000



25 Years of Providing
Packaging Solutions



Dimension A	229mm
Dimension B	73mm

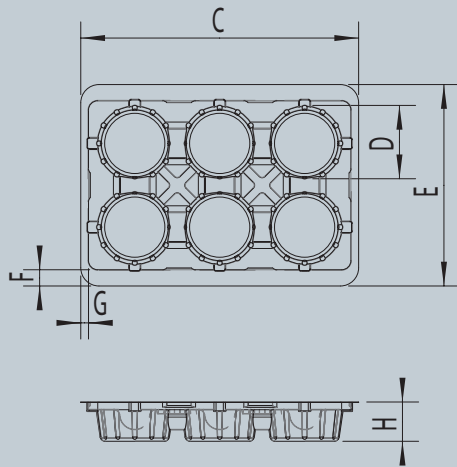


6 Cupcake Lid & Base

Information		Material Colour	Clear
Model Code	Base-3865A, Lid-3865B	Material	rPET
Minimum Order	10,000	Box Quantity	430
Lead Time (approx.)	Two Weeks	Boxes per Pallet	20
Material Thickness	375mic	Pallet Quantity	8600

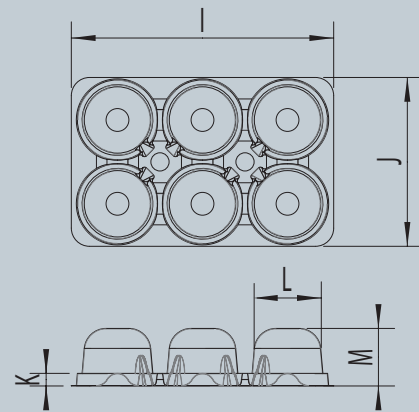
Base

Dimension C	229mm
Dimension D	60mm
Dimension E	166mm
Dimension F	13mm
Dimension G	6mm
Dimension H	32mm

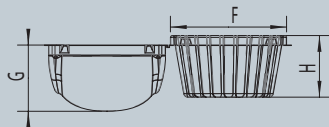
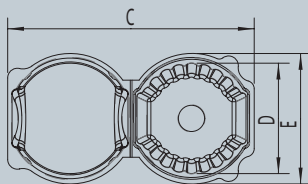
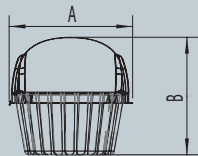


Lid

Dimension I	216mm
Dimension J	139mm
Dimension K	10mm
Dimension L	58mm
Dimension M	47mm



Dimension A	90mm
Dimension B	86mm
Dimension C	181mm
Dimension D	81mm
Dimension E	96mm
Dimension F	85mm
Dimension G	48mm
Dimension H	45mm



Single Muffin Clam

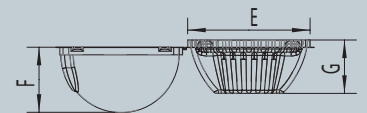
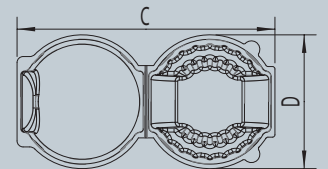
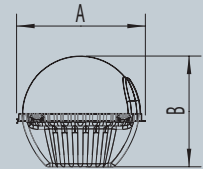
Information		Material Colour	Clear
Model Code	4006	Material	rPET
Minimum Order	10,000	Box Quantity	750
Lead Time (approx.)	Two Weeks	Boxes per Pallet	20
Material Thickness	350mic	Pallet Quantity	15000



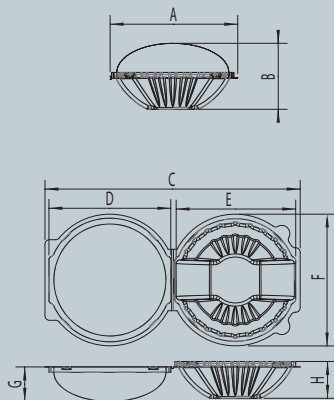
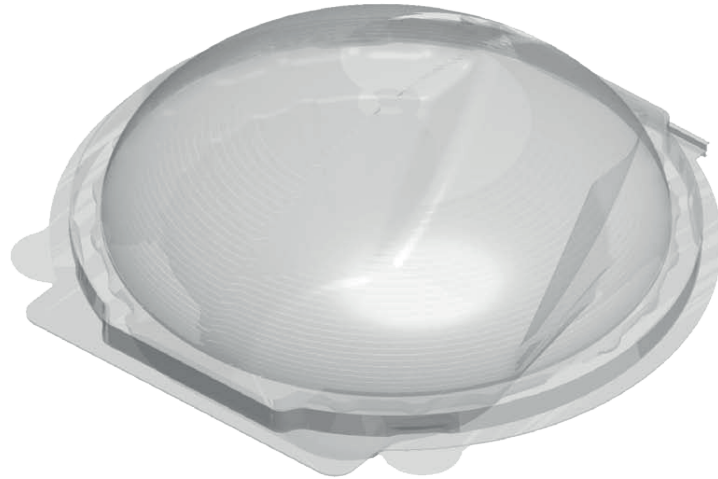
Single Muffin Clam Large (Collar)

Information		Material Colour	Clear
Model Code	4047	Material	rPET
Minimum Order	10,000	Box Quantity	480
Lead Time (approx.)	Two Weeks	Boxes per Pallet	20
Material Thickness	350mic	Pallet Quantity	9600

Dimension A	107mm
Dimension B	92mm
Dimension C	214mm
Dimension D	111mm
Dimension E	101mm
Dimension F	54mm
Dimension G	44mm



Dimension A	119mm
Dimension B	70mm
Dimension C	238mm
Dimension D	113mm
Dimension E	112mm
Dimension F	118mm
Dimension G	35mm
Dimension H	41mm



Single Flat Top Muffin Clam

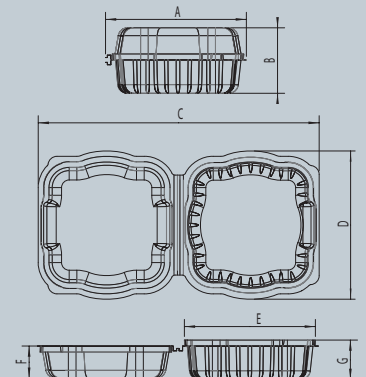
Information		Material Colour	Clear
Model Code	4219	Material	rPET
Minimum Order	10,000	Box Quantity	550
Lead Time (approx.)	Two Weeks	Boxes per Pallet	20
Material Thickness	350mic	Pallet Quantity	11000



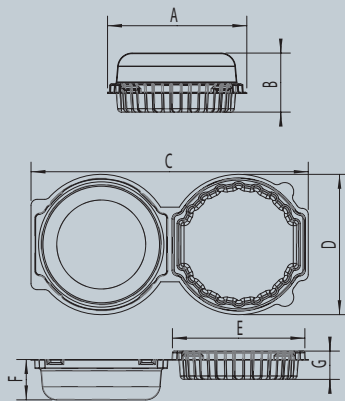
Standard Danish Clam

Information		Material Colour	Clear
Model Code	4317	Material	rPET
Minimum Order	10,000	Box Quantity	760
Lead Time (approx.)	Two Weeks	Boxes per Pallet	20
Material Thickness	275mic	Pallet Quantity	15200

Dimension A	118mm
Dimension B	55mm
Dimension C	236mm
Dimension D	124mm
Dimension E	110mm
Dimension F	27mm
Dimension G	33mm

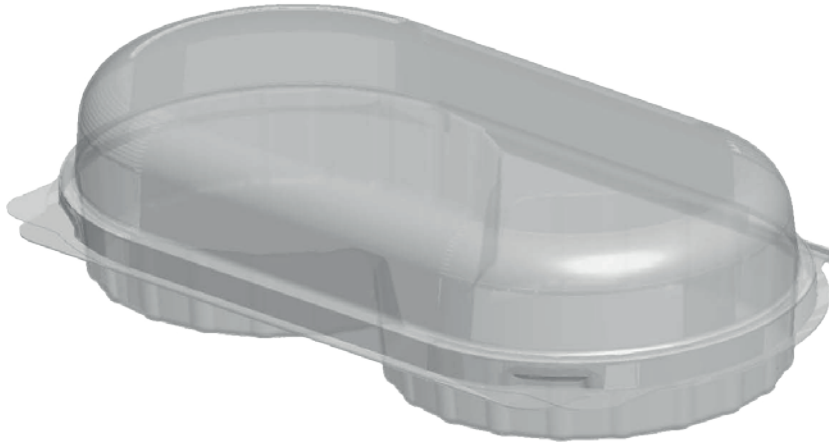


Dimension A	115mm
Dimension B	49mm
Dimension C	230mm
Dimension D	116mm
Dimension E	109mm
Dimension F	33mm
Dimension G	23mm



Single Whoopie/Large Doughnut Clam

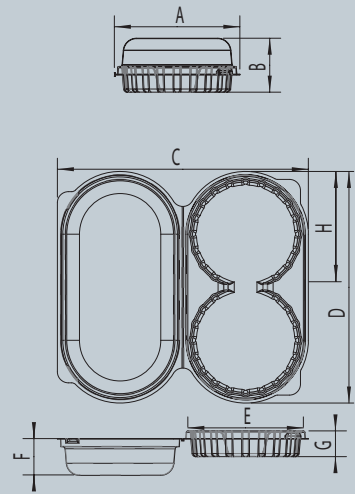
Information		Material Colour	Clear
Model Code	4051	Material	rPET
Minimum Order	10,000	Box Quantity	550
Lead Time (approx.)	Two Weeks	Boxes per Pallet	20
Material Thickness	300mic	Pallet Quantity	11000



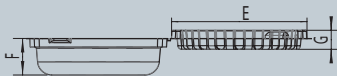
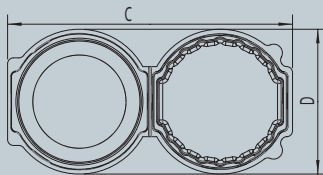
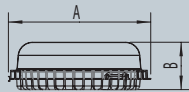
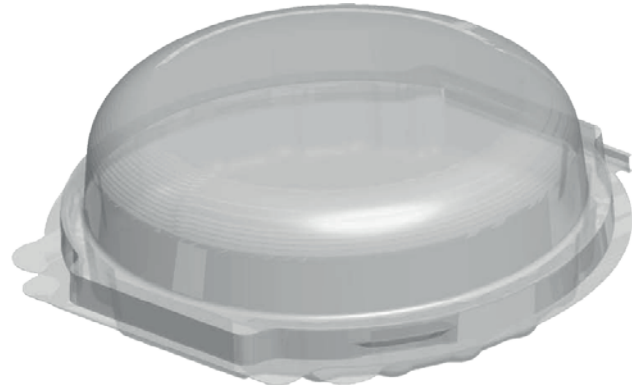
Dimension A	114mm
Dimension B	49mm
Dimension C	228mm
Dimension D	210mm
Dimension E	107mm
Dimension F	33mm
Dimension G	23mm
Dimension H	95mm

Double Whoopie/Double Doughnut Clam

Information		Material Colour	Clear
Model Code	4059	Material	rPET
Minimum Order	10,000	Box Quantity	280
Lead Time (approx.)	Two Weeks	Boxes per Pallet	20
Material Thickness	300mic	Pallet Quantity	5600



Dimension A	122mm
Dimension B	40mm
Dimension C	244mm
Dimension D	124mm
Dimension E	115mm
Dimension F	31mm
Dimension G	16mm



Single Doughnut Clam

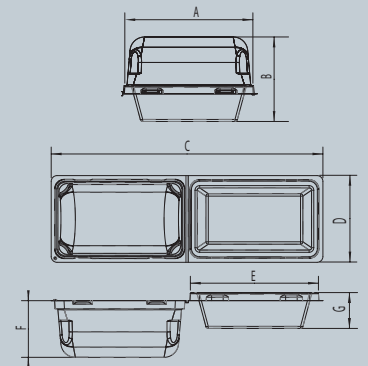
Information		Material Colour	Clear
Model Code	4050	Material	rPET
Minimum Order	10,000	Box Quantity	552
Lead Time (approx.)	Two Weeks	Boxes per Pallet	20
Material Thickness	300mic	Pallet Quantity	11040



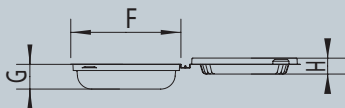
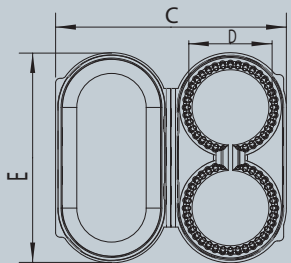
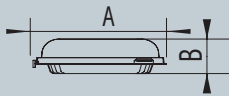
Individual Loaf Cake Clam

Information		Material Colour	Clear
Model Code	4048	Material	rPET
Minimum Order	10,000	Box Quantity	1074
Lead Time (approx.)	Two Weeks	Boxes per Pallet	20
Material Thickness	300mic	Pallet Quantity	21480

Dimension A	118mm
Dimension B	73mm
Dimension C	235mm
Dimension D	75mm
Dimension E	110mm
Dimension F	49mm
Dimension G	31mm

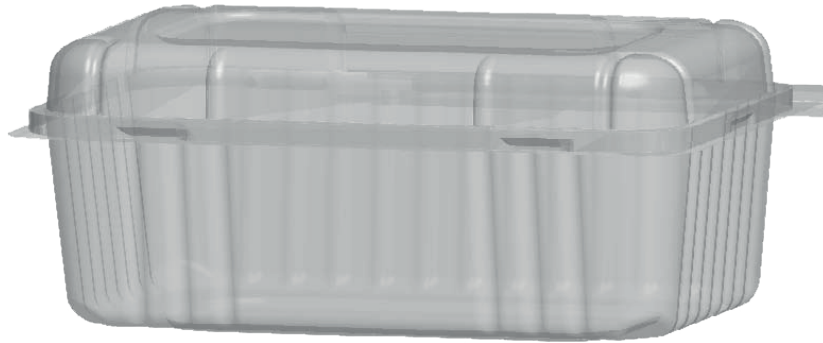


Dimension A	129mm
Dimension B	39mm
Dimension C	258mm
Dimension D	90mm
Dimension E	240mm
Dimension F	119mm
Dimension G	28mm
Dimension H	18mm



Twin Tart Clam

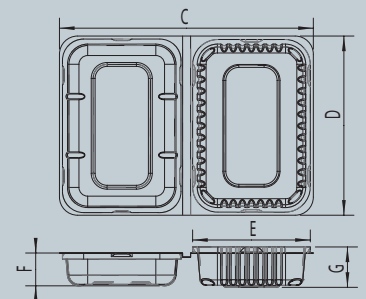
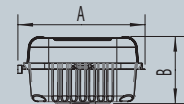
Information		Material Colour	Clear
Model Code	4230	Material	rPET
Minimum Order	10,000	Box Quantity	300
Lead Time (approx.)	Two Weeks	Boxes per Pallet	20
Material Thickness	300mic	Pallet Quantity	6000



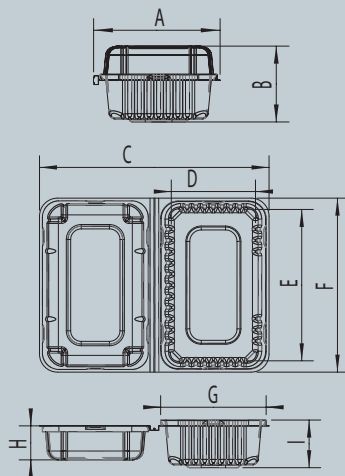
Small Mini Bites Clam

Information		Material Colour	Clear
Model Code	3825	Material	rPET
Minimum Order	10,000	Box Quantity	360
Lead Time (approx.)	Two Weeks	Boxes per Pallet	20
Material Thickness	350mic	Pallet Quantity	7200

Dimension A	120mm
Dimension B	66mm
Dimension C	240mm
Dimension D	180mm
Dimension E	116mm
Dimension F	32mm
Dimension G	40mm

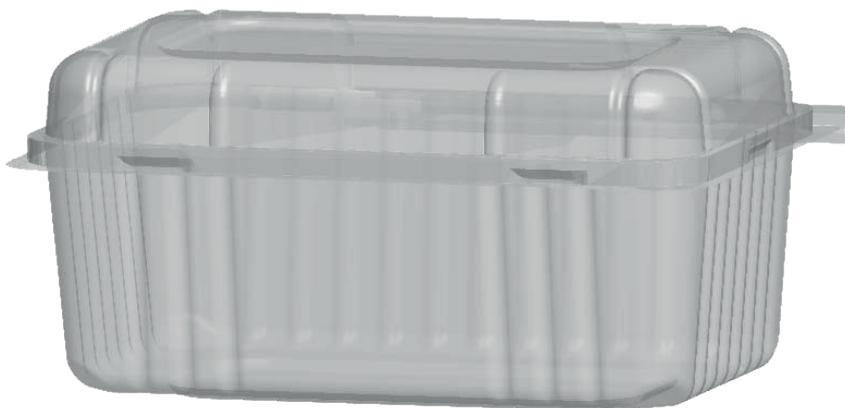


Dimension A	120mm
Dimension B	78mm
Dimension C	240mm
Dimension D	86mm
Dimension E	155mm
Dimension F	180mm
Dimension G	108mm
Dimension H	35mm
Dimension I	49mm



Medium Mini Bites Clam

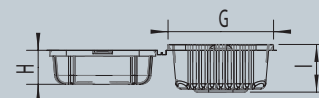
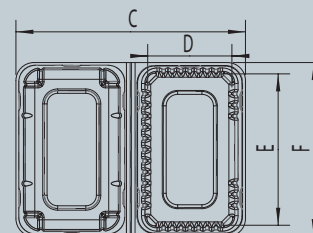
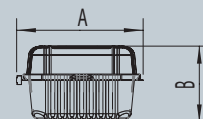
Information		Material Colour	Clear
Model Code	3959	Material	rPET
Minimum Order	10,000	Box Quantity	360
Lead Time (approx.)	Two Weeks	Boxes per Pallet	20
Material Thickness	350mic	Pallet Quantity	7200



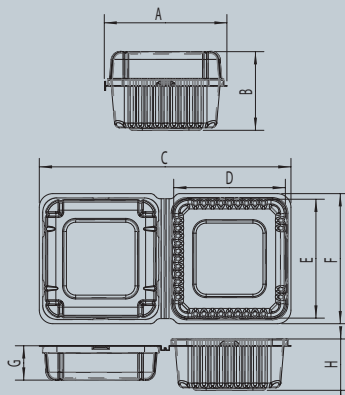
Large Mini Bites Clam

Information		Material Colour	Clear
Model Code	3965	Material	rPET
Minimum Order	10,000	Box Quantity	360
Lead Time (approx.)	Two Weeks	Boxes per Pallet	20
Material Thickness	375mic	Pallet Quantity	7200

Dimension A	120mm
Dimension B	86mm
Dimension C	240mm
Dimension D	99mm
Dimension E	168mm
Dimension F	180mm
Dimension G	108mm
Dimension H	26mm
Dimension I	66mm

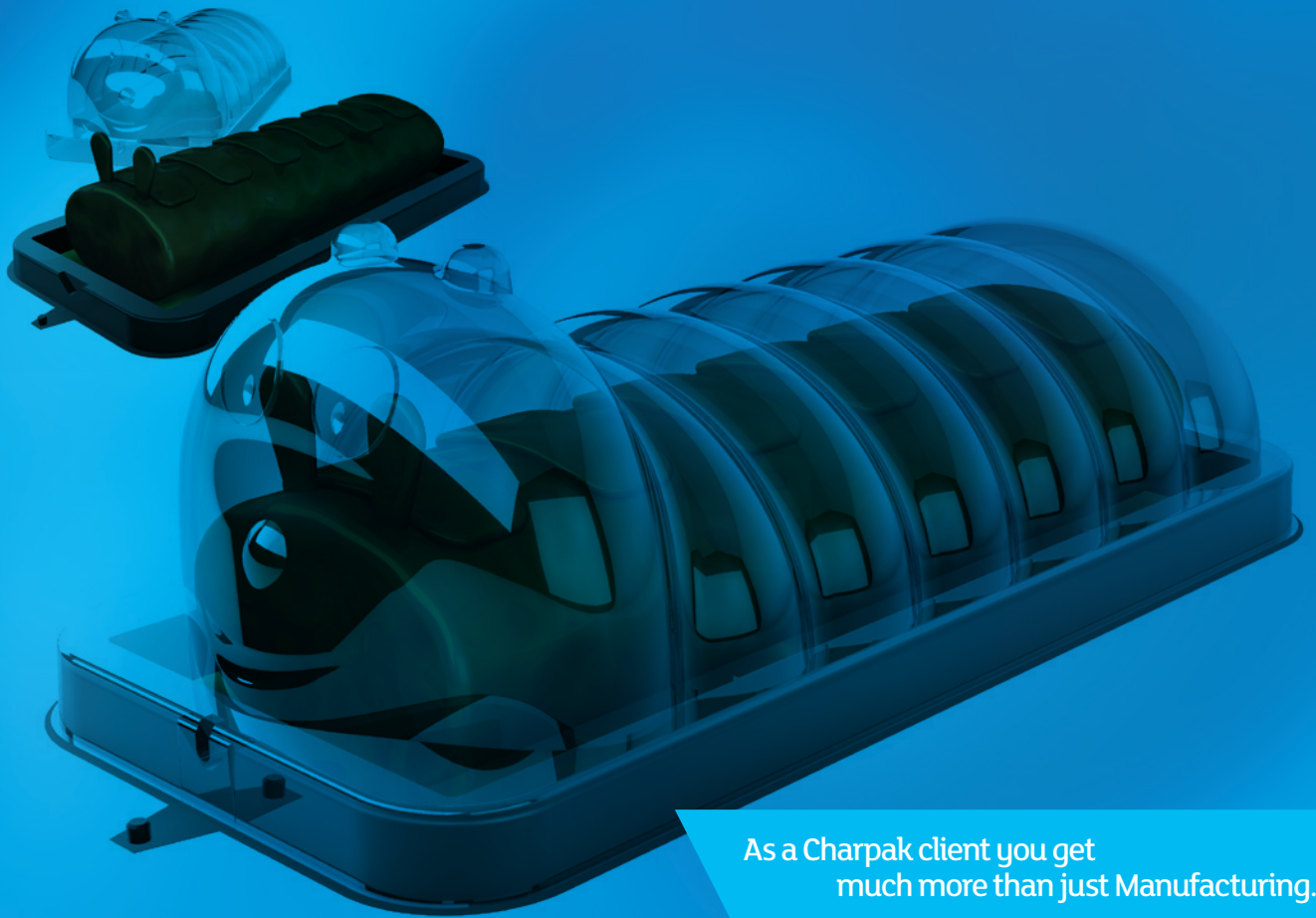


Dimension A	148mm
Dimension B	92mm
Dimension C	296mm
Dimension D	131mm
Dimension E	140mm
Dimension F	153mm
Dimension G	40mm
Dimension H	60mm

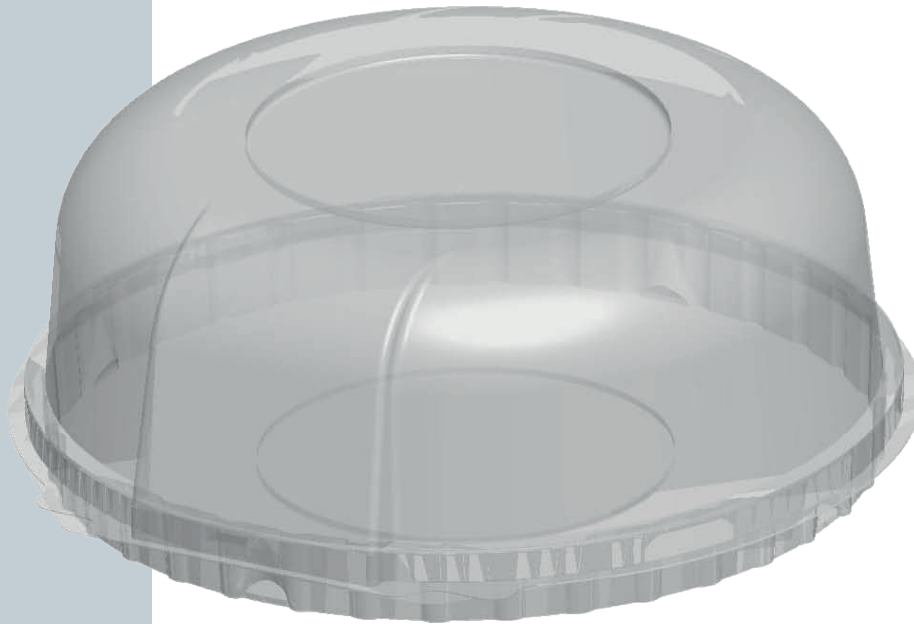


Square Mini Bites Clam

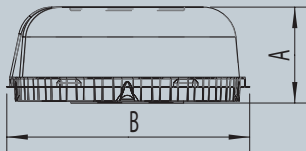
Information		Material Colour	Clear
Model Code	3983	Material	rPET
Minimum Order	10,000	Box Quantity	245
Lead Time (approx.)	Two Weeks	Boxes per Pallet	20
Material Thickness	375mic	Pallet Quantity	4900



As a Charpak client you get
much more than just Manufacturing...



Dimension A	141mm
Dimension B	200mm



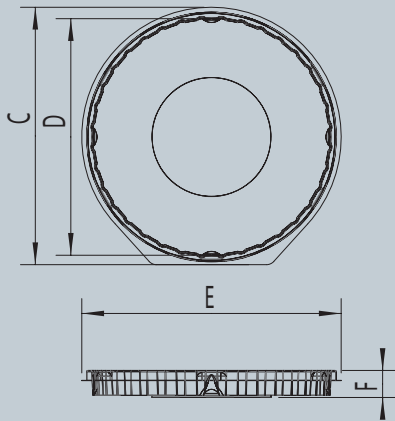
6" Cake Lid & Base

Lid and base to suit 7" cake board

Information		Material Colour	Clear
Model Code	Base-3476, Lid-3793A	Material	rPET
Minimum Order	10,000	Box Quantity	Base-320, Lid-280
Lead Time (approx.)	Two Weeks	Boxes per Pallet	15
Material Thickness	375mic	Pallet Quantity	Base-4800, Lid-4200

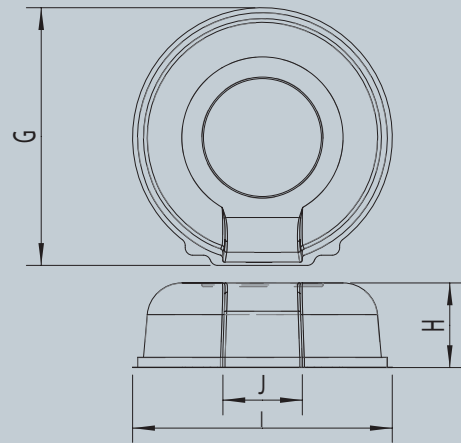
Base

Dimension C	200mm
Dimension D	177mm
Dimension E	200mm
Dimension F	30mm



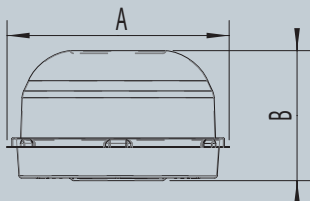
Lid

Dimension G	200mm
Dimension H	110mm
Dimension I	200mm
Dimension J	70mm





Dimension A	253mm
Dimension B	148mm



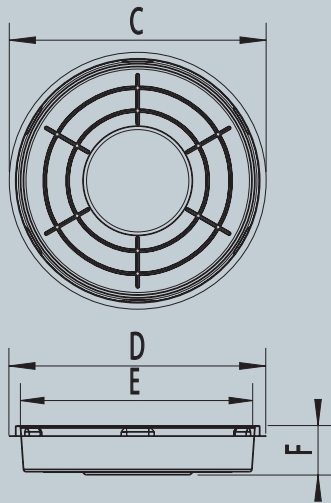
7" Cake Lid & Base

Lid and base to suit 8" cake board

Information		Material Colour	Clear
Model Code	Base-3529, Lid-3528	Material	rPET
Minimum Order	10,000	Box Quantity	Base-120, Lid-100
Lead Time (approx.)	Two Weeks	Boxes per Pallet	20
Material Thickness	500mic	Pallet Quantity	Base-2400, Lid-2000

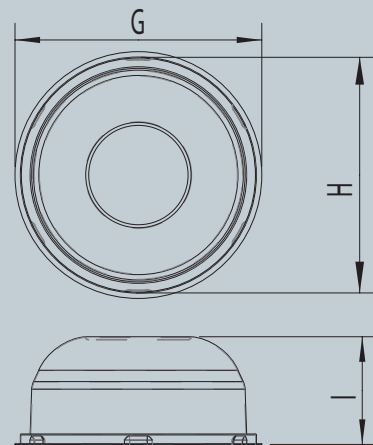
Base

Dimension C	253mm
Dimension D	253mm
Dimension E	241mm
Dimension F	48mm



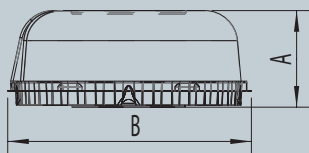
Lid

Dimension G	253mm
Dimension H	241mm
Dimension I	110mm





Dimension A	103mm
Dimension B	260mm



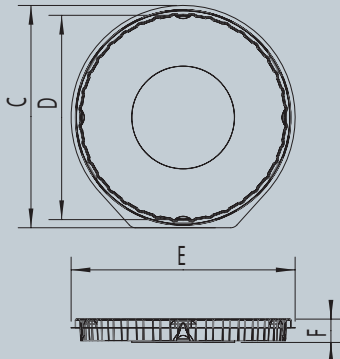
8" Cake Lid & Base

Lid and base to suit 9" cake board

Information		Material Colour	Clear
Model Code	Base-3474, Lid-3473	Material	rPET
Minimum Order	10,000	Box Quantity	Base-140, Lid-120
Lead Time (approx.)	Two Weeks	Boxes per Pallet	15
Material Thickness	Base-375mic, Lid-500mic	Pallet Quantity	Base-2100, Lid-1800

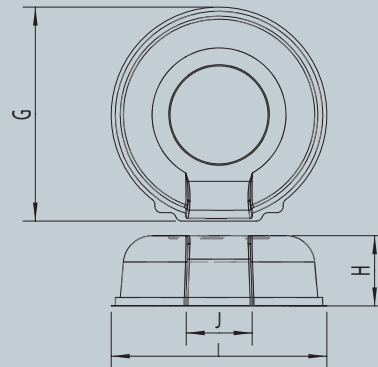
Base

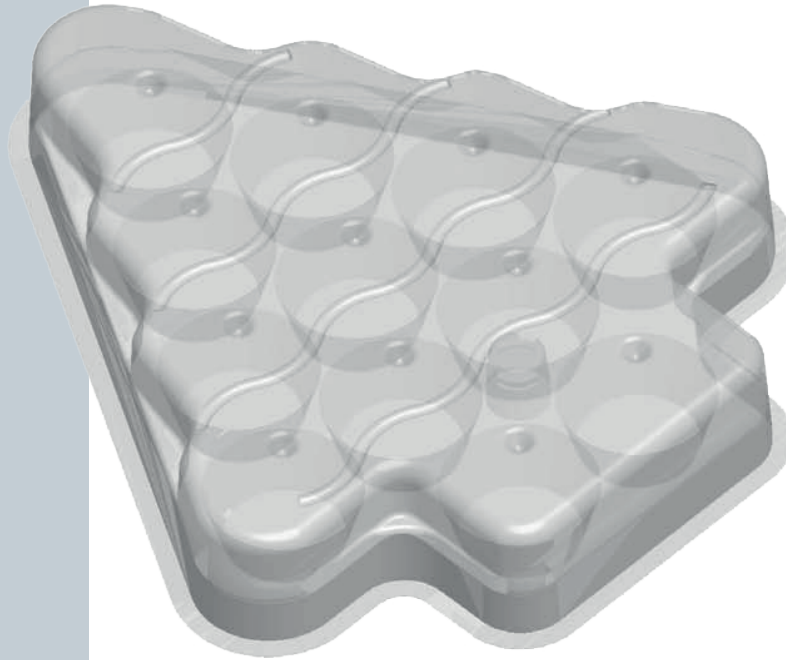
Dimension C	260mm
Dimension D	239mm
Dimension E	262mm
Dimension F	27mm



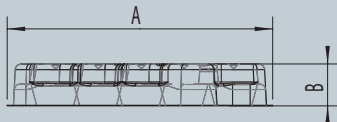
Lid

Dimension G	260mm
Dimension H	85mm
Dimension I	262mm
Dimension J	80mm





Dimension A	332mm
Dimension B	52mm

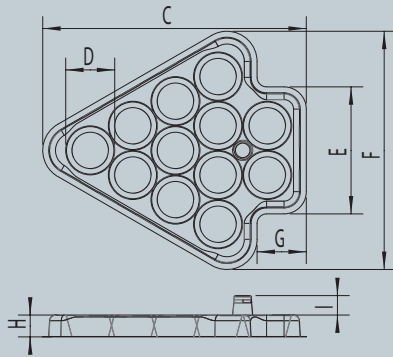


Christmas Tree 12 Cavity Lid & Base

Information		Material Colour	Clear
Model Code	Base-3932B, Lid-3932A	Material	rPET
Minimum Order	10,000	Box Quantity	Base-120, Lid-240
Lead Time (approx.)	Two Weeks	Boxes per Pallet	20
Material Thickness	375mic	Pallet Quantity	Base-2400, Lid-4800

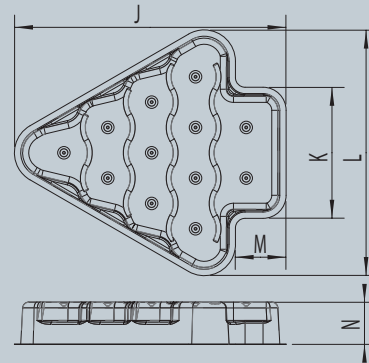
Base

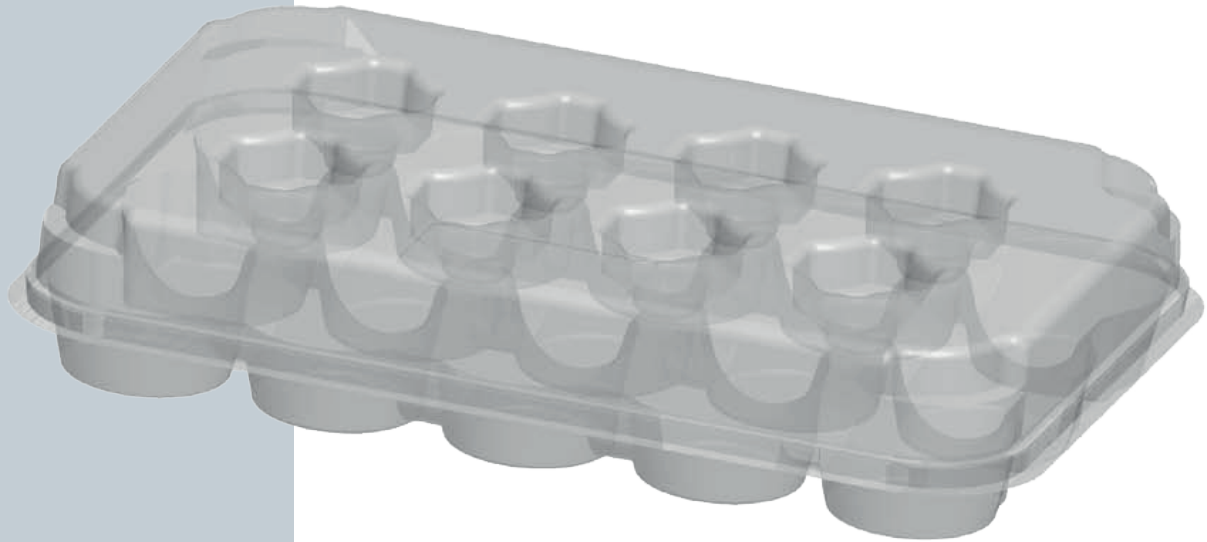
Dimension C	332mm
Dimension D	61mm
Dimension E	160mm
Dimension F	300mm
Dimension G	62mm
Dimension H	27mm
Dimension I	24mm



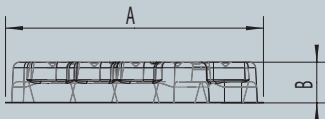
Lid

Dimension J	332mm
Dimension K	160mm
Dimension L	300mm
Dimension M	62mm
Dimension N	51 mm





Dimension A	334mm
Dimension B	53mm

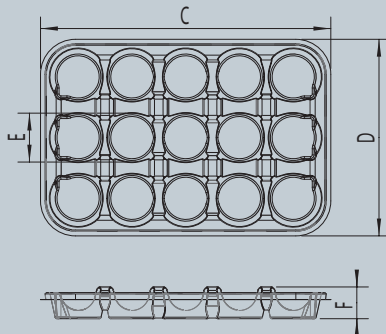


15 Cavity Cupcake Lid & Base - Low

Information		Material Colour	Clear
Model Code	Base-3711, Lid-3712	Material	rPET
Minimum Order	10,000	Box Quantity	Base-160, Lid-180
Lead Time (approx.)	Two Weeks	Boxes per Pallet	20
Material Thickness	375mic	Pallet Quantity	Base-3200, Lid-3600

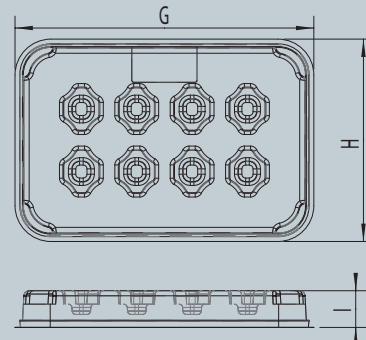
Base

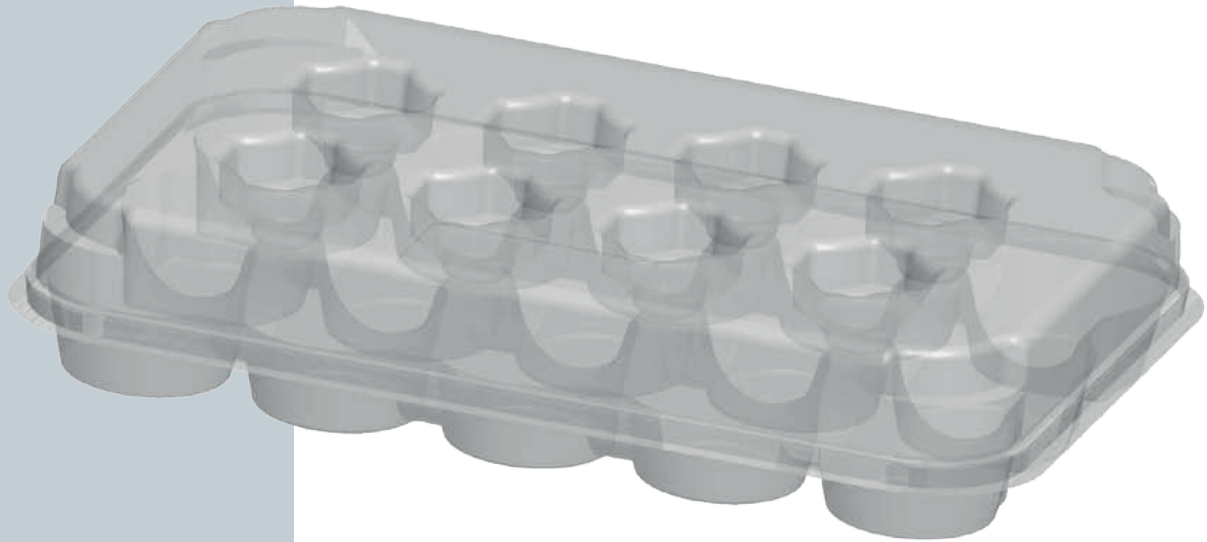
Dimension C	334mm
Dimension D	226mm
Dimension E	56mm
Dimension F	36mm



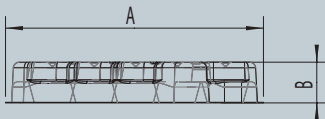
Lid

Dimension G	334mm
Dimension H	226mm
Dimension I	31mm





Dimension A	334mm
Dimension B	63mm

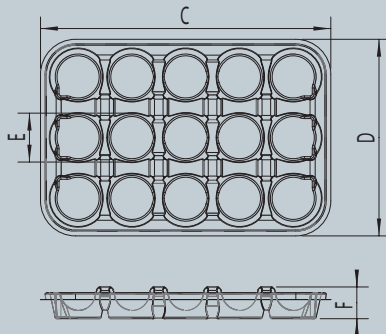


15 Cavity Cupcake Lid & Base - High

Information		Material Colour	Clear
Model Code	Base-3711, Lid-3779	Material	rPET
Minimum Order	10,000	Box Quantity	160
Lead Time (approx.)	Two Weeks	Boxes per Pallet	20
Material Thickness	375mic	Pallet Quantity	3200

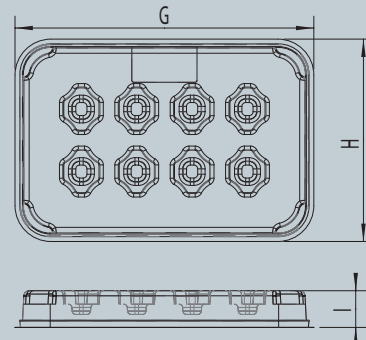
Base

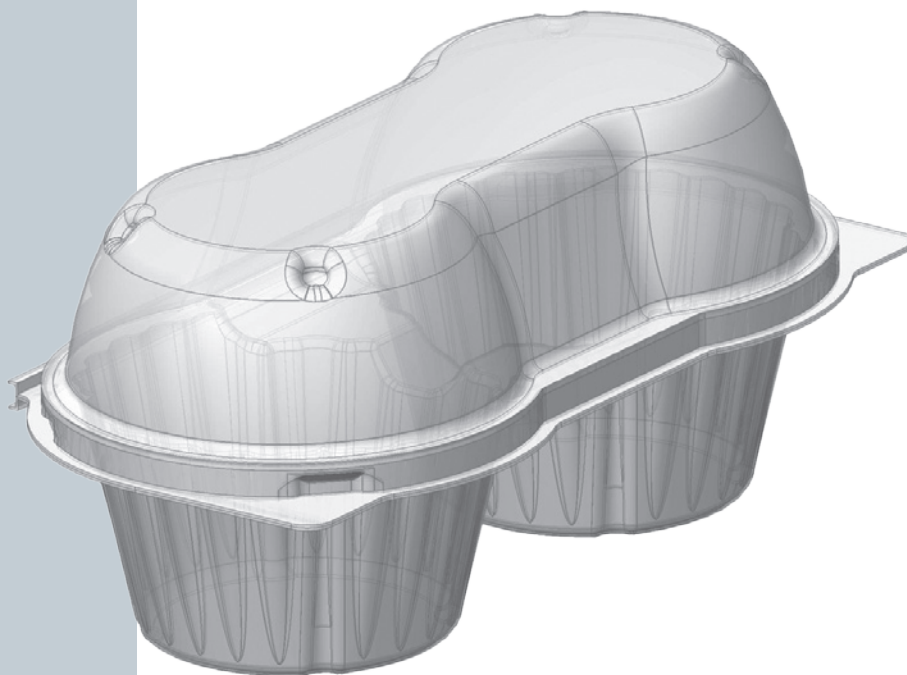
Dimension C	334mm
Dimension D	226mm
Dimension E	56mm
Dimension F	36mm



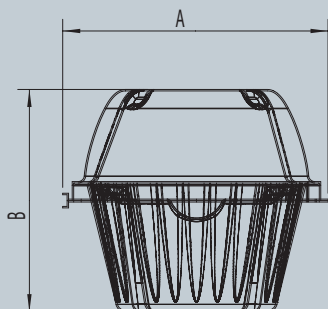
Lid

Dimension G	334mm
Dimension H	226mm
Dimension I	41mm





Dimension A	90.75mm
Dimension B	76.00mm

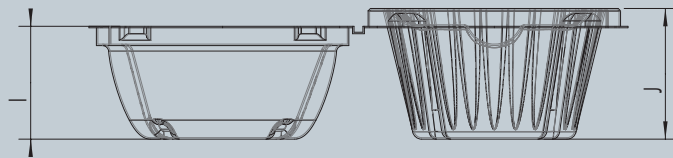
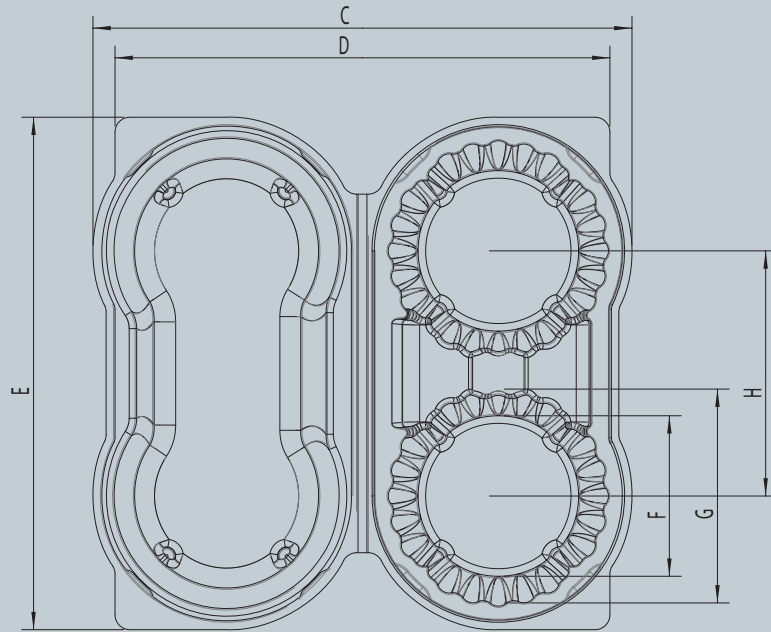


Large Twin Pack Cupcake (with 50/50 split)

Information		Material Colour	Clear
Model Code	4491	Material	rPET
Minimum Order	10,000	Box Quantity	430
Lead Time (approx.)	Two Weeks	Boxes per Pallet	20
Material Thickness	350mic	Pallet Quantity	8600

Dimension C	181.50 mm
Dimension D	166.50mm
Dimension E	172.50mm
Dimension F	54.00mm

Dimension G	72.00mm
Dimension H	82.55mm
Dimension I	38.00mm
Dimension J	42.00mm



Distributors

Charpak has a minimum order quantity of 10k, but if you would like less than this quantity, please use one of our trusted distributors:

Abpac Ltd

Abpac House, Wessex Way
Wincanton Business Park
Wincanton, Somerset
BA9 9RR
Tel: **+44 (0) 1963 32913**
www.abpac.co.uk

Associated Packaging

195 Vale Road
Tonbridge
Kent
TN9 1SU
Tel: **01732 770 777**
www.apac.co.uk

Cakeboxes Direct

8 Chelmertown Avenue
Chelmsford
Essex
CM2 9RE
Tel: **01245 471 115**
www.cakeboxesdirect.com

Cake Craft World

Unit 8 North Downs Business Park
Pilgrims Way (Lime Pit Lane)
Sevenoaks, Kent
TN13 2TL
Tel: **01732 463 573**
www.cakecraftworld.co.uk

Reynards UK Ltd

Greengate
Middleton
Manchester
M24 1RU
Tel: **0161 653 7700**
www.reynards.com

RPC Suppliers Ltd

G30 Atlas Industrial Park
Rye Harbour Road, Rye
East Sussex
TN31 7TE
Tel: **01797 222 295**
www.rjepac.co.uk

The Packaging Centre Ltd

Fox & Geese House, Naas Road
Dublin 22
Tel: **(01) 4508759**
Fax: **(01) 4507567**
Email: **info@thepackagingcentre.ie**
www.thepackagingcentre.ie



CHARPAK LTD

Innovate | Design | Inspire

www.charpak.co.uk