

# range overview



boiler casings



pipe boxing



column casings



interior wall linings



retail interiors



furniture & display

# en casement

## sustainable building solutions

Encasement's approach of providing innovative high quality products at competitive prices, supported by outstanding service, has enabled us to become the fastest growing company in the decorative casings and protection sector.

In addition to our core products, we have continued to develop new additions that meet the growing demand for sustainable building products, including FSC® compliant materials from sustainable sources, which comply with the relevant codes of practice and help improve BREEAM points ratings.

Our product range is now the most comprehensive available and is supported by our high quality manufacturing, logistics, installation and customer services, which combine to deliver a complete solution for architects, specifiers and installers working in all aspects of building design and construction.

We're also continuing to develop new products and services to extend the scope even further and enhance our 'integrated solutions' capabilities.



The mark of  
responsible forestry

# contents



boiler pipe casing  
4



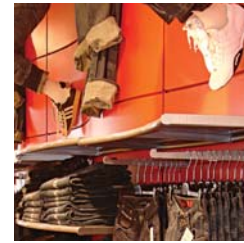
pipe boxing  
5-7



column casing  
8-13



interior wall linings  
14-15



retail interiors  
16-17



furniture & display  
18-19



supply & install  
20

# Boiler Casing

pre-formed plywood  
boiler pipe casings

Almost any boiler installation can be improved by concealing gas, central heating and flue pipe work with our pre-formed and pre-finished boiler pipe work casings.

With a wide range of 'Standard' one-piece casings and 'Custom' two-piece solutions, including jointed and 'factory pre-made' options, they not only provide enormous versatility and choice, but can also be fitted in around half the time of traditional site made alternatives.

Ideal for ongoing social housing refurbishment programmes and new boiler and central heating installations, the casings are self-supporting, so can be free standing or secured using mechanical fixings or mastic adhesives, which allows easy removal for routine servicing or maintenance.

All n-case boiler pipe-work casings are pre-finished in hard wearing white melamine, making them easy to wipe clean with no need to paint.

- \* Two year guarantee
- \* Simple and quick to fit – a uniform finish every time
- \* Ideal for use above or below the boiler
- \* Melamine finish – no need to paint and easy to clean
- \* Easy access for routine inspection, servicing & maintenance



# Riva & Riva 'D'

## pre-formed plywood boxing

n-case Riva pre-formed plywood pipe boxing is a simple, quick and highly cost effective method of concealing horizontal and vertical central heating pipe work, which is why it is used so widely in high volume social housing refurbishment as well as private housing projects.

Capable of being fitted in less than half the time of site made boxing, Riva is available in two casing styles, Riva and Riva 'D', which cover a range of sizes and incorporate a series of dedicated accessories, enabling a consistent, high quality finish to be achieved quickly.

Pre-finished with a hard wearing bonded melamine surface, Riva resists scuffs and scratches as well as being easy to clean. Alongside our standard products Riva is also available manufactured from FSC certified timber.

- \* Fitted in under half the time of site made pipe boxing
- \* Consistent finish on all projects
- \* Pre-finished with melamine - no painting required
- \* Available manufactured from FSC certified timber
- \* 2 year guarantee as standard
- \* Easy to remove for routine inspection, servicing & maintenance
- \* Range of dedicated accessories





# Versa 5 & Versa 8

## pre-formed plywood boxing

n-case Versa pipe boxing provides a truly versatile and adaptable solution for concealing pipe work in both domestic and commercial applications from bathrooms and kitchens to major heating installations.

Manufactured in two material thicknesses – 5mm and 8mm – to meet a diverse range of specifications and project requirements, Versa 5 and Versa 8 boxing is available in a choice of standard lengths and is supported by a range of dedicated accessories to provide an integrated finish to any project.

Suitable for both vertical and horizontal installation, Versa one piece pre-formed pipe boxing solutions are pre-finished with a hard wearing bonded melamine surface, which is durable and easy to clean, making it ideal for a broad range of applications, particularly where hygiene is a key consideration.

The Versa pipe boxing range carries a two-year guarantee and is available manufactured from FSC certified timber alongside our standard product range to aid compliance with sustainable building codes and timber procurement policies.

- \* Fitted in under half the time of site made pipe boxing
- \* Consistent finish on all projects
- \* Pre-finished with melamine - no painting required
- \* Available manufactured from FSC certified timber
- \* 2 year guarantee as standard
- \* Easy to remove for routine inspection, servicing & maintenance
- \* Range of dedicated accessories available
- \* Designed for horizontal and vertical applications



# Versa 8D & Arma

## pipe casing and protection

Where projects require internal or external pipework to be concealed with decorative, durable or protective casing, then our Versa 8D, Dura and Arma products provide a comprehensive and versatile solution.

### **Versa 8D – pipe boxing**

Versa 8D pipe boxing provides the ideal solution for concealing interior vertical pipe work and building services. Manufactured from 8mm thick pre-formed plywood, it is available in 'Standard' one-piece or custom two-piece styles and provides a robust and attractive finish. Like all our plywood boxing, Versa 8D is also available manufactured from FSC certified timber in addition to our standard material.

### **Arma – external pipe protection**

Arma metal casing has been developed for use in a range of projects, to protect external pipework, cabling and other building services from theft, accidental damage and vandalism.

The theft of copper pipes and the associated dangers of cutting through external gas pipework present significant safety risks as well as disruption and the high cost of remedial work. Arma provides effective protection and a deterrent for projects where maximum protection is needed.





# Circa & Quadra

## pre-formed plywood column casings

n-case Circa and Quadra column casings are manufactured using 8mm pre-formed plywood, which allows a high degree of design flexibility and enables circular, semi-circular, square, rectangular and specialised extended circle styles to be produced to meet a broad range of specifications and applications.

This design versatility is also carried through to the choice of finishes available. Whether the project requires a plain finish for onsite painting, standard white melamine or any of our virtually limitless choice of laminated finishes or real wood veneers, we've got it covered.

Circa and Quadra provide a highly cost effective and versatile column casing solution, which is why they are already widely used in a diverse range of sectors from hotels, leisure and commercial to public buildings, retail and education including schools, colleges, universities and academies.

Next day delivery is available on all 'ex-stock' Circa column casings to ensure we can provide a quick turnaround for projects with tight timescales.

- \* Cost effective method of covering structural columns
- \* Standard column casing range available in 3m lengths
- \* Ex-stock - next working day delivery
- \* Choice of plain, laminated and veneer finishes
- \* Quick and easy to install
- \* Single fix dry trade solution









# Forma

## metal column casings

The n-case Forma range of metal column casings includes both aluminium and stainless steel to provide the widest practical column casing choice for use in both interior and exterior environments.

With the wide range of finishes, perforation patterns and column casing shapes that are available, n-case metal casings provide a highly flexible solution that meets both the aesthetic and functional elements of any column casing project.

It is this versatility, coupled with the broad scope of shapes, sizes and finishes available, that has made Forma one of the most frequently specified column casing solutions. As a result, they are used in a diverse range of applications and sectors including commercial, retail, education, leisure, public buildings, hotels and sports stadia.

In addition to the 'standard' sizes within the Forma range, our custom solutions allow designers and specifiers the complete freedom to explore new design possibilities, while enabling them to also have total control of the materials, specifications, forms and finishes to provide the ultimate in flexibility and choice.

- \* Wide range of standard and custom shapes & sizes
- \* Suitable for interior and exterior applications
- \* Exceptional choice of finishes for design flexibility
- \* Up to 4 metres height in a single length
- \* Easily stacked to reach extended heights









# Polyma GRP, Gypra GRG & Metza

complete freedom with total control

The n-case column casing range is the most comprehensive available and extends well beyond our popular Circa, Quadra and Forma ranges to provide designers, specifiers and contractors with an unrivalled choice of materials, styles and finishes as well as products for specialised applications.

## **Polyma GRP column casings**

n-case Polyma is manufactured from glass reinforced polymer making it suitable for both internal and external applications. A wide range of standard circular column casing sizes are available, but as Polyma casings are produced from a mould, this allows a high degree of versatility, enabling ellipses and other bespoke shapes to be specified as well as custom sizes and surface finishes to meet the needs of specific projects.

## **Gypra GRG column casings**

Manufactured from glass reinforced gypsum, Gypra casings are designed solely for interior use and provide an excellent blend of easy installation, strength and versatility as well as fire resistance. As Gypra casings are moulded, they enable custom shapes and sizes to be produced easily and when a smooth finish is required for on-site painting, Gypra casings provide a perfect solution, whether they are part of our standard range or custom made to meet individual project requirements.

## **Metza – mezzanine floor column casings**

Completing the product line up is our Metza fire rated column casing system. Designed specifically for use on mezzanine floor support columns, Metza provides up to 3 hours fire protection.







# Vecta

## interior wall linings and detailing

The Vecta range is designed as a fully integrated and versatile interior finishing system that includes high quality wall linings and lift lobby linings as well as reveals, soffits, bulkheads and skirting to provide the finishing touch to any project.

One of Vecta range's key strengths is its ability to meet an immense array of interior design specifications in terms of the colour, durability and sheer choice of panel dimensions available.

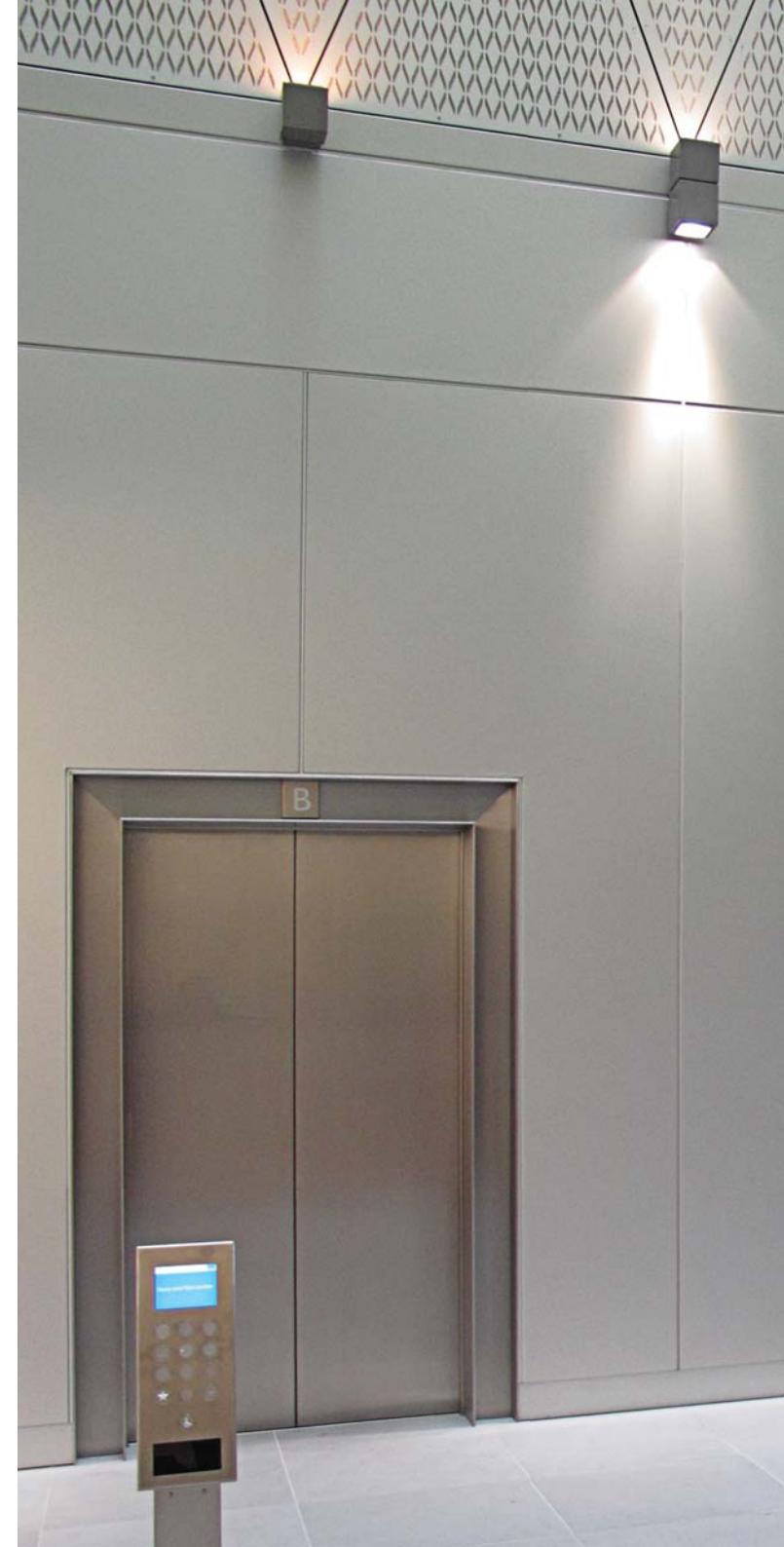
As all Vecta installations are created, produced and installed to meet the specific requirements of every individual project, this ensures that the layout and sizes of the panels enhance the overall interior design. To achieve this level of detail, our experienced surveyors undertake comprehensive site surveys, which enable us to plan the installation precisely.

Vecta can be specified in a range of materials and finishes including natural, brushed, anodised or PPC coated aluminium and stainless steel, as well as compact laminates, which can be finished in a wide palette of colours or incorporate custom images and graphics for unique interior design solutions.

Already used in a wide range of projects and sectors, including education, health, commercial, hotel & leisure, as well as retail, public buildings rail and airports, Vecta provides architects and contractors with a creative, versatile and stylish system that covers both compact laminate and decorative metal solutions, including brushed aluminium, stainless steel and Rimex textured finishes.

We also offer a supply and install service, enabling us to maintain complete control and provide expert installation on all Vecta projects.

- \* Stylish, practical and aesthetic solutions
- \* Integrated system includes wall and lift lobby linings, reveals, soffits bulkheads & skirtings
- \* Design, layout & sizes are tailored to the requirements of each individual project
- \* Wide range of materials and finishes
- \* Comprehensive range to meet diverse specifications
- \* Panels can be formed to follow wall contours
- \* Versatile and adaptable to meet any wall lining specification
- \* Complete supply & install packages available









# Venda

## retail interiors & display

Venda is a modular retail interior cladding system that not only helps enhance the look and feel of a store, but also provides stylish, flexible and practical product display solutions as an integral part of this highly versatile and easy to install package.

Using a lightweight and rigid metal framework, the Venda system can be located against any internal wall or as a free-standing, self-supporting structure to provide a stable platform on to which the decorative fascia panels simply snap and click into place using a patented solution, enabling both curved profile and flat display solutions to be created.

This simple system allows the panels to be unclipped and changed easily and they can be produced in an incredibly diverse range of different colours, finishes and materials, including wood, powder coated metal, laminated plywood and padded leather.

As Venda is completely modular, it incorporates wall panels, shelving and a range of stylish product display solutions designed for retail environments. It is also fully adaptable to meet any specific shop layout and requirements, including curved profiles as well as flat cladding panel designs that can be produced in a choice of materials and finishes.

Flexible display lighting options and integral cable management also form part of the system alongside flush shelving options, recessed display boxes and a range of other modular accessories to give maximum choice and functionality in retail design.

- \* Curved profile and flat display solutions for maximum versatility
- \* Modular system provides immense design flexibility
- \* Strong and lightweight frame is quick and easy to fix
- \* Easily conceals building services
- \* Patented snap panel system is easy to fit
- \* Easy access for routine building services maintenance
- \* Huge range of colours, finish options and materials
- \* Dedicated retail interior solution with integrated display and shelving









# Vista

## contemporary furniture, storage & display

Vista was conceived as an innovative solution that provides stylish furniture, storage and display solutions that can be readily adapted to meet the unique interior requirements found in hotels, hospitals, public buildings and retail, as well as a range of other sectors.

Manufactured from durable pre-formed plywood, Vista not only incorporates soft curves within its design, but also offers an almost unrivalled palette of finish options, including plain colours, metallics, wood veneers and laminates to provide a versatile combination of style and durability.

By blending contemporary design with advanced manufacturing, durable materials and a wide choice of finishes, Vista can be specified to meet most project requirements, whether the need is for a new hotel room concept, stylish retail displays or versatile storage and shelving.

Vista is perfectly suited to new build applications as well as refurbishment projects and building re-purposing, where the scope of the range can be defined precisely to meet the specific project requirements.

A key benefit of Vista is that it can be produced to match precise project dimensions, so that the fit and finish to any contract interior is to the highest standards, ensuring the integrity of the project is maintained and enhanced.

Vista can be used as a complete integrated package or selected elements, such as bathroom furniture, storage and display shelving can be used to accent specific rooms within an overall design scheme.

A similar level of versatility is available for the retail sector, where 'standard' Vista display solutions can be mixed with bespoke Vista desks, shelving and product display cabinets to create unique sales environments.

- \* Highly versatile
- \* Wide range of colours and finish options
- \* Standard products and bespoke joinery solutions
- \* Dedicated to commercial, retail and contract interiors







# Supply & Install

## a fully installed solution

Alongside our wide range of products and casing solutions, we also offer an optional supply and install service enabling us to maintain complete control over the project.

This service can be particularly useful for complex or larger projects or where the installation part of a particular contract falls outside of existing arrangements with specialist contractors.

Our installation packages can be undertaken as a complete 'stand alone' solution, requiring minimal intervention or co-ordination by the main contractor and can be delivered within a flexible schedule of work to co-ordinate with main contractor's programme and handovers.

All our site engineers and installation technicians are not only highly trained and experienced, but also comply with the necessary on-site safety and construction industry standards for risk assessment and skills certification.

As with all aspects of Encasement's business, we maintain high standards, professional working practices and competitive pricing. So if you require a supply only or supply and install service from Encasement, we've got it covered.

- \* Flexible working to co-ordinate with main contractor's programme
- \* Installation can be undertaken as a 'stand alone' package
- \* Internal Quality and ITP systems to maintain high standards
- \* All installation personnel are CSCS compliant
- \* In house H & S consultant oversees safety requirements
- \* Trained and skilled installers with more than 30 years of experience
- \* Risk Assessments and Method Statements provided
- \* Full O & M manual provided upon completion





Encasement Ltd  
Peartree Business Centre  
Enterprise Way  
Bretton  
Peterborough  
Cambridgeshire  
PE3 8YQ  
t: +44(0)1733 266 889  
f: +44(0)1733 268 999  
[www.encasement.co.uk](http://www.encasement.co.uk)

