

# Roller Barrier - the Non Aggressive Solution!



Children are naturally adventurous yet may lack necessary judgement, and risk serious injury by attempting to negotiate a spiked anti-climb barrier, which they could fall on and impale themselves.

Which is why many local authorities now specify the Non Aggressive Roller Barrier system for protecting schools, public buildings, parks and gardens, etc.

## Versatile, effective and no risk of impalement!

Hardly surprising therefore that Roller Barrier is not only very popular with schools, but is also rapidly becoming the anti climb system of choice at mental health care facilities, drug rehabilitation centres and other locations where people present may not fully appreciate the risks involved in trying to climb over a spiked barrier.

The main picture above shows a typical installation to prevent children, vandals or intruders, from climbing on to a flat roof.

Pictured right, is a double row Roller Barrier installation above low walls and gates around an adult learning facility. The installation instantly stopped drug users climbing into the locked grounds overnight, which eliminated the need for the daily clean-up of needles and other drugs detritus.





## A few examples of Roller Barrier installations:



These school gates may be 3 metres high, but that did not stop children from climbing into the locked grounds at weekends and evenings,

...that is, until Roller Barrier was fitted to the top rail.



This Young Offenders centre in Canada found their initial Roller Barrier system so effective that they came back for more, and also actively recommended it to others. ...more recently, UK prisons have discovered and use it!



Installed to stop special needs patients from scaling fences and gates at this facility...

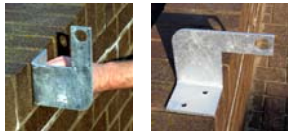
Roller Barrier was chosen for its 'non-threatening' looks and its proven performance in similar environments



This childrens centre and play area was regularly vandalised until Roller Barrier was installed;

- along the fence / gate top
- on the canopy supports
- and around the flat roof.

## The main components of the system;



The Universal Bracket shown above left: 'face fix' shown above right: 'top fix'

The versatile Universal Bracket can be used to 'face fix' or 'top fix' the system, while other stock and bespoke brackets are available to meet virtually any installation need.

All Brackets are manufactured from 6mm steel, with a galvanised finish (durable paint finish also available)



Roller Barrier Cups are available in Black and Green from stock (other colours available to special order)

The unbreakable, flame retardant cups are produced from recycled polycarbonate. They are designed to be too big to allow a hand hold and rotate independently to form an unstable and ungrippable barrier.

Fixing brackets installed at 2 metre intervals support the central shaft



The central shaft is manufactured from extruded aluminium (BS6082) and is supplied in 2 metre lengths



The joining spigot provides a quick and easy way to join shaft lengths together for longer runs



**Universal Bracket**

Prod Ref: PS RBRKTSU

o/a Height: 130mm  
o/a Length: 180mm  
Fixing Holes: 2 x 10mm



**Extended Universal Bracket**

Prod Ref: PS RBRKTSUE

o/a Height: 220mm  
o/a Length: 180mm  
Fixing Holes: 2 x 10mm



**Straight Twist Bracket**

Prod Ref: PS RBRKTST

o/a Height: 530mm  
below twist: 310mm  
Fixing Holes: 2 x 10mm



**Cranked Bracket**

Prod Ref: PS RBRKTSC

o/a Height: 500mm  
below twist: 310mm  
Fixing Holes: 3 x 10mm  
(clearance from Cup to wall = 80mm)



**Extended Fascia Bracket**

Prod Ref: PS RBRKTFE

o/a Height: 130mm  
o/a Length: 180mm  
Fixing Holes: 2 x 10mm



**Fence Top / Fascia Bracket**

Prod Ref: PS RBRKTFS

o/a Height: 130mm  
o/a Length: 120mm  
Fixing Holes: 2 x 10mm



**Straight Bracket**

Prod Ref: PS RBRKTSB

o/a Height: 250mm  
o/a Length: n/a  
Fixing Holes: 2 x 10mm



**Alley Bracket**

Prod Ref: PS RBRKTAB

Manufactured from 50mm box section (bolt & shear nut incl.)  
Fixing Holes: 2 x 10mm

**PLEASE NOTE:** "Warning Signs" must be displayed where this product is installed.

Check out our range of "Anti Climb" signs on our website, or call for details: 01273 475500



Why not make your life easier?

Our range of **Fast-Fix masonry fixings** will speed up you installation, or choose from our range of **Security Fastenings** for added security

