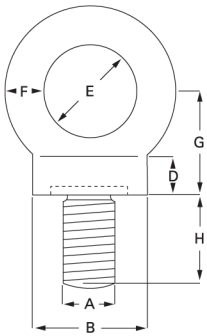


Drop Forged Collared Eyebolts - Whitworth/UNC Thread



- Higher tensile steel.
- Self colour finish.
- Electro galvanised finish available on request.
- Tested and certified.

UNC code	Whitworth code	Vertical SWL Tons	A inches	B mm	D mm	E mm	F mm	G mm	H mm	Weight Kgs/each
L0003	L0201	0.25	3/8	22	7	15	9	20	17	0.06
L0004	L0202	0.50	1/2	29	10	20	12	26	22	0.07
L0005	L0203	0.90	5/8	36	12	24	14	32	28	0.14
L0006	L0204	1.40	3/4	45	15	30	18	40	33	0.28
L0007	L0205	2.00	7/8	52	17	35	21	46	39	0.60
L0008	L0206	2.75	1	58	20	39	23	52	44	1.10
L0010	L0207	3.50	1 1/8	64	21	42	25	57	50	1.60

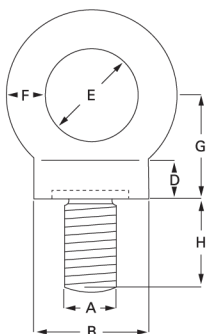


Drop Forged Collared Eyebolts - Metric Thread



- Higher tensile steel.
- Self colour finish.
- Electro galvanised finish available on request.
- Tested and certified.

Code	Vertical SWL Tons	A mm	B mm	D mm	E mm	F mm	G mm	H mm	Weight Kgs/each
L0300	0.15	8	22	7	15	9	20	18	0.06
L0301	0.25	10	22	7	15	9	20	18	0.06
L0302	0.40	12	22	7	15	9	20	18	0.06
L0303	0.50	14	29	10	20	12	26	23	0.15
L0304	0.80	16	29	10	20	12	26	23	0.15
L0305	1.00	18	36	12	24	14	32	28	0.27
L0306	1.60	20	40	14	27	16	36	32	0.3
L0307	1.60	22	45	15	30	18	40	35	0.54
L0308	2.50	24	52	17	35	21	46	40	0.85
L0309	2.50	27	58	20	39	23	52	46	1.13
L0310	4.00	30	65	22	44	26	58	51	1.62
L03011	4.00	33	72	24	48	28	64	56	2.37
L0312	6.30	36	81	27	54	32	72	63	3.12



NEVER EXCEED MAXIMUM CAPACITY

Ensure operator follows safe use instruction guidelines