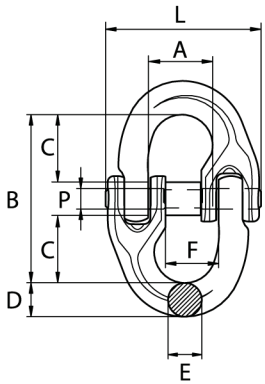


Grade 8 Component Connectors



- Meets the performance requirements of BS-EN 1677-1.
- Suitable for use with Grade 8 Chains.
- Painted finish.
- Alloy steel, quenched and tempered.
- Designed for easy attaching of hooks and master links to other Grade 8 Chains and fittings.
- Proof load tested to 2.5 times the W.L.L.
- Minimum break load is 4 times the W.L.L.
- Marked with manufacturers mark and grade (8/80).
- Spare centre pins and bushes available.

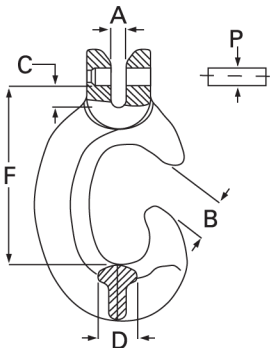


code	chain dia. (mm)	part no.	A (mm)	B (mm)	C (mm)	D (mm)	E (mm)	F (mm)	P x L (mm)	weight (kgs/each)
K0508	6	WA58/CL06	18	45	18	7.8	7.6	14	4.8x38.5	0.07
K0501	7	WA60/CL07	19	51	20	10	9	16	6x46.5	0.10
K0507	8	WA59/CL08	23	62	25	11.5	10	18	6.3x53	0.25
K0502	10	WA61/CL10	27	72	30	12.6	12.6	23	8x63.5	0.35
K0503	13	WA62/CL13	34	88	36	19	16.7	27	10x79	0.68
K0504	16	WA63/CL16	39	103	40	21	21	33	14x106	1.10
K0505	20	WA64/CL20	47	116	48	23	23	44	14x108	1.70
K0506	22	WA65/CL22	55	133	51	26.5	26.5	49	16x134	2.20
K0509	26	CL26	66	148	60	31.5	31.5	60	-	4.20
K0510	32	CL32	79	183	69	37	37	67	-	7.19

Grade 8 Clevis 'C' Hook



- Meets the performance requirements of BS-EN 1677-1.
- Suitable for use with Grade 8 Chains.
- Painted finish.
- Alloy steel, quenched and tempered.
- Clevis fitting enables direct connection to chain.
- Proof load tested to 2.5 times the W.L.L.
- Minimum break load is 4 times the W.L.L.
- Marked with manufacturers mark and grade (8/80).
- Spare Clevis load and retaining pins available.



code	chain dia. (mm)	part no.	A (mm)	B (mm)	C (mm)	D (mm)	F (mm)	P (mm)	weight (kgs/each)
K1001	7/8	CH7/CT08	9	20	11	22	90	9	0.56
K1002	10	CH10/CT10	12	28	14	28	129	12.5	1.40
K1003	13	CH13/CT13	15	39	17	35	166	16	3
K1004	16	CH16	18	43	17.5	42	198	19.5	6

NEVER EXCEED MAXIMUM CAPACITY

Ensure operator follows safe use instruction guidelines