



FreeCon Active PROFINET-FO-Repeater

IE-CDR-V14MSCPOF/VAPM-C

Foreword

The FreeCon Active PROFINET-FO-Repeater from Weidmüller is a repeater for PROFINET IRT industrial use. It provides extended fibre-optic diagnostic capabilities in addition to its repeat and refresh functionality. The FreeCon Active's tough IP65 metal housing is perfectly suited for harsh robotics applications.

Revision history

Version	Date	Changes
1.0		First edition

Contact address



Weidmüller Interface GmbH & Co. KG
Postfach 3030
32720 Detmold
Klingenbergstraße 16
32758 Detmold, Germany
Phone +49 (0) 5231 14-0
Fax +49 (0) 5231 14-2083
E-Mail info@weidmueller.com
Internet www.weidmueller.com

Copyright notice

Copyright © 2011 Weidmüller Interface GmbH & Co. KG

All rights reserved.

Reproduction without permission is prohibited.

Contents

Foreword	3
Revision history	3
Contact address.....	3
Copyright notice.....	3
Contents	4
1. Safety Notices	6
1.1 Proper and intended use.....	6
1.2 Qualified staff	6
1.3 Accuracy of the technical documentation.....	6
1.4 CE label	6
1.5 Declaration of Conformity.....	6
1.6 Recycling in accordance with WEEE	7
2. Overview of the FreeCon Active Repeater	8
2.1 Electrical Characteristics	9
2.2 Internals	9
2.3 Mechanical Characteristics	9
3. Installation and Connectors	10
3.1 Mounting	10
3.2 Power connection.....	11
3.3 Data connection	11
3.4 Grounding/Earthing	12
4. Setup and Network Configuration	13
4.1 Setup with GSDML file	13
4.2 Setup with Weidmüller FreeCon CFG	14
4.3 Using a web browser to access the repeater	16
4.4 SNMP configuration	17
4.5 FTP configuration.....	17
4.6 Discovery and basic Configuration Protocol (DCP).....	17
4.7 Link Layer Discovery Protocol (LLDP)	17
4.8 Updating the firmware	17

5. Extended Diagnostic Capabilities..... 19

5.1 PLC diagnostics 19

5.2 Web browser diagnostics 23

6. Status and Maintenance 24

6.1 LED indicators 24


7. Technical Specifications 26


8. Warranty 28

Appendix A: Pin assignments for data and power port 29

1. Safety Notices

1.1 Proper and intended use

	NOTE
	This device is intended for use in applications as described in the operating instructions only. Any other form of usage is not permitted and can lead to accidents or destruction of the device. Using the products in non-approved applications will lead immediately to the expiration of all guarantee and warranty claims on the part of the operator against the manufacturer.

	WARNING: Danger
	Using the selected device for purposes other than those specified or failure to observe the operating instructions and warning notes can lead to serious malfunctions that may result in personal injury or damage to property.

1.2 Qualified staff

These operating instructions have been written for trained and qualified personnel who are familiar with the valid regulations and standards applicable to the field of application.

1.3 Accuracy of the technical documentation

These operating instructions have been written with due care and attention. Unless otherwise required by law, we do not guarantee that the data, images and drawings are accurate or complete nor do we accept liability for their contents. Weidmüller's general terms and conditions of sale apply in their respective valid form.

This document is subject to alteration without notice.

1.4 CE label

This product fulfils the guidelines issued by the European Union (EU) and is therefore entitled to carry the CE mark. The CE Declaration of Conformity is available on request from Weidmüller.

1.5 Declaration of Conformity

The product fulfils both the Low Voltage Directive 73/23/EEC and the EMC Directive 89/336/EEC.

1.6 Recycling in accordance with WEEE

B-to-B disposal

Dear Weidmüller Customer,

Purchasing our product gives you the opportunity to return the device to Weidmüller at the end of its service life.



The EU Directive 2002/ 96 EC (WEEE) regulates the return and recycling of waste electrical and electronics equipment. In the Business to Business sector (B-to-B), manufacturers of electrical equipment are obliged as of 13/08/05 to take back and recycle free-of-charge electrical equipment sold after that date. After that date, electrical equipment must not be disposed through the "normal waste disposal channels". Electrical equipment must then be disposed of and recycled separately.

All devices that fall under the directive must feature this logo.

What we can do for you?

Weidmüller offers you the possibility of returning your old device to us at no extra charge. Weidmüller will then professionally recycle and dispose of your device in accordance with the applicable laws.

What do you have to do?

Once your device has reached the end of its service life, simply return it by parcel service (in the box) to the Weidmüller subsidiary responsible for customer care - we will then initiate the necessary recycling and disposal measures.

You will incur no costs or face any inconvenience.

2. Overview of the FreeCon Active PROFINET-FO-Repeater

The FreeCon Active PROFINET-FO-Repeater is used to refresh the fibre-optic signal over long industrial fibre optic paths. The additional diagnostic functions enable it to also monitor the fibre-optic lines used for industrial and robotics applications.

It serves three important functions:

- Provides key PROFINET diagnostics information,
- Enables the user to swap out robotics cabling at the proper time,
- Extends the allowed fibre-optic segment lengths by refreshing the fibre-optic signal.

The device is connected in-line with the power and fibre-optic cables using PushPull connectors. The extended diagnostics allow you to monitor the fibre-optic path; they also provide an early warning mechanism indicating when a robot's cabling needs to be replaced. The illustration below shows how the FreeCon Active PROFINET-FO-Repeater fits into a typical robotics application.

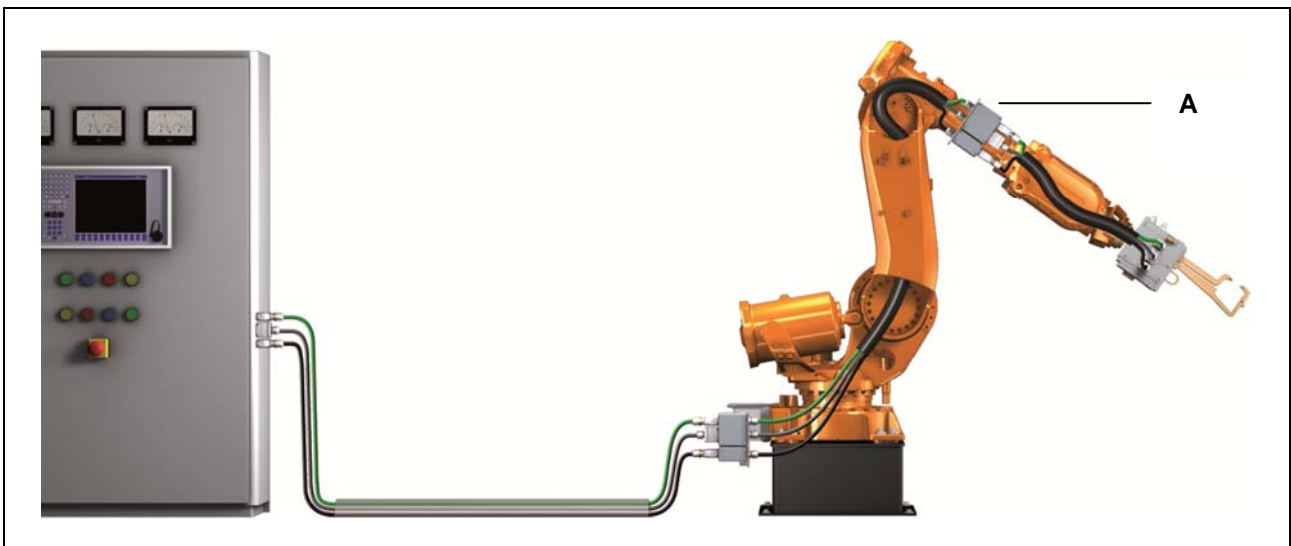


Figure 1 The FreeCon Active PROFINET-FO-Repeater positioned in a typical robotics application

A - Weidmüller FreeCon Active PROFINET-FO-Repeater on axis 3 of the robot

2.1 Electrical characteristics

The FreeCon Active PROFINET-FO-Repeater uses a typical input current between 150 mA to 200 mA. It operates with an input voltage ranging from 18 to 30 VDC and a temperature range between -20 to 55 °C. The maximum power must not exceed 24 V and 16 A on either US1 or US2 at 40 °C (see chapter 3.2 power connection).

2.2 Internal CPU

The FreeCon Active PROFINET-FO-Repeater is equipped with an ERTEC 200 processor. It runs the VxWorks operating system and uses the PROFINET protocol stack.

2.3 Mechanical characteristics

The device measures 112 mm by 52 mm by 130 mm. It has two PushPull power ports and two PushPull fibre-optic data ports, as shown in the illustration below.

The FreeCon Active PROFINET-FO-Repeater is not intended for outdoor usage.



Figure 2 The FreeCon Active PROFINET-FO-Repeater

3. Installation and Connectors

3.1 Mounting

Refer to the illustrations below for the actual mounting dimensions. Four screws must be used to mount the FreeCon Active PROFINET-FO-Repeater to a wall. Use the device itself as a guide to mark the proper locations for the four screws. We recommend using M4x10mm screws or longer.

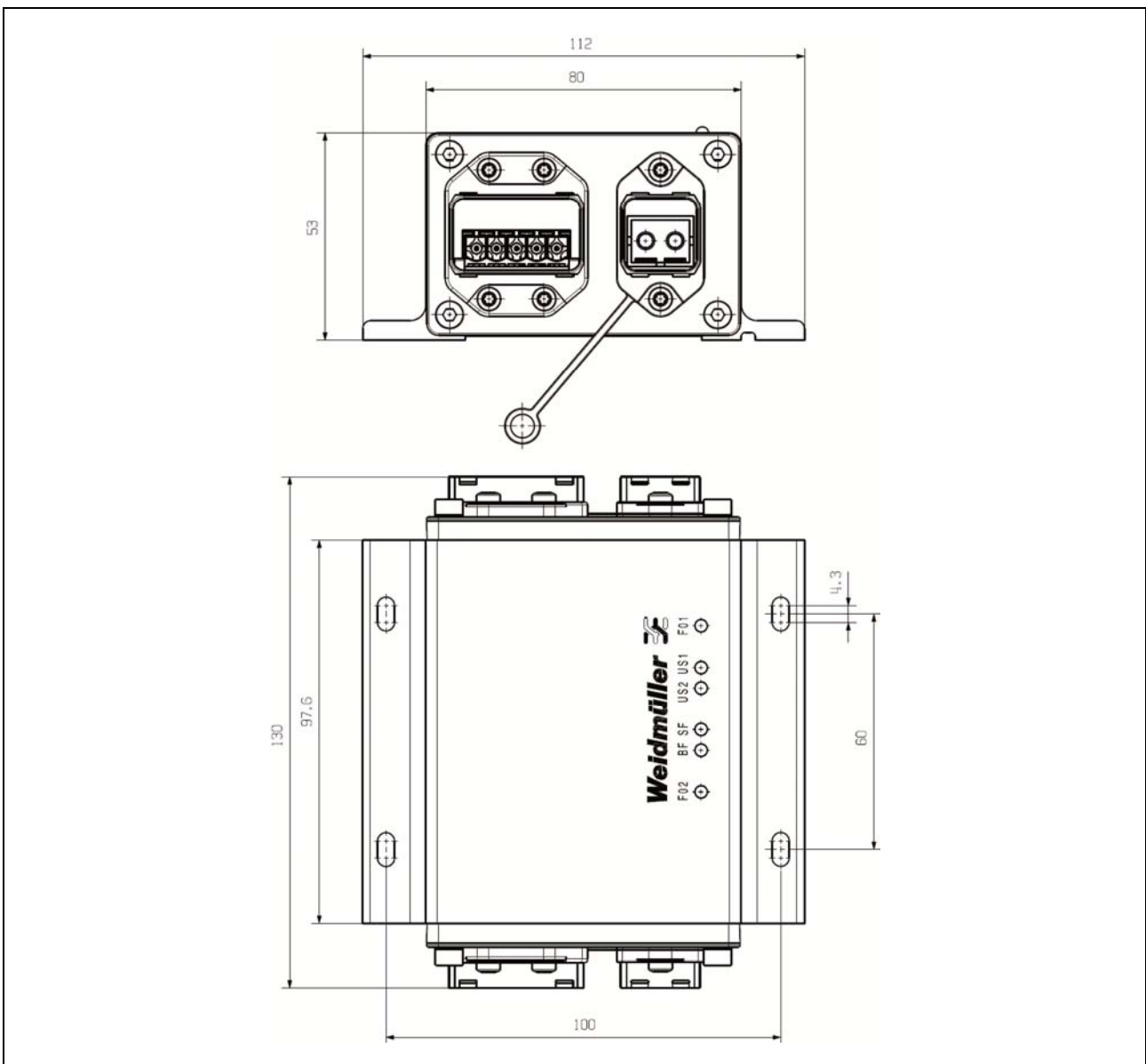


Figure 3 Mounting dimensions

3.2 Power connection

	WARNING
	Safety First! Calculate the maximum possible current in each power wire and common wire. Observe all electrical codes dictating the maximum current allowable for each wire size. If the current goes above the maximum ratings, the wiring could overheat, causing serious damage to your equipment.

The fibre-optic signal cables for the FreeCon Active PROFINET-FO-Repeater can be routed in a single cabling channel together with the power cabling. The cabling should be implemented in accordance with the PROFINET Installation Guideline for Cabling and Assembly.

We recommend labelling the wiring to all devices.

Use Weidmüller's IE-PS-VAPM-24V power plug (order number 1068910000) to connect to the FreeCon Active PROFINET-FO-Repeater.



Figure 4 The IE-PS-VAPM-24V power plug

Pin assignments for the power connector:

- 1: L1 24 VDC (US1+)
- 2: N1 0 VDC (US1-)
- 3: L2 24 VDC (US2+)
- 4: N2 0 VDC (US2-)
- 5: FE Functional earth

Power is supplied to the FreeCon Active PROFINET-FO-Repeater only via US1. US2 is forwarded through the device and only used for actuator supply.

3.3 Data connection

The FreeCon Active PROFINET-FO-Repeater has two 100BaseFX Ethernet ports for polymer optical fibre (POF). These SC-type fibre ports are fairly straightforward to connect since optical-fibre connections do not require the circuit needed for electrical signals.

One of the optical lines is used to transmit data from device I to device II, and the other optical line is used transmit data from device II to device I, for full-duplex transmission. Remember to connect the Tx (transmit) port of device I to the Rx (receive) port of device II, and the Rx (receive) port of device I to the Tx (transmit) port of device II, as shown in the illustration below.

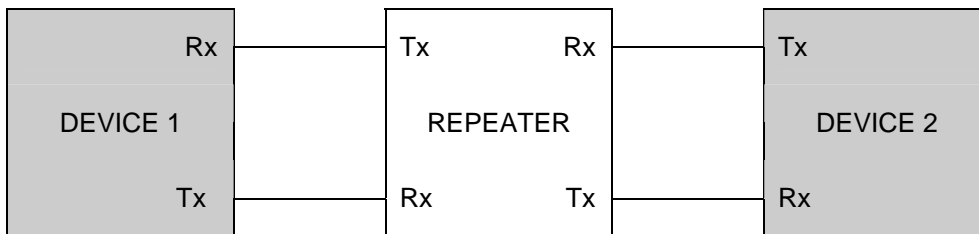


Figure 5 Rx-to-Tx cabling between the device and the FreeCon Active PROFINET-FO-Repeater

Use Weidmüller's PushPull **STEADYTEC**[®] data plug: the IE-PS-V14M-2SC-POF (order number 1191550000).



Figure 6 The IE-PS-V14M-2SC-POF data plug

	WARNING
	<p>This is a Class 1 Laser/LED product. To avoid causing serious damage to your eyes, do not stare directly into the Laser Beam.</p>

3.4 Grounding/earthing

Proper earthing and wire routing are important in order to limit the effects of electromagnetic interference (EMI). The earthing on the FreeCon Active PROFINET-FO-Repeater is established using the functional earth from the power plug.

4. Setup and Network Configuration

The FreeCon Active PROFINET-FO-Repeater can be configured and integrated into your system using either of the two available access methods: controller setup with GSDML file or Weidmüller FreeCon CFG access. Once a proper IP address has been assigned, you can also access and configure the device using a web browser. Note that the factory default IP address is 0.0.0.0, in accordance with PROFINET specifications, and must be changed before accessing the FreeCon Active PROFINET-FO-Repeater with a web browser.

It is essential that the FreeCon Active PROFINET-FO-Repeater has a valid TCP/IP configuration so that it can function properly on the network. The TCP/IP settings are stored internally in the system file “\ethcfg.cfg”. These settings can be changed using one of the methods described below.

4.1 Setup with GSDML file

The FreeCon Active PROFINET-FO-Repeater is normally installed within a facility by integrating its GSDML file in the PLC configuration. The GSDML file and a .BMP icon of the repeater are archived on the repeater itself (in the compressed file Fca-pir-pof.zip). These files can be downloaded using the repeater’s web interface as described in section 4.3 below.

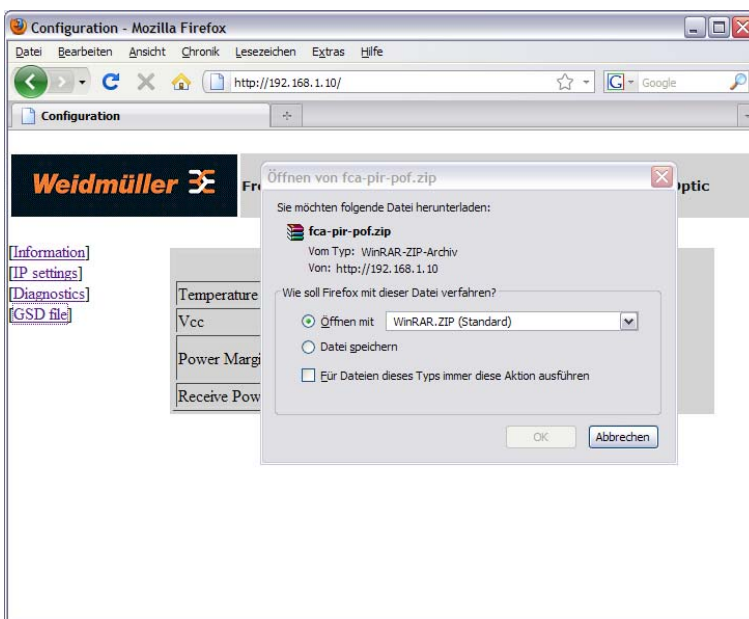


Figure 7 Downloading the GSDML file from the FreeCon Active PROFINET-FO-Repeater

Be sure to check that the version stored on the FreeCon Active PROFINET-FO-Repeater is up-to-date. The latest version of the GSDML file can be downloaded from the Weidmüller website www.weidmueller.com → downloads → Industrial Ethernet.

The GSDML file defines the parameters and configurable settings for the repeater. It is used by the PLC configuration software (Siemens Step 7) to configure and integrate the repeater within the entire facility.

Before accessing the extended diagnostic settings, you will need to import the GSDML file and integrate it into your topology. The exact procedure varies depending on the type of PLC configuration software in use.

4.2 Setup with Weidmüller FreeCon CFG

The software utility “FreeCon CFG” can also be used to configure the FreeCon Active PROFINET-FO-Repeater. This software – which can be downloaded free from the Weidmüller website – scans the Ethernet and displays any FreeCon Active PROFINET-FO-Repeater that it finds. The program can access the settings of any device on the network using UDP on port 3250.

Carry out the following steps to run this utility:

- 1 Connect the PushPull power connector to the power port of the FreeCon Active PROFINET-FO-Repeater.
- 2 Connect the PushPull data connector to the data port of the FreeCon Active PROFINET-FO-Repeater.
- 3 Start the “FreeCon CFG.exe” on your PC (PC must be connected to the same network)
- 4 Click on the Scan button to scan for Weidmüller devices.

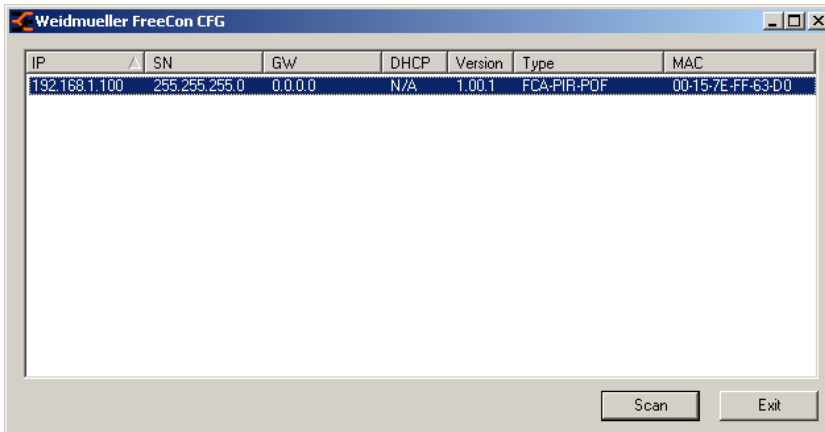


Figure 8 Scanning for Weidmüller devices in FreeCon CFG

- 5 The repeater will show up as “FCA-PIR-POF” in the list of detected devices. Double click on the IP address to change it (may vary from IP address shown in illustration).
- 6 Click on the Set button to apply the new settings. The new IP address is also stored in “\ethcfg.cfg”.

Configure: 00-15-7E-FF-63-D0

Ethernet configuration

IP address: 192 . 168 . 1 . 100

Subnet mask: 255 . 255 . 255 . 0

Default gateway: 0 . 0 . 0 . 0

Primary DNS: 0 . 0 . 0 . 0

Secondary DNS: 0 . 0 . 0 . 0

Hostname:

Password:

New password:

Change password

DHCP

On

Off

Figure 9 Configuring a new IP address in FreeCon CFG

4.3 Using a web browser to access the device

After the FreeCon Active PROFINET-FO-Repeater has been configured using FreeCon CFG, the web server hosted on the repeater can be accessed using the assigned IP address. Use a web browser installed on a PC that is on the same subnet. The web interface can be used to manually display the device properties (firmware version, serial number and MAC address) or to change settings (IP, subnet mask or gateway addresses).

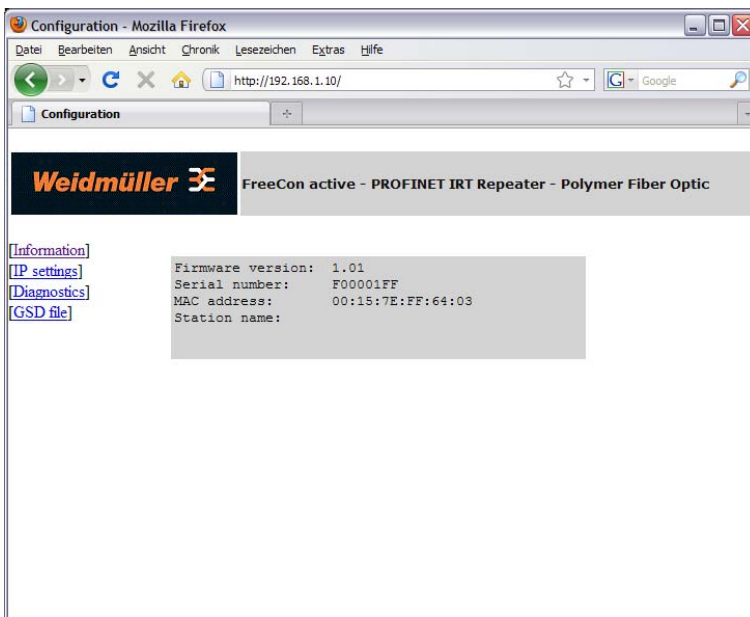


Figure 10 Properties of the FreeCon Active PROFINET-FO-Repeater, as viewed in web browser

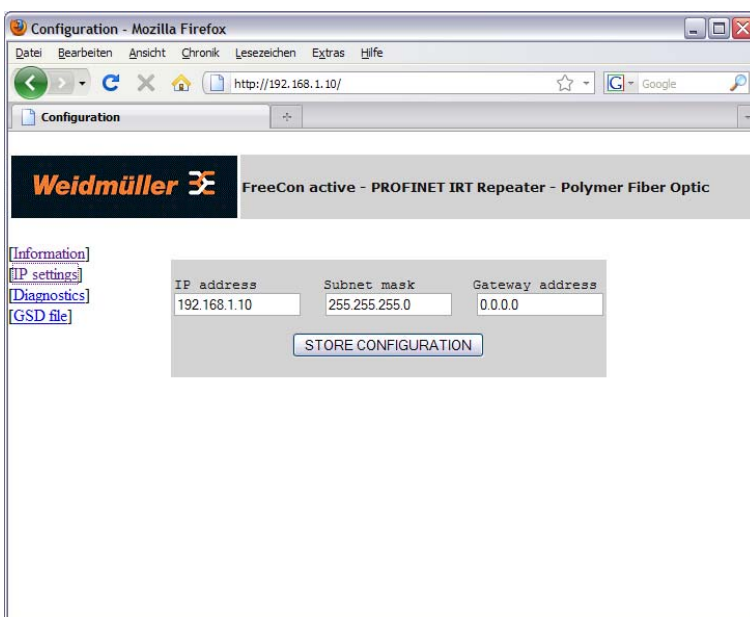


Figure 11 Using the web browser to configure the FreeCon Active PROFINET-FO-Repeater

The FreeCon Active PROFINET-FO-Repeater must be power cycled after clicking on the STORE CONFIGURATION button. The changes will then take effect after the reboot.

4.4 SNMP configuration

The FreeCon Active PROFINET-FO-Repeater supports the Simple Network Management Protocol (SNMP) in compliance with the PROFINET standard and supports MIB-2. A Network Management Station can be used to remotely configure, monitor and manage the repeater. A message-based communication scheme is used to retrieve data from the device's Management Information Base (MIB).

4.5 FDT configuration

The FreeCon Active PROFINET-FO-Repeater can be configured by FTP client. Get access via FTP client to the IP-address of the FreeCon Active PROFINET-FO-Repeater and download the file "ethcfg.cfg". You can change parameters like IP-address and subnet-mask with a standard editor and then upload the new file to the repeater. This kind of configuration is usable for batch application.

4.6 Discovery and basic Configuration Protocol (DCP)

The repeater provides full support for the PROFINET DCP protocol. This allows an IO controller or supervisor to discover the FreeCon Active PROFINET-FO-Repeater and change the IP settings.

4.7 Link Layer Discovery Protocol (LLDP)

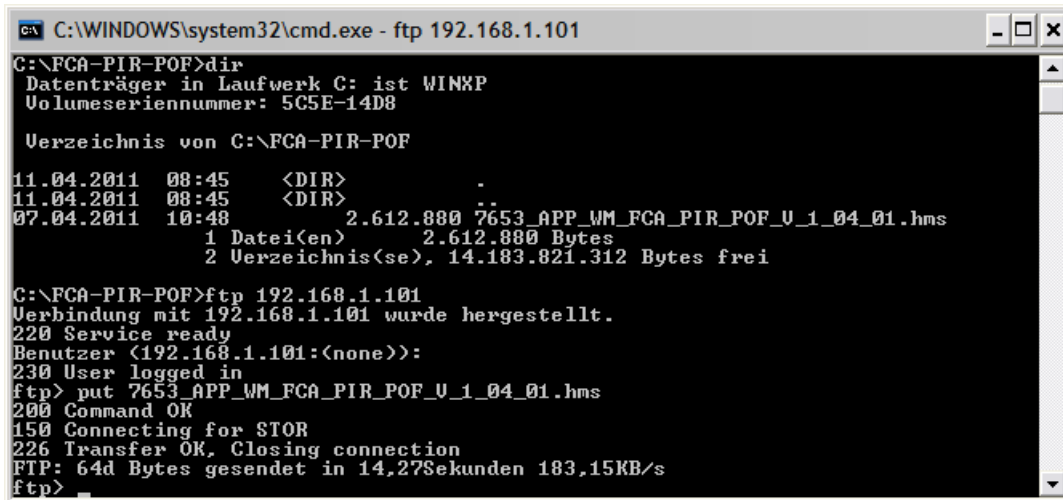
LLDP provides information about which "partner" is connected to which Ethernet port. This information is stored in the LLDP-MIB and can be read using SNMP.

4.8 Updating the firmware

The repeater's firmware can be updated by uploading a newer firmware file. Updated firmware files will be made available on the Weidmüller website.

The firmware file can be uploaded directly to the FTP server on the repeater.

To establish a FTP connection to the repeater, you have to set first an IP-address out of your subnet e.g. 192.168.1.101 (see chapter 4.2)



```
C:\WINDOWS\system32\cmd.exe - ftp 192.168.1.101
C:\FCA-PIR-POF>dir
Datenträger in Laufwerk C: ist WINXP
Volumeseriennummer: 5C5E-14D8

Verzeichnis von C:\FCA-PIR-POF
11.04.2011  08:45    <DIR>          .
11.04.2011  08:45    <DIR>          ..
07.04.2011  10:48                2.612.880 7653_APP_WM_FCA_PIR_POF_U_1_04_01.hms
               1 Datei(en)       2.612.880 Bytes
               2 Verzeichnisse, 14.183.821.312 Bytes frei

C:\FCA-PIR-POF>ftp 192.168.1.101
Verbindung mit 192.168.1.101 wurde hergestellt.
220 Service ready
Benutzer (192.168.1.101:(none)):
230 User logged in
ftp> put 7653_APP_WM_FCA_PIR_POF_U_1_04_01.hms
200 Command OK
150 Connecting for STOR
226 Transfer OK, Closing connection
FTP: 64d Bytes gesendet in 14,27Sekunden 183,15KB/s
ftp>
```

Figure 12 Transferring the firmware file with FTP

Use the command “ftp *IP-address*” to establish the FTP-connection to the repeater and confirm the user log-in with *Enter*. The confirmation “*user logged in*” appears.

With the command “put *filename*” you can transfer the new firmware to the device.

Note



The transfer of the firmware needs only a few seconds, then follows a check and **the update of the repeater, which needs up to 2 minutes**. During this update process only the LEDs US1 and US2 glow. Never interrupt the power supply during the firmware update process. After the successful update the repeater will start automatically and is again reachable via the old IP-address.

The GSDML-file, which is located on the repeater, will also be updated with the firmware update process. Check after installation whether the file is actual

Detailed description of the firmware update you will find at www.weidmueller.com/downloads.

5. Extended Diagnostic Capabilities

The FreeCon Active PROFINET-FO-Repeater measures and reports the temperature, voltage supply, optical amplitude margin and power budget. These values are normally accessed through the controller software (Step 7). They can also be accessed directly by connecting to the FreeCon Active PROFINET-FO-Repeater’s web server.

5.1 PLC integration

The diagnostic information can be handled by PROFINET PLCs. The following description is exemplary for the integration of the FreeCon Active FO-Repeater in the Siemens Step 7 PLC.

After creating a new project incl. PLC, add a PROFINET IO system.

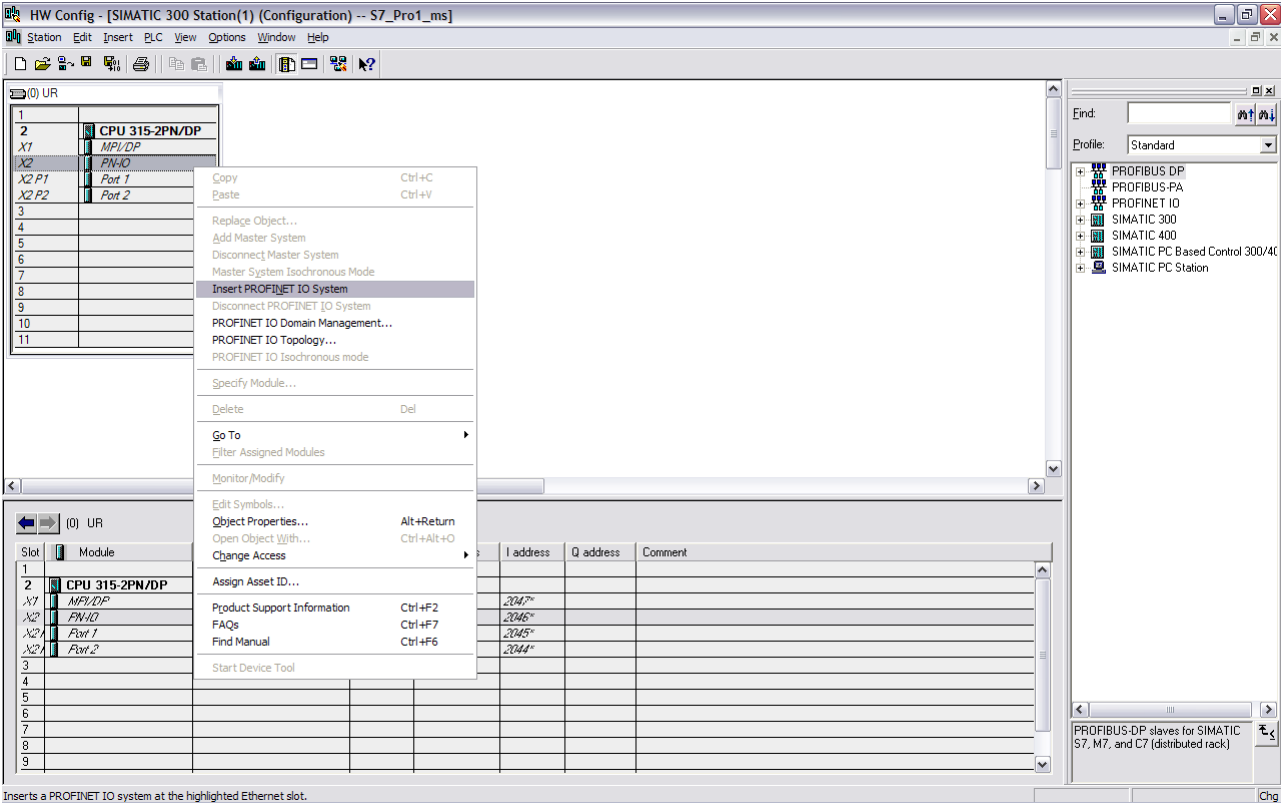


Figure 13 Step 7 adding PROFINET IO system

Now add the repeater to the Ethernet network and other devices by selection via the right mouse button and the menu point “insert object”. Optional you can use the hardware catalogue.

Extended Diagnostic Capabilities

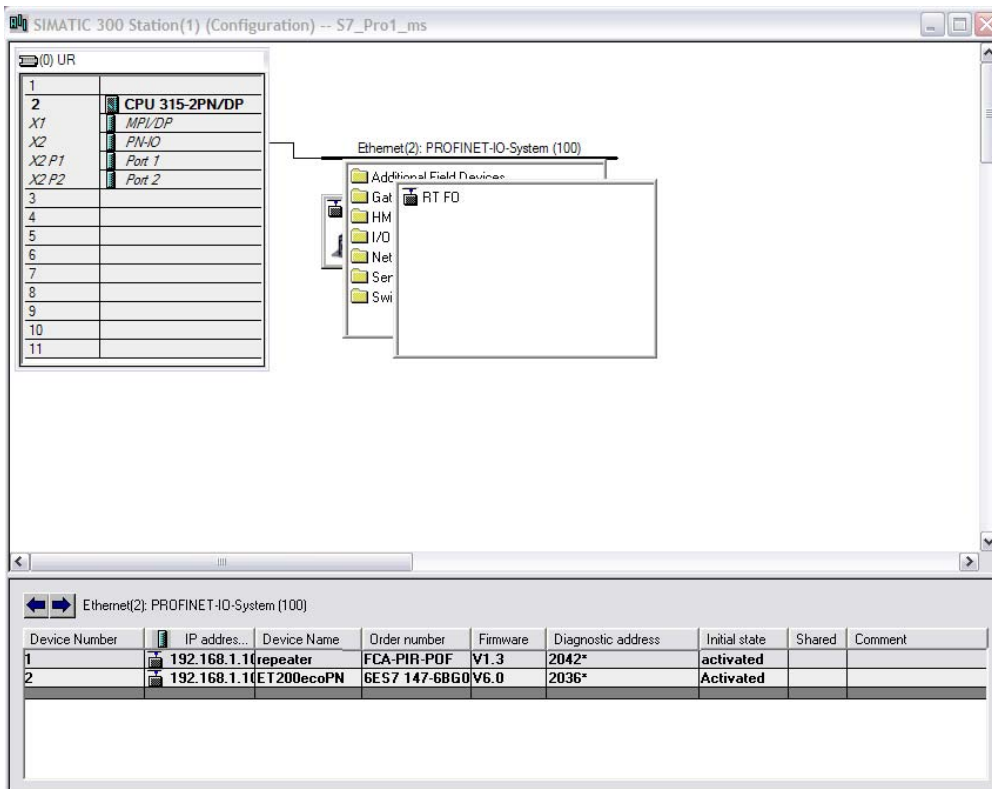


Figure 14 Projecting PROFINET devices

The next step is to set the IP-address and device names, to make them addressable in the PROFINET network.

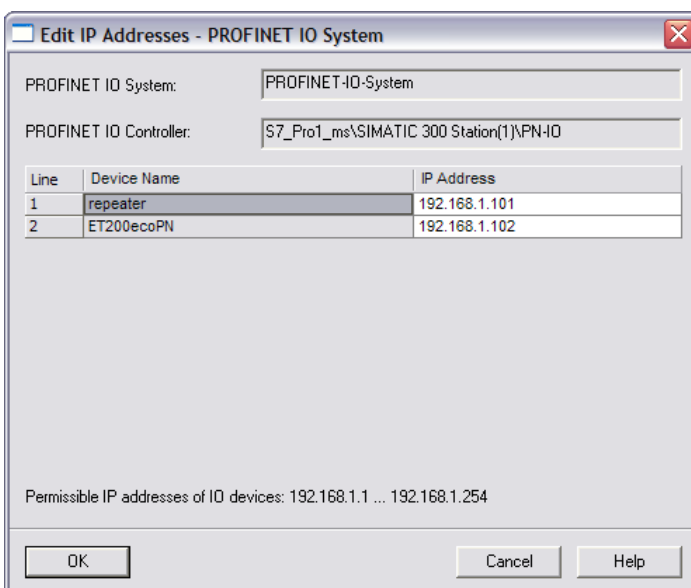


Figure 15 Setting IP-addresses

Via the properties window you get to the input mask of the device name:

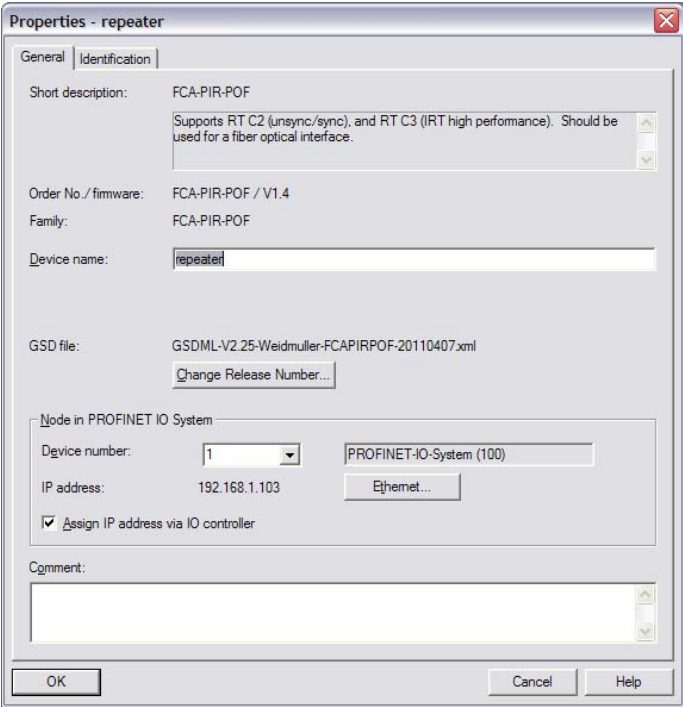


Figure 16 Properties window for adapting the device name

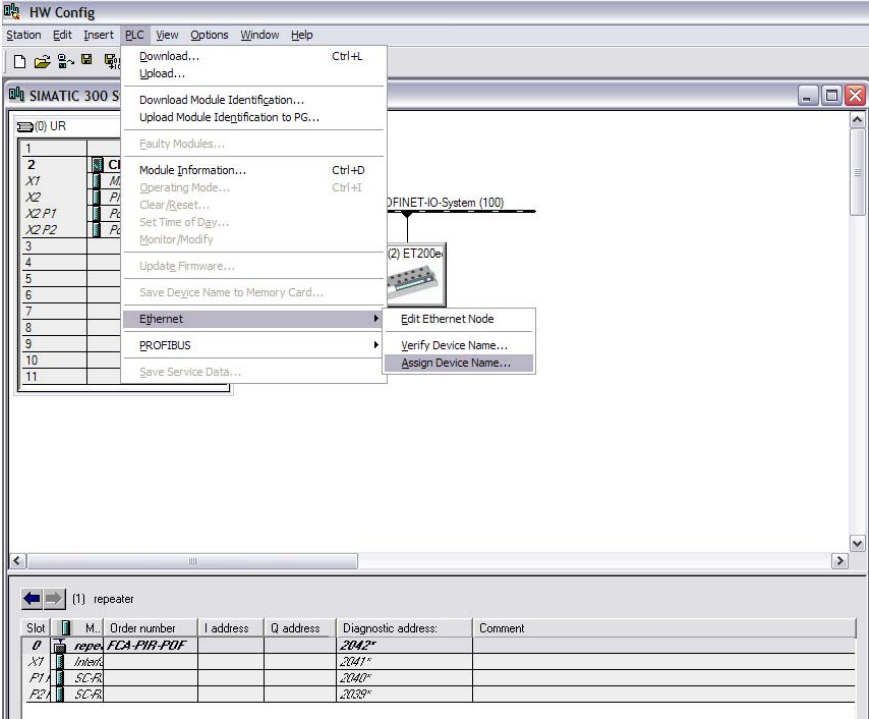


Figure 17 Setting device name

Extended Diagnostic Capabilities

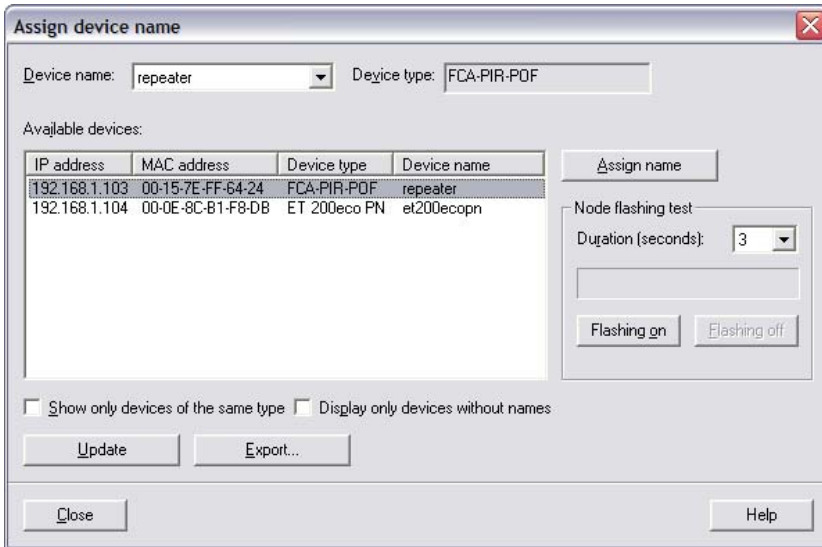


Figure 18 Assigning device name

Now load the project into the PLC and switch it to the run-mode. If the PROFINET network is well configured, the two LEDs SF and BF will be switched off.

You can see the diagnostic information of each part in the module information window (Step 7).

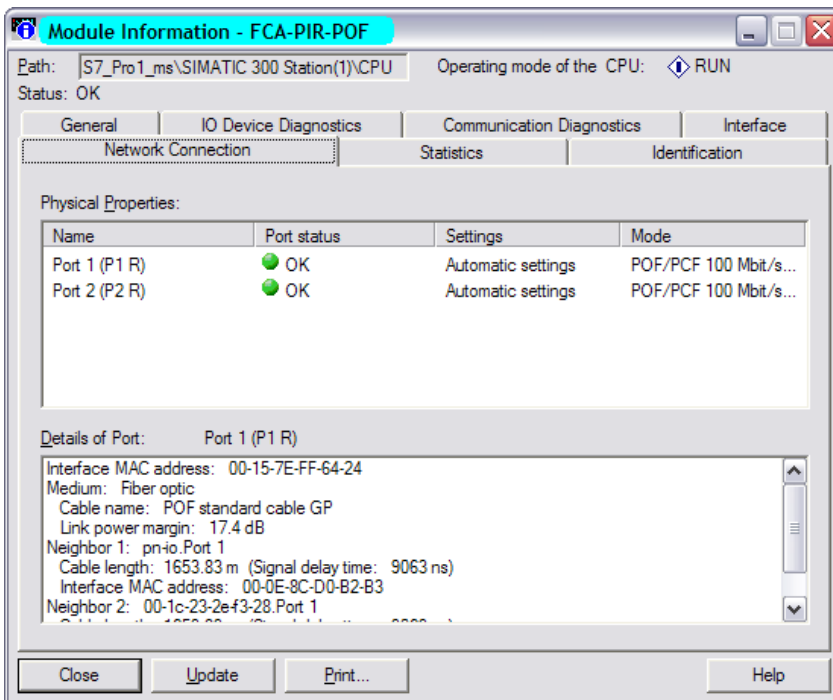


Figure 19 Step 7 Configurations

5.2 Web browser diagnostics

You can connect to the web server on the FreeCon Active PROFINET-FO-Repeater to access the diagnostic measurements; simply enter the FreeCon Active PROFINET-FO-Repeater's assigned IP address in your browser window and navigate to the diagnostics page. The following diagnostics screen will be shown:

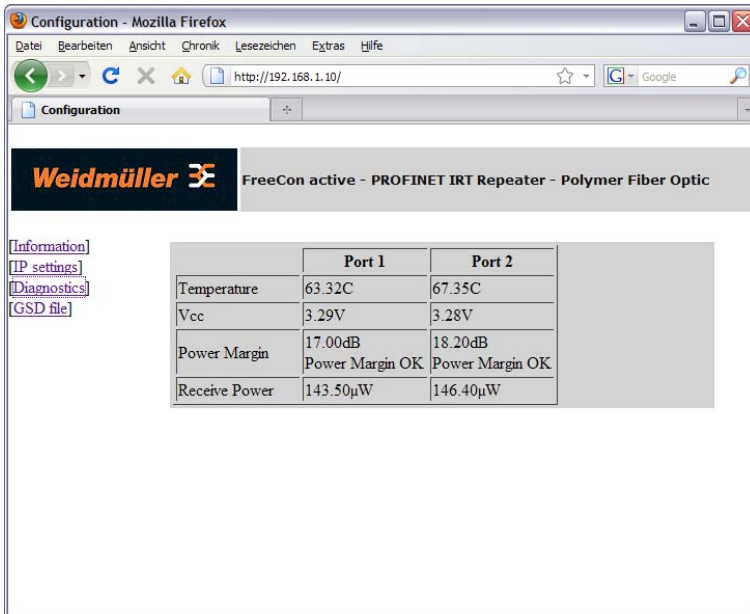


Figure 20 Browser-based diagnostics view

Temperature	The actual temperatures of both fibre-optic transceivers are shown here.
Vcc	The levels of the supply voltage to the fibre-optic transceivers for both data ports are shown here.
Power margin	The difference, in dB, between received optical power and the minimum optical power needed to overcome path losses and still satisfy the minimum input requirements of the receiver. The power margin is displayed for both fibre-optic transceivers.
Receive Power	The optical power received at both data ports is shown here.

6. Status and Maintenance

6.1 LED indicators

There are six LEDs visible on the top of the device; the function of each is described in the tables below.

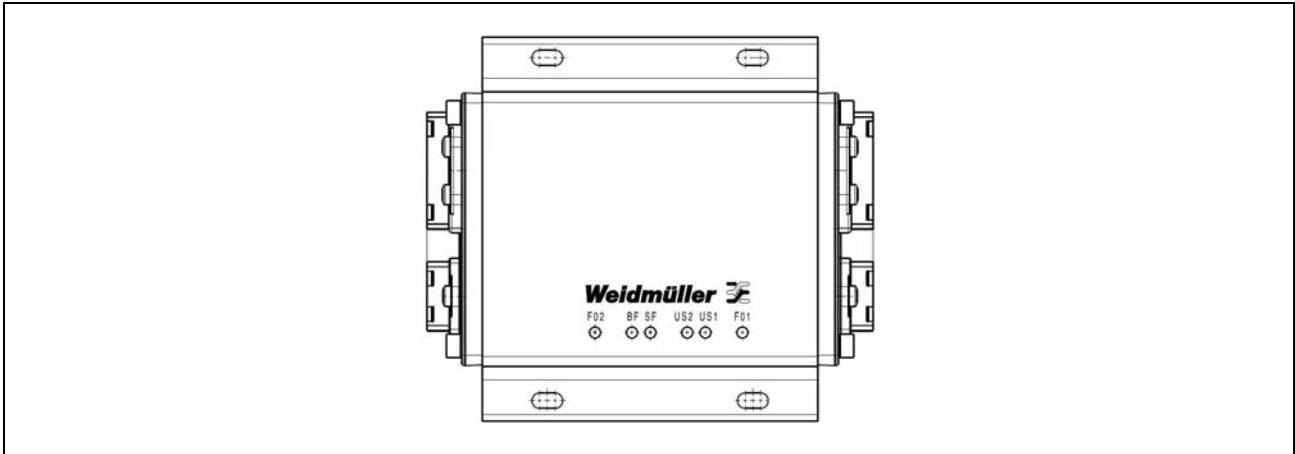


Figure 21 The six LEDs on the FreeCon Active PROFINET-FO-Repeater

6.1.1 The FO1 and FO2 LEDs

These two LEDs show the status of the fibre-optic transmission lines on ports 1 (FO1) and 2 (FO2).

Colour	Status	Indicates
Yellow	On (solid)	100 Mbps link on TP port is active and transmission okay.
Yellow	Blinking at 1 Hz	PROFINET I/O flash/blink identification (both LEDs blink at the same time)
	Off	No link, <i>or</i> Fibre optic RX power out of range (functionality enabled by the PROFINET I/O controller).

If one of the FO LEDs is off, check that the port is connected to a switch and that the fibre cables are properly attached (with correct polarity).

6.1.2 The US1 and US2 LEDs

These LEDs are controlled by the hardware as follows.

Colour	Status	Indicates
Green	On	Power is being supplied to the US1 (L1) or US2 (L2) power input.
	Off	Power not being supplied to the US1 (L1) or US2 (L2) power input, or voltage below 18 V.

6.1.3 The SF LED

This LED is used to indicate a system failure or error.

Colour	Status	Indicates
Red	On (solid)	One or more of the following errors: - FO-transceiver not okay, - Configuration error, - Station name has not been assigned, - IP number has not been assigned, - No connection to I/O controller, - Power margin below 2 dB.
	Off	Status okay.

If the SF LED is on, check the following:

- That fibre cables are properly attached,
- That the station name is properly specified,
- That the proper IP Address is set (if not set by the I/O Controller),
- That the hardware configuration is correct.

6.1.4 The BF LED

This LED is used to indicate a bus failure.

Colour	Status	Indicates
Red	On (solid)	No connection to network (links down on port 1 and port 2).
Red	Blinking at 0.5 Hz	No connection to I/O controller.
	Off	Connection to I/O controller (usually the PLC) is established.

If the BF LED is on, check at least one port is properly connected. If the BF LED is blinking, check the following:

- That the station name is properly specified,
- That the proper IP Address is set (if not set by the I/O controller),
- That the hardware configuration is correct.

7. Technical Specifications

Technology standards	100BaseFX POF Fast Ethernet, PROFINET IRT
Fibre interface	Two 100BaseFX POF ports (PROFINET PushPull V14 connector, POF)

100BaseFX Optical Fibre (POF)	
Wavelength	650 nm
Max. TX	-2 dBm
Min. TX	-8.5 dBm
RX sensitivity	-25 dBm
Link Budget	16.5 dB
Typical distance	50 m (using P980/1000 POF cable (160 dB/km))
Saturation	+1 dBm

Power	
Input voltage	18...30 V DC
Input current	0.15 A / 24 V DC
Power connection	Power PushPull connector
Reverse polarity protection	Yes
Max. Power	16 A per port

Physical characteristics	
Housing main material	Aluminium profile, Cover: zinc diecast, painted
Degree of protection	IP65
Dimensions	112 mm x 52 mm x 130 mm
Weight	780 g
Installation type	Wall mounted using four M4 screws (10 mm or longer)

Ambient conditions	
Operating temperature	-20 °C...55 °C
Storage temperature	-40 °C...70 °C
Ambient relative humidity	5%...95% (non-condensing)

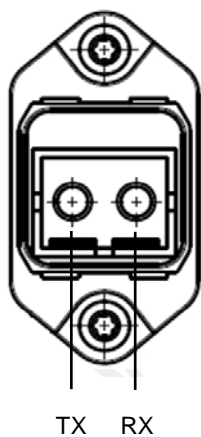
Regulatory Approvals		
Safety	UL 1863	
Emissions	EN 61000-6-4 Class A	
ESD	EN61000-4-2	Level 3
RF	EN61000-4-3	Level 3
Burst	EN61000-4-4	Level 3
Surge	EN61000-4-5	Level 3
CRFI	EN61000-4-6	Level 3
Shock	IEC 60068-2-27	
Hammer	IEC 60068-2-75	
Vibration	IEC 60068-2-6	

8. Warranty

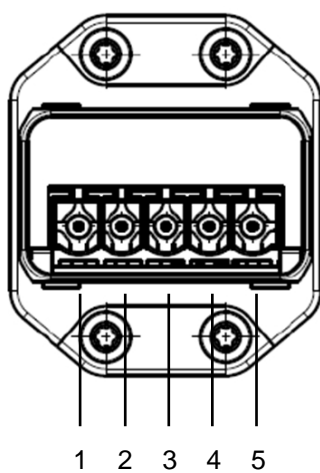
Weidmüller grants a warranty on this product in accordance with the warranty terms as described in the general conditions of sale of the Weidmüller company which has sold the products to you. Weidmüller warrants to you that such product defects of which have already existed at the time of delivery will be repaired by Weidmüller free of charge or that Weidmüller will provide a new, functionally equivalent product to replace the defective one. Save where expressly described otherwise in writing in this catalogue/product description, Weidmüller gives no warranty or guarantee as to the interoperability in specific systems or as to the fitness for any particular purpose. To the extent permitted by law, any claims for damages and reimbursement of expenses, based on whatever legal reason, including contract or tort, shall be excluded. Where not expressly stated otherwise in this warranty, the general conditions of purchase and the expressive liability commitments therein of the respective Weidmüller company which has sold the products to you shall be applicable.

Appendix A: Pin assignments for data and power port

Data port



Power port



Pin assignments

1	2	3	4	5
L1	N1	L2	N2	FE
US1+	US1-	US2+	US2-	FE