

For Low Pressure

Cube Cupla

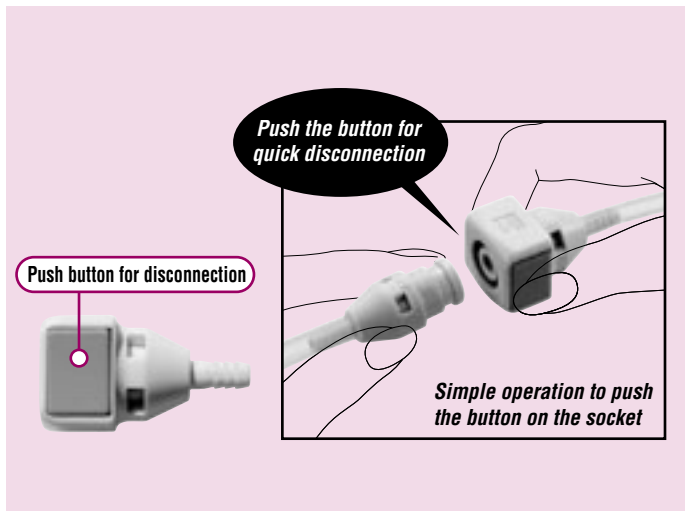
Small and lightweight coupling for air supply lines to medical and/or scientific equipment

Working pressure 1.0 1.0 MPa (10 kgf/cm ²)	Valve structure Two-way shut-off One-way shut-off Straight through	Applicable fluids Air Water
--	--	--

Both socket and plug have built-in valve types and valveless types. Simple one action for connection or disconnection. Lightweight plastic coupling.

- Compact design for space saving.
- Just push plug into socket for connection. Simply push the button on the socket for disconnection.
- Suitable for a wide range of applications from medical/scientific equipment to beverage machines or semiconductor manufacturing devices.

Note: When valveless type socket or plug is used, fluid will flow out of it when disconnected.



Specifications				
Body material	Polyacetal resin (POM)			
Size	4mm and 6mm ID tube, female thread Rc 1/8			
Working pressure MPa (kgf/cm ²)	1.0 (10)			
Pressure resistance MPa (kgf/cm ²)	1.5 (15)			
Seal material	Seal material	Mark	Working temperature range	Remarks
Working temperature range	Nitrile rubber	NBR (SG)	-20°C~+60°C	Standard material

Max. Tightening Torque		N·m (kgf·cm)
Size	1/8"	
Torque	1.3 (13)	

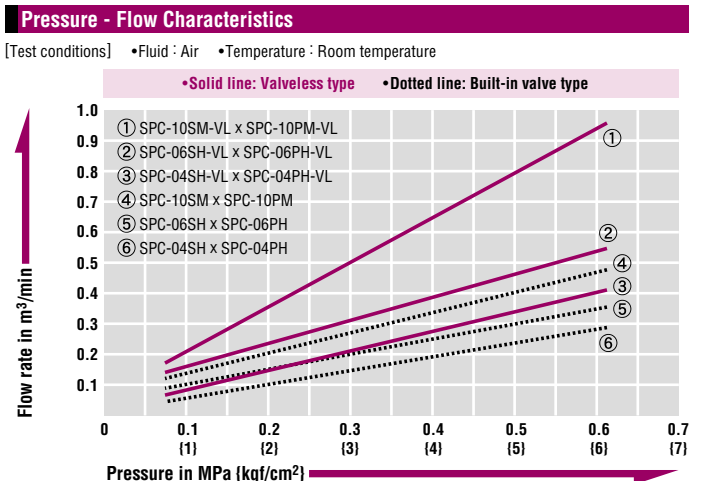
Flow Direction

Fluid may flow in either direction from plug or from socket side when coupled.

Interchangeability
Can be connected with plug and socket for Cube Cupla of the same type regardless of end configurations. However, built-in valve sockets cannot be connected with valveless plugs.

Min. Cross-Sectional Area (mm ²)						
Model	04PH/04PHB	06PH/06PHB	10PM	04PH-VL/04PHB-VL	06PH-VL/06PHB-VL	10PM-VL
SPC-04SH	5	5	5	—	—	—
SPC-06SH	5	8.6	8.6	—	—	—
SPC-10SM	5	8.6	8.6	—	—	—
SPC-04SH-VL	5	5	5	5	5	5
SPC-06SH-VL	5	8.6	8.6	5	10.2	10.2
SPC-10SM-VL	5	8.6	8.6	5	10.2	16.6

Suitability for Vacuum 53.0kPa (400mmHg)		
Socket only	Plug only	When connected
—	—	Operational



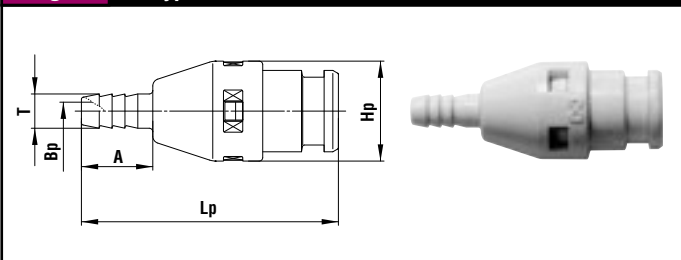
Connection capability Select the combination of models suitable to your applications

Connection capability	Plug	
	Valve	Without
Socket	With	Not connectable
	Without	Connectable

Socket: With (Two-way shut-off), Without (One-way shut-off, Straight through)

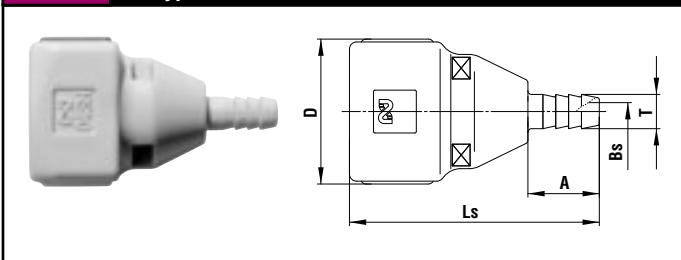
Models and Dimensions

Plug PH type (Hose barb)



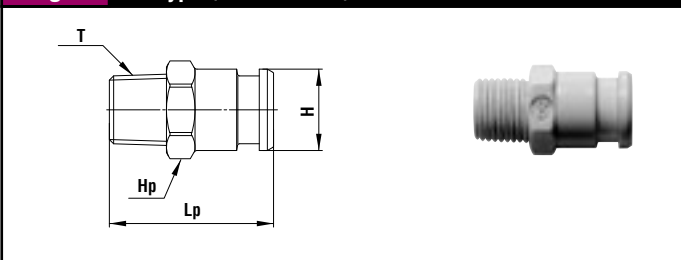
Model	Application (Tube)	Built-in valve	Mass (g)	Dimensions (mm)				
				Lp	A	øHp	øT	øBp
SPC-04PH	4mm ID	○	3.1	(36)	10	14	4.8	2.5
SPC-04PH-VL	4mm ID	—	2.6	(36)	10	14	4.8	2.5
SPC-06PH	6mm ID	○	3.4	(40)	15	14	7	3.6
SPC-06PH-VL	6mm ID	—	2.9	(40)	15	14	7	3.6

Socket SH type (Hose barb)



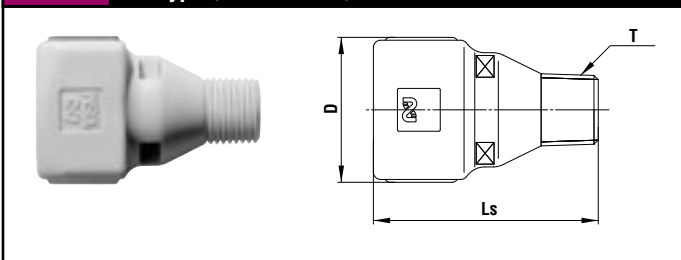
Model	Application (Tube)	Built-in valve	Mass (g)	Dimensions (mm)				
				Ls	A	D	øT	øBs
SPC-04SH	4mm ID	○	6.5	35	10	20.3	4.8	2.5
SPC-04SH-VL	4mm ID	—	6.1	35	10	20.3	4.8	2.5
SPC-06SH	6mm ID	○	7.0	40	15	20.3	7	3.6
SPC-06SH-VL	6mm ID	—	6.6	40	15	20.3	7	3.6

Plug PM type (Male thread)



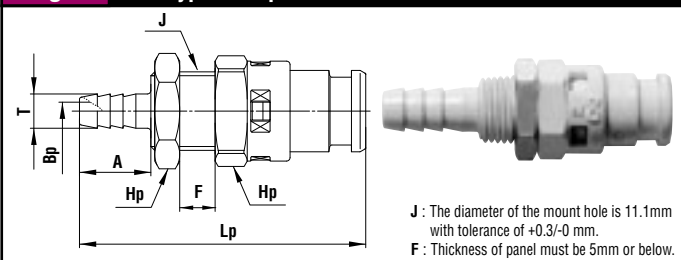
Model	Application	Built-in valve	Mass (g)	Dimensions (mm)			
				Lp	øH	Hp(wAF)	T
SPC-10PM	Rc 1/8	○	2.0	23	11.4	Hex.12	R 1/8
SPC-10PM-VL	Rc 1/8	—	1.5	23	11.4	Hex.12	R 1/8

Socket SM type (Male thread)



Model	Application	Built-in valve	Mass (g)	Dimensions (mm)		
				Ls	D	T
SPC-10SM	Rc 1/8	○	6.8	31.5	20.3	R 1/8
SPC-10SM-VL	Rc 1/8	—	6.4	31.5	20.3	R 1/8

Plug PHB type (For panel mount)



Model	Application	Built-in valve	Mass (g)	Dimensions (mm)				
				Lp	A	Hp(wAF)	øT	øBp
SPC-04PHB	4mm ID	○	5.9	(40)	10	Hex.14	4.8	2.5
SPC-04PHB-VL	4mm ID	—	5.4	(40)	10	Hex.14	4.8	2.5
SPC-06PHB	6mm ID	○	6.2	(45)	15	Hex.14	7	3.6
SPC-06PHB-VL	6mm ID	—	5.7	(45)	15	Hex.14	7	3.6

Application Example

