



FOR CEILINGS AND WALLS IN
SHOWERS, BATHROOMS AND WET ROOMS

Basix
PVC WATERPROOF PANELLING

Basix

PVC WATERPROOF PANELLING

BASIX PVC WATERPROOF PANELLING for ceilings and walls in showers, bathrooms and wet rooms.

- Suitable for wet and dry areas
- Simple and quick to fit
 - no wet trades required
- Full range of accessories available
- Easy to clean and hygienic
 - simply wipe clean
- A cost-effective alternative to tiling
- Non-porous and mould free
- Virtually maintenance free
- Provides excellent insulation and sound proofing
- Suitable for domestic installations



▶ Pergamon Marble



▶ Name Required?





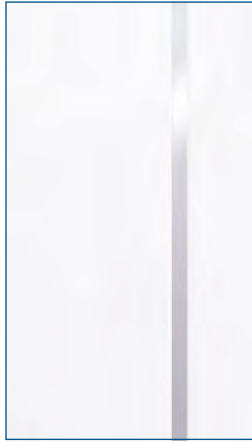
White Ash



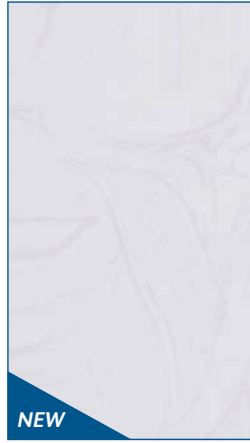
Gloss White



White
High Gloss

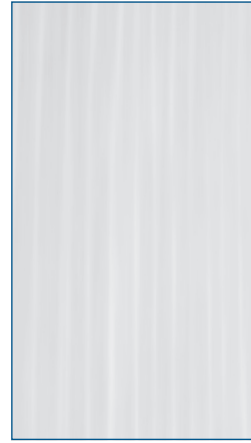


White Silver
Embedded High Gloss



NEW

White Wave
High Gloss



White Ash
Matt

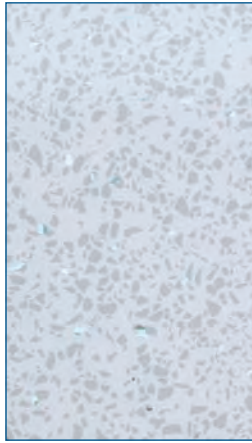


NEW

Green Marble
High Gloss



Pearl White Marble
High Gloss

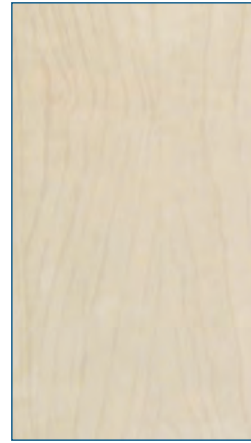


White Sparkle
High Gloss

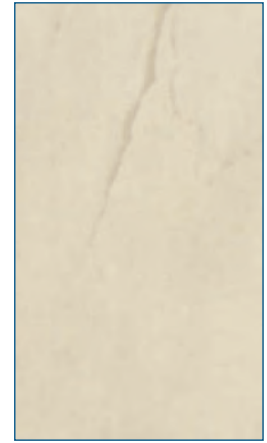


NEW

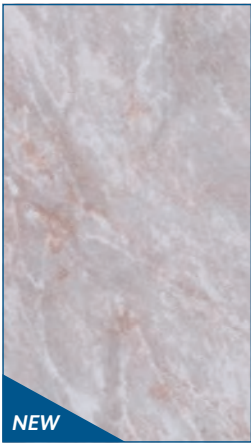
Beige Marble
High Gloss



White Wood
High Gloss

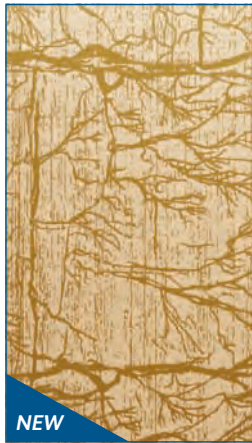


Soft Grey Marble
High Gloss



NEW

Grey Marble
High Gloss

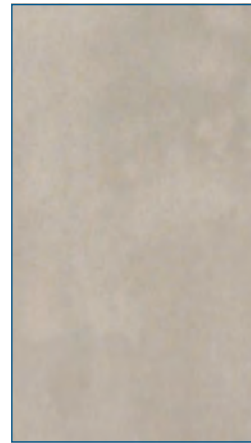


NEW

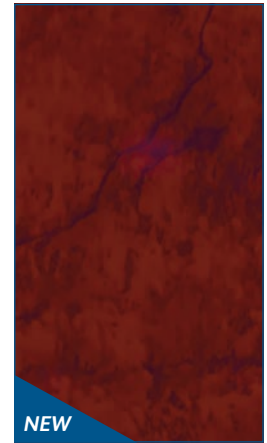
Gold
High Gloss



Pergamon Marble
High Gloss

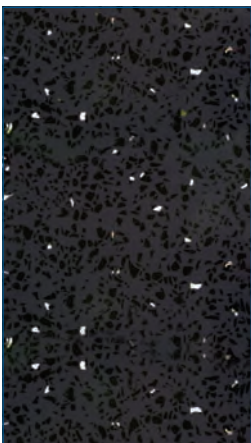


Pastel Grey Marble
High Gloss

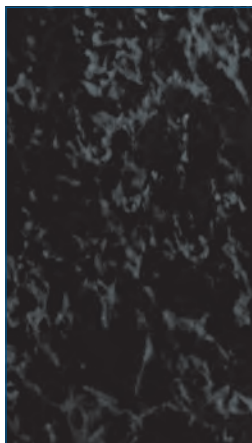


NEW

Red Marble
High Gloss



Black Sparkle
High Gloss



Black Marble
High Gloss



Black Wood
High Gloss

Disclaimer. Due to variations in the photographic and printing process, colours shown in this brochure may vary from the actual product. It is advisable to refer to a product sample before making your purchase.

We reserve the right to change the specification of these products without prior notification.

BASIX PVC WATERPROOF PANELLING SPECIFICATIONS

DIMENSIONS

Tongue & groove panels	Material	Height x width	Thickness	Per pack (4 panels)
Beige Marble	PVC	2700mm x 250mm	5mm	2.7m ²
Black Marble High Gloss	PVC	2700mm x 250mm	5mm	2.7m ²
Black Sparkle	PVC	2700mm x 250mm	5mm	2.7m ²
Black Wood High Gloss	PVC	2700mm x 250mm	5mm	2.7m ²
Gold	PVC	2700mm x 250mm	5mm	2.7m ²
Green Marble	PVC	2700mm x 250mm	5mm	2.7m ²
Grey Marble	PVC	2700mm x 250mm	5mm	2.7m ²
Pastel Grey Marble High Gloss	PVC	2700mm x 250mm	5mm	2.7m ²
Pearl White Marble High Gloss	PVC	2700mm x 250mm	5mm	2.7m ²
Pergamon Marble High Gloss	PVC	2700mm x 250mm	5mm	2.7m ²
Red Marble	PVC	2700mm x 250mm	5mm	2.7m ²
Soft Grey Marble High Gloss	PVC	2700mm x 250mm	5mm	2.7m ²
White Ash	PVC	2700mm x 250mm	5mm	2.7m ²
White High Gloss	PVC	2700mm x 250mm	5mm	2.7m ²
White Silver Embedded High Gloss	PVC	2700mm x 200mm	8mm	2.16m ²
White Silver Embedded High Gloss	PVC	4000mm x 200mm	8mm	3.2m ²
White Sparkle	PVC	2700mm x 250mm	5mm	2.7m ²
White Wave	PVC	2700mm x 250mm	5mm	2.7m ²
White Wood High Gloss	PVC	2700mm x 250mm	5mm	2.7m ²

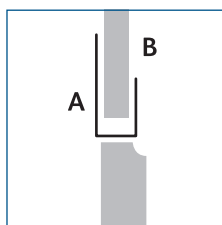
FIXING OPTIONS

BASIX PVC WATERPROOF PANELLING can be stapled, panel pinned, glued or screwed directly to a flat and even surface or on to timber battens if the surface is uneven. Fix battens approximately 30cms apart facing the opposite direction to the panels (horizontally where the panels are being installed vertically).

Nails, staples, screws or pins should be fixed through the panel groove base flaps so they are not visible when the tongue of the following panel is located into the groove of the previously installed panel. Where H joints are being fitted you may need to trim off the panel tongues, and/or groove base flaps first.

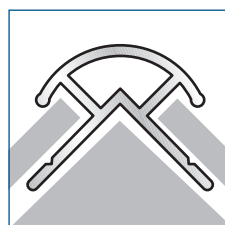


ACCESSORY GUIDE



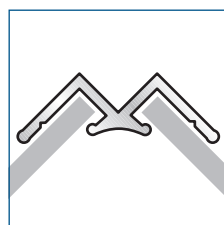
1 END U CAP

To start or end the assembly of the panels.



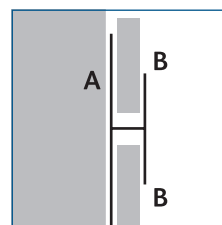
2 EXTERNAL CORNER

To make an outside corner.



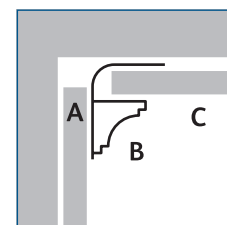
3 INTERNAL CORNER

To make an inside corner.



4 H JOINT AND DÉCOR STRIP

To make an H joint or décor strip between 2 panels.



5 SCOTIA

To finish the corner between wall and ceiling or floor and wall.

5mm trims available in 2.7m lengths	Bright Silver	White	Black
End U cap	•	•	•
External corner	•	•	•
Internal corner	•	•	•
H joint & décor strip	•	•	•
Scotia		•	•
8mm trims available in 2.7m and 4m lengths	Bright silver	White	Black
End U cap	•	•	
Internal corner	•	•	

CARE AND MAINTENANCE

BASIX PVC WATERPROOF PANELLING is more hygienic and easier to maintain than tiles. The non-porous surface provides excellent protection against bacteria and stains. BASIX PVC anti-bacterial cleaner kills germs and keeps hard surfaces clean without scratching.

Abrasive cleaners and bleaches MUST NOT be used on BASIX PVC panelling.





White and Chrome

INSTALLATION INSTRUCTIONS

A full set of installation instructions is available from your BASIX PVC WATERPROOF PANELLING supplier and are also included within the product packaging.

WARRANTY

BASIX PVC WATERPROOF PANELLING has a two year domestic use warranty against manufacturing defects. A copy of the warranty is available from your BASIX PVC supplier.

Installation of your BASIX PVC WATERPROOF PANELLING must be as per the instructions supplied, as incorrect installation will void the warranty.

Basix
PVC WATERPROOF PANELLING

FOR CEILINGS AND WALLS IN
SHOWERS, BATHROOMS AND WET ROOMS



www.abbuildingproducts.co.uk

Tel: 01264 359984