

High Performance Imaging Flaw Detector



Applications

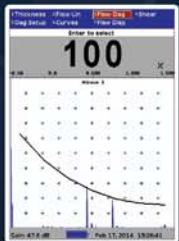
- Flaw detection and thickness gauging in most materials
- Corrosion mapping on pipes, tanks, vessels
- A-, B-, C-scan imaging
- Composite Inspection using thickness or amplitude flaw gates

Features

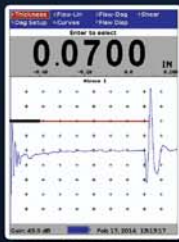
- All-in-one high-resolution, high-speed, flaw detector, thickness gauge and B-, C-scan imaging system
- Robust aluminum case with rubber end caps
- 5.7" VGA sun readable Color display
- Spike and square wave tuneable pulser, 5000Hz PRF
- Compatible with range of manual and automatic scanners for encoded B-scan and C-scan imaging



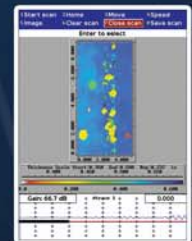
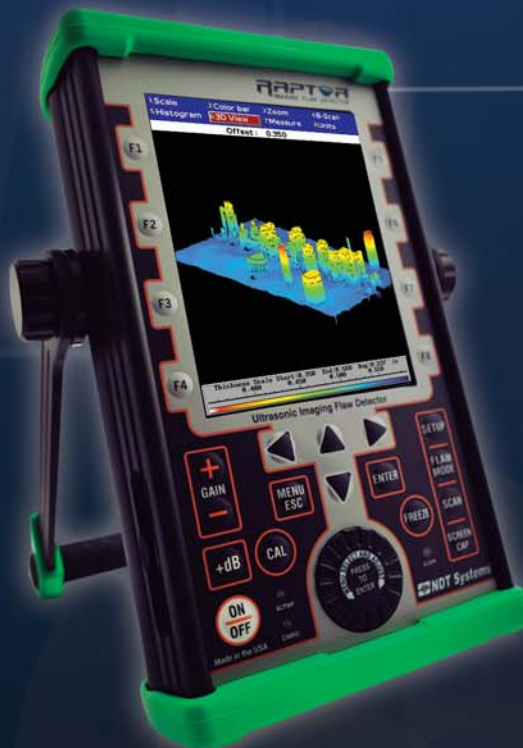
FLAW MODE



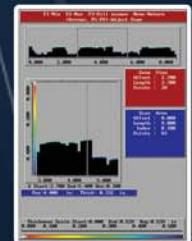
DAC CURVES



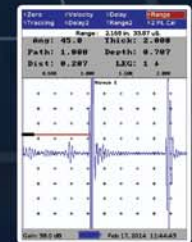
THICKNESS MODE



C-SCAN



B-SCAN



WELD TRIG

Introduction

Flaw detection is the process of identifying and sizing sub-surface defects in materials. One of the most common techniques to identify defects is ultrasonic inspection where sound waves, propagated through the material, are used to identify such anomalies. Flaw detection can be applied in almost any industry from composites and metals used in aerospace, to petrochemical oil and gas pipelines, storage tanks and power generation including nuclear power. The most common anomalies include cracks, voids and porosity in metals, ceramics and plastics in addition to delaminations and disbonds in composites.

Imaging is the ability to generate a full-field results image, or plan view mapping, of an area of interest. So called C-Scans are generated using manual or automated scanners, are easy to understand, serve as a digital archive and reduce inspection time dramatically

Three-in-One Instrument

The Raptor is an all-in-one high-resolution thickness gauge, flaw detector and imaging flaw detector capable of driving a range of manual and automatic scanners. The Raptor is unique with its robust aluminum construction, class leading PRF, powerful spike or tuneable square wave pulser and large sun readable screen. As a high-speed flaw detector or thickness gauge, the Raptor offers great versatility- capable of operating in a frequency range from 0.5MHz to 30Mhz it can run single, dual, contact, angle, delay line and immersion transducers. Dual gates, a 20 point DAC, peak echo hold, weld trig and many other features are all included as standard.

For the added capability of imaging, there is no need to upgrade or buy a complete new system, simply choose the right scanner for the application and the Raptor can generate C-scan images instantly. Data storage is through an SD card for easy transfer and a field-replaceable Li-ion battery gives 8-10 hours longevity.

Advanced Imaging Capability

The power of an image cannot be understated and can significantly speed up an inspection and help with interpretation. The Raptor is compatible with a range of manual and automatic scanners. The standard software can define the scan area, index resolution and speed and displays the resulting images live as they are generated.

A full suite of software functions is included for further analysis of the results, including B-scan sections, 3D images, statistical tools for defect sizing and much more. The scanner can also be positioned back to any point of interest. The display can run in Splitview screen mode with auto-tracking of the echo and a simultaneous view of the B- or C-scan and the live A-trace. The combined imaging system boasts an unmatched performance for a very low price and is a perfect way to enter the world of imaging and speed up inspection processes in hard to reach areas.

TECHNICAL SPECIFICATIONS			
Physical	Package Includes:	Standard package includes Raptor instrument, Pelican style shipping case, manual, battery, AC charger (110-240V) and Calibration Certificate	
	Dimensions	5.75in. x 9.50in. x 3.00in. (146mm x 241mm x 76mm)	
	Weight	5.6lb (2.54kg) including battery	
	Case Construction	Aluminum body, rubber end caps	
	Connector Type	BNC	
	Keypad type	Tactile membrane feedback keys, wheel control	
	Operating Temperature	15 °F to 122 °F (-10 °C to 50 °C)	
	Power Source	Single field-replaceable Li-ion Battery (8-10hrs) or AC mains	
	Display	Type	Sun readable Color VGA
		Size	60Hz , 640 x 480 pixels, 3.40in. x 4.55in. (86mm x 116mm)
Transducer	Type	Single, Dual, Angle, Contact, Delay, Immersion	
	Freq range	0.5MHz to 30.0MHz	
Measurements	Resolution	0.0001in. (0.0025mm)	
	Thickness Range	0.010in. to 400in. (0.254mm to 10,160mm)	
	Velocity Range	0.0490 to 0.9999in./μs (1.24 to 25.40mm/μs)	
	Display modes	RF, +HW, -HW, FW filled or outlined	
	DAC	20 points	
	Units Displayed	In. / mm	
Pulsar/ Receiver	Pulse Type	Spike or Square wave pulse	
	PRF	10Hz to 5000Hz, 50V to 450V	
	Pulse Width	20ns to 10,000ns in square wave mode	
	Gain	100dB	
	Damping	8 damping levels 25-375Ohms	
	Gates	Contact, IP-1st, 1st-2nd (permits thru coating, delay, bubbler, immersion), 2nd-3rd IP Blocking, IF Blocking, IF-1st, 1st-2nd, Echo Blk, POS or NEG gating	
Connectivity	Storage	Up to 2GB removable SD card	
	PC Software	Windows based RAPWIN software for imaging analysis	
Alarms	Type	Audible & visual alarm modes, thickness high, low or high/low. Amplitude +/- level	
Imaging	Display Type	Encoded B-scan, C-scan mapping	
	Compatible Scanners	Name:	Type:
		RCA-10, RCA-18.	Magnetic Wheeled X-Y Cantilever Scanner
		CrosScan	Automatic Standard Resolution X-Y Scanner
		TunnelScan	Automatic High-Resolution X-Y Scanner
		StringScan II	Manual X-Y Scanner
Armadillo	Hand-scanner (B-scan)		
OPTIONS	Transducers, ballistic case, battery external charger		

The specifications in this document are subject to change without notice.

Version: PI-Raptor-14v2

5542 Buckingham Drive, Huntington Beach, CA 92649 Phone 714-893-2438

Website: www.ndtstystems.com Email: info@ndtstystems.com

ADVANCED NDT LTD

www.advanced-ndt.co.uk

Advanced NDT Limited

Orchard House, Orchard Close

Severn Stoke, Worcester, WR8 9JJ, England

Tel: 01905 371460 Fax: 01905 371477

Web: www.advanced-ndt.co.uk

Email: sales@advanced-ndt.co.uk

NDT Systems Inc., a Nova Instruments company

N NOVA
INSTRUMENTS