

SHEET METAL



FASTENERS
for

specialised
fasteners for
the use with
sheet
metal



HARRISON
SILVERDALE LTD
INNOVATIVE FASTENERS

making the **right** connection



HARRISON SILVERDALE LTD INNOVATIVE FASTENERS

making the **right** connection

Harrison Silverdale has been supplying Industrial Fasteners since 1982. Over the years we have gained an enviable reputation for quality and reliability serving leading OEM's and distributors across Europe.

Our core products are fasteners for plastics and sheet metal. We also have a design service for special parts which is covered by our ISO 9001-2015 certification.

Our extensive range, engineering expertise and product knowledge means we are best placed to provide a cost effective supply solution for your fastener requirements.

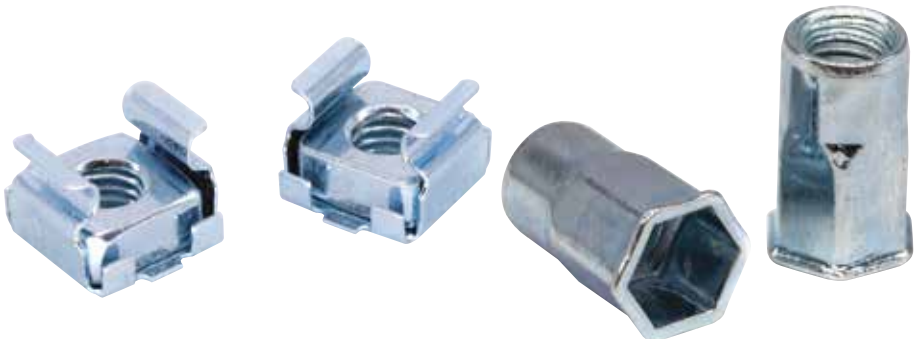
Call our sales office or visit our Web site to find out more.

+44 (0) 1246 296 930 www.harrisonsilverdale.com

Contents

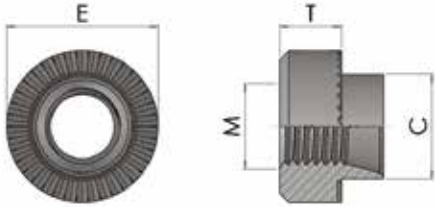
Fasteners for Sheet Metal

Series No	Description	Page
Rivet Bushes		
30101	Round Rivet Bush	4
30102	Mini Rivet Bush	5
30105	Rivet Bush Standoff	6
30106	Tank Rivet Bush	7
30107	Mini Rivet Bush Standoff	8
30108	Hexagon Rivet Bush	9
Rivet Nuts		
30201	Reduced Head Round	10
30204	Reduced Head Half Hex	11
30208	Countersunk Head	12
30210	Flat Head	13
Self Clinching Fasteners		
30302	Self Clinch Nut	14
30304	Flush Nut	15
30307	Floating Nut	16
30312	Clinch Stud	17
30314	Through Standoff	18
30315	Blind Standoff	19
30319	Panel Fastener	20
Cage Nuts		
40111	Cage Nut	21
Chimney & Lug Nuts		
40114/40118	Chimney & Lug Nuts	22



Round Rivet Bush

Series: 30101 Type: RSH



Information is for guidance only and subject to change.

Part No.	Thread M	Hole Size +0.5/-0	Dia E +/-0.15	Body T +/-0.13	Skirt C +0-0.13
M25??RSH	M2.5	5.54	7.92	3.17	5.54
M3??RSH	M3	5.54	7.92	3.17	5.54
M35??RSH	M3.5	6.73	9.52	3.17	6.73
M4??RSH	M4	6.73	9.52	3.17	6.73
M5??RSH	M5	7.92	11.10	3.81	7.92
M6??RSH	M6	9.52	12.7	5.08	9.52
M8??RSH	M8	12.70	15.9	6.35	12.70
M10??RSH	M10	15.87	19.05	7.62	15.87
M12??RSH	M12	19.05	25.40	10.16	19.05

SWG/MM	M2.5	M3	M3.5	M4	M5	M6	M8	M10	M12
8G/4.0									
10G/3.0									
12G/2.5									
14G/2.0									
16G/1.6									
18G/1.2									
20G/1.0									

Legend	
	Usually Available From Stock
	Non-preferred (Possible Lead Times)
	Special Order Only

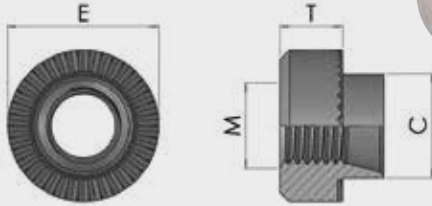
Round Rivet Bushes provide a strong female thread in sheet metal. The spigot is placed through a pre-punched hole and riveted on the reverse side, the serrations under the head provide excellent torque resistance. Various spigot lengths are available for different sheet thicknesses.

Material & Finishes: Steel Self Colour (Code 2)
Steel Trivalent Zinc (Code 26)
303 Stainless Steel (Code SS)

To Specify Use: Series No/ Part No/ Gauge/ Finish Code
(eg 30101M320RSH26)

Mini Rivet Bushes

Series: 30102 Type: MRB



Information is for guidance only and subject to change.

Part No.	Thread M	Hole Size +0.5/-0	Dia E +/-0.15	Body T +/-0.13	Skirt C +/-0.13
M25??RSH	M2.5	4.19	5.50	2.80	4.19
M3??RSH	M3	4.19	5.50	2.80	4.19
M35??RSH	M3.5	5.41	7.00	3.20	5.41
M4??RSH	M4	5.41	7.00	3.20	5.41
M5??RSH	M5	6.40	8.50	3.80	6.40
M6??RSH	M6	7.70	10.00	5.10	7.70
M8??RSH	M8	9.70	12.00	6.50	9.70

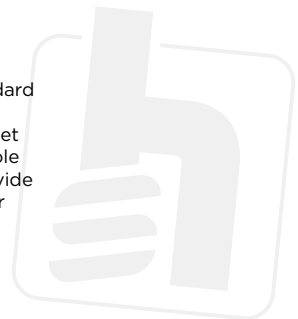
SWG/MM	M2.5	M3	M3.5	M4	M5	M6	M8
10G/3.0							
12G/2.5							
14G/2.0							
16G/1.6							
18G/1.2							
20G/1.0							
20G/0.8							

Legend	
	Usually Available From Stock
	Non-preferred (Possible Lead Times)
	Special Order Only

Mini Rivet Bushes have the same features as the 30101 series standard parts but with a smaller body to allow them to be placed closer to the edge of the panel. They provide a strong female thread on sheet metal applications. The spigot is placed through a pre-punched hole and riveted on the reverse side, the serrations under the head provide excellent torque resistance. Various spigot lengths are available for different sheet thicknesses.

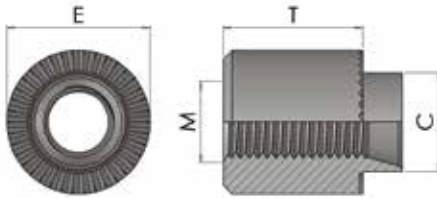
Material & Finishes: Steel Self Colour (Code 2)
Steel Trivalent Zinc (Code 26)
303 Stainless Steel (Code SS)

To Specify Use: Series Code/ Part No/ Gauge Size/ Finish Code (eg 30102 M320RSH26)



Rivet Bush Standoffs

Series: 30105 Type: SOFF



Information is for guidance only and subject to change.

Part No.	Thread M	Hole Size +0.5/-0	Sheet Thickness	Sheet Gauge	Dia E +/-0.13	Body T +/-0.13	Skirt C +0/-0.13
M25??SH	M2.5	5.54	0.7/4.0	22-08SWG	7.92	AS REQUIRED	5.54
M3??RSH	M3	5.54	0.7/4.0	22-08SWG	7.92	AS REQUIRED	5.54
M35??RSH	M3.5	6.73	0.7/4.0	22-08SWG	9.52	AS REQUIRED	6.73
M4??RSH	M4	6.73	0.7/4.0	22-08SWG	9.52	AS REQUIRED	6.73
M5??RSH	M5	7.92	0.7/4.0	22-08SWG	11.10	AS REQUIRED	7.92
M6??RSH	M6	9.52	0.7/4.0	22-08SWG	12.70	AS REQUIRED	9.52
M8??RSH	M8	12.70	0.7/4.0	22-08SWG	15.87	AS REQUIRED	12.70
M10??RSH	M10	15.87	0.7/4.0	22-08SWG	19.05	AS REQUIRED	15.87
M12??RSH	M12	19.05	0.7/4.0	22-08SWG	25.40	AS REQUIRED	19.05

Round Rivet Bush Standoffs work the same as the 30101 series but have longer bodies for mounting components at a specific distance from the panel. The spigot is placed through a prepunched hole and riveted on the reverse side, the serrations under the head provide excellent torque resistance. Various spigot lengths are available for different sheet thicknesses.

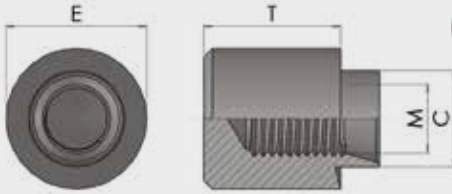
Material & Finishes: Steel Self Colour (Code 2)
Steel Trivalent Zinc (Code 26)
303 Stainless Steel (Code SS)

To Specify Use: Series No/ Part No/ Gauge/ Length/ Finish Code (eg 30105 M32010RSH26)

THESE PARTS ARE SPECIAL ORDER SUBJECT TO MINIMUM ORDER QUANTITY

Tank Rivet Bushes

Series: 30106 Type: RPL



Information is for guidance only and subject to change.

Part No.	Thread M	Hole Size +0.5/-0	Dia E +/-0.15	Body T +/-0.13	Skirt C +0/-0.13
M3??RPL	M3	5.54	7.92	8.61	5.54
M35??RPL	M3.5	6.73	9.52	8.97	6.73
M4??RPL	M4	6.73	9.52	8.97	6.73
M5??RPL	M5	7.92	11.10	9.32	7.92
M6??RPL	M6	9.52	12.70	10.57	9.52
M8??RPL	M8	12.70	15.87	11.89	12.70
M10??RPL	M10	15.87	19.05	16.50	15.87
M12??RPL	M12	19.05	25.40	19.05	19.05

SWG/MM	M3	M3.5	M4	M5	M6	M8	M10	M12
10G/3.0	■	■	■	■	■	■	■	■
12G/2.5	■	■	■	■	■	■	■	■
14G/2.0	■	■	■	■	■	■	■	■
16G/1.6	■	■	■	■	■	■	■	■
18G/1.2	■	■	■	■	■	■	■	■
20G/1.0	■	■	■	■	■	■	■	■

Legend	
■	Usually Available From Stock
■	Non-preferred (Possible Lead Times)
■	Special Order Only

Tank Bushes are rivet bushes with sealed or closed ends for use in tanks or other applications where a sealed thread is required. The plain undercut means a water tight seal is formed when the part is riveted into the sheet metal.

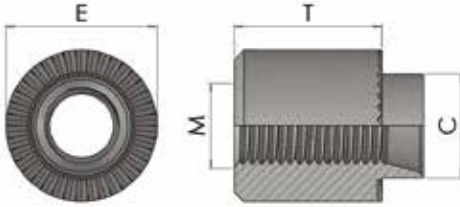
Material & Finishes: Steel Self Colour (Code 2)
Steel Trivalent Zinc (Code 26)
303 Stainless Steel (Code SS)

To Specify Use: Series Code/ Part No/ Gauge Size/ Finish Code
(eg 30106 M616RPL)



Mini Rivet Bush Standoff

Series: 30107 Type: MSOF



Information is for guidance only and subject to change.

Part No.	Thread M	Hole Size +0.5/-0	Sheet Thickness	Sheet Gauge	Dia E +/-0.13	Body T +/-0.13	Skirt C +0/-0.13
M25??RSH	M2.5	4.19	0.7/4.0	22-08SWG	6.50	AS REQUIRED	4.19
M3??RSH	M3	4.19	0.7/4.0	22-08SWG	5.50	AS REQUIRED	4.19
M35??RSH	M3.5	5.41	0.7/4.0	22-08SWG	7.00	AS REQUIRED	5.41
M4??RSH	M4	5.41	0.7/4.0	22-08SWG	7.00	AS REQUIRED	5.41
M5??RSH	M5	6.40	0.7/4.0	22-08SWG	8.50	AS REQUIRED	6.40
M6??RSH	M6	7.70	0.7/4.0	22-08SWG	10.00	AS REQUIRED	7.70
M8??RSH	M8	9.70	0.7/4.0	22-08SWG	12.00	AS REQUIRED	9.70
M10??RSH	M10	12.70	0.7/4.0	22-08SWG	16.00	AS REQUIRED	12.70
M12??RSH	M12	15.87	0.7/4.0	22-08SWG	19.00	AS REQUIRED	15.87

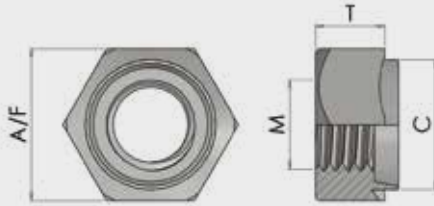
Mini Rivet Bush Standoffs are similar to the 30107 series but are available in longer body lengths allowing components to be secured at a specified distance from the panel. The smaller body allows them to be placed closer to the edge of the panel. The spigot is placed through a prepunched hole and riveted on the reverse side, the serrations under the head provide excellent torque resistance. Various spigot lengths are available for different sheet thicknesses.

Material & Finishes: Steel Self Colour (Code 2)
Steel Trivalent Zinc (Code 26)
303 Stainless Steel (Code SS)

To Specify Use: Series Code/Part No/Gauge Size/Length/Finish Code (eg 30107 M320RSH26)

Hexagon Rivet Bushes

Series: 30108 Type: HEX



Information is for guidance only and subject to change.

Part No.	Thread M	Hole Size +0.5/-0	A/F +/-0.15	Body T +/-0.13	Skirt C +0/-0.13
M25??HEX	M2.5	5.54	7.92	3.17	5.54
M3??HEX	M3	5.54	7.92	3.17	5.54
M35??HEX	M3.5	6.73	7.92	3.17	6.73
M4??HEX	M4	6.73	7.92	3.17	6.73
M5??HEX	M5	7.92	9.52	3.81	7.92
M6??HEX	M6	9.52	11.10	5.08	9.52
M8??HEX	M8	12.70	14.27	6.35	12.70
M10??HEX	M10	15.87	19.05	7.62	15.87
M12??HEX	M12	19.05	22.22	10.16	19.05

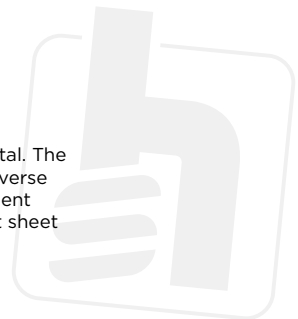
SWG/MM	M2.5	M3	M3.5	M4	M5	M6	M8	M10	M12
8G/4.0								Special Order Only	Special Order Only
10G/3.0		Non-preferred	Special Order Only	Non-preferred	Usually Available From Stock	Usually Available From Stock	Usually Available From Stock	Usually Available From Stock	Usually Available From Stock
12G/2.5		Usually Available From Stock	Special Order Only	Non-preferred	Usually Available From Stock	Usually Available From Stock	Usually Available From Stock	Usually Available From Stock	Usually Available From Stock
14G/2.0		Usually Available From Stock	Special Order Only	Usually Available From Stock	Usually Available From Stock	Usually Available From Stock	Usually Available From Stock	Usually Available From Stock	Usually Available From Stock
16G/1.6	Usually Available From Stock	Usually Available From Stock	Special Order Only	Usually Available From Stock	Usually Available From Stock	Usually Available From Stock	Usually Available From Stock	Usually Available From Stock	Non-preferred
18G/1.2		Usually Available From Stock	Special Order Only	Usually Available From Stock	Usually Available From Stock	Usually Available From Stock	Usually Available From Stock	Special Order Only	Special Order Only
20G/1.0		Usually Available From Stock	Special Order Only	Usually Available From Stock	Usually Available From Stock	Non-preferred	Non-preferred	Special Order Only	Special Order Only

Legend	
	Usually Available From Stock
	Non-preferred (Possible Lead Times)
	Special Order Only

Hexagon Rivet Bushes provide a strong female thread in sheet metal. The spigot is placed through a pre-punched hole and riveted on the reverse side, the corners of the hex bar bite into the sheet providing excellent torque resistance. Various spigot lengths are available for different sheet thicknesses.

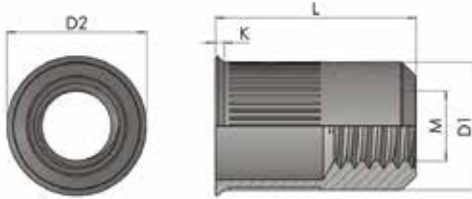
Material & Finishes: Steel Self Colour (Code 2)
Steel Trivalent Zinc (Code 26)
303 Stainless Steel (Code SS)

To Specify Use: Series No/ Part No/ Material Size/ Finish Code (eg 30108 M416 HEX26)



Rivet Nut Reduced Head Round

Series: 30201 Type: RRE RRI



Metric Hole

Information is for guidance only and subject to change.

Part No	Thread M	Grip Range	Hole Size	D1	D2	K	L
RRE03-1	M3	0.5-2.0	5.1	4.9	6.0	0.5	9.0
RRE04-1	M4	0.5-2.5	6.1	5.9	6.7	0.5	11.3
RRE04-2	M4	2.0-4.0	6.1	5.9	7.0	0.5	13.0
RRE05-1	M5	0.5-3.0	7.1	6.9	8.0	0.5	12.0
RRE05-2	M5	2.0-4.0	7.1	6.9	8.0	0.5	13.0
RRE06-1	M6	0.5-3.0	9.1	8.9	10.0	0.6	14.0
RRE06-2	M6	2.5-4.5	9.1	8.9	10.0	0.6	16.0
RRE08-1	M8	0.5-3.8	11.1	10.9	12.0	0.6	17.3
RRE08-2	M8	3.0-5.0	11.1	10.9	12.0	0.6	18.5
RRE10-1	M10	0.7-3.5	13.1	12.9	13.0	0.7	20.0
RRE10-2	M10	3.5-6.0	13.1	12.9	14.0	0.8	21.0
RRE12-1	M12	1.0-3.5	16.1	15.9	17.0	1.0	24.2

Imperial Hole

Part No	Thread M	Grip Range	Hole Size	D1	D2	K	L
RRI03	M3	0.5-1.5	4.8	4.7	5.3	0.4	9.0
RRI04	M4	0.5-2.0	6.4	6.3	7.1	0.5	10.5
RRI05	M5	0.5-3.0	7.2	7.1	8.1	0.5	12.0
RRI06	M6	0.5-3.5	9.6	9.5	10.3	0.6	15.0
RRI08	M8	0.7-3.8	10.6	10.5	11.5	0.6	16.0

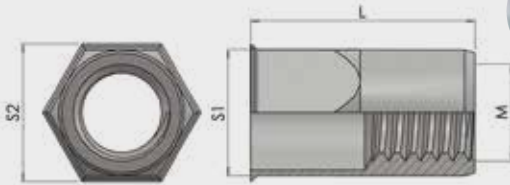
Reduced Head Rivet Nuts provide a strong reliable fixing with an almost flush low profile head. The serrated body offers high resistance to torque especially in softer materials. Available in metric and imperial hole sizes.

Material & Finishes: Steel Cr3 Zinc

To Specify Use: Series No/ Part No (eg 30201 RRE05-1)

Rivet Nut Reduced Head Half Hex Hole

Series: 30204 Type:
RHHE & RHHI



Information is for guidance only and subject to change.

Metric Hole

Part No	Thread M	Grip Range	Hole Size	S1	S2	K	L
RHHE04	M4	0.4-2.5	6.1	5.9	6.8	0.4	10.5
RHHE05	M5	0.5-3.0	7.1	6.9	8.0	0.5	11.7
RHHE06	M6	0.5-3.0	9.1	8.9	10.0	0.5	14.0
RHHE08	M8	0.7-3.0	11.1	10.9	12.0	0.5	16.5
RHHE10	M10	0.8-3.5	13.1	13.0 1	14.0	0.8	20.0

Imperial Hole

Part No	Thread M	Grip Range	Hole Size	S1	S2	K	L
RHHI04	M4	0.5-2.5	6.4	6.3	7.0	0.4	10.5
RHHI05	M5	0.5-3.0	7.2	7.1	8.0	0.5	12.0
RHHI06	M6	0.5-3.0	9.6	9.5	10.6	0.5	14.5
RHHI08	M8	0.7-3.2	10.7	10.5	11.5	0.6	16.0

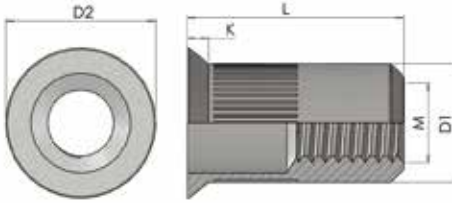
Half Hex Rivet Nuts combine excellent torque resistance and fast assembly due to the round front end which eliminates the need to orientate the hex flats. The reduced head provides an almost flush surface in a punched hole.

Material & Finishes: Steel Cr3 Zinc
Stainless Steel A2 (code SS)
To Specify Use: Series No/ Part No (eg 30204 RHHE05)



Rivet Nut Countersunk Head Round

Series: 30208 Type: CS



Information is for guidance only and subject to change.

Part No	Thread M	Grip Range	Hole Size	D1	D2	K	L
CS03-1	M3	1.5-3.5	5.1	4.9	7.5	1.5	11.5
CS04-1	M4	1.5-3.5	6.1	5.9	8.5	1.5	12.0
CS05-1	M5	1.5-4.0	7.1	6.9	9.5	1.5	13.0
CS06-1	M6	1.5-4.0	9.1	8.9	11.5	1.5	15.5
CS08-1	M8	1.7-4.5	11.1	10.9	13.5	1.5	18.5
CS10-1	M10	2.0-4.5	12.1	11.9	14.5	1.7	21.0

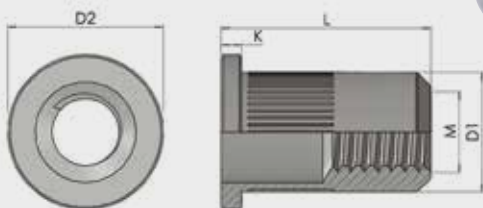
Countersunk Rivet Nuts provide a stronger flush head when used with countersunk holes. The knurled body provides extra torque resistance.

Material & Finishes: Steel Cr3 Zinc
Stainless Steel A2 (code SS)

To Specify Use: Series No/ Part No (eg 30204 RHHE05-1)

Rivet Nut Flat Head Round

Series: 30210 Type: FR



Information is for guidance only and subject to change.

Part No	Thread M	Grip Range	Hole Size	D1	D2	K	L
FR03-1	M3	0.25-2.0	5.1	4.9	7.5	1.0	8.5
FR04-1	M4	0.5-3.0	6.1	5.9	9.0	1.0	9.5
FR04-2	M4	3.0-4.5	6.1	5.9	9.0	1.0	12.3
FR05-1	M5	0.5-3.0	7.1	6.9	10.0	1.0	12.0
FR05-2	M5	3.0-5.5	7.1	6.9	10.0	1.0	15.0
FR06-1	M6	0.5-3.0	9.1	8.9	13.0	1.5	14.5
FR06-2	M6	3.0-5.5	9.1	8.9	13.0	1.5	16.5
FR08-1	M8	0.5-3.0	11.1	10.9	16.0	1.5	16.5
FR08-2	M8	3.0-5.5	11.1	10.9	16.0	1.5	18.5
FR10-1	M10	1.0-3.5	13.1	12.9	19.0	1.7	19.5
FR10-2	M10	2.4-4.0	13.1	12.9	19.0	1.7	19.5
FR10-3	M10	3.5-6.0	13.1	12.9	19.0	1.7	21.5
FR12-1	M12	1.0-4.0	16.1	15.9	23.0	2.0	25.0

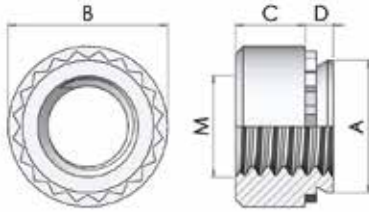
Flat Head Rivet Nuts have a large flange to improve pull out resistance when under heavy loads. The knurled body provides extra torque resistance.

Material & Finishes: Steel Cr3 Zinc
 Stainless Steel A2 (code SS)
 To Specify Use: Series No/ Part No (eg 30210 FR05-1)



Self Clinch Nuts

Series: 30302 Type: CN



Information is for guidance only and subject to change.

Part No.	Thread M	Sheet Min E	Body Dia B	Body Length C	Lead Dia A	Shank Length D	Hole Size P	Min Dim X
M2-0	M2	0.8	6.30	1.50	4.22	0.76	4.25	5.0
M2-1	M2	1.0	6.30	1.50	4.22	0.97	4.25	5.0
M2-2	M2	1.4	6.30	1.50	4.22	1.37	4.25	5.0
M2.5-0	M2.5	0.8	6.30	1.50	4.22	0.76	4.25	5.0
M2.5-1	M2.5	1.0	6.30	1.50	4.22	0.97	4.25	5.0
M2.5-2	M2/5	1.4	6.30	1.50	4.22	1.37	4.25	5.0
M3-0	M3	0.8	6.30	1.50	4.22	0.76	4.25	5.0
M3-1	M3	1.0	6.30	1.50	4.22	0.97	4.25	5.0
M3-2	M3	1.4	6.30	1.50	4.22	1.37	4.25	5.0
M3 L-0	M3L	0.8	7.10	1.50	4.73	0.76	4.75	6.0
M3 L-1	M3L	1.0	7.10	1.50	4.73	0.97	4.75	6.0
M3 L-2	M3L	1.4	7.10	1.50	4.73	1.37	4.75	6.0
M3 5-0	M3.5	0.8	7.10	1.50	4.73	0.76	4.75	6.0
M3 5-1	M3.5	1.0	7.10	1.50	4.73	0.97	4.75	6.0
M3 5-2	M3.5	1.4	7.10	1.50	4.73	1.37	4.75	6.0
M4-0	M4	0.8	7.90	2.00	5.38	0.76	5.40	6.7
M4-1	M4	1.0	7.90	2.00	5.38	0.97	5.40	6.7
M4-2	M4	1.4	7.90	2.00	5.38	1.37	5.40	6.7
M5-0	M5	0.8	8.70	2.00	6.38	0.76	6.40	7.0
M5-1	M5	1.0	8.70	2.00	6.38	0.97	6.40	7.0
M5-2	M5	1.4	8.70	2.00	6.38	1.37	6.40	7.0
M6-1	M6	1.4	11.05	4.08	8.72	1.37	8.75	8.7
M6-2	M6	2.3	11.05	4.08	8.72	2.21	8.75	8.7
M8-1	M8	1.4	12.65	5.47	10.44	1.37	10.50	9.5
M8-2	M8	2.3	12.65	5.47	10.44	2.21	10.50	9.5
M10-1	M10	2.3	17.35	7.48	13.94	2.21	14.00	12.0
M10-2	M10	3.2	17.35	7.48	13.94	3.05	14.00	12.0
M10-3	M10	6.4	17.35	7.48	13.94	6.00	14.00	12.0

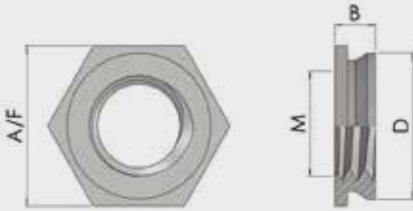
Self Clinch Nuts are a fast reliable method of providing captive female thread forms in sheet metal. The parts are squeezed into the sheet with a press whilst supporting the reverse side with an anvil. Typical applications include electrical enclosures used in the IT and telecom industries. They are for use in sheets of Rockwell Hardness of B-85 max.

Material: Heat Treated Steel or Stainless Steel

Finishes: Trivalent Zinc

Self Clinch Flush Nuts

Series: 30304 Type: FN



Information is for guidance only and subject to change.

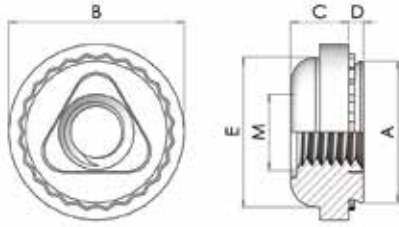
Part No.	Thread M	Min Sheet	Body A/F	Body Depth B	Lead Dia D	Hole Size
M 2-1	M2	1.50	4.76	1.5	4.34	4.4
M 2-2	M2	2.30	4.76	2.3	4.34	4.4
M 2.5-1	M2.5	1.50	4.76	1.5	4.34	4.4
M 2.5-2	M2.5	2.30	4.76	2.3	4.34	4.4
M 3-1	M3	1.50	4.76	1.5	4.34	4.4
M 3-2	M3	2.30	4.76	2.3	4.34	4.4
M3 L-1	M3	1.50	6.40	1.5	5.35	5.4
M3 L-2	M3	2.30	6.40	2.3	5.35	5.4
M3.5-1	M3.5	1.50	6.40	1.5	5.35	5.4
M3.5-2	M3.5	2.30	6.40	2.3	5.35	5.4
M4-1	M4	1.50	7.94	1.5	7.34	7.4
M4-2	M4	2.30	7.94	2.3	7.34	7.4
M5-1	M5	1.50	8.73	1.5	7.90	7.9
M5-2	M5	2.30	8.73	2.3	7.90	7.9
M6-3	M6	3.20	9.53	3.1	8.71	8.75
M6-4	M6	4.00	9.53	3.9	8.71	8.75
M6-5	M6	4.75	9.53	4.7	8.71	8.75

Hex Flush nuts offer the opportunity of strong thread forms in sheet metal and alloys whilst providing a completely flush finish both sides of the sheet. This means that components can be mounted directly to the sheet without allowances having to be made for protrusions. The hexagon head prevents torque out and provides high pull through resistance. The parts are squeezed into place using a press whilst supporting the reverse side. They are suitable for use in materials of Rockwell Hardness of B-70 or less.

Material & Finishes: 303 Stainless Steel
To Specify Use: Series No/ Part No/ SS (eg 30304 M5-1 SS)

Self Clinch Floating Nuts

Series: 30307 Type: FL



Information is for guidance only and subject to change.

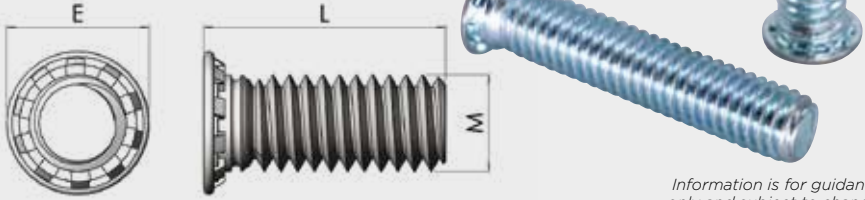
Part No.	Thread M	Min Sheet	Body Dia B	Body Depth C	Lead Dia A	Shell Dia E	Shank Length D	Hole Size P	Min Dim X
M3FL-1	M3	1.0	9.1	3.3	7.34	7.4	0.97	7.4	8.6
M3FL-2	M3	1.4	9.1	3.3	7.34	7.4	1.37	7.4	8.6
M4FL-1	M4	1.0	11.2	3.3	9.32	9.3	0.97	9.4	9.7
M4FL-2	M4	1.4	11.2	3.3	9.32	9.3	1.37	9.4	9.7
M5FL-1	M5	1.0	11.9	4.4	10.29	10.3	0.97	10.3	11.0
M5FL-1	M5	1.4	11.9	4.4	10.29	10.3	1.37	10.3	11.0
M6FL-2	M6	1.4	15.3	5.3	13.06	13.0	1.37	13.1	14.0
M3FLL-1	M3 LOC	1.0	9.1	4.8	7.34	7.4	0.97	7.4	8.6
M3FLL-1	M3 LOC	1.4	9.1	4.8	7.34	7.4	1.37	7.4	8.6
M4FLL-1	M4 LOC	1.0	11.2	5.3	9.32	9.3	0.97	9.4	9.7
M4FLL-2	M4 LOC	1.4	11.2	5.3	9.32	9.3	1.37	9.4	9.7
M5FLL-2	M5 LOC	1.0	11.9	6.9	10.29	10.3	0.97	10.3	11.0
M5FLL-2	M5 LOC	1.4	11.9	6.9	10.29	10.3	1.37	10.3	11.0
M6FLL-2	M6 LOC	1.4	15.3	7.9	13.06	13.0	1.37	13.1	14.05

Floating Clinch Nuts are a very useful fastener for reducing the problems caused in assembly of pre-fabricated boxes where tolerance build up or inaccuracies due to bends occur. Whilst the outer shell of the fastener is captive in the sheet there is a separate inner nut which moves within the outer shell without rotating. This allows a small amount of movement to allow for misalignment. Thread locking versions are also available. These products are suitable for use in materials of Rockwell Hardness of B -70 or less.

Material & Finishes: Steel Trivalent Zinc (Code 60)
 303 Stainless Steel Self Colour (Code SS)
 Thread Locking Version also available
 (code FLL)

Self Clinch Studs

Series: 30312 Type: CS



Information is for guidance only and subject to change.

Part No.	Thread M	Min Sheet	Head Dia E	Hole Size	Min Dim X	Max Clearance	Max Torque Nm
30312 M2	M2	1.0	3.5	1.96/2.03	4.8	2.21/2.69	0.20
30312 M2.5	M2.5	1.0	4.1	2.47/2.55	5.3	2.70/3.10	0.41
30312 M3	M3	1.0	4.6	2.97/3.05	5.5	3.33/3.58	0.84
30312 M3.5	M3.5	1.0	5.3	3.48/3.56	6.4	3.80/4.06	1.02
30312 M4	M4	1.0	5.9	3.96/4.04	7.0	4.27/4.52	1.92
30312 M5	M5	1.0	6.5	4.98/5.06	7.0	5.26/5.51	3.84
30312 M6	M6	1.5	8.2	5.97/6.05	8.0	6.25/6.50	8.02
30312 M8	M8	2.0	9.6	7.97/8.05	9.5	8.25/8.50	13.50

Thread	6	8	10	12	10	12	14	15	16	18	20	22	25	28	30	35	38	40	45	50	60	
M2																						
M2.5																						
M3																						
M3.5																						
M4																						
M5																						
M6																						
M8																						

Self Clinch Studs provide a strong male thread in sheet metal materials. They are squeezed into place using a press whilst supporting the reverse side. The clinching process is cleaner than traditional weld studs whilst having similar performance.

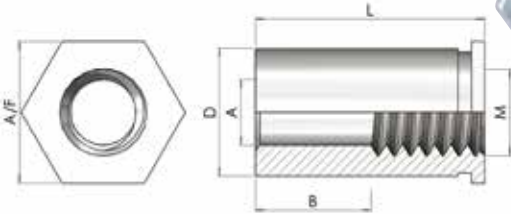
Legend	
 	Usually Available From Stock
 	Non-preferred (Possible Lead Times)
 	Special Order Only

Material & Finishes: Heat Treated Carbon Steel
 Trivalent Zinc (Code 60)
 304 Stainless Steel Self Colour (Code SS)
 316 Stainless Steel Self Colour (Code A4)

To Specify Use: Series No/ Part No/ Length/ Finish Code
 (eg 30312 M320 60)

Self Clinch Through Stand Off

Series: 30314 Type: COM



Information is for guidance only and subject to change.

Part No.	Thread M	Sheet Min E	Body Dia D	Head A/F	Hole Size	Bore A	X Min
02COM	M2	1.0	4.18	4.8	4.20	3.2	6.0
025COM	M2.5	1.0	4.18	4.8	4.20	3.2	6.0
03COM	M3	1.0	4.18	4.8	4.20	3.2	6.0
03COML	M3	1.0	5.39	6.4	5.40	4.0	7.0
04COM	M4	1.3	7.10	7.9	7.14	4.8	8.0
05COM	M5	1.3	7.10	7.9	7.14	5.2	8.0

Length L	3	4	5	6	8	10	12	14	15	16	18	20	22	25
Length B	N/A	N/A	N/A	N/A	N/A	4	4	4	4	8	8	8	11	11
02COM														
025COM														
03COM														
03COML														
04COM														
05COM														

Self Clinch Through Standoffs provide a strong female thread in sheet metal. They are designed to provide a flush finish on the reverse side and are available in various lengths to allow components to be mounted at the required stand off distance from the sheet. They are installed using a squeezing action with a press whilst supporting the reverse side. The through hole allows screws to be mounted from both sides.

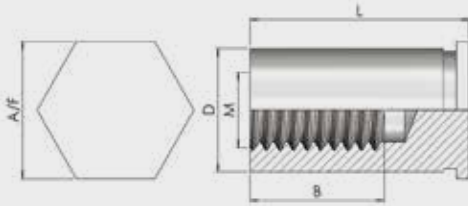
Legend	
	Usually Available From Stock
	Non-preferred (Possible Lead Times)
	Special Order Only

Material & Finishes: Heat Treated Carbon Steel Trivalent Zinc (Code60)
303 Stainless Steel Self Colour (Cose SS)

To Specify Use: Series No/ Part No/ Length/ Finish Code
eg 30314 03COM10 60

Self Clinch Blind Stand Off

Series: 30315 Type: CBM



Information is for guidance only and subject to change.

Part No.	Thread M	Sheet Min E	Body Dia D	Head A/F	Hole Size	X Min
02CBM	M2	1.0	4.18	4.8	4.2	6.0
025CBM	M2.5	1.0	4.18	4.8	4.2	6.0
03CBM	M3	1.0	4.18	4.8	4.2	6.0
03CBML	M3	1.0	5.39	6.4	5.4	7.0
04CBM	M4	1.3	7.10	7.9	7.14	8.0
05CBM	M5	1.3	7.10	7.9	7.14	8.0

Length L	3	4	5	6	8	10	12	14	15	16	18	20	22	25
Length B			2.8	3.2	4.0	4.0	5.0	6.5	6.5	6.5	9.5	9.5	9.5	9.5
02CBM			Available	Available	Available	Available	Available	Available	Available	Available	Available	Available	Available	Available
025CBM			Available	Available	Available	Available	Available	Available	Available	Available	Available	Available	Available	Available
03CBM			Available	Available	Available	Available	Available	Available	Available	Available	Available	Available	Available	Available
03CBML			Available	Available	Available	Available	Available	Available	Available	Available	Available	Available	Available	Available
04CBM			Available	Available	Available	Available	Available	Available	Available	Available	Available	Available	Available	Available
05CBM			Available	Available	Available	Available	Available	Available	Available	Available	Available	Available	Available	Available

Self Clinch Blind Standoffs provide a strong female thread in sheet metal. They are designed to provide a flush finish on the reverse side and are available in various lengths to allow components to be mounted at the required stand off distance from the sheet. They are installed using a squeezing action with a press whilst supporting the reverse side. The blind hole makes the part almost invisible on the reverse side of the panel.

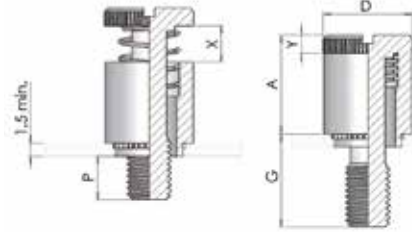
Legend	
	Usually Available From Stock
	Non-preferred (Possible Lead Times)
	Special Order Only

Material & Finishes: Heat Treated Carbon Steel Trivalent Zinc (Code 60)
303 Stainless Steel Self Colour (Code SS)

To Specify Use: Series No/ Part No/ Length/ Finish Code
eg 30315 03CBM10 60

Self Clinch Panel Fastener

Series: 30319 Type: SPFC



Information is for guidance only and subject to change.

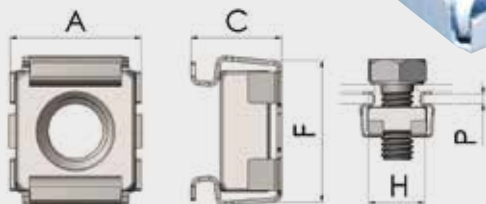
Part No.	Thread M	Mating Panel P	Dia D	Dim Y	Hole Size	Spigot Size	Length G	Body A	Body B	Dim X
SPFC M3-40	M3	0.0	7.9	1.9	6.75	6.7	6.4	9.1	7.2	4.8
SPFC M3-62	M3	3.2	7.9	1.9	6.75	6.7	9.5	9.1	7.2	4.8
SPFC M3-84	M3	6.4	7.9	1.9	6.75	6.7	12.7	9.1	7.2	4.8
SPFC M4-50	M4	0.0	9.5	2.15	7.79	7.9	7.9	11.4	9.3	6.4
SPFC M4-72	M4	3.2	9.5	2.15	7.79	7.9	11.1	11.4	9.3	6.4
SPFC M4-94	M4	6.4	9.5	2.15	7.79	7.9	14.3	11.4	9.3	6.4
SPFC M5-50	M5	0.0	10.3	2.15	8.75	8.7	7.9	11.4	9.3	6.4
SPFC M5-72	M5	3.2	10.3	2.15	8.75	8.7	11.1	11.4	9.3	6.4
SPFC M5-94	M5	6.4	10.3	2.15	8.75	8.7	14.3	11.4	9.3	6.4
SPFC M6-60	M6	0.0	11.9	2.54	10.50	10.5	9.5	14.6	12.0	7.9
SPFC M6-82	M6	3.2	11.9	2.54	10.50	10.5	12.7	14.6	12.0	7.9
SPFC M6-04	M6	6.4	11.9	2.54	10.50	10.5	15.9	14.6	12.0	7.9

Panel Fasteners are self clinching screw retainers for sheet metal. The body is squeezed into the sheet using a press, the screw is captive in the body so will not be lost and can be fastened to the mating part later in production. These parts are particularly useful in cabinets when regular access is required and lost screws cause problems.

Material & Finishes: Steel Nickel (Code MPFC)
 303 Stainless Steel (Code SPFC)
 To Specify Use: Series Code/ Part No (eg 30319 SPFC M3-40)

Cage Nuts

Series: 40111 Type: CN



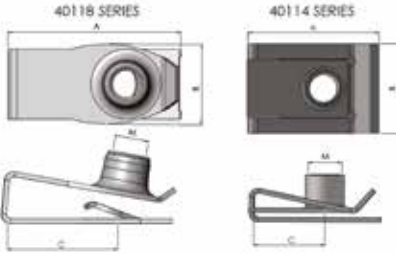
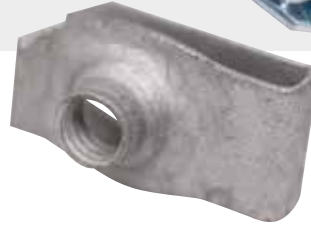
Information is for guidance only and subject to change.

Part No.	Thread M	Panel Range P	Dim A	Dim C	Hole Size H
M4 8340	M4	0.3-1.1	12.0	8.0	8.3
M4 8341	M4	1.2-1.6	12.0	8.5	8.3
M4 8342	M4	1.7-2.5	12.0	9.5	8.3
M4 9541	M4	0.7-1.6	13.2	8.7	9.5
M4 9542	M4	1.7-2.7	13.2	9.5	9.5
M5 9551	M5	0.7-1.6	13.2	8.7	9.5
M5 9552	M5	1.7-2.7	13.2	9.5	9.5
M5 9553	M5	2.8-3.5	13.2	10.2	9.5
M6 9561	M6	0.7-1.6	13.2	8.3	9.5
M6 9562	M6	1.7-2.7	13.2	9.3	9.5
M6 9563	M6	2.8-3.5	13.2	10.2	9.5
M8 12381	M8	1.0-1.7	16.0	10.4	12.3
M8 12382	M8	1.8-3.2	16.0	12.0	12.3
M8 12383	M8	3.3-4.7	16.0	13.5	12.3
M8 12384	M8	4.8-5.5	16.0	14.5	12.3
M10 12311	M10	1.0-1.7	16.0	10.4	12.3
M10 12312	M10	1.8-3.2	16.0	12.0	12.3
M10 12313	M10	3.3-4.7	16.0	13.5	12.3
M10 12314	M10	4.8-6.2	16.0	14.5	12.3
M12 14121	M12	1.0-1.7	20.0	13.5	14.0
M12 14122	M12	1.8-3.2	20.0	15.0	14.0
M12 14123	M12	3.3-4.7	20.0	16.5	14.0
M12 14124	M12	4.8-6.2	20.0	18.0	14.0

To Specify Use: Series Code/ Part No (eg 40111 M6 9562)
Also available in stainless steel.

Chimney & Lug Nuts

Series: 40114 - 40118



Information is for guidance only and subject to change.

Part No.	Thread M	A	B	C	Panel
40118 050019	M5	19	13	11.5	0.6-3.8
40118 060023	M6	23	14	13.5	0.8-4.0
40118 060023L	M6 LOCK	23	14	13.5	0.8-4.0
40118 080025	M8	24.5	16.5	14.5	0.8-4.0
40114 M4	M4	15	10	7.3	1.5-4.0
40114 M5	M5	20.5	14	10	0.5-4.0
40114 M6	M6	23.6	16	11	0.5-4.0
40114 M8	M8	24.3	17	13	0.5-4.0

Chimney and Lug Nuts offer a quick fastening solution for thin sheet materials. They clip over the panel edge or into a cut out profile to offer a strong female thread. Some sizes are available with a prevailing torque (self-locking) thread. The 40118 series are for heavier duty applications.

Material: Spring Steel C675

Other Products in our range



Threaded Inserts

Our range of inserts for plastics, wood, composites and alloys have many applications. These parts provide a strong female or male thread form in soft materials and can be installed using a variety of methods to suit your requirements.



Spring Steel & Plastic Fasteners

Perfect for working with thin panels & trim in all materials, providing a quick and cost effective fastening solution. Our range of threaded and nonthreaded fasteners have numerous applications.



Compression Limiters

Compression Limiters are plain bushes used to reinforce bosses or mouldings when under high clamping loads. They can be over moulded or inserted after the moulding process. The combination of knurls and grooves in the body provide good retention in the moulding. They are manufactured in a range of materials and finishes to best suit the application and are usually made to order due to the variety of lengths and diameters.



Turned & Machined Components

Special turned parts can be made to your drawing or alternatively we can help develop new parts with the help of our in house design service which is covered by our ISO 9001:2015 quality approval. We work in all materials and manufacture small or large batch sizes. Our modern equipment produces the highest quality components at very competitive prices.

www.harrisonsilverdale.com



HARRISON
SILVERDALE LTD
INNOVATIVE FASTENERS

Harrison Silverdale Ltd

Unit 1, Traso Business Park
Callywhite Lane, Dronfield
Sheffield S18 2XR
United Kingdom



Certificate No. 01119

T: +44 (0) 1246 296 930

F: + 44 (0) 1246 296 940

fasteners@harrisonsilverdale.co.uk

making the **right** connection