

Technology that inspires

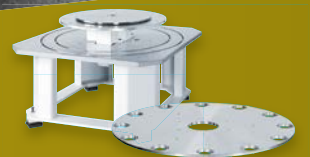


# PRODUCT RANGE

Mechanics | Software | Electronics



Excerpt of the WEISS Product Range  
**CUSTOMER SPECIFIC SOLUTIONS**



4

I would like to commission my installation quickly and efficiently



3

I require machine frames, mounting bases or custom equipment



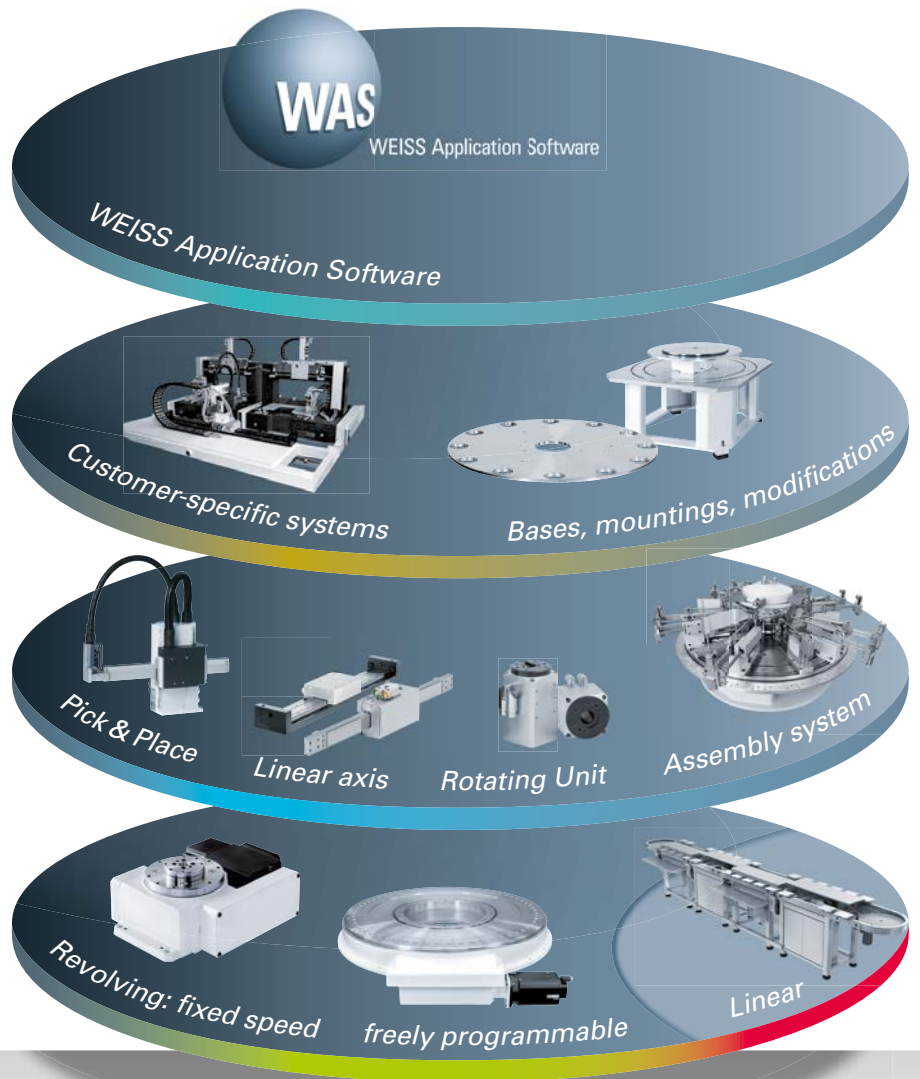
2

I require handling components



1

My transport is...



## Four steps to perfect automation



### Fixed position rotary indexing tables



TC



TR

TC rotary indexing table  
TR rotary indexing ring

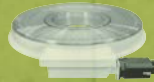
### User-programmable rotary indexing tables



NC



NR



CR



TO



TW

NC rotary indexing table NR rotary indexing ring  
CR/TH heavy duty ring TO torque rotary indexing table  
TW rotary indexing table

### Linear assembly system



LS

LS 280

### Handling modules



HP



HL

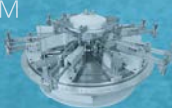
HG/HN



ST/SW



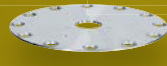
SH



PM

HP Pick & Place HL Linear axis  
HG/HN Linear axes ST/SW rotary unit  
SH Lifting-rotating unit PM Pick-o-Mat

### Customer specific solutions



Plate



SK

SR/SK indexing machine bases  
Additional indexing plate



### WAS-Software

WEISS Application Software (WAS)

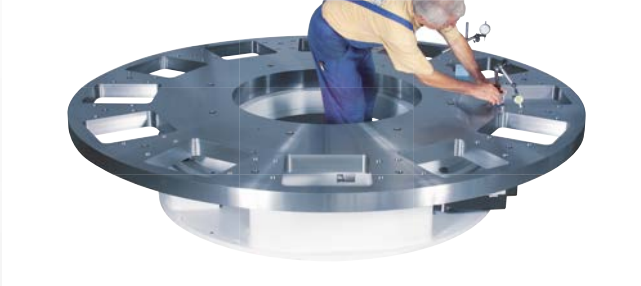


Clear lines, attractive design

## Customer-specific solutions: A system of matched components

Manufactured in-house, we can offer you your own individual basic machine – customised with regard to design, precision, dimensions and even colour. And of course all equipment comes with its own test certificate.

- **Guaranteed quality**  
*No nasty surprises. We produce and supply your machine from a single source as per your own specifications in terms of design, precision, dimensions and even colour - all guaranteed and documented. You receive a test report with every machine.*
- **Fastest delivery time**  
*No need to reinvent the wheel. Implement your solution perfectly and purposefully based on optimum standards! We will supply your machine within four to eight weeks.*
- **Cost savings**  
*Reduced engineering costs, no enquiries, no stress, no manufacture or assembly times. And our series production lowers costs. See for yourself!*
- **Surface treatment**  
*We are happy to offer all components in whatever surface finish you desire:*
  - Anodised aluminium components
  - Chemically nickel-plated or burnished steel
  - Painted surfaces can alternatively be powder-coated



Final inspection and test protocol

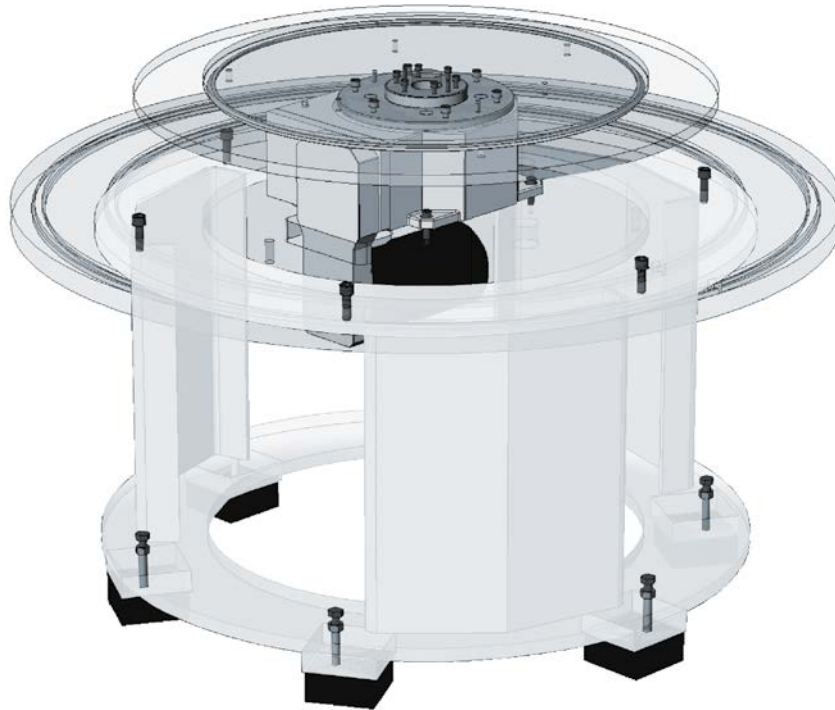
<p><b>Basic idea</b> ▶</p>	<p><b>Indexing machine bases</b> ▶      <b>Stationary and rotary plates</b></p>	
		
<p><b>Examples</b> ▶</p>	<p><b>Custom equipment</b></p>	
<p><i>Individual, customised designs</i></p>		

Make the most of our expertise in plate and base plate manufacturing, and compile your own personalised system solution on the basis of our models. We can of course offer you everything you need - from special machining, right up to complete system solutions. This saves you a great deal of time, which you can then use for your specific machine problem.



## SR Series

---



### Special Features:

- Standard sizes: BG 100R, BG 200R, BG 300R, BG 400R, BG 500R
- 2 - 4 standard ribbed legs depending on diameter
- Customised diameters / designs available on request

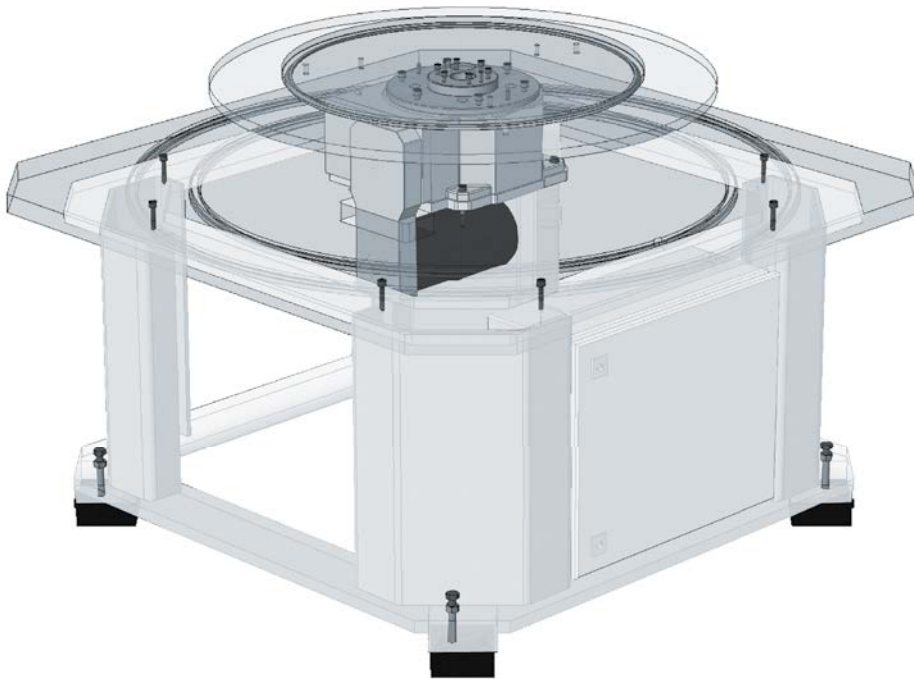
### Rotary Indexing Tables

- *Select the rotary indexing table suitable for your application*
- *Series TC/NC, TR/NR, TW, TO, CR all are available in various model sizes*
- *The overall height of your machine will be determined by the height of the indexing unit used and the length of the support legs.*
- *Laser measurement of the indexing precision possible on request*

### Additional Rotating Dial Plates

- *Our aluminium dial plates are manufactured in a controlled temperature environment from at least 3 month aged material*
- *Dimensions, manufacturing and surface treatments according to your specification*
- *Supplied with a quality certificate*

# SK Series



## Special Features:

- 3 standard sizes: BG 100K, BG 200K, BG 300K
- Integrated switch cabinets available
- Any edge dimensions possible
- Customised sizes available upon request

### Base Plates

- *Round, square or rectangular*
- *Dimensions, material and processing according to your specification*
- *Machining according to your drawing*
- *T-slots possible*
- *Cable ducts standard*

### Basic Frames

- *Round and square standard sizes*
- *Height adjustment possible*
- *Customised design upon request*
- *High quality rigid fabricated construction*
- *Switch cabinets can only be fitted into square bases*
- *Height-adjustable and shock-absorbing feet*

### Additional Stationary Top Plates

- *With integrated lip seal between stationary and rotating indexing plate*
- *In aluminium or steel, manufactured according to your drawing*
- *T-slots possible*

# SR Series

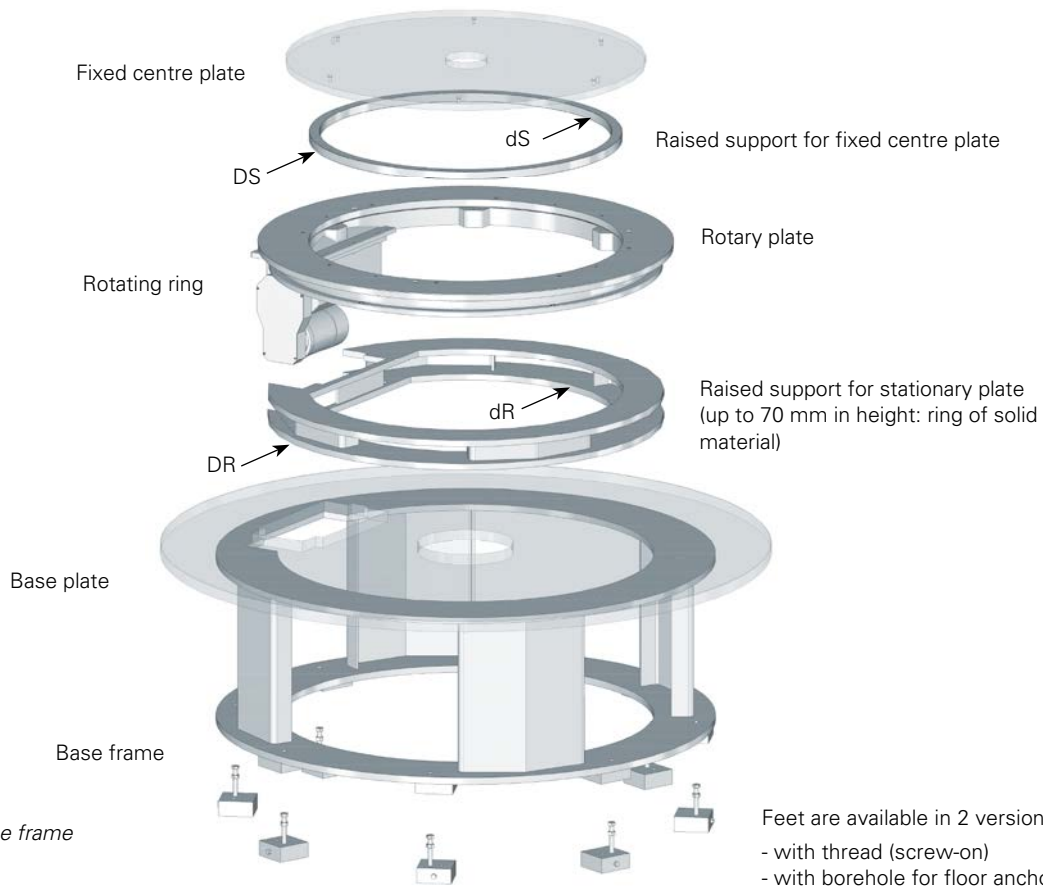
Table of dimensions for standard version (Attention! New type designation)

Type	Recommended rotary table type	ØA (Standard)	B	B*	H	ØI	ØJ	ØK
SR 100B	TC/NC 150–320T, TW 150–300A TO 150–220C, CR 300C	1300	35	40	575	960	615	960
SR 200B	TC/NC 220–320T, TC 500T, CR 400C TR/NR 750, PM 1100, TO 750C, TW 200–300A	1500	35	40	485	1200	815	1200
SR 300B	TC/NC 320T, TC 500T, TC 700T, TW 300 TR/NR 750, TR/NR 1100, PM 1500, CR 400–700C	1800	35	40	615	1350	967	1350
SR 400B	TC 500–700T, TR/NR 1100, TR/NR 1500 CR 700–1000C	2200	35	40	690	1800	1357	1800
SR 500B	TR/NR 1500, TR/NR 2200, CR 1000–1300C	2500	35	40	656	2200	1700	2200

General tolerances in conformity with DIN ISO 2768-m. Special tolerances upon request.

\* with T-slots

**Notes:** For the permissible loads of the stationary or rotary indexing plates, please refer to the “Rotary indexing table” chapter. Special machining according your drawing.

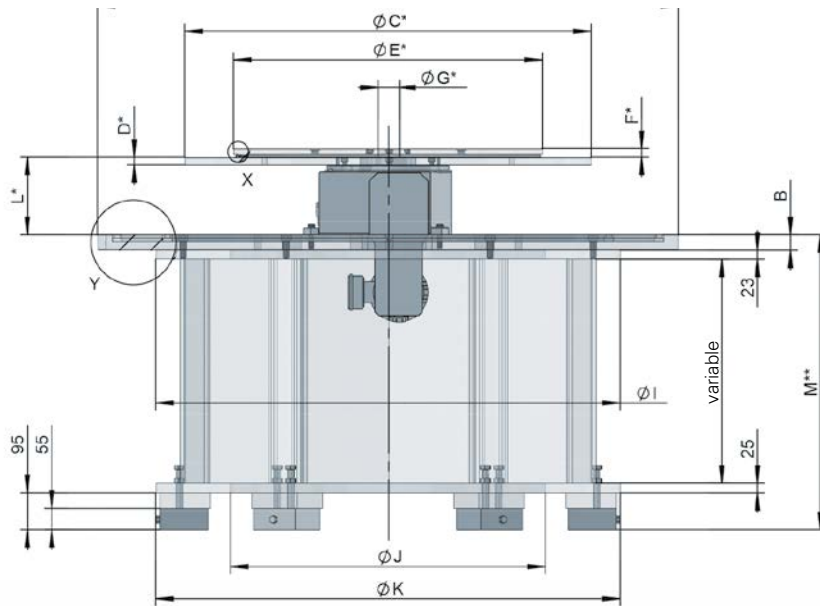


## Optional raised support dimensions for indexing rings TR/NR

Table type	Raised support for fixed centre plate			Raised support for rotating ring		
	ØDS	ØdS	Height	ØDR	ØdR	Height
TR/NR 750	485	410	21.5	770	440	variable
TR/NR 1100	795	720	32	1100	740	variable
TR/NR 1500	1130	1055	32	1420	1080	variable
TR/NR 2200	1745	1655	37	2200	1660	variable

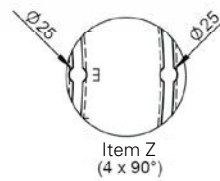
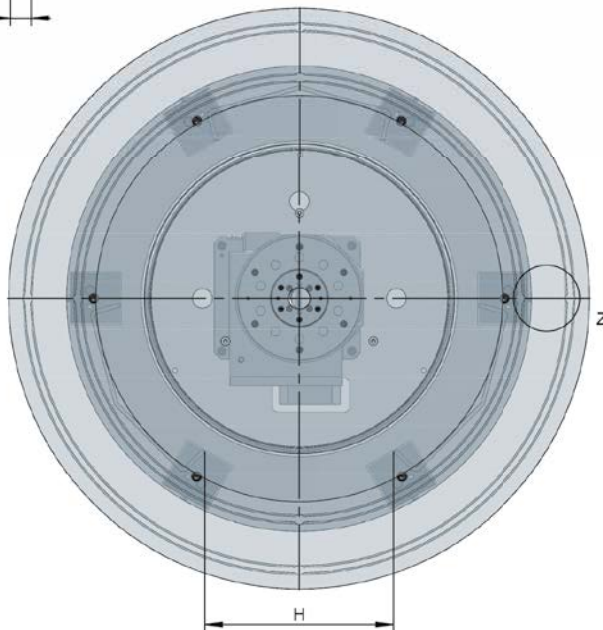
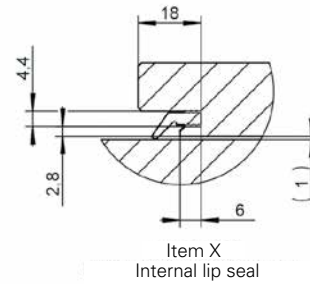
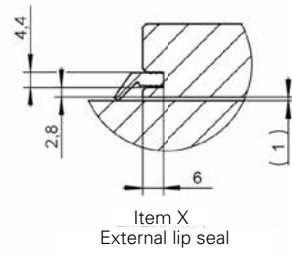
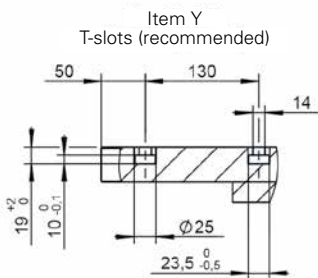


# SR Series Dimensions



Please download the selected machine base from [www.weiss-gmbh.de](http://www.weiss-gmbh.de) (in 2D or 3D) directly into your CAD drawing. This will ensure you are using the latest model.

\*\* Distance M varies according to the ridge height and can be changed by  $\pm 3$  mm by adjusting the feet



\* For recommended dimensions and diameters, see "Rotary indexing tables"

## SK Series

Table of dimensions for standard version (Attention! New type designation)

Type	Recommended rotary table type	ØA (Standard)	B	B*	H	ØI	ØJ	ØK
SK 100B	TC/NC 150–320T, TW 150–300A TO 150–220C, CR 300C	1300	35	40	410	1000	615	1000
SK 200B	TC/NC 220–320T, TW 200–300A TR/NR 750, CR 400, TO 750C	1480	35	40	610	1300	1007	1300
SK 300B	TC/NC 320T, TC 500–700T, TW 300A TR/NR 750, TR/NR 1100, CR 400–700C PM 1100, PM 1500	1800	35	40	710	1610	1310	1610

General tolerances in conformity with DIN ISO 2768-m. Special tolerances upon request.

\* with T-slots

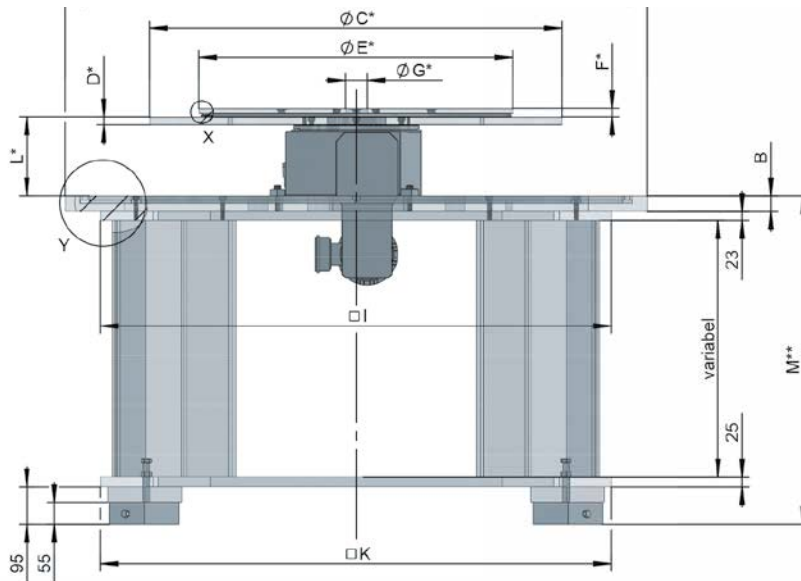
**Notes:** For the permissible loads of the stationary or rotary indexing plates, please refer to the „Rotary indexing table“ chapter. Special machining according your drawing.



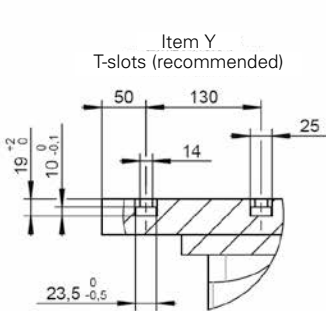
Example detailing SK 300K, TC 320T, dial and stationary plates.

# SK Series Dimensions

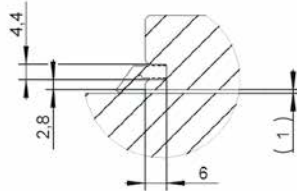
Please download the selected machine base from [www.weiss-gmbh.de](http://www.weiss-gmbh.de) (in 2D or 3D) directly into your CAD drawing. This will ensure you are using the latest model.



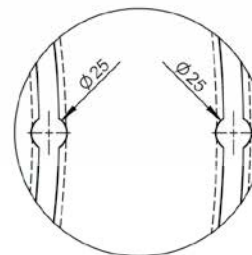
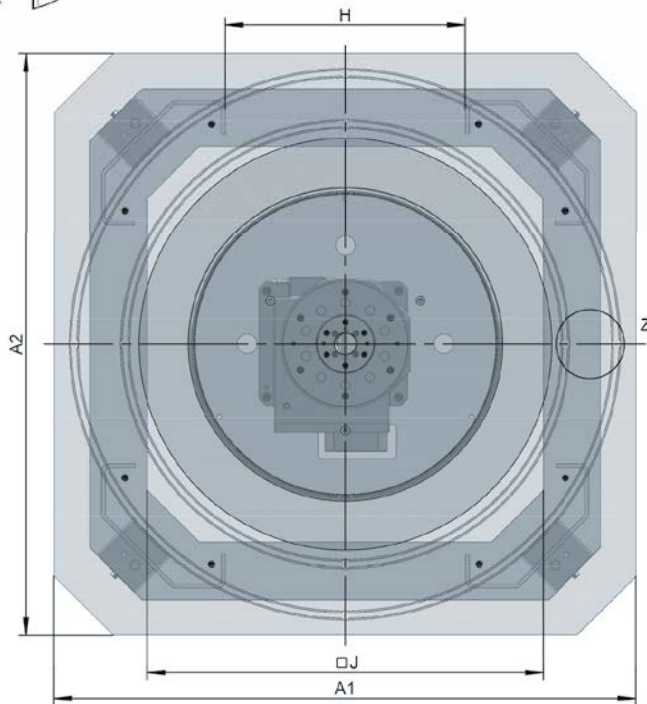
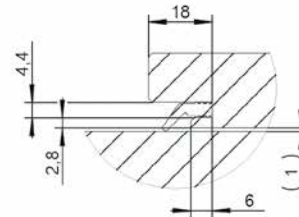
\*\* Distance M varies according to the ridge height and can be changed by  $\pm 3$  mm by adjusting the feet



Item X  
External lip seal



Item X  
Internal lip seal



Item Z  
(4 x 90°)

\* For recommended dimensions and diameters, see "Rotary indexing tables"

# Plates for rotary tables and systems

## Stationary Plate

- Standard model with integrated sealing lip between stationary and rotating plate in steel or aluminium
- Delivered with assembly hole and bore pattern (incl. middle bore) appropriate for the table, T-slots possible
- Manufactured in Flatness Quality B including 3 off blanked machining holes
- Please note! All drill holes are blind in order to avoid the accidental blocking of the rotary indexing table

## Rotary Indexing Plate

- Precision machined from aged material in a controlled temperature environment
- Recommended to be manufactured from aluminium to minimise weight
- With appropriate assembly holes and bore patterns (plate is located on the rotary indexing table with two dowel pins)

## Base Plate

- 3 cable ducts as standard
- Including cut out for drive when mounted on underside, if required
- Prior to positioning your automation equipment please observe the standard hole pattern for fixing the base plate to the base frame
- T-slots possible

## Guaranteed Precision

- We guarantee the highest precision for flatness and repeatability. Measurements are taken from the indexing dial plate when assembled to the rotary indexing unit. The precision is documented in an inspection certificate.
- Indexing accuracy of hole patterns – up to Ø 1800 mm ± 3" over Ø 1800 mm ± 8"
- Laser measurement of the indexing precision possible
- Indicate machining concerning the bore pattern
- Please forward your drawing by eMail in pdf or DXF format

## Manufacturing Note

- Dial plates with a diameter more than 550 mm will have 3 auxiliary threads. At stationary plates these threads are closed by plugs. We will inform you about the possible pitch diameter and the thread size if necessary.

## Axial accuracy for plates

Diameter (mm)	Thickness (mm)	Flatness Quality A (mm)	Flatness Quality B (mm)
< 600	≥ 20	0.04	0.10
	< 20	0.06	0.15
< 800	≥ 20	0.06	0.15
	< 20	0.07	0.18
< 1100	≥ 20	0.07	0.18
	< 20	0.08	0.20
< 1400	≥ 25	0.08	0.20
	< 25	0.10	0.25
< 1800	≥ 25	0.10	0.25
	< 25	0.20	0.50
< 2500	≥ 30	0.15	0.40
	< 30	0.25	0.55



## Delivery Time

- Depending on the diameter within 4 to 6 weeks including drilling work.
- Standard dimensions can be supplied at short notice. (outer diameters: 600, 700, 800, 1000, 1100, 1200 and 1600)
- Surface treatment: 1 week additional processing time required
- Aluminium: anodised
- Steel: chemically nickel-plated



# Machine Dimensioning

Enquiry  Enclosure with order

Dear customer,  
Thank you for your interest in our Pick-o-Mat machine. Please answer the following questions, to ensure we optimise the design of the system to suit your application:

## Stationary plate

Material:  Steel  AlMg4.5Mn  Special \_\_\_\_\_  
 Surface Treatment:  Without  Anodised  Chem. nickel-plated  Special \_\_\_\_\_  
 Seal between stationary and rotary plate:  interior  exterior  Special \_\_\_\_\_  
 Dimensions Ø E \_\_\_\_\_ mm  
 Dimensions F \_\_\_\_\_ mm - 1 mm air gap = thickness  
 Dimensions Ø G \_\_\_\_\_ mm  
 Processing according to drawing No. \_\_\_\_\_

## Rotary plate

Material:  Steel  AlMg4.5Mn  Special \_\_\_\_\_  
 Surface Treatment:  Without  Anodised  Chem. nickel-plated  Special \_\_\_\_\_  
 Flatness of Ring:  A  B  Special \_\_\_\_\_  
 Standard assembly and bore hole pattern:  With countersinking  Without countersinking  
 Dimensions Ø C \_\_\_\_\_ mm Thickness D \_\_\_\_\_ mm  
 Processing according to drawing No. \_\_\_\_\_

## Spacer Height

For rotary indexing table Height \_\_\_\_\_ mm  
 For stationary centre plate Height \_\_\_\_\_ mm

## Base Plate

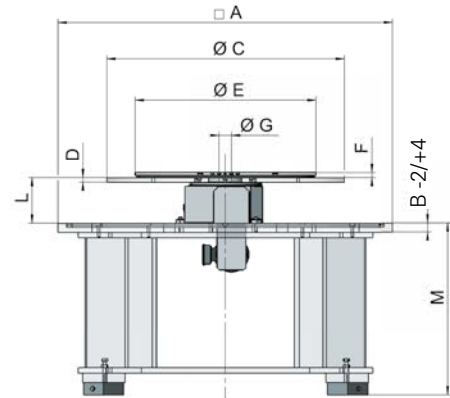
Material:  Steel  AlMg4.5Mn  Special \_\_\_\_\_  
 Surface Treatment:  Without  Anodised  Chem. nickel-plated  Special \_\_\_\_\_  
 Cable duct  Standard  According to drawing No. \_\_\_\_\_  
 T-slots  No  Yes  
 Processing according to drawing No. \_\_\_\_\_  
 Round: Dimensions Ø A \_\_\_\_\_ mm Thickness B \_\_\_\_\_ mm  
 Square/Rect. Dim. A1 \_\_\_\_\_ mm Dim. A2 \_\_\_\_\_ mm  
 With steel base plate Dim. A1 and A2:  Machined  Unmachined

Thickness B \_\_\_\_\_ mm  
 Standard tolerance B -2/+4  Special tolerance

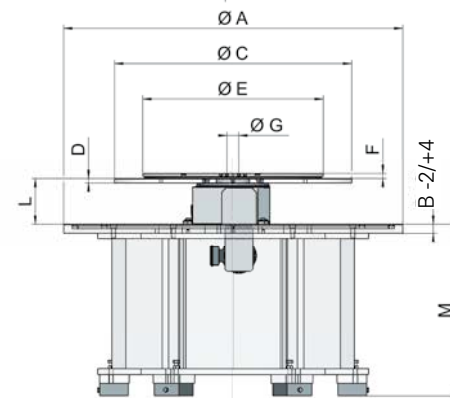
## For technical enquiries

Company: \_\_\_\_\_  
 Name: \_\_\_\_\_  
 Country: \_\_\_\_\_

## SK Series



## SR Series



## Rotary Indexing Table

(please send machine dimensioning rotary indexing table)  
 Model \_\_\_\_\_  
 No. of stations \_\_\_\_\_  
 (according to machine dimensioning rotary indexing tables)  
 Dimensions L \_\_\_\_\_ mm Colour: RAL \_\_\_\_\_

## Basic Frame

SR Series (round design)  
 BG 100R  BG 200R  BG 300R  
 BG 400R  BG 500R Height M \_\_\_\_\_ mm

## SK Series (square design)

BG 100K  BG 200K  BG 300K  
 Height M \_\_\_\_\_ mm

Processing/customisation according to drawing No. \_\_\_\_\_  
 Colour: RAL \_\_\_\_\_  
 Machine feet  Yes  No  
 screw-on  anchoring

Desired delivery date: \_\_\_\_\_  
 Phone: \_\_\_\_\_ Fax: \_\_\_\_\_  
 eMail: \_\_\_\_\_

**Disclaimer**

The WEISS product catalogue has been compiled with the greatest of care. Nonetheless, the details given are only for non-binding general information and do not replace in-depth individual consulting for a purchase decision. WEISS GmbH assumes no liability for the correctness, completeness, quality of the information provided nor that it is up to date. Liability for material defects and deficiencies in title pertaining to the information, in particular for its correctness, freedom from third-party intellectual property rights, completeness and usability is excluded – except in cases of intent or fraud. WEISS GmbH shall be freed from all other liability, unless it is mandatorily liable pursuant to the German Product Liability Law for intentional or fraudulent action or for a breach of significant contractual duties. Liability due to a breach of significant contractual duties is restricted to typical, foreseeable damages – except in cases of intent or gross negligence.

**Copyright**

© WEISS GmbH, Buchen, Germany. All rights reserved. All content such as texts, images and graphics, as well as arrangements thereof, are subject to protection by copyright and other laws on the protection of intellectual property. Content of this catalogue may not be copied, distributed or changed for commercial purposes. Some content is further subject to third-party copyright. The intellectual property is protected by various laws such as the industrial property rights, trademark rights, and copyright of WEISS GmbH.

📍 Headquarter   ● Subsidiaries   ● Representatives

