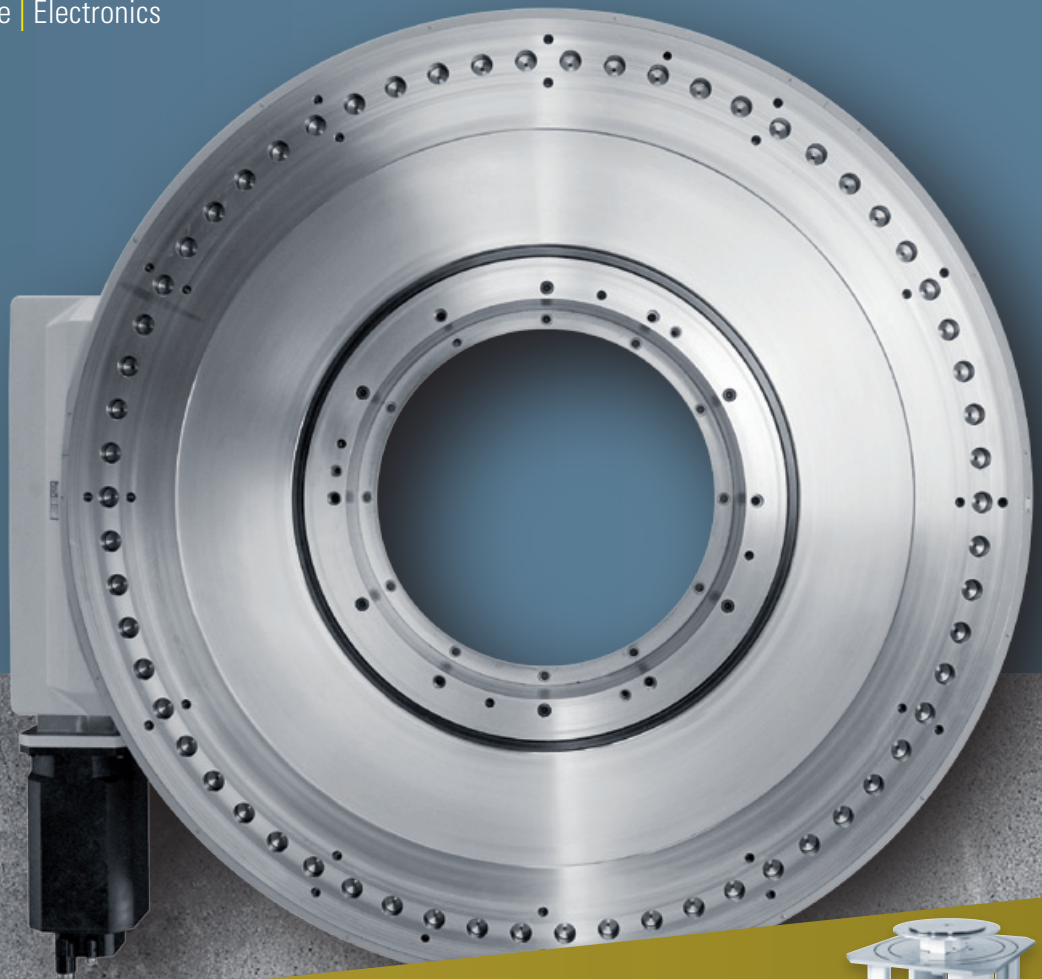


Technology that inspires

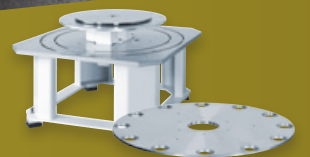


PRODUCT RANGE

Mechanics | Software | Electronics



Excerpt of the WEISS Product Range
CUSTOMER SPECIFIC SOLUTIONS



4

I would like to commission my installation quickly and efficiently



3

I require machine frames, mounting bases or custom equipment



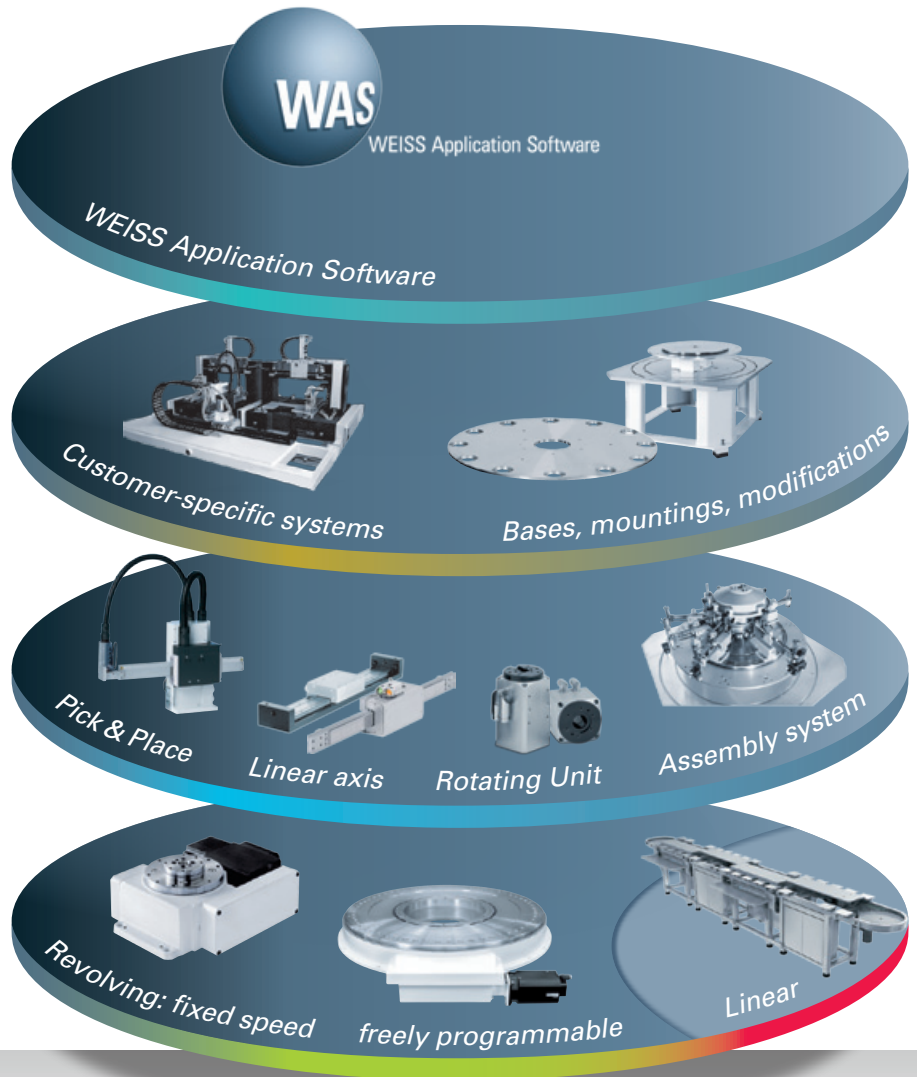
2

I require handling components



1

My transport is...



Four steps to perfect automation



TC



TR

Fixed position rotary indexing tables

10-59

TC rotary indexing table **12**
TR rotary indexing ring **48**



NC



NR



CR



TO



TW

User-programmable rotary indexing tables

NC rotary indexing table **62** NR rotary indexing ring **72**
CR/TH heavy duty ring **84** TO torque rotary indexing table **102**
TW rotary indexing table **112**



LS

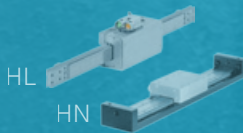
Linear assembly system

122-145

LS 280



HP



HL

HN



ST/SW

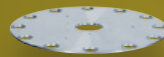


PM

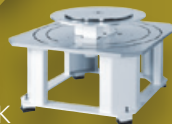
Handling module

146-195

HP Pick&Place **148** HL Linear axis **156**
HN Linear axis **164** ST/SW rotary unit **176**
PM Pick-o-Mat **186**



Plate



SK

Customer specific solutions

196-207

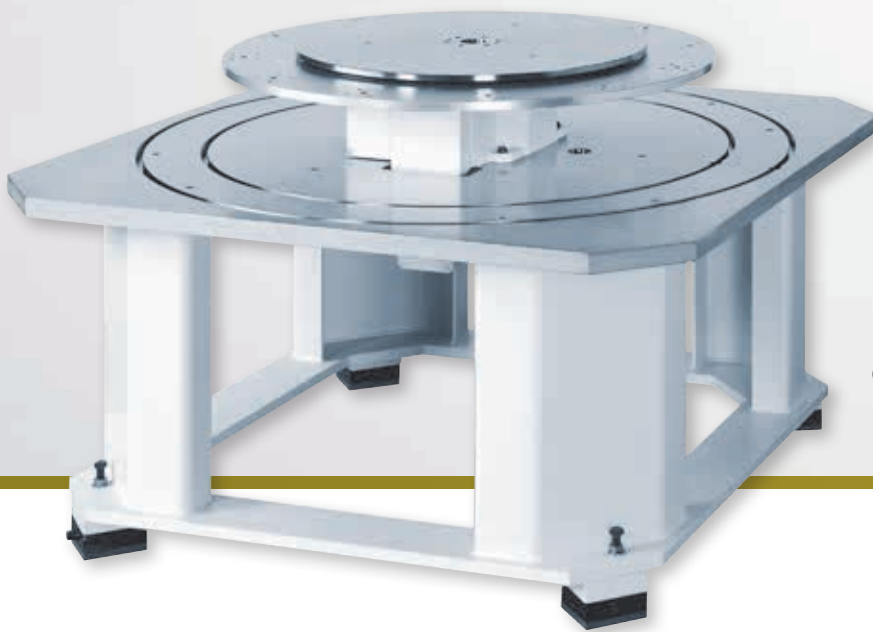
SR/SK indexing machine bases **200**
Additional indexing plate **206**



WAS-Software

208-213

WEISS Application Software (WAS)



Clear lines, attractive design

Customer-specific solutions: A system of matched components

Manufactured in-house, we can offer you your own individual basic machine – customised with regard to design, precision, dimensions and even colour. And of course all equipment comes with its own test certificate.

- **Guaranteed quality**
No nasty surprises. We produce and supply your machine from a single source as per your own specifications in terms of design, precision, dimensions and even colour - all guaranteed and documented. You receive a test report with every machine.
- **Fastest delivery time**
No need to reinvent the wheel. Implement your solution perfectly and purposefully based on optimum standards! We will supply your machine within four to six weeks.
- **Cost savings**
No engineering, no inquiries, no stress, no manufacture or assembly times. And our series production lowers costs. See for yourself!
- **Surface treatment**
We are happy to offer all components in whatever surface finish you desire:
 - Anodised aluminium components
 - Chemically nickel-plated or burnished steel
 - Painted surfaces can alternatively be powder-coated

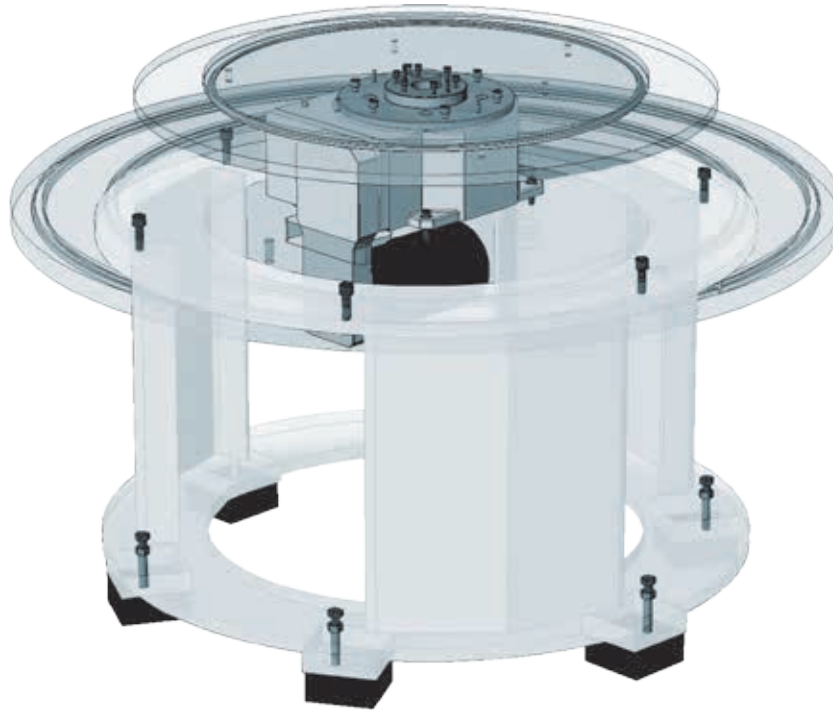


Final inspection and test protocol

<p>Basic idea ▶</p>	<p>Indexing machine bases ▶ Stationary and rotating plates</p>	
		
<p>Examples ▶</p>	<p>Custom equipment</p>	
<p><i>Individual, customised designs</i></p>		

Make the most of our expertise in plate and base plate manufacturing, and compile your own personalised system solution on the basis of our models. We can of course offer you everything you need - from special machining, right up to complete system solutions. This saves you a great deal of time. Time which you can well use for your specific machine problem.

SR Series



Special Features:

- 5 standard sizes: BG 100R, BG 200R, BG 300R, BG 400R, BG 500R
- 2 - 4 standard ribbed legs depending on diameter
- Customised diameters / designs available on request

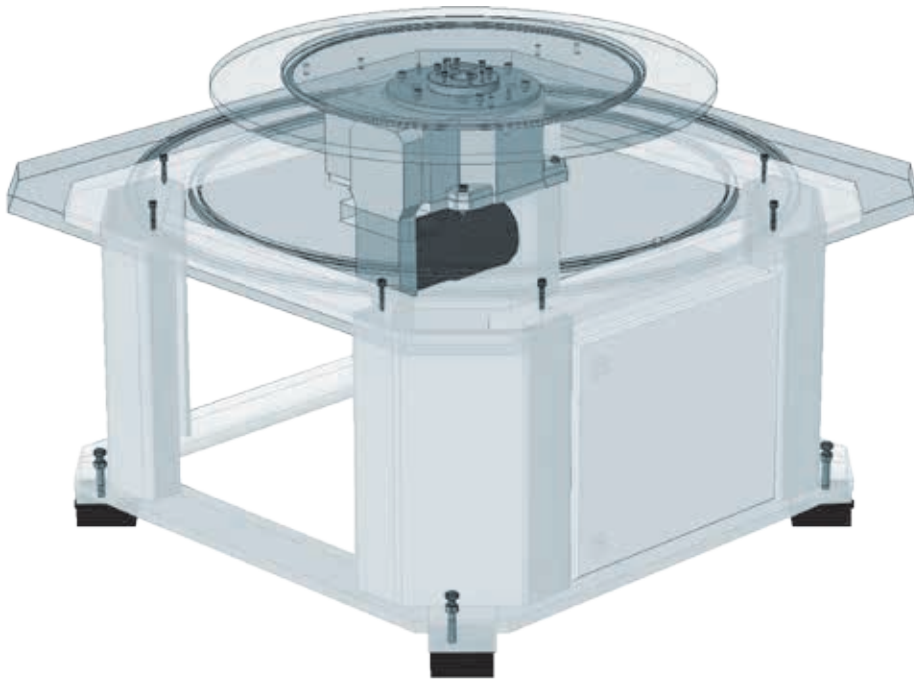
Rotary Indexing Tables

- Select the rotary indexing table suitable for your application
- Series TC, TR, TO all are available in various model sizes
- The overall height of your machine will be determined by the height of the indexing unit used and the length of the support legs.
- TC, TR are also available as freely programmable NC, NR version

Additional Rotating Dial Plates

- Our aluminium dial plates are manufactured in a controlled temperature environment from at least 3 month aged material
- Dimensions, manufacturing and surface treatments according to your specification
- Supplied with a quality certificate

SK Series



Special Features:

- 3 standard sizes: BG 100K, BG 200K, BG 300K
- Integrated switch cabinets available
- Sheet metal infills possible
- Sizes available up to 2100 mm x 2100 mm (2900 mm diagonal measurement possible)
- Customised sizes available upon request

Base Plates

- Round, square or rectangular
- Dimensions, material and processing according to your specification
- Machining according to your drawing
- T-slots possible
- Cable ducts standard

Basic Frames

- Round and square standard sizes
- Height adjustment possible
- Customised design upon request
- High quality rigid fabricated construction
- Height adjustable and shock absorbing feet
- Switch cabinets can only be fitted into square bases

Additional Stationary Top Plates

- With integrated lip seal between stationary and rotating indexing plate
- In aluminium or steel, manufactured according to your drawing
- T-slots possible

SR Series

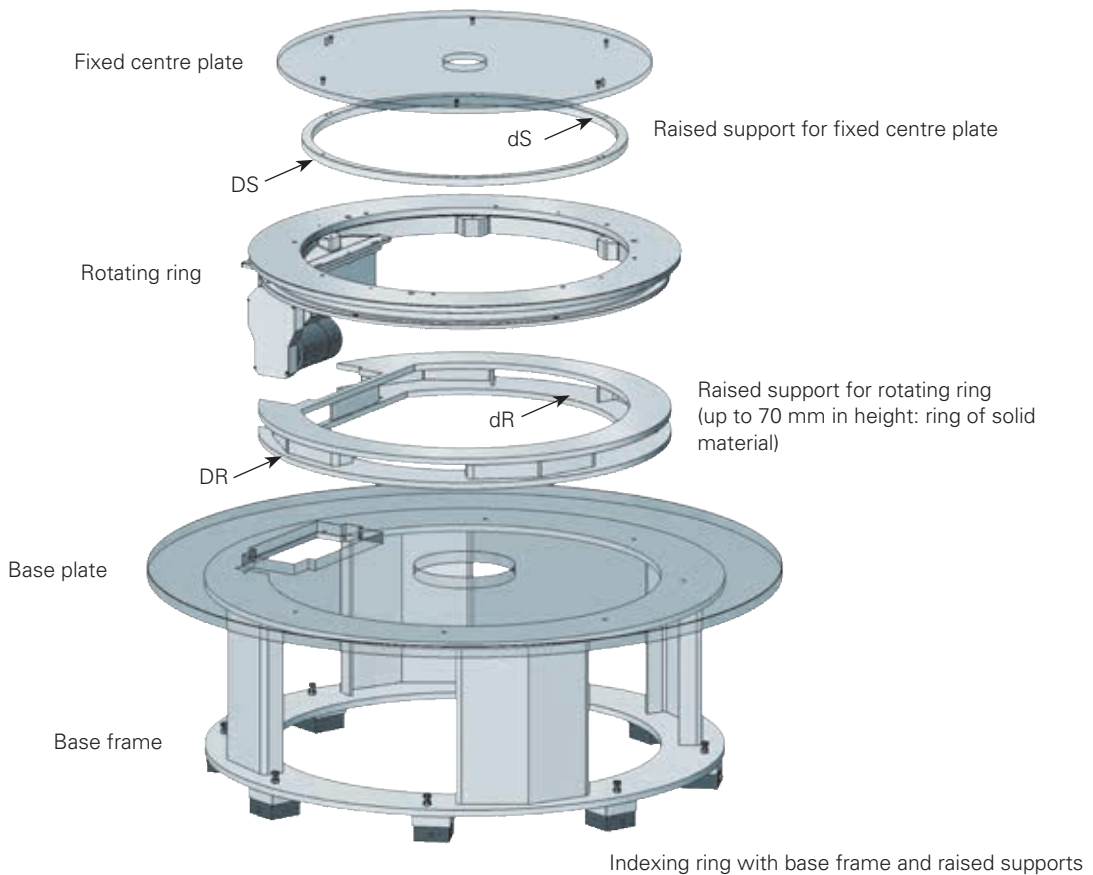
Table of dimensions for standard version (Attention! New type designation)

Type	Recommended rotary table type	ØA (Standard)	B	B*	H	ØI	ØJ	ØK	M*
SR 100B	TC 150T, TC 220T, TC 320T, TO 150C, TO 220C, TO 750C	1300	35	40	575	960	615	960	760
SR 200B	TC 220T, TC 320T, TC 500T, TR/NR 750, PM 1100, TO 750C	1500	35	40	485	1200	815	1200	760
SR 300B	TC 320T, TC 500T, TC 700T, TR/NR 750, TR/NR 1100, PM 1500	1800	35	40	615	1350	967	1350	760
SR 400B	TC 500T, TC 700T, TR/NR 1100, TR/NR 1500	2200	35	40	690	1800	1357	1800	760
SR 500B	TR/NR 1500, TR/NR 2200	2500	35	40	656	2200	1700	2200	760

General tolerances in conformity with DIN ISO 2768-m. Special tolerances upon request.

* with T-slots

Notes: The positioning of the legs may not be symmetrical depending upon the indexing unit selected. For dimensions please request a drawing. See the relevant rotary indexing table brochure for permissible loads on stationary or rotary indexing plates. Special machining according your drawing.



Indexing ring with base frame and raised supports

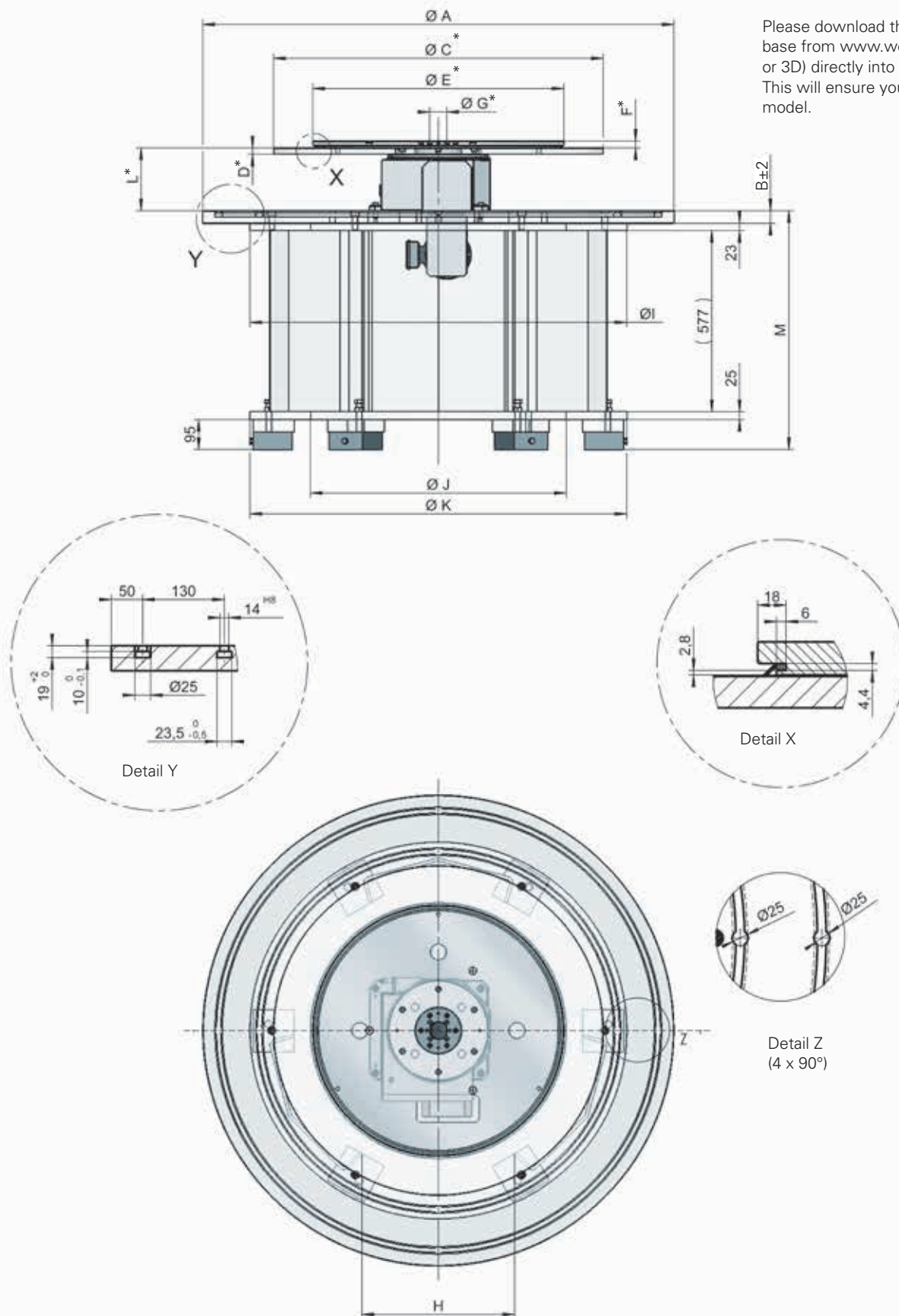
Optional raised support dimensions

for indexing rings TR / NR.

Table type	Raised support for fixed centre plate				Raised support for rotating ring			
	Name	ØDS	ØdS	Height	Name	ØDR	ØdR	Height
NR 750, TR/NR 750, TC 700	TR0750A-1340	485	410	21,5	ZH 750	770	440	variabel
TR 1100, TR/NR 1100, TC 1100	TR1100A-1340	795	720	32	ZH1100	1100	740	variabel
TR 1500, TR/NR 1500, TC 1500	TR1500A-1340	1130	1055	32	ZH1500	1420	1080	variabel

SR Series Dimensions

Please download the selected machine base from www.weiss-gmbh.de (in 2D or 3D) directly into your CAD drawing. This will ensure you are using the latest model.



*Please see chapters TC and TR/NR for recommended dimensions and diameters.

SK Series

Table of dimensions for standard version (Attention! New type designation)

Type	Recommended rotary table type	ØA (Standard)	B	B*	H	ØI	ØJ	ØK	M*
SK 100B	TC 150T, TC 220T, TC 320T	1300	35	40	410	1000	615	1000	760
SK 200B	TC 220T, TC 320T, TC 500T, TR /NR 750	1480	35	40	610	1300	1007	1300	760
SK 300B	TC 320T, TC 500T, TC 700T, TR/NR 750, TR/NR 1100, (Pick-o-Mat) PM 1100, PM 1500	1800	35	40	710	1610	1310	1610	760

General tolerances in conformity with DIN ISO 2768-m. Special tolerances upon request.

* with T-slots

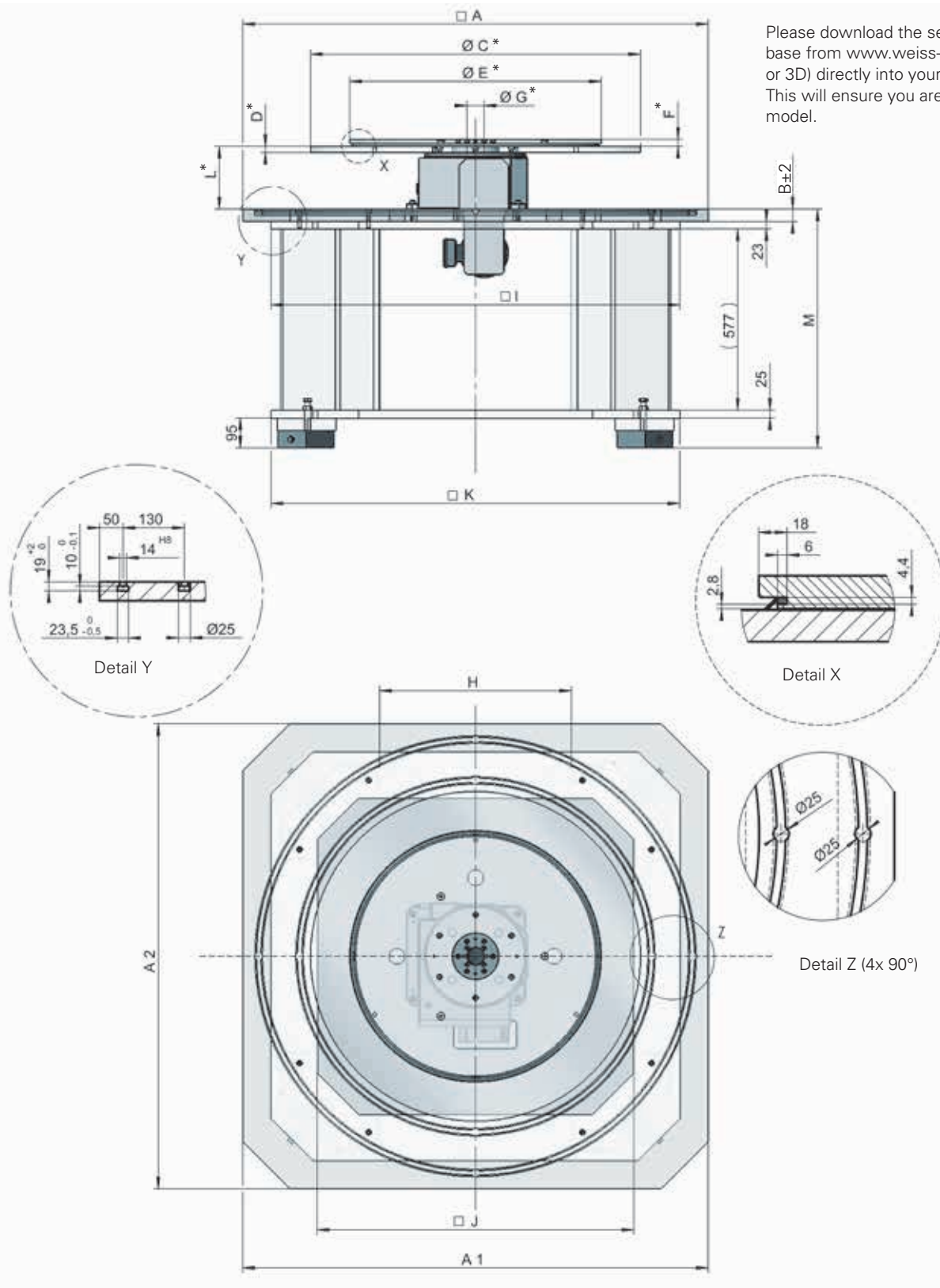
The positioning of the legs may not be symmetrical depending upon the indexing unit selected. For dimensions please request a drawing. See the information of the relevant rotary indexing table for permissible loads on stationary or rotary indexing plates. Special machining according your drawing.



Example detailing SK 300K, TC 320, dial and stationary plates.

SK Series Dimensions

Please download the selected machine base from www.weiss-gmbh.de (in 2D or 3D) directly into your CAD drawing. This will ensure you are using the latest model.



*Please see chapters TC and TR/NR for recommended dimensions and diameters.

Additional Plates

Stationary Plate

- Standard model with integrated sealing lip between stationary and rotating plate in steel or aluminium
- Delivered with assembly hole and bore pattern (incl. middle bore) appropriate for the table, T-slots possible
- Manufactured in Flatness Quality B including 3 off blanked machining holes
- Please note! All drill holes are blind in order to avoid the accidental blocking of the rotary indexing table

Rotary Indexing Plate

- Precision machined from aged material in a controlled temperature environment
- Recommended to be manufactured from aluminium to minimise weight
- With appropriate assembly holes and bore patterns (plate is located on the rotary indexing table with two dowel pins)

Base Plate

- 3 cable ducts as standard
- Including cut out for drive when mounted on underside, if required
- Prior to positioning your automation equipment please observe the standard hole pattern for fixing the base plate to the base frame
- T-slots possible

Guaranteed Precision

- We guarantee the highest precision for flatness and repeatability. Measurements are taken from the indexing dial plate when assembled to the rotary indexing unit. The precision is documented in an inspection certificate.
- Indexing accuracy of hole patterns – up to Ø 1800 mm ± 3" over Ø 1800 mm ± 8"
- Laser measurement of the indexing precision possible
- Indicate machining concerning the bore pattern
- Please forward your drawing by eMail in pdf or DXF format

Manufacturing Note

- Dial plates with a diameter more than 550 mm will have 3 auxiliary threads. At stationary plates these threads are closed by plugs. We will inform you about the possible pitch diameter and the thread size if necessary.

Axial accuracy for additional indexing plates

Diameter (mm)	Thickness (mm)	Flatness Quality A (mm)	Flatness Quality B (mm)
< 600	≥ 20	0,04	0,10
	< 20	0,06	0,15
< 800	≥ 20	0,06	0,15
	< 20	0,07	0,18
< 1100	≥ 20	0,07	0,18
	< 20	0,08	0,20
< 1400	≥ 25	0,08	0,20
	< 25	0,10	0,25
< 1800	≥ 25	0,10	0,25
	< 25	0,20	0,50
< 2500	≥ 30	0,15	0,40
	< 30	0,25	0,55



Delivery Time

- Depending on the diameter within 4 to 6 weeks including drilling work.
- Standard dimensions can be supplied at short notice. (outer diameters: 600, 700, 800, 1000, 1100, 1200 and 1600)
- Surface treatment: 1 week additional processing time required
- Aluminium: anodised
- Steel: chemically nickel-plated

Machine Dimensioning

Enquiry Enclosure with order

Dear customer,

Thank you for your interest in our Pick-o-Mat machine. Please answer the following questions, to ensure we optimise the design of the system to suit your application:

Stationary plate

Material:

Steel AlMg4,5Mn Special _____

Surface Treatment:

Without Anodised Chem. nickel-plated Special _____

Seal between stationary and rotary plate::

Flush Not flush Special _____

Dimensions Ø E _____ mm

Dimensions F _____ mm - 1 mm air gap = thickness

Dimensions Ø G _____ mm

Processing according to drawing No. _____

Rotating dial plate

Material:

Steel AlMg4,5Mn Special _____

Surface Treatment:

Without Anodised Chem. nickel-plated Special _____

Flatness of Ring:

A B Special _____

Standard assembly and bore hole pattern:

With countersinking Without countersinking

Dimensions Ø C _____ mm Thickness D _____ mm

Processing according to drawing No. _____

Spacer Height

For rotary indexing table Height _____ mm

For stationary centre plate Height _____ mm

Base Plate

Material:

Steel AlMg4,5Mn Special _____

Surface Treatment:

Without Anodised Chem. nickel-plated Special _____

Cable duct Standard According to drawing No. _____

T-slots No Yes

Processing according to drawing No. _____

Round: Dimensions Ø A _____ mm Thickness B _____ mm

Square/Rect. Dim. A1 _____ mm Dim. A2 _____ mm

With steel base plate Dim. A1 and A2: Machined
 Unmachined

Thickness B _____ mm

Standard tolerance B -2/+4 Special tolerance

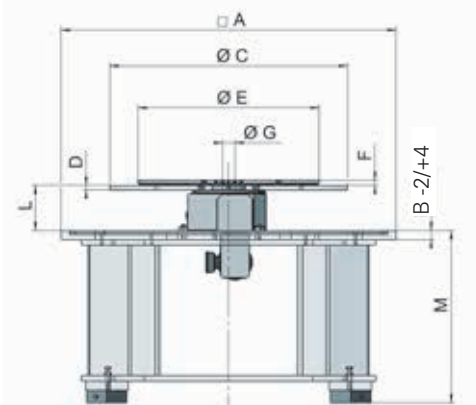
For technical enquiries

Company: _____

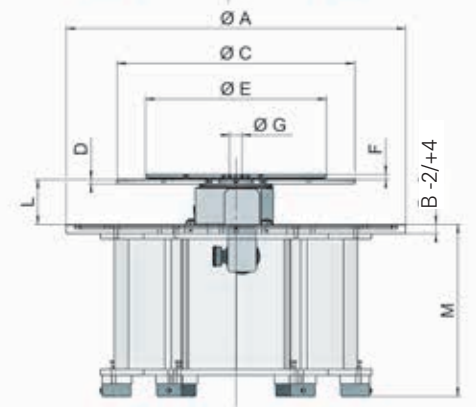
Name: _____

Country: _____

SK Series



SR Series



Rotary Indexing Table

(please send machine dimensioning rotary indexing table)

Model _____

No. of stations _____

(according to machine dimensioning rotary indexing tables)

Dimensions L _____ mm Colour: RAL _____

Basic Frame

SR Series (round design)

BG 100R BG 200R BG 300R

BG 400R BG 500R Height M _____ mm

SK Series (square design)

BG 100K BG 200K BG 300K

Height M _____ mm

Processing/customisation according to drawing No. _____

Machine feet Yes No

Colour: RAL _____

Desired delivery date: _____

Phone: _____ Fax: _____

eMail: _____

● Headquarter ● Subsidiaries ● Representatives

