

Technology that inspires



# PRODUCT RANGE

Mechanics | Software | Electronics



Excerpt of the WEISS Product Range  
**WEISS APPLICATION SOFTWARE**

4

I would like to commission my installation quickly and efficiently



3

I require machine frames, mounting bases or custom equipment



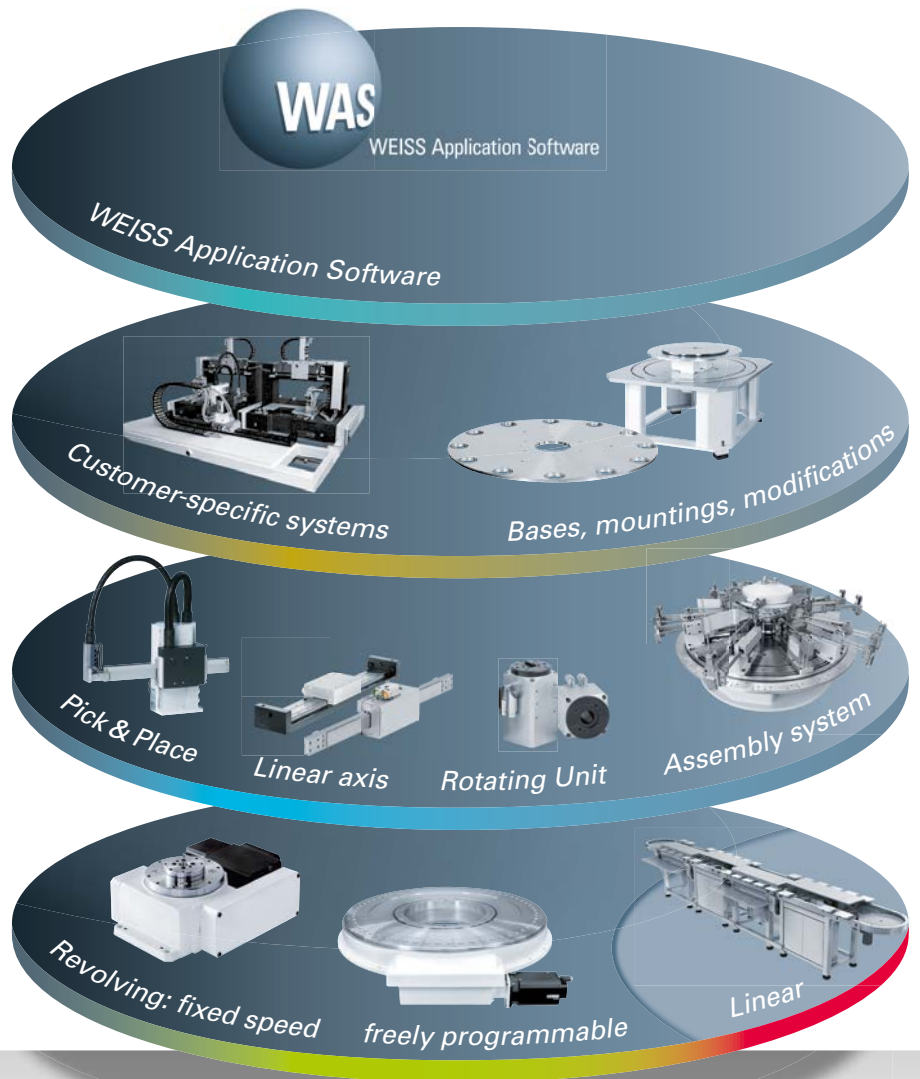
2

I require handling components



1

My transport is...



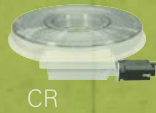
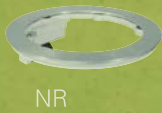
## Four steps to perfect automation

### Fixed position rotary indexing tables



TC rotary indexing table  
TR rotary indexing ring

### User-programmable rotary indexing tables



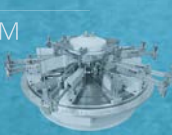
NC rotary indexing table NR rotary indexing ring  
CR/TH heavy duty ring TO torque rotary indexing table  
TW rotary indexing table

### Linear assembly system



LS 280

### Handling modules



PM Pick-o-Mat

HP Pick & Place HL Linear axis  
HG/HN Linear axes ST/SW rotary unit  
SH Lifting-rotating unit PM Pick-o-Mat

### Customer specific solutions



SR/SK indexing machine bases  
Additional indexing plate



### WAS-Software

WEISS Application Software (WAS)



# Fast and efficient: WEISS Application Software

Do you wish to commission your installation quickly and efficiently without having to deal with the minutiae of the control software? For this job WEISS has developed a software solution which supports you in an intuitive way when dealing with configuration, the control system and analysing faults. It can even be used remotely if you so desire: WEISS Application Software.



Uniform operator concept for all servo-mechanical WEISS products.



Preconfigured servo amplifier, specially matched to the respective product.

**The key advantages at a glance:**

- *Simplest commissioning (cost reduction through time saving)*
- *Plug&play for initial commissioning even without any special technical knowledge*
- *Troubleshooting tool*
- *Uniform interfaces in various languages*
- *Simple parameter substitution with the WEISS Service*
- *No detailed hardware knowledge required*
- *Visualisation*
- *Free language selection*
- *Diagnostic options via remote maintenance*
- *Simple access to parameters*
- *Error history*



**Communication**

- Digital I/O (24V inputs and outputs)
- Profibus-DP
- DeviceNet-CAN (tested at Rockwell control)
- EtherNet/IP (tested at Rockwell control)
- Modbus TCP
- Ethernet
- CAN bus
- Free ASCII protocol

**Software**

- Up to 128 positions teachable
- Up to 10 positioning programmes can be stored
- Software cams can be specified
- Forced inputs and outputs possible (e.g. for commissioning)

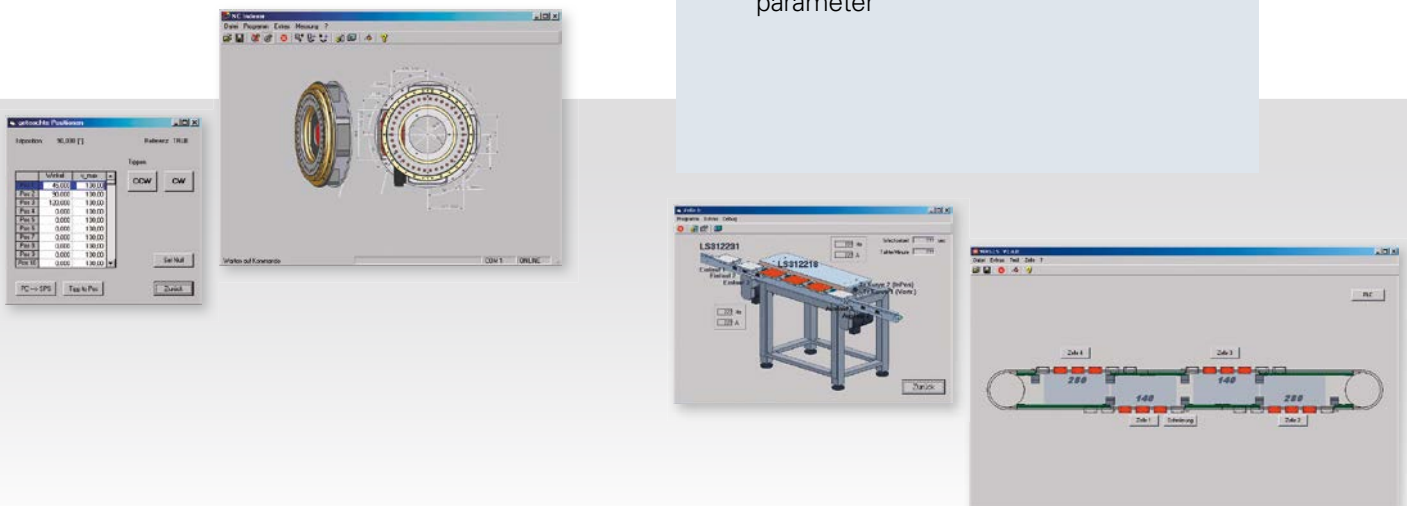


**Communication**

- Ethernet
- Profibus-DP
- EtherNet/IP
- DeviceNet-CAN

**Software**

- Visualisation
- Status display of individual modules
- Display of alarm messages
- Forced inputs and outputs
- Monitoring functions
- Ethernet connection to the control system
- Loading and display of "offline" parameter



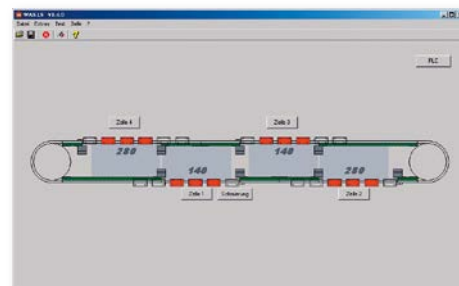


**Communication**

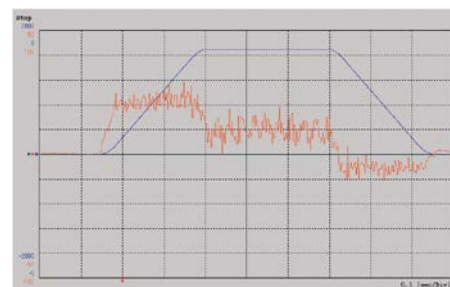
- Digital I/O (24V inputs and outputs)
- Profibus-DP
- DeviceNet-CAN( tested at Rockwell control)
- EtherNet (tested at Rockwell control)
- Modbus TCP (tested at Telemecanique control)
- Ethernet
- CAN bus
- Free ASCII protocol

**Software**

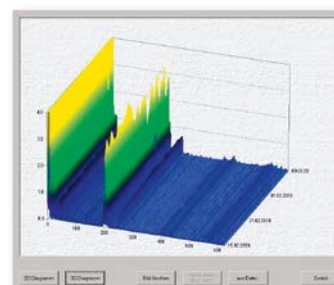
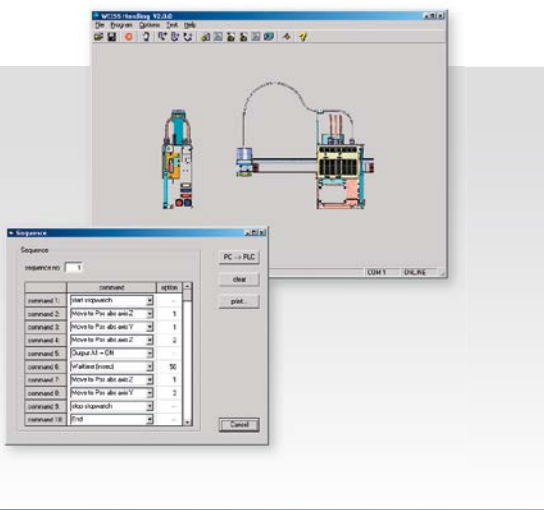
- All positions and speeds freely programmable
- Up to 128 positions teachable
- Up to 32 positioning programmes can be stored
- Forced inputs and outputs (for example for commissioning)
- Software cams can be specified



Easy parameter setting for a complex installation through a clear and structured display of the mechanical design.



Scope function for diagnosis and optimisation of control



PCM - Permanent Conditioning Monitoring for constant monitoring of the status of your rotary indexing table.

**Disclaimer**

The WEISS product catalogue has been compiled with the greatest of care. Nonetheless, the details given are only for non-binding general information and do not replace in-depth individual consulting for a purchase decision. WEISS GmbH assumes no liability for the correctness, completeness, quality of the information provided nor that it is up to date. Liability for material defects and deficiencies in title pertaining to the information, in particular for its correctness, freedom from third-party intellectual property rights, completeness and usability is excluded – except in cases of intent or fraud. WEISS GmbH shall be freed from all other liability, unless it is mandatorily liable pursuant to the German Product Liability Law for intentional or fraudulent action or for a breach of significant contractual duties. Liability due to a breach of significant contractual duties is restricted to typical, foreseeable damages – except in cases of intent or gross negligence.

**Copyright**

© WEISS GmbH, Buchen, Germany. All rights reserved. All content such as texts, images and graphics, as well as arrangements thereof, are subject to protection by copyright and other laws on the protection of intellectual property. Content of this catalogue may not be copied, distributed or changed for commercial purposes. Some content is further subject to third-party copyright. The intellectual property is protected by various laws such as the industrial property rights, trademark rights, and copyright of WEISS GmbH.



📍 Headquarter   ● Subsidiaries   ● Representatives

