

Technology that inspires



PRODUCT RANGE

Mechanics | Software | Electronics



Excerpt of the WEISS Product Range
SH LIFTING-ROTATING UNIT

4

I would like to commission my installation quickly and efficiently



3

I require machine frames, mounting bases or custom equipment



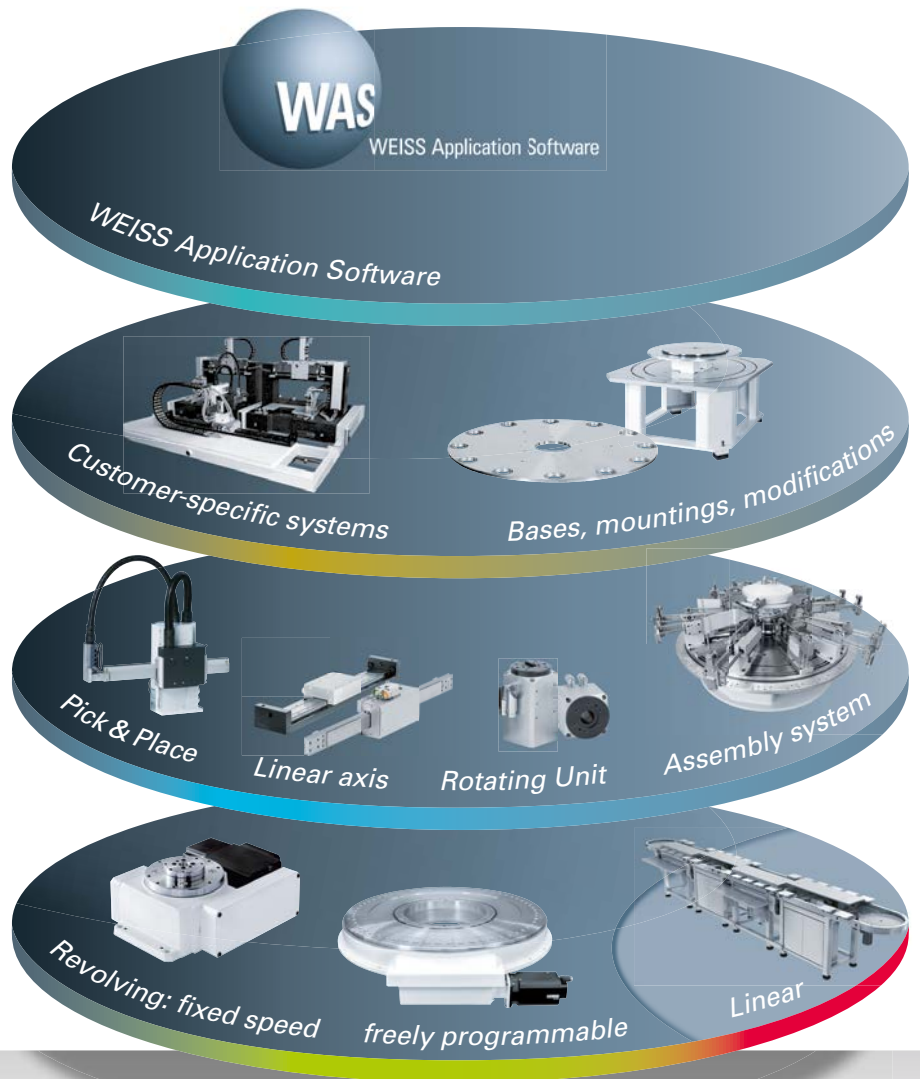
2

I require handling components



1

My transport is...



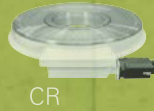
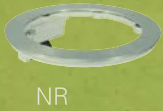
Four steps to perfect automation

Fixed position rotary indexing tables



TC rotary indexing table
TR rotary indexing ring

User-programmable rotary indexing tables



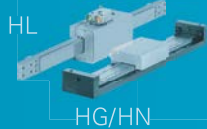
NC rotary indexing table NR rotary indexing ring
CR/TH heavy duty ring TO torque rotary indexing table
TW rotary indexing table

Linear assembly system



LS 280

Handling modules



HG/HN



PM



HP Pick & Place HL Linear axis
HG/HN Linear axes ST/SW rotary unit
SH Lifting-rotating unit PM Pick-o-Mat

Customer specific solutions



SK



SR/SK indexing machine bases
Additional indexing plate



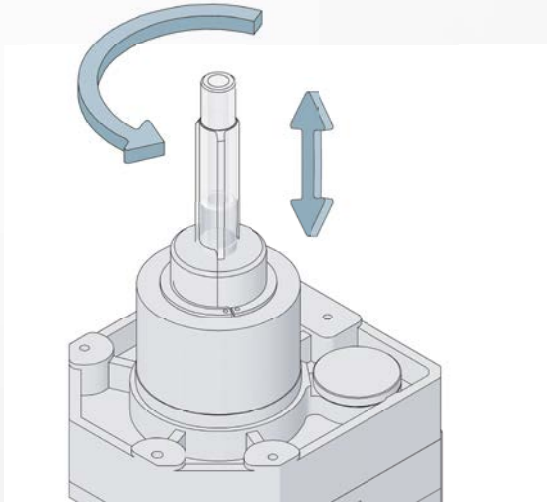
WAS-Software

WEISS Application Software (WAS)



SH lifting-rotating unit

The resounding success enjoyed by the SH 75 is largely thanks to its versatile and flexible deployment options. The lifting and rotary axes are user-programmable independently of one another – making the axis combination suitable for a wide range of applications, including varying tasks. A high power density, extremely compact dimensions, as well as fast and convenient start-up using the WEISS Application Software are further plus points. The new integrated servo motors have catapulted the unit into new categories of dynamics and precision.



Handling unit with independent servo axes for lifting and rotary movements



Fast, easy and secure setting through its unique user software

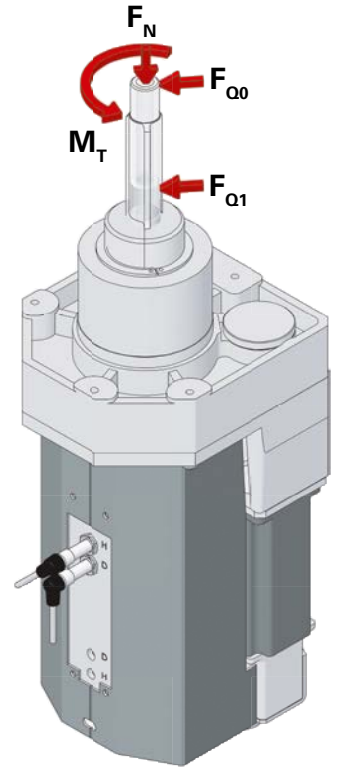
The key advantages at a glance

- *Compact design with high power density*
- *Excellent dynamics thanks to use of the latest servo drives*
- *Flexible deployment options throughout varying tasks/processes*
- *User programmability of the two independent lifting and rotary axes*
- *WEISS Application Software (WAS) for quick and easy start-up*

SH 75

Technical data

Stroke	0-75 mm user-programmable
Rotary axis	Any, endless rotation also possible
Repeatability accuracy (rotation)	± 115"
Repeatability accuracy (stroke)	± 0.02 mm
Output shaft	Ø 18 h6
Output shaft bore	Ø 11 mm (for air and sensor cables)
Installation position	Any
Weight	Approximately 15 kg
Max. lateral force with F_{O0} shaft extended	500 N
Max. lateral force with F_{O1} shaft retracted	1500 N
Max. normal force F_N	30 N
Torque M_T	10 Nm
Max. intermediate circuit voltage	560 V DC



Cycle times

Diagrams can be used to determine the cycle times for your motion sequence based on the respective travel distance and load on the rotary axis.

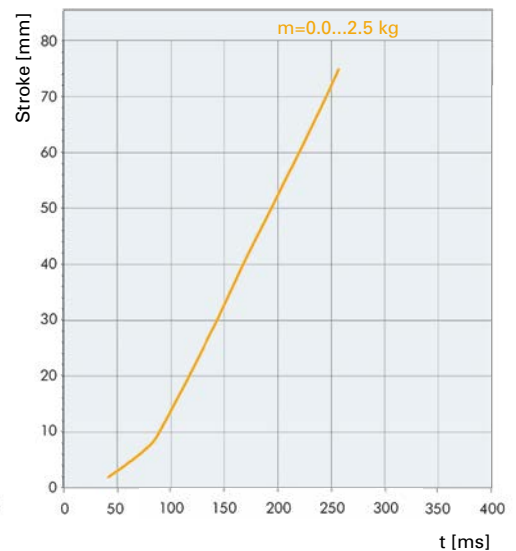
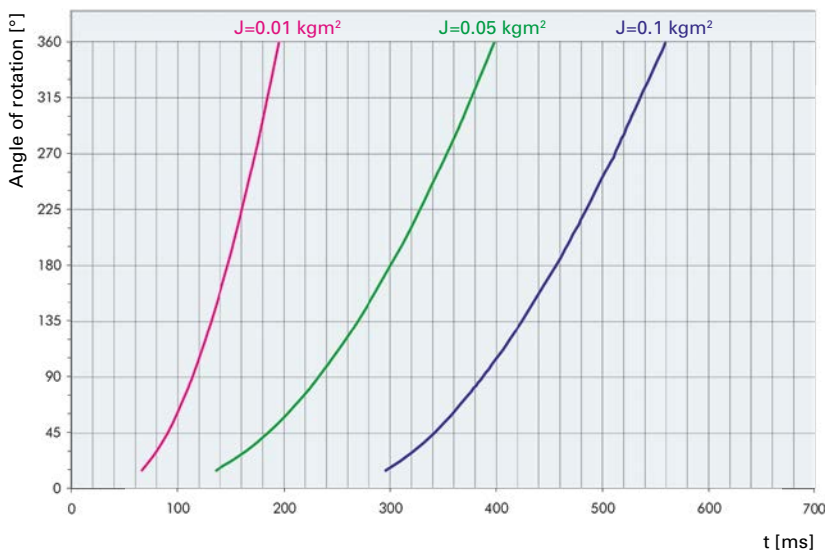
Example:

Load: 0.2 kg on 230 mm radius (corresponds to 0.01 kgm²)

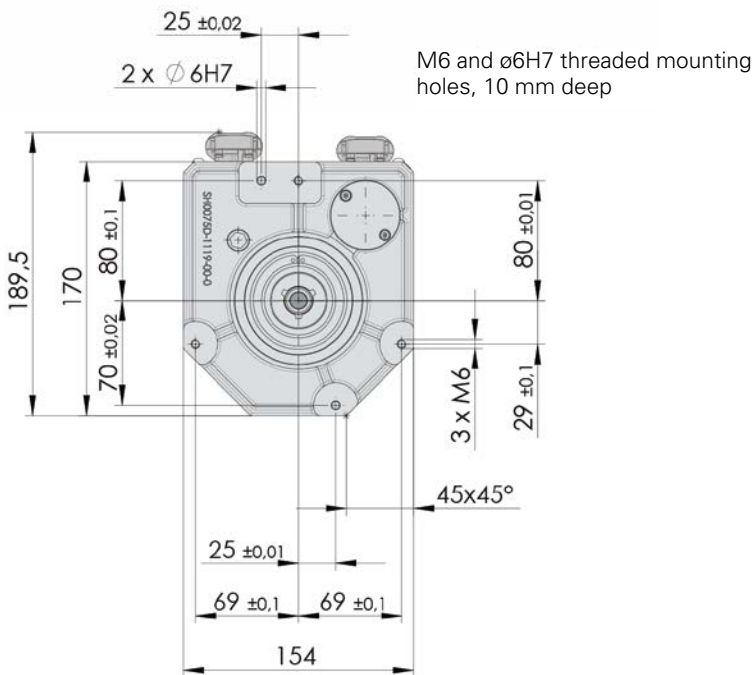
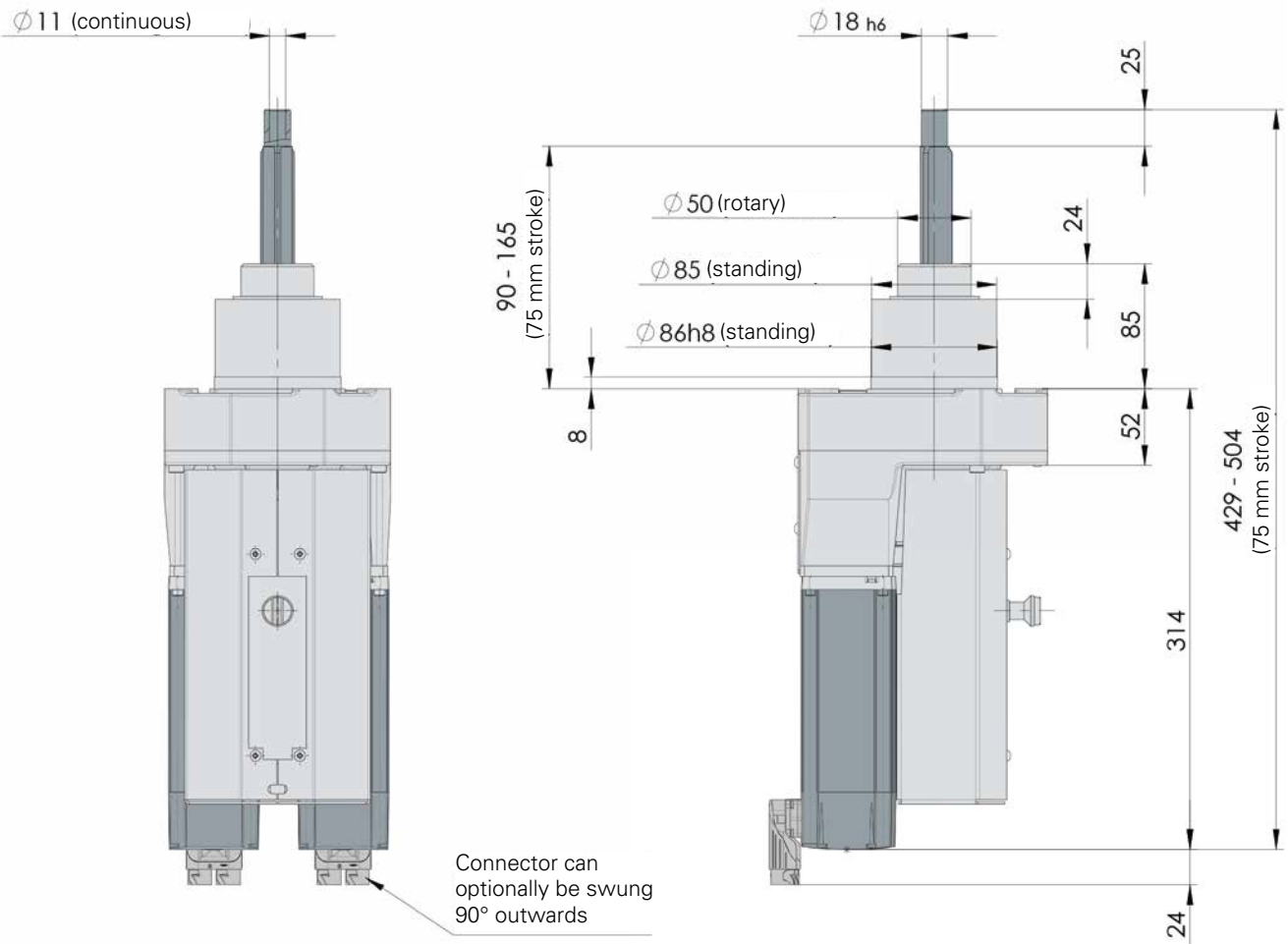
Movement: Lifting 20 mm / rotation 90° / lowering 30 mm

Cycle time: $t_{Lift} + t_{Rotate} + t_{Lower} = 120 \text{ ms} + 115 \text{ ms} + 140 \text{ ms} = 375 \text{ ms}$.

Drive Time



Dimensions SH 75



WAS – WEISS Application Software

In addition to the basic functions of the start up, WAS – WEISS Application Software also gives you easy access to the teaching of positions and programming of motion-sequences. Your Windows-PC will be connected through RS232 or Ethernet with our drive.

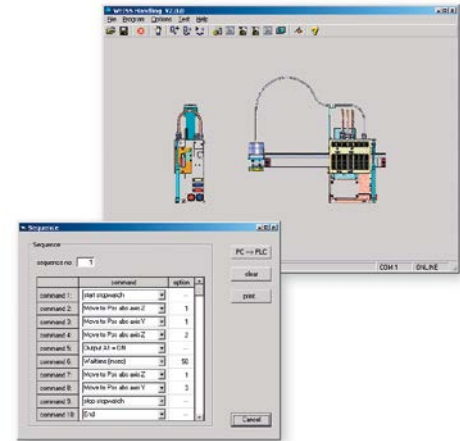


Communication

- Profibus-DP
- Digital I/O
- Free ASCII protocol
- Ethernet
- DeciveNet-CAN
- EtherNet/IP
- Modbus TCP
- CAN

Software

- All positions and speeds are user programmable
- Up to 128 teaching positions
- Up to 32 programs can be stored
- Ability to force inputs and outputs (e.g. for initial start-up)
- Software cam-functions can be defined



Machine Layout SH 75

- Enquiry Enclosure with order

Dear Customer,

Thank you for your interest in our SH 75 servo-mechanical lifting-rotating unit. To ensure optimum design of the system for your specific requirements, please answer the following questions:

- Mass moment of inertia _____ kgm²
 Weight (gripper + workpiece) _____ kg

Accessories

- Clamping set

Electrical components

WEISS control package

Amplifier, WAS software

Cable lengths: 5m* 10m 15m 20m 25m

Interface to customer PLC

- Ethernet
 Profibus-DP*
 digital I/O
 CAN bus
 Free ASCII protocol
 DeviceNet-CAN (Rockwell)
 EtherNet/IP (Rockwell)
 Modbus TCP (Telemecanique)

Interface to the WEISS Application Software (WAS)

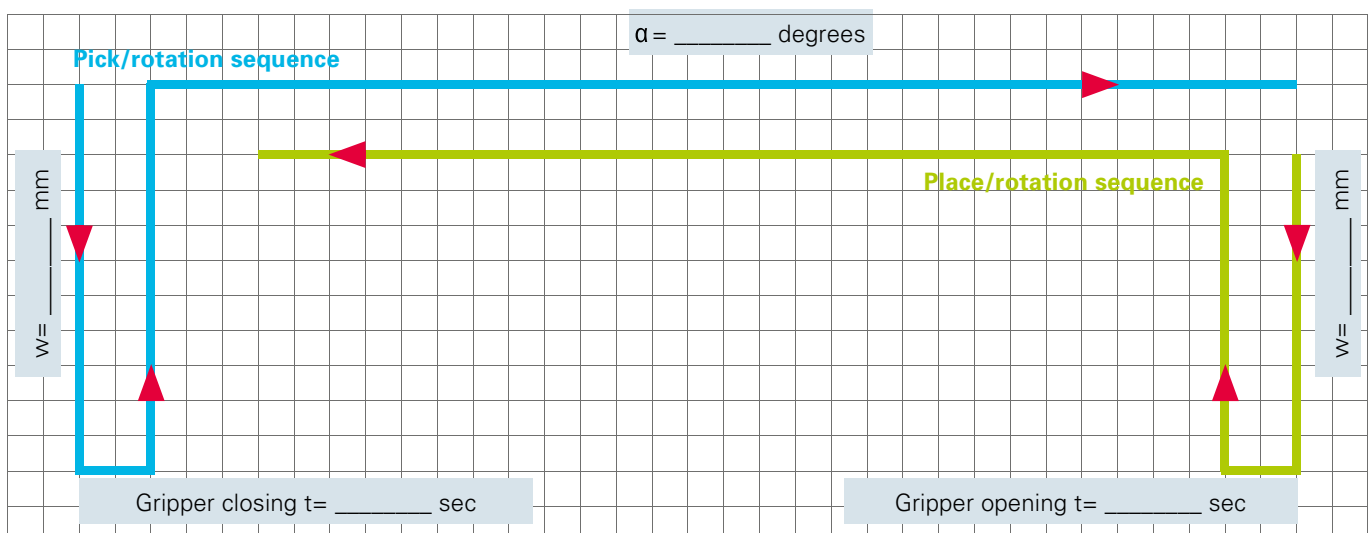
RS232 and Ethernet included as standard

- USB-to-RS232 adapter

Supply voltage

- 1 x 208 to 230 V ~ 50/60 Hz*
 3 x 208 to 230 V ~ 50/60 Hz
 3 x 400 to 480 V ~ 50/60 Hz (larger installation dimensions)

Cycle time calculation – please give us an idea of your desired motion sequence:



For technical enquiries

Company: _____

Desired delivery date: _____

Name: _____

Phone: _____ Fax: _____

Country: _____

email: _____

Disclaimer

The WEISS product catalogue has been compiled with the greatest of care. Nonetheless, the details given are only for non-binding general information and do not replace in-depth individual consulting for a purchase decision. WEISS GmbH assumes no liability for the correctness, completeness, quality of the information provided nor that it is up to date. Liability for material defects and deficiencies in title pertaining to the information, in particular for its correctness, freedom from third-party intellectual property rights, completeness and usability is excluded – except in cases of intent or fraud. WEISS GmbH shall be freed from all other liability, unless it is mandatorily liable pursuant to the German Product Liability Law for intentional or fraudulent action or for a breach of significant contractual duties. Liability due to a breach of significant contractual duties is restricted to typical, foreseeable damages – except in cases of intent or gross negligence.

Copyright

© WEISS GmbH, Buchen, Germany. All rights reserved. All content such as texts, images and graphics, as well as arrangements thereof, are subject to protection by copyright and other laws on the protection of intellectual property. Content of this catalogue may not be copied, distributed or changed for commercial purposes. Some content is further subject to third-party copyright. The intellectual property is protected by various laws such as the industrial property rights, trademark rights, and copyright of WEISS GmbH.

📍 Headquarter ● Subsidiaries ● Representatives

