

+ **5200 mm** - the widest machine on the market!

markets

furniture

fashion

leather

automotive

technical textile

composites

sign

packaging

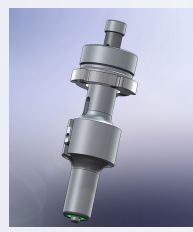
tools and modules



electric oscillating knife



electric powered rotary knife



kisscut



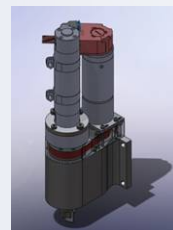
drag knife



router module



pen module



punch/notch module



drill module

cutting technology

features

- + modular construction - *upgrade and tailor your premiumcut elc to your needs at any time!*
- + easy handling through fast and easy tool exchange
- + very flexible for customized production
- + *all materials - one cutter*
- + working width up to 5200 mm!
- + acceleration up to 2g and cutting speed up to 120m/min (2m/s) - *accelerate your production!*
- + more robust 2 motor drive system (gantry drive) - *speed and acceleration guaranteed across even the largest machines*
- + beam clearance 60mm (cutting height up to 50mm) - *cut a wide range of thick materials on one machine*
- + vacuum pump with low electricity consumption - *reduce your electricity bills at higher vacuum power!*

all products - one partner

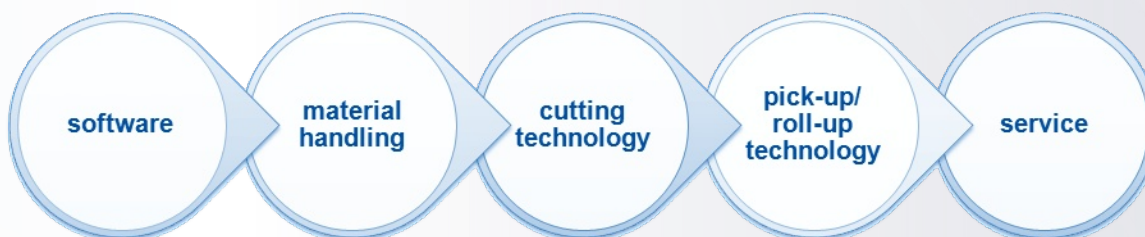
dimensions

Working width*	Cutting window length*	
1400	1000	2000
1600		2000
1800		2000
2200		2000
2600		2000
2800		3200
3200		3200
5200		3200

conveyor extensions in the standard versions: 2000mm and 3200mm*

*customized sizes are always available

the system from a single source



www.topcut-bullmer.com

contact us for further information!