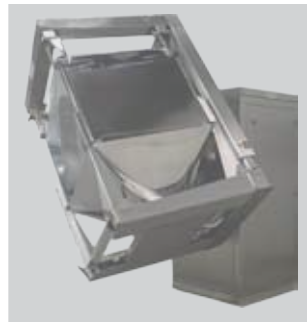


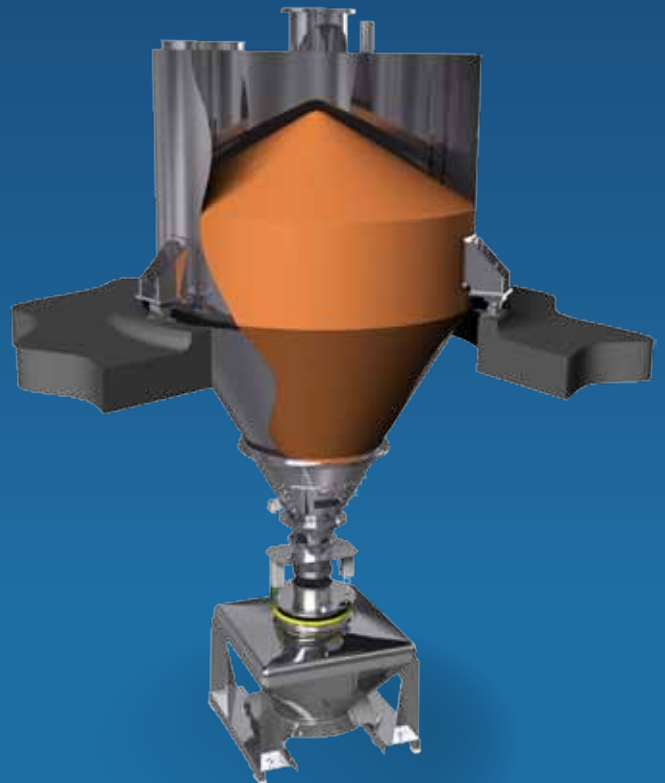
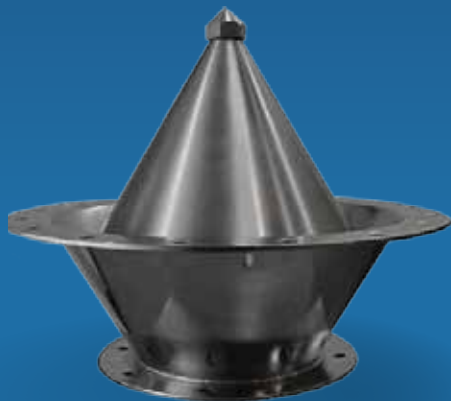


www.matconibc.com



Silo/Hopper Discharger Valves

Complete material control





www.matconibc.com

Discharger Valves...

...promotes controlled discharge of even the most challenging materials, from free-flowing to cohesive.

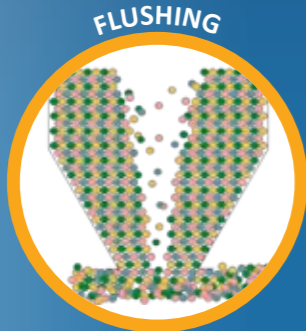
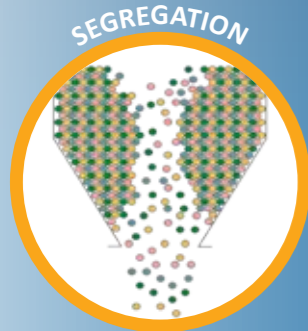
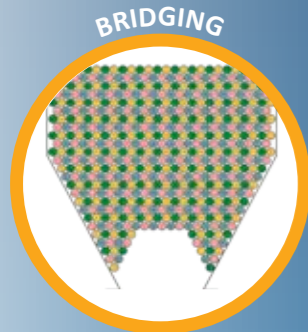


Key Features

- 1 Silo
- 2 Powder
- 3 Discharger Valve
- 4 IBC



Powder Handling Issues



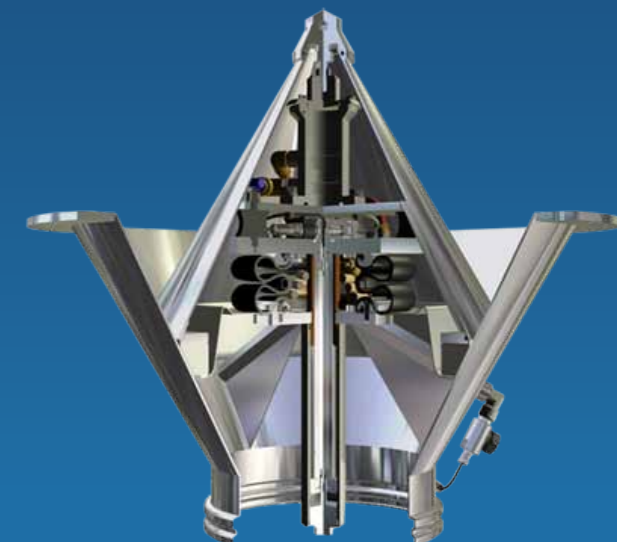
Discharger Valves are designed to be fitted to Silos and Hoppers to equip them with **Cone Valve technology**, so that powder discharge can be a more controlled process.

As the Cone Valve lifts it creates an annular gap through which the powder flows freely under gravity. This mass-flow ensures that material is pulled from all parts of the vessel, preventing rat-holing & segregation. The lift height is adjustable which allows metered doses to be discharged. The integral cone vibration breaks any naturally occurring bridges in the Silo.

At any time during the process the valve may be closed to shut off the flow. A variety of sizes are available from 570mm to 2.5m diameter.

Key Benefits

- ▶ Overcomes Bridging, Ratholing, Segregation & Flushing
- ▶ Promotes complete discharge
- ▶ Accurate dosing - gravimetric or volumetric
- ▶ Controlled flow - without the need for secondary feeders
- ▶ Fail safe shut off of material flow
- ▶ Dust-tight with no flexible connections





www.matconibc.com



MATCON, Bramley Drive, Vale Park West, Evesham, Worcestershire, WR11 1JH, UK
Tel: +44 (0) 1386 769 000 Fax: +44 (0) 870 1911116 Email: matcon_marketing@idexcorp.com

