

AGRIEMACH^{LTD}

CATALYTIC CONVERTERS AND MUFFLERS



Since
1976

CATALYTIC CONVERTERS AND MUFFLERS

For the conversion of Carbon Monoxide, Hydrocarbons and Soluble Organic Fraction in Exhaust Gas

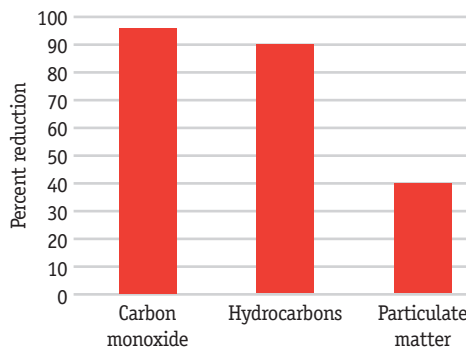
Agriemach offer a vast range of Catalytic Converter solutions for the off-road market, from simple welded sub-straight to install directly in the exhaust line, to complete (Original Equipment) muffler replacement.

We have thousands of designs for many different models of machinery, but failing that you can send us your existing muffler/silencer and we will convert it to a Catalysed system with the catalyst built in – we make it simple!

THE BENEFITS

- > Quick and Easy Installation
- > High Efficiency conversion of Carbon Monoxide and Hydrocarbons
- > Heavy Duty Stainless Steel Construction
- > Low Backpressure
- > Maintenance Free
- > Available for Diesel, Petrol and Gas engines

Typical catalytic converter conversion efficiency



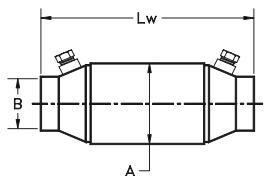
Some of the machines fitted to:

- > Atlas Copco
- > Benford
- > Bobcat
- > Bomag
- > Caterpillar
- > Dresser
- > Hitachi
- > Hyster
- > Ingersol Rand
- > JCB
- > Kobelco
- > Komatsu
- > Liebherr
- > Linde
- > Linkbelt
- > Manitou
- > Massey-Ferguson
- > Mitsubishi
- > Takeuchi
- > Terex
- > Thwaites
- > Volvo

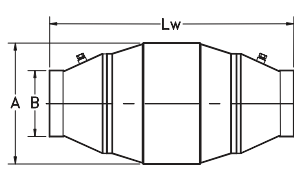
MINE-X® OXIDATION CATALYTIC PURIFIER DIMENSIONS

	DC2	DC3	DC4	DC5	DC6	DC7	DC8	DC10	DC12	DC14	DC16	DC18
Max Engine Power hp (kW)*	9 (7)	16 (12)	32 (24)	53 (40)	84 (63)	123 (92)	168 (125)	248 (185)	363 (271)	456 (340)	733 (547)	1114 (831)
Max Exhaust Gas Flow cfm (m ³ /h)*	50 (85)	95 (160)	180 (310)	300 (515)	480 (820)	705 (1205)	965 (1640)	1425 (2425)	2080 (3540)	2615 (4445)	4130 (7025)	6355 (10810)
Approx. Weight – DP lb (kg)	0.5 (0.2)	1.0 (0.4)	1.8 (0.8)	2.7 (1.2)	3.9 (1.8)	5.5 (2.6)	6.9 (3.1)	10.6 (4.8)	13.7 (6.2)	15.9 (7.2)	24.8 (11.3)	–
Approx. Weight – DQ lb (kg)	–	–	3.6 (1.6)	4.9 (2.2)	6.6 (3.0)	8.3 (3.8)	10.3 (4.7)	14.0 (6.3)	17.1 (7.7)	19.3 (8.7)	28.2 (12.8)	17.87 (454)
A – Diameter in (mm)	1.60 (40)	2.43 (62)	3.12 (79)	4.00 (102)	5.00 (127)	6.00 (152)	7.00 (178)	8.50 (216)	10.12 (257)	11.50 (292)	14.50 (368)	17.87 (454)
L _w – Length in (mm)	6.50 (165)	6.00 (152)	7.25 (184)	9.20 (234)	9.62 (244)	10.37 (264)	12.00 (305)	17.05 (433)	17.06 (433)	18.42 (468)	21.04 (534)	32.75 (831.9)
L _c – length in (mm)	–	–	8.00 (203)	9.60 (244)	10.00 (254)	10.85 (276)	12.35 (314)	17.50 (445)	17.50 (445)	18.80 (478)	21.50 (546)	–
C – clamp diameter in (mm)	–	–	4.22 (107)	5.25 (133)	6.25 (159)	7.25 (184)	8.25 (210)	8.25 (210)	8.25 (210)	8.25 (210)	8.25 (210)	–
B – exhaust pipe outside diameter	Customer Specified											

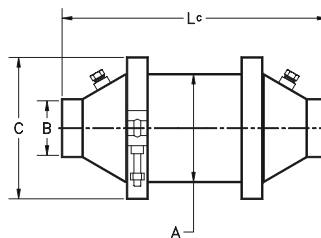
All sizes are based on an exhaust temperature of 480°C. This chart is for reference use only. Please contact Agriemach for final purifier size determination.



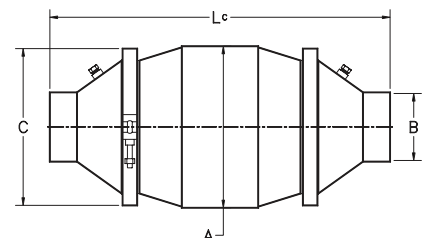
MINE-X® Welded Design (DP)
DC2 to DC8



MINE-X® Welded Design (DP)
DC10 to DC16



MINE-X® Clamped Design (DQ)
DC4 to DC8



MINE-X® Clamped Design (DQ)
DC10 to DC16

