



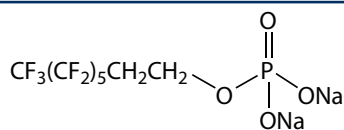
August 17, 2011

NEW PRODUCTS

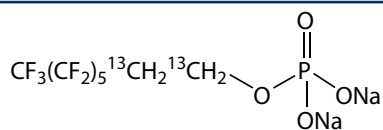
Native and Mass-Labelled **Mono- and Di-Substituted Polyfluorinated Phosphate Esters (PAPs & diPAPs)**

The application of polyfluorinated phosphate esters (PAPs) to food-contact paper products has raised concerns regarding our potential exposure levels. It has been shown that PAPs can leach out of food packaging and into the food that we consume. PAPs can be mono-, di-, or tri-substituted (monoPAPs, diPAPs, or triPAPs respectively) and the polyfluorinated alkyl chain can vary in length with the most commonly observed homologues being the 6:2 and 8:2 chain lengths. The toxicities associated with these compounds, and the fact that they have been identified as possible precursors to perfluoroalkylcarboxylic acids during biotransformation, have made the development of methods for the accurate analysis of these compounds necessary.

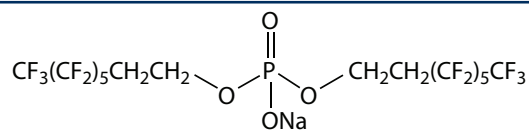
In response to customer requests, Wellington has produced both native and mass-labelled (^{13}C) reference standards for the 6:2 and 8:2 monoPAPs and diPAPs.



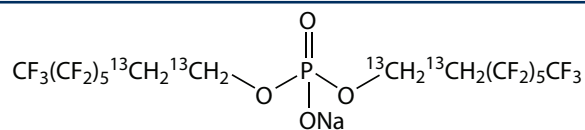
6:2PAP



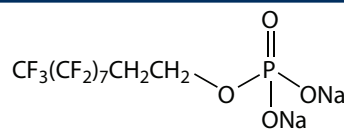
M2-6:2PAP



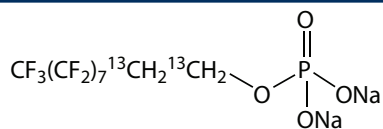
6:2diPAP



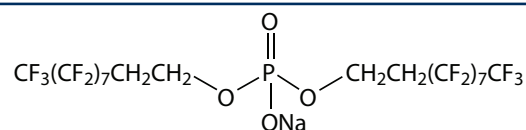
M4-6:2diPAP



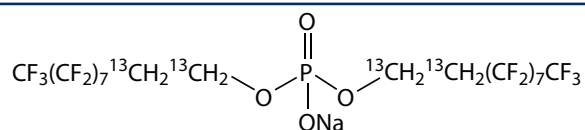
8:2PAP



M2-8:2PAP



8:2diPAP



M4-8:2diPAP



NATIVE MONO-SUBSTITUTED POLYFLUORINATED PHOSPHATE ESTERS

Catalogue Number	Product (methanol)	Qty	Conc
6:2PAP	Sodium 1H,1H,2H,2H-perfluorooctylphosphate	1.2 ml	50 µg/ml
8:2PAP	Sodium 1H,1H,2H,2H-perfluorodecylphosphate	1.2 ml	50 µg/ml

MASS-LABELLED MONO-SUBSTITUTED POLYFLUORINATED PHOSPHATE ESTERS

Catalogue Number	Product (methanol)	Qty	Conc
M2-6:2PAP	Sodium 1H,1H,2H,2H-[1,2- ¹³ C ₂]perfluorooctylphosphate	1.2 ml	50 µg/ml
M2-8:2PAP	Sodium 1H,1H,2H,2H-[1,2- ¹³ C ₂]perfluorodecylphosphate	1.2 ml	50 µg/ml

NATIVE DI-SUBSTITUTED POLYFLUORINATED PHOSPHATE ESTERS

Catalogue Number	Product (methanol)	Qty	Conc
6:2diPAP	Sodium bis(1H,1H,2H,2H-perfluorooctyl)phosphate	1.2 ml	50 µg/ml
8:2diPAP	Sodium bis(1H,1H,2H,2H-perfluorodecyl)phosphate	1.2 ml	50 µg/ml

MASS-LABELLED DI-SUBSTITUTED POLYFLUORINATED PHOSPHATE ESTERS

Catalogue Number	Product (methanol)	Qty	Conc
M4-6:2diPAP	Sodium bis(1H,1H,2H,2H-[1,2- ¹³ C ₂]perfluorooctyl)phosphate	1.2 ml	50 µg/ml
M4-8:2diPAP	Sodium bis(1H,1H,2H,2H-[1,2- ¹³ C ₂]perfluorodecyl)phosphate	1.2 ml	50 µg/ml

Distributed Throughout Europe and Middle East By-



Greyhound Chromatography & Allied Chemicals
6 Kelvin Park, Birkenhead,
Merseyside, CH41 1LT, U.K.
Tel: (+44)-0-151-649-4000 Fax: (+44)-0-151-649-4001
E-mail: info@greyhoundchrom.com
Web: www.greyhoundchrom.com

