

The ultimate in Grain Care



**BATCH
DRIERS**

BATCH DRIERS

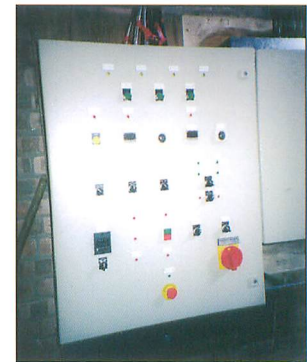
- The same construction and features as the Svegma continuous drier
- Wide range of models to suit application
- Shutter discharge
- Galvanised construction
- Clean internal grain column
- Static batch with quiet centrifugal fan
- Recirculating option for faster drying
- Simple single batch or fully automatic continuous batch
- Shutters allow drying of smaller batches
- Capacities 5 - 30 tonne batch
- Oil or gas fired, also indirect fired heater
- Hi-spec control panel with Digital Meters & shutdown system
- Suitable for all grains



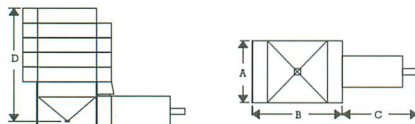
The Svegma batch drier is based on the same principle as the continuous flow drier and was first produced in the 1950's. Today's modern drier retains the basic design but has been developed to meet more exacting standards. It is capable of drying high moisture crops.

The drier is available in three basic widths to enable it to fit into existing buildings. It is built up in half metre modules for strength and ease of assembly. This also allows the drier to be easily extended at anytime.

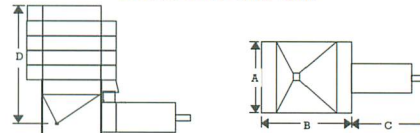
The size of the fan and heater are matched to the drier size to give the same fast drying rate on all sizes.



Series 3000



Series 2000 and 4000



Drier Model	Holding Capacity		Drying Capacity		Drying Rate		Fan Kw STATIC (Pressure)	Fan Kw RECIRC. (Suction)	Dimensions (mm)			
	M ³	Tonnes	Tonnes / 24 Hrs		Static	Recirc.			A	B	C	D
			70°C	90°C								
SVB 2004	8.2	6.0	50	65	3.3	4.0	5.5	5.5	1976	2980	1530	4125
SVB 2006	11.0	8.0	68	84	4.8	5.8	7.5	5.5	1976	2980	1585	5175
SVB 2008	13.8	10.0	86	106	6.3	7.6	7.5	7.5	1976	2980	2475	6225
SVB 2009	17.1	13.0	95	117	7.1	8.5	11.0	7.5	1976	2980	2495	7275
SVB 2011	19.9	15.0	112	136	8.6	10.3	15.0	7.5	1976	2980	2875	8325
SVB 3004	12.0	9.0	72	90	5.0	6.0	7.5	5.5	2924	2980	2420	4625
SVB 3006	16.0	12.0	95	115	7.3	8.7	11.0	7.5	2924	2980	2495	5675
SVB 3008	20.0	15.0	120	138	9.5	11.4	15.0	7.5	2924	2980	2875	6725
SVB 3009	24.8	19.0	136	160	10.6	12.8	18.5	11.0	2924	2980	2865	7775
SVB 4004	15.8	12.0	95	110	6.3	8.0	11.0	5.5	3860	2980	2495	4125
SVB 4006	21.1	16.0	128	146	9.0	12.0	18.5	7.5	3860	2980	2865	5175
SVB 4008	26.4	20.0	160	180	12.0	16.0	22.0	15.0	3860	2980	2935	6225
SVB 4009	29.1	22.0	175	198	13.0	18.0	30.0	18.5	3860	2980	2935	7275

Overall height of driers will vary dependant on fan arrangement and discharge height.

Furnace can be turned through 180° or ducted to drier to suit site.

Standard discharge height is 450mm. Actual 'C' dimension will vary depending on fan and furnace position.

Drying capacity includes cooling and assumes fill and empty rates of 55TPH

Drying rate is based on 4% moisture removal 20% to 16% with ambient temperature of 15°C and 70% RH.

Rates will vary depending on crop variety, cleanliness, maturity and ability of air to pass through it.

Further advice and information for specific requirements available on request.

In the interest of continued product development the Company reserves the right to alter the specification without prior notice or liability

BDC Systems Ltd.

Prospect Farm Monxton Andover Hants SP11 7DA

Tel: 01264 710900 Int: +44 1264 710900 Fax: 01264 710987 Int: +44 1264 710987

