

# TECTUS®

The completely concealed hinge system



# INDEX

## TECTUS® – The completely concealed hinge system

---

### MODEL VERSIONS FROM 40 TO 300 KG

6	<b>TE 205 3D</b>	40 kg	for unrebated and rebated flush residential doors
7	<b>TE 240 3D</b>	40 kg	for unrebated and rebated flush residential doors
8	<b>TE 305 3D</b>	60 kg	for unrebated residential doors
9	<b>TE 340 3D</b>	80 kg	for unrebated residential and heavy-duty doors
10	<b>TE 526 3D</b>	120 kg	made of solid stainless steel for unrebated heavy-duty doors
11	<b>TE 527 3D</b>	120 kg	made of solid steel for unrebated heavy-duty doors
12	<b>TE 540 3D</b>	120 kg	for unrebated heavy-duty doors
13	<b>TE 640 3D</b>	200 kg	for unrebated high performance heavy-duty doors
14	<b>TE 645 3D</b>	300 kg	for unrebated high performance heavy-duty doors

### Model versions for specific scope of applications

18	<b>TECTUS® Energy</b>		with permanent energy transfer
20	<b>TE 541 3D FVZ</b>	100 kg	for unrebated residential and heavy-duty doors with recessed frame facings
22	<b>TECTUS® A8</b>		for unrebated heavy-duty doors with claddings up to 8 mm
24	<b>TECTUS® FR</b>		Fire rated with integrated intumescent kit
26	<b>TE 380 3D</b>	60 kg	for rebated residential doors

### Fixing plates and receivers

28	<b>TE ... 3D FZ</b>		Fixing plate for residential and heavy-duty doors on casing frames
29	<b>TE ... 3D SZ</b>		Receiver for residential and heavy-duty doors on steel frames

30	Service		
----	---------	--	--

---

# TECHNICAL FEATURES

The TECTUS-brand fully concealed hinge system has been an integral part of the SIMONSWERK range since 2002. Thanks to its ongoing development, TECTUS is today more innovative and efficient than ever.

With the TECTUS hinge system, any door, from high-quality interior doors to large, heavy-duty doors, can be integrated into straight-lined and flush-fitting architectural structures. This well-established series has a wide range of applications, such as flush-fitting models for invisible frames, versions with built-in fire protection or designs with integrated energy transfer.

Its ability to withstand loads from 40 to 300 kg, an opening angle of 180 degrees, the use of frames in wood, steel and aluminium, its 3D adjustability, and maintenance-free slide bearings make TECTUS an exceptional hinge solution, both technically and aesthetically.

---

## TECTUS® - THE FULLY CONCEALED HINGE SYSTEM

- › for flush-fitting architectural structures
  - › with a load capacity of 40 to 300 kg
  - › with an opening angle of 180°
  - › for unrebated and rebated, flush-mounted doors
  - › for rebated doors
  - › for wood, steel and aluminium frames
  - › with maintenance-free slide bearing technology
- 





# DESIGN MEETS FUNCTION.

## A FULL RANGE OF CONCEALED HINGES

For applications ranging from high-quality interior doors to heavy sound-proof doors with special requirements in terms of load and performance, SIMONSWERK has for years provided a comprehensive product range including a wide choice of its fully concealed TECTUS brand.

All the models in the TECTUS-brand fully concealed hinge range for high-quality interior and functional heavy-duty doors have the same technical and visual features, and can be used with wood, steel and aluminium frames. They all have a uniform appearance, with a closed hinge body that hides the milling from view, and are available in a range of materials and attractive surface finishes.



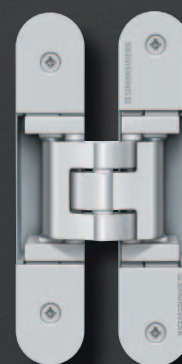
### TE 205 3D

Load capacity  
up to 40 kg



### TE 240 3D

Load capacity  
up to 40 kg



### TE 305 3D

Load capacity  
up to 60 kg



**Versions for special applications  
from page 16.**



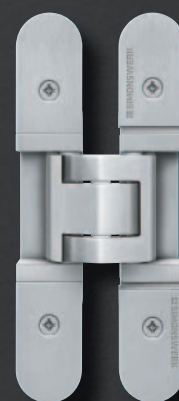
**TE 340 3D**

Load capacity  
up to 80 kg



**TE 526 3D**

Load capacity  
up to 120 kg



**TE 527 3D**

Load capacity  
up to 120 kg



**TE 540 3D**

Load capacity  
up to 120 kg



**TE 640 3D**

Load capacity  
up to 200 kg



**TE 645 3D**

Load capacity  
up to 300 kg

# TECTUS®

## TE 205 3D

for unrebated and rebated flush residential doors

**Hinge** **up to 40 kg**

### Product features

- completely concealed hinge system
- for timber, steel or aluminium frames
- for unrebated and rebated flush residential doors
- 3D adjustable (side +/- 3.0 mm, height +/- 2.5 mm, compression +/- 1.5 mm)
- maintenance-free slide bearings

### Technical Data

Load capacity	<b>i</b> 2 hinges per door leaf (1x2m)	40.0 kg
Overall length		140.0 mm
Width (frame)		21.0 mm
Width (door)		18.0 mm
Cutter diameter		16.0 mm
Opening angle		180°

### Finish

satin chrome look (F1), stainless steel look

### Combination

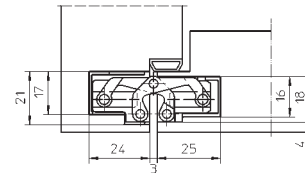
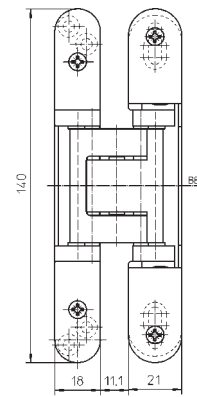
Receiver	Casing frame	TE 210 3D FZ/1
	Steel frame	TE 210 3D SZ

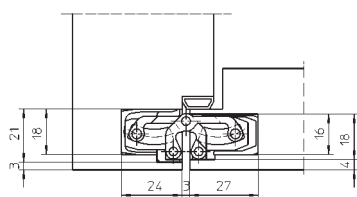
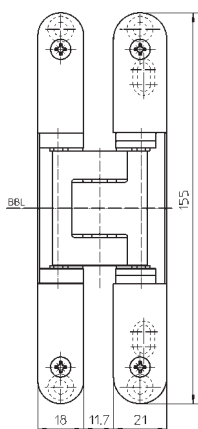
### Installation Tools

Jig	Universal milling frame Drilling jig TE 210 3D	
Frame	Template	No. 5 250663 6
Door	Template	No. 5 250664 6

### Note

**i** The load capacity mentioned above refers to the use of 2 hinges per door leaf (1 x 2 m).





## TE 240 3D

for unrebated and rebated flush residential doors

### Hinge

up to 40 kg

### Product features

- completely concealed hinge system
- for timber, steel or aluminium frames
- for unrebated and rebated flush residential doors
- sideways closed hinge body for a homogeneous mortise appearance
- with comfortable 3D adjustment (side +/- 3.0 mm, height +/- 3.0 mm, compression +/- 1.5 mm)
- maintenance-free slide bearings

### Technical Data

Load capacity	<b>i</b> 2 hinges per door leaf (1x2m)	40.0 kg
Overall length		155.0 mm
Width (frame)		21.0 mm
Width (door)		18.0 mm
Cutter diameter		16.0 mm
Opening angle		180°

### Finish

satin chrome look (F1), satin nickel look (F2), stainless steel look, polished brass, polished nickelled, bronze metallic, bronze finish, bronze finish light, bronze finish dark, powder-coated, other finishes available upon request

### Combination

Receiver	Casing frame	TE 240 3D FZ/1
	Steel frame	TE 240 3D SZ

### Installation Tools

Jig		Universal milling frame
Frame	Template	No. 5 250691 6
Door	Template	No. 5 250692 6

### Note

**i** The load capacity mentioned above refers to the use of 2 hinges per door leaf (1 x 2 m).

### Classification key

2	7	2	0	1	*	0	7
---	---	---	---	---	---	---	---

\*depending on the finish

# TECTUS®

## TE 305 3D

for unrebated residential doors

**Hinge** **up to 60 kg**

### Product features

- completely concealed hinge system
- for timber, steel or aluminium frames
- for unrebated residential doors
- 3D adjustable (side +/- 3.0 mm, height +/- 3.0 mm, compression +/- 1.0 mm)
- maintenance-free slide bearings

### Technical Data

Load capacity	<b>i</b> 2 hinges per door leaf (1x2m)	60.0 kg
Length (door)		141.0 mm
Length (frame)		140.0 mm
Width (frame)		29.0 mm
Width (door)		27,5 mm
Cutter diameter		24.0 mm
Opening angle		180°

### Finish

satin chrome look (F1), stainless steel look

### Combination

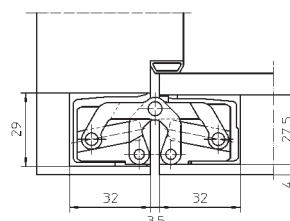
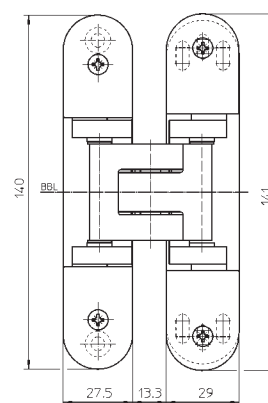
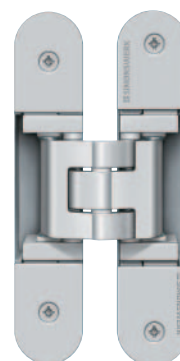
Receiver	Casing frame	TE 310 3D FZ/1
	Steel frame	TE 310 3D SZ

### Installation Tools

Jig		Universal milling frame
		Drilling jig TE 310 3D
Frame	Template	No. 5 250371 6
Door	Template	No. 5 250370 6

### Note

**i** The load capacity mentioned above refers to the use of 2 hinges per door leaf (1 x 2 m).







## TE 340 3D

for unrebated residential and heavy-duty doors

**Hinge** up to 80 kg

### Product features

- completely concealed hinge system
- for timber, steel or aluminium frames
- for unrebated residential and heavy duty doors
- sideways closed hinge body for a homogeneous mortise appearance
- with comfortable 3D adjustment (side +/- 3.0 mm, height +/- 3.0 mm, compression +/- 1.0 mm)
- maintenance-free slide bearings

### Technical Data

Load capacity	<b>i</b> 2 hinges per door leaf (1x2m)	80.0 kg
Overall length		160.0 mm
Width (frame)		28.0 mm
Width (door)		28.0 mm
Cutter diameter		24.0 mm
Opening angle		180°

### Finish

satin chrome look (F1), satin nickel look (F2), stainless steel look, polished brass, polished nickelled, bronze metallic, bronze finish, bronze finish light, bronze finish dark, powder-coated, other finishes available upon request

### Combination

Receiver	Casing frame	TE 340 3D FZ/1
	Steel frame	TE 340 3D SZ

### Installation Tools

Jig		Universal milling frame
Step 1	Template	No. 5 250693 5
Step 2	Template	No. 5 250694 5

### Functional areas

Fire resistance, Smoke resistance, Burglar resistance

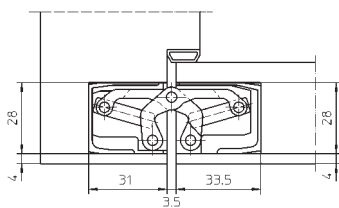
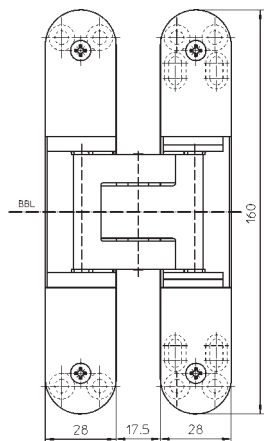
### Note

**i** The load capacity mentioned above refers to the use of 2 hinges per door leaf (1 x 2 m).

### Classification key

3	7	4	1	1	*	0	11a
---	---	---	---	---	---	---	-----

\*depending on the finish



# TECTUS®

## TE 526 3D

made of solid stainless steel for unrebated heavy-duty doors

**Hinge** up to 120 kg

### Product features

- Material stainless steel
- completely concealed hinge system
- for timber, steel or aluminium frames
- for unrebated residential and heavy duty doors
- 3D adjustable (side +/- 3.0 mm, height +/- 3.0 mm, compression +/- 1.0 mm)
- maintenance-free slide bearings

### Technical Data

Load capacity	<b>i</b> 2 hinges per door leaf (1x2m)	120.0 kg
Overall length		155.0 mm
Width (frame)		26.0 mm
Width (door)		26.0 mm
Cutter diameter		24.0 mm
Opening angle		180°

### Finish

Satin brushed stainless steel

### Combination

Receiver	Casing frame	TE 526 3D FZ/1
	Steel frame	TE 526 3D SZ

### Installation Tools

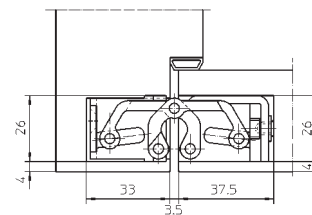
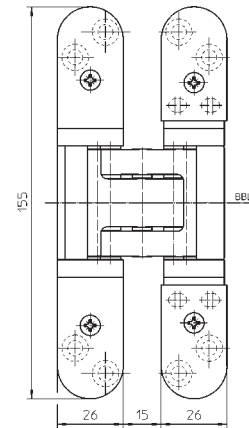
Jig		Universal milling frame
		Drilling jig TECTUS TE 526 3D
Frame/Door	Template	No. 5 250547 6

### Functional areas

Fire resistance, Smoke resistance, Soundproof, Burglar resistance

### Note

**i** The load capacity mentioned above refers to the use of 2 hinges per door leaf (1 x 2 m).





## TE 527 3D

made of solid steel for unrebated heavy-duty doors

**Hinge** up to 120 kg

### Product features

- Material solid steel
- completely concealed hinge system
- for timber, steel or aluminium frames
- for unrebated residential and heavy duty doors
- 3D adjustable (side +/- 3.0 mm, height +/- 3.0 mm, compression +/- 1.0 mm)
- maintenance-free slide bearings

### Technical Data

Load capacity	<b>i</b> 2 hinges per door leaf (1x2m)	120.0 kg
Overall length		155.0 mm
Width (frame)		26.0 mm
Width (door)		26.0 mm
Cutter diameter		24.0 mm
Opening angle		180°

### Finish

stainless steel look, other finishes available upon request

### Combination

Receiver	Casing frame	TE 527 3D FZ/1
	Steel frame	TE 527 3D SZ

### Installation Tools

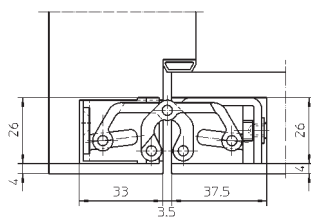
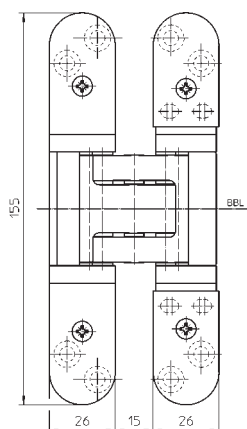
Jig	Universal milling frame
	Drilling jig TECTUS TE 527 3D
Frame/Door	Template No. 5 250547 6

### Functional areas

Fire resistance, Smoke resistance, Soundproof, Burglar resistance

### Note

**i** The load capacity mentioned above refers to the use of 2 hinges per door leaf (1 x 2 m).



# TECTUS®

## TE 540 3D

for unrebated heavy-duty doors

**Hinge** up to 120 kg

### Product features

- completely concealed hinge system
- for timber, steel or aluminium frames
- for unrebated heavy-duty doors
- sideways closed hinge body for a homogeneous mortise appearance
- with comfortable 3D adjustment (side +/- 3.0 mm, height +/- 3.0 mm, compression +/- 1.0 mm)
- maintenance-free slide bearings

### Technical Data

Load capacity	<b>i</b> 2 hinges per door leaf (1x2m)	120.0 kg
Overall length		200.0 mm
Width (frame)		32.0 mm
Width (door)		32.0 mm
Cutter diameter		24.0 mm
Opening angle		180°

### Finish

satin chrome look (F1), satin nickel look (F2), stainless steel look, polished brass, polished nickelled, powder-coated, other finishes available upon request

### Combination

Receiver	Casing frame	TE 540 3D FZ/1
	Steel frame	TE 540 3D SZ

### Installation Tools

Jig		Universal milling frame
Step 1	Template	No. 5 250680 5
Step 2	Template	No. 5 250681 5

### Functional areas

Fire resistance, Smoke resistance, Soundproof, Burglar resistance

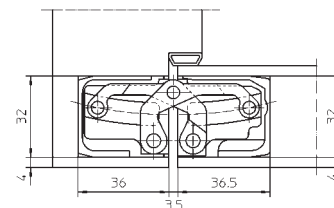
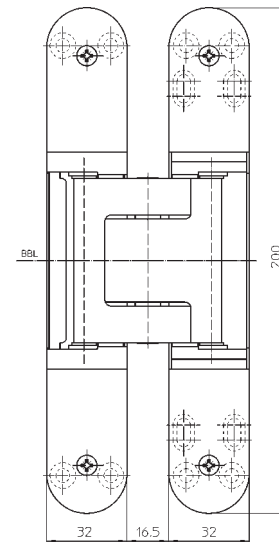
### Note

**i** The load capacity mentioned above refers to the use of 2 hinges per door leaf (1 x 2 m).

### Classification key

4	7	6	1	1	*	1	13
---	---	---	---	---	---	---	----

\*depending on the finish







## TE 640 3D

for unrebated high performance heavy-duty doors

**Hinge** **up to 200 kg**

### Product features

- completely concealed hinge system
- for timber, steel or aluminium frames
- for unrebated high performance heavy-duty doors
- sideways closed hinge body for a homogeneous mortise appearance
- with comfortable 3D adjustment (side +/- 3.0 mm, height +/- 3.0 mm, compression +/- 1.0 mm)
- maintenance-free slide bearings

### Technical Data

Load capacity	<b>i</b> 2 hinges per door leaf (1x2m)	200.0 kg
Overall length		240.0 mm
Width (frame)		32.0 mm
Width (door)		32.0 mm
Cutter diameter		24.0 mm
Opening angle		180°

### Finish

satin chrome look (F1), satin nickel look (F2), stainless steel look, polished brass, polished nickelled, powder-coated, other finishes available upon request

### Combination

Receiver	Casing frame	TE 640 3D FZ/1
	Steel frame	TE 640 3D SZ

### Installation Tools

Jig		Universal milling frame
Step 1	Template	No. 5 250659 5
Step 2	Template	No. 5 250689 5

### Functional areas

Fire resistance, Smoke resistance, Soundproof, Burglar resistance

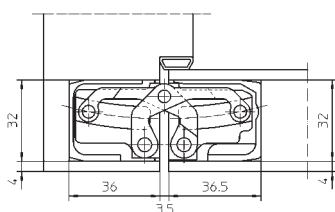
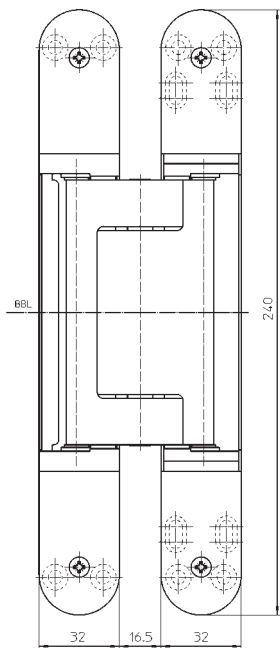
### Note

**i** The load capacity mentioned above refers to the use of 2 hinges per door leaf (1 x 2 m).

### Classification key

4	7	8	1	1	*	1	15
---	---	---	---	---	---	---	----

\*depending on the finish



### QUALITY MARKS



### FUNCTIONAL AREAS



# TECTUS®

## TE 645 3D

for unrebated high performance heavy-duty doors

<b>Hinge</b>		<b>up to 300 kg</b>
--------------	--	---------------------

### Product features

- completely concealed hinge system
- for timber, steel and aluminium frames
- for unrebated high performance heavy-duty doors
- sideways closed hinge body for a homogeneous mortise appearance
- with comfortable 3D adjustment (side +/- 3.0 mm, height +/- 3.0 mm, compression +/- 1.0 mm)
- maintenance-free slide bearings

### Technical Data

Load capacity	<b>i</b> 2 hinges per door leaf (1x2m)	300.0 kg
Length (door)		280.0 mm
Length (frame)		260.0 mm
Width (frame)		36.0 mm
Width (door)		34.0 mm
Cutter diameter		24.0 mm
Opening angle		180°

### Finish

satin chrome look (F1), stainless steel look, other finishes available upon request

### Combination

Receiver	Steel frame	TE 645 3D SZ
----------	-------------	--------------

### Installation Tools

Jig		Universal milling frame long
Frame, Step 1	Template	No. 5 250945 5
Frame, Step 2	Template	No. 5 250946 5
Door, Step 1	Template	No. 5 250947 5
Door, Step 2	Template	No. 5 250948 5

### Functional areas

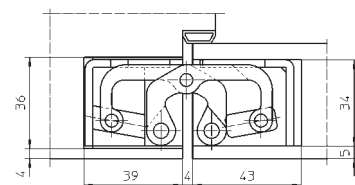
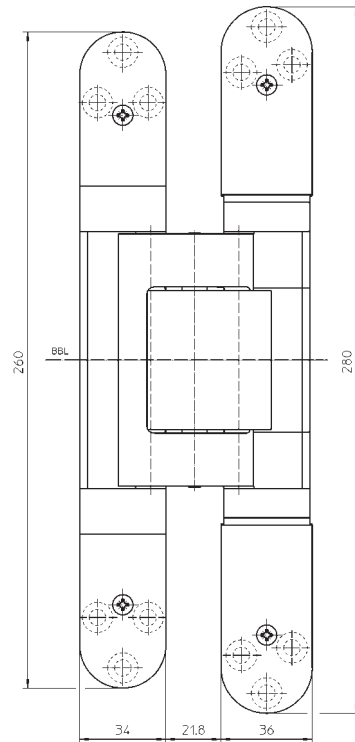
Fire resistance, Smoke resistance, Soundproof, Burglar resistance

### Note

**i** The load capacity mentioned above refers to the use of 2 hinges per door leaf (1 x 2 m).

### Classification key

4	7	9	1	1	4	1	16
---	---	---	---	---	---	---	----



#### QUALITY MARKS



#### FUNCTIONAL AREAS







**MUSIC THEATRE LINZ**

ARCHITECT: Terry Pawson, London

SIMONSWERK: TECTUS® TE 640 3D, TECTUS® TE 640 3D Energy



# TECTUS® VERSIONS FOR SPECIAL APPLICATIONS

Special architectural situations, problematic spatial challenges or unusual planning tasks require individual solutions. The solutions presented here by SIMONSWERK complete the TECTUS product range.



## **TECTUS® Energy**

Energy with permanent energy transfer,  
load capacities of 40 to 300 kg



## **TECTUS® FVZ**

for constructions with recessed  
frame facings, load capacity  
up to 100 kg





**TECTUS® A8**

for doors with claddings up to 8 mm  
load capacities of 100 to 160 kg



**TECTUS® FR**

with integrated intumescent kit  
load capacities of 80 to 200 kg



**TECTUS® rebated**

for rebated doors  
load capacity up to 60 kg

# TECTUS® ENERGY

## ENERGY TRANSFER: INTEGRATED AND PERMANENT

Energy transfer is crucially important in the installation and operation of electric components in high-quality doors. With TECTUS Energy, the door leaf receives a guaranteed and permanent energy supply from the frame, without weakening the structure of either the door or the frame. The technology provided by TECTUS Energy offers compatibility with all the most popular designs for locks and fittings.

### UNIVERSAL ADAPTER

- › compatibility with all the most popular designs for locks and fittings
- › three different plug connections (round cable, universal adapter, adapter 1)

### CLIP

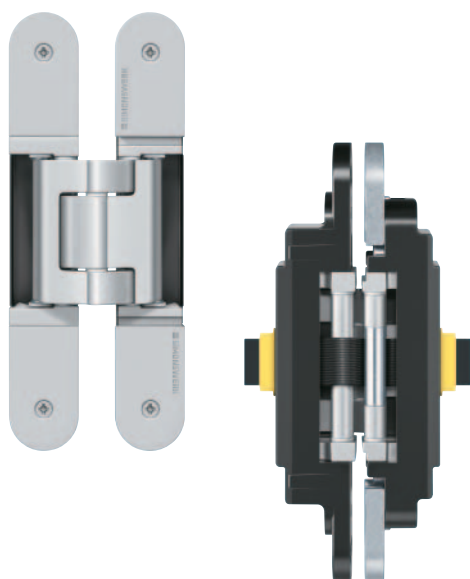
- › secure connection between cable and hinge housing
- › high functional reliability and fitness for purpose thanks to a closed system

### FLAT RIBBON CABLE

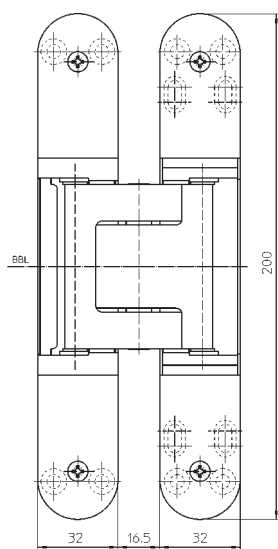
- › 16-wire ribbon cable
- › integrated permanent energy transfer
- › entirely enclosed in the housing (closed system)



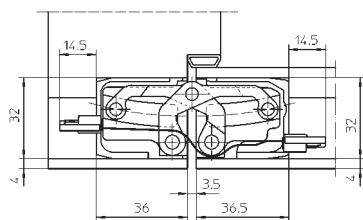
To find out more about TECTUS Energy download the brochure now at [www.simonswerk.com](http://www.simonswerk.com). We will also be happy to send it to you by post.



e.g. TE 540 3D Energy



e.g. TE 540 3D Energy



e.g. TE 540 3D Energy

## TECTUS Energy

with permanent energy transfer for unrebated doors - with new snap-fitting connection

<b>Hinge</b>	<b>Energy transfer</b>	<b>40 – 300 kg</b>
--------------	------------------------	--------------------

### Product features

- with permanent energy transfer
- individual connection adapter options
- completely concealed hinge system
- for timber, steel or aluminium frames
- for unrebated heavy-duty doors
- with comfortable 3D adjustment (side +/- 3.0 mm, height +/- 3.0 mm, compression +/- 1.0 mm)
- maintenance-free slide bearings


### Technical Data

No. of wires/wire cross section	16 pieces/0.14 mm <sup>2</sup>
Max. voltage	50 V (voltage source acc. SELV-DIN EN 61140)
Max. current	0.8 A (per wire)
Opening angle	180°

### Finish

satın chrome look (F1), stainless steel look, other finishes available upon request


### Combination

Receiver	Casing frame	TE ... 3D FZ
	Steel frame	TE ... 3D SZ
Accessories	 Round cable	16 x 0,8 A power universal use for all applications cable lengths 3 m or 10 m torsion-proof and snap-fitting connection system
		Universal adapter 3 x 3,2 A and 4 x 0,8 A power for direct connection of different power collectors torsion-proof and snap-fitting connection system
		Adapter 1 3 x 3,2 A and 4 x 0,8 A power special adapter for connecting FUHR motor locks plug-and-play version
		torsion-proof and snap-fitting connection system
		torsion-proof and snap-fitting connection system

### Functional areas

Fire resistance, Smoke resistance, Soundproof, Burglar resistance

### Note

 The load capacity mentioned above refers to the use of 2 hinges per door leaf (1 x 2 m). Please specify accessories when ordering.

### Classification key

4	7	6	1	1	*	1	13
---	---	---	---	---	---	---	----

\*depending on the finish

### Available options

TE 240 3D Energy	Load capacity up to 40 kg
TE 340 3D Energy	Load capacity up to 80 kg
TE 526 3D Energy	Load capacity up to 120 kg
TE 540 3D Energy	Load capacity up to 120 kg
TE 640 3D Energy	Load capacity up to 200 kg
TE 645 3D Energy	Load capacity up to 300 kg
TE 540 3D A8 Energy	Load capacity up to 100 kg
TE 640 3D A8 Energy	Load capacity up to 160 kg

Detailed information in our PRODUCTSELECTOR at [www.simonswerk.com](http://www.simonswerk.com)

QUALITY MARKS



FUNCTIONAL AREAS





# TECTUS® FVZ

## INTEGRATION OF DOOR SET INTO SURROUNDING WALL WITHOUT A VISIBLE FRAME

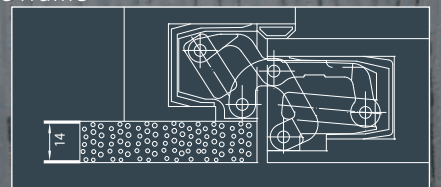
TE 541 3D FVZ is a new version in which the frame part is offset to the sash part therefore a door with a fully concealed hinge can be integrated into the surrounding wall without any visible frame. The frame facing can be set back by up to 14 mm, to allow the door and wall sets to create a flush-fitting whole.



Load capacity of up to 100 kg

for a 14-mm-recessed frame facing

for a surrounding wall without a visible frame







## TE 541 3D FVZ

for unrebated residential and heavy-duty doors with recessed frame facings

**Hinge** **up to 100 kg**

### Product features

- FVZ = 14 mm recessed frame facings
- completely concealed hinge system
- for timber, steel or aluminium frames
- for unrebated heavy-duty doors
- sideways closed hinge body for a homogeneous mortise appearance
- with comfortable 3D adjustment (side +/- 3.0 mm, height +/- 3.0 mm, compression +/- 1.0 mm)
- maintenance-free slide bearings

### Technical Data

Load capacity	<b>i</b> 2 hinges per door leaf (1x2m)	100.0 kg
Overall length		185.0 mm
Width (frame)		28.0/33.0 mm
Width (door)		28.0/32.0 mm
Cutter diameter		24.0 mm
Opening angle		180°

### Finish

satın chrome look (F1), stainless steel look, other finishes available upon request

### Combination

Receiver	Steel frame	TE 541 3D FVZ SZ
----------	-------------	------------------

### Installation Tools

Jig		Universal milling frame
Frame, Step 1	Template	No. 5 250942 5
Frame, Step 2	Template	No. 5 250943 5
Frame, Step 3	Template	No. 5 250682 5
Door, Step 1	Template	No. 5 250942 5
Door, Step 2	Template	No. 5 250943 5
Door, Step 3	Template	No. 5 250944 5

### Functional areas

Fire resistance, Smoke resistance, Soundproof

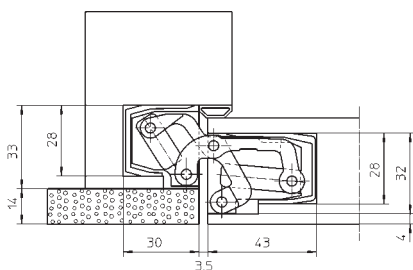
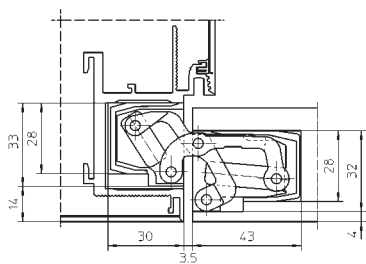
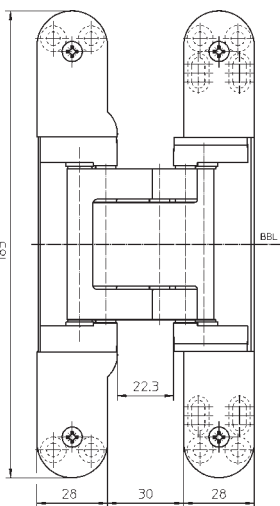
### Note

**i** The load capacity mentioned above refers to the use of 2 hinges per door leaf (1 x 2 m).

### Classification key

4	7	5	1	1	*	0	12
---	---	---	---	---	---	---	----

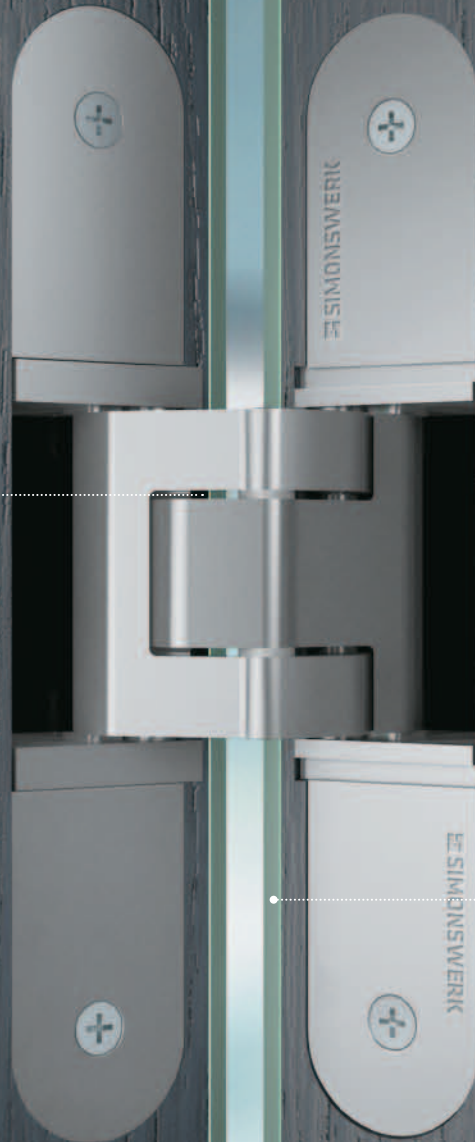
\*depending on the finish



# TECTUS® A8 CLADDING ON THE DOOR AND FRAME CONSTRUCTION

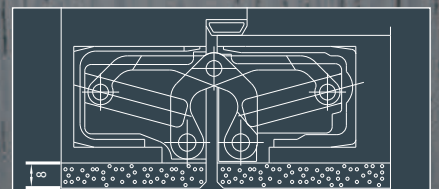
“A8” versions provide new application possibilities as they can accommodate cladding of up to 8 mm on the door and frame construction. This gives the designer more scope when integrating the door set into the overall interior design concept.

Load capacity of up to 100 kg



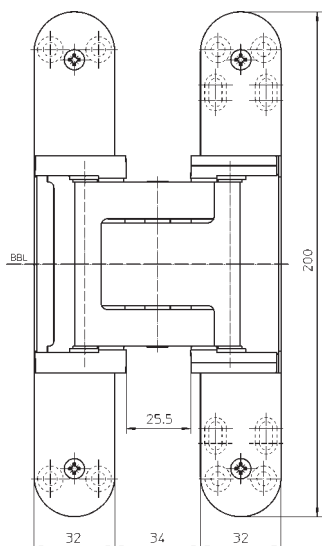
for claddings on door and  
frame of up to 8 mm

The use of different materials  
such as wood, glass, etc are  
possible within door and frame  
construction

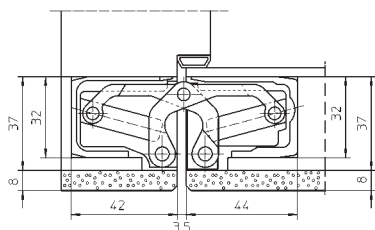




e.g. TE 540 3D A8



e.g. TE 540 3D A8



e.g. TE 540 3D A8

## TECTUS A8

for unrebated heavy-duty doors with claddings up to 8 mm

<b>Hinge</b>		<b>100 – 160 kg</b>
--------------	--	---------------------

### Product features

- claddings up to 8 mm
- completely concealed hinge system
- for timber, steel or aluminium frames
- for unrebated heavy-duty doors
- sideways closed hinge body for a homogeneous mortise appearance
- with comfortable 3D adjustment (side +/- 3.0 mm, height +/- 3.0 mm, compression +/- 1.0 mm)
- maintenance-free slide bearings

### Finish

satın chrome look (F1), satin nickel look (F2), stainless steel look, polished brass, polished nickelled, powder-coated, other finishes available upon request

### Combination

Receiver	Casing frame	TE ... 3D FZ
	Steel frame	TE ... 3D A8 SZ
Accessories	Cover plate set	TE 540/640 3D A8 radius

### Functional areas

Fire resistance, Smoke resistance, Soundproof, Burglar resistance

### Note

**i** The load capacity mentioned above refers to the use of 2 hinges per door leaf (1 x 2 m).

### Classification key

4	7	5	1	1	*	1	12a
---	---	---	---	---	---	---	-----

\*depending on the finish

### Available options

TE 540 3D A8	Load capacity up to 100 kg
TE 640 3D A8	Load capacity up to 160 kg

Detailed information in our PRODUCTSELECTOR at [www.simonswerk.com](http://www.simonswerk.com)

#### QUALITY MARKS



#### FUNCTIONAL AREAS



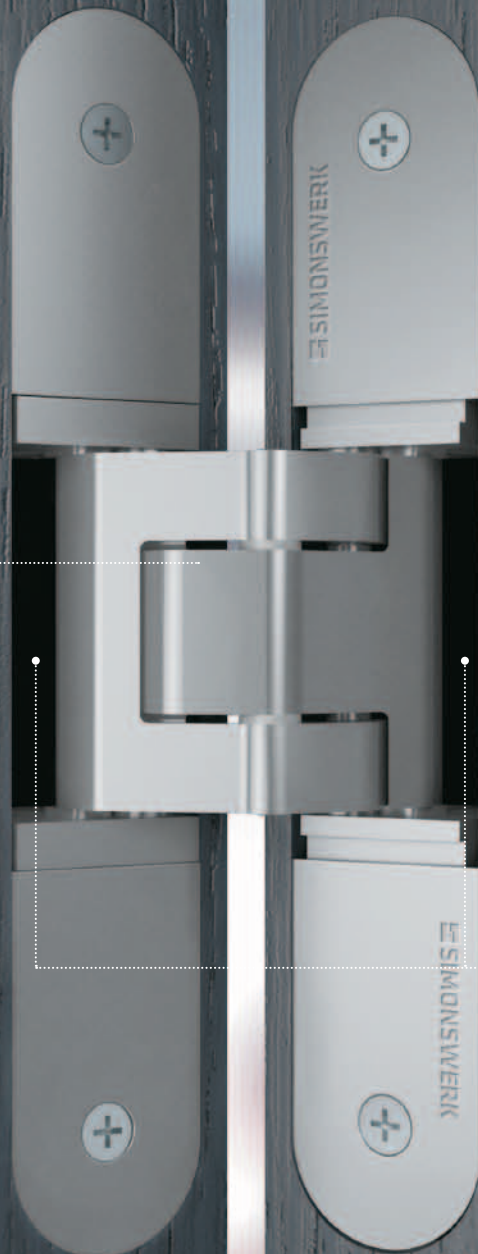


# TECTUS® FR

## FIRE RATED WITH INTEGRATED INTUMESCENT KIT

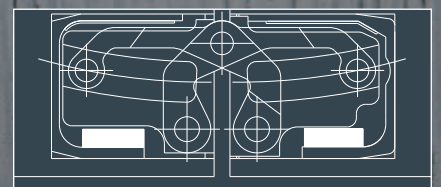
The TECTUS hinge system with integrated intumescent kit protects against fire and smoke escaping into a neighbouring room. In case of a fire or the production of smoke, the intumescent kit swells, sealing the door around the hinges.

Load capacity of 80 - 200 kg



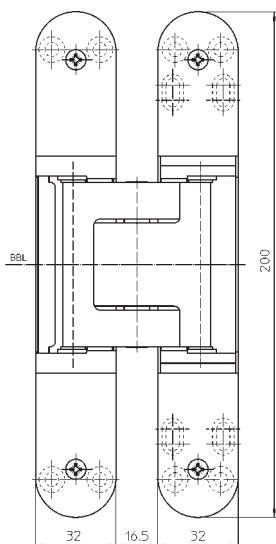
### with integrated intumescent kit

The intumescent kit seals the hinge mortise in case of a fire.

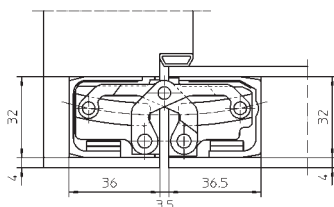




e.g. TE 540 3D FR



e.g. TE 540 3D FR



e.g. TE 540 3D FR

## TECTUS FR

with integrated intumescent kit for unrebated heavy-duty doors

Hinge	Fire resistance	80 – 200 kg
-------	-----------------	-------------

### Product features

- with integrated intumescent kit
- completely concealed hinge system
- for timber, steel or aluminium frames
- for unrebated heavy-duty doors
- sideways closed hinge body for a homogeneous mortise appearance
- with comfortable 3D adjustment (side +/- 3.0 mm, height +/- 3.0 mm, compression +/- 1.0 mm)
- maintenance-free slide bearings

### Finish

satın chrome look (F1), stainless steel look, other finishes available upon request

### Combination

Receiver	Casing frame	TE ... 3D FZ/1
	Steel frame	TE ... 3D SZ

### Functional areas

Fire resistance, Smoke resistance, Soundproof, Burglar resistance

### Note

**i** The load capacity mentioned above refers to the use of 2 hinges per door leaf (1 x 2 m).

### Classification key

4	7	5	1	1	*	1	13
---	---	---	---	---	---	---	----

\*depending on the finish

### Available options

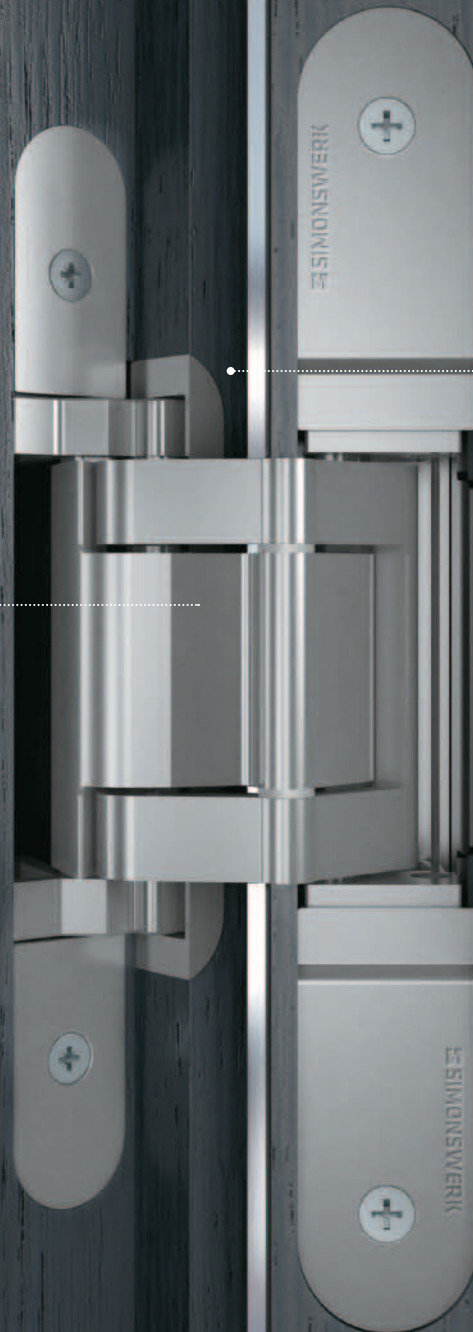
TE 340 3D FR	Load capacity up to 80 kg
TE 540 3D FR	Load capacity up to 120 kg
TE 640 3D FR	Load capacity up to 200 kg
TE 540 3D A8 FR	Load capacity up to 100 kg
TE 640 3D A8 FR	Load capacity up to 160 kg

Detailed information in our PRODUCTSELECTOR at [www.simonswerk.com](http://www.simonswerk.com)



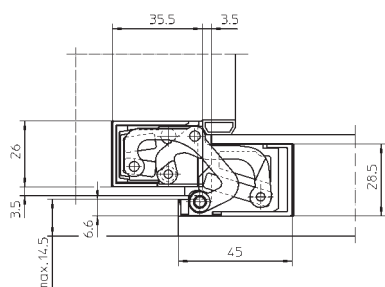
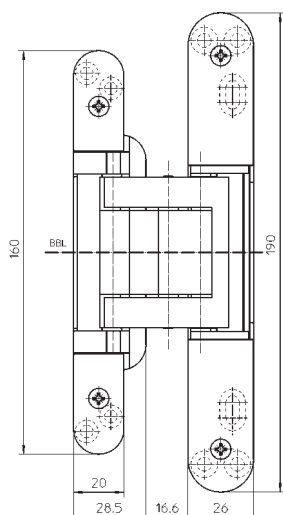
# TECTUS® REBATED FOR REBATED INTERIOR DOORS

SIMONSWERK also offer within the TECTUS brand a solution for rebated door leaves. The concealed hinge system is completely invisible when the door is closed. The hinge joint's special geometry means it can be installed in the rebated door leaf with a receiver in the wood, steel or aluminium frame.



Load capacity up to 60 kg

for rebated interior doors



## TE 380 3D

for rebated residential doors

### Hinge

up to 60 kg

### Product features

- completely concealed hinge system
- for timber, steel or aluminium frames
- for rebated residential doors
- sideways closed hinge body for a homogeneous mortise appearance
- with comfortable 3D adjustment (side +/- 3.0 mm, height +/- 3.0 mm, compression +/- 1.0 mm)
- maintenance-free slide bearings

### Technical Data

Load capacity	<b>i</b> 2 hinges per door leaf (1x2m)	60.0 kg
Overall length		190.0 mm
Width (frame)		26.0 mm
Width (door)		20.0 mm
Cutter diameter		20.0 mm
Opening angle		180°

### Finish

satin chrome look (F1), stainless steel look, other finishes available upon request

### Combination

Receiver	Casing frame	TE 380 3D FZ/1
	Steel frame	TE 380 3D SZ

### Installation Tools

Jig		Universal milling frame
Frame, Step 1	Template	No. 5 250955 5
Frame, Step 2	Template	No. 5 250956 5
Frame, Step 3	Template	No. 5 250957 5
Door, Step 1	Template	No. 5 250958 5
Door, Step 2	Template	No. 5 250959 5

### Note

**i** The load capacity mentioned above refers to the use of 2 hinges per door leaf (1 x 2 m).

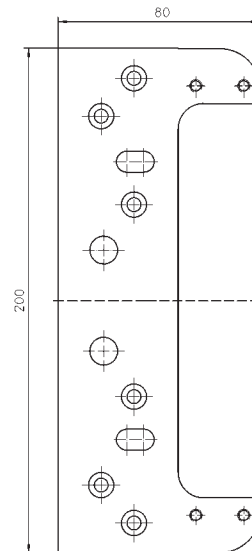
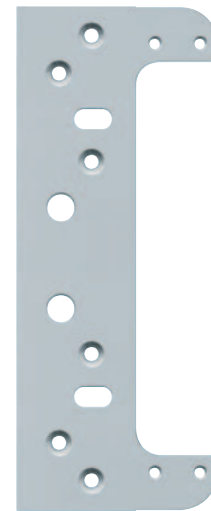
# TECTUS®

## Fixing plate TECTUS TE ... 3D FZ

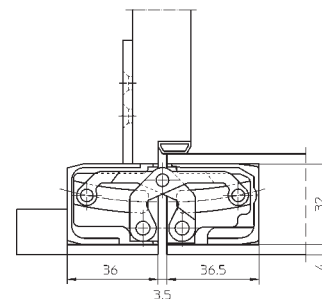
for residential and heavy-duty doors with casing frames

Receiver	Casing frame
<b>Finish</b> galvanised	
<b>Combination</b>	
Hinge	TE 205 3D TE 240 3D TE 305 3D TE 340 3D TE 380 3D TE 526 3D TE 527 3D TE 540 3D TE 640 3D TE 540 3D A8 TE 640 3D A8
with permanent energy transfer	TE 240 3D Energy TE 340 3D Energy TE 526 3D Energy TE 540 3D Energy TE 640 3D Energy TE 540 3D A8 Energy TE 640 3D A8 Energy
with intumescent kit	TE 340 3D FR TE 540 3D FR TE 640 3D FR TE 540 3D A8 FR TE 640 3D A8 FR

**Note**  
Spacers for casing strengths 22-28 mm are included.  
Please specify the exact hinge in your order.



e.g. TE 540 3D FZ



e.g. TE 540 3D with TE 540 3D FZ



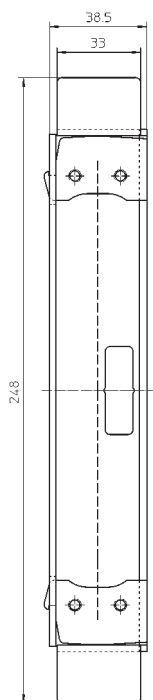
## Receiver TECTUS TE ... 3D SZ

for residential and heavy-duty doors with steel frames

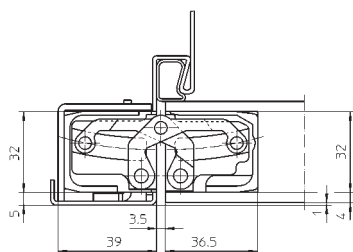
Receiver	Steel frame
----------	-------------

**Finish**  
galvanised, untreated/raw stainless steel

<b>Combination</b>	
Hinge	TE 205 3D
	TE 240 3D
	TE 305 3D
	TE 340 3D
	TE 380 3D
	TE 526 3D
	TE 527 3D
	TE 540 3D
	TE 541 3D FVZ
	TE 640 3D
	TE 645 3D
	TE 540 3D A8
	TE 640 3D A8
	with permanent energy transfer
	TE 340 3D Energy
	TE 526 3D Energy
	TE 540 3D Energy
	TE 640 3D Energy
	TE 645 3D Energy
	TE 540 3D A8 Energy
	TE 640 3D A8 Energy
with intumescent kit	TE 340 3D FR
	TE 540 3D FR
	TE 640 3D FR
	TE 540 3D A8 FR
	TE 640 3D A8 FR



e.g. TE 540 3D SZ



e.g. TE 540 3D with TE 540 3D SZ

**Note**  
Please specify the exact hinge in your order.

# SERVICE – COMPREHENSIVE EXPERTISE FOR YOUR DAILY WORK

We are happy to provide you with all the documentation you need to calculate which is the most suitable hinge system for your requirements. Please contact us: we would be delighted to work with you to choose the best solution – from high-quality standard sets right up to the most complex solutions.

Please visit our home page for any information not included in this brochure. You will find it easy to navigate through our user-friendly website to arrive at the detailed, comprehensive solutions.

All our brochures and data sheets can be requested in a printed version, or you can simply download them on the spot – and the same applies to our fitting instructions and milling data.

---

## **VISIT OUR PRODUCT SELECTOR**

Whether you are a manufacturer, trade partner or designer, at [www.simonswerk.com](http://www.simonswerk.com) you can find precise, detailed product descriptions that will help you to choose the most suitable hinge systems.





COMPANY

PRODUCTSELECTOR

ARCHITECTURE

[PRODUCTS](#) | [INSTALLATION TOOLS](#) | [TECHNICAL INFORMATION](#)

You are here: Productselector

## Quick search

## Brand

## Topic

## Novelties

## scope of application

- heavy-duty door  
 residential door  
 entrance door  
 window  
 metalworking

## function range

- finger protection  
 fire resistance, smoke resistance  
 soundproof  
 burglar resistance

## product type

- hinge  
 cover angle  
 accessories  
 receiver

## type of door leaf

- timber  
 metal  
 glass  
 PVCu  
 aluminium

## rebate

- rebated  
 rebated flush  
 unrebated

## type of frame

- blind frame  
 block frame  
 casing frame  
 steel frame  
 aluminium frame

## door weight (kg)

<input type="checkbox"/> 0-19	<input type="checkbox"/> 101-120
<input type="checkbox"/> 20-40	<input type="checkbox"/> 121-160
<input type="checkbox"/> 41-80	<input type="checkbox"/> 161-200
<input type="checkbox"/> 81-100	<input type="checkbox"/> 201-300



## Technical information

Assistance in selecting the proper hinge for different applications.

[→ read more](#)



## TECTUS Energy

Integrated and permanent energy transfer without ignoring the flush interior design.

[→ view model versions](#)



## Novelties - Between door and frame

New hinge systems for applications on heavy-duty, residential and entrance doors.

[→ view model versions](#)

## CONTAINS

TE 205 3D	TECTUS® Energy
TE 240 3D	TECTUS® FVZ
TE 305 3D	TECTUS® A8
TE 340 3D	TECTUS® FR
TE 526 3D	TECTUS® rebated
TE 527 3D	
TE 540 3D	
TE 640 3D	
TE 645 3D	

PLEASE VISIT OUR PRODUCTSELECTOR ON:  
[www.simonswerk.co.uk](http://www.simonswerk.co.uk)



### **SIMONSWERK UK Ltd.**

Burcot Works, Spring Street  
Tipton, West Midland DY4 8TF  
United Kingdom

Phone +44 (0)121 522 2848

Fax +44 (0)121 557 7042

[sales@simonswerk.co.uk](mailto:sales@simonswerk.co.uk)

[www.simonswerk.co.uk](http://www.simonswerk.co.uk)