

t1 litterbin



Above, t1 litterbin in open position for emptying (rigid plastic liner removed). **Right,** t1 in bright white with stainless steel pole.



description

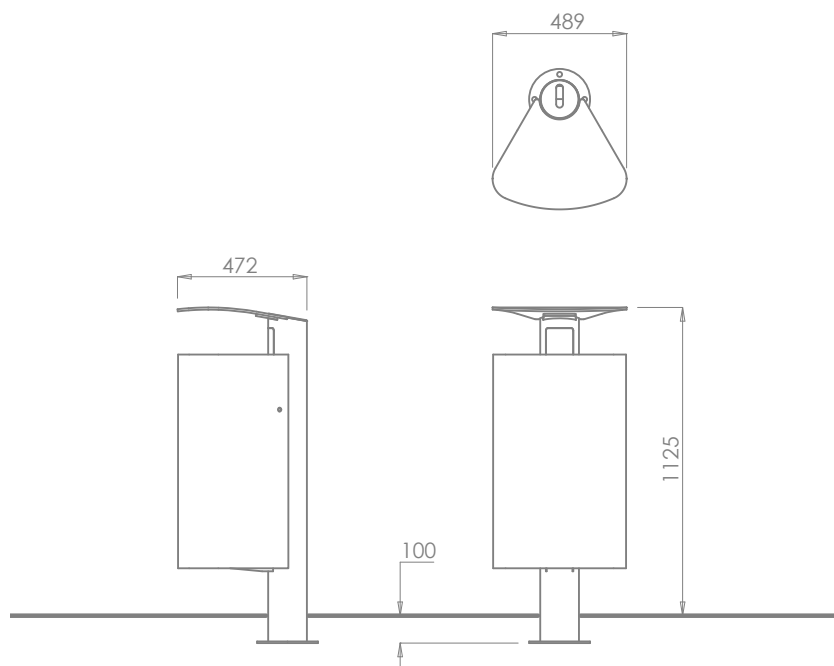
Aluminium body with powder coated finish mounted on 316 grade stainless steel pole. Rain shield hood formed from aluminium with powder coated finish. Integrated ashtray (in pole) and heavy duty 70L moulded plastic liner. Heavy duty slam latch. Forward tilting body, gas strut controlled with liner lifter for ease of emptying. Below ground flange mounted for discrete level fixing.

dimensions

Height 1125mm, width 489mm, depth 472mm.
Capacity 70L.
Weight 62Kg.

options

Choice of colours
Choice of decal.



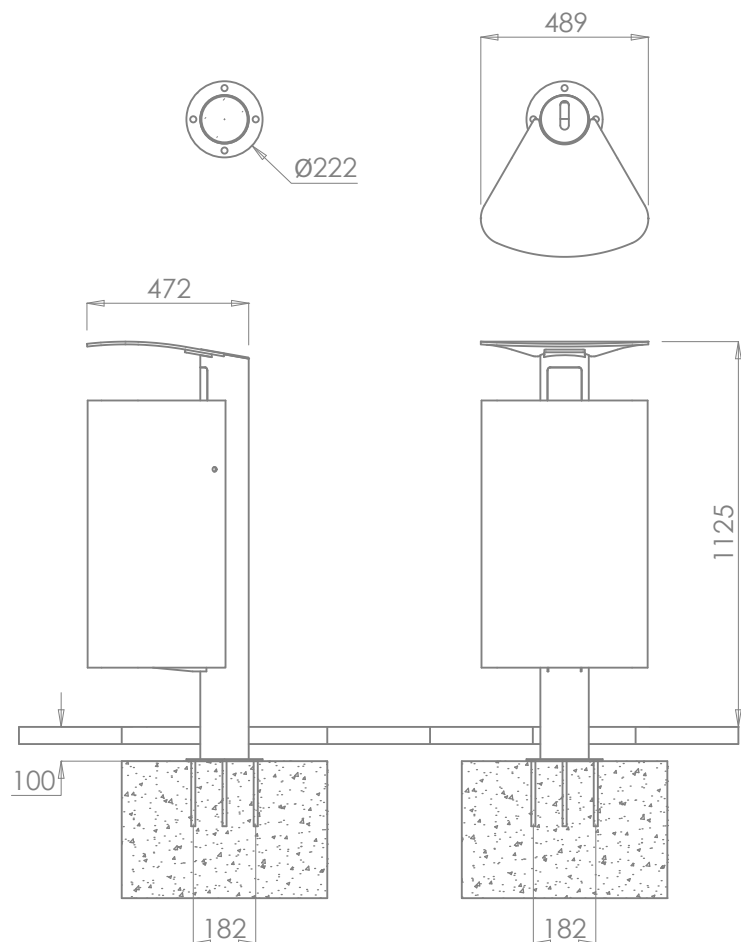
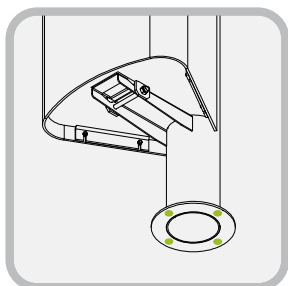
t1 Fixing Instructions

(for areas already paved)

- 1 Determine the location for the bin. Remove pavers and excavate a hole to minimum dimensions of L600 x W600 x D400mm. The size of the foundation may vary depending on the ground conditions.
- 2 Fill the hole with 35N20 concrete up to 100mm below the level of the underside of the pavers ensuring a good smooth surface finish.
- 3 Allow sufficient time for the concrete to set.
- 4 Place the bin in the desired location and mark through the fixing holes making sure this is done accurately.
- 5 Remove the bin and drill into the concrete pad. Drill following fixing manufacturer's instructions to suit the chosen fixing. Use M12 through bolts to fix (such as Hilti HSA M12 x 120).
- 6 Insert the fixings into the ground following fixing manufacturer's instructions and then reposition the bin. Screw on and tighten the nuts.
- 7 Where necessary cut the paving slabs and reinststate ensuring that they are well bedded in.
- 8 Render neatly around post with non-shrink grout, removing any grout residue.

Foundations

Foundations must be to engineer's specification.



Right and above, fixing details.

t1 Care and Maintenance Guidelines

The t1 litterbin is constructed from polyester powder coated aluminium mounted on a 316 grade stainless steel pole. The materials have been selected for their excellent outdoor durability as well as their aesthetic properties.

Some care is required to maintain the product's original appearance. The extent to which maintenance is required will depend on a number of factors including environmental conditions, construction activity and level of use.

Maintaining the painted aluminium

The t1 litterbin is finished in polyester powder, a plastic coating which is baked onto the components prior to assembly. This is a highly durable finish which will last for many years. To maintain the original appearance of the metalwork it should be cleaned regularly using warm soapy water.

Avoid the use of abrasive cleaners as they may damage the surface finish. Should the paint become chipped or scratched it can be touched up using acrylic based paint. Where the surface becomes damaged clean with a wire brush or sand, then paint with a spirit or synthetic based top coat. For further advice contact Omos on + 353 45 899802.

Maintaining the stainless steel components

Prior to shipping all our stainless steel has been passivated to ASTM A380 and ASTM 976 01-8.1 to ensure the highest standard.

Clean the stainless steel components using warm water with a mild detergent with a non abrasive cloth or sponge. Heavier stains may require the use of a nylon scouring pad. As a rule always start with the least severe method of cleaning as the use of scouring pads or scotch bright may result in altering the surface texture. In the case of brushed finishes the surface consists of uniform fine 'scratches' running in one direction so where abrasive cleaning is required always use a straight back and forward rubbing action in the direction of the grain.

Rust spots or 'tea stains' can occur on the surface of the material, these are normally caused by contamination from ordinary mild steel, particular in areas where construction work has been undertaken. Such stains can be removed using an abrasive pad as described above.

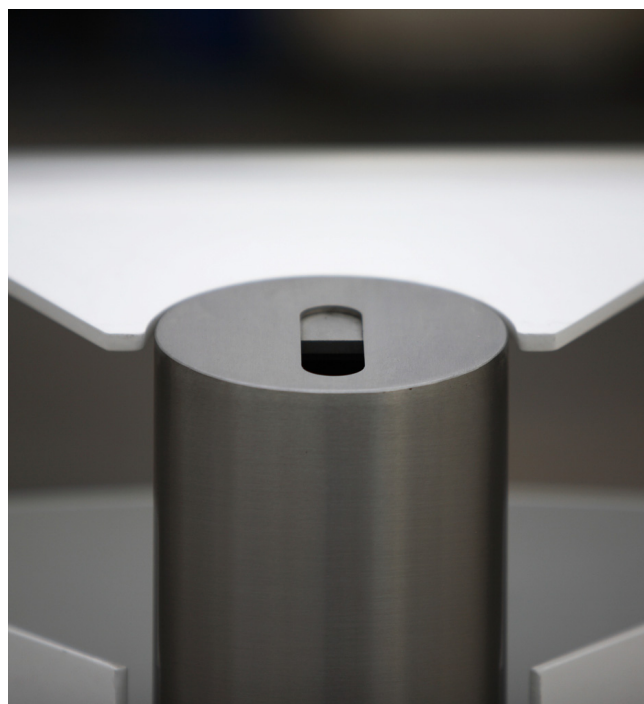
In cases where the surface is severely stained as a result of severe environmental conditions or scratched due to misuse, it may still be possible to restore the original finish. Contact Omos for advice on such issues. There are many stainless steel polishes available to enhance the surface finish. Omos recommends 'Avesta Finishing chemicals' and can advise where to purchase.

Liner

The t1 litterbin is equipped with a plastic liner. To prolong the life of the liner Omos recommends using plastic bin liners. This will also prevent seepage of liquids onto the surrounding pavement.

Locks, hinges and other moving parts

All moving parts should be kept clean and lubricated to ensure a long life. A spray lubricant such as 'WD40' is widely available and well suited.



Right, t1 litterbin lid detail.