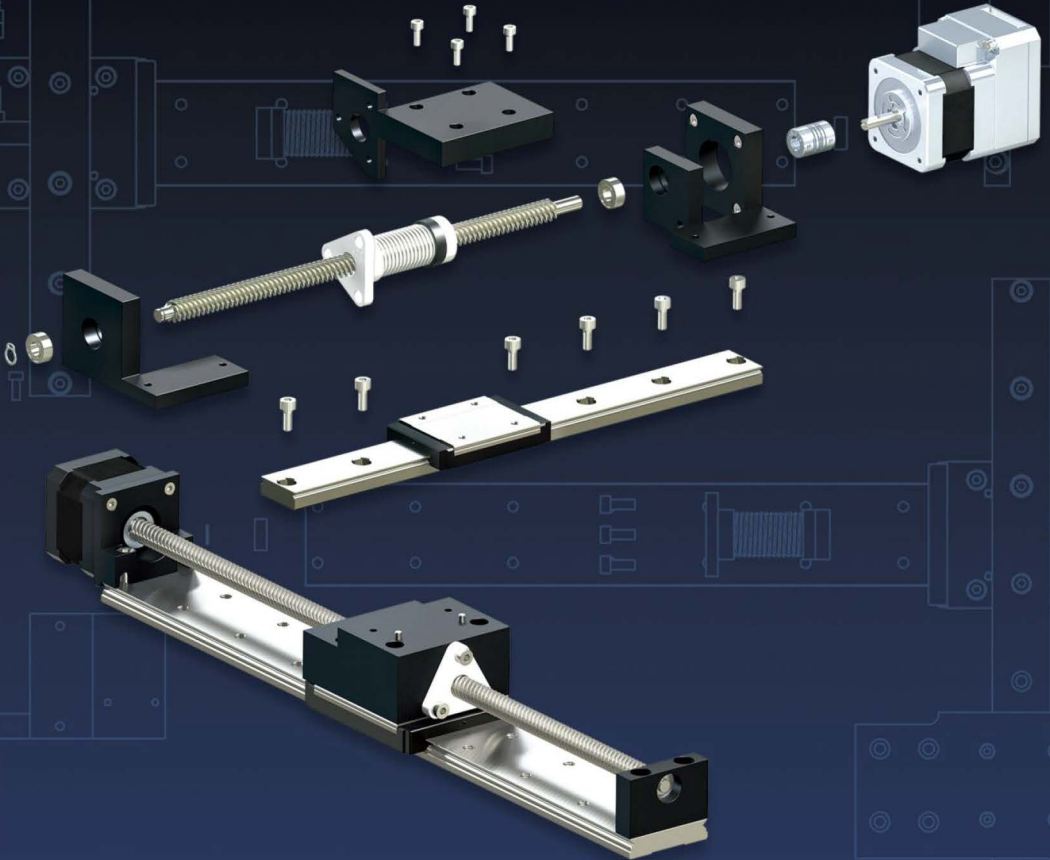




Reliance[®] Precision Limited



Precise Motion Control Solutions
Bearings and Spacers



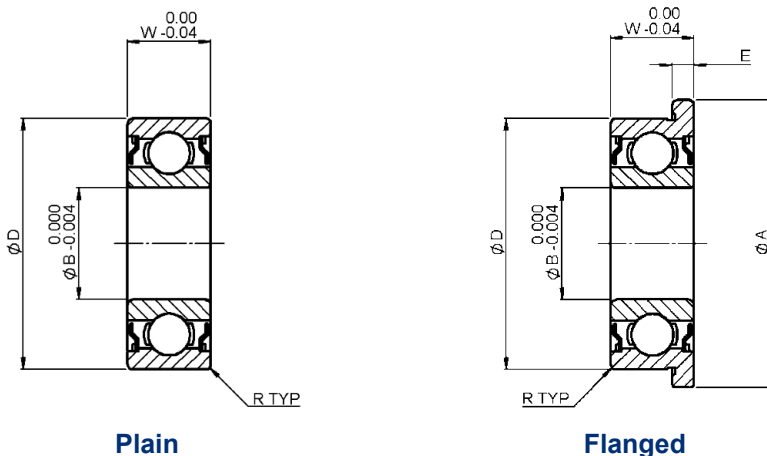
Section Contents

Ball Bearings - P4.....	Page 12-2
Bronze Bearings	Page 12-3
Moulded Bearings.....	Page 12-4
Bearing Pre-load Washers	Page 12-5
Bearing Spacers	Page 12-6
Technical Information.....	Page T12-1

All dimensions in mm
 Generally in accordance with ISO 492,
 tolerance class 4
 Material: X65Cr13 stainless steel

Associated Products

Shafts: [page 11-2](#)
 Bearing pre-load washers: [page 12-5](#)
 Bearing spacers: [page 12-6](#)



Part number selection table

Part Number		Dimensions										Specification	
Plain	Flanged	Bore Dia ØB	O/D ØD		Width W	Radii R (min)		Flange Dia ØA		Flange Width E		Load Ratings N	
			Max	Min		Max	Min	Max	Min	Max	Min	Dynamic C	Static Co
B1-102-S-P4	B2-102-S-P4	2	5	4.996	2.3	0.08	6.15	6.05	0.6	0.56	192	59	
B1-103-S-P4	B2-103-S-P4	3	7	6.996	3.0	0.10	8.15	8.05	0.8	0.76	432	149	
B1-104-S-P4	B2-104-S-P4	4	9	8.996	4.0	0.10	10.35	10.25	1.0	0.96	658	226	
B1-105-S-P4	B2-105-S-P4	5	11	10.996	5.0	0.15	12.55	12.45	1.0	0.92	734	282	
B1-106-S-P4	B2-106-S-P4	6	13	12.996	5.0	0.15	15.05	14.95	1.1	1.02	1096	437	
B1-108-S-P4	B2-108-S-P4	8	16	15.996	6.0	0.20	18.05	17.95	1.3	1.22	1795	776	
B1-110-S-P4	B2-110-S-P4	10	19	18.995	7.0	0.30	21.05	20.95	1.5	1.38	1922	915	

i Features and options

- Operating temperature range: -73°C to +121°C
- Lubricant: grease to MIL-G-21164 and MIL-G-23827
- Double shielded
- Imperial sizes available

? Technical support

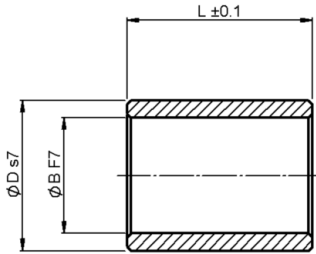
- Spur gear and bearing load calculation - see [page T12-1](#)
- Bearing force sharing - see [page T12-3](#)
- Bearing installation and housing considerations - see [page T12-4](#)



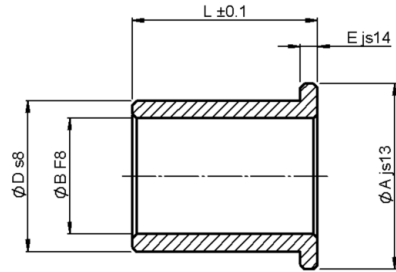


Associated Products
Shafts: page 11-2

All dimensions in mm
General tolerances ± 0.13 mm
Material: Bronze ASTM B 438
Type 2, Grade 1



Plain



Flanged

Part number selection table

Part Number		Bore ϕB^1	O/D ϕD	Length L	Flange Dia ϕA	Flange Width E
Plain	Flanged					
BBM1-3	BBM2-3	3	6	6	9	1.5
BBM1-4	BBM2-4	4	8	12	12	2.0
BBM1-5	BBM2-5	5	8	12	--	--
BBM1-6	BBM2-6	6	10	12	14	2.0
BBM1-8	BBM2-8	8	12	12	16	2.0
BBM1-10	BBM2-10	10	13	16	16	1.5

¹Bearing bore tolerances after assembly are: plain bearings H7, flanged bearings H8.
Recommended housing bore H7

i Features and options

- Operating temperature range: -20°C to $+100^{\circ}\text{C}$
- Oil impregnated
- Max speed 30,000 rpm
- p.v (@0.5 m/s) = 1.75 N/mm².m/s
- p_{max} = 13.8 N/mm
- v_{max} = 6.1 m/s (rotational)
- Imperial sizes available

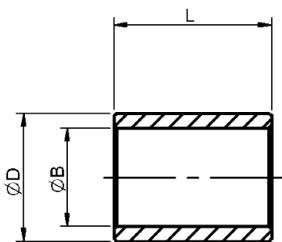


Bearings and Spacers

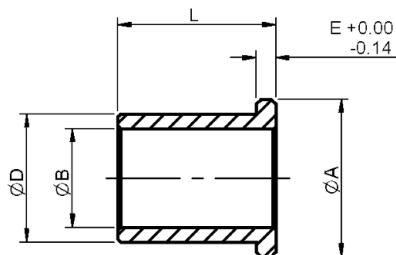


All dimensions in mm
 General tolerances ± 0.13 mm
 Material: Self lubricating moulded thermo-plastic

Associated Products
 Shafts: page 11-2
 Leadscrews: page 7-1
 Bearing spacers: page 12-6



Plain



Flanged

Part number selection table

Part Number		Bore ØB #	O/D ØD	Length L	Flange Dia ØA	Flange Width E
Plain	Flanged					
BM8-2	-----	2.054 2.014	3.5	3.00 2.86	-----	-----
BM8-3	BM9-3	3.054 3.014	4.5	3.00 2.86	7.46 7.24	0.75
BM8-4	BM9-4	4.068 4.020	5.5	4.00 3.82	9.46 9.24	0.75
BM8-5	-----	5.040 5.010	7.0	5.00 4.82	-----	-----
-----	BM9-5	5.068 5.020	7.0	5.00 4.82	10.95 10.68	1.00
BM8-6	BM9-6	6.068 6.020	8.0	6.00 5.82	11.95 11.68	1.00
BM8-8	-----	8.083 8.025	10.0	8.00 7.78	-----	-----
-----	BM9-8	8.083 8.025	10.0	9.50 9.28	14.95 14.68	1.00
BM8-10	BM9-10	10.083 10.025	12.0	10.00 9.78	17.95 17.68	1.00
BM8-12	BM9-12	12.102 12.032	14.0	12.00 11.73	19.93 19.61	1.00

Tolerance for ØB is after press fitting into a housing bore of tolerance H7

i Features and options

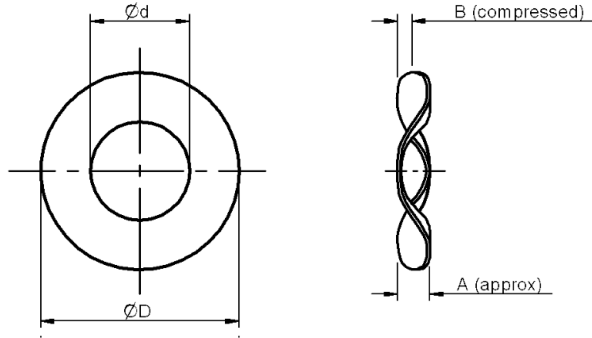
- Operating temperature range: -40°C to +130°C
- $(p.v)_{max} = 1.0$ N/mm².m/s
- $p_{max} = 80$ N/mm²
- $v_{max} = 1.0$ m/s (rotational) or 4.0 m/s (linear)
- Imperial sizes available





Associated Products
 Internal circlips: page 13-21
 Bearings: page 12-2

All dimensions in mm
 General tolerances ± 0.13 mm
 Material: Stainless steel 300 series
 Treatment: Spring tempered



Part number selection table

Part Number	Housing Bore (nominal)	O/D ØD	Bore Ød	Free Height A	Compressed Height B	Load in N to Deflect to B
EPL-1	10	9.5	4.5	1.2	1.0	15
EPL-2	13	12.5	7.5	1.5		19
EPL-4	16	15.5	10.5	1.5		19
EPL-8	19	18.5	13.0	1.5		29
EPL-10	21	20.5	15.0	1.8		29

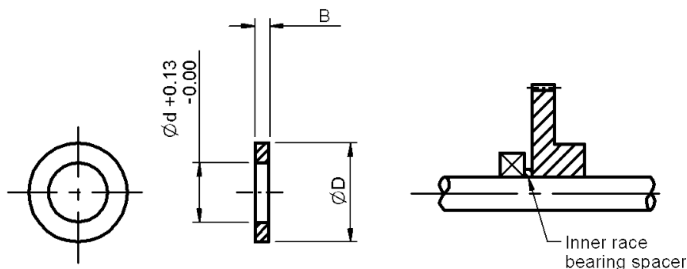
i Features and options

- Imperial bearing pre-load washers
- Available in spring steel, add **-ST** to part number eg **EPL-4-ST**



All dimensions in mm
 General tolerances ± 0.13 mm
 Material: Stainless steel 300 series

Associated Products
 Shafts: page 11-2
 Leadscrews: page 7-1
 Bearings: page 12-2



Dimensions

Shaft Nominal	Spacer Bore Ød	Spacer O/D ØD
2	2	3.0
3	3	4.1
4	4	5.3
5	5	6.7
6	6	7.9
8	8	10.2
10	10	12.3

Part number selection table

Nominal Shaft Dia Ød	Thickness B							
	± 0.025							
	0.05	0.10	0.15	0.20	0.25	0.30	0.40	0.50
2	SS1-117	SS1-118	SS1-119	SS1-120	SS1-121	SS1-122	SS1-123	SS1-124
3	SS1-125	SS1-126	SS1-127	SS1-128	SS1-129	SS1-130	SS1-131	SS1-132
4	SS1-133	SS1-101	SS1-102	SS1-134	SS1-103	SS1-135	SS1-104	SS1-136
5	SS1-137	SS1-138	SS1-139	SS1-140	SS1-141	SS1-142	SS1-143	SS1-144
6	SS1-145	SS1-105	SS1-106	SS1-146	SS1-107	SS1-147	SS1-108	SS1-148
8	SS1-149	SS1-109	SS1-110	SS1-150	SS1-111	SS1-151	SS1-112	SS1-152
10	SS1-153	SS1-113	SS1-114	SS1-154	SS1-115	SS1-155	SS1-116	SS1-156

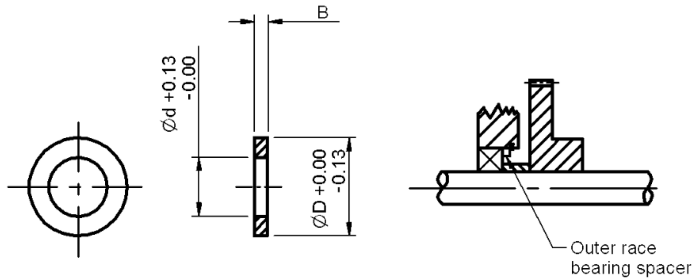
i Product options

- Imperial sizes available



Associated Products
 Internal circlips: page 13-21
 Bearings: page 12-2

All dimensions in mm
 General tolerances ± 0.13 mm
 Material: Stainless steel 300 series



Dimensions

Bearing OD Nominal	Spacer O/D $\varnothing D$	Spacer Bore $\varnothing d$
5	5	4.2
7	7	5.7
9	9	7.8
11	11	9.7
13	13	11.1
16	16	13.8
19	19	16.6

Part number selection table













Bearing ¹		Thickness B							
Bore (nom)	OD (nom)	± 0.025							
		0.05	0.10	0.15	0.20	0.25	0.30	0.40	0.50
2	5	SS3-113	SS3-114	SS3-115	SS3-116	SS3-117	SS3-118	SS3-119	SS3-120
3	7	SS3-121	SS3-122	SS3-123	SS3-124	SS3-125	SS3-126	SS3-127	SS3-128
4	9	SS3-129	SS3-130	SS3-101	SS3-131	SS3-102	SS3-132	SS3-103	SS3-133
5	11	SS3-134	SS3-135	SS3-136	SS3-137	SS3-138	SS3-139	SS3-140	SS3-141
6	13	SS3-142	SS3-143	SS3-104	SS3-144	SS3-105	SS3-145	SS3-106	SS3-146
8	16	SS3-147	SS3-148	SS3-107	SS3-149	SS3-108	SS3-150	SS3-109	SS3-151
10	19	SS3-152	SS3-153	SS3-110	SS3-154	SS3-111	SS3-155	SS3-112	SS3-157

¹ Applies to standard Reliance bearing sizes

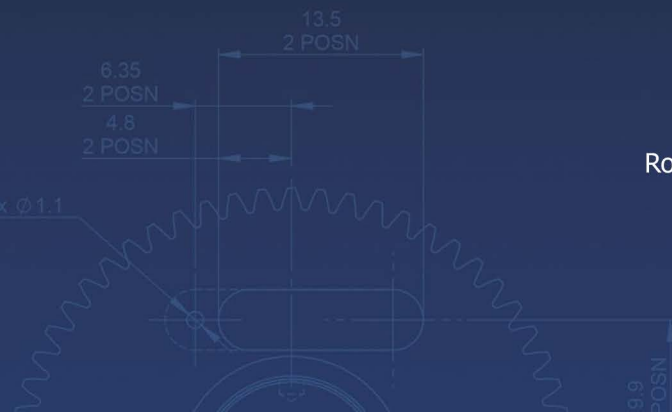
i Product options

- Imperial sizes available

Bearings and Spacers

	<i>Introduction to Reliance</i>	<i>i</i>
	<i>Systems Overview</i>	<i>1</i>
	Intelligent Motors and Motorised Actuators	2
	Planetary and Right Angle Gearboxes	3
	Brass, Ground and Precision Spur Gears	4
	Worms and Wheels, Bevels and Internal Gears	5
	Round and Rectangular Racks and Pinions	6
	Leadscrews and Leadscrew Assemblies	7
	Flexible Shaft Couplings, Clutches and Collars	8
	Linear Guides and Slides	9
	Belts and Pulleys	10
	Gear Clamps and Accessories	11
	Bearings and Spacers	12
	Machine Screws, Dowel Pins and Hardware	13
	<i>Technical Information</i>	<i>14</i>
	<i>Appendices and Index</i>	<i>15</i>

Systems Overview	1
Intelligent Motors and Motorised Actuators	2
Planetary and Right Angle Gearboxes	3
Brass, Ground and Precision Spur Gears	4
Worms and Wheels, Bevels and Internal Gears	5
Round and Rectangular Racks and Pinions	6
Leadscrews and Leadscrew Assemblies	7
Flexible Shaft Couplings, Clutches and Collars	8
Linear Guides and Slides	9
Belts and Pulleys	10
Gear Clamps and Accessories	11
Bearings and Spacers	12
Machine Screws, Dowel Pins and Hardware	13
Technical Information	14



Rowley Mills, Penistone Road, Lepton
Huddersfield, HD8 0LE, England

+44 (0) 1484 601002
www.reliance.co.uk
sales@reliance.co.uk

RG36 issue A1