



The Universal News!

All that's new in the world of rotating electrics.

April 2015

The latest developments in cataloguing.

Universal Rotating Electrics are pleased to announce that we are now fully utilising MAM's Make Model Index (MMI) system along with MAM Automate online to further improve the quality of our product data uploaded onto MAM's Autocat+, the UK's most comprehensive vehicle parts catalogue.

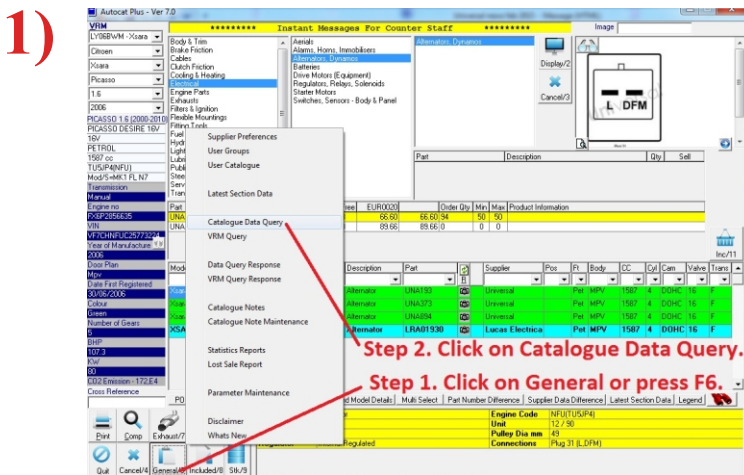
By using this tool we are now formally accredited by MAM as a supplier of MMI certified data.



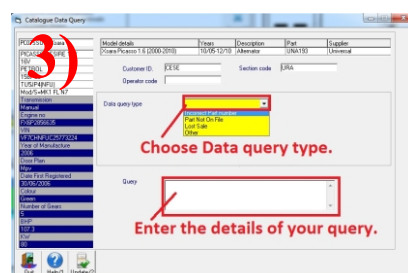
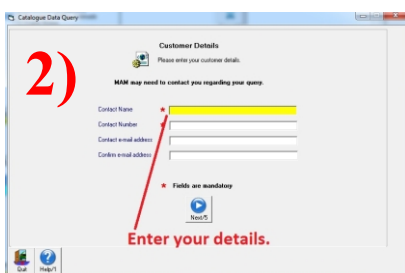
Automate online allows Universal to make our own amendments to new and existing catalogue data. This will enhance our customer service as we will automatically receive data queries from customers through the Autodata+ system.

Should any customers encounter an application query, simply follow the instructions below so that we can check our data and if necessary update the information.

Step 1) In the normal Autocat+ screen, click on General/F6 and then click on Catalogue Data Query.



Step 2) Enter your details; Name, contact number and email address.



Step 3) Enter the nature and the details of the query for us to follow up.

New Packaging.

After some extensive testing of our packaging we have encountered a small number of damaged units that have been sent out on courier. Our own (less arduous) transport seems to be unaffected. We have therefore further invested in a brand new Padpak LC machine to cushion our units even more! The units are literally placed in a large cushion before being placed in the box.

This system is used by some of the largest suppliers in the business and we now believe we have some of the safest packaging available to ensure a safe and secure delivery every time.



More fleet news.

Yet another addition to the fleet, comes by the way of the brand new shape Transit Connect. This takes our total fleet to TEN vans, enabling us to offer up to twice a day delivery across the South East, with deliveries leaving at 9am and 1pm, dependant on the area your in.



Our Website.

Don't forget to visit for all your rotating electric needs. Whether it's news, technical information, cross referencing, clutch pulleys, new to range or our latest offers it's all at:

WWW.UNIVERSAL.UK.COM





The Universal News!

All that's new in the world of rotating electrics.

March 2015

New to range.

Make sure you catch our latest new to range leaflets, packed full of the new part numbers we've recently released. We have been so busy with new part numbers that both the starter motor and alternator leaflets are two crumpled pages.



Let's have a quick look at a couple of new part numbers. How about **UNA2689** 180 amp Mercedes unit. This is the latest 2011 on C Class and 2014 on CLS including some Stop/Start vehicles. Or **UNS1910** Fiat starter, that fits the 2010 on Fiat 500 0.9 Twinair and the brand new Fiat Panda from 2013 on.

Universal
Specialist in Rotating Electrics

New to range Alternators February 2015.

UNA2689 12V 180A HONDA O/E NO. 35420-37-000 O/E NO. 35420-37-000	UNA2686 12V 180A MERCEDES O/E NO. 001 520 020 000 O/E NO. 001 520 020 000	UNA2685 12V 180A MITSUBISHI O/E NO. 671100-0000 O/E NO. 671100-0000
UNA2684 12V 180A VAG O/E NO. 02C 105 301 O/E NO. 02C 105 301	UNA2683 12V 180A CITROEN/PEUGEOT O/E NO. 9553000000 O/E NO. 9553000000	UNA2682 12V 180A FIAT/PEUGEOT O/E NO. 001 520 020 000 O/E NO. 001 520 020 000
UNA2681 12V 180A MERCEDES O/E NO. 001 520 020 000 O/E NO. 001 520 020 000	UNA2680 12V 180A DAIHATSU/DAEWOO O/E NO. 001 520 020 000 O/E NO. 001 520 020 000	UNA2679 12V 180A TOYOTA O/E NO. 001 520 020 000 O/E NO. 001 520 020 000
UNA2678 12V 180A HONDA O/E NO. 35420-37-000 O/E NO. 35420-37-000	UNA2677 12V 180A MITSUBISHI O/E NO. 671100-0000 O/E NO. 671100-0000	UNA2676 12V 180A AUDI O/E NO. 001 520 020 000 O/E NO. 001 520 020 000

Part numbers and part names for reference only. No. 001 520 020 000
Universal Rotating Electrics Ltd. Unit 20, Porton Business Centre, Gurnee Lane South, Basing, East, Hants, RG24 0JY
Tel: +44 (0) 1266 662210 Fax: +44 (0) 1266 525253 Email: sales@universal.co.uk Web: www.universal.co.uk

Universal
Specialist in Rotating Electrics

New to range starters February 2015.

UNS1904 12V 1.2L 2.0L VW O/E NO. 001 520 020 000 O/E NO. 001 520 020 000	UNS1903 12V 1.8L MITSUBISHI/SMART O/E NO. 671100-0000 O/E NO. 671100-0000	UNS1902 12V 1.2L 1.8L FIAT O/E NO. 001 520 020 000 O/E NO. 001 520 020 000
UNS1901 12V 2.0L AUDI O/E NO. 001 520 020 000 O/E NO. 001 520 020 000	UNS1900 12V 1.8L VAG/DAEWOO O/E NO. 001 520 020 000 O/E NO. 001 520 020 000	UNS1899 12V 1.8L MITSUBISHI O/E NO. 671100-0000 O/E NO. 671100-0000
UNS1898 12V 1.8L MITSUBISHI O/E NO. 671100-0000 O/E NO. 671100-0000	UNS1897 12V 1.8L MITSUBISHI O/E NO. 671100-0000 O/E NO. 671100-0000	UNS1896 12V 1.8L MITSUBISHI O/E NO. 671100-0000 O/E NO. 671100-0000
UNS1895 12V 1.8L MITSUBISHI O/E NO. 671100-0000 O/E NO. 671100-0000	UNS1894 12V 1.8L MITSUBISHI O/E NO. 671100-0000 O/E NO. 671100-0000	UNS1893 12V 1.8L MITSUBISHI O/E NO. 671100-0000 O/E NO. 671100-0000
UNS1892 12V 1.8L MITSUBISHI O/E NO. 671100-0000 O/E NO. 671100-0000	UNS1891 12V 1.8L MITSUBISHI O/E NO. 671100-0000 O/E NO. 671100-0000	UNS1890 12V 1.8L MITSUBISHI O/E NO. 671100-0000 O/E NO. 671100-0000

Part numbers and part names for reference only. No. 001 520 020 000
Universal Rotating Electrics Ltd. Unit 20, Porton Business Centre, Gurnee Lane South, Basing, East, Hants, RG24 0JY
Tel: +44 (0) 1266 662210 Fax: +44 (0) 1266 525253 Email: sales@universal.co.uk Web: www.universal.co.uk

Before you accept that return.....

We all know that warranties and returns can be time consuming and problematic if not handled correctly, so with that in mind we have put in place a simple solution that will make things a little less troublesome.

Here at Universal we've set up our "5 key questions" plan to assist our customers deal with warranty returns correctly.

- 1) Does the unit carry a yellow tag warning, if yes, has the warning instructions been carried out?
- 2) Has the customer returned the same unit before?
- 3) Is it the correct unit for the application?
- 4) Is there any sign of tamper, fluid ingress, broken/worn brackets, DMF dust or burnt out?
- 5) Should I call the technical help line if this is the second time? If yes, call us now on **01268 662210**.



Dealing with your warranty returns in this way, will limit the number of "non warranty" units, by highlighting any potential vehicle induced or fitting issues before fitting another unit and all the potential cost that it may involve.

Chris's Comments.

I am pleased to announce that we are now a formally accredited supplier by MAM to the MMi certified data! We now have one of the most informative catalogues available on MAM today, showing product images, plug connection images with wiring codes, full product data specification and any technical bulletins that are linked to our products. It has been a painful, time consuming exercise (dread to think how many hours I have put into this, I am sure my wife has kept count), but this data is critical for vehicle to part number identification with today's Rotating Electrics programme. More new part numbers; we now have over 4650 part numbers available in our range (one of the largest available in the UK today). Now that Stop/Start and LIN technology products have been introduced into the market, we know there will be an explosion in part numbers over the next few years, Universal are the market leaders in NTR products, always keeping you one step ahead of the competition with information!

We're not just car and commercial.

Don't forget we also do Plant, Forklift, Marine, Agricultural, Bus and Coach. In fact if it's got a starter or an alternator on it, you can be pretty sure Universal Rotating will have the answer. This is where having our own workshop, ready to rebuild whatever comes through the door, makes us different to the vast majority of "boxing" companies out there.

