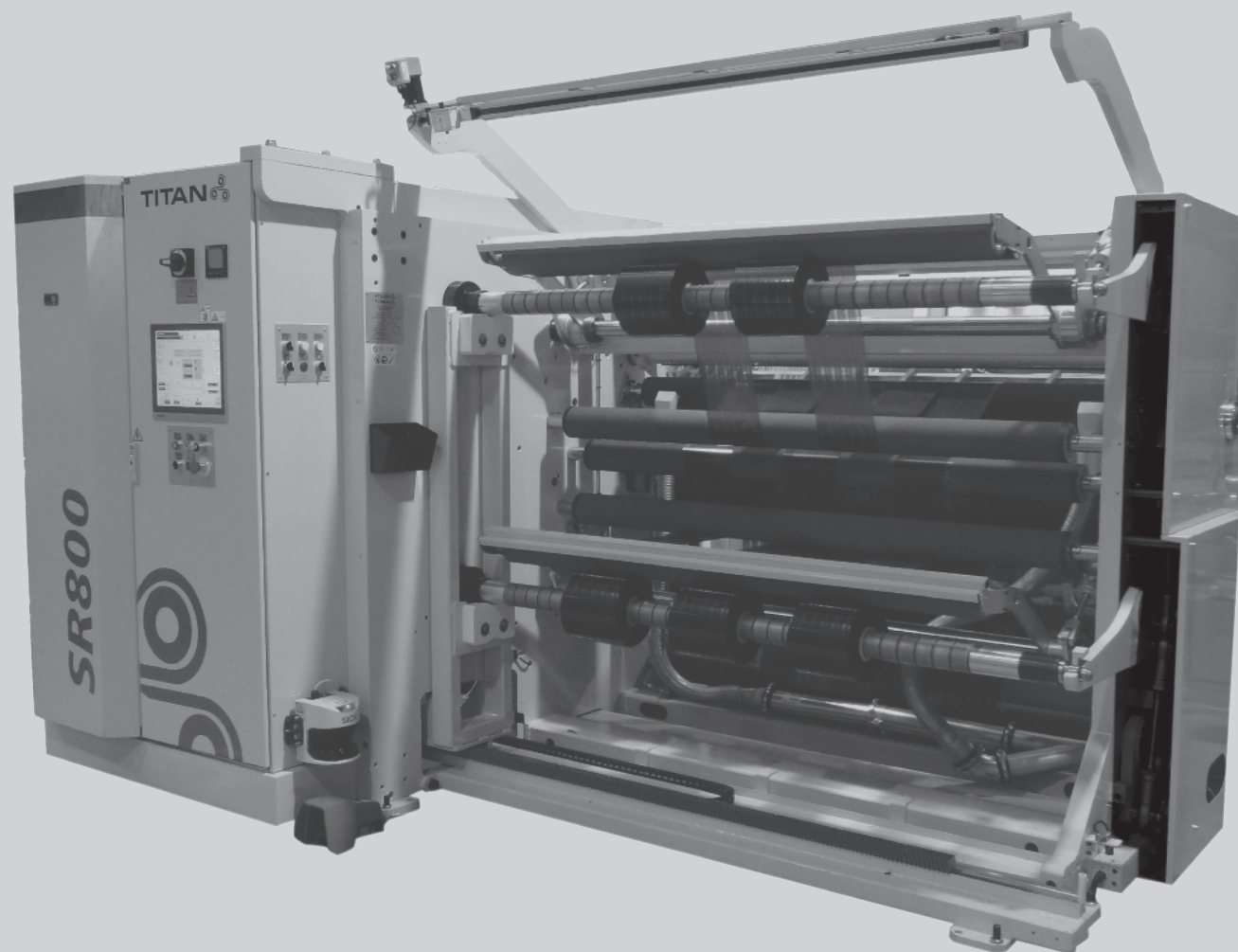




ATLAS 
TITAN 

Titan SR800 Duplex Slitter Rewinder



Titan SR800 Duplex Slitter Rewinder



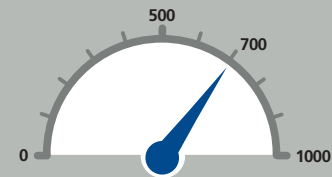
The new Titan SR800 is a high performance, duplex slitter rewriter and the latest addition to the Titan portfolio, designed to meet the requirements of the most demanding production environments.

Its modular design provides an economic and simple solution for upgrading to a higher level of automation as production demands increase.

The Titan SR800 features the latest mechanical, hydraulic, pneumatic, electronic and computer control technology to assure converters of consistent, high quality rewind reels, with improved levels of sustainability, productivity and easy job repeatability.

Materials processed include plain, printed, coated or metallized plastic films and laminates, label materials from 20 to 200 micron and paper from 40 to 200 gsm.

Maximum Production Speed (m/min)



Market Sector

FLEXIBLE PACKAGING

PLAIN FILM

LABEL

INDUSTRIAL

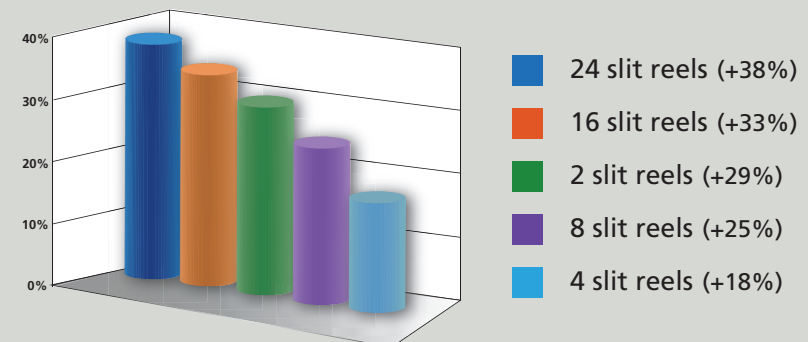
Standard Features

- Titan differential winding technology
- AC digital servo drive technology
- Digital line/edge guide system
- Unwind 'closed loop' dual brake control
- Razor, rotary or shear slitting
- Memory for material and job recipes
- S-wrap centre drive (no nip)
- CE safety fencing and laser scanner (in EU countries)
- Range of unloading devices
- Secure internet connection for remote diagnostics

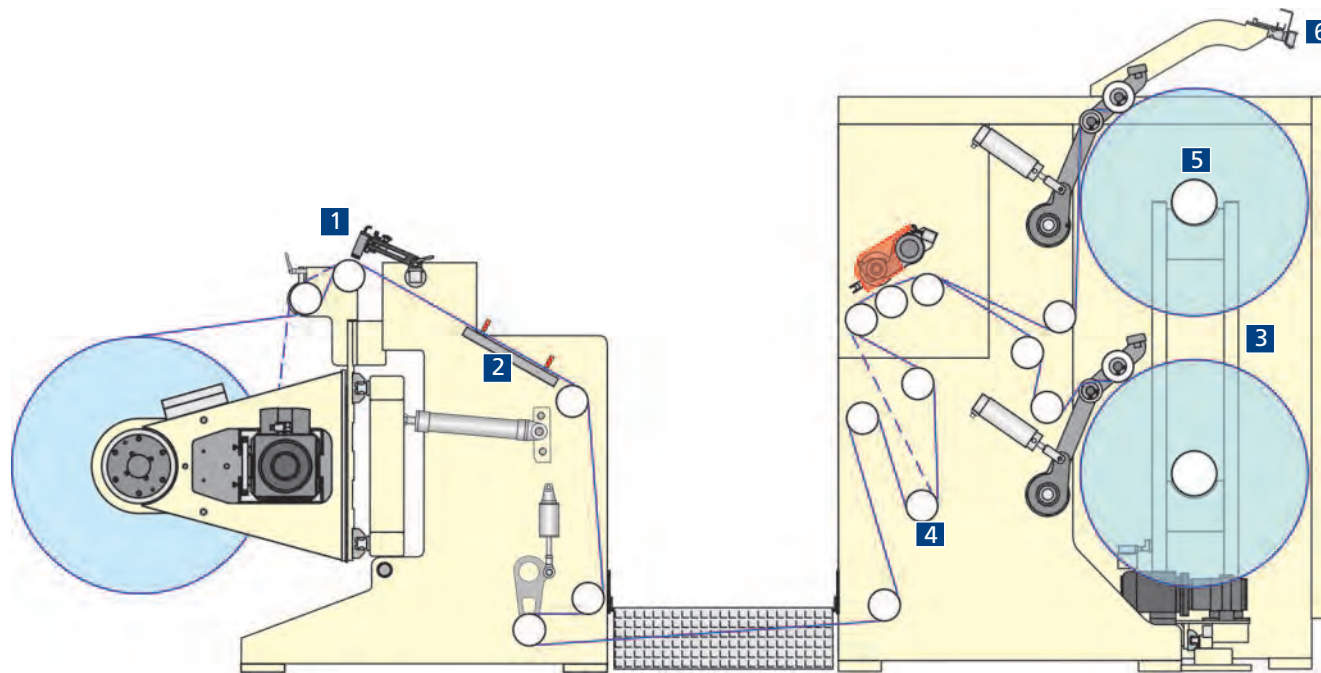
Optional Features

- Automatic individual knife positioning system for male & female knives
- PPD / Positive Positional Device for knife positioning
- Laser (line) core positioning
- 'Closed loop' loadcell rewind control
- Impression counter
- Static eliminators
- Gap winding control
- Motor driven unwind
- Splice table

Slit Reel Productivity Increases Automation v Manual



- Data based on 45 micron laminate, rewinding to 800mm diam. on 76mm ID cores
- Automation options include auto knife & laser core positioning and reel stripping



Differential Rewind (standard)

Titan's Quick Shaft differential winding system utilising 'Ball Lock' units provides constant tension regardless of the different widths of packages being rewound on the same shaft. No adjustment of the rewind shafts between slit width changes is required, minimising 'downtime' and increasing productivity. Any web profile variation is automatically compensated by the differential system.



Laser core positioning (option)

A line laser guided core positioning system enables the operator to reload new cores quickly and accurately minimising set-up time and eliminates re-starts due to improper alignment. The system will take the slit width data already stored in the PC and move a line laser beam onto the rewind shafts in steps according to the programmed slit widths.



Digital web guidance (standard)

A digital web guidance system provides precision alignment of the web entering the slitting section. Utilising a 'CCD' head the system can 'read' material edge, printed continuous or broken lines.

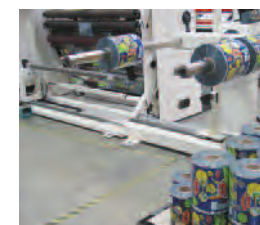
Cant roller (option)

To eliminate 'baggy edges' a fully adjustable Cant roller can be positioned on the unwind unit.



Automatic reel stripping (option)

A robust motor-driven slit reel stripping system automatically unlocks and strips the finished reels from the rewind shafts onto an unloading boom. Differential shafts are fully supported during the entire unloading operation. This also reduces machine 'downtime'.



Unloading devices (option)

There are a number of unloading options available depending on the weight and size of reels and levels of automation required.



Splice table (option)

A variety of 'splice tables' provide the operator with the ideal environment for perfect splicing.



Tension & drive control (standard)

Using the latest generation of AC Digital Servo motors & drives through an 'S' wrap roller drive, web tension control is precise. The 'S' wrap drive isolates the tension between the unwind and rewind sections of the machine minimising fluctuations in tension.



EU safety guarding (standard in EU)

In order to conform to new EU directives, Titan has developed a strong but operator friendly safety system without compromising productivity or efficiency. Using a combination of laser area scanners and mechanical guards, compliance with EU safety regulations is assured.

Machine Specification

Technical Data		
Web Width	1350mm (53in)	1650mm (65in)
Maximum Unwind Diameter	1300mm (51in)	1300mm (51in)
Maximum Rewind Diameter	800mm (31.5in)	800mm (31.5in)
Maximum Production Speed*	700 m/min (2,300 ft/min)	700 m/min (2,300 ft/min)
Min/Max Slit Widths	20mm/900mm (0.80 / 35.5in)	20mm/1100mm (0.80 / 43.5in)

**Dependent on materials, slit widths and core quality*

Materials	
Plastic Film	Plain, printed, coated or metallized from 20 to 200 micron
Laminates	Various materials from 20 to 200 micron
Paper & Board	Paper from 40 to 200 gsm

Europe
Atlas Converting Equipment Ltd.
8 Wolsley Road,
Woburn Road Industrial Estate
Kempston
Bedford
MK42 7XT
United Kingdom
T: +44 1234 852553
F: +44 1234 851151
sales.atlas@atlasconverting.com
sales.titan@atlasconverting.com
service@atlasconverting.com

America
Atlas Converting North America, Inc.
9801-F Southern Pine Boulevard
Charlotte
NC 28273
United States of America
T: +1 704 587 2450
F: +1 704 587 2451
sales.usa@atlasconverting.com
service@atlasconverting.com

Asia
A.C.E. (Shanghai) Trading Co. Ltd.
6P, New Shanghai International Tower
360 South Pudong Road
Shanghai 200120
China
T: +86 21 6886 2501
F: +86 21 6886 2502
sales.atlas@atlasconverting.com
sales.titan@atlasconverting.com
service@atlasconverting.com

Atlas Converting Equipment (India) Pvt. Ltd.
Plant No.13, Extension Office Building
Eastern Express Highway
Pirojsha Nagar, Vikhroli (East)
Mumbai 400 079
India
T: +91 992 081 9791
F: +91 222 623 3009
sales.atlas@atlasconverting.com
sales.titan@atlasconverting.com
service@atlasconverting.com

