

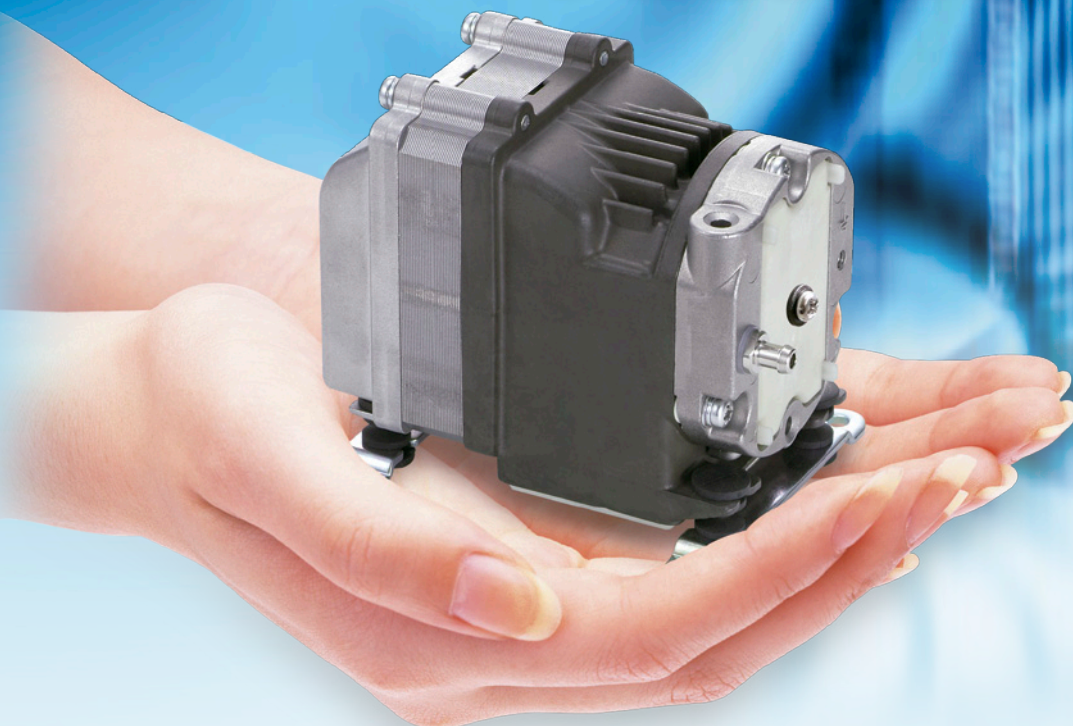


JQA-2160
Linear Products Division
JQA-EM4057
Headquarters
Research Center

Cat.No. **Lk003a**

NITTO KOHKI's

Air Compressors & Vacuum Pumps



DC Linear Piston Compressor



Specifications	DAH102	DAH105	DAH110
Model	DAH102	DAH105	DAH110
Rated Pressure	0.02 MPa 0.2 bar 2.84 psig	0.05 MPa 0.5 bar 7.11 psig	0.1 MPa 1.0 bar 14.2 psig
Rated Airflow	5 L/min 0.177 cfm	2.5 L/min 0.088 cfm	1.0 L/min 0.035 cfm
Rated Voltage	12 V DC or 24 V DC	12 V DC or 24 V DC	12 V DC or 24 V DC
Gross Weight	0.91 kg 2.01 Lbs	0.91 kg 2.01 Lbs.	0.91 kg 2.01 Lbs.
Mounting Dimensions	76 mm(L) x 70 mm(W) 3"(L) x 2-3/4"(W)	76 mm(L) x 70 mm(W) 3"(L) x 2-3/4"(W)	76 mm(L) x 70 mm(W) 3"(L) x 2-3/4"(W)

DC Linear Piston Vacuum Pump



Specifications	DVH130	DVH145
Model	DVH130	DVH145
Attainable Vacuum	-40 kPa -300 mmHg -400 mbar -11.8 in.Hg	-60 kPa -450 mmHg -600 mbar -17.7 in.Hg
Free Air Displacement	7 L/min 0.247 cfm	3 L/min 0.106 cfm
Rated Voltage	12 V DC or 24 V DC	12 V DC or 24 V DC
Gross Weight	0.91 kg 2.01 Lbs.	0.91 kg 2.01 Lbs.
Mounting Dimensions	76 mm(L) x 70 mm(W) 3"(L) x 2-3/4"(W)	76 mm(L) x 70 mm(W) 3"(L) x 2-3/4"(W)



The DC Linear Piston range is available with optional heavy duty rubber feet to be specified on ordering. For use where pumps are located within portable devices and drop damage is more likely.

For more information about our air compressors and vacuum pumps visit www.nitto-kohki.co.jp/e/prd/linear.html and see our **eCatalog**.



AC Linear Piston

Compressors & Vacuum Pumps

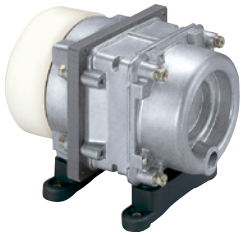
AC Linear Piston Compressor Low pressure series



AC0102



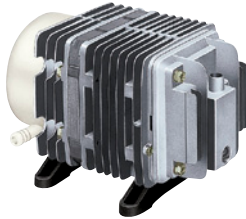
AC0201A



AC0301A / AC0401A



AC0602



AC0901 / AC0902

Specifications

Model	AC0102	AC0201A
Rated Pressure	0.02 MPa 0.2 bar 2.84 psig	0.01 MPa 0.1 bar 1.42 psig
Rated Airflow	5 L/min 0.177 cfm	20 L/min 0.71 cfm
Rated Voltage	115 V AC or 230 V AC	115 V AC or 230 V AC
Gross Weight	0.7 kg 1.54 Lbs.	1.5 kg 3.3 Lbs.
Mounting Dimensions	48 mm(L) × 62 mm(W) 1-7/8"(L) × 2-7/16"(W)	73 mm(L) × 88 mm(W) 2-7/8"(L) × 3-15/32"(W)

Specifications

Model	AC0301A	AC0401A
Rated Pressure	0.01 MPa 0.1 bar 1.42 psig	0.01 MPa 0.1 bar 1.42 psig
Rated Airflow	28 L/min 0.99 cfm	35 L/min 1.24 cfm
Rated Voltage	115 V AC or 230 V AC	120 V AC or 230 V AC
Gross Weight	1.9 kg 4.2 Lbs.	1.9 kg 4.2 Lbs.
Mounting Dimensions	68 mm(L) × 84 mm(W) 2-11/16"(L) × 3-5/16"(W)	68 mm(L) × 84 mm(W) 2-11/16"(L) × 3-5/16"(W)

Specifications

Model	AC0602	AC0901	AC0902
Rated Pressure	0.015 MPa 0.15 bar 2.13 psig	0.01 MPa 0.1 bar 1.42 psig	0.02 MPa 0.2 bar 2.84 psig
Rated Airflow	40 L/min 1.41 cfm	80 L/min 2.83 cfm	55 L/min 1.94 cfm
Rated Voltage	115 V AC or 230 V AC	115 V AC or 230 V AC	115 V AC or 230 V AC
Gross Weight	3 kg 6.6Lbs.	4.9 kg 10.8 Lbs.	4.9 kg 10.8 Lbs.
Mounting Dimensions	68 mm(L) × 84 mm(W) 2-11/16"(L) × 3-5/16"(W)	102 mm(L) × 130 mm(W) 4"(L) × 5-1/8"(W)	102 mm(L) × 130 mm(W) 4"(L) × 5-1/8"(W)

AC Linear Piston Compressor Intermediate Pressure Series



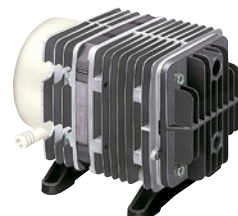
AC0110



AC0207



AC0610



AC0920

Specifications

Model	AC0110	AC0207
Rated Pressure	0.1 MPa 1.0 bar 14.2 psig	0.07 MPa 0.7 bar 9.96 psig
Rated Airflow	0.8 L/min 0.028 cfm	3.5 L/min 0.124 cfm
Rated Voltage	115 V AC or 230 V AC	115 V AC or 230 V AC
Gross Weight	0.7 kg 1.54 Lbs.	1.7 kg 3.7 Lbs.
Mounting Dimensions	48 mm(L) × 62 mm(W) 1-7/8"(L) × 2-7/16"(W)	75 mm(L) × 88 mm(W) 2-15/16"(L) × 3-15/32"(W)

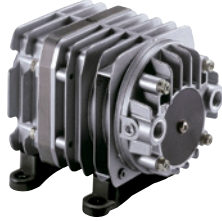
Specifications

Model	AC0610	AC0920
Rated Pressure	0.1 MPa 1.0 bar 14.2 psig	0.2 MPa 2.0 bar 28.4 psig
Rated Airflow	8 L/min 0.283 cfm	8 L/min 0.283 cfm
Rated Voltage	115 V AC or 230 V AC	115 V AC or 230 V AC
Gross Weight	3.2 kg 7.1 Lbs.	5 kg 11 Lbs.
Mounting Dimensions	68 mm(L) × 84 mm(W) 2-11/16"(L) × 3-5/16"(W)	102 mm(L) × 130 mm(W) 4"(L) × 5-1/8"(W)

AC Linear Piston Vacuum Pump



● VP0125 / VP0140



● VP0435A



● VP0450



● VP0625



● VP0660



● VP0940

Specifications

Model	VP0125	VP0140
Attainable Vacuum	-33.3 kPa	-53.3 kPa
	-250 mmHg	-400 mmHg
	-333 mbar	-533 mbar
	-9.84 in.Hg	-15.7 in.Hg
Free Air Displacement	7 L/min	3 L/min
	0.247 cfm	0.106 cfm
Rated Voltage	115 V AC or 230 V AC	115 V AC or 230 V AC
Gross Weight	0.7 kg	0.7 kg
	1.54 Lbs.	1.54 Lbs.
Mounting Dimensions	48 mm(L) × 62 mm(W)	48 mm(L) × 62 mm(W)
	1-7/8"(L) × 2-7/16"(W)	1-7/8"(L) × 2-7/16"(W)

Specifications

Model	VP0435A	VP0450
Attainable Vacuum	-46.7 kPa	-66.7 kPa
	-350 mmHg	-500 mmHg
	-467 mbar	-667 mbar
	-13.78 in.Hg	-19.7 in.Hg
Free Air Displacement	25 L/min	18 L/min
	0.88 cfm	0.64 cfm
Rated Voltage	115 V AC or 230 V AC	120 V AC or 230 V AC
Gross Weight	2.3 kg	2.2 kg
	5.1Lbs.	4.9 Lbs.
Mounting Dimensions	68 mm(L) × 84 mm(W)	85 mm(L) × 88 mm(W)
	2-11/16"(L) × 3-5/16"(W)	3-11/32"(L) × 3-15/32"(W)

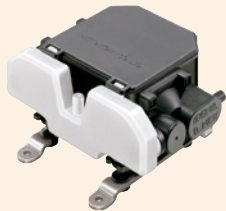
Specifications

Model	VP0625	VP0660	VP0940
Attainable Vacuum	-33.3 kPa	-80 kPa	-53.3 kPa
	-250 mmHg	-600 mmHg	-400 mmHg
	-333 mbar	-800 mbar	-533 mbar
	-9.84 in.Hg	-23.6 in.Hg	-15.7 in.Hg
Free Air Displacement	40 L/min	25 L/min	60 L/min
	1.41 cfm	0.88 cfm	2.12 cfm
Rated Voltage	115 V AC or 230 V AC	115 V AC or 230 V AC	120 V AC or 230 V AC
Gross Weight	3 kg	5 kg	4.55 kg
	6.6 Lbs.	11 Lbs.	10.0 Lbs.
Mounting Dimensions	68 mm(L) × 84mm(W)	102 mm(L) × 130 mm(W)	102mm(L) × 130 mm(W)
	2-11/16"(L) × 3-5/16"(W)	4"(L) × 5-1/8"(W)	4"(L) × 5-1/8"(W)

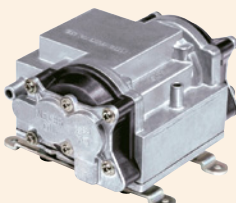
AC Linear Diaphragm Pump



● VC0100



● VC0101 / VC0101E



● VC0201B / VC0301B

Specifications

Model	VC0100 Dual Type	VC0101 Dual Type	VC0101 Dual Type
Rated Pressure	0.004 MPa	0.01 MPa	0.01 MPa
	0.04 bar	0.1 bar	0.1 bar
	0.57 psig	1.42 psig	1.42 psig
Rated Airflow	6 L/min	10 L/min	10 L/min
	0.21 cfm	0.35 cfm	0.35 cfm
Rated Voltage	120 V AC or 230 V AC	120 V AC	230 V AC
Working Pressure Range	-14.7 kPa - 0.016 MPa	-18.7 kPa - 0.018 MPa	-10 kPa - 0.015 MPa
	-110 mmHg - 0.16 kgf/cm ²	-140 mmHg - 0.18 kgf/cm ²	-76 mmHg - 0.15 kgf/cm ²
	-147 mbar - 0.16 bar	-187 mbar - 0.18 bar	-100 mbar - 0.15 bar
	-4.33 in.Hg - 2.28 psig	-5.51 in.Hg - 2.56 psig	-2.95 in.Hg - 2.13 psig
Gross Weight	0.45 kg	0.82 kg	0.82 kg
	0.99 Lbs.	1.8 Lbs.	1.8 Lbs.
Mounting Dimensions	70 mm(L) × 72 mm(W)	66 mm(L) × 100 mm(W)	66 mm(L) × 100 mm(W)
	2-3/4"(L) × 2-27/32"(W)	2-19/32"(L) × 3-15/16"(W)	2-19/32"(L) × 3-15/16"(W)

Specifications

Model	VC0101E Dual Type	VC0201B Dual Type	VC0301B Dual Type
Rated Pressure	0.01 MPa	0.01 MPa	0.01 MPa
	0.1 bar	0.1 bar	0.1 bar
	1.42 psig	1.42 psig	1.42 psig
Rated Airflow	15 L/min	20 L/min	25 L/min
	0.53cfm	0.71 cfm	0.88 cfm
Rated Voltage	120 V AC or 230V AC	120 V AC or 230 V AC	120 V AC or 230 V AC
Working Pressure Range	-18.7 kPa - 0.02 MPa	-18.7 kPa - 0.018 MPa	-21.3 kPa - 0.02 MPa
	-140 mmHg - 0.2 kgf/cm ²	-140 mmHg - 0.18 kgf/cm ²	-160 mmHg - 0.2 kgf/cm ²
	-186 mbar - 0.2 bar	-187 mbar - 0.18 bar	-213 mbar - 0.2 bar
	-5.51 in.Hg - 2.84 psig	-5.5 in.Hg - 2.56 psig	-6.3 in.Hg - 2.84 psig
Gross Weight	0.82 kg	1.7 kg	1.7 kg
	1.8 Lbs.	3.7 Lbs.	3.7 Lbs.
Mounting Dimensions	66 mm(L) × 100 mm(W)	125 mm(L) × 56 mm(W)	125 mm(L) × 56 mm(W)
	2-19/32"(L) × 3-15/16"(W)	4-15/16"(L) × 2-13/64"(W)	4-15/16"(L) × 2-13/64"(W)

DC Piston Pump

DP0105



DPA0105



Specifications

Model	DP0105
Free Air Displacement	2.8 L/min 0.1 cfm
Maximum Pressure	0.25 MPa 2.5 kgf/cm ² 2.5 bar 35.6 psig
Working Pressure Range	-66.6 kPa - 0.1 MPa -500 mmHg - 1 kgf/cm ² -666 mbar - 1 bar -19.7 in.Hg - 14.2 psig
Rated Voltage	12 V DC or 24 V DC
Gross Weight	0.36 kg 0.80 Lbs.
Mounting Dimensions	42 mm(L) x 24.5 mm(W) 1- ²¹ / ₃₂ "(L) x 1- ³¹ / ₃₂ "(W)

Specifications

Model	DPA0105
Free Air Displacement	2.8 L/min 0.1 cfm
Maximum Pressure	0.22 MPa 2.2 kgf/cm ² 2.2 bar 31.3 psig
Working Pressure Range	0 - 0.1 MPa 0 - 1 kgf/cm ² 0 - 1 bar 0 - 14.2 psig
Rated Voltage	12 V DC or 24 V DC
Gross Weight	0.30 kg 0.66 Lbs.
Mounting Dimensions	50 mm(L) x 30 mm(W) 1- ³¹ / ₃₂ "(L) x 1- ³ / ₁₆ "(W)

DC Diaphragm Pump

DP0102 / 0102S



DP0102H-X1



DP0102H-X2



DP0110



Specifications

Model	DP0102	DP0102S	DP0102H-X1
Free Air Displacement	5.0 L/min 0.177 cfm	7.0 L/min 0.247 cfm	4.0 L/min 0.141 cfm
Maximum Pressure	0.045 MPa 0.45 kgf/cm ² 0.45 bar 6.4 psig	0.045 MPa 0.45 kgf/cm ² 0.45 bar 6.4 psig	0.08 MPa 0.8 kgf/cm ² 0.8 bar 11.4 psig
Working Pressure Range	-26.7 kPa - 0.045 MPa -200 mmHg - 0.45 kgf/cm ² -267 mbar - 0.45 bar -7.87 in.Hg - 6.4 psig	-26.7 kPa - 0.045 MPa -200 mmHg - 0.45 kgf/cm ² -267 mbar - 0.45 bar -7.87 in.Hg - 6.4 psig	-50.7 kPa - 0.08 MPa -380 mmHg - 0.8 kgf/cm ² -507 mbar - 0.8 bar -15 in.Hg - 11.4 psig
Rated Voltage	12 V DC	24 V DC	12 V DC
Gross Weight	0.25 kg 0.55 Lbs.	0.25 kg 0.55 Lbs.	0.25 kg 0.55 Lbs.
Mounting Dimensions	50 mm(L) x 30 mm(W) 1- ³¹ / ₃₂ "(L) x 1- ³ / ₁₆ "(W)	50 mm(L) x 30 mm(W) 1- ³¹ / ₃₂ "(L) x 1- ³ / ₁₆ "(W)	50 mm(L) x 30 mm(W) 1- ³¹ / ₃₂ "(L) x 1- ³ / ₁₆ "(W)

Specifications

Model	DP0102H-X2
Free Air Displacement	4.0 L/min 0.141 cfm
Maximum Pressure	0.08 MPa 0.8 kgf/cm ² 0.8 bar 11.4 psig
Working Pressure Range	0 - 0.08 MPa 0 - 0.8 kgf/cm ² 0 - 0.8 bar 0 - 11.4 psig
Rated Voltage	12 V DC
Gross Weight	0.25kg 0.55Lbs.
Mounting Dimensions	50 mm(L) x 30 mm(W) 1- ³¹ / ₃₂ "(L) x 1- ³ / ₁₆ "(W)

Specifications

Model	DP0110
Free Air Displacement	7.5 L/min 0.26 cfm
Maximum Pressure	0.15 MPa 1.5 kgf/cm ² 1.5 bar 21.3 psig
Working Pressure Range	-66.6 kPa - 0.15 MPa -500 mmHg - 1.5 kgf/cm ² -666 mbar - 1.5 bar -19.7 in.Hg - 21.3 psig
Rated Voltage	12 V DC or 24 V DC
Gross Weight	0.3 kg 0.66 Lbs.
Mounting Dimensions	50 mm(L) x 30 mm(W) 1- ³¹ / ₃₂ "(L) x 1- ³ / ₁₆ "(W)

*Dimensions do not include the rubber feet.

★ Specifications and designs are subject to change at any time without notice.



Head Office

9-4, Nakaikigami 2-chome,
Ohta-ku, Tokyo 146-8555 Japan
Phone : +81-3-3755-1111 Fax : +81-3-3753-8791

▶ E-mail : overseas@nitto-kohki.co.jp

▶ URL : www.nitto-kohki.co.jp/e

Overseas Affiliates/Offices

MEDO U.S.A., INC.

TEL:+1-630-924-8811 FAX:+1-630-924-0808
<http://www.medousa.com/en/>

NITTO KOHKI EUROPE CO., LTD.(UK)

TEL:+44-1923-239-668 FAX:+44-1923-248-815
<http://www.nitto.co.uk/>

NITTO KOHKI DEUTSCHLAND GMBH

TEL:+49-7157-22436 FAX:+49-7157-22437
<http://www.nitto-kohki.de/>

NITTO KOHKI AUSTRALIA PTY. LTD.

TEL:+61-7-3340-4600 FAX:+61-7-3340-4640
<http://www.nitto-australia.com.au/>

NITTO KOHKI CO., LTD. SINGAPORE BRANCH

TEL:+65-6227-5360 FAX:+65-6227-0192
<http://www.nitto-kohki.co.jp/e/nksb/>

NITTO KOHKI CO., LTD. BANGKOK

REPRESENTATIVE OFFICE
TEL:+66-2-632-0307 FAX:+66-2-632-0308
http://www.nittobkk.com/eng_index.htm

NITTO KOHKI CO., LTD. SHANGHAI

REPRESENTATIVE OFFICE
TEL:+86-21-6415-3935 FAX:+86-21-6472-6957
<http://www.nitto-kohki.cn/>

NITTO KOHKI CO., LTD. SHENZHEN

REPRESENTATIVE OFFICE
TEL:+86-755-8375-2185 FAX:+86-755-8375-2187
<http://www.nitto-kohki.cn/>

- General information of Nitto Kohki's Air Compressors and Vacuum Pumps is provided in this catalog.
- For more information, please see our eCatalog or directly contact our overseas affiliates.
- Only air must be applied to the compressors and pumps.

DISTRIBUTED BY