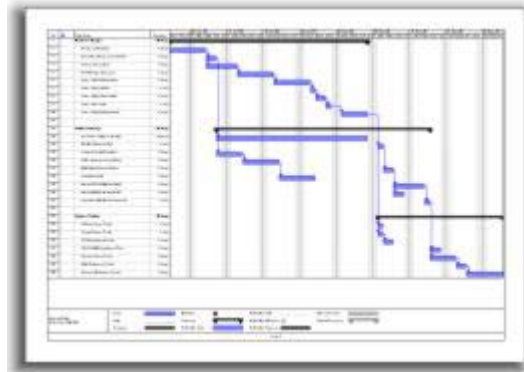




Project Engineering

We have the structured organisational procedures in place to allow us to control the progress of sometimes very complex control systems, through their development life cycle.

Industry standard 'Turn-key Project Management' strategies are applied in a scalable fashion to all our projects, large or small. This provides a framework around which schedules, projections, milestones and other planning tools can be established.



Typical project phase classifications:-

- ◆ Systems Analysis
- ◆ Feasibility Study
- ◆ Functional Design Specification
- ◆ FDS Iterations
- ◆ Design Implementation
- ◆ Testing procedure definition
- ◆ Factory Acceptance Tests
- ◆ Consolidation and presentation of system documentation and certification
- ◆ Installation
- ◆ Commissioning
- ◆ Maintenance and on-going system support