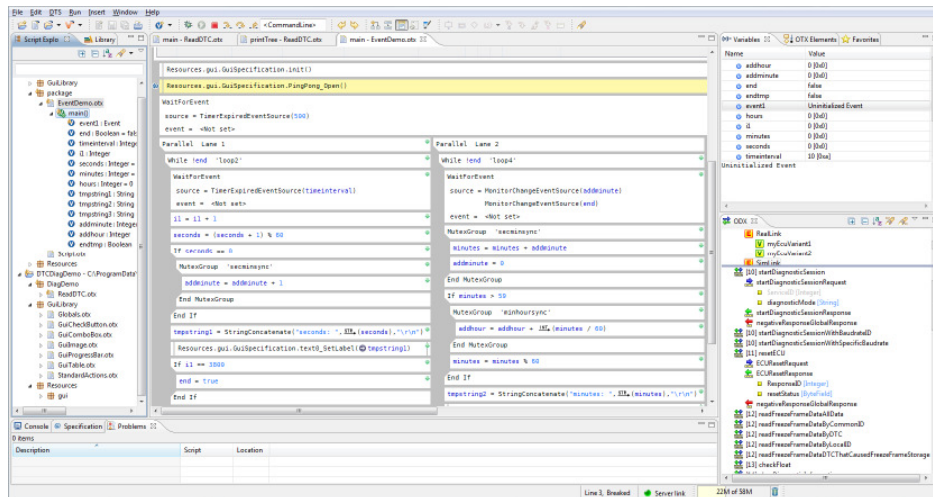


OTX Studio

All-in-One Development Environment for Diagnostic Sequences

OTX Studio is a tool for creating, implementing and debugging diagnostic and test sequences (based on the ISO 13209 standard). It is designed to be used for ECU and vehicle tests. With a special GUI editor, it is easy to generate user interfaces and link them to the sequences created. Diagnostic data is supported in compliance with ODX 2.0.1 as well as 2.2.0.



Specifying and Implementing Diagnostic Sequences

The new OTX (Open Test sequence eXchange) standard compliant with ISO 13209 enables users to describe diagnostic sequences from basic function tests up to complete tester applications. OTX Studio provides support in the early specification phase as well as in downstream implementation. The tool makes it easy to create graphic diagrams with a clear representation of the sequence logic. The integrated OTX Differ allows easy comparing and merging of sequences in different development stages.

Suitable for Both First-Time Users and Experienced Developers

OTX Studio provides all the necessary input assistants which guide the user when learning to use the product. IntelliSense allows users to create sequences without having in-depth knowledge of the OTX language elements. Comprehensive project administration with integrated version management for subversions ensures structured overviews even in large projects. The library concept that many users are familiar with from standard programming languages supports users in the modular creation of their diagnostic OTX sequences.

From Flash Sequence to Repair Shop Tester

Typical areas of application are, for example, the creation of flash or test sequences. Particularly test planners for complete repair shop testers benefit from the variety of integrated tools. The GUI editor allows the designing of the entire test interface as well as the simple connection of the GUI elements to the corresponding OTX script variables. OTX function libraries can be defined to allow reuse of generic OTX procedures. There is no limitation to the number of these libraries. Program developers for guided fault diagnosis on the vehicle use the foreign language editor, the document viewer and browser for repair instructions and technical drawings. The full debugging possibilities are indispensable for all users (see overview).



OTX

AREAS OF APPLICATION

- Graphic specification of diagnostic sequences
- Creation of test sequences in ECU development
- Creation of test sequences for EOL tester in Manufacturing
- Guided fault diagnosis for repair shop testers

BENEFITS

- Easy exchange of sequences between ECU, system and vehicle manufacturers
- User oriented editor concepts: Line oriented, Flow Chart or modular "Comfort Mode"
- Can be implemented universally as maximum OTX function scope available
- Long-term protection of investments due to use of an international standard
- Expertise protection and prevention of unauthorized changes by saving OTX scripts in binary format

Overview

OTX extensions	Diagnostics (ISO13209-3): DiagCom, DiagDataBrowsing, Flash, Job, Quantities User interface (ISO13209-3): HMI, I18N Miscellaneous (ISO13209-3): DateTime, Event, Logging, Math, StringUtil Extended (Softing): ExternCall (DLL), File, XML, Trace
Onboard checker	Verification of OTX compliance Verification of type compatibility
Debugging functions	Watch view: display of OTX variables / Break points: interruption of sequences at a defined point Call stack: call hierarchy of complex sequences Online change: change of OTX source code during a debugging session with direct acceptance
GUI editor functions	Creation of a program framework Creation of dynamic interfaces for displaying script variables
Resource management	Display of document structure for insertion into sequences for guided fault diagnosis Display of documents and selection of document position in the integrated viewer Insertion of boilerplates and repair shop documents using Drag&Drop
Foreign language editor functions	Display of all existing foreign language texts / Full text search in existing language components Export and import of XLIFF files for collaboration with translation agencies
Other views	Favorites: to be defined by the user for fast selection Comfort Mode: simplified sequence creation with predefined libraries Service Execution: direct execution of diagnostic services via double click OTX Differ for user friendly comparison and merge of OTX sequences

Technical Data

Based on DTS Base System	See separate data sheet: Diagnostic Tool Set 8 – System Overview
Standard compliance	ISO 13209 Open Test sequence eXchange format (OTX) version 1.0.0 ISO 22901-1/ASAM MCD-2D, ODX V2.0.1. und V2.2.0 (DTS Base System) ISO 22900-3/ASAM MCD-3D, V3.0.0 (DTS Base System)
PC requirements	PC or Notebook with at least 2 GHz and 2GB RAM Screen resolution \geq 1280x1024 (XGA) recommended Supported operating systems: Windows 7 SP 1 (32 and 64 Bit)

Order Numbers

OTX1L+STUDIO	OTX Studio – complete OTX Workflow Solution including Script Editor, Compiler, Debugger and Differ based on DTS8 Base System as well as Softing-specific OTX-Extensions (ExternCall (DLL), File, XML, Trace)
OTX1L+SERVER	OTX Runtime System based on DTS8 Base System for customer applications. Includes API documentation and programming examples.
OTX1L-GUI	Optional editor for generating graphic user interfaces that can be linked to OTX sequences.
OTX1L-ADMIN	Optional extension package including: <ul style="list-style-type: none"> - support of version control (Subversion) in OTX Studio - export and import of XLIFF files for cooperation with translation agencies - editor for management of variants
OTX1L-FCE	Optional editor for the graphic creation of sequences (FlowCharts) within an OTX sequence
OTX1L-ONBOARD	On request: optional extension for configuration and execution of residual bus simulations
OTX1L-ODXGEN	In preparation: optional script generation tool for diagnostics tests
OTX1L-GENEXT	On request: generic Plugin interface

Supplementary Products and Services

DTS8L+MONACO	DTS8 Monaco, universal development tester for test and analysis tasks; incl. DTS8 Base System
OTX1L-MSP	Maintenance and service package
OTX1L-UPG	Software Upgrade for users without maintenance and service package
Creation of authoring guidelines	On request