

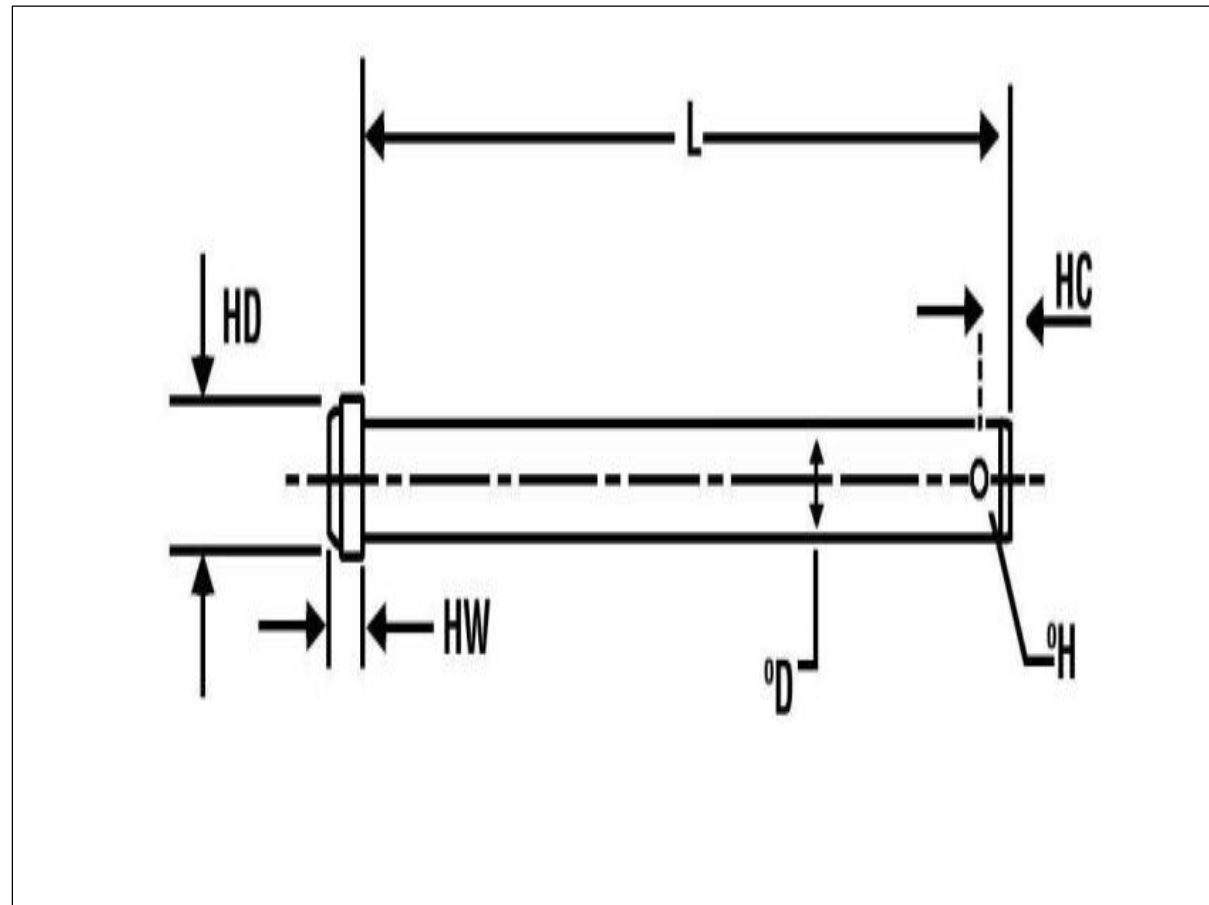
Clevis Pins

Assortment Kit Boxes Available

TASMAN INDUSTRIES

MACHINING EXCELLENCE Since 1988
ISO9001:2008

Most popular sizes are kept in stock, a short lead time for bespoke manufactured is available please ask for details.
Split Cotter Pins to suit are normally in stock



Clevis Pins

Assortment Kit Boxes Available

ENGINEERS Clevis Pins (Imperial) – Mild Steel Bright Zinc Plated and Stainless Steel A2

h11	d	3/16 "	1/4 "	5/16 "	3/8 "	1/2 "	5/8 "	3/4 "	1 "
h14	HD	5/16 "	3/8 "	7/16 "	1/2 "	5/8 "	11/16 "	15/16 "	1.3/16 "
Js14	HW	1/16 "	3/32 "	3/32 "	1/8 "	5/32 "	13.64 "	1/4 "	11/32 "
H13	H	0.078"	0.078"	0.104"	0.104"	0.135"	0.156"	0.156"	0.156"
Min	HC	0.100"	0.100"	0.140"	0.160"	0.160"	0.160"	0.160"	0.210"
All Dimensions in inches									
Diameter		3/16"	1/4"	5/16"	3/8"	1/2"	5/8"	3/4"	1 "
Length	Preferred Stock Length								
1/2"					-	-	-	-	
5/8"					-	-	-	-	
3/4"					-	-	-	-	
1"					-	-	-	-	
1.1/4"						-	-	-	
1.1/2"							-	-	
1.3/4"								-	
2"									
2.1/4"									
2.1/2"									
2.3/4"									

Clevis Pins

Assortment Kit Boxes Available

ENGINEERS Clevis Pins (Imperial) – Mild Steel Bright Zinc Plated and Stainless Steel A2

h11	d	3/16 "	1/4 "	5/16 "	3/8 "	1/2 "	5/8 "	3/4 "	1 "
h14	HD	5/16 "	3/8 "	7/16 "	1/2 "	5/8 "	11/16 "	15/16 "	1.3/16 "
Js14	HW	1/16 "	3/32 "	3/32 "	1/8 "	5/32 "	13.64 "	1/4 "	11/32 "
H13	H	0.078"	0.078"	0.104"	0.104"	0.135"	0.156"	0.156"	0.156"
Min	HC	0.100"	0.100"	0.140"	0.160"	0.160"	0.160"	0.160"	0.210"
All Dimensions in inches									
Diameter		3/16"	1/4"	5/16"	3/8"	1/2"	5/8"	3/4"	1 "
Length	Preferred Stock Length								
3"									
3.1/4"	-								
2.1/2"									
2.3/4"									
3"									
3.1/4"	-								
3.1/2"	-								
3.3/4"	-								
4"	-								

Clevis Pins

Assortment Kit Boxes Available

ENGINEERS Clevis Pins (Metric) – ISO2341B and DIN144B Mild Steel Bright Zinc Plated and Stainless Steel A2

h11	d	6	8	10	12	16	20	24
h14	HD	10	14	18	20	25	28	36
Js14	HW	2	3	4	4	4.5	5	6
H13	H	1.6	2	3.2	3.2	4	5	6.3
Min	HC	3.2	3.5	4.5	5.5	6	8	9
All Dimensions in millimetres								
Diameter	6	8	10	12	16	20	24	
Length	Preferred Stock Length							
10		-	-	-	-	-	-	
12			-	-	-	-	-	
16				-	-	-	-	
20					-	-	-	
25						-	-	
30							-	
35								
40								
50								
60	-							