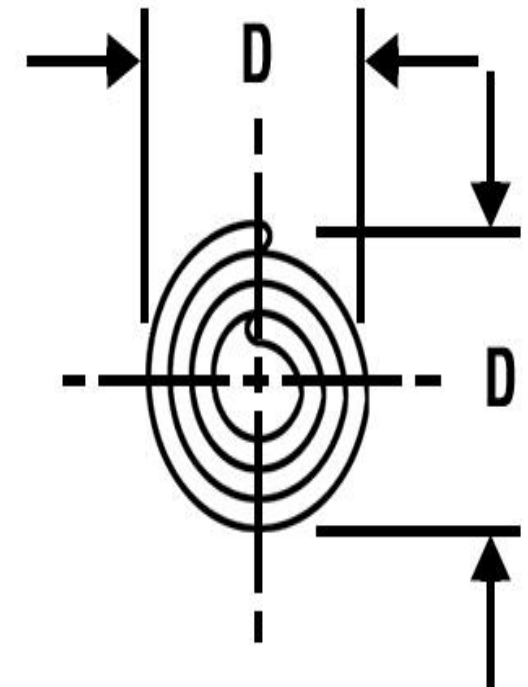
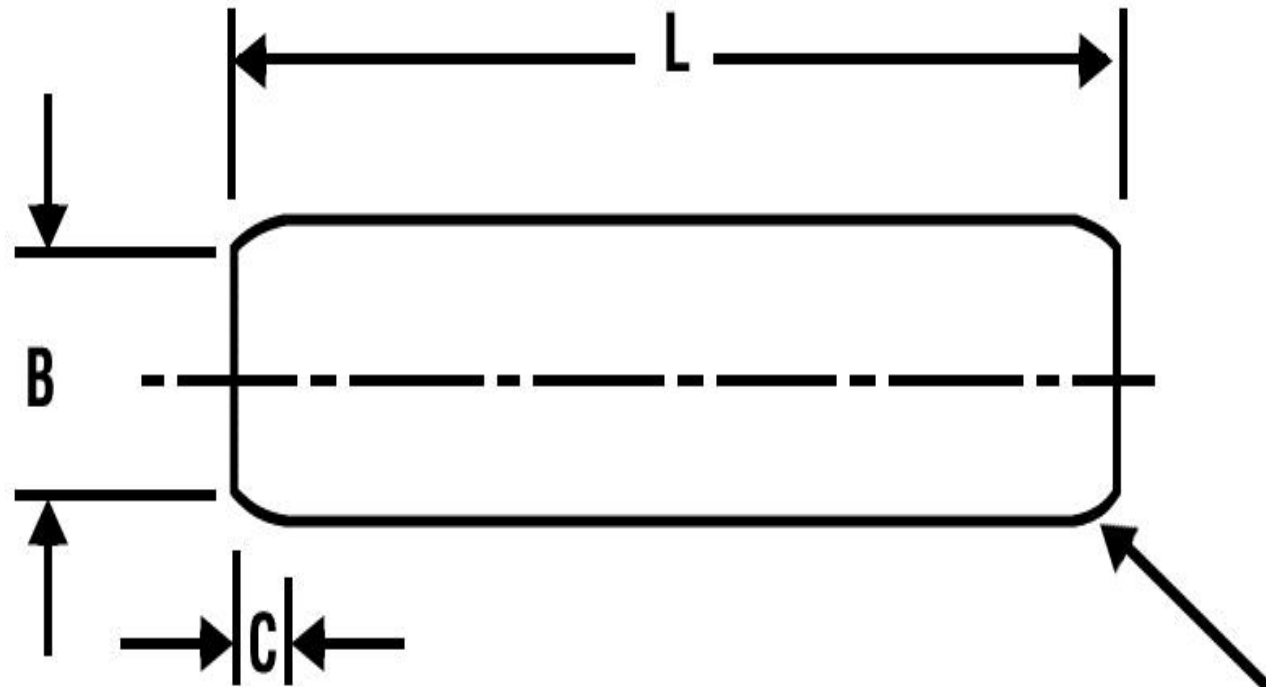


Coiled Pins

Supplied in various materials - High Carbon Steel, Chrome Stainless Steel, Nickel Stainless Steel and Alloy Steel.

TASMANINDUSTRIES

MACHINING EXCELLENCE Since 1988
ISO9001:2008



SWAGED CHAMFER BOTH ENDS

www.keysandpins.com – www.tasmanpecials.co.uk

Available to order Headed & Flared head - please ask for details.

Coiled Pins

Supplied in various materials - High Carbon Steel, Chrome Stainless Steel, Nickel Stainless Steel and Alloy Steel.

ENGINEERS Coiled Pins – Light Duty Metric – SAE 1070-1095/CS70 – SAE 51420 – SAE 30302/30304 – SAE6150H

Coiled pins in light duty are hardened to 420 to 545 HV
Available in the following finishes (Plain, oiled) (Passivated, oiled)
(Zinc plated) or (Phosphate coated).

nominal dia D	0.8mm	1mm	1.2mm	1.5mm	2mm	2.5mm	3mm	3.5mm	4mm
min	-	-	-	1.62	2.13	2.65	3.15	3.67	4.20
max	-	-	-	1.75	2.28	2.82	3.35	3.87	4.45
CHAMFER B DIA max	0.75	0.95	1.15	1.4	1.9	2.4	2.9	3.4	3.9
C LENGTH REF	0.3	0.3	0.4	0.5	0.7	0.7	0.9	1	1.1
RECOMMENDED HOLE SIZE									
MAX	0.84	1.04	1.24	1.6	2.1	2.6	3.1	3.62	4.12
MIN	0.8	1	1.2	1.5	1.99	2.49	2.99	3.48	3.98
Length tolerance's									
Up to 50mm	± 0.25								
Over 50mm	± 0.5								
Length	Preferred Stock Length								
4				-	-	-	-	-	-
5				-	-	-	-	-	-
6						-	-	-	-
8							-	-	-
10								-	-
12									
14	-	-	-						
16	-	-	-						
18	-	-	-	-					
20	-	-	-	-					
22	-	-	-	-	-				
24	-	-	-	-	-				
26	-	-	-	-	-				
28	-	-	-	-	-	-			
30	-	-	-	-	-	-	-		
35	-	-	-	-	-	-	-	-	
40	-	-	-	-	-	-	-	-	-

Coiled Pins

Supplied in various materials - High Carbon Steel, Chrome Stainless Steel, Nickel Stainless Steel and Alloy Steel.

ENGINEERS Coiled Pins – Light Duty Metric – SAE 1070-1095/CS70 – SAE 51420 – SAE 30302/30304 – SAE6150H

nominal dia D	5mm	6mm	8mm	10mm	12mm	16mm	20mm
min	5.25	6.25	8.30	10.35	12.40	-	-
max	5.50	6.50	8.63	10.80	12.85	-	-
CHAMFER B DIA max	4.85	5.85	7.8	9.75	11.7	15.6	19.6
C LENGTH REF	1.3	1.5	2	2.5	3	4	4.5
RECOMMENDED HOLE SIZE							
MAX	5.12	6.13	8.17	10.2	12.22	16.25	20.25
MIN	4.95	5.95	7.93	9.93	11.9	15.85	19.85
Length tolerance's							
Up to 50mm	± 0.25				± 0.5		
Over 50mm	± 0.5				± 0.5		
Length	Preferred Stock Length						
45						-	-
50	-					-	-
55	-					-	-
60	-	-				-	-
65	-	-				-	-
70	-	-				-	-
75	-	-				-	-
80	-	-	-			-	-
85	-	-	-			-	-
90	-	-	-	-		-	-
95	-	-	-	-		-	-
100	-	-	-	-		-	-
120	-	-	-	-		-	-

Coiled Pins

Supplied in various materials - High Carbon Steel, Chrome Stainless Steel, Nickel Stainless Steel and Alloy Steel.

ENGINEERS Coiled Pins – Light Duty Metric – SAE 1070-1095/CS70 – SAE 51420 – SAE 30302/30304 – SAE 6150H

	MINIMUM DOUBLE SHEAR STRENGTH Kn								
Nominal Dia	0.8	1	1.2	1.5	2	2.5	3	3.5	4
	Carbon/Alloy Steel & Chrome Stainless Steel								
Standard	0.4	0.6	0.9	1.45	2.5	3.9	5.5	7.5	9.6
Heavy	-	-	-	1.9	3.5	5.5	7.6	10	13.5
Light	-	-	-	0.8	1.5	2.3	3.3	4.5	5.7
	Nickel Stainless Steel								
Standard	0.3	0.45	0.65	1.05	1.9	2.9	4.2	5.7	7.6
Heavy	-	-	-	1.45	2.5	3.8	5.7	7.6	10
Light	-	-	-	0.65	1.1	1.8	2.5	3.4	4.4

	MINIMUM DOUBLE SHEAR STRENGTH Kn						
Nominal Dia	5	6	8	10	12	16	20
	Carbon/Alloy Steel & Chrome Stainless Steel						
Standard	15	22	39	62	89	-	-
Heavy	20	30	53	84	120	210	340
Light	9	13	23	-	-	-	-
	Nickel Stainless Steel						
Standard	11.5	16.8	30	48	67	-	-
Heavy	15.5	23	41	64	91	-	-
Light	7	10	18	-	-	-	-

www.keysandpins.com – www.tasmanpecials.co.uk

Available to order Headed & Flared head - please ask for details.

Coiled Pins

Supplied in various materials - High Carbon Steel, Chrome Stainless Steel, Nickel Stainless Steel and Alloy Steel.

ENGINEERS Coiled Pins – Standard Duty Metric – SAE 1070-1095/CS70 – SAE 51420 – SAE 30302/30304 – SAE 6150H

Coiled pins in standard duty are hardened to 420 to 545 HV
Available in the following finishes (Plain, oiled) (Passivated, oiled) (Zinc plated) or (Phosphate coated).
Supplied in various materials - High Carbon Steel,
Chrome Stainless Steel, Nickel Stainless Steel and Alloy Steel.

nominal dia D	0.8mm	1mm	1.2mm	1.5mm	2mm	2.5mm	3mm	3.5mm	4mm
min	0.85	1.05	1.25	1.62	2.13	2.65	3.15	3.67	4.2
max	0.91	1.15	1.35	1.73	2.25	2.78	3.3	3.84	4.4
CHAMFER B DIA max	0.75	0.95	1.15	1.4	1.9	2.4	2.9	3.4	3.9
C LENGTH REF	0.3	0.3	0.4	0.5	0.7	0.7	0.9	1	1.1
RECOMMENDED HOLE SIZE									
MAX	0.84	1.04	1.24	1.6	2.1	2.6	3.1	3.62	4.12
MIN	0.8	1	1.2	1.5	1.99	2.49	2.99	3.48	3.98
Length tolerance's									
Up to 50mm	± 0.25								
Over 50mm	± 0.5								
Length	Preferred Stock Length								
4				-	-	-	-	-	-
5				-	-	-	-	-	-
6						-	-	-	-
8							-	-	-
10								-	-
12									
14	-	-	-						
16	-	-	-						
18	-	-	-	-					
20	-	-	-	-					
22	-	-	-	-	-				
24	-	-	-	-	-				
26	-	-	-	-	-				
28	-	-	-	-	-	-			
30	-	-	-	-	-	-			
35	-	-	-	-	-	-	-		
40	-	-	-	-	-	-	-	-	

Coiled Pins

Supplied in various materials - High Carbon Steel, Chrome Stainless Steel, Nickel Stainless Steel and Alloy Steel.

TASMAN INDUSTRIES

MACHINING EXCELLENCE Since 1988
ISO9001:2008

ENGINEERS Coiled Pins – Standard Duty Metric – SAE 1070-1095/CS70 – SAE 51420 – SAE 30302/30304 – SAE6150H

nominal dia D	5mm	6mm	8mm	10mm	12mm	16mm	20mm
min	5.25	6.25	8.3	10.35	12.4	-	-
max	5.5	6.50	8.63	10.8	12.85	-	-
CHAMFER B DIA max	4.85	5.85	7.8	9.75	11.7	15.6	19.6
C LENGTH REF	1.3	1.5	2	2.5	3	4	4.5
RECOMMENDED HOLE SIZE							
MAX	5.12	6.13	8.17	10.2	12.22	16.25	20.25
MIN	4.95	5.95	7.93	9.93	11.9	15.85	19.85
Length tolerance's							
Up to 50mm	± 0.25				± 0.5		
Over 50mm	± 0.5				± 0.5		
Length	Preferred Stock Length						
8	-	-	-	-	-	-	-
10	-	-	-	-	-	-	-
12		-	-	-	-	-	-
14			-	-	-	-	-
16			-	-	-	-	-
18				-	-	-	-
20				-	-	-	-
22					-	-	-
24					-	-	-
26					-	-	-
28						-	-
30						-	-

www.keysandpins.com – www.tasmanpecials.co.uk

Available to order Headed & Flared head - please ask for details.

Coiled Pins

Supplied in various materials - High Carbon Steel, Chrome Stainless Steel, Nickel Stainless Steel and Alloy Steel.

ENGINEERS Coiled Pins – Standard Duty Metric – SAE 1070-1095/CS70 – SAE 51420 – SAE 30302/30304 – SAE6150H

nominal dia D	5mm	6mm	8mm	10mm	12mm	16mm	20mm
min	5.25	6.25	8.3	10.35	12.4	-	-
max	5.5	6.50	8.63	10.8	12.85	-	-
CHAMFER B DIA max	4.85	5.85	7.8	9.75	11.7	15.6	19.6
C LENGTH REF	1.3	1.5	2	2.5	3	4	4.5
RECOMMENDED HOLE SIZE							
MAX	5.12	6.13	8.17	10.2	12.22	16.25	20.25
MIN	4.95	5.95	7.93	9.93	11.9	15.85	19.85
Length tolerance's							
Up to 50mm	± 0.25				± 0.5		
Over 50mm	± 0.5				± 0.5		
Length	Preferred Stock Length						
35						-	-
40						-	-
45						-	-
50	-					-	-
55	-					-	-
60	-	-				-	-
65	-	-				-	-
70	-	-				-	-
75	-	-				-	-
80	-	-	-			-	-
85	-	-	-			-	-
90	-	-	-	-		-	-
95	-	-	-	-		-	-
100	-	-	-	-		-	-
120	-	-	-	-		-	-

Coiled Pins

Supplied in various materials - High Carbon Steel, Chrome Stainless Steel, Nickel Stainless Steel and Alloy Steel.

ENGINEERS Coiled Pins – Standard Duty Metric – SAE 1070-1095/CS70 – SAE 51420 – SAE 30302/30304 – SAE6150H

	MINIMUM DOUBLE SHEAR STRENGTH Kn								
Nominal Dia	0.8	1	1.2	1.5	2	2.5	3	3.5	4
	Carbon/Alloy Steel & Chrome Stainless Steel								
Standard	0.4	0.6	0.9	1.45	2.5	3.9	5.5	7.5	9.6
Heavy	-	-	-	1.9	3.5	5.5	7.6	10	13.5
Light	-	-	-	0.8	1.5	2.3	3.3	4.5	5.7
	Nickel Stainless Steel								
Standard	0.3	0.45	0.65	1.05	1.9	2.9	4.2	5.7	7.6
Heavy	-	-	-	1.45	2.5	3.8	5.7	7.6	10
Light	-	-	-	0.65	1.1	1.8	2.5	3.4	4.4

	MINIMUM DOUBLE SHEAR STRENGTH Kn						
Nominal Dia	5	6	8	10	12	16	20
	Carbon/Alloy Steel & Chrome Stainless Steel						
Standard	15	22	39	62	89	-	-
Heavy	20	30	53	84	120	210	340
Light	9	13	23	-	-	-	-
	Nickel Stainless Steel						
Standard	11.5	16.8	30	48	67	-	-
Heavy	15.5	23	41	64	91	-	-
Light	7	10	18	-	-	-	-

www.keysandpins.com – www.tasmanpecials.co.uk

Available to order Headed & Flared head - please ask for details.

Coiled Pins

Supplied in various materials - High Carbon Steel, Chrome Stainless Steel, Nickel Stainless Steel and Alloy Steel.

ENGINEERS Coiled Pins – Heavy Duty Metric – SAE 1070-1095/CS70 – SAE 51420 – SAE 30302/30304 – SAE6150H

Coiled pins in heavy duty are hardened to 420 to 545 HV

Available in the following finishes (Plain, oiled) (Passivated, oiled) (Zinc plated) or (Phosphate coated).

Supplied in various materials - High Carbon Steel, Chrome Stainless Steel, Nickel Stainless Steel and Alloy Steel.

nominal dia D	0.8mm	1mm	1.2mm	1.5mm	2mm	2.5mm	3mm	3.5mm	4mm
min	-	-	-	1.61	2.11	2.62	3.12	3.64	4.2
max	-	-	-	1.71	2.21	2.73	3.3	3.79	4.3
CHAMFER B DIA max	0.75	0.95	1.15	1.4	1.9	2.4	2.9	3.4	3.9
C LENGTH REF	0.3	0.3	0.4	0.5	0.7	0.7	0.9	1	1.1
RECOMMENDED HOLE SIZE									
MAX	0.84	1.04	1.24	1.6	2.1	2.6	3.1	3.62	4.12
MIN	0.8	1	1.2	1.5	1.99	2.49	2.99	3.48	3.98
Length tolerance's									
Up to 50mm	± 0.25								
Over 50mm	± 0.5								
Length	Preferred Stock Length								
4				hd only	hd only	-	-	-	-
5				hd only	hd only	hd only	-	-	-
6						hd only	hd only	-	-
8							hd only	hd only	hd only
10								hd only	hd only
12									
14	-	-	-						
16	-	-	-						
18	-	-	-	-					
20	-	-	-	-					
22	-	-	-	-	-				
24	-	-	-	-	-				
26	-	-	-	-	-				
28	-	-	-	-	-	-			
30	-	-	-	-	-	-			
35	-	-	-	-	-	-	-		
40	-	-	-	-	-	-	-	-	

Coiled Pins

Supplied in various materials - High Carbon Steel, Chrome Stainless Steel, Nickel Stainless Steel and Alloy Steel.

TASMANINDUSTRIES

MACHINING EXCELLENCE Since 1988
ISO9001:2008

ENGINEERS Coiled Pins – Heavy Duty Metric – SAE 1070-1095/CS70 – SAE 51420 – SAE 30302/30304 – SAE6150H

nominal dia D	5mm	6mm	8mm	10mm	12mm	16mm	20mm
min	5.15	6.18	8.25	10.3	12.35	16.4	20.4
max	5.4	6.4	8.55	10.65	12.75	16.9	21
CHAMFER B DIA max	4.85	5.85	7.8	9.75	11.7	15.6	19.6
C LENGTH REF	1.3	1.5	2	2.5	3	4	4.5
RECOMMENDED HOLE SIZE							
MAX	5.12	6.13	8.17	10.2	12.22	16.25	20.25
MIN	4.95	5.95	7.93	9.93	11.9	15.85	19.85
Length tolerance's							
Up to 50mm	± 0.25				± 0.5		
Over 50mm	± 0.5				± 0.5		
Length	Preferred Stock Length						
8	-	-	-	-	-	-	-
10	hd only	-	-	-	-	-	-
12	hd only	hd only	-	-	-	-	-
14		hd only	-	-	-	-	-
16			hd only	-	-	-	-
18			hd only	-	-	-	-
20				-	-	-	-
22				hd only	-	-	-
24					-	-	-
26					-	-	-
28					hd only	-	-
30						-	-
35						hd only	-
40						hd only	-

www.keysandpins.com – www.tasmanpecials.co.uk

Available to order Headed & Flared head - please ask for details.

Coiled Pins

Supplied in various materials - High Carbon Steel, Chrome Stainless Steel, Nickel Stainless Steel and Alloy Steel.

ENGINEERS Coiled Pins – Heavy Duty Metric – SAE 1070-1095/CS70 – SAE 51420 – SAE 30302/30304 – SAE 6150H

nominal dia D	5mm	6mm	8mm	10mm	12mm	16mm	20mm
min	5.15	6.18	8.25	10.3	12.35	16.4	20.4
max	5.4	6.4	8.55	10.65	12.75	16.9	21
CHAMFER B DIA max	4.85	5.85	7.8	9.75	11.7	15.6	19.6
C LENGTH REF	1.3	1.5	2	2.5	3	4	4.5
RECOMMENDED HOLE SIZE							
MAX	5.12	6.13	8.17	10.2	12.22	16.25	20.25
MIN	4.95	5.95	7.93	9.93	11.9	15.85	19.85
Length tolerance's							
Up to 50mm	± 0.25				± 0.5		
Over 50mm	± 0.5				± 0.5		
Length	Preferred Stock Length						
45						hd only	hd only
50	-					hd only	hd only
55	-					hd only	hd only
60	-	-				hd only	hd only
65	-	-				hd only	hd only
70	-	-				hd only	hd only
75	-	-				hd only	hd only
80	-	-	-			hd only	hd only
85	-	-	-			hd only	hd only
90	-	-	-	-		hd only	hd only
95	-	-	-	-		hd only	hd only
100	-	-	-	-		hd only	hd only
120	-	-	-	-		hd only	hd only

www.keysandpins.com – www.tasmanpecials.co.uk

Available to order Headed & Flared head - please ask for details.

Coiled Pins

Supplied in various materials - High Carbon Steel, Chrome Stainless Steel, Nickel Stainless Steel and Alloy Steel.

ENGINEERS Coiled Pins – Heavy Duty Metric – SAE 1070-1095/CS70 – SAE 51420 – SAE 30302/30304 – SAE6150H

	MINIMUM DOUBLE SHEAR STRENGTH Kn								
Nominal Dia	0.8	1	1.2	1.5	2	2.5	3	3.5	4
	Carbon/Alloy Steel & Chrome Stainless Steel								
Standard	0.4	0.6	0.9	1.45	2.5	3.9	5.5	7.5	9.6
Heavy	-	-	-	1.9	3.5	5.5	7.6	10	13.5
Light	-	-	-	0.8	1.5	2.3	3.3	4.5	5.7
	Nickel Stainless Steel								
Standard	0.3	0.45	0.65	1.05	1.9	2.9	4.2	5.7	7.6
Heavy	-	-	-	1.45	2.5	3.8	5.7	7.6	10
Light	-	-	-	0.65	1.1	1.8	2.5	3.4	4.4

	MINIMUM DOUBLE SHEAR STRENGTH Kn						
Nominal Dia	5	6	8	10	12	16	20
	Carbon/Alloy Steel & Chrome Stainless Steel						
Standard	15	22	39	62	89	-	-
Heavy	20	30	53	84	120	210	340
Light	9	13	23	-	-	-	-
	Nickel Stainless Steel						
Standard	11.5	16.8	30	48	67	-	-
Heavy	15.5	23	41	64	91	-	-
Light	7	10	18	-	-	-	-

www.keysandpins.com – www.tasmanpecials.co.uk

Available to order Headed & Flared head - please ask for details.

Coiled Pins

Supplied in various materials - High Carbon Steel, Chrome Stainless Steel, Nickel Stainless Steel and Alloy Steel.

ENGINEERS Coiled Pins – Light Duty Imperial – SAE 1070-1095/CS70 – SAE 51420 – SAE 30302/30304 – SAE6150H

Coiled pins in light duty are hardened to 420 to 545 HV
Available in the following finishes (Plain, oiled) (Passivated, oiled) (Zinc plated) or (Phosphate coated).
Supplied in various materials - High Carbon Steel, Chrome Stainless Steel, Nickel Stainless Steel and Alloy Steel.

nominal dia D	1/32	3/64	1/16	5/64	3/32	1/8	5/32	3/16
	Length tolerance's							
Up to 2"	± 0.010							
Over 2" to 3"	± 0.015							
Over 3"	± 0.025							
Length	Preferred Stock Length							
1/8			-	-	-	-	-	-
3/16				-	-	-	-	-
1/4				-	-	-	-	-
5/16						-	-	-
3/8							-	-
7/16								-
1/2								
9/16	-	-						
5/8	-	-						
3/4	-	-	-					
7/8	-	-	-	-				
1"	-	-	-	-				
1.1/8	-	-	-	-	-			
1.1/4	-	-	-	-	-			
1.3/8	-	-	-	-	-	-		
1.1/2	-	-	-	-	-	-		
1.5/8	-	-	-	-	-	-		
1.3/4	-	-	-	-	-	-		

Coiled Pins

Supplied in various materials - High Carbon Steel, Chrome Stainless Steel, Nickel Stainless Steel and Alloy Steel.

ENGINEERS Coiled Pins – Light Duty Imperial – SAE 1070-1095/CS70 – SAE 51420 – SAE 30302/30304 – SAE6150H

nominal dia D	1/4	5/16	3/8	1/2	5/8	3/4
	Length tolerance's					
Up to 2"	± 0.010			± 0.025		
Over 2" to 3"	± 0.015					
Over 3"	± 0.025					
Length	Preferred Stock Length					
5/8		-	-	-	-	-
3/4		-	-	-	-	-
7/8			-	-	-	-
1"				-	-	-
1.1/8				-	-	-
1.1/4				-	-	-
1.3/8					-	-
1.1/2					-	-
1.5/8					-	-
1.3/4					-	-
2"					-	-
2.1/4					-	-
2.1/2	-				-	-
2.3/4	-				-	-
3"	-				-	-
3.1/4	-	-			-	-
3.1/2	-	-			-	-
3.3/4	-	-	-	-	-	-
4"	-	-	-	-	-	-
4.1/2	-	-	-	-	-	-
5"	-	-	-	-	-	-

Coiled Pins

Supplied in various materials - High Carbon Steel, Chrome Stainless Steel, Nickel Stainless Steel and Alloy Steel.

ENGINEERS Coiled Pins – Light Duty Imperial – SAE 1070-1095/CS70 – SAE 51420 – SAE 30302/30304 – SAE6150H

	MINIMUM DOUBLE SHEAR STRENGTH LBS								
Nominal Dia	1/32	3/64	1/16	5/64	3/32	1/8	5/32	3/16	1/4
	Carbon/Alloy Steel & Chrome Stainless Steel								
Standard	90	190	330	550	775	1,400	2,200	3,150	5,500
Heavy	-	-	475	800	1,150	2,000	3,100	4,500	7,800
Light	-	-	205	325	475	825	1,300	1,900	3,300
	Nickel Stainless Steel								
Standard	65	145	265	425	600	1,100	1,700	2,400	4,300
Heavy	-	-	360	575	825	1,700	2,400	3,500	6,200
Light	-	-	160	250	360	650	1,000	1,450	2,600

	MINIMUM DOUBLE SHEAR STRENGTH LBS				
Nominal Dia	5/16	3/8	1/2	5/8	3/4
	Carbon/Alloy Steel & Chrome Stainless Steel				
Standard	8,700	12,600	22,500	-	-
Heavy	12,000	18,000	32,000	48,000	70,000
Light	5,200	-	-	-	-
	Nickel Stainless Steel				
Standard	6,700	9,600	17,500	-	-
Heavy	9,300	14,000	25,000	-	-
Light	4,000	-	-	-	-

www.keysandpins.com – www.tasmanpecials.co.uk

Available to order Headed & Flared head - please ask for details.

Coiled Pins

Supplied in various materials - High Carbon Steel, Chrome Stainless Steel, Nickel Stainless Steel and Alloy Steel.

ENGINEERS Coiled Pins – Light Duty Imperial – SAE 1070-1095/CS70 – SAE 51420 – SAE 30302/30304 – SAE6150H

nominal dia D	1/32	3/64	1/16	5/64	3/32	1/8	5/32	3/16
min	-	-	0.067	0.083	0.099	0.131	0.163	0.196
max	-	-	0.073	0.089	0.106	0.139	0.172	0.207
CHAMFER B DIA max	0.029	0.045	0.059	0.075	0.091	0.121	0.152	0.185
C LENGTH REF	0.024	0.024	0.028	0.032	0.038	0.044	0.048	0.055
RECOMMENDED HOLE SIZE								
MAX	0.032	0.048	0.065	0.081	0.097	0.129	0.160	0.192
MIN	0.031	0.047	0.061	0.077	0.093	0.124	0.155	0.185

nominal dia D	1/4	5/16	3/8	1/2	5/8	3/4
min	0.260	0.324	-	-	-	-
max	0.273	0.339	-	-	-	-
CHAMFER B DIA max	0.243	0.304	0.366	0.488	0.613	0.738
C LENGTH REF	0.065	0.080	0.095	0.110	0.125	0.150
RECOMMENDED HOLE SIZE						
MAX	0.256	0.319	0.383	0.510	0.635	0.760
MIN	0.247	0.308	0.370	0.493	0.618	0.743

Coiled Pins

Supplied in various materials - High Carbon Steel, Chrome Stainless Steel, Nickel Stainless Steel and Alloy Steel.

ENGINEERS Coiled Pins – Standard Duty Imperial – SAE 1070-1095/CS70 – SAE 51420 – SAE 30302/30304 – SAE6150H

Coiled pins in Standard duty are hardened to 420 to 545 HV

Available in the following finishes (Plain, oiled) (Passivated, oiled) (Zinc plated) or (Phosphate coated).

Supplied in various materials - High Carbon Steel, Chrome Stainless Steel, Nickel Stainless Steel and Alloy Steel.

nominal dia D	1/32	3/64	1/16	5/64	3/32	1/8	5/32	3/16
	Length tolerance's							
Up to 2"	± 0.010							
Over 2" to 3"	± 0.015							
Over 3"	± 0.025							
Length	Preferred Stock Length							
1/8			-	-	-	-	-	-
3/16				-	-	-	-	-
1/4				-	-	-	-	-
5/16						-	-	-
3/8							-	-
7/16								-
1/2								
9/16	-	-						
5/8	-	-						
3/4	-	-	-					
7/8	-	-	-	-				
1"	-	-	-	-				
1.1/8	-	-	-	-	-			
1.1/4	-	-	-	-	-			
1.3/8	-	-	-	-	-	-		
1.1/2	-	-	-	-	-	-		
1.5/8	-	-	-	-	-	-		
1.3/4	-	-	-	-	-	-		

Coiled Pins

Supplied in various materials - High Carbon Steel, Chrome Stainless Steel, Nickel Stainless Steel and Alloy Steel.

ENGINEERS Coiled Pins – Standard Duty Imperial – SAE 1070-1095/CS70 – SAE 51420 – SAE 30302/30304 – SAE 6150H

nominal dia D	1/4	5/16	3/8	1/2	5/8	3/4
	Length tolerance's					
Up to 2"	± 0.010			± 0.025		
Over 2" to 3"	± 0.015					
Over 3"	± 0.025					
Length	Preferred Stock Length					
5/8		-	-	-	-	-
3/4		-	-	-	-	-
7/8			-	-	-	-
1"				-	-	-
1.1/8				-	-	-
1.1/4				-	-	-
1.3/8					-	-
1.1/2					-	-
1.5/8					-	-
1.3/4					-	-
2"					-	-
2.1/4					-	-
2.1/2	-				-	-
2.3/4	-				-	-
3"	-				-	-
3.1/4	-	-			-	-
3.1/2	-	-			-	-
3.3/4	-	-	-	-	-	-
4"	-	-	-	-	-	-
4.1/2	-	-	-	-	-	-
5"	-	-	-	-	-	-

Coiled Pins

Supplied in various materials - High Carbon Steel, Chrome Stainless Steel, Nickel Stainless Steel and Alloy Steel.

ENGINEERS Coiled Pins – Standard Duty Imperial – SAE 1070-1095/CS70 – SAE 51420 – SAE 30302/30304 – SAE 6150H

Nominal Dia	MINIMUM DOUBLE SHEAR STRENGTH LBS								
	1/32	3/64	1/16	5/64	3/32	1/8	5/32	3/16	1/4
	Carbon/Alloy Steel & Chrome Stainless Steel								
Standard	90	190	330	550	775	1,400	2,200	3,150	5,500
Heavy	-	-	475	800	1,150	2,000	3,100	4,500	7,800
Light	-	-	205	325	475	825	1,300	1,900	3,300
	Nickel Stainless Steel								
Standard	65	145	265	425	600	1,100	1,700	2,400	4,300
Heavy	-	-	360	575	825	1,700	2,400	3,500	6,200
Light	-	-	160	250	360	650	1,000	1,450	2,600

Nominal Dia	MINIMUM DOUBLE SHEAR STRENGTH LBS				
	5/16	3/8	1/2	5/8	3/4
	Carbon/Alloy Steel & Chrome Stainless Steel				
Standard	8,700	12,600	22,500	-	-
Heavy	12,000	18,000	32,000	48,000	70,000
Light	5,200	-	-	-	-
	Nickel Stainless Steel				
Standard	6,700	9,600	17,500	-	-
Heavy	9,300	14,000	25,000	-	-
Light	4,000	-	-	-	-

www.keysandpins.com – www.tasmanpecials.co.uk

Available to order Headed & Flared head - please ask for details.

Coiled Pins

Supplied in various materials - High Carbon Steel, Chrome Stainless Steel, Nickel Stainless Steel and Alloy Steel.

ENGINEERS Coiled Pins – Standard Duty Imperial – SAE 1070-1095/CS70 – SAE 51420 – SAE 30302/30304 – SAE 6150H

nominal dia D	1/32	3/64	1/16	5/64	3/32	1/8	5/32	3/16
min	0.033	0.049	0.067	0.083	0.099	0.131	0.163	0.196
max	0.035	0.052	0.072	0.088	0.105	0.138	0.171	0.205
CHAMFER B DIA max	0.029	0.045	0.059	0.075	0.091	0.121	0.152	0.185
C LENGTH REF	0.024	0.024	0.028	0.032	0.038	0.044	0.048	0.055
RECOMMENDED HOLE SIZE								
MAX	0.032	0.048	0.065	0.081	0.097	0.129	0.160	0.192
MIN	0.031	0.047	0.061	0.077	0.093	0.124	0.155	0.185

nominal dia D	1/4	5/16	3/8	1/2	5/8	3/4
min	0.260	0.324	0.388	0.516	-	-
max	0.271	0.337	0.403	0.535	-	-
CHAMFER B DIA max	0.243	0.304	0.366	0.488	0.613	0.738
C LENGTH REF	0.065	0.080	0.095	0.110	0.125	0.150
RECOMMENDED HOLE SIZE						
MAX	0.256	0.319	0.383	0.510	0.635	0.760
MIN	0.247	0.308	0.370	0.493	0.618	0.743

Coiled Pins

Supplied in various materials - High Carbon Steel, Chrome Stainless Steel, Nickel Stainless Steel and Alloy Steel.

TASMAN INDUSTRIES

MACHINING EXCELLENCE Since 1988
ISO9001:2008

ENGINEERS Coiled Pins – Heavy Duty Imperial – SAE 1070-1095/CS70 – SAE 51420 – SAE 30302/30304 – SAE 6150H

Coiled pins in Heavy duty are hardened to 420 to 545 HV

Available in the following finishes (Plain, oiled) (Passivated, oiled) (Zinc plated) or (Phosphate coated).

Supplied in various materials - High Carbon Steel, Chrome Stainless Steel, Nickel Stainless Steel and Alloy Steel

nominal dia D	1/32	3/64	1/16	5/64	3/32	1/8	5/32	3/16
	Length tolerance's							
Up to 2"	± 0.010							
Over 2" to 3"	± 0.015							
Over 3"	± 0.025							
Length	Preferred Stock Length							
1/8			-	-	-	-	-	-
3/16				Hd	Hd	-	-	-
1/4				Hd	Hd	Hd	-	-
5/16						Hd	Hd	-
3/8							Hd	Hd
7/16								Hd
1/2								
9/16	-	-						
5/8	-	-						
3/4	-	-	-					
7/8	-	-	-	-				
1"	-	-	-	-				
1.1/8	-	-	-	-	-			
1.1/4	-	-	-	-	-			
1.3/8	-	-	-	-	-	-		
1.1/2	-	-	-	-	-	-		
1.5/8	-	-	-	-	-	-		
1.3/4	-	-	-	-	-	-		

www.keysandpins.com – www.tasmanpecials.co.uk

Available to order Headed & Flared head - please ask for details.

Coiled Pins

Supplied in various materials - High Carbon Steel, Chrome Stainless Steel, Nickel Stainless Steel and Alloy Steel.

TASMAN INDUSTRIES

MACHINING EXCELLENCE Since 1988
ISO9001:2008

ENGINEERS Coiled Pins – Heavy Duty Imperial – SAE 1070-1095/CS70 – SAE 51420 – SAE 30302/30304 – SAE 6150H

nominal dia D	1/4	5/16	3/8	1/2	5/8	3/4
	Length tolerance's					
Up to 2"	± 0.010			± 0.025		
Over 2" to 3"	± 0.015					
Over 3"	± 0.025					
Length	Preferred Stock Length					
1/2	Hd	-	-	-	-	-
9/16	Hd	-	-	-	-	-
5/8	Hd	Hd	-	-	-	-
3/4	Hd	Hd	Hd	-	-	-
7/8	Hd	Hd	Hd	-	-	-
1"	Hd	Hd	Hd	-	-	-
1.1/8	Hd	Hd	Hd	-	-	-
1.1/4	Hd	Hd	Hd	Hd	-	-
1.3/8	Hd	Hd	Hd	Hd	-	-
1.1/2	Hd	Hd	Hd	Hd	Hd	-
1.5/8	Hd	Hd	Hd	Hd	Hd	-
1.3/4	Hd	Hd	Hd	Hd	Hd	-
2"	Hd	Hd	Hd	Hd	Hd	Hd
2.1/4	Hd	Hd	Hd	Hd	Hd	Hd
2.1/2	-	Hd	Hd	Hd	Hd	Hd
2.3/4	-	Hd	Hd	Hd	Hd	Hd
3"	-	Hd	Hd	Hd	Hd	Hd
3.1/4	-	-	Hd	Hd	Hd	Hd
3.1/2	-	-	Hd	Hd	Hd	Hd
3.3/4	-	-	-	-	Hd	Hd
4"	-	-	-	-	Hd	Hd
4.1/2	-	-	-	-	Hd	Hd
5"	-	-	-	-	Hd	Hd

www.keysandpins.com – www.tasmanpecials.co.uk

Available to order Headed & Flared head - please ask for details.

Coiled Pins

Supplied in various materials - High Carbon Steel, Chrome Stainless Steel, Nickel Stainless Steel and Alloy Steel.

ENGINEERS Coiled Pins – Heavy Duty Imperial – SAE 1070-1095/CS70 – SAE 51420 – SAE 30302/30304 – SAE 6150H

	MINIMUM DOUBLE SHEAR STRENGTH LBS								
Nominal Dia	1/32	3/64	1/16	5/64	3/32	1/8	5/32	3/16	1/4
	Carbon/Alloy Steel & Chrome Stainless Steel								
Standard	90	190	330	550	775	1,400	2,200	3,150	5,500
Heavy	-	-	475	800	1,150	2,000	3,100	4,500	7,800
Light	-	-	205	325	475	825	1,300	1,900	3,300
	Nickel Stainless Steel								
Standard	65	145	265	425	600	1,100	1,700	2,400	4,300
Heavy	-	-	360	575	825	1,700	2,400	3,500	6,200
Light	-	-	160	250	360	650	1,000	1,450	2,600

	MINIMUM DOUBLE SHEAR STRENGTH LBS				
Nominal Dia	5/16	3/8	1/2	5/8	3/4
	Carbon/Alloy Steel & Chrome Stainless Steel				
Standard	8,700	12,600	22,500	-	-
Heavy	12,000	18,000	32,000	48,000	70,000
Light	5,200	-	-	-	-
	Nickel Stainless Steel				
Standard	6,700	9,600	17,500	-	-
Heavy	9,300	14,000	25,000	-	-
Light	4,000	-	-	-	-

www.keysandpins.com – www.tasmanpecials.co.uk

Available to order Headed & Flared head - please ask for details.

Coiled Pins

Supplied in various materials - High Carbon Steel, Chrome Stainless Steel, Nickel Stainless Steel and Alloy Steel.

ENGINEERS Coiled Pins – Heavy Duty Imperial – SAE 1070-1095/CS70 – SAE 51420 – SAE 30302/30304 – SAE6150H

nominal dia D	1/32	3/64	1/16	5/64	3/32	1/8	5/32	3/16
min	-	-	0.066	0.082	0.098	0.130	0.161	0.194
max	-	-	0.070	0.086	0.103	0.136	0.168	0.202
CHAMFER B DIA max	0.029	0.045	0.059	0.075	0.091	0.121	0.152	0.185
C LENGTH REF	0.024	0.024	0.028	0.032	0.038	0.044	0.048	0.055
	RECOMMENDED HOLE SIZE							
MAX	0.032	0.048	0.065	0.081	0.097	0.129	0.160	0.192
MIN	0.031	0.047	0.061	0.077	0.093	0.124	0.155	0.185

nominal dia D	1/4	5/16	3/8	1/2	5/8	3/4
min	0.258	0.322	0.386	0.514	0.640	0.766
max	0.268	0.334	0.400	0.532	0.658	0.784
CHAMFER B DIA max	0.243	0.304	0.366	0.488	0.613	0.738
C LENGTH REF	0.065	0.080	0.095	0.110	0.125	0.150
	RECOMMENDED HOLE SIZE					
MAX	0.256	0.319	0.383	0.510	0.635	0.760
MIN	0.247	0.308	0.370	0.493	0.618	0.743