

Solid, Split & Extractable Taper Pins

Bespoke manufacture available

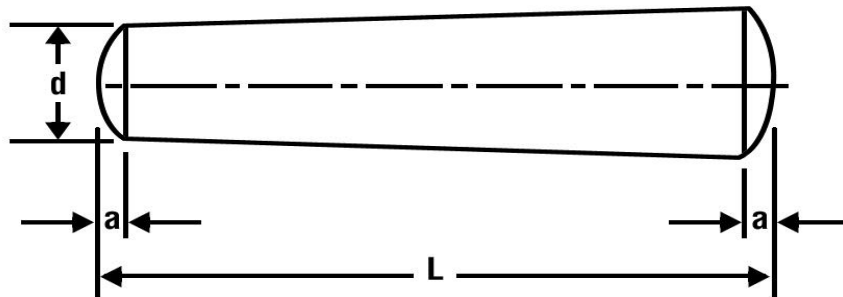
TASMANINDUSTRIES

MACHINING EXCELLENCE Since 1988
ISO9001:2008

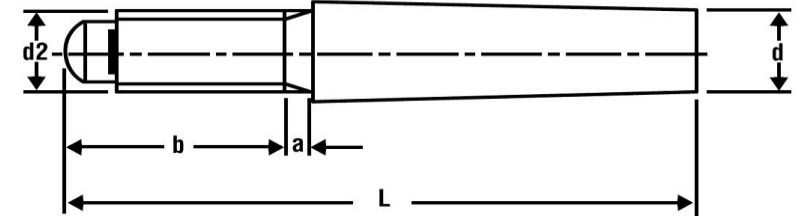
Solid and Split taper pins available in various material formats as above to suit different applications.

To measure the length of the taper pin exclude the slightly convex ends. The diameter for imperial taper pins is measured from the large end unlike metric which are measured at the small end.

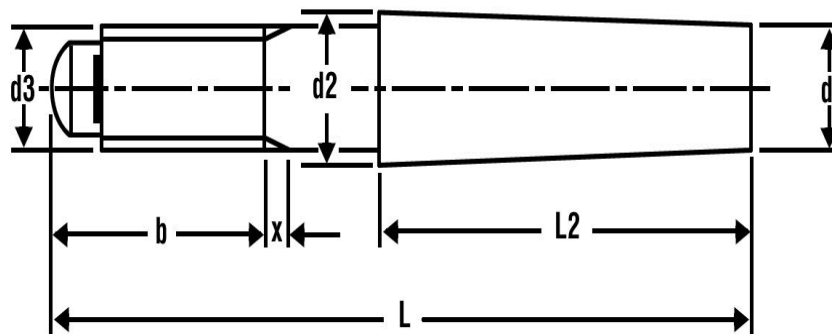
Solid Taper Pin



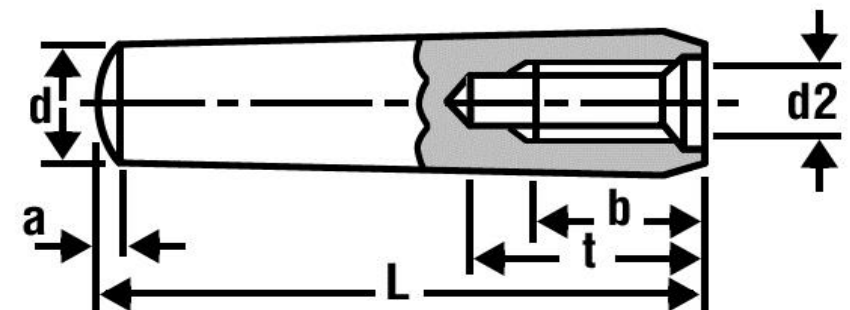
DIN7977 – ISO8737



Din 258



DIN7978 – ISO8736



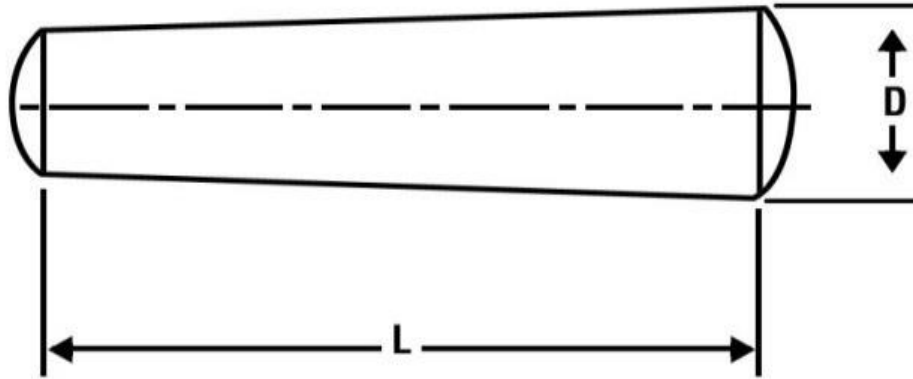
Solid, Split & Extractable Taper Pins

Bespoke manufacture available

TASMANINDUSTRIES

MACHINING EXCELLENCE Since 1988
ISO9001:2008

BS46 Part 3



Length Tolerance

Up to and including 2" ± 0.015 in

Above 2" up to and including 6" ± 0.040 in

Taper Tolerance

± 0.0005 in. per inch

Split Information

The length of the split shall be not less than 20 per cent of the nominal length of the pin.

Minimum Brinell Hardness

Class A and B Solid 121 Split 111

Class C and D Solid 248 Split 248

Large Diameter Tolerance

For nominal sizes up to and including $7/32$ " $+ 0.000$ in

- 0.002in

For nominal sizes $1/4$ and above $+ 0.000$ in

- 0.004 in

Solid, Split & Extractable Taper Pins

Bespoke manufacture available

TASMANINDUSTRIES

MACHINING EXCELLENCE Since 1988
ISO9001:2008

ENGINEERS Taper Pins – Metric DIN I A and B – Mild Steel and Stainless Steel

	h10 Tolerance dia d STANDARD TAPER 1:50									
nominal dia d	0.6	0.8	1	1.5	2	2.5	3	4	5	6
Length	Preferred Stock Length									
4		-	-	-	-	-	-	-	-	-
6			-	-	-	-	-	-	-	-
8				-	-	-	-	-	-	-
10					-	-	-		-	
12	-						-		-	
14	-								-	
16	-	-							-	
18	-	-							-	
20	-	-	-							
24	-	-	-							
28	-	-	-	-						
30	-	-	-	-	-	-	-	-	-	-
32	-	-	-	-						
36	-	-	-	-						
40	-	-	-	-	-	-				
45	-	-	-	-	-	-				
50	-	-	-	-	-	-				
55	-	-	-	-	-	-	-			
60	-	-	-	-	-	-	-			
70	-	-	-	-	-	-	-	-		
80	-	-	-	-	-	-	-	-	-	
90	-	-	-	-	-	-	-	-	-	

Solid, Split & Extractable Taper Pins

Bespoke manufacture available

TASMANINDUSTRIES

MACHINING EXCELLENCE Since 1988
ISO9001:2008

ENGINEERS Taper Pins – Metric DINI A and B – Mild Steel and Stainless Steel

	h10 Tolerance dia d STANDARD TAPER 1:50						
nominal dia d	8	10	12	14	16	20	25
Length	Preferred Stock Length						
28		-	-	-	-	-	-
30		-	-	-	-	-	-
32			-	-	-	-	-
36					-	-	-
40						-	-
45						-	-
50							-
55							
60							
70							
80							
90							
100							
110							
120							
130	-						
140	-						
150	-	-					
165	-	-					
180	-	-	-	-			
200	-	-	-	-			
230	-	-	-	-			
260	-	-	-	-	-	-	

Solid, Split & Extractable Taper Pins

Bespoke manufacture available

ENGINEERS Taper Pins – Metric DIN I A and B – Mild Steel and Stainless Steel

nominal dia d h10	0.6	0.8	1	1.5	2	2.5	3	4	5
d h10	+0.00								
	-0.040						-0.048		
a max	0.1	0.12	0.15	0.23	0.3	0.4	0.45	0.6	0.75
radius on dome	»								
	0.6	0.8	1	1.5	2	2.5	3	4	5

nominal dia d h10	6	8	10	12	14	16	20	25	
d h10	+0.00								
	-0.048	-0.058		-0.070			-0.084		
a max	0.9	1.2	1.5	1.8	2	2.5	3	4	
radius on dome	»								
	6	8	10	12	16	16	20	25	

Solid, Split & Extractable Taper Pins

Bespoke manufacture available

ENGINEERS Taper Pins – Metric DIN258 – Mild Steel Stainless Steel

	1:50 TAPER									
nominal dia d	5	6	8	10	12	14	16	20	25	30
Length	Preferred Stock Length									
40		-	-	-	-	-	-	-	-	-
45			-	-	-	-	-	-	-	-
50			-	-	-	-	-	-	-	-
55	-		-	-	-	-	-	-	-	-
60	-			-	-	-	-	-	-	-
65	-	-			-	-	-	-	-	-
75	-	-			-	-	-	-	-	-
85	-	-	-				-	-	-	-
100	-	-	-				-	-	-	-
120	-	-	-	-					-	-
140	-	-	-	-						-
160	-	-	-	-	-	-				
190	-	-	-	-	-	-	-			
220	-	-	-	-	-	-	-	-		
250	-	-	-	-	-	-	-	-		
280	-	-	-	-	-	-	-	-	-	
320	-	-	-	-	-	-	-	-	-	-
360	-	-	-	-	-	-	-	-	-	-

Solid, Split & Extractable Taper Pins

Bespoke manufacture available

TASMANINDUSTRIES

MACHINING EXCELLENCE Since 1988
ISO9001:2008

ENGINEERS Taper Pins – Metric DIN258 – Mild Steel Stainless Steel

nominal dia d	1:50 TAPER	
	40	50
Length	Preferred Stock Length	
40	-	-
45	-	-
50	-	-
55	-	-
60	-	-
65	-	-
75	-	-
85	-	-
100	-	-
120	-	-
140	-	-
160	-	-
190		-
220		
250		
280		
320		
360	-	

Solid, Split & Extractable Taper Pins

Bespoke manufacture available

ENGINEERS Taper Pins – Metric DIN258 – Mild Steel Stainless Steel

nominal dia d h10	5	6	8	10	12	14	16	20	25	30
d h10	+0.00									
	-0.048		-0.058			-0.070			-0.084	
d2 »	5.5	6.6	8.8	10.9	13.1	15.3	17.4	21.7	27	32.2
d3	M5	M6	M8	M10	M12	M12	M16	M16	M20	M24
l2	25	30	40	45	55	65	72	85	100	110
nominal dia d h10	40	50								
d h10	+0.00									
	-0.100									
d2 »	42.6	53								
d3	M30	M36								
l2	130	150								

Solid, Split & Extractable Taper Pins

Bespoke manufacture available

TASMANINDUSTRIES

MACHINING EXCELLENCE Since 1988
ISO9001:2008

ENGINEERS Taper Pins – Metric DIN7977 / ISO8737 – Mild Steel Stainless Steel

nominal dia d	1:50 TAPER									
	5	6	8	10	12	16	20	25	30	40
Length	Preferred Stock Length									
40		-	-	-	-	-	-	-	-	-
45			-	-	-	-	-	-	-	-
50				-	-	-	-	-	-	-
55	-			-	-	-	-	-	-	-
60	-			-	-	-	-	-	-	-
65	-				-	-	-	-	-	-
75	-					-	-	-	-	-
85	-						-	-	-	-
100	-	-						-	-	-
120	-	-	-	-					-	-
140	-	-	-	-	-					-
160	-	-	-	-	-	-				
190	-	-	-	-	-	-	-			
220	-	-	-	-	-	-	-			
250	-	-	-	-	-	-	-			
280	-	-	-	-	-	-	-	-	-	
320	-	-	-	-	-	-	-	-	-	
360	-	-	-	-	-	-	-	-	-	-

Solid, Split & Extractable Taper Pins

Bespoke manufacture available

TASMANINDUSTRIES

MACHINING EXCELLENCE Since 1988
ISO9001:2008

ENGINEERS Taper Pins – Metric DIN7977 / ISO8737 – Mild Steel Stainless Steel

	1:50 TAPER	
nominal dia d	50	-
Length	Preferred Stock Length	
40	-	-
45	-	-
50	-	-
55	-	-
60	-	-
65	-	-
75	-	-
85	-	-
100	-	-
120	-	-
140	-	-
160	-	-
190		-
220		-
250		-
280		-
320		-
360		-

Solid, Split & Extractable Taper Pins

Bespoke manufacture available

ENGINEERS Taper Pins – Metric DIN7977 / ISO8737 – Mild Steel Stainless Steel

nominal dia d h10	5	6	8	10	12	16	20	25	30	40
d h10	+0.00									
	-0.048		-0.058		-0.070		-0.084		-0.100	
d2	M5	M6	M8	M10	M12	M16	M16	M20	M24	M30
b min	14	18	22	24	27	35	35	40	46	58
b max	15.6	20	24.5	27	30.5	39	39	45	52	65
a	2.4	3	4	4.5	5.3	6	6	7.5	9	10.5
nominal dia d h10	50									
d h10	+0.00									
	-0.100									
d2	M36									
b min	70									
b max	78									
a	12									

Solid, Split & Extractable Taper Pins

Bespoke manufacture available

TASMANINDUSTRIES

MACHINING EXCELLENCE Since 1988
ISO9001:2008

ENGINEERS Taper Pins – Metric DIN7978 / ISO8736 – Mild Steel Stainless Steel

nominal dia d	1:50 TAPER									
	6	8	10	12	14	16	20	25	30	40
Length	Preferred Stock Length									
16		-	-	-	-	-	-	-	-	-
20			-	-	-	-	-	-	-	-
24				-	-	-	-	-	-	-
28					-	-	-	-	-	-
32						-	-	-	-	-
36							-	-	-	-
40								-	-	-
45									-	-
50										-
55										-
60	-									-
70	-									-
80	-									-
90	-									
100	-	-								
110	-	-								
120	-	-	-							
130	-	-	-							
140	-	-	-	-						
150	-	-	-	-	-					
165	-	-	-	-	-	-				
180	-	-	-	-	-	-				
200	-	-	-	-	-	-	-			
230	-	-	-	-	-	-	-			
260	-	-	-	-	-	-	-			

Solid, Split & Extractable Taper Pins

Bespoke manufacture available

ENGINEERS Taper Pins – Metric DIN7978 / ISO8736 – Mild Steel Stainless Steel

nominal dia d	1:50 TAPER	
	50	-
Length	Preferred Stock Length	
16	-	-
20	-	-
24	-	-
28	-	-
32	-	-
36	-	-
40	-	-
45	-	-
50	-	-
55	-	-
60	-	-
70	-	-
80	-	-
90	-	-
100	-	-
110		-
120		-
130		-
140		-
150		-
165		-
180		-
200		-
230		-
260		-

Solid, Split & Extractable Taper Pins

Bespoke manufacture available

ENGINEERS Taper Pins – Metric DIN7978 / ISO8736 – Mild Steel Stainless Steel

nominal dia d h10	6	8	10	12	14	16	20	25	30	40
d h10	+0.00									
	-0.048	-0.058		-0.070			-0.084		-0.100	
d2	M4	M5	M6	M8	M8	M10	M12	M16	M20	M20
b	6	8	10	12	12	16	18	24	30	30
t	10.0	12	16.0	20	20.0	25	27	34	42	42
a	0.8	1	1.2	1.6	1.6	2	2.5	3	4	5
nominal dia d h10	50									
d h10	+0.00									
	-0.100									
d2	M24									
b	36									
t	50									
a	6.3									

Solid, Split & Extractable Taper Pins

Bespoke manufacture available

ENGINEERS Taper Pins – Imperial BS46 Part3 – Steel EN1A – EN3B – EN16T – Stainless Steel EN57T

	1:48 TAPER or 1/4" per foot or 0.0208" per inch									
nominal dia D	1/16	5/64	3/32	1/8	5/32	3/16	7/32	1/4	9/32	5/16
Length	Preferred Stock Length									
3/8				-	-	-	-	-	-	-
1/2					-	-	-	-	-	-
5/8						-	-	-	-	-
3/4							-	-	-	-
7/8							-	-	-	-
1									-	-
1.1/4									-	-
1.1/2	-									
1.3/4	-	-								
2	-	-								
2.1/4	-	-	-							
2.1/2	-	-	-	-						
2.3/4	-	-	-	-	-					
3	-	-	-	-	-					
3.1/4	-	-	-	-	-	-				
3.1/2	-	-	-	-	-	-	-			
3.3/4	-	-	-	-	-	-	-	-		
4	-	-	-	-	-	-	-	-		
4.1/2	-	-	-	-	-	-	-	-	-	
5	-	-	-	-	-	-	-	-	-	-
5.1/2	-	-	-	-	-	-	-	-	-	-
6	-	-	-	-	-	-	-	-	-	-
6.1/2	-	-	-	-	-	-	-	-	-	-
7	-	-	-	-	-	-	-	-	-	-
7.1/2	-	-	-	-	-	-	-	-	-	-
8	-	-	-	-	-	-	-	-	-	-

Solid, Split & Extractable Taper Pins

Bespoke manufacture available

ENGINEERS Taper Pins – Imperial BS46 Part3 – Steel EN1A – EN3B – EN16T – Stainless Steel EN57T

	1:48 TAPER or 1/4" per foot or 0.0208" per inch					
nominal dia D	3/8	7/16	1/2	5/8	3/4	7/8
Length	Preferred Stock Length					
3/8	-	-	-	-	-	-
1/2	-	-	-	-	-	-
5/8	-	-	-	-	-	-
3/4	-	-	-	-	-	-
7/8	-	-	-	-	-	-
1	-	-	-	-	-	-
1.1/4	-	-	-	-	-	-
1.1/2	-	-	-	-	-	-
1.3/4	-	-	-	-	-	-
2		-	-	-	-	-
2.1/4		-	-	-	-	-
2.1/2		-	-	-	-	-
2.3/4		-	-	-	-	-
3				-	-	-

Solid, Split & Extractable Taper Pins

Bespoke manufacture available

ENGINEERS Taper Pins – Imperial BS46 Part3 – Steel EN1A – EN3B – EN16T – Stainless Steel EN57T

nominal dia D	1:48 TAPER or 1/4" per foot or 0.0208" per inch					
	3/8	7/16	1/2	5/8	3/4	7/8
3.1/4				-	-	-
3.1/2				-	-	-
3.3/4				-	-	-
4					-	-
4.1/2					-	-
5						-
5.1/2						-
6	-					
6.1/2	-				-	-
7	-	-				
7.1/2	-	-	-		-	-
8	-	-	-			

Solid, Split & Extractable Taper Pins

Bespoke manufacture available

ENGINEERS Taper Pins – Imperial BS46 Part3 – Steel EN1A – EN3B – EN16T – Stainless Steel EN57T

nominal dia D	1/16	5/64	3/32	1/8	5/32	3/16	7/32	1/4	9/32	5/16
min	0.0605	0.0761	0.0918	0.123	0.1542	0.1855	0.2618	0.246	0.2772	0.3085
max	0.0625	0.0781	0.0938	0.125	0.1562	0.1875	0.2188	0.250	0.2812	0.3125

nominal dia D	3/8	7/16	1/2	5/8	3/4	7/8	
min	0.371	0.4335	0.496	0.621	0.746	0.871	
Max	0.375	0.4375	0.500	0.625	0.750	0.875	