

Ultra Durable IP68 Rated Linear Lighting - UV / IR Protective Coating - Power up to 30 Metres in a Single Run

Outdoor LED Strip is a combination of SMD LEDs and extrusion technology. The (Surface Mounted Diode) PCB plate onto which the LEDs have been mounted has been enveloped with a transparent, UV/IR-protected PVC housing. The result is a high-quality product with which you can create colorful and amazing linear light accents. It is a very efficient and multi-purpose solution for various architectural in- and outdoor applications.

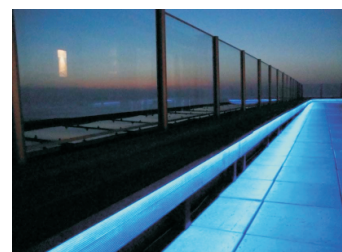


Properties

- Flexible linear lighting
- Very clear SMD LEDs
- Low energy consumption and high light yield
- Protected against humidity: IP68
- Available in different fixed colours and RGB
- No maintenance and durable
- Minimal heat generation
- Long extension leads
- Possibilities to shorten, connect and roll
- Extremely functional and multi-purpose
- Dimmable
- Accessories included

ArchiFlex™ is available in 8 different fixed colours (amber, red, green, blue, pink, purple, white, warm white) and RGB. With the RGB-edition you can mix fascinating colours and with diverse light programs and fixed colour adjustments you can determine the exact colour and atmosphere. The bespoke lining of the fixed colours (6x12mm) differs from the RGB (12x17mm). Special connection and fitting material has been developed for both measures.

Beside the different sizes, the power (fixed colour: 3.6W/m, RGB: 7.2W/m) and the maximum connecting length also differ. Apart from that, nearly all technical specifications are the same. The LED distance for single color strip is 23.8mm, it can be cuttable every 16.6cm. And the distance for RGB strip, the LED distance is 35.7mm, cuttable every 25cm (equal to 7 LEDs).



Accessories

For the fitting we deliver mounting materials such as U-shape clips, and aluminum profiles. You can fit the strip in numerous ways, such as:

- Sinking in wood (having cut out the wood)
- Gluing
- Mounting in various aluminum profiles
- Grouting
- Etc.

Entertainment & leisure

- Stage, theatre, club or casino lighting
- Pool, health spa, sauna lighting

Applications

Because of its versatility and many advantages the LED Light Strip is suitable for many applications in various categories:

Architecture, ambience & decorative lighting

- Accent lighting
- Contour lighting
- Cove lighting
- Recessed lighting
- Route-, marking lighting
- Stair-, doorstep and skirting lighting
- Floodlight

Technical parameters

- Available colors: red, amber, blue, green, pink, purple, white, warm white, RGB
- LED: topview SMD LED
- Beam angle: 120°
- Voltage :24V DC
- Weight : 125g/m for monochrome and 285g/m for multicolor
- Packing method: spool
- Spool length: 30m
- Section length: single color 16.6cm, RGB 25cm
- Number of LEDs: 7 per section/35 per meter
- Dimmable: yes

Displays & advertising

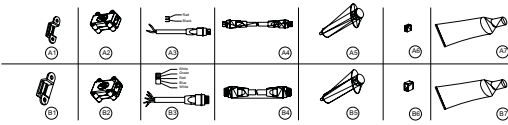
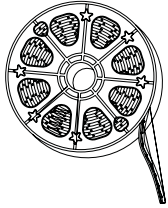
- Lettering
- Advertising lighting
- Display lighting

General lighting

- Emergency and safety lighting
- Retail, corporate, public, residential



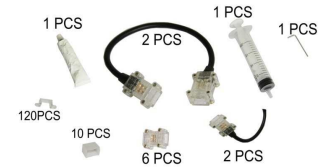
Outdoor LED Strip



Accessories

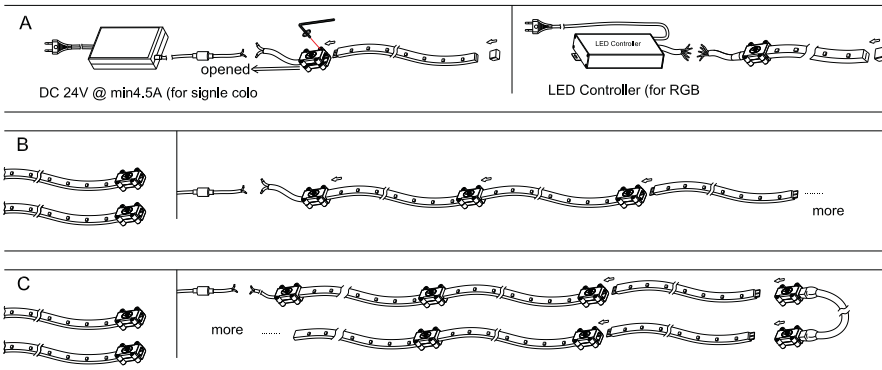
For the fitting we deliver mounting materials such as U-shape clips, and aluminum profiles. You can fit the outdoor LED Strip in numerous ways, such as:

- Sinking in wood (having cut out the wood)
- Gluing
- Mounting in various aluminum profiles

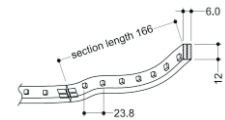


Model Number	A1	A2	A3	A4	A5	A6	A7		B1	B2	B3	B4	B5	B6	B7
Item name	Mounting clip	Connector	pig tail	jumper	syringe	Silicon end cap	Silicon gel		Mounting clip	Connector	pig tail	jumper	syringe	Silicon end cap	Silicon gel cap
Qty per reel(pcs)	120	6	2	2	1	10	1		120	6	2	2	1	10	1
Descriptions	For single color								For RGB						

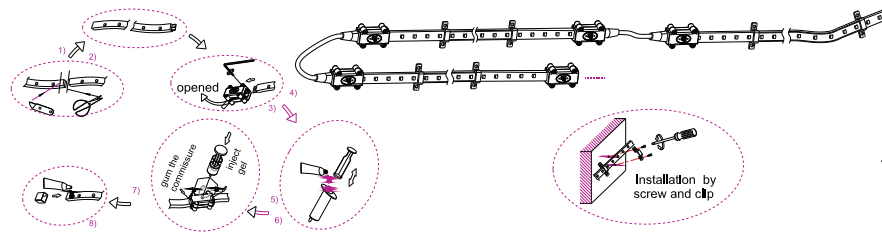
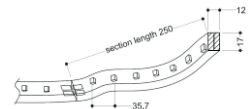
Link options



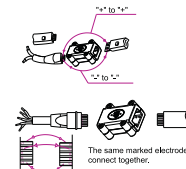
Single color size:



RGB size:



Notice:



Technical parameters

Model Number	Color	Length (m)	LED Qty	LED Type	Light Output (lumen/m)	Beam Angle (degrees)	Voltage (V DC)	Current (Amps/m)	Max.Power Consumption (W/m)	IP	Continuous Connection (m)
30MFL-1260SMD-R-1	Red	5	42	3528 SMD LED	25	120	24	0.12	2.88	68	30
30MFL-1260SMD-Y-1	Yellow	5	42		20	120	24	0.12	2.88	68	30
30MFL-1260SMD-B-1	Blue	5	42		30	120	24	0.12	2.88	68	30
30MFL-1260SMD-G-1	Green	5	42		130	120	24	0.12	2.88	68	30
30MFL-1260SMD-V-1	Violet	5	42		5	120	24	0.12	2.88	68	30
30MFL-1260SMD-CW-1	White	5	42		230	120	24	0.12	2.88	68	30
30MFL-1260SMD-WW-1	Warm white	5	42		210	120	24	0.12	2.88	68	30
30MFL-1260SMD-CW	White	5	42	5050 SMD LED	300	120	24	0.15	3.6	68	30
30MFL-1260SMD-WW	Warm White	5	42		240	120	24	0.15	3.6	68	30
30MFL-1260SMD-RGB	RGB	5	28		110	120	24	0.24	5.76	68	30

- 1) Use scissors to cut along the mark lines on PCB
- 2) Use a knife to weed the PVC encapsulation around the PCB end. Caution should be taken not to scratch the copper circuit.
- 3) Loosen the 4 allen screws with a wrench.
- 4) Insert the exposed PCB into connector straightly and tighten the bolts
- 5) Pull back the piston of syringe
- 6) Fill in the syringe with silicon gel
- 7) Inject the gel through the hole of the connector back, until the gel overflows through the 2 holes on the front of connector
- 8) Seal the strip with an end cap and silicon gel

Safety Information

- The strip itself and all its components may not be mechanically stressed.
- Assembly must not damage or destroy conducting paths on the circuit board.
- Installation of LED ribbon (with power supplies) needs to be made with regard to all applicable electrical and safety standards. Only qualified personnel should be allowed to perform installations.
- Correct electrical polarity needs to be observed. Wrong polarity may destroy the strip.
- Parallel connection is highly recommended as safe electrical operation mode.
- Serial connection is not recommended. Unbalanced voltage drop can cause hazardous overload and damage the strip.
- Please ensure that the power supply is of adapters power to operate the total load.
- When mounting on metallic or otherwise conductive surfaces, there needs to be an electrical isolation points between strip and the mounting surface.
- Pay attention to standard ESD precautions when installing the strip.
- Damaged by corrosion will not be honored as a materials defect claim. It is the user's responsibility to provide suitable protection against corrosive agents such as moisture and condensation and other harmful elements.
- Do not power more than 30m of this outdoor LED strip as a single run without a repeater or the brightness will decay. Max. 30m is recommended to be powered seperately.
- Caution needs to be taken while doing the connection after cutting the strip. Only authorized professionals can do the work to enable it waterproof in wet locations.

LED Supplies UK Ltd

Unit 5 Kennet Weir Business Park
Arrowhead Road
Theale
Berkshire
RG7 4AD
Tel: +44 (0) 118 903 3299