

# LED PANEL - 595 x 595

**5 Year Warranty - 40 Watt - 3200lm**

**DW5 series - 4000K Daylight White**



LED-SUPPLIES.COM offer a comprehensive range of LED Panels including the most popular 595 x 595mm 40W panel which comes with 5 Year Warranty.

We have sold thousands of LED panels used in both domestic and commercial applications including a LED panel wall in London's O2.

Our latest DW5 series of 595 x 595mm LED panel outputs 3200lm of light at a 4000K 'Daylight White' colour temperature which is widely regarded as the most agreeable rating for a wide range of applications. The DW5 series of panels can be retrofitted into existing suspended ceilings within minutes and are supplied complete with the long life Lifud solid state driver, or can be wall mounted using brackets, installed on suspension cables or surface mounted (see 3 optional mounting accessories below).

We also offer an optional emergency pack for our LED panel. These panels meet latest building regulations and feature edge-lit technology with a high grade PMMA diffuser.

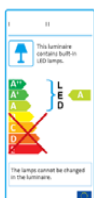
Our 40W LED panels are designed to replace the old 600mm fluorescent tube fittings which use 4 x 18W tubes (a total of 72 Watts) so our LED panels offer a 45% energy saving compared to the traditional ceiling fittings whilst giving a bright light output with no flicker, instant start up, no UV and is very long life to significantly reduce maintenance costs. The 40W panel we have developed provides a perfect balance of cost, brightness level, light colour and energy saving all with zero maintenance



## Features:

- \* 595 x 595 mm Designed for New & Retrofit Applications
- \* 5 Year Warranty with Long Life Solid State Lifud Driver
- \* 40W rated proving 3200 Lumen Output (80lm per Watt)
- \* Engineered to replace traditional 4 x 18W (72W fitting)
- \* Choice of 3 mounting options (see below)
- \* Suitable for Commercial or Domestic use
- \* 4000K (Daylight White) Colour Temperature
- \* Extremely Energy Efficient
- \* Installation in minutes
- \* Meet latest building regulations & Safety Approved
- \* No Flicker, No UV, Instant Start
- \* Ultra Slim 8mm profile

Optional Emergency Pack (EP1) - Call For Details



## Example Energy Saving for Typical Office Installation:

Comparison of our 40W LED panels & 72W (4 x 18W) T8 Fluorescent fittings

100 pcs 72W (4 x 18W) fittings = 7200 Watts  
Life expectancy 15,000 hrs Max.  
Monthly running costs £134.00

100 pcs 40W LED panel = 4000 Watts  
Life expectancy 50,000 hrs  
Monthly running costs £77.00

Figures based on 8 hrs use per day, 20 days per month at a rate of £0.12p kWh

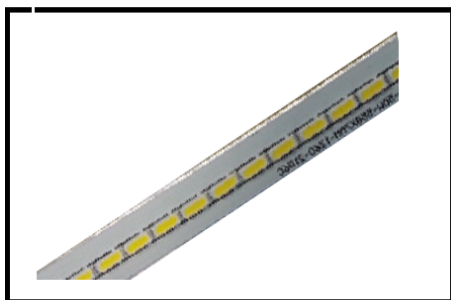
## Features



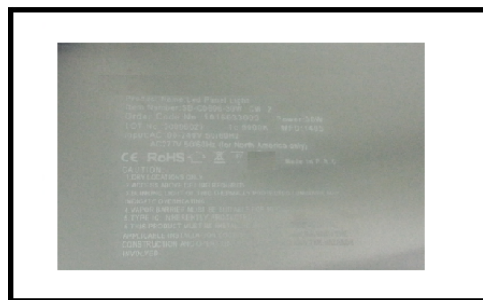
Replace old 72W (4 x 18W) fittings at 45% energy saving



White frame just 8mm deep with dimensions of 595 x 595mm perfect for commercial and domestic applications



Aluminium PCB for excellent reliability. High CRI 4014 SMD LEDs for super bright light output



Aluminium back plate for improved heat dissipation. Laser engraved label for batch trace and technical details



100% burn in age testing on all panels before they are shipped to ensure reliability

## Applications



Retailers & Supermarkets



Hotels & Restaurants



Commercial Buildings



Offices and Showrooms



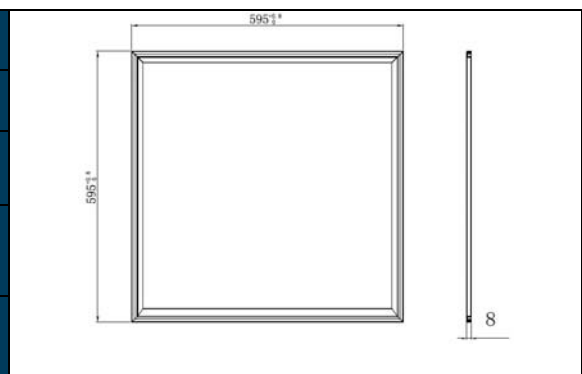
Schools & Colleges

## Model Summary

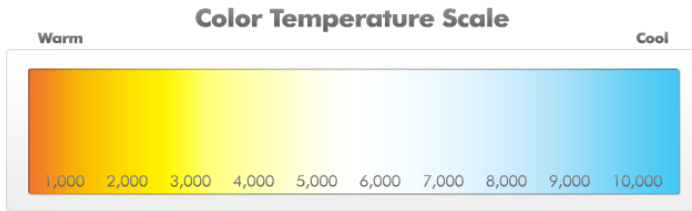
Model No.	Dimmable/ Non-dimmable	Colour	Power Supply	Warranty
LED-PANEL-6060-DW5	Non-Dimmable as standard	4000K Daylight	Lifud Solid State	5 Year

## Products Size and Weight

<b>Dimension(mm)</b>	595 x595x8 mm
<b>N.W.(kg)</b>	3.5 kg
<b>G.W.(kg)</b>	4.5 kg
<b>Lamp shell color</b>	White (customized)
<b>Dimmable or Non-dim</b>	Selectable



## Specifications

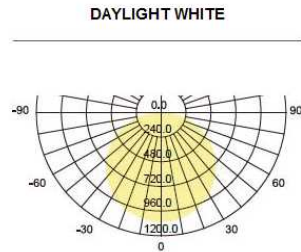


Our panels are designed to provide a light output colour of 4000K which we refer to as in the Daylight White spectrum. Perfect for both commercial and domestic applications. Other colour temperatures can be manufactured on request.

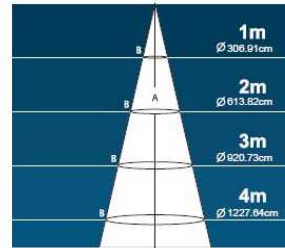
Model No.		Color (K)	Lumen Output (lm) $\pm 10\%$	Power (W) $\pm 10\%$	Voltage Input (v)	Voltage Output (v)	Current ( mA )	LED Type	Driver	PF	Angle	CRI (RA)	Life (Hours/Years)
LED-PANEL-6060-DW5		4000K	3200	40W	AC200-240V 50/60Hz	30-42V DC	950mA	4014	Factory	$\geq 0.9$	120°	$\geq 80$	$\geq 15,000H$ $\geq 3Y$

## Test Report

### AVERAGE BEAM ANGLE DIFFERENT DISTANCE LUMINAIRE



	A (LUX)	B (LUX)
1m	1,000.00	314.47
2m	250.00	78.62
3m	111.11	34.94
4m	62.50	19.65



A - Max value  
B - Average value

## Absolute Maximum Rating

Parameter	Rating	Units
Aluminum Heat Sink Temperature	50	°C
Operating Temperature	-20 - +40	°C
Storage Temperature	-20 - +40	°C

## Installation

These instructions should be read carefully and retained after installation for further reference and maintenance.

### SAFETY:

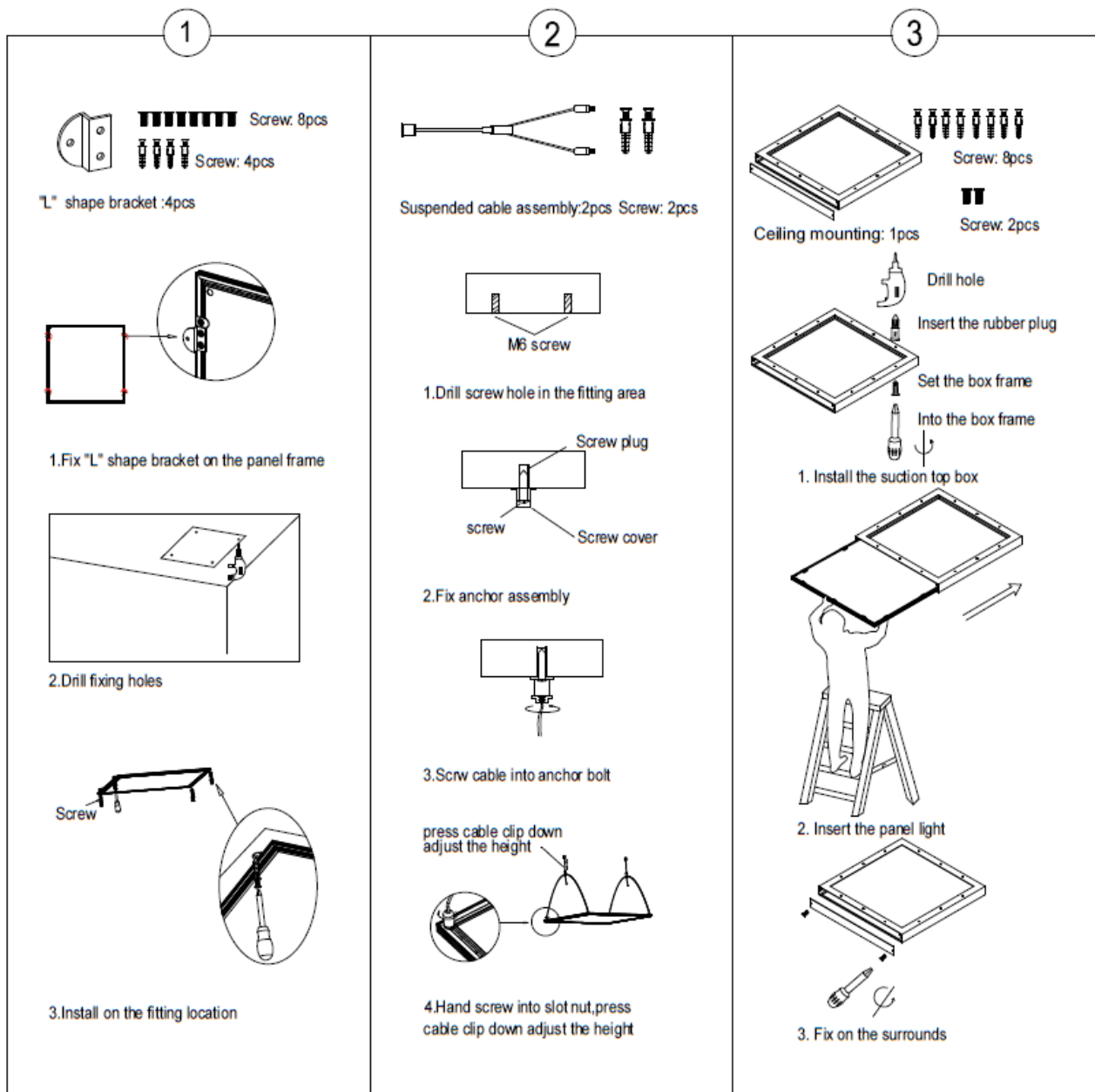
1. Please read the specification first, to make sure the service environment matches the condition in the specification before using.
2. Please confirm the applicable power supply before using.
3. Make sure the switch of product is off before connecting to the power supply to prevent electric shock.
4. Operation against rules of product is off before connect to the power supply to your personal safety.
5. Preliminarily estimate required quantity of LED lights, then according to the power rating of LED light to figure out the total power and design power supply plan.

6. Dangerous high voltage, Non-professionals are not allowed to maintain the products.

7. If the exterior flexible cable is damaged, it must exchange by the supplier, agent or other similar qualified personnel.

**WARNING :** Ensure the luminaire is switched off & suitably cooled down before carrying out any maintenance work.

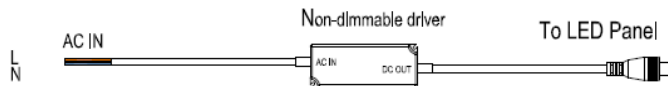
**Installation Diagram**



The above 3 mounting options are not included as standard. They need to be ordered as optional extra which can be found in the related products section on the LED panel product page on our web site

## Wiring Diagram

### Non-dimmable



Our DW5 series LED panels are supplied with a high quality Lifud LF-GIR040YL(B) driver, input AC200-240V, featuring long life solid state capacitors, 50,000 hours lifetime, 5 Year warranty, low THD, TUV, CE, SAA mark.

## LED Driver (Supplied with the LED Panel) Specification

	Min	Rated	Max	Units	Remark
Input Voltage	180	220/277	305	Vac	
Input Frequency	47	50/60	63	HZ	
Input Current	--	--	0.5	A	180Vac full load
Inrush Current (cold start)	--	--	60	A	230Vac full load

## Load Characteristics

Name	Min	Max	Units	Remark
Start-up Delay Time	--	0.5	S	220Vac full load
Input Line Regulation	--	5	%	40Vdc full load
	--	5	%	27Vdc Light load
Onput Line Regulation	--	5	%	220Vac Input
No-load power consumption	--	1	W	220Vac Input
Temperature Drift	--	<10	%	220Vac full load

## Parameter Table

Output Voltage range	Output Current range	Output Input Power	Input Voltage	Power factor	Efficiency	Harmonic Current	Output ripple voltage	Current accuracy
Units:Vdc	Units:mA	Units:W	Units:Vac	Units:%	Units:%	Units:%	Units:Vac	
27-40	1050	42W	180	0.96	87	15	4	+ -5%
			220	0.94	87	15	4	+ -5%
			277	0.88	86	15	4	+ -5%

## Protection Requirements

Protections	Specs	Remark
Output open circuit protection	Output voltage≤50Vdc	
Output short circuit protection	Short circuit output when the input power≤10W	Burp.Automatic Recovery

## Environment Requirements

Name	Min	Rated	Max	Units	Remark
Operating Temperature	-30	25	40	℃	
Operating Humidity	10	--	90	%RH	
Storage Temperature	-30	25	65	℃	
Pressure	86	--	106	KPa	

## Protection Requirements

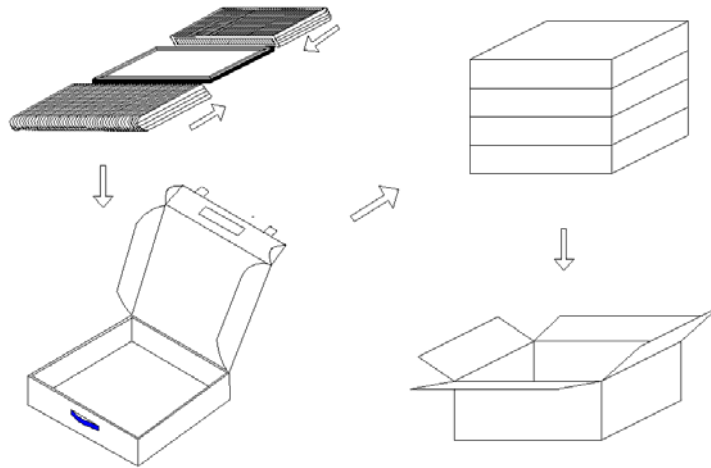
Category	Item	Reference index	Remark
Safety conformity	Hi-pot test	UL8750/IEC61347-1/IEC61347-2-13	The withstand of input-output is 4KV, leakage current≤5mA, the specific operation is according to GB7000.1
	Insulation resistance		The insulation impedance of Input-Output>100M@500Vdc
EMC conformity	EMI	EN55015/EN61000-3-3 PART15 standards	Surge level 1KV
	EMS	EN61547 standards	



## PACKING GUIDELINES

### Commercial Packaging

Quantity of inner carton(PCS)	1
Inner carton dimension (MM)	710(L)x640(W)x50(H)
Quantity of outer carton(PCS)	4
Outer carton dimension (MM)	720(L)x670(W)x220(H)
20 FT Dry Container (PCS)	780
40 FT Dry Container (PCS)	1,560



### Industrial Packaging

Quantity of outer carton(PCS)	4	
Carton dimension (MM)	710(L)x660(W)x205(H)	21 KG
20 FT Dry Container (PCS)	832	
40 FT Dry Container (PCS)	1,768	

