

TALEXdriver LC 17W 250–700mA flexC SC EXC

EXCITE series

New



With strain-relief

Product description

- _ Constant current LED Driver
- _ ready2mains compatible
- _ Dimming range 15 to 100 %
- _ Can be either used build-in or independent with clip-on strain-relief (see accessory)
- _ Output current adjustable between 250 – 700 mA
- _ Max. output power 17 W
- _ Up to 86 % efficiency
- _ Nominal life-time up to 100,000 h
- _ 5-year guarantee

Housing properties

- _ Casing: polycarbonate, white
- _ Type of protection IP20

Interfaces

- _ ready2mains (configuration and dimming via mains)
- _ Terminal blocks: 45° push terminals

Functions

- _ Adjustable output current in 1 mA steps (ready2mains, I-select 2)
- _ Configurable via ready2mains
- _ Protective features (overtemperature, short-circuit, overload, no-load, input voltage range)
- _ Suitable for emergency escape lighting systems acc. to EN 50172

Benefits

- _ Application-oriented operating window for maximum compatibility
- _ Best energy savings due to high efficiency
- _ Flexible configuration via ready2mains and I-select 2
- _ Reliability proven by life-time up to 100,000 h and 5-year guarantee

Typical applications

- _ For downlight, spotlight and decorative applications

Website

<http://www.tridonic.com/28000705>



Spotlights



Downlights



Linear



Area



Floor | Wall



Free-standing



Street



Decorative

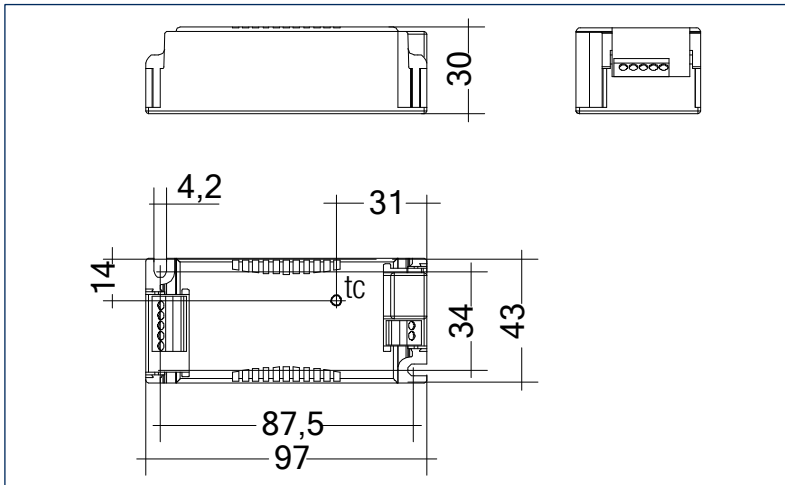


High bay

TALEXdriver LC 17W 250–700mA flexC SC EXC

EXCITE series

The complete data sheet for this product is available in the Downloads section.



Ordering data

Type	Article number	Packaging, carton	Packaging, pallet	Weight per pc.
LC 17W 250-700mA flexC SC EXC	28000705	10 pc(s).	1,400 pc(s).	0.093 kg

Technical data

Rated supply voltage	220 – 240 V
AC voltage range	198 – 264 V
DC voltage range	176 – 280 V
Mains frequency	0 / 50 / 60 Hz
Overtoltage protection	320 V AC, 48 h
Typ. rated current (at 230 V, 50 Hz, full load) ^{①②}	95 mA
Typ. current (220 V, 0 Hz, full load, 50 % dimming level) ^②	50 mA
Leakage current (at 230 V, 50 Hz, full load) ^{②③}	< 250 µA
Max. input power	20.4 W
Typ. efficiency (at 230 V, 50 Hz, full load) ^②	86 %
λ (at 230 V, 50 Hz, full load) ^③	0.95
Typ. input current in no-load operation	17 mA
Typ. input power in no-load operation	0.6 W
In-rush current (peak / duration)	20 A / 200 µs
THD (at 230 V, 50 Hz, full load) ^④	< 10 %
Time to light (at 230 V, 50 Hz, full load) ^④	< 500 ms
Time to light (DC mode)	< 500 ms
Switchover time (AC/DC)	< 0.2 s
Turn off time (at 230 V, 50 Hz, full load)	< 50 ms
Output current tolerance ^⑤	± 5 %
Max. output current peak (non-repetitive)	≤ output current + 35 %
Output LF current ripple (< 120 Hz)	< 5 %
Max. output voltage (no-load voltage)	60 V
Dimming range ^⑥	15 – 100 %
Suitable for burst / surge peaks up to (between L – N)	1 kV
Suitable for burst / surge peaks up to (between L/N – PE)	2 kV
Burst / surge peaks output side against PE	< 500 V
Dimensions L x W x H	97 x 43 x 30 mm

Approval marks

IP20 SELV       RoHS

Standards

EN 55015, EN 61000-3-2, EN 61000-3-3, EN 61347-1, EN 61347-2-13, EN 62384, EN 61547, Acc. to EN 50172, Acc. to EN 60598-2-22

Specific technical data

Type	Output current ^①	Min. forward voltage	Max. forward voltage	Max. output power	Typ. power consumption (at 230 V, 50 Hz, full load)	Typ. current consumption (at 230 V, 50 Hz, full load)	tc point max.	Ambient temperature ta	I-select 2 resistor value ^②
LC 17W 250-700mA flexC SC EXC	250 mA	15 V	50 V	12.5 W	15.7 W	73 mA	75 °C	-25 ... +60 °C	-
LC 17W 250-700mA flexC SC EXC	300 mA	15 V	50 V	15.0 W	18.3 W	85 mA	75 °C	-25 ... +60 °C	16.50 kΩ
LC 17W 250-700mA flexC SC EXC	350 mA	15 V	49 V	17.0 W	20.7 W	95 mA	75 °C	-25 ... +60 °C	14.30 kΩ
LC 17W 250-700mA flexC SC EXC	400 mA	15 V	43 V	17.0 W	20.8 W	95 mA	75 °C	-25 ... +60 °C	12.40 kΩ
LC 17W 250-700mA flexC SC EXC	450 mA	15 V	38 V	17.0 W	20.8 W	95 mA	75 °C	-25 ... +60 °C	11.00 kΩ
LC 17W 250-700mA flexC SC EXC	500 mA	15 V	34 V	17.0 W	20.7 W	95 mA	75 °C	-25 ... +60 °C	10.00 kΩ
LC 17W 250-700mA flexC SC EXC	550 mA	15 V	31 V	17.0 W	20.6 W	95 mA	75 °C	-25 ... +60 °C	9.09 kΩ
LC 17W 250-700mA flexC SC EXC	600 mA	15 V	28 V	17.0 W	20.5 W	95 mA	75 °C	-25 ... +60 °C	8.25 kΩ
LC 17W 250-700mA flexC SC EXC	650 mA	15 V	26 V	17.0 W	20.5 W	95 mA	75 °C	-25 ... +60 °C	7.68 kΩ
LC 17W 250-700mA flexC SC EXC	700 mA	15 V	24 V	17.0 W	20.4 W	95 mA	75 °C	-25 ... +60 °C	0.00 kΩ

① Valid at 100 % dimming level.

② Depending on the selected output current.

③ Depending on the connected load.

④ The table only lists a number of possible operating points but does not cover each single point. The output current can be set within the total value range in 1-mA-steps.

⑤ Not compatible with I-select (generation 1).