

# Modular Pole Display

Low cost freestanding display system for posters, brochures and banners

- Ideal for internal/temporary sheltered outdoor use
- Range of standard display options available



2-channel pole with Poster Frames (round corners) and steel Brochure Shelves



4-channel pole with Poster Frame (round corners) and side-mounted Brochure Holders



4-channel pole with Slide-In Frames and steel Brochure Shelf



2-channel pole with Slide-In Frames and Banner Set

# Standard Components for Modular Pole Display

## Pole & Base for Modular Pole Display

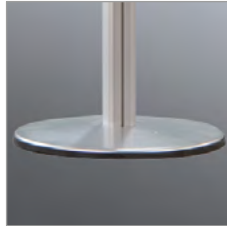
- 70 x 70mm silver anodised aluminium poles
- Silver powder coated steel bases



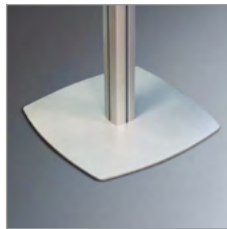
**In stock**



**Recyclable**  
Aluminium poles and steel bases



**2-channel pole** with circular base and domed end cap



**4-channel pole** with square base and pyramid end cap



Pole Type	Base Dimensions (mm)	O/A Height (mm)	Weight (kg) inc. base	Order Code
2-channel	450 (diameter) x 35	1920	12.4	BP2
4-channel	450 x 35 x 450			BP4

## Poster Frames for Modular Pole Display

- Front-opening aluminium snapframes for quick and easy poster change
- 30mm profile with choice of round or mitred corners
- Supplied with pre-fitted channel slider/clamps



**In stock**  
A2 and A1 with round corners



**Recyclable**  
Aluminium snapframes and PET poster covers



4-channel pole with A1 Poster Frame (round corners)

Corners	Poster Size	Weight (kg)	Availability	Order Code
Round	A2	1.7	In stock	BPFRAMEA2
	A1	2.8		BPFRAMEA1
	500 x 700mm	2	Made to order	UFSL012000
	700 x 1000mm	3.5		UFSL014000
Mitred	A2	1.7	Made to order	UFSL005000
	A1	2.8		UFSL004000
	500 x 700mm	2		UFSL006000
	700 x 1000mm	3.5		UFSL008000



2-channel pole with 4 × steel Brochure Shelves

## Brochure Shelves

for Modular Pole Display

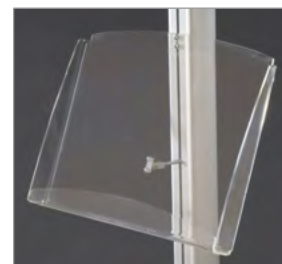
- 2 × A4 portrait/1 × A3 landscape angled shelves
- Available in silver powder coated **steel** or **clear acrylic**

 **In stock**  
Steel brochure shelves

 **Recyclable**  
Steel/acrylic shelves



Steel



Acrylic

Material	O/A Dimensions (w × h × d mm)	Weight (kg)	Availability	Order Code
Steel	460 × 310 × 40	1.8	In stock	BPSTEELSHELF
Acrylic		1.4	Made to order	UFSL003000




2-channel pole with 4 × A2 Slide-In Frames

## Slide-In Frames

for Modular Pole Display

- Silver anodised **aluminium frames** with open top end
- Clear **PET poster cover sheets**
- Black **polystyrene inner sheet** included to provide light block between posters

 **In stock**

 **Recyclable**  
Aluminium frame, PET poster cover sheets and polystyrene inner sheet



Poster Size	O/A Dimensions (w × h mm)	Weight (kg)	Order Code
A4 Portrait	233 × 320	0.83	BPSLIFA4
A3 Portrait	320 × 443	1.2	BPSLIFA3
A2 Portrait	443 × 617	1.82	BPSLIFA2

# Banner Set (Poster Hangers) for Modular Pole Display

- Supporting arm simply slides into pole and screws in place
- Aluminium 'Poster Hanger' rails top and bottom, suitable for paper or banners up to 1mm thick (see page 50 for details)



**In stock**



**Recyclable**  
Aluminium supporting arms and rails



Banner Height (mm)	Banner Width (mm)	Weight (kg)	Order Code
Up to 1700	400	0.28	BPBANARM400
	500	0.34	BPBANARM500
	600	0.41	BPBANARM600



2-channel pole with 2 x 600mm Banner Set

# Brochure Holders for Modular Pole Display

- Made with crystal clear high impact polystyrene (HIPS)
- Options for direct pole mounting or side mounting

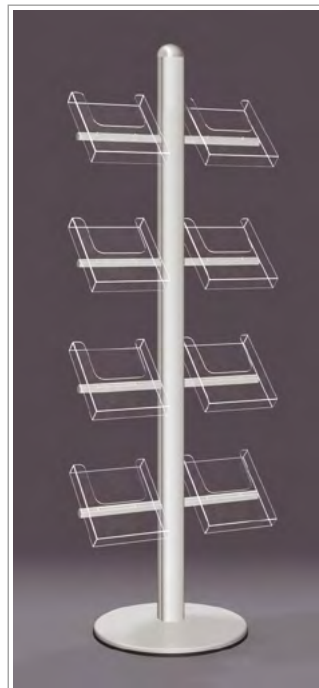


**In stock**  
A4 and A5 with side mounting arm

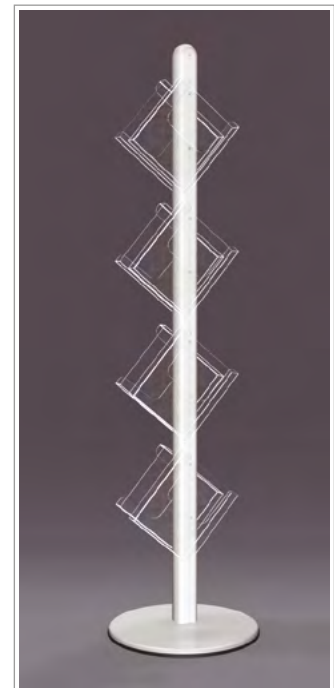


**Recyclable**  
High impact polystyrene (HIPS) brochure holders

Type	Size	Weight (kg)	Availability	Order Code
With side mounting arm	A4	0.85	In stock	BPSIDESHELFA4
	A5	0.55		BPSIDESHELFA5
		1/3 A4	0.35	Made to order
Angled for pole mounting	A4	0.45	Made to order	BPANGBHA4



Holders with side mounting arms



Angled pole mounted holders

