

# COUNTERBALANCED

## 4-wheel engine trucks torque converter



M315 - 318

1.5t - 1.8t  
 7470 mm  
 DIESEL / LPG

M320 - 325

2.0t - 2.5t  
 7470 mm  
 DIESEL / LPG

M330 - 335

3.0t - 3.5t  
 7470 mm  
 DIESEL / LPG

## 4-wheel engine trucks hydrostatic



Drago 150 - 200

1.5t - 2.0t  
 6170 mm  
 DIESEL / LPG

Drago H 250 - 300 - 350

2.5t - 3.0t - 3.5t  
 7960 mm  
 DIESEL / LPG

Drago E 250 - 300 - 350

2.5t - 3.0t - 3.5t  
 7960 mm  
 DIESEL / LPG



Drago 400 - 450 - 500

4.0t - 4.5t - 5.0t  
 6650 mm  
 DIESEL

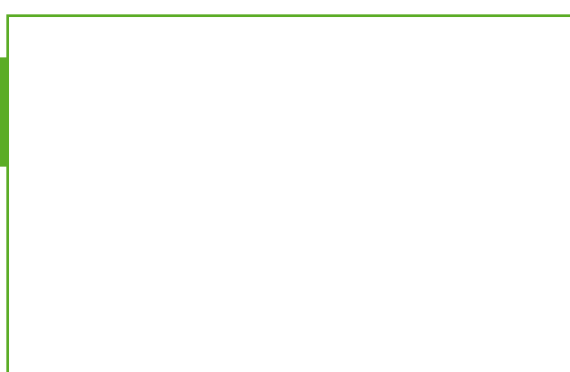
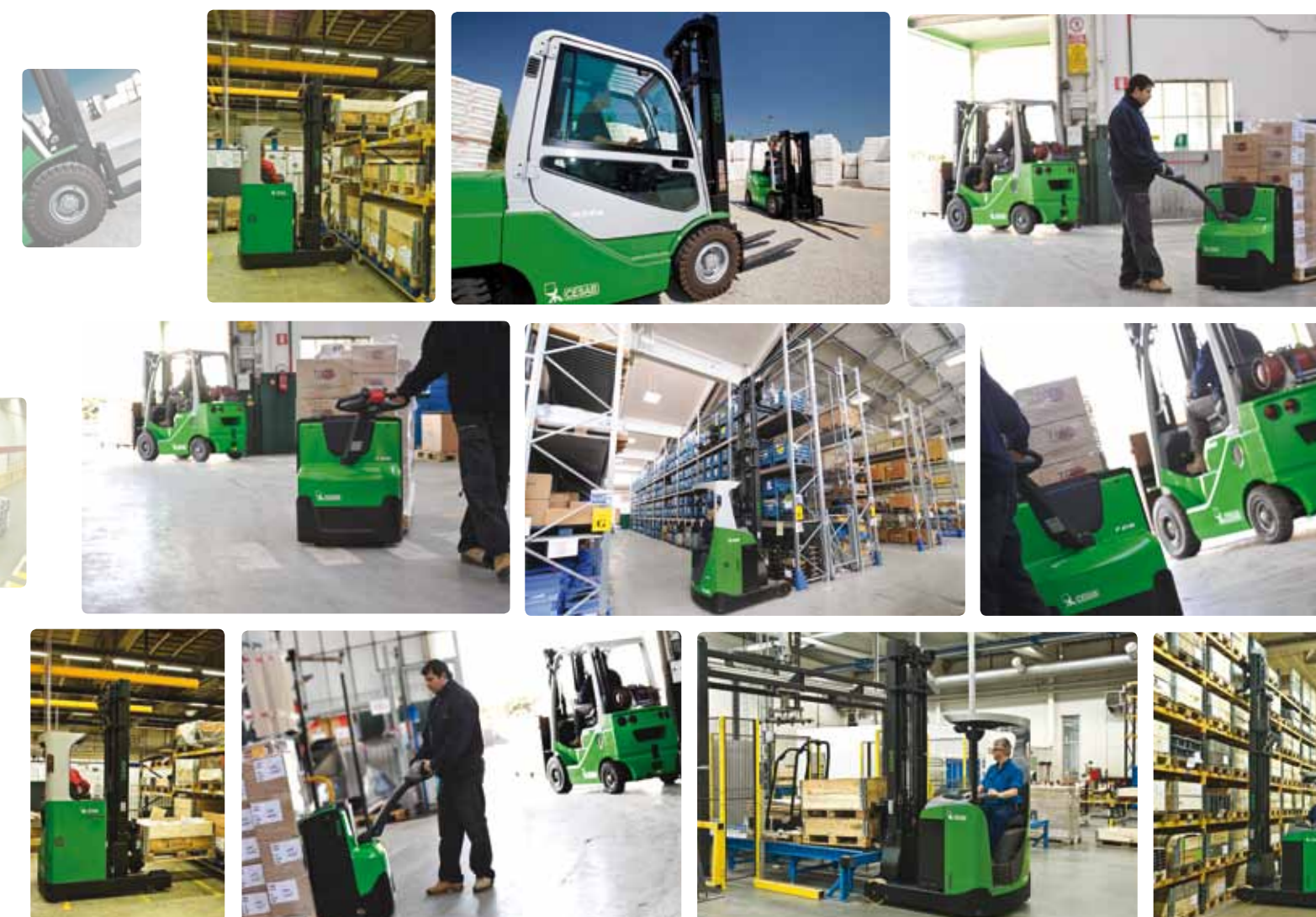
SID-P 60 - 70 - 80

6.0t - 7.0t - 8.0t  
 5530 mm  
 DIESEL

# CESAB PRODUCT RANGE

## Counterbalanced and Warehouse Equipment

© 2018. All rights reserved. Availability and specifications are determined subject to change without notice. Please contact your authorized CESAB distributor for further details. P&B 01/111.



# COUNTERBALANCED

## 3-wheel electric trucks



BIT 800 - 1000 - 1200

- Rated capacity: 0.8t - 1.0t - 1.2t
- Maximum lifting height: 5965 mm
- Maximum battery capacity: 24V / 800 Ah



B210 - 213 - 215

- Rated capacity: 1.0t - 1.25t - 1.5t
- Maximum lifting height: 6470 mm
- Maximum battery capacity: 24V / 1000 Ah



B315 - 316 - 316L - 318 - 318L - 320

- Rated capacity: 1.5t - 1.6t - 1.8t - 2.0t
- Maximum lifting height: 7470 mm
- Maximum battery capacity: 48V / 750 Ah

## 4-wheel electric trucks



B415 - 416 - 416L - 418 - 418L - 420

- Rated capacity: 1.5t - 1.6t - 1.8t - 2.0t
- Maximum lifting height: 7470 mm
- Maximum battery capacity: 48V / 750 Ah



Blitz 250 - 300 - 300L - 350

- Rated capacity: 2.5t - 3.0t - 3.5t
- Maximum lifting height: 7160 mm
- Maximum battery capacity: 80V / 775 Ah



Mak 400 - 450 - 500

- Rated capacity: 4.0t - 4.5t - 5.0t
- Maximum lifting height: 7450 mm
- Maximum battery capacity: 80V / 775 Ah

## Compact electric trucks



cenTAURO 48 160L - 200L

- Rated capacity: 1.6t - 2.0t
- Maximum lifting height: 6970 mm
- Maximum battery capacity: 48V / 840 Ah



cenTAURO 80 250 - 300

- Rated capacity: 2.5t - 3.0t
- Maximum lifting height: 6860 mm
- Maximum battery capacity: 80V / 735 Ah

## Heavy duty electric truck



B860 - 870 - 885

- Rated capacity: 6.0t - 7.0t - 8.5t
- Maximum lifting height: 6450 mm
- Maximum battery capacity: 80V / 1050 Ah

# WAREHOUSE EQUIPMENT

## Hand pallet trucks



CE200 - 230 - 300

- Rated capacity: 2.0t - 2.3t - 3.0t
- The 2.3t model is also available with low forks, quicklift feature and handbrake. Low forks are standard on the 2.0t model.



CE200ST

- Rated capacity: 2.0t
- Stainless steel version



CE100HL - 100HLE

- Rated capacity: 1.0t
- Maximum lifting height: 810 mm
- Manual and electric scissor lifters.

## Powered pallet trucks



P113

- Rated capacity: 1.3t
- Maximum battery capacity: 24V / 63 Ah



P214 - 216 - 218 - 220 - 225

- Rated capacity: 1.4t - 1.6t - 1.8t - 2.0t - 2.5t
- Maximum battery capacity: 24V / 150 - 300 Ah
- Optional operator platform available for P220.



P320 - 324

- Rated capacity: 2.0t - 2.4t
- Maximum battery capacity: 24V / 300 - 620 Ah
- The P320 is also available as a high performance version (8.5 km/h). The P324 is also available with power steering.

## Reach trucks



R212 - 214 - 216

- Rated capacity: 1.2t - 1.4t - 1.6t
- Maximum lifting height: 6000 mm - 6300 mm - 8500 mm
- Maximum battery capacity: 48V / 620 Ah

Also available as a cold store version as well as drive-in version with narrow overhead guard.



R314 - R316 - R318 - R320 - R325

- Rated capacity: 1.4t - 1.6t - 1.8t - 2.0t - 2.5t
- Maximum lifting height: 9000 mm - 10500 mm - 11000 mm - 12500 mm
- Maximum battery capacity: 48V / 620 - 930 Ah

Also available as a cold store version, with or without heated cabin, as well as a drive-in version with narrow overhead guard.



Trac E 50

- Rated capacity: 5.0t
- Maximum draw-bar pull: 1000 N
- Maximum battery capacity: 40V / 275 Ah

## Powered stacker trucks



S110 - 110S

- Rated capacity: 1.0t
- Maximum lifting height: 1960 mm - 2000 mm
- Maximum battery capacity: 24V / 63 Ah
- Manual and electric straddle support arm version.



S208L

- Rated capacity: 0.8t
- Maximum lifting height: 1580 mm
- Maximum battery capacity: 24V / 230 Ah
- Can lift up to 2000 kg when lifting with the support arms only. Available with optional automatic height adjustment.



S210 - 212 - 214

- Rated capacity: 1.0t - 1.2t - 1.4t
- Maximum lifting height: 3300 mm - 4500 mm - 4755 mm
- Maximum battery capacity: 24V / 225 - 300 Ah
- Optional operator platform available.



S212S

- Rated capacity: 1.2t
- Maximum lifting height: 4755 mm
- Maximum battery capacity: 24V / 300 Ah
- Straddle support arms. Optional operator platform also available.



S212L - 214L

- Rated capacity: 1.2t - 1.4t
- Maximum lifting height: 4500 mm - 4755 mm
- Maximum battery capacity: 24V / 300 Ah
- Elevating support arms. Optional operator platform available (see image above).



S220D

- Rated capacity: 1.0t
- Maximum lifting height: 2100 mm
- Maximum battery capacity: 24V / 300 Ah
- Double stacker, lifts 800 + 1200 kg lifting with forks + support arms or 2000 kg when lifting with the support arms only. Optional operator platform available.



S313 - 316 - 320

- Rated capacity: 1.25t - 1.6t - 2.0t
- Maximum lifting height: 3950 mm - 5400 mm
- Maximum battery capacity: 24V / 425 Ah
- Also available as a walkie version (without platform and longer tiller arm).



S313L - 316L - 320L

- Rated capacity: 1.25t - 1.6t - 2.0t
- Maximum lifting height: 3950 mm - 5400 mm
- Maximum battery capacity: 24V / 425 Ah
- Elevating support arms. Also available as a walkie version (without platform and longer tiller arm).



S314S

- Rated capacity: 1.35t
- Maximum lifting height: 5400 mm
- Maximum battery capacity: 24V / 425 Ah
- Adjustable straddle support arms. Also available as a walkie version. (Without platform and longer tiller arm.)

### Legend

Rated capacity	Additional info
Maximum lifting height	Fuel type
Maximum battery capacity	Nominal draw-bar pull