



---

*making the lifting industry a safer place*

**straightpoint product catalogue**

Part No:  
SU3451



# company profile



Since 1976 Straightpoint's world-class, solution-based systems have been at the forefront of industrial weighing and load monitoring technology. With UK headquarters, a US subsidiary, and global dealer network, the simple to use, cost-effective product range has enhanced safety for engineers and rigging professionals worldwide for nearly 40 years. The engineering team design and manufacture a broad spectrum of first-class products to capacities in excess of 1,500 tonnes to include:

- Tension 'Link' load cells
- Telemetry load cells
- Shackle load cells
- Dynamometers
- Crane scales
- Compression load cells
- Load pins
- Data logging software

At Straightpoint we pride ourselves on the development and distribution of world-class load monitoring, solution-based systems. Their wired and wireless Windows-based software, and full line of accessories allow for the simple and easy, acquisition and analysis of force and load monitoring data.

All their products are fully tested and available for next day dispatch in an aluminium flight case (or wooden crate for large capacities) with full documentation including manuals, certificates of calibration/proof test and CE conformity. World-class calibration and repair services are offered for all models as well as other manufacturers' load cells.

Straightpoint products are utilised within many industries worldwide:

- Shipping and marine
- Mining
- Transport
- Health and safety
- Entertainment
- Crane and rigging
- Oil and gas
- Construction
- Power generation
- Utilities
- Topsides

Straightpoint's highly qualified team of product specialists is available to assist with any application, and its global network of first-class distributors ensure that wherever your location, an approved Straightpoint dealer is close by.

Straightpoint's continued investment in research and development enables them to remain at the forefront of technological development with world-leading products and performance to meet their customers' demands.

With hundreds of units always in stock, they aim to deliver any standard product up to capacities in excess of 1,500 tonnes anywhere in the world—FAST!



# contents

All products within this catalogue include proof testing, calibration certificates and full calibration to British National Standards.

All products are supplied with a carry case or crate, batteries, multilingual user manual and certificate of calibration/proof test.



Page No.	Description
02-03	Radiolink Plus
04-05	Wireless Loadshackle
06-07	Wireless Compression Load Cell
08-09	Wireless Centre of Gravity System/SW-MWLC
10-11	Wireless Accessories
12-13	Loadlink Plus
14-15	Wirelink Plus
16-17	Loadshackle
18-19	Low Headroom Link
20-21	Compression Load Cell
22-23	Load Pin
24-25	'S' Beam Load Cell
26-27	Loadblock Plus
28-29	Miniweigher Plus
30-31	Jumboweigher
32-33	Wireless and Cabled HHP/Accreditations and affiliations

## Accreditations and affiliations

Straightpoint is an ISO9001:2008 approved company (registration number FM 584438) audited by the British Standards Institute (BSI) who are a notified UKAS body. We are members of key associations such as LEEA (Lifting Equipment Engineers Association), AWRF (American Wire Rope Fabricators) and SC&RA (Specialised Carriers & Rigging Association). Several key personnel are members of ASME (American Society of Mechanical Engineers). More information can be found on page 33.

## Payment Methods

We accept EURO and US DOLLARS - invoiced at time of price list or quotation; subject to change.

Payments can be made with the cards listed, BACS or cheque.



## Straightpoint (UK) Ltd

Unit 9, Dakota Park, Downley Road  
 Havant, Hampshire, PO9 2NJ UK  
 Tel: 02392 484491  
 Fax: 02392 472211  
 straightpoint.com · sales@straightpoint.com

## Straightpoint, Inc.

1221 Avenida Acaso, Suite E  
 Camarillo, CA 93012, USA  
 Tel: (844) 806-7665 · Office (805) 246-1462  
 Fax: (805) 262-6445  
 straightpoint.com · sales@straightpoint.com



Unit 9, Dakota Park, Downley Road, Havant, Hampshire PO9 2NJ · UK  
 Tel: +44(0)2392 484491 · Fax: +44(0)2392 472211  
 www.straightpoint.com · sales@straightpoint.com



# radiolink plus



Capable of both weighing and dynamic load monitoring the latest Radiolink Plus is constructed of high-quality aircraft grade aluminium and features an advanced internal design structure. This internal design structure not only provides the product with an unrivalled strength to weight ratio but also allows the use of a separate internal sealed enclosure providing the load cell's electronic components with IP67 environmental protection even with the battery cover plate missing, making this industry leading dynamometer even more suitable for use in the harshest environments.

Featuring industry leading wireless technology and range, the versatile Radiolink Plus is supplied with an update rate of 3 Hz and can be easily configured to run at industry leading speeds of up to 200 Hz. Data is transmitted wirelessly utilising the latest in IEEE 802.15.4 (2.4 GHz) technology providing safe, high integrity, error free transmission of both static weight and dynamic load to a wireless handheld controller.

Designed for measurement of both static and dynamic loads the Radiolink Plus can also be used in combination with our range of high speed wireless data logging software allowing for simultaneous control, display and real time data logging of up to 100 Straightpoint telemetry load cells. A.csv file format is used for data logging and opens in MS Excel, allowing easy visual presentation of the logged data and simple test certificate generation.

The Radiolink Plus utilises easily sourced AA alkaline batteries and features advanced circuitry designed to protect the unit from damage associated with incorrectly installed batteries. This advanced circuitry extends battery life and the use of easily sourced alkaline batteries eliminates issues associated with rechargeable battery pack charging, failure and replacement.

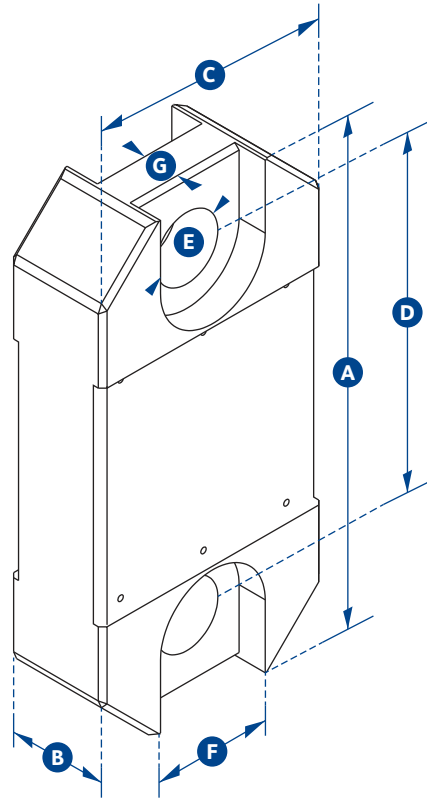
A full array of wireless accessories are also available including signal boosters, LED wireless scoreboards and base stations with analogue (4-20mA, 0-10v, 0-5v) or digital (RS232/485, Modbus RTU, and ASCII serial communications protocol) outputs. It is easy to see why, globally, the Radiolink Plus is the number one choice for weighing and dynamic load monitoring in critical lift planning and execution.

**From mid-2015 this product will be available ATEX/IECEX approved to Ex ia II C T4 Ga for use in zone 0 hazardous environments (gas).**

## Features and benefits:

- Proprietary 2.4 GHz wireless
- Industry leading wireless range
- Error free data transmission
- Unrivalled resolution
- Environmentally sealed
- Audible overload alarm
- Unmatched battery life
- Internal antennae
- Compact size
- Remote on-off
- Lightweight
- Peak hold
- Advanced options available
- Tare

## metric specifications



# radiolink plus

Part Number	RLP1T	RLP2T5	RLP5T	RLP12T	RLP25T	RLP35T	RLP50T	RLP75T	RLP100T	RLP150T	RLP200T	RLP250T	RLP300T
Capacity	1,000kg	2.5te	5te	12te	25te	35te	50te	75te	100te	150te	200te	250te	300te
Resolution	0.5kg	0.001te	0.001te	0.002te	0.005te	0.005te	0.01te	0.01te	0.05te	0.05te	0.1te	0.1te	0.1te
Units	kg	te	te	te	te	te	te	te	te	te	te	te	te
Weight	1.4kg	1.4kg	2kg	3.2kg	5kg	8.6kg	11.5kg	16kg	34kg	46kg	72kg	72kg	118kg
Safety Factor	12:1	5:1	5:1	5:1	5:1	5:1	5:1	5:1	5:1	4:1	5:1	4:1	5:1
Battery Type	Handheld 2 x AA/Load cell 4 x AA												
Battery Life	Handheld 400 hours/Load cell 1200 hours continuous												
Display Type	6 digit 25mm LCD												
Operating Temp	-10°C to +50°C												
Accuracy	± 0.3 % of applied load												
Frequency	2.4 GHz												
System Range	250 metres												
Data Rate	3 Hz - up to 200 Hz can be ordered for dynamic load monitoring applications												
Protection	IP67												
Dimension A	204	204	249	305	340	393	424	470	608	670	700	700	806
Dimension B	43	43	43	47	60	75	75	75	99	99	144	144	150
Dimension C	101	101	101	101	115	126	163	202	255	303	320	320	426
Dimension D	146	146	165	193	215	225	230	260	320	360	350	350	350
Dimension E	24.5	24.5	38	47.5	55	60	76	76	109	109	132	132	160
Dimension F	48	48	66	Not available on this capacity									
Dimension G	19	19	32	Not available on this capacity									
Crosby Shackle	G2130						G2140						
Loading Pin Ø	19	19	25	35	51	57	57	70	83	95	121	127	152

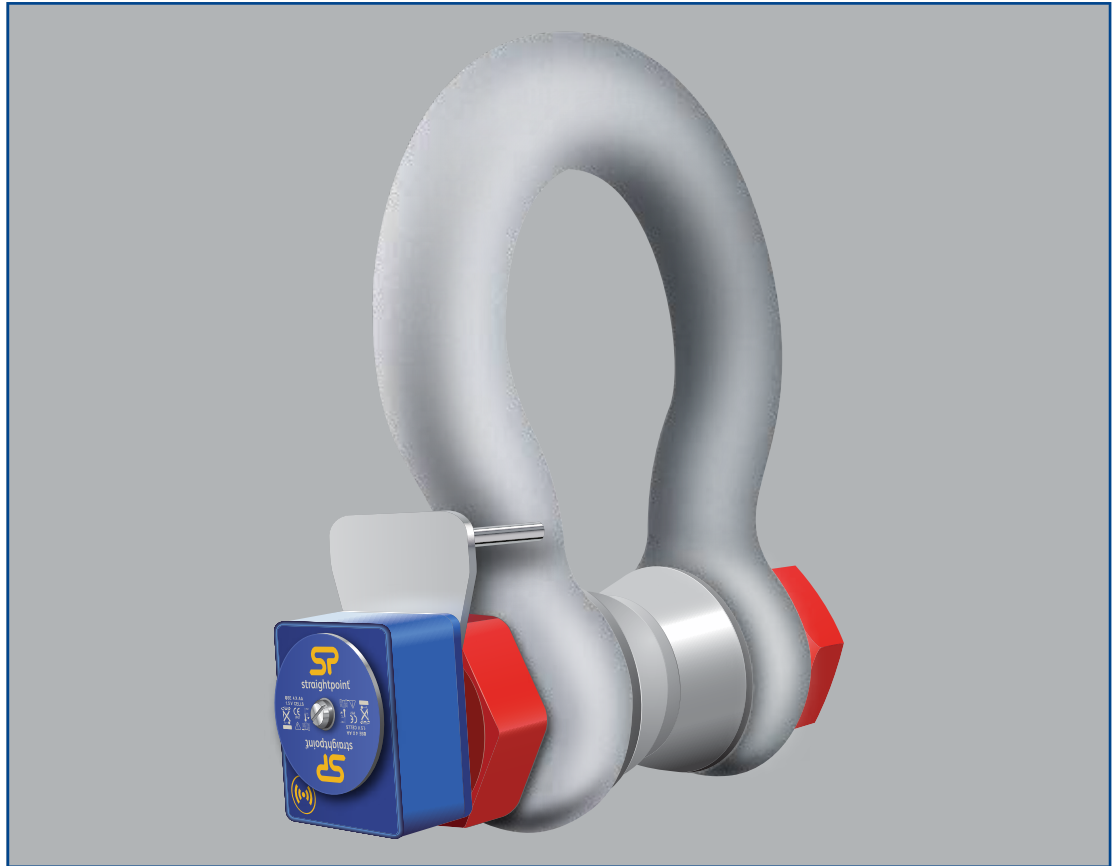
 To order the ATEX product add the suffix 'ATEX' to the Radiolink Plus part number



Unit 9, Dakota Park, Downley Road, Havant, Hampshire PO9 2NJ · UK  
 Tel: +44(0)2392 484491 · Fax: +44(0)2392 472211  
 www.straightpoint.com · sales@straightpoint.com



# wireless loadshackle



Available from stock in capacities 3.25t to 120t and available up to 1,550t, the WLS is manufactured from Crosby's industry leading 2130 Carbon and 2140 Alloy Bolt Type Anchor Shackles (3.25te – 120te) and the GN H10 Alloy Bolt Type Anchor Shackle (120te on up).

Straightpoint's Wireless Loadshackle provides the perfect solution to limited headroom applications. Each Wireless Loadshackle is proof tested, then equipped with a hard anodised aluminium electronics enclosure. Contained within this aluminium enclosure is a new internal chassis providing IP67/NEMA6 environmental protection even with the battery cover plate missing.

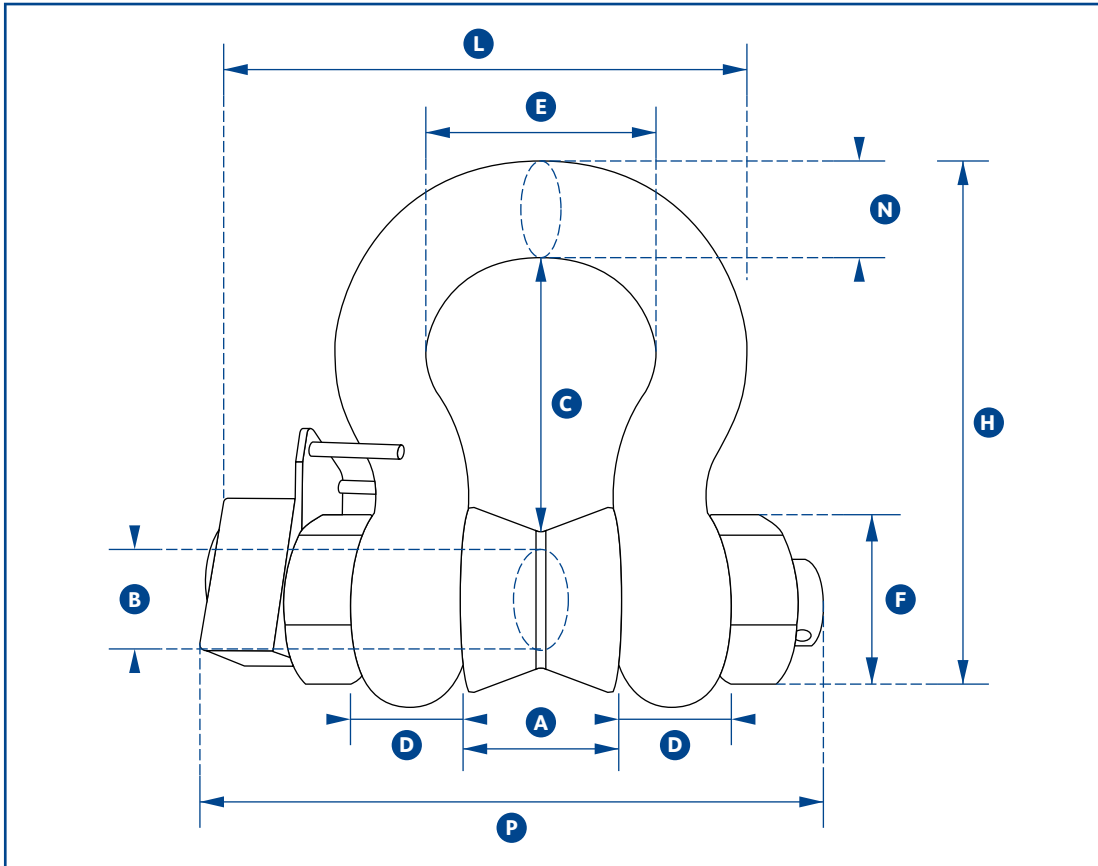
Featuring industry leading wireless technology and range, the Wireless Loadshackle is supplied with an update rate of 3Hz and can be easily configured to run at industry leading speeds of up to 200Hz. Data is transmitted wirelessly utilising the latest in IEEE 802.15.4 (2.4 GHz) technology providing safe, high integrity, error free transmission of both static weight and dynamic load to a wireless handheld controller or wireless Windows PC data logging software package. Our wireless data logging software allows for simultaneous control, display and real time data logging of up to 100 Straightpoint telemetry load cells. Logged data is captured in a .csv file format and opens in MS Excel providing easy visual presentation, analysis of logged data, and simple test certificate generation.

Our Wireless Loadshackle utilises easily sourced AA alkaline batteries and features advanced circuitry designed to protect the unit from damage associated with incorrectly installed batteries. This advanced circuitry extends battery life and the use of easily sourced alkaline batteries eliminates issues associated with rechargeable battery pack charging, failure and replacement. Our huge range of tooling allows us to calibrate in shackle for extra accuracy unlike many other load cell manufacturers. A full array of wireless accessories are also available including signal boosters, LED wireless scoreboards and base stations with analogue (4-20mA, 0-10v, 0-5v) or digital (RS232/485, Modbus RTU, and ASCII serial communications protocol) outputs. There is no better choice than Straightpoint's Wireless Loadshackle for limited headroom applications.

## Features and benefits:

- Proprietary 2.4 GHz wireless
- Error free data transmission
- Environmentally sealed
- Internal antennae
- Remote on/off
- Industry leading wireless range
- Unrivalled resolution
- Unmatched battery life
- Low headroom
- Lightweight
- Each WLS is supplied with a load-centring bobbin

## metric specifications



# wireless loadshackle

Part Number	WLS3.25T	WLS6.5T	WLS12T	WLS25T	WLS55T	WLS85T	WLS120T	WLS200T	WLS300T	WLS400T
Capacity	3.25te	6.5te	12te	25te	55te	85te	120te	200te	300te	400te
Resolution	0.005te	0.005te	0.01te	0.02te	0.05te	0.05te	0.1te	0.2te	0.5te	0.5te
Units	tonne									
Weight	2.8kg	3.2kg	8kg	18kg	25kg	45kg	85kg	215kg	364kg	520kg
Safety Factor	300% of rated load									
Battery Type	Load cell 4 x AA Alkaline									
Battery Life	Load cell 1,200 hours continuous									
Operating Temp	-10°C to +50°C									
Accuracy	±1% of applied load									
Frequency	2.4 GHz									
System Range	250 metres									
Data Rate	3 updates per second									
Protection	IP67									
Dimension A	26.9	36.6	51.5	73	82.5	105	127	184	213	210
Dimension B	19.1	25.4	35.1	51	57	70	82.5	121	152	178
Dimension C	60.5	84	119	178	197	267	330	397	495	572
Dimension D	16	22.4	31.8	44.5	51	66.5	76	95.5	121	165
Dimension E	42.9	58	82.5	127	164	184	200	279	330	330
Dimension F	38.1	53	76	106	122	145	165	267	305	356
Dimension H	106	148	210	313	348	453	546	743	895	1022
Dimension L	132	158	196	281	306	368	408	578	680	705
Dimension N	17.5	24.6	35.1	57	61	79	92	152	172	184
Dimension P	148	180	218	293	317	394	441	537	634	726

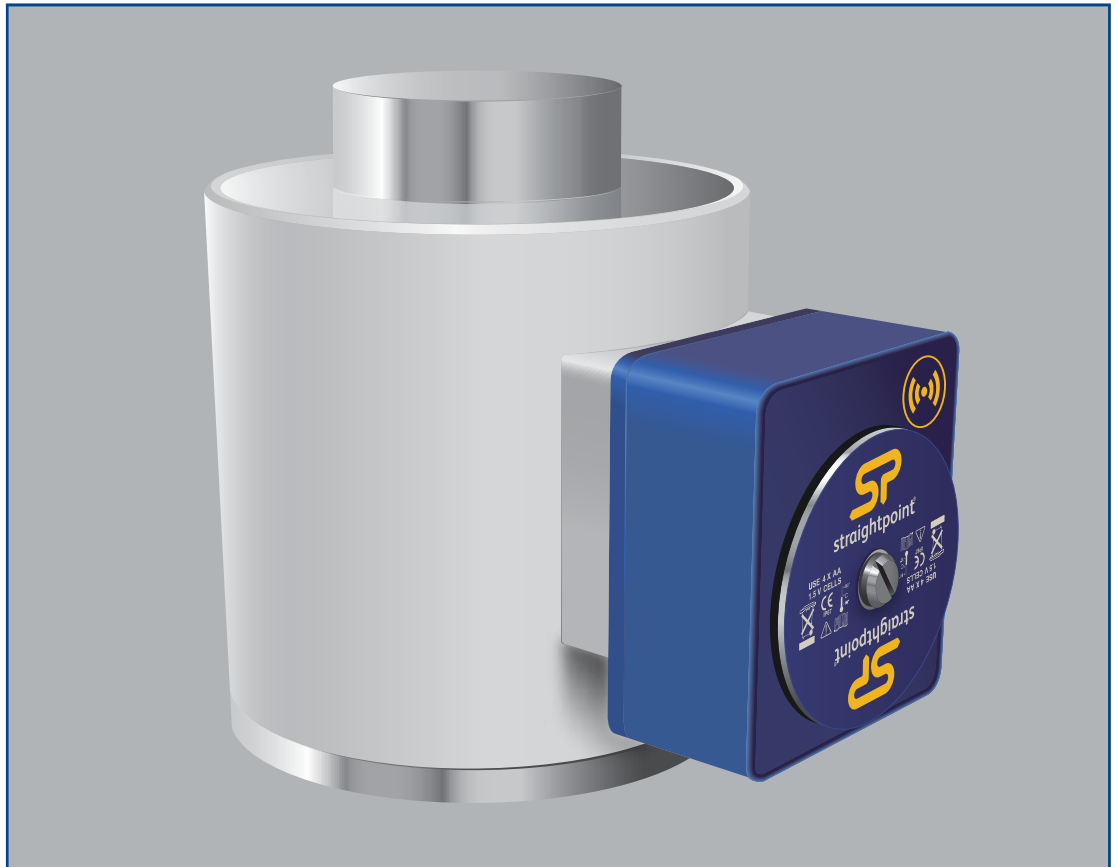
Larger capacities up to 1000te (price on application).



Unit 9, Dakota Park, Downley Road, Havant, Hampshire PO9 2NJ · UK  
 Tel: +44(0)2392 484491 · Fax: +44(0)2392 472211  
[www.straightpoint.com](http://www.straightpoint.com) · [sales@straightpoint.com](mailto:sales@straightpoint.com)



# wireless compression load cell



Taking the heavy lift and structural weighing industry by storm is the Straightpoint Wireless Compression Load Cell. By adding the Straightpoint wireless system to the already popular compression load cell line we have developed a cost-effective alternative to standard compression load cells.

No longer hindered by troublesome and hard to maintain cables, large scale projects can be completed in a fraction of time previously required. Maintenance costs are all but eliminated due to the absence of cables and connectors, and the product's flexibility opens the door to a large number of applications in the mining, energy, defence, heavy rigging, shipping, and general transportation sectors, previously not considered.

Straightpoint's Wireless Compression Load Cells are machined from high grade stainless steel, providing excellent strength and corrosion resistance. The heavy duty, compact load cell utilises Straightpoint's advanced microprocessor based electronics and benefits from unrivalled resolution and accuracy. Data transmission is handled by the Straightpoint wireless system's proprietary transport protocol and is unmatched in performance, capable of a license free transmission range of up to 250 metres.

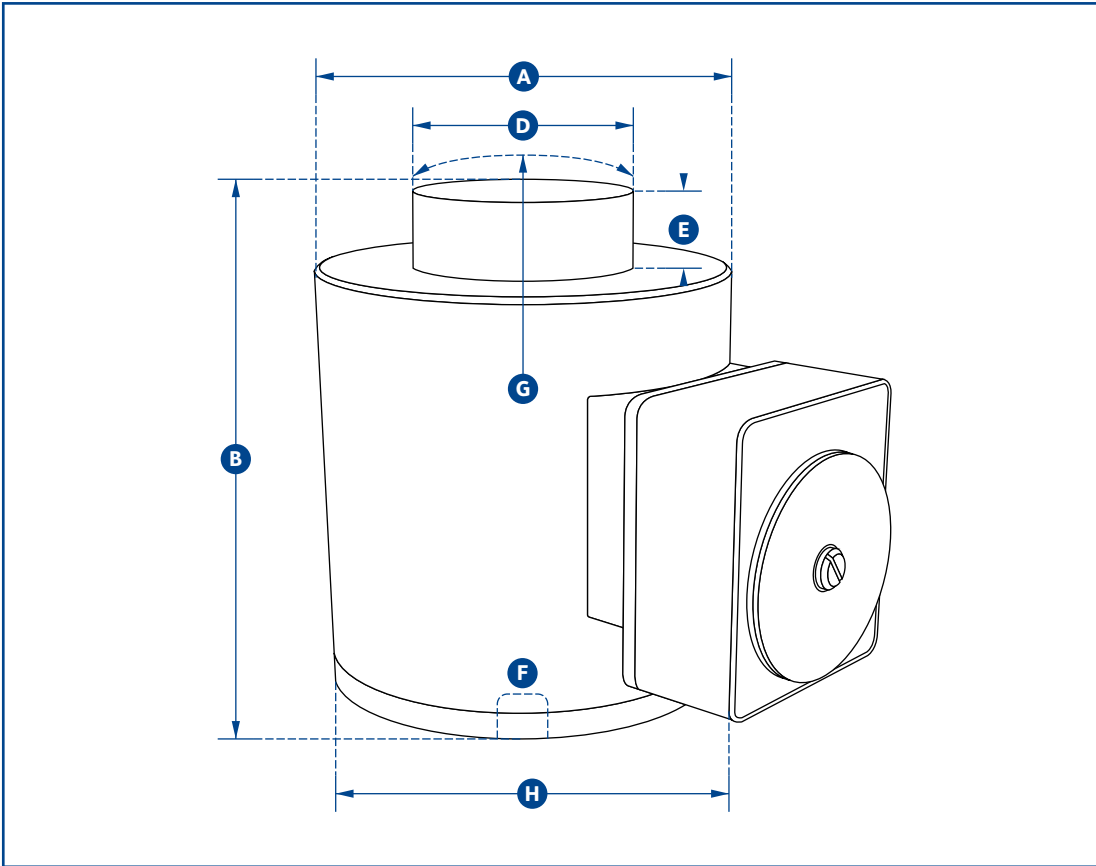
It is not until you add the powerful array of wireless accessories that the full potential of this product is realised. These accessories which include a wireless signal booster and several user friendly windows based software packages, provide a level of flexibility not previously known in the load monitoring industry. The system's creative software solutions allow for the calculation of centre of gravity, the ability to data log and print reports, and allow the simultaneous display and monitoring of up to 24 wireless load cells on a single PC screen.

## Features and benefits:

- Proprietary 2.4 GHz wireless
- Industry leading wireless range
- Error free data transmission
- Internal antennae
- Advanced options available
- No cable assemblies
- Unrivalled resolution
- Audible overload alarm
- Unmatched battery life
- Reduced maintenance cost
- Compact size
- Remote on-off



## metric specifications



# wireless compression load cell

Part Number	WNI50TC	WNI100TC	WNI150TC	WNI300TC	WNI500TC
Capacity	50te	100te	150te	300te	500te
Resolution	0.02te	0.1te	0.1te	0.1te	0.5te
Units	tonne				
Weight	6.2kg	15.5kg	15.5kg	65kg	65kg
Safety Factor	3:1				
Battery Type	Load cell 4 x AA Alkaline				
Battery Life	Load cell 1,200 hours continuous				
Operating Temp	-10°C to +50°C				
Accuracy	± 0.3% of applied load				
Frequency	2.4 GHz				
System Range	250 metres				
Data Rate	3 Hz (configurable to 200 Hz)				
Protection	IP67				
Dimension A	102	152	152	185	185
Dimension B	127	184	184	300	300
Dimension D	59	80	80	155	155
Dimension E	13	26	26	27.5	27.5
Dimension F	M20 x 2.5	M20 x 2.5	M20 x 2.5	M20 x 2.5	M20 x 2.5
Dimension G	152	432	432	432	432
Dimension H	158	208	208	241	241

Capacities from 500t - 2,000t (price on application).



Unit 9, Dakota Park, Downley Road, Havant, Hampshire PO9 2NJ · UK  
 Tel: +44(0)2392 484491 · Fax: +44(0)2392 472211  
[www.straightpoint.com](http://www.straightpoint.com) · [sales@straightpoint.com](mailto:sales@straightpoint.com)



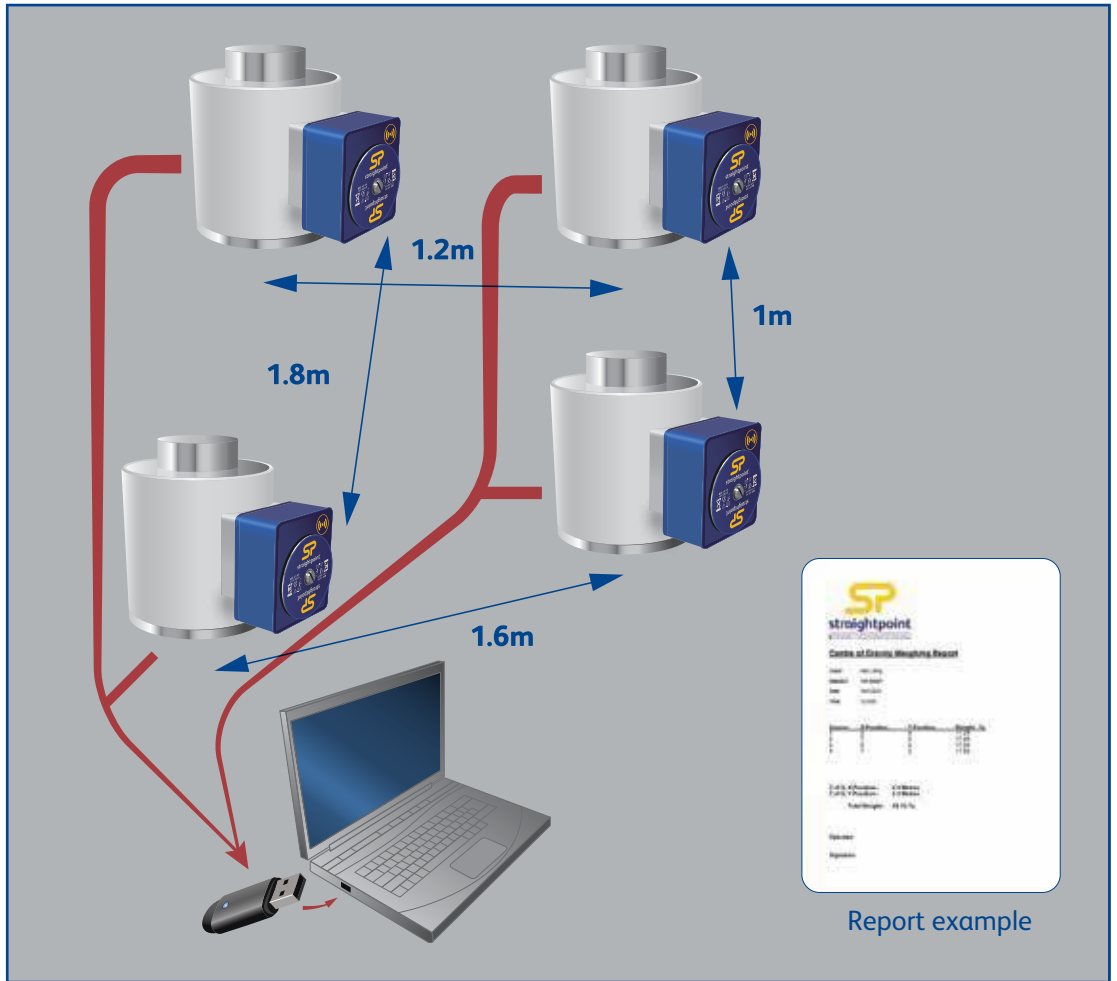
# wireless centre of gravity system



Once number of load cells have been decided, the software must be ordered  
Part No. **WCOGS**

For load cell specifications please refer to  
Page No. **07**

**2-YEAR**  
**SP**  
**WARRANTY**



Straightpoint's Wireless Centre of Gravity System is the first of its kind and designed specifically for use in the lifting/rigging and transportation/logistics industries. Our Wireless Centre of Gravity System uses telemetry compression load cells and a simple to use but powerful software package, to measure individual load cell loads in real-time and print/save a full centre of gravity analysis report.

Global Specifications	
IP rating (SW-USBBSE)	IP65 or NEMA 4X
Operating Temperature	-10°C to +50°C or 14°F to 122°F
Licence	Licence free
Frequency	2.4 GHz
Range	250 metres or 800 feet
Load Cell Inputs	Up to 8
PC Requirements	Intel i3 processor with 2GB RAM
Operating System	Windows XP, Vista, Windows 7 or Windows 8 (must have English language regional settings selected)

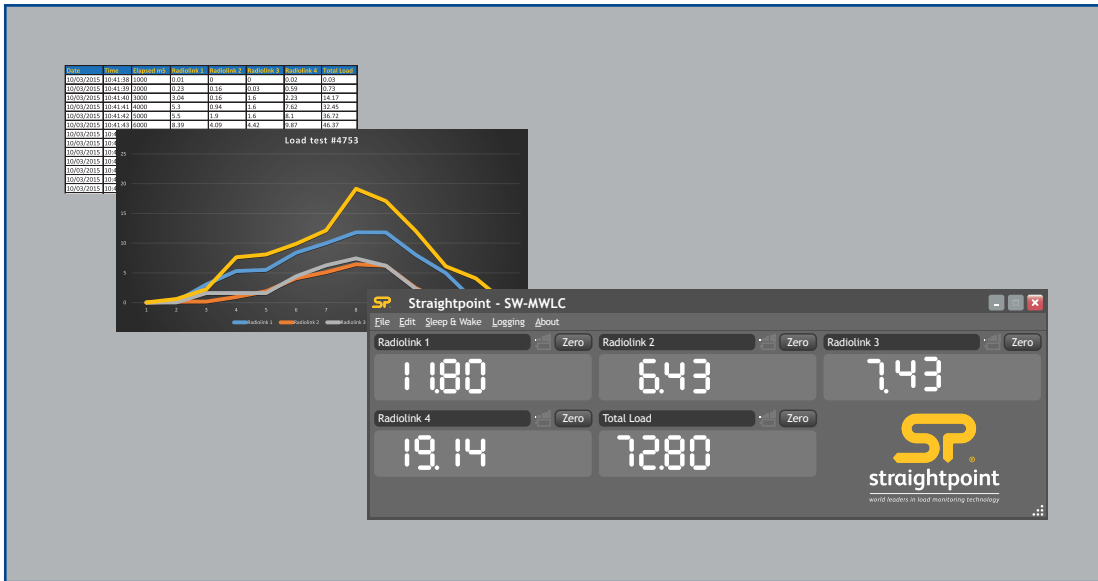
## WCOGS

### Wireless Centre of Gravity System

Utilising between 3 and 8 wireless compression load cells, the individual load cell (X, Y) coordinates are entered into the software. The software displays each individual load, a total or summed load and provides the X, Y centre of gravity coordinates.

The system can weigh and calculate centre of gravity on objects and structures weighing anywhere from 20t - 4,000t.

**08**



## SW-MWLC

Straightpoint's Multiple Wireless Load Cell Controller (SW-MWLC) software packages are versatile, user-friendly digital load cell control, display and data logging tools designed for use on the Windows PC platforms Windows, Windows7, Vista and Windows 8.

SW-MWLC allows simultaneous, wireless communication between Straightpoint wireless load cells and a Windows PC. A resizable window displays a table of up to 24 wireless load cell channels of live data. Channels can be set up with user defined algorithms that can be used to calculate a multitude of maths functions. For example, a display can show the value from a single load cell or the sum of multiple load cells. Visual display and audio alarms can indicate under and over range as well as loss in communications, low battery and error reports.

SW-MWLC can log on demand, at pre-set intervals, on entering and leaving a pre-set overload and during an overload. It creates a .csv file which can be loaded for analysis into software programs such as Microsoft Excel. JSON format data is also available on demand via the built in web server.

## SW-MWLC100

For more complex applications our SW-MWLC100 software package can be configured to simultaneously display up to 100 load cell channels of live data.

Graphical pages can be built showing the data in a variety of formats including digital display or bars. Up to eight pages can be defined and the pages easily navigated. A variety of image formats can be imported, including JPG, GIF, PDF and DXF.

Custom applications including branding and colour scheme are available. Please contact our sales department for pricing.

Both SW-MWLC software packages are supplied with a SW-USBBSE extended range USB dongle.

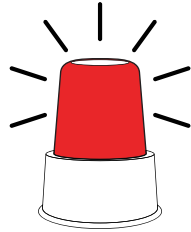
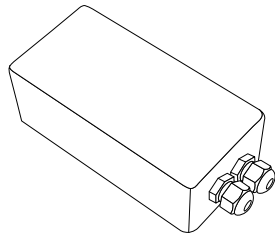
## Features and benefits:

- Displays and logs data from up to 24 or 100 Straightpoint wireless load cells
- Mapping/graphical capabilities
- Webserver offers remote viewing on iPads/tablets/smart phones and also supplies JSON data on demand
- Logging at timed intervals, manual or on overload/underload
- Visual and audible alarms indicates overload, low battery and communications error
- Zoom in to channel to see data trends and history
- Export and log data in .csv format

Global Specifications	
IP rating (SW-USBBSE)	IP65 or NEMA 4X
Operating Temperature	-10°C to +50°C or 14°F to 122°F
Licence	Licence free
Frequency	2.4 GHz
Range	250 metres or 800 feet
Load Cell Inputs	Up to 100
PC Requirements	Intel i3 processor with 2GB RAM
Operating System	Windows XP, Vista, Windows 7 or Windows 8



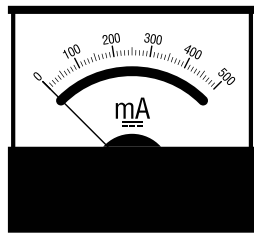
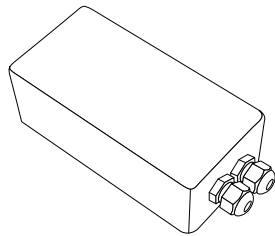
# wireless accessories



## SW-OAM

*Wireless overload alarm module*

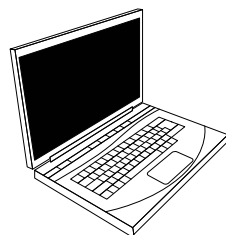
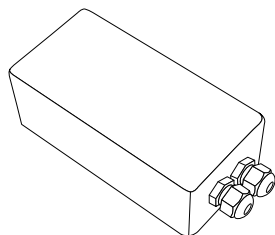
The SW-OAM is a wireless relay module featuring audio and visual warning indicators. The unit's two set point alarms can be triggered from a single or summed group of up to eight Straightpoint wireless load cells. The SW-OAM is ideal as a wireless overload detection system.



## SW-AO1i

*Wireless base station with analogue output*

The SW-AO1i provides a configurable analogue output for any single Straightpoint wireless load cell and is ideal for integration to a PC, PLC or other data acquisition systems. Housed in a NEMA 4 enclosure, the output can be selected from pre-calibrated voltage and current ranges of 0-5vdc, +5vdc, 0-10vdc, +10vdc, 0-20mA, 4-20mA.



## SW-SO

*Serial output ASCII string module*

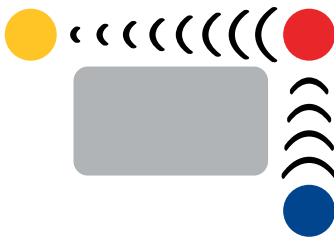
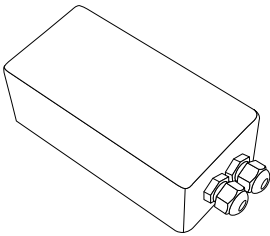
Ideal for integration to a PC, PLC or other device requiring a simple RS232 serial input, this module allows for a user defined ASCII string which can include individual or summed data from up to eight Straightpoint wireless load cells.

# wireless accessories



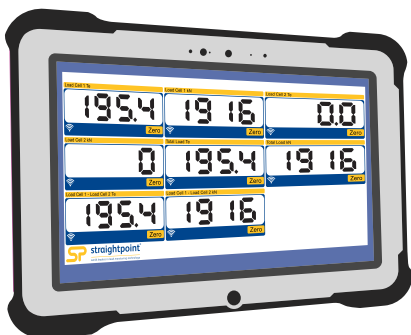
## SW-SD *Wireless slave display*

This 100mm (4") scoreboard LED display is wireless and viewable for up to 150 ft. Perfect for installation on a crane gantry, the unit operates on 110-240 VAC and displays an individual load or summed load for up to eight Straightpoint wireless devices.



## SW-SB *Wireless signal booster*

The SW-SB signal booster/repeater module is battery operated and easily pairs to any Straightpoint wireless device e.g. load cell, accessories, and software solutions within range, quickly increasing coverage and extending range.



## SW-RWT *Rugged tablet*

The SW-RWT tablet is the latest generation fully-rugged tablet. Featuring an array of integrated options, and a sleek, sophisticated design, the SW-RWT will change the way you look at tablets. With a MIL-STD-810G rating and Windows 7 Pro, the SW-RWT can go from the boardroom to the work site without missing a beat.



Unit 9, Dakota Park, Downley Road, Havant, Hampshire PO9 2NJ - UK  
Tel: +44(0)2392 484491 - Fax: +44(0)2392 472211  
[www.straightpoint.com](http://www.straightpoint.com) - [sales@straightpoint.com](mailto:sales@straightpoint.com)



# loadlink plus



Optional connection to our Handheld Plus (SU3343) or our Desktop controller data logging software package (DCP10M).

Known worldwide as the original electronic force measurement device to feature an integral display, the Loadlink Plus has been in production since 1979. Over the years the line has been expanded and the Loadlink Plus is now used on a daily basis for load monitoring and heavy lifts ranging in capacity from 1t to 500t, by a variety of industrial and commercial industries including manufacturing, transportation, agriculture, oil and gas, utilities, aerospace and clean energy.

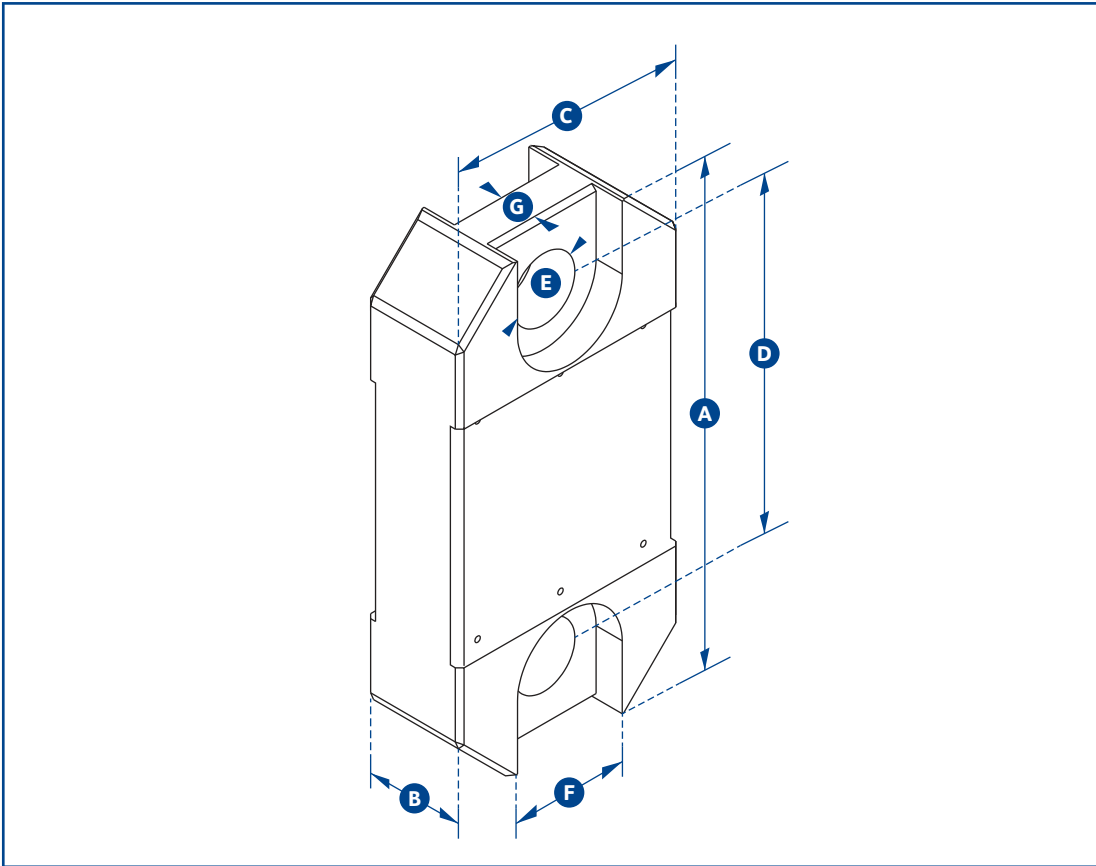
This latest version of the well-known product has advanced features and benefits providing solutions for today's complicated load test and force monitoring needs. The Loadlink Plus features full function push button controls for tare, choice of units (lbs, kg, kN, and tonnes), peak hold, preset tare, audible set-point alarm and an overload counter.

The advanced microprocessor based electronics provide the Loadlink Plus with high speed read rates (500/sec), extreme resistance to industrial level noise and unprecedented stability. This high stability gives the Loadlink Plus over 5,000 divisions and the highest standard resolution of any digital dynamometer on the market today. Constructed of high-grade aircraft quality aluminium, Straightpoint's advanced internal design structure allows the product to once again top the charts with an unmatched weight to strength ratio. Straightpoint's link style dynamometers are on average 30% lighter than our closest competitor with the same safety rating.

## Features and benefits:

- Large LCD display
- High accuracy
- Selectable units
- High resolution
- Peak hold
- Compact size
- Tare
- Lightweight
- Preset tare
- Overload counter
- Audible set point alarm
- RS-485 serial output

# metric specifications



# loadlink plus

Part Number	LLP1T	LLP2T5	LLP5T	LLP12T	LLP25T	LLP35T	LLP50T	LLP75T	LLP100T	LLP150T	LLP200T	LLP250T	LLP300T
Capacity	1,000kg	2.5te	5te	12te	25te	35te	50te	75te	100te	150te	200te	250te	300te
Resolution	0.5kg	0.001te	0.001te	0.002te	0.005te	0.005te	0.01te	0.01te	0.05te	0.05te	0.1te	0.1te	0.1te
Units	te, lbs, kg & kN												
Weight	1.4kg	1.4kg	2kg	3.2kg	5kg	8.6kg	11.5kg	16kg	34kg	46kg	72kg	72kg	118kg
Safety Factor	12:1	5:1	5:1	5:1	5:1	5:1	5:1	5:1	5:1	4:1	5:1	4:1	5:1
Battery Type	9v PP3												
Battery Life	80 hours continuous												
Display Type	6 digit 25mm LCD												
Operating Temp	-10°C to +50°C												
Accuracy	± 0.3% of applied load												
Protection	IP65												
Dimension A	204	204	249	305	340	393	424	470	608	670	700	700	806
Dimension B	43	43	43	47	60	75	75	75	99	99	144	144	150
Dimension C	101	101	101	101	115	126	163	202	255	303	320	320	426
Dimension D	146	146	165	193	215	225	230	260	320	360	350	350	350
Dimension E	24.5	24.5	38	47.5	55	60	76	76	109	109	132	132	160
Dimension F	48	48	66	Not available on this capacity									
Dimension G	19	19	32	Not available on this capacity									
Crosby Shackle	G2130						G2140						
Loading Pin Ø	19	19	25	35	51	57	57	70	83	95	121	127	152



Unit 9, Dakota Park, Downley Road, Havant, Hampshire PO9 2NJ · UK  
 Tel: +44(0)2392 484491 · Fax: +44(0)2392 472211  
[www.straightpoint.com](http://www.straightpoint.com) · [sales@straightpoint.com](mailto:sales@straightpoint.com)



# wirelink plus



The Wirelink Plus is the non-indicating version of our very popular Radiolink Plus and Loadlink Plus digital dynamometer tension load cells. This non-indicating Loadlink is designed for use with our Handheld Plus digital display, desktop controller PC software (DCP10M) or other form of instrumentation.

Manufactured from aerospace grade aluminium and utilising an advanced internal design structure, this range of non-indicating load cells are extremely lightweight, easy to handle and are used worldwide in an array of industries for lifting, pulling, proof and structural load testing.

The extremely versatile platform can be used with digital displays including the Straightpoint Handheld Plus, PLCs, data acquisition systems (DAQ) etc. and configured with a vast array of output formats to include mV/V, RS-422, RS-485, utilising the ASCII, MODBUS TRU and CAN-BUS protocols.

A standard analogue output option is available to include:

- 3 wire 0-10v
- 3 wire 0-5v
- 4 wire +/-10v
- 3 wire 4-20mA
- 2 wire 4-20mA

The Wirelink Plus is supplied with a 10 metre cable as standard, however, usable cable length varies greatly with lengths available to 1,500 metres depending on output format.

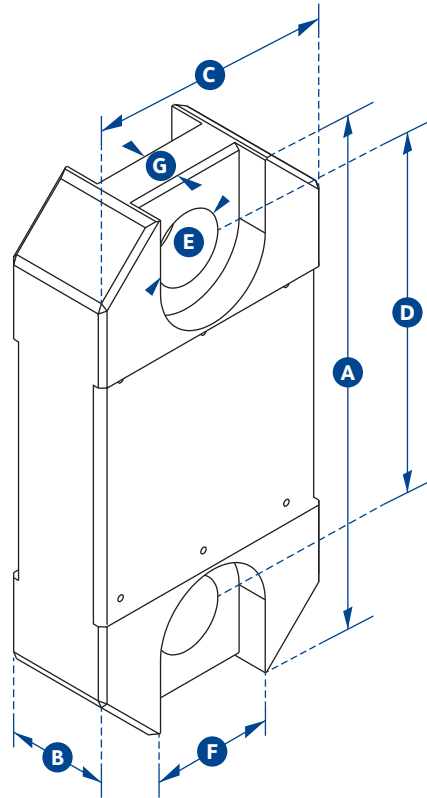
## Features and benefits:

- Constructed of lightweight aluminium
- Available in capacities ranging from 1 to 300 tonnes
- High accuracy
- Multiple output options to include mV/V, analogue out, ASCII, MODBUS RTU and CAN-BUS
- Available with IP68 environmental protection
- Options for subsea use available



# metric specifications

wirelink plus



Part Number	WLP1T	WLP2T5	WLP5T	WLP12T	WLP25T	WLP35T	WLP50T	WLP75T	WLP100T	WLP150T	WLP200T	WLP250T	WLP300T
Capacity	1000kg	2.5te	5te	12te	25te	35te	50te	75te	100te	150te	200te	250te	300te
Resolution	0.5kg	0.001te	0.001te	0.002te	0.005te	0.005te	0.01te	0.01te	0.05te	0.05te	0.1te	0.1te	0.1te
Weight	1.4kg	1.4kg	2kg	3.2kg	5kg	8.6kg	11.5kg	16kg	34kg	46kg	72kg	72kg	118kg
Safety Factor	12:1	5:1	5:1	5:1	5:1	5:1	5:1	5:1	5:1	4:1	5:1	4:1	5:1
Operating Temp	-10°C to +50°C												
Accuracy	± 0.3% of applied load												
Protection	IP67												
Dimension A	204	204	249	305	340	393	424	470	608	670	700	700	806
Dimension B	43	43	43	47	60	75	75	75	99	99	144	144	150
Dimension C	101	101	101	101	115	126	163	202	255	303	320	320	426
Dimension D	146	146	165	193	215	225	230	260	320	360	350	350	350
Dimension E	24.5	24.5	38	47.5	55	60	76	76	109	109	132	132	160
Dimension F	48	48	66	Not available on this capacity									
Dimension G	19	19	32	Not available on this capacity									
Crosby Shackle	G2130						G2140						
Loading Pin Ø	19	19	25	35	51	57	57	70	83	95	121	127	152

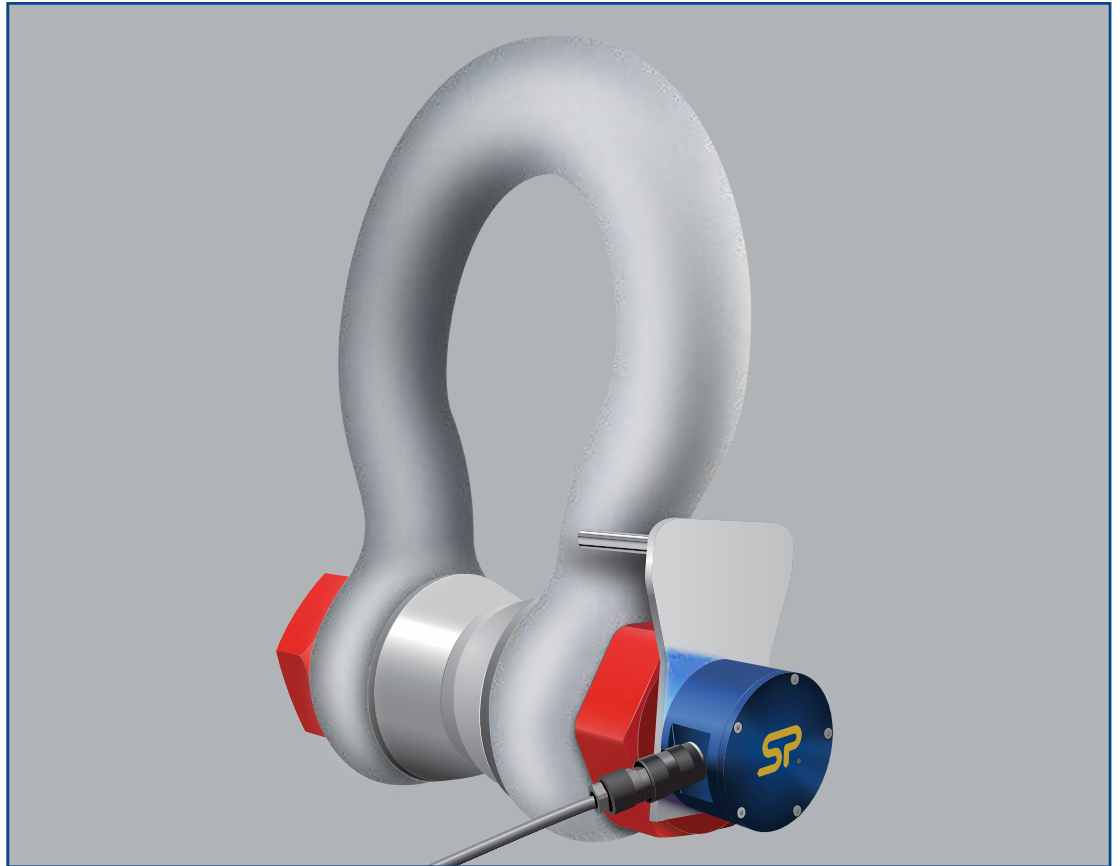
Options					
Part Number	ICA1	ICA2	ICA3	ICA4	ICA5
Description	3 wire 0-10v analogue output	3 wire 0-5v analogue output	4 wire ±10v analogue output	3 wire 4-20mA analogue output	2 wire 4-20mA analogue output



Unit 9, Dakota Park, Downley Road, Havant, Hampshire PO9 2NJ · UK  
 Tel: +44(0)2392 484491 · Fax: +44(0)2392 472211  
 www.straightpoint.com · sales@straightpoint.com



# loadshackle



Available from stock in capacities 3.25t to 120t, and available up to 1,550t, the Loadshackle is manufactured from Crosby's industry leading 2130 Carbon and 2140 Alloy Bolt Type Anchor Shackles (3.25te - 120te) and the GN H10 Alloy Bolt Type Anchor Shackle (120te on up). The Loadshackle offers reduced overall weight and headroom providing a great fit for low headroom applications.

Utilising the same advanced microprocessor based electronics as all Straightpoint products, our cabled Loadshackle benefits from high sampling rates, extreme resistance to industrial level noise and unprecedented stability. Our huge range of tooling allows us to calibrate in shackle for extra accuracy unlike many other load cell manufacturers. This high stability provides the product with over 5,000 divisions and the highest standard resolution of any high capacity Loadshackle on the market today. Straightpoint cabled loadshackles are also environmentally sealed to IP67 and as an option, sealed for permanent submersion for sub-sea use.

Whether used in heavy lifting, mooring anchor placement or sub-sea applications, Straightpoint's cabled loadshackle offers robust construction, advanced electronics, industry leading resolution and accuracy all at a cost-effective, affordable price.

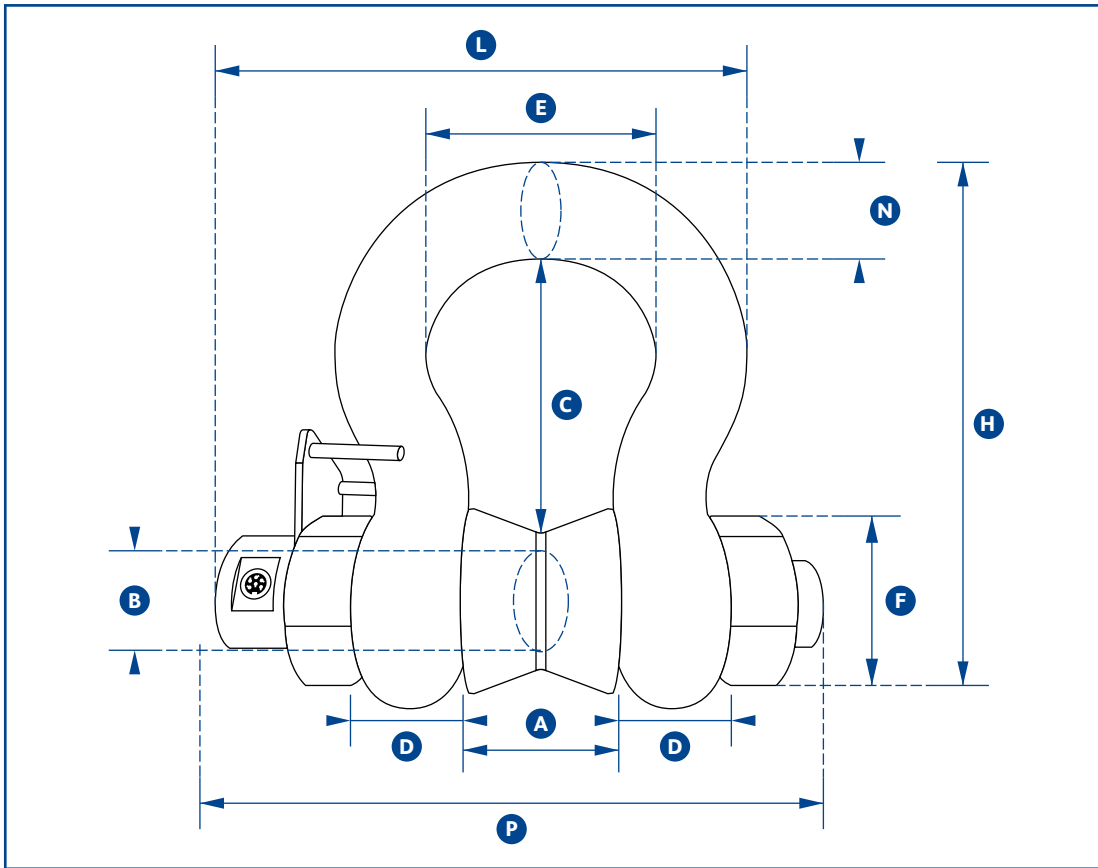


Requires connection to our Handheld Plus (SU3343), our desktop controller data logging software package (DCP10M) or our External Amplifier (SA-3420), or other instrumentation.

## Features and benefits:

- Robust construction
- Compact size and low headroom
- High accuracy
- Every unit proof tested
- Lightweight
- Audible overload alarm
- Unrivalled resolution
- Tare
- Environmentally sealed
- Peak hold
- Advanced options available

## metric specifications



# loadshackle

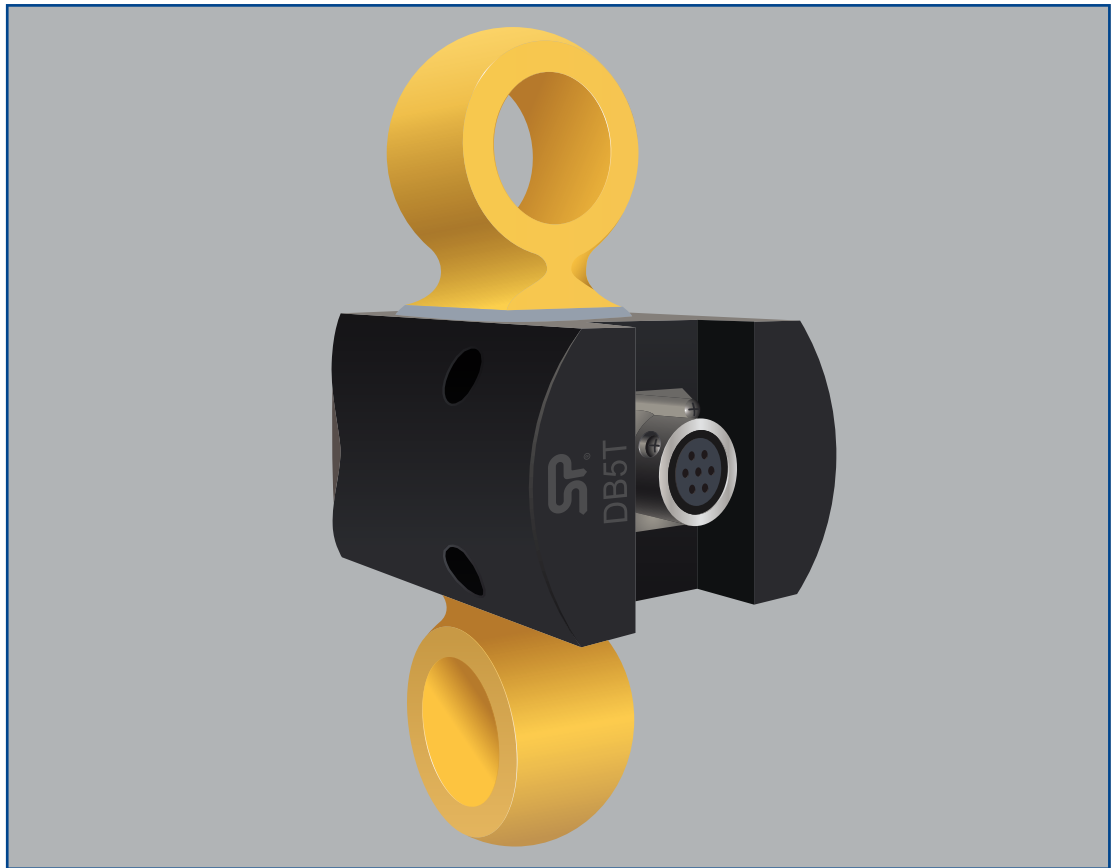
Part Number	SLB1T	SLB3.25T	SLB6.5T	SLB12T	SLB25T	SLB55T	SLB85T	SLB120T	SLB200T	SLB300T	SLB400T
Capacity	1te	3.25te	6.5te	12te	25te	55te	85te	120te	200te	300te	400te
Resolution	0.001te	0.005te	0.005te	0.01te	0.02te	0.05te	0.05te	0.1te	0.2te	0.5te	0.5te
Weight	2kg	2.8kg	3.2kg	8kg	18kg	25kg	45kg	85kg	215kg	364kg	520kg
Safety Factor	300% of rated load										
Operating Temp	-10°C to +50°C										
Accuracy	±1%										
Protection	IP67 std or submersion to 30m as an option										
Dimension A	16.8	26.9	36.6	51.5	73	82.5	105	127	184	213	210
Dimension B	11.2	19.1	25.4	35.1	51	57	70	82.5	121	152	178
Dimension C	36.6	60.5	84	119	178	197	267	330	397	495	572
Dimension D	9.65	16	22.4	31.8	44.5	51	66.5	76	95.5	121	165
Dimension E	26.2	42.9	58	82.5	127	164	184	200	279	330	330
Dimension F	23.1	38.1	53	76	106	122	145	165	267	305	356
Dimension H	63	106	148	210	313	348	453	546	743	895	1022
Dimension L	87.2	116	142	180	265	290	352	392	562	664	689
Dimension N	9.65	17.5	24.6	35.1	57	61	79	92	152	172	184
Dimension P	68	103	133	178	243	277	357	432	534	631	723



Unit 9, Dakota Park, Downley Road, Havant, Hampshire PO9 2NJ · UK  
 Tel: +44(0)2392 484491 · Fax: +44(0)2392 472211  
[www.straightpoint.com](http://www.straightpoint.com) · [sales@straightpoint.com](mailto:sales@straightpoint.com)



# low headroom link



New for 2015 Straightpoint introduces its range of low headroom links designed to provide accurate measurement of loads in the most challenging applications where headroom restrictions are a major factor.

Constructed from high strength alloy steel and exposed to an array of testing during development, this impressive range of load cells are designed to work with industry standard shackles from manufacturers such as Crosby and Van Beest. Applications include weighing, lifting, force measurement and load monitoring of structures such as lighting trusses, hoist mountings and fly line tensioning.

The unique low headroom design combines the ability to lift loads with capacities up to 30 tonnes with state-of-the-art electronics, high accuracy and resolution of over 5000 divisions. Measured loads can be displayed with our Handheld Plus digital display/controller or Windows PC Desktop Controller data logging software.

A vast array of optional output formats are also available to include mV/V, RS-422, RS-485, utilising the ASCII, MODBUS, TRU and CAN-BUS protocols and analog outputs such as 4-20mA for connection to PLCs, Data Acquisition systems (DAQ) or other required instrumentation. Usable cable length varies greatly, ranging from 10 metres to 1,500 metres depending on output format.

A wireless output module is also available on application.

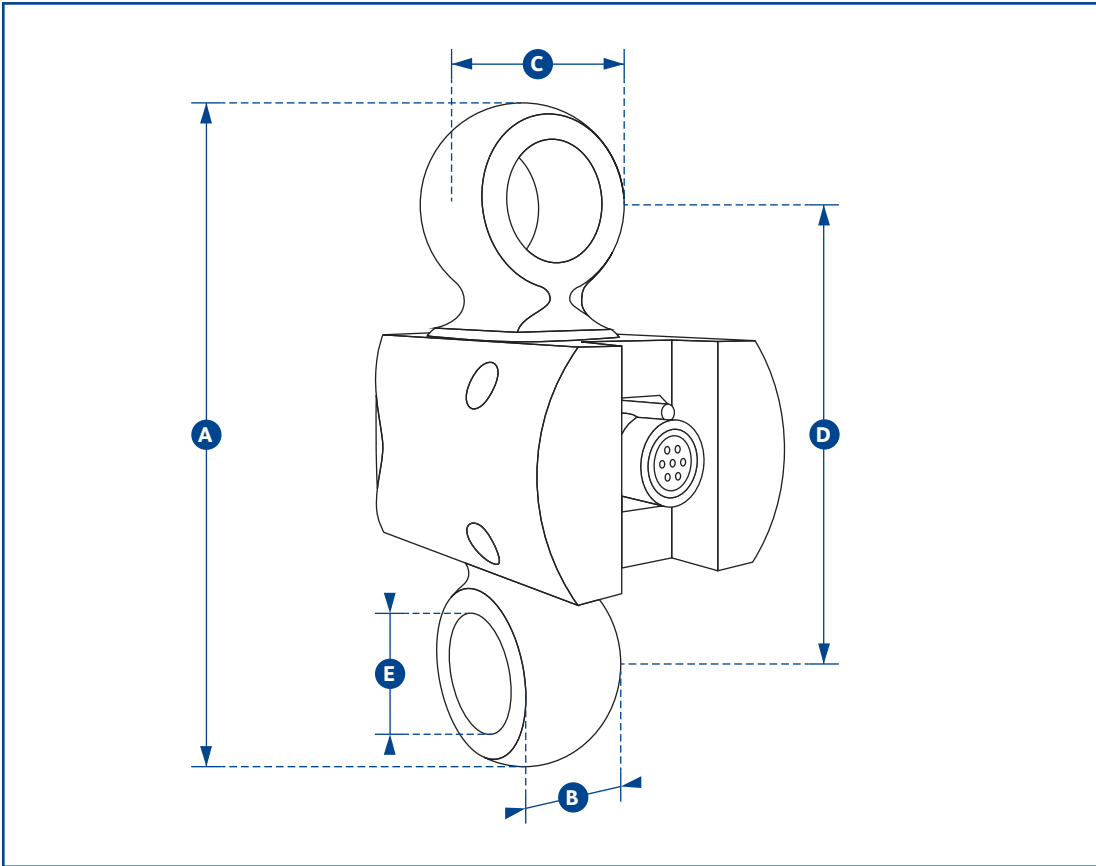


Requires connection to our Handheld Plus (SU3343), our desktop controller data logging software package (DCP10M) or our External Amplifier (SA-3420), or other instrumentation.

## Features and benefits:

- Low height
- Range from 1t to 30t
- High accuracy
- Lightweight and portable
- Accepts standard shackles
- Constructed from high strength alloy steel
- Huge range of output options
- Connects to Straightpoint data logging software

## metric specifications



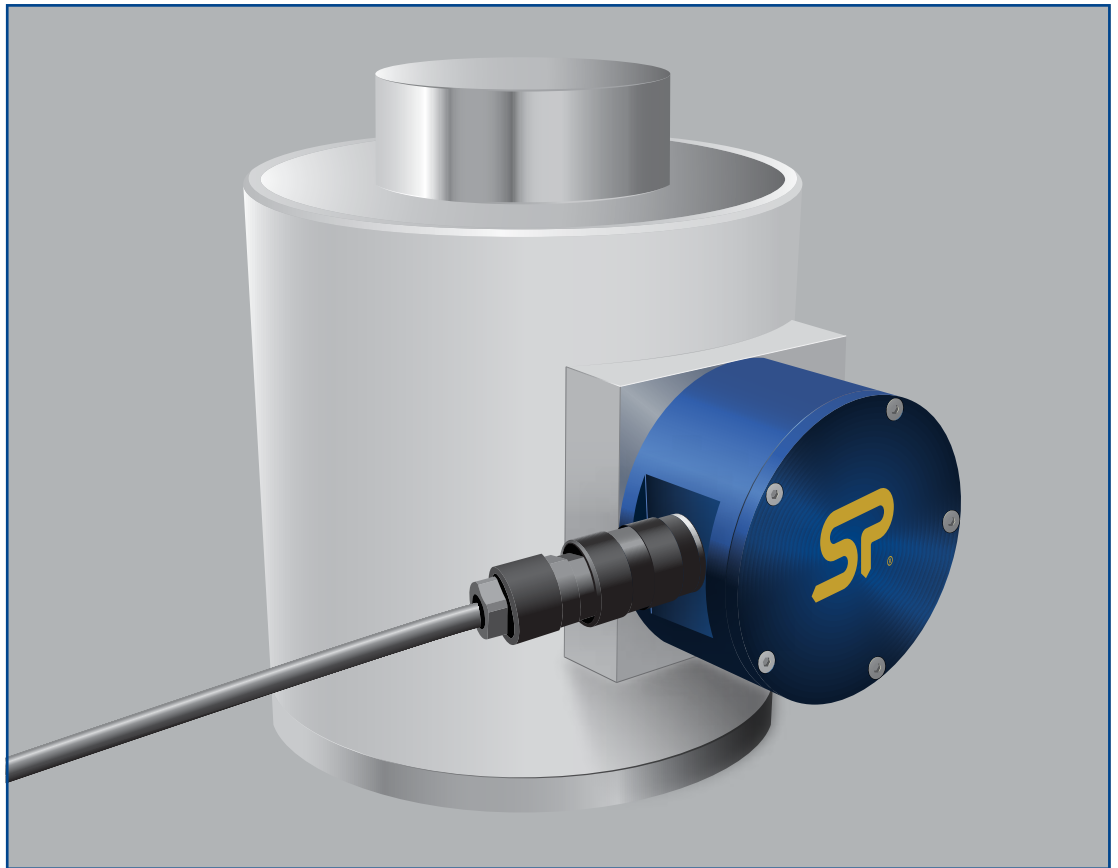
# low headroom link

Part Number	DB1T	DB3T	DB5T	DB10T	DB20T	DB30T
Capacity	1000kg	3te	5te	10te	20te	30te
Resolution	0.5kg	0.001te	0.001te	0.002te	0.005te	0.005te
Weight	1kg	1.2kg	2kg	2.5kg	4kg	6.2kg
Safety Factor	5:1					
Operating Temp	-10°C to +50°C					
Accuracy	± 0.3% of applied load					
Protection	IP65					
Dimension A	110	129	165	205	249	248
Dimension B	18	25	33	41	66	58
Dimension C	33	35	50	63	90	87
Dimension D	74	88	111	135	153	150
Dimension E Ø	18	21	27	37	53	44
Recommended Shackle	G2130-2T	G2130-3.25T	G2130-6.5T	G2130-12T	G2130-25T	G2140-30T





# compression load cell



Manufactured in ranges from 5t to 500t - other capacities available on application. Straightpoint compression load cells are manufactured to the same stringent standards as all Straightpoint products. The bodies are machined from high grade stainless steel, offering excellent strength and anti-corrosion properties. Supplied with optional loadcap to protect objects being tested.

The compact lightweight design provides ease of use and superior portability, allowing Straightpoint compression load cells to be used in a broad range of industries including mining, energy, defence, heavy rigging, shipping, and general transportation sectors.

Utilising the same advanced microprocessor based electronics as all Straightpoint products, Straightpoint's compression load cells benefit from high sampling rates, extreme resistance to industrial level noise and unprecedented stability. This high stability gives this product over 5,000 divisions and the highest standard resolution of any high capacity compression load cell on the market today.

Like all Straightpoint products, our compression load cells offer robust construction, advanced electronics, industry leading resolution and accuracy all at a cost-effective, affordable price.

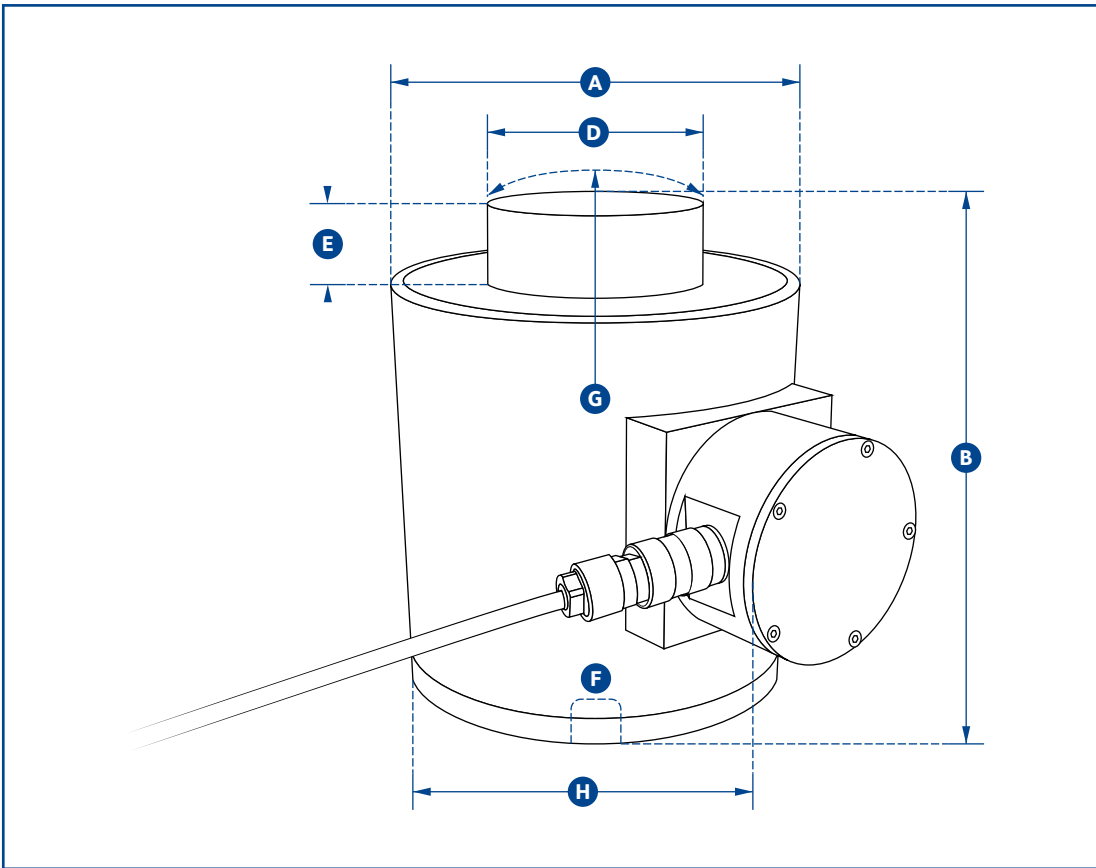


Requires connection to our Handheld Plus (SU3343), our desktop controller data logging software package (DCP10M) or our External Amplifier (SA-3420), or other instrumentation.

## Features and benefits:

- Compact size
- Stainless steel construction
- High accuracy
- Lightweight
- Peak hold
- Compact size
- Tare
- Preset tare
- Audible set point alarm
- Reduced maintenance cost
- Unrivalled resolution
- RS-485 serial output

## metric specifications



# compression load cell

Part Number	NI5TC	NI10TC	NI25TC	NI50TC	NI100TC	NI150TC	NI300TC	NI500TC
Capacity	5te	10te	25te	50te	100te	150te	300te	500te
Resolution	0.001te	0.002te	0.005te	0.01te	0.05te	0.05te	0.1te	0.2te
Units	tonne							
Weight	3.2kg	3.2kg	3.2kg	6.2kg	15.5kg	15.5kg	65kg	65kg
Safety Factor	3:1							
Operating Temp	-10°C to +50°C							
Accuracy	± 0.3% of applied load							
Protection	IP67							
Dimension A	76	76	76	102	152	152	185	185
Dimension B	83	83	83	127	184	184	300	300
Dimension D	32	32	32	59	80	80	155	155
Dimension E	10	10	10	13	26	26	27.5	27.5
Dimension F	M12 x 1.75	M12 x 1.75	M12 x 1.75	M20 x 2.5	M20 x 2.5	M20 x 2.5	M20 x 2.5	M20 x 2.5
Dimension G	152	152	152	152	432	432	432	432
Dimension H	96	96	96	154	204	204	237	237

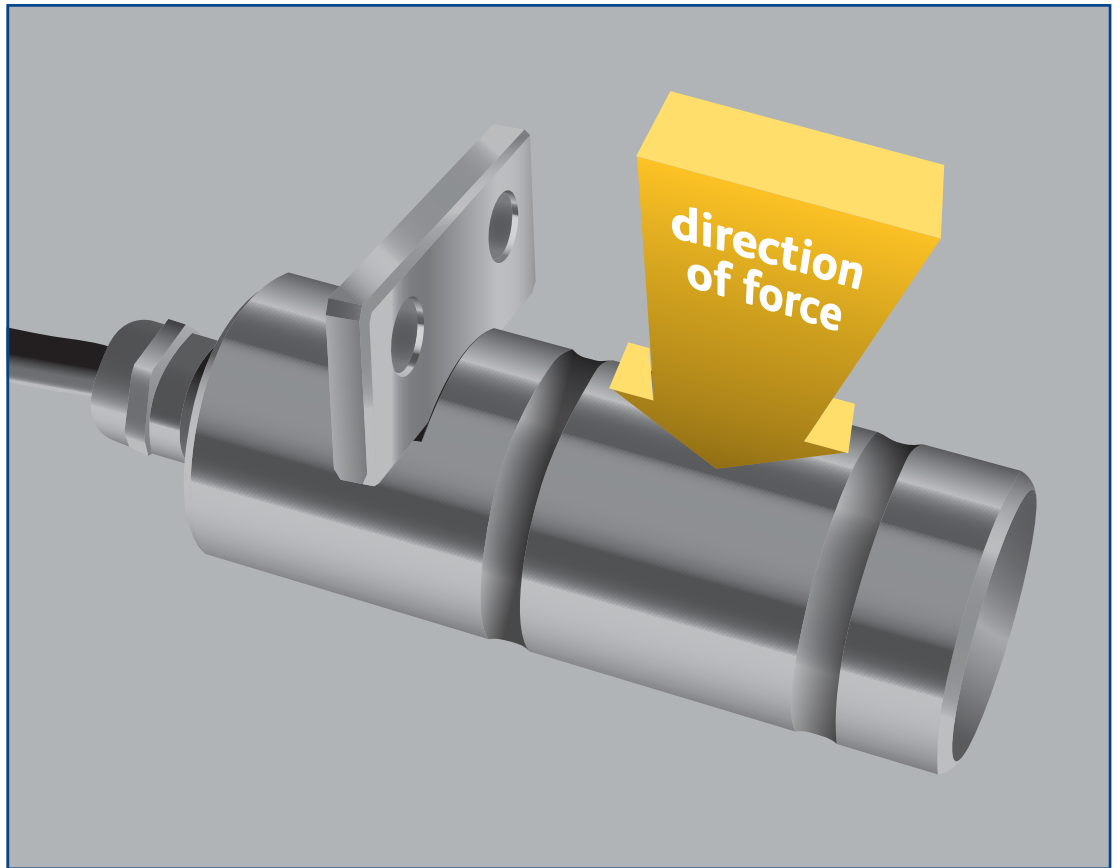
Capacities from 500t - 2,000t (price on application).



Unit 9, Dakota Park, Downley Road, Havant, Hampshire PO9 2NJ - UK  
 Tel: +44(0)2392 484491 · Fax: +44(0)2392 472211  
[www.straightpoint.com](http://www.straightpoint.com) · [sales@straightpoint.com](mailto:sales@straightpoint.com)



# load pin



The Straightpoint range of Load Measurement Pins are designed for general use. They are machined from high tensile stainless steel and are normally supplied complete with an anti-rotation plate.

They are built to exacting standards and are suitable for use in exposed situations and can be supplied to withstand immersion in seawater. This range of load cells is proof loaded to 150% of the normal rated load.



Requires connection to our Handheld Plus (SU3343), our desktop controller data logging software package (DCP10M) or our External Amplifier (SA-3420), or other instrumentation.

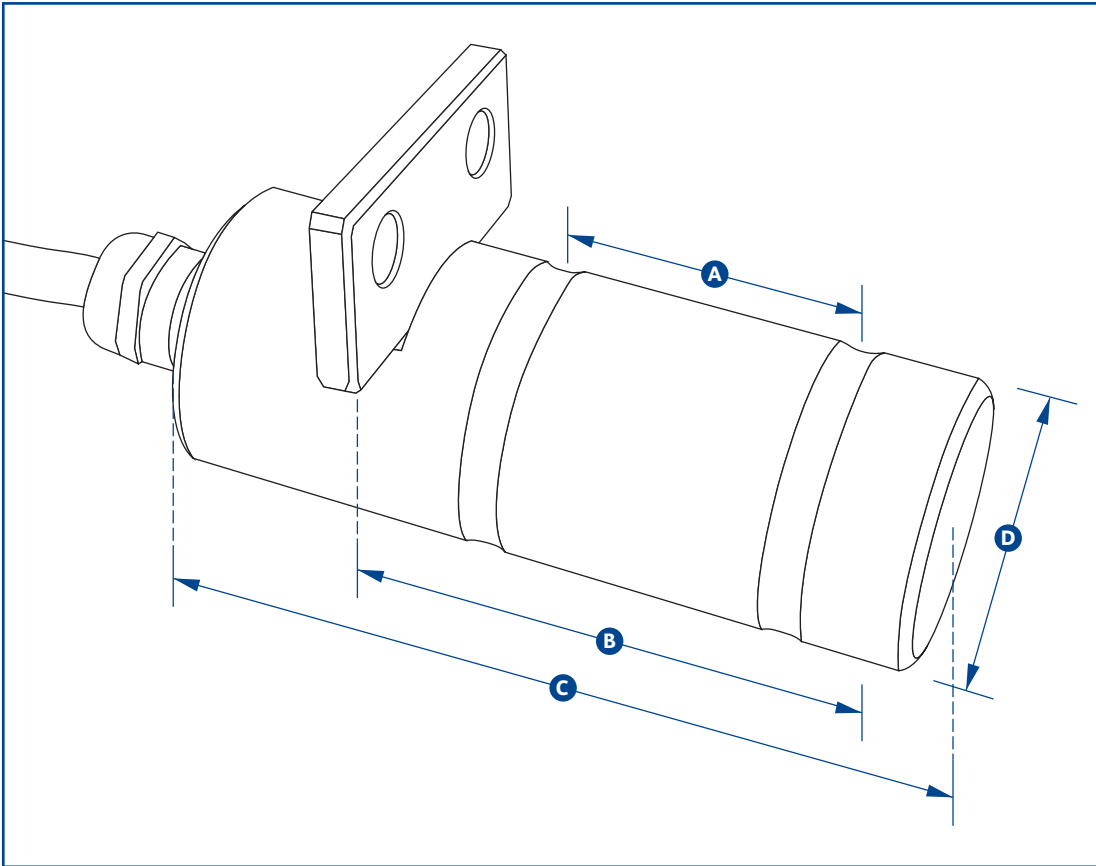
Please advise cable configuration on order - Radial or Axial Pin exit.  
If you require a load pin to a particular size and design, download our load pin questionnaire, found on our website, and return, price on application.

## Applications:

- Marine tankers, offshore platforms
- Elevator and floor conveyor testing and certification
- Bearing blocks, pivots and shackles
- Cable laying equipment
- Rope, chain, and brake anchors
- Bridge support cables
- Mooring lines
- Pulleys and sheaves
- Crane cables
- Hoisting gear
- Winches



## metric specifications



# load pin

Part Number	LP500KG	LP1T	LP2.5T	LP3.5T	LP6.5T	LP15T	LP25T	LP50T	LP100T	LP250T	LP500T	LP750T	LP1000T	LP1500T
Capacity	500kg	1000kg	2.5te	3.5te	6.5te	15te	25te	50te	100te	250te	500te	750te	1000te	1500te
Resolution	0.2kg	0.5kg	0.001te	0.001te	0.002te	0.002te	0.005te	0.01te	0.05te	0.1te	0.2te	0.2te	0.5te	0.5te
Units	kgs, tonnes													
Weight	0.9kg	1kg	1.2kg	1.4kg	2kg	3.1kg	5.6kg	8.6kg	11.8kg	29.8kg	79.2kg	146kg	275kg	389kg
Safety Factor	300% of WLL													
Operating Temp	-20°C to +70°C													
Accuracy	±1% of applied load													
Protection	IP67 (IP68 available as option)													
Dimension A	24	35	45	50	63	75	89	102	110	130	225	295	360	430
Dimension B	36	49	70	75	95	114	152	178	190	220	370	500	612	731
Dimension C	70	80	100	105	125	150	195	225	230	300	440	590	712	832
Dimension D	20	20	25	30	40	50	63	75	88	125	170	200	250	275

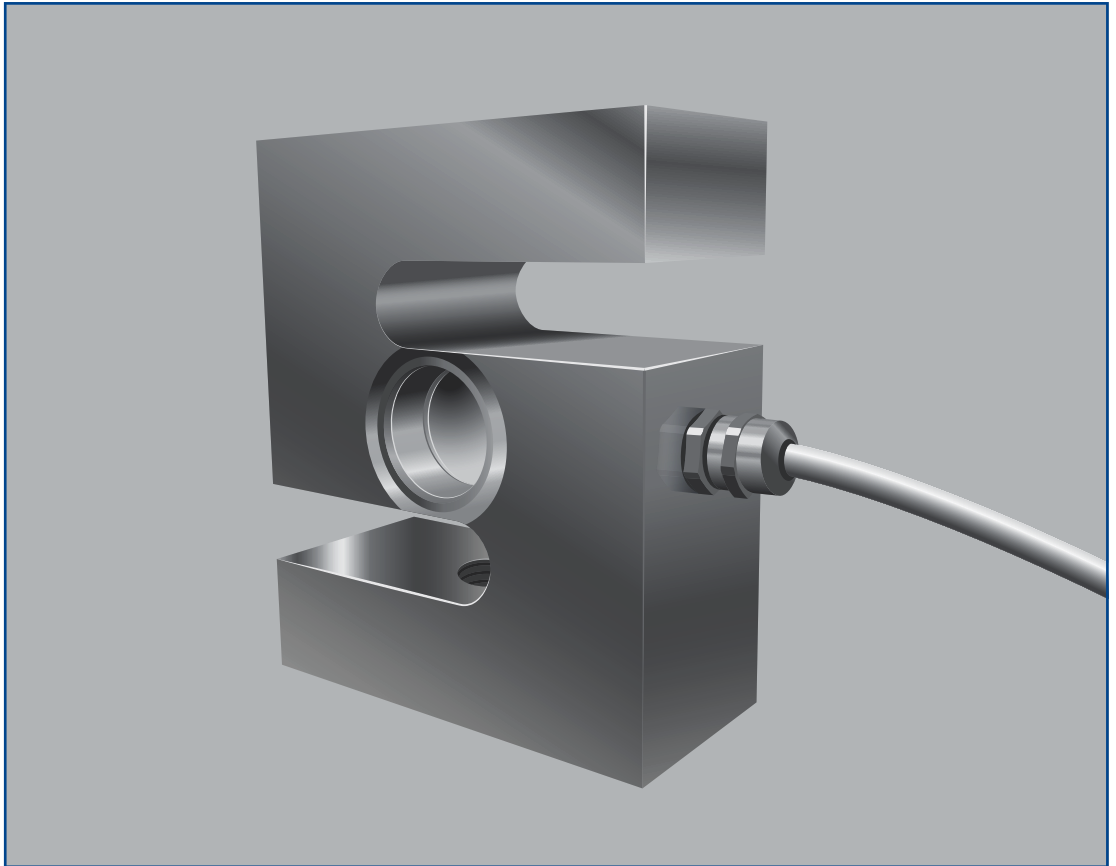
Please note: If you require a load pin to a particular size and design, download our load pin questionnaire and return (price on application).  
Wireless Load Pins available (price on application).



Unit 9, Dakota Park, Downley Road, Havant, Hampshire PO9 2NJ · UK  
Tel: +44(0)2392 484491 · Fax: +44(0)2392 472211  
www.straightpoint.com · sales@straightpoint.com



# 's' beam load cell



A range of stainless steel 'S' Beam load cells from 100kg to 5t. The Straightpoint 'S' Beam range of tension/compression load cells are suitable for smaller silo, vessel and tank weighing applications or for building into OEM projects, testing machines, etc.

Hardwired, they are supplied with a 10 metre cable and can be connected to the Straightpoint range of accessories such as the Handheld Plus.

The 'S' Beam load cell can be used in both tension or compression and has a threaded hole at each end making it a very flexible solution.

Fitting options available including threaded bar, rod end bearing and eyebolts.

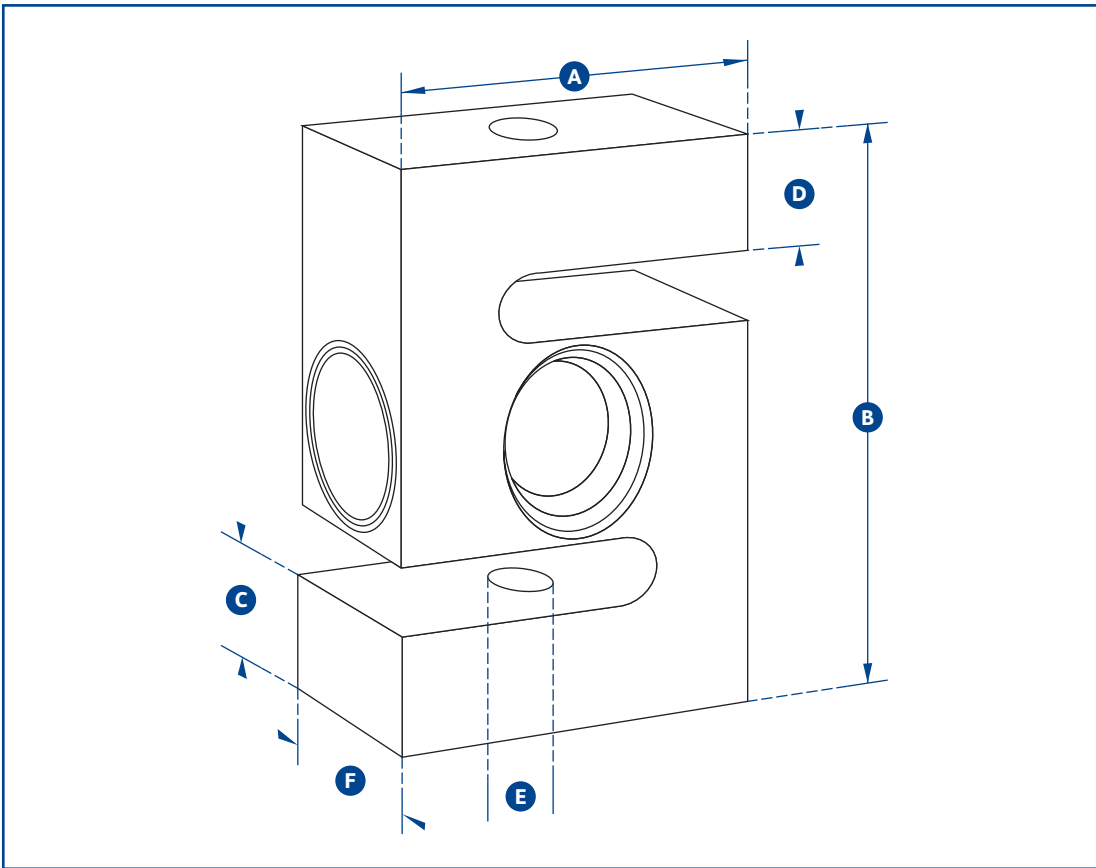


Requires connection to our Handheld Plus (SU3343), our desktop controller data logging software package (DCP10M) or our External Amplifier (SA-3420), or other instrumentation.

## Features and benefits:

- Fully sealed up to IP67
- High accuracy
- High endurance
- Built-in overload protection
- High capacity/Low capacity
- Compact designs available for tight environment
- In both tension and compression
- Single point construction

## metric specifications



# 's' beam load cell

Part Number	SB500K	SB1T	SB2T	SB5T
Capacity	500kg	1te	2te	5te
Resolution	0.2kg	0.0005te	0.001te	0.001te
Weight	0.9kg	0.9kg	0.9kg	1.9kg
Safety Factor	5:1			
Operating Temp	-30°C to +80°C			
Accuracy	±0.3% of applied load			
Protection	IP67			
Dimension A	70	70	70	100
Dimension B	90	90	90	120
Dimension C	19	19	19	26
Dimension D	19	19	19	26
Dimension E	M12 x 1.75	M16 x 2	M16 x 2	M24 x 2
Dimension F	32	32	32	45



Unit 9, Dakota Park, Downley Road, Havant, Hampshire PO9 2NJ - UK  
 Tel: +44(0)2392 484491 · Fax: +44(0)2392 472211  
[www.straightpoint.com](http://www.straightpoint.com) · [sales@straightpoint.com](mailto:sales@straightpoint.com)



# loadblock plus



The Loadblock Plus is a low capacity, self-indicating compression load cell, used in many testing and load monitoring applications worldwide. The integral display eliminates the need for a separate display or cable assembly that can be easily damaged. Applications include the measurement of loads associated with the testing of hydraulic presses, cylinders or jacks.

This latest version of our Loadblock has advanced features and benefits providing solutions for today's complicated load test and force monitoring needs. Features include full function push button controls for tare, units of measure (lbs, kg, kN, and tonnes), peak hold, pre-set tare, audible set-point alarm and an overload counter.

This crucial overload alarm counter is a requirement for many safety and quality control departments as it keeps track of overload events allowing the load cell in question to be removed from service immediately following a calibration voiding overload event. The load cell in question can then be sent out for proper testing and if necessary, recalibration before re-entering service.

The advanced microprocessor based electronics provide the Loadblock Plus with high speed read rates (500/sec), extreme resistance to industrial level noise and unprecedented stability.

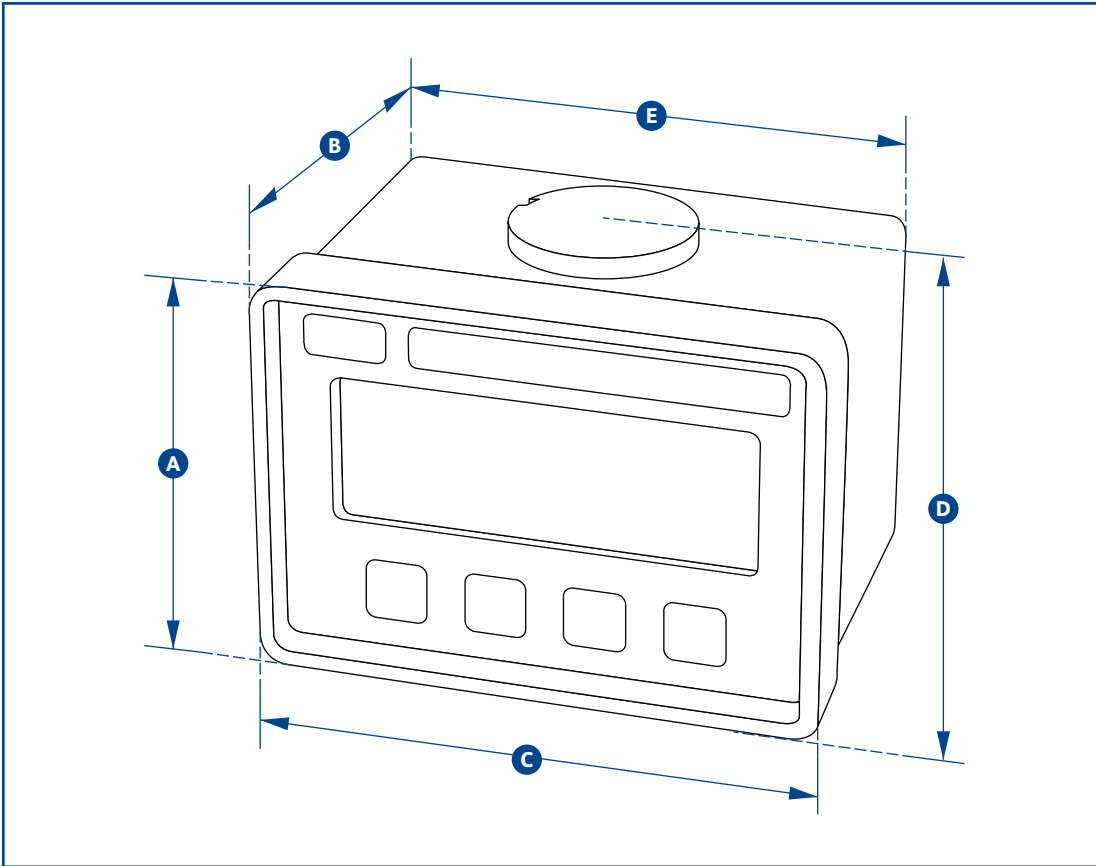
This high stability provides the Loadblock Plus with 5,000 + divisions and the highest standard resolution of any self-indicating compression load cell on the market today.

The unit also features a RS-485 serial output port allowing for remote viewing with either the Handheld Plus digital display/controller or Windows PC desktop controller data logging software.

## Features and benefits:

- Large LCD Display
- High resolution
- Peak hold
- Compact size
- Tare
- Preset tare
- Offset adjustment

## metric specifications



# loadblock plus

Part Number	LBP250KG	LBP500KG	LBP1T	LBP2T	LBP5T
Capacity	250kg	500kg	1te	2te	5te
Resolution	0.1kg	0.2kg	0.0005te	0.001te	0.001te
Units	t, kg, kN and lbs				
Weight	900g	900g	900g	1.5kg	3.1kg
Safety Factor	4:1	5:1	5:1	5:1	5:1
Battery Type	9v PP3				
Battery Life	80 hours continuous				
Operating Temp	-10°C to +50°C				
Accuracy	± 0.3% of applied load				
Display Type	6 digit 25mm LCD				
Protection	IP65				
Dimension A	81	81	81	92	92
Dimension B	81	81	81	117	136
Dimension C	113	113	113	112	112
Dimension D	90	90	90	104	115
Dimension E	104	104	104	Not available on this capacity	



Unit 9, Dakota Park, Downley Road, Havant, Hampshire PO9 2NJ · UK  
 Tel: +44(0)2392 484491 · Fax: +44(0)2392 472211  
[www.straightpoint.com](http://www.straightpoint.com) · [sales@straightpoint.com](mailto:sales@straightpoint.com)



# miniweigher plus



This small and compact mini crane weigher scale will suit most lifting applications. Available in capacities from 100kg to 5t. Worldwide, it's our most popular product and has been manufactured since 1987. The MiniWeigher Plus crane scale offers robust construction, high accuracy, compact size and extreme portability.

Utilised by utility companies on every continent, the MiniWeigher Plus crane scale is quite often mounted between a winch and a tripod, allowing the load monitoring and safe lowering and raising of equipment and personnel, and has proven itself to be an indispensable tool for underground sewer, water, gas, and utility vault access.

The MiniWeigher Plus features full function push button controls for tare, choice of units (lbs, kg, kN and tonnes), peak hold, preset tare, audible set-point alarm and an overload counter.

Straightpoint's advanced microprocessor based electronics provide the MiniWeigher Plus with high speed read rates (500/sec), extreme resistance to industrial level noise and unprecedented stability. This high stability allows 5,000 + divisions and the highest standard resolution of any compact digital crane scale on the market today. The unit also features a RS-485 serial output providing added functionality and versatility.

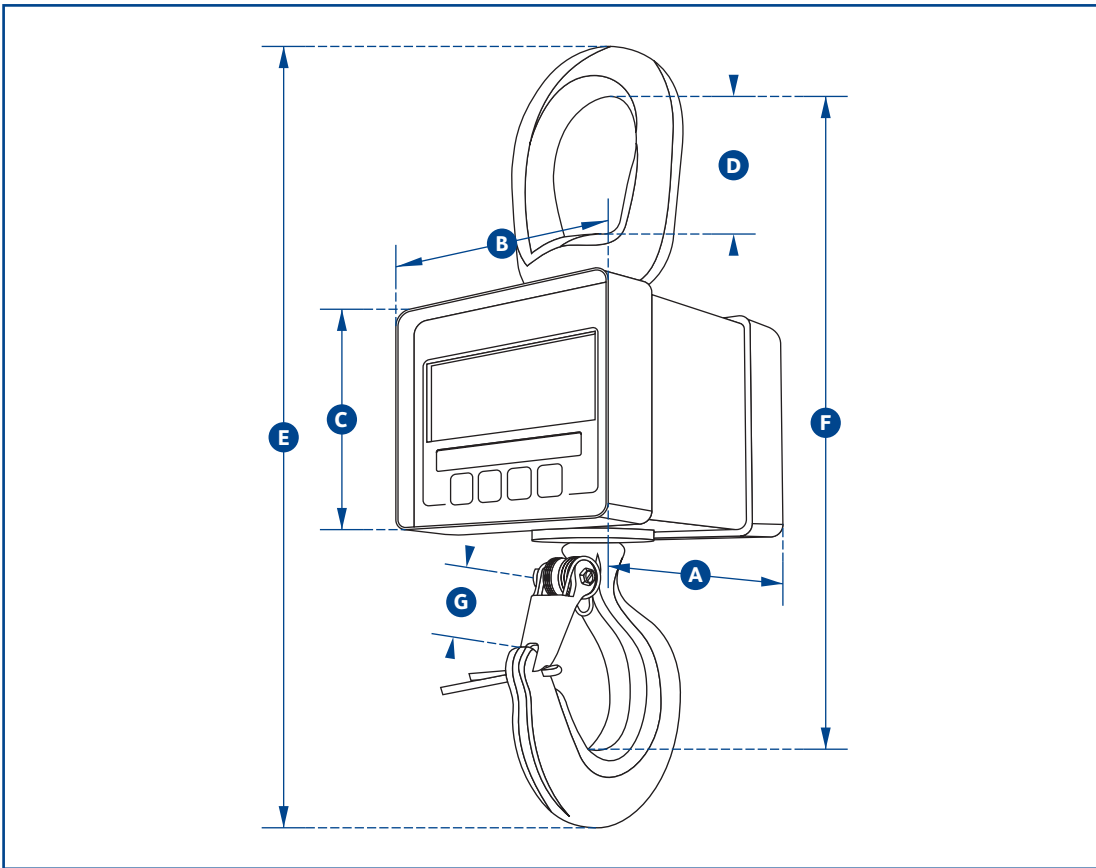
In all, the lightweight design, corrosion resistant finish, advanced electronics and full feature display have made the MiniWeigher Plus crane scale the only choice when looking for a compact and lightweight light capacity crane scale.

## Features and benefits:

- Large LCD Display
- High Accuracy
- Selectable Units
- High Resolution
- Compact Size
- Tare
- Preset Tare
- Lightweight
- Overload Counter
- Audible Set Point Alarm
- RS-485 Serial Output
- Corrosion Resistant Finish

## metric specifications

# miniweigher plus



Part Number	MWP100KG	MWP250KG	MWP500KG	MWP1T	MWP2T	MWP5T
Capacity	100kg	250kg	500kg	1000kg	2te	5te
Resolution	0.05kg	0.1kg	0.2kg	0.5kg	0.001te	0.001te
Units	t, kg, kN and lbs					
Weight	1.5kg	1.5kg	1.5kg	1.5kg	3.1kg	8.7kg
Safety Factor	10:1	5:1	5:1	5:1	5:1	5:1
Battery Type	9v PP3					
Battery Life	80 hours continuous					
Operating Temp	-10°C to +50°C					
Accuracy	±0.3% of applied load					
Display Type	6 digit 25mm LCD					
Protection	IP65					
Dimension A	82	82	82	82	117	136
Dimension B	113	113	113	113	112	112
Dimension C	81	81	81	81	92	92
Dimension D	50	50	50	50	64	98
Dimension E	240	240	240	240	320	444
Dimension F	208	208	208	208	271	365
Dimension G	22	22	22	22	28	42



Unit 9, Dakota Park, Downley Road, Havant, Hampshire PO9 2NJ · UK  
 Tel: +44(0)2392 484491 · Fax: +44(0)2392 472211  
[www.straightpoint.com](http://www.straightpoint.com) · [sales@straightpoint.com](mailto:sales@straightpoint.com)



# jumboweigher



A popular choice among steel service centres and other industrial manufacturers, the JumboWeigher crane scale from Straightpoint offers a cost-effective alternative to its more expensive rivals from MSI and Intercomp. The JumboWeigher series of crane scales offers high capacity, quality, accuracy, and safety at low capacity prices and are utilised worldwide in a variety of manufacturing and industrial applications.

As with all Straightpoint products each JumboWeigher crane scale receives superior electronics, excellent build quality and certified calibration and proof testing. The heavy duty crane scale is extremely accurate, and is manufactured from quality materials, featuring a high strength aluminium alloy outer housing.

Each unit is equipped with a large and bright LED display that can be easily read even in direct sunlight. The simple to use remote features oversized buttons for use with gloved hands and provides for control of tare and hold functions. Battery charging intervals are extended by the standby power saving mode as well as the automatic shut off feature. As with all Straightpoint products each JumboWeigher is safety tested and is supplied with certification of calibration and proof testing.

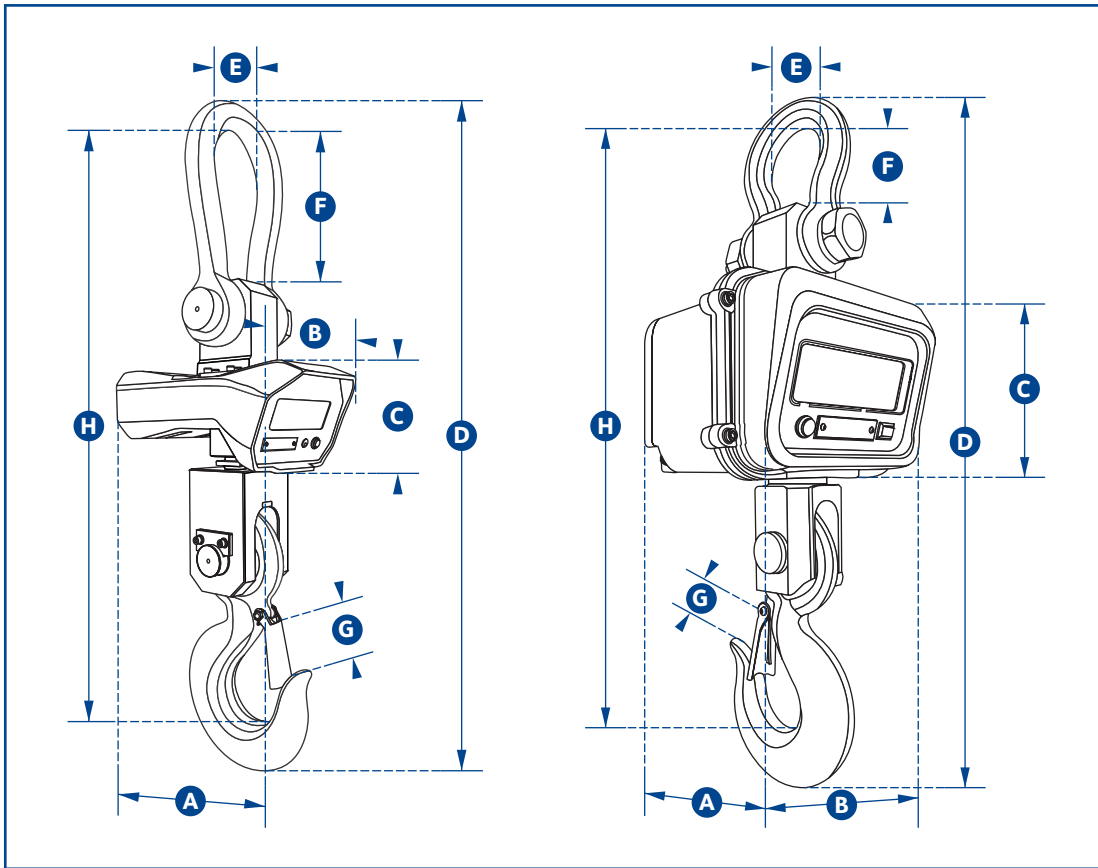
If you are looking for a high quality, cost-effective crane scale and are unwilling to give up features and safety, look no further than the JumboWeigher crane scale from Straightpoint.

## Features and benefits:

- Large bright LED display
- High accuracy
- Aluminium housing
- Power saving mode
- Tare
- Hold function
- Large keys make operation simple even if wearing gloves



## metric specifications



# jumboweigher

Part Number	JW5T	JW10T	JW20T
Capacity	5000kg	10,000kg	20,000kg
Resolution	2kg	5kg	10kg
Units	kg		
Weight	18kg	29kg	75kg
Safety Factor	5:1		
Battery Type	Internal rechargeable		
Battery Life	20 hours		
Operating Temp	-10°C to +40°C		
Accuracy	±0.3% of applied load		
Display Type	30mm LED		
Protection	IP54		
Dimension A	195	195	355
Dimension B	225	255	230
Dimension C	180	180	165
Dimension D	715	780	1115
Dimension E	72	90	140
Dimension F	90	110	230
Dimension G	36	50	70
Dimension H	595	660	980



Unit 9, Dakota Park, Downley Road, Havant, Hampshire PO9 2NJ · UK  
 Tel: +44(0)2392 484491 · Fax: +44(0)2392 472211  
[www.straightpoint.com](http://www.straightpoint.com) · [sales@straightpoint.com](mailto:sales@straightpoint.com)



# wireless and cabled HHP



The Handheld Plus is our rugged and versatile digital handheld display with a broad range of features and suitable for all Straightpoint load cell products.

At the heart of the ergonomically designed Handheld Plus is a powerful PCB providing industry leading features such as user selectable units of measure (tonnes, lbs, kg and kN), programmable audible overload alarm, peak hold, pre-set tare and a user resettable overload counter.

This crucial overload alarm counter is a requirement for many safety and quality control departments as it keeps track of overload events allowing the load cell in question to be removed from service immediately following the calibration voiding overload event. The load cell in question can then be sent out for proper testing and, if necessary, recalibration before re-entering service.

The HHP is suitable for connection via cable to any Straightpoint cabled load cell product and easily adapted to any other manufacturers' load cell product with a mv/v output.

In addition to the standard HHP the SW-HHP is suitable for connection to any Straightpoint wireless load cell, has a range of up to 250 metres and is supplied as standard with the Radiolink plus load cell.

## Features and benefits:

- Overload counter
- User settable 90db audible overload alarm
- Multiple display units – tonnes, lbs, kg and kN
- Peak hold
- Pre-set tare
- Wireless range 250 metres

Global Specifications Part Number	HHP	SW-HHP
Battery Type	1 x PP3 9v	2 x AA
Battery Life	130 hours continuous	60 hours continuous
Operating Temp	-10°C to 50°C or 14°F to 122°F	
Display Type	6 digit 22mm or 1" LCD	
Display Rate	3 Hz	
Max Resolution	1:999999	
Excitation	5v	N/A
Maximum Sensitivity	3mv/v	N/A
Connectivity	6-way Female Binder 423 Socket	Wireless 2.4 GHz

## Accreditations



FM 584438

Our BSI accreditation means that we have been assessed against internationally recognised standards and operate to the highest levels of quality and service, providing further assurance to you that the certificate issued to us is credible.

This accreditation reduces the risk to you, our customer, and gives you complete confidence that we have been independently evaluated for our competence and performance capability.

ISO 9001 is the internationally recognised standard for the quality management of businesses. Its aim is to give improved product, process and service quality within an organisation and can lead to increased productivity with a reduction in waste through streamlining of current working practices.

Certification communicates to our customers and prospects that we comply with this internationally recognised standard, building confidence whilst demonstrating our commitment to quality.

## Affiliations



LEEA is established across the globe as the respected and authoritative representative body for all those involved in the lifting industry worldwide, representing their members at the highest levels across a range of both public and private bodies.

The association has played a key role in this specialised field for over 70 years, from training and standards setting through to health and safety, the provision of technical and legal advice, and the development of examination and licensing systems.



ASME is the leading international developer of codes and standards associated with the art, science, and practice of mechanical engineering. Starting with the first issuance of its legendary Boiler & Pressure Vessel Code in 1914, ASME's codes and standards have grown to nearly 600 offerings currently in print. These offerings cover a breadth of topics, including pressure technology, nuclear plants, elevators / escalators, construction, engineering design, standardisation, and performance testing.



AWRF was formed in 1975 and incorporated the following year by a group of concerned businessmen who felt there was a need for sling fabricators and special rigging components manufacturers to join together to form a trade association. Originally created by representatives from nine companies in the United States, in two decades the organisation grew to concentrate on the needs of over 400 member companies worldwide.

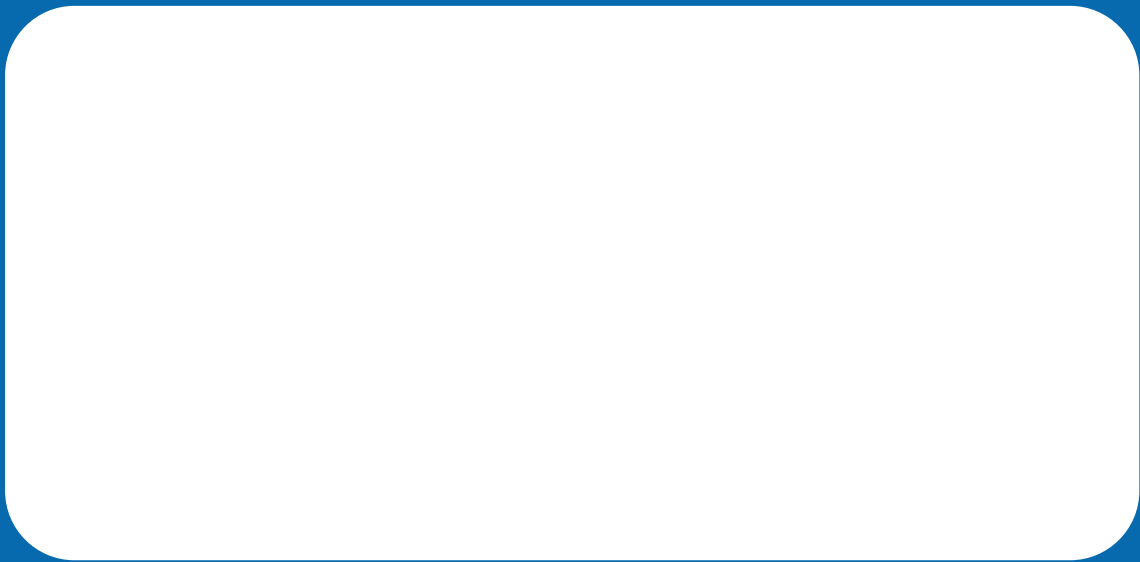


SC&RA is an international trade association of nearly 1,300 member companies from 43 nations. Members are involved in specialised transportation, machinery moving and erecting, industrial maintenance, millwrighting, crane and rigging operations, manufacturing and rental.

It helps run more efficient and safer businesses by monitoring and affecting pending legislation and regulatory policies at the state and national levels; researching and reporting on safety concerns and best business practices.



Unit 9, Dakota Park, Downley Road, Havant, Hampshire PO9 2NJ · UK  
Tel: +44(0)2392 484491 · Fax: +44(0)2392 472211  
[www.straightpoint.com](http://www.straightpoint.com) · [sales@straightpoint.com](mailto:sales@straightpoint.com)



Unit 9, Dakota Park, Downley Road, Havant, Hampshire PO9 2NJ · UK  
Tel: +44(0)2392 484491 · Fax: +44(0)2392 472211  
[www.straightpoint.com](http://www.straightpoint.com) · [sales@straightpoint.com](mailto:sales@straightpoint.com)