

pspuk.com

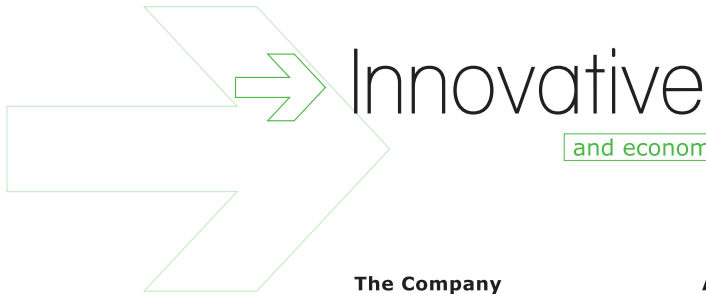
Manufacturing construction envelopes

PSP

metal façade
solutions

Turning architectural concept into engineering reality is fundamental to the corporate philosophy of PSP. PSP incorporates a design driven strategy throughout all operations, ensuring that innovation & economy are at the forefront of its culture.





Innovative

and economical solutions....

The Company

PSP designs and manufactures high quality metal construction products which can be used as fully integrated facade systems, or as elements incorporated into building envelopes.

Products

From single element products such as insulated gutters or soakers to fully integrated facade systems, PSP offers one of the largest ranges of metal construction products in the building industry.

Operations

The company has invested in one of the most sophisticated computer aided manufacturing systems which integrates comprehensively, all aspects of the companies operations.

Awards

PSP's commitment to state of the art information technology being directly linked to the manufacturing process was rewarded by the company winning the prestigious government sponsored Knowledge Transfer Award. In conjunction with the University of Durham, PSP developed integrated manufacturing system for a new extended production facility.

The programme audited and redesigned the production process to meet ever changing market demands and was built around the implementation of a new computer infrastructure which integrated individual elements into one comprehensive management system. In effect PSP turned an academic business model into a fully operational manufacturing

system which incorporated product costing, scheduling, capacity planning, continuous improvement programmes and customer relations management. The structure of the system allows continuous improvement programmes to operate throughout all aspects of the business to ensure the company delivers competitive high quality products on time.

Technical

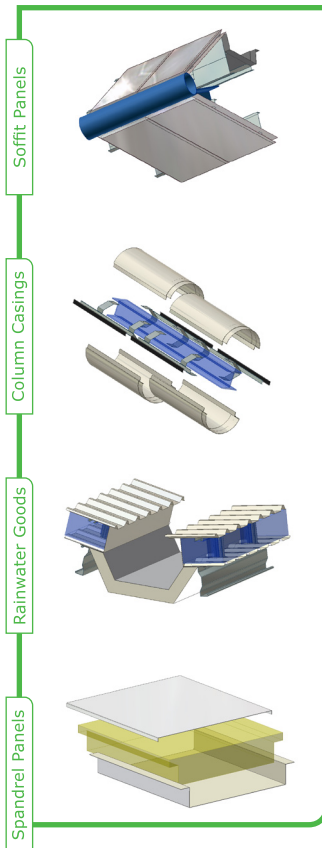
One of the most advanced 3D modelling and drawing software packages forms the backbone of the technical department. Highly experienced engineers are always ready to provide technical and customer support.

Research and development

Through constant investment and development, PSP is committed to enhancing its current product range and introducing new and innovative products to the market.



⇒ Cladding Elements



A Range of standard and bespoke fabrications which can be used individually or incorporated as part of an integrated building envelope.

Products

- Insulated spandrel panels
- Perforated panels
- Plank profiles
- Cassette panels
- Soffit panel systems
- Bullnose profiles
- Column casings
- Louvres
- Louvre lookalike profiles
- Brie soleil
- Access hatches
- Soakers
- Insulated gutters
- Rainwater systems
- Flashings
- Ventilators/ridge vents
- Bespoke fabrications

Materials

Our manufacturing facility has been developed to fabricate a wide range of hard metals including:-

- Aluminium
- Steel
- Stainless steel
- A.C.M
- Zinc
- Copper

Finishes

Each metal offers a range of finish options including:-

- Polyester powder coated
- Pvf2 coated
- Pre finished
- Anodised
- Brush finished
- Rigidized
- Stucco
- Keronite

Note: Not all materials or finishes can be used with all systems. Please check with PSP for suitability

Installation

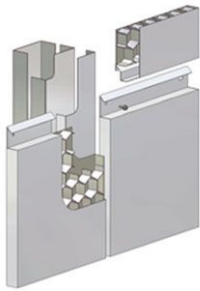
Installation of PSP's products is carried out by specialist installation contractors who are accredited under the PSP installation training programme. An installation training area provides contractors with project specific mock ups to demonstrate fixing and installation methods prior to site construction.



⇒ Cladding Systems

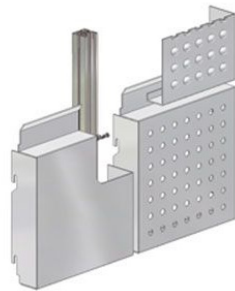
PSP Matrix 1 Metal façade Solutions

Based on aluminium honeycomb technology, **matrix 1** was developed to provide an exceptionally flat panel system at an economical price. Fast installation is achieved by through fix, stacking panels which are fixed directly to the back to a secondary steel frame.



PSP Matrix 2 Metal façade Solutions

Based on high tolerance fabrication of pre or post finished metal sheet, **matrix 2** offers individual panel demountability and is ideal for perforated or patterned panels.
Incorporates carrier



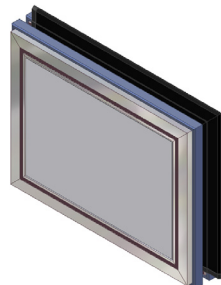
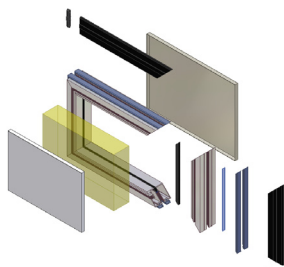
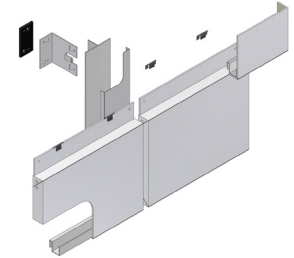
PSP Matrix 3 Metal façade Solutions

Based on the use of pre coated aluminium composite materials [ACM]. Exceptionally flat panels are available with fire rated cores and a wide range of finishes. **Matrix 3** is ideal for large format modular grids.
Incorporates carrier



PSP Matrix T Metal façade Solutions

Based on the new extruded aluminium support system **matrix T** is able to incorporate a through fixed solution to our **matrix 1, 2** and **3** façade systems.



Matrix insulated cladding

In addition to rainscreen cladding, PSP manufacture a range of insulated panels for use as spandrels or as a fully integrated facade system.

Metal skins are structurally laminated to a choice of insulants including polyurethane, polyisocyanurate and mineral wool. The thickness of the core is dimensioned to suit the required 'u' value.

Manufacture



⇒ PSP Co Durham

Only the best

PSP has invested in one of the most comprehensive manufacturing facilities in the industry. CAD generated detailing is seamlessly transferred to state of the art CNC machinery to ensure all products are produced with exceptional levels of accuracy and quality.

Quality

PSP has a proven track record for unsurpassed quality which is renowned throughout the construction industry. This continuing commitment to quality is reflected in all of our staff, our products and our systems.

Unit 1

Unit 1 is dedicated to the production of pressed and punched fabrications, assemblies and items which require welded and finished joints prior to powder coating.

Unit 1 can handle any size of order from one-offs to high volume production runs and specialises on those orders where a fast turnaround is required. It is often in full operation 24 hours a day.

Unit 1 Operations

- Cutting & shearing
- CNC press bending
- CNC punching
- CNC roller curving
- Cutting/routing
- Mig welding
- Tig welding

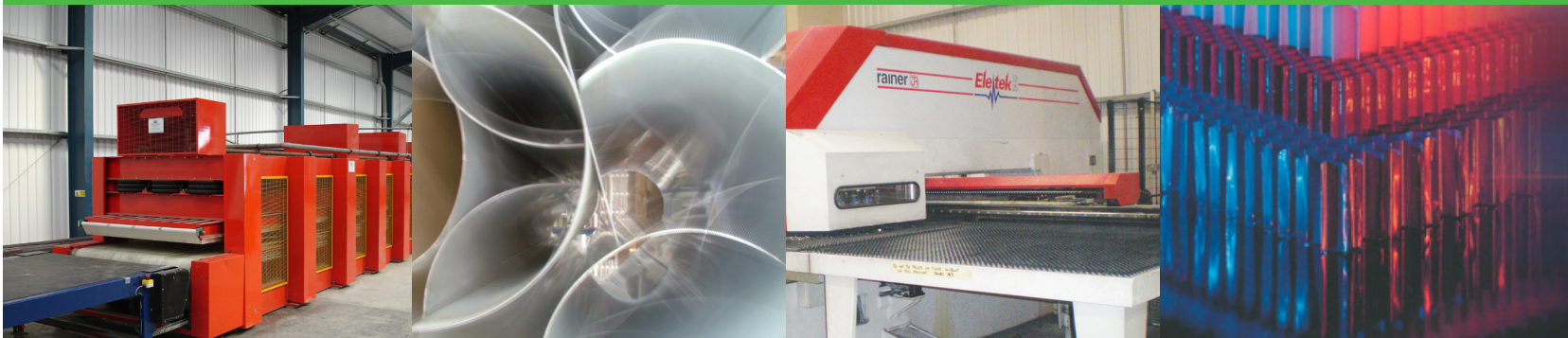
Unit 2

Unit 2 is dedicated to the volume manufacture of composite panels.

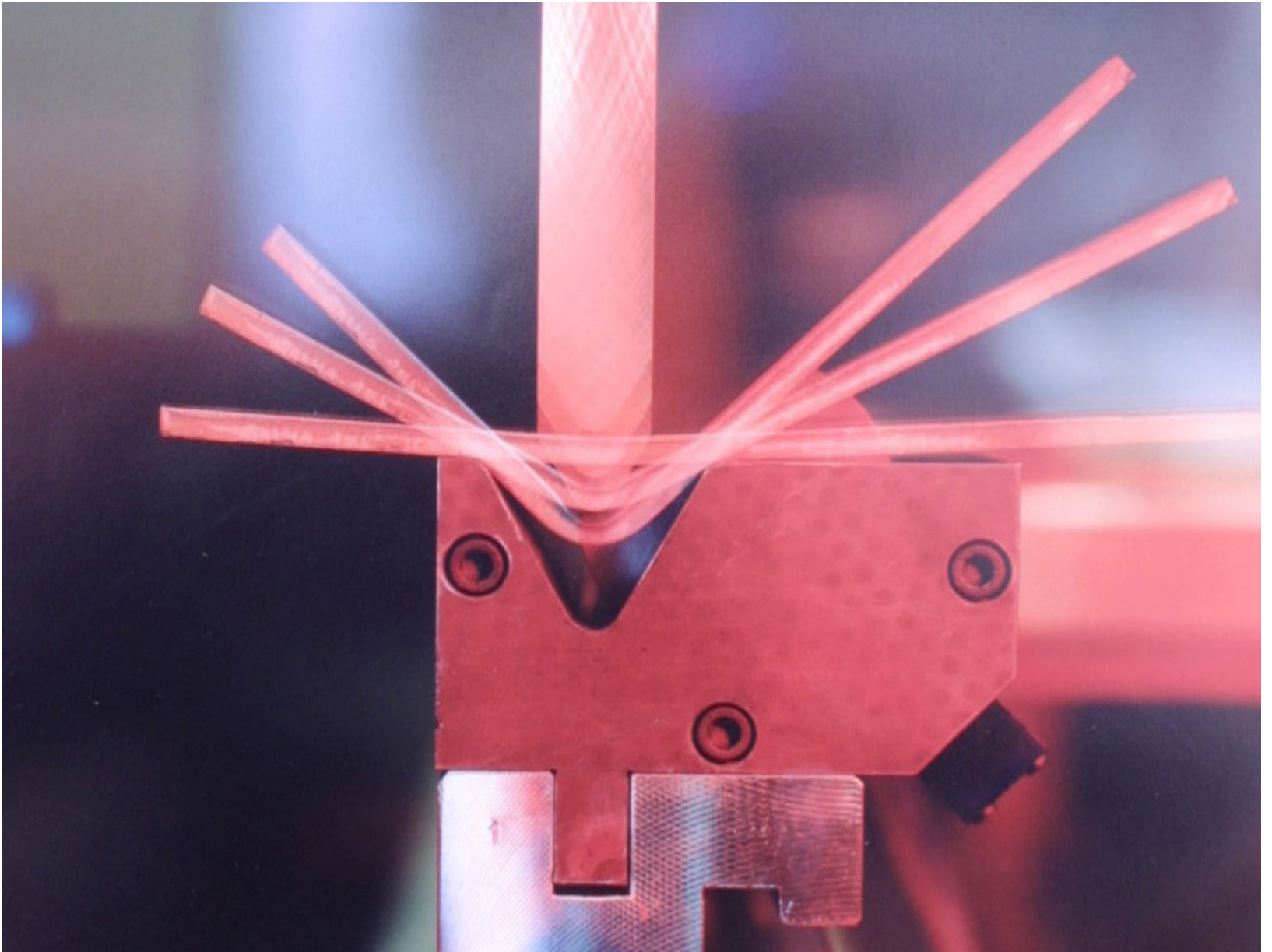
Panels consist of pre engineered metal skins bonded to a core using a thermosetting solvent-free polyurethane adhesive within a heated platen press. PSP uses a range of core materials including aluminium honeycomb, polyisocyanurate and mineral wool.

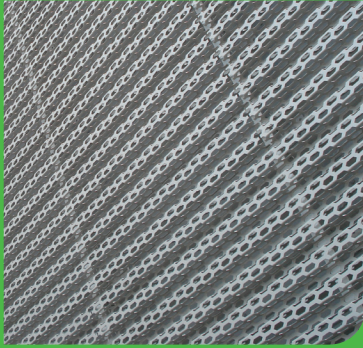
Unit 2 operations

- Cutting & Shearing
- CNC press bending
- CNC punching & Routing
- Core expanding
- Core cutting
- Adhesive application
- Thermal pressing
- Vacuum pressing



⇒ Picture courtesy of Bystronic





www.pspuk.com

Tel: 00 44 (0)1388 770490

Fax 00 44 (0)1388 778068

E-mail info@pspuk.com

Unit 11, All Saints Industrial Estate, Shildon
County Durham, UK, DL4 2RD

Manufacturing construction envelopes

PSP metal façade
solutions