

# FEC HD

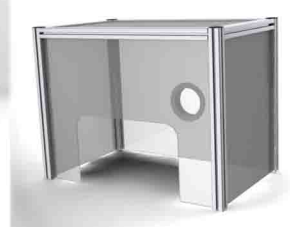
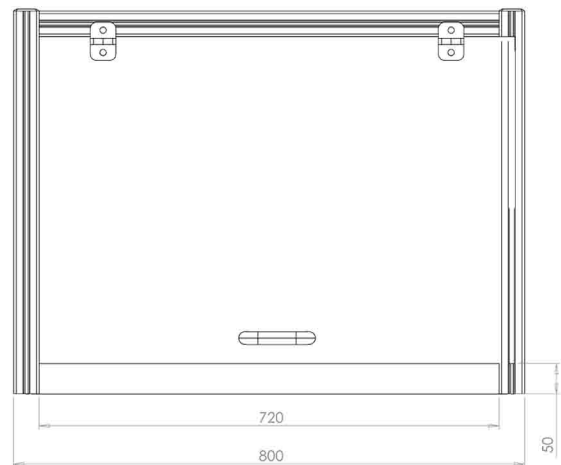
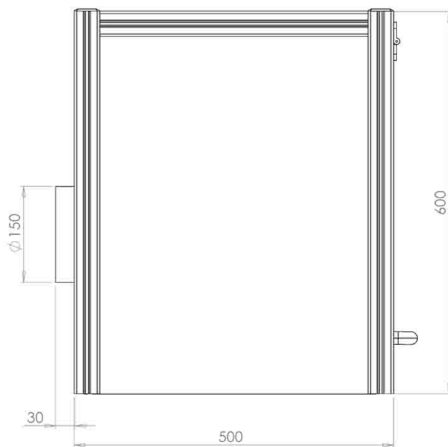
Fume Extraction Cabinet (FEC) Range



- + Cabinet dimensions - 800mm x 500mm x 600mm
- + Open face dims (Door closed) - 720mm x 50mm
- + Open face dims (Door open) - 720mm x 560mm
- + Constructed from strong and durable extruded aluminium profile
- + Corrosion protected anodized natural finish
- + Clear Polycarbonate infill panels
- + Comes fully assembled
- +  $\phi 150$ mm spigot connection
- + Available in any size to match your requirements  
Spigot size and location can also be altered at your request - contact Flextraction for further details.

Airflow (Door Closed) @ 1.0m/s ..... 135 m<sup>3</sup>/h  
Airflow (Door Closed) @ 0.5m/s ..... 70 m<sup>3</sup>/h  
Airflow (Door Closed) @ 0.3m/s ..... 40 m<sup>3</sup>/h

Spigot Size .....  $\phi 150$ mm  
Spigot Location ..... Rear



**T** 01664 410641

**F** 01664 480244

**E** Sales@flextraction.co.uk

**W** www.flextraction.co.uk

**A** Flextraction Ltd.

10 Digby Drive

Melton Mowbray

Leicestershire LE13 0RQ

